

THIS DOCUMENT

This document has been produced by the Office of the Appeals Convenor as an electronic version of the original Statement for the proposal listed below as signed by the Minister and held by this Office. Whilst every effort is made to ensure its accuracy, no warranty is given as to the accuracy or completeness of this document.

The State of Western Australia and its agents and employees disclaim liability, whether in negligence or otherwise, for any loss or damage resulting from reliance on the accuracy or completeness of this document.

Copyright in this document is reserved to the Crown in right of the State of Western Australia. Reproduction except in accordance with copyright law is prohibited.

Published on: 4 August 2015

Statement No. 1011

STATEMENT THAT A PROPOSAL MAY BE IMPLEMENTED
(*Environmental Protection Act 1986*)

EXPLORATION DRILLING FERAL PROSPECT

Proposal: The proposal is for an exploration drilling program which involves disturbance and clearing for access tracks and drill pads, and fencing, on banded iron formation ranges of the Perenjori Hills.

Proponent: Hermitage Holdings Pty Ltd, ACN 009 157 591
Devereux Nominees Pty Ltd, ACN 008 850 860
Pinecroft Pty Ltd, ACN 009 125 893
Paloma Holdings Pty Ltd, ACN 009 210 262

Proponent Address: % Hermitage Holdings Pty Ltd
9 Marie Way, Kalamunda, WA 6076

Assessment Number: 2016

Report of the Environmental Protection Authority: 1549

Pursuant to section 45 of the *Environmental Protection Act 1986* it has been agreed that the proposal described and documented in Table 2 of Schedule 1 may be implemented and that the implementation of the proposal is subject to the following implementation conditions and procedures:

Words and expressions used in this Statement shall have the same respective meanings as in the EP Act or as provided for in Schedule 1 of this Statement.

1 Proposal Implementation

1-1 When implementing the proposal, the proponent shall not exceed the authorised extent of the proposal as defined in Table 2 in Schedule 1, unless amendments to the proposal and the authorised extent of the proposal have been approved under the EP Act.

2 Contact Details

- 2-1 The proponent shall notify the CEO of any change of its name, physical address or postal address for the serving of notices or other correspondence within twenty eight (28) days of such change. Where the proponent is a corporation or an association of persons, whether incorporated or not, the postal address is that of the principal place of business or of the principal office in the State.

3 Time Limit for Proposal Implementation

- 3-1 The proponent shall not commence implementation of the proposal after five (5) years from the date on this Statement, and any commencement, prior to this date, must be substantial.
- 3-2 Any commencement of implementation of the proposal, on or before five (5) years from the date of this Statement, must be demonstrated as substantial by providing the CEO with written evidence, on or before the expiration of five (5) years from the date of this Statement.

4 Compliance Reporting

- 4-1 The proponent shall prepare, submit and maintain a Compliance Assessment Plan to the CEO at least six (6) months prior to the first Compliance Assessment Report required by condition 4-6, or prior to implementation, whichever is sooner.
- 4-2 The Compliance Assessment Plan shall indicate:
- (1) the frequency of compliance reporting;
 - (2) the approach and timing of compliance assessments;
 - (3) the retention of compliance assessments;
 - (4) the method of reporting of potential non-compliances and corrective actions taken;
 - (5) the table of contents of Compliance Assessment Reports; and
 - (6) public availability of Compliance Assessment Reports.
- 4-3 After receiving notice in writing from the CEO that the Compliance Assessment Plan satisfies the requirements of condition 4-2 the proponent shall assess compliance with conditions in accordance with the Compliance Assessment Plan required by condition 4-1.

- 4-4 The proponent shall retain reports of all compliance assessments described in the Compliance Assessment Plan required by condition 4-1 and shall make those reports available when requested by the CEO.
- 4-5 The proponent shall advise the CEO of any potential non-compliance within seven (7) days of that non-compliance being known.
- 4-6 The proponent shall submit to the CEO the first Compliance Assessment Report fifteen (15) months from the date of issue of this Statement addressing the twelve (12) month period from the date of issue of this Statement and then annually from the date of submission of the first Compliance Assessment Report, or as otherwise agreed in writing by the CEO.

The Compliance Assessment Report shall:

- (1) be endorsed by the proponent's Chief Executive Officer or a person delegated to sign on the Chief Executive Officer's behalf;
- (2) include a statement as to whether the proponent has complied with the conditions;
- (3) identify all potential non-compliances and describe corrective and preventative actions taken;
- (4) be made publicly available in accordance with the approved Compliance Assessment Plan; and
- (5) indicate any proposed changes to the Compliance Assessment Plan required by condition 4-1.

5 Public Availability of Data

5-1 Subject to condition 5-2, within a reasonable time period approved by the CEO of the issue of this Statement and for the remainder of the life of the proposal the proponent shall make publicly available, in a manner approved by the CEO, all validated environmental data (including sampling design, sampling methodologies, empirical data and derived information products (e.g. maps)) relevant to the assessment of this proposal and implementation of this Statement.

5-2 If any data referred to in condition 5-1 contains particulars of:

- (1) a secret formula or process; or
- (2) confidential commercially sensitive information;

the proponent may submit a request for approval from the CEO to not make these data publicly available. In making such a request the proponent shall

provide the CEO with an explanation and reasons why the data should not be made publicly available.

6 Construction and Operation Environmental Management Plan

6-1 The proponent shall ensure that clearing and disturbance for access and exploration drilling activities and fencing in the proposal area are undertaken in a manner that minimises impact on flora and vegetation, and avoids conservation significant fauna habitat.

6-2 Prior to the commencement of exploration and related activities, the proponent shall prepare and submit to the CEO a Construction and Operation Environmental Management Plan on advice of the Department of Parks and Wildlife and the Department of Mines and Petroleum.

The Construction and Operation Environmental Management Plan shall:

- (1) describe the minimal impact clearing processes for development of access tracks, drill pads and any associated infrastructure to ensure the management objective in condition 6-1 is achieved;
 - (2) provide procedures for avoiding York gums, conservation significant flora species and Malleefowl mounds (including 55m mound buffers) during construction of access tracks, drill pads and any associated infrastructure;
 - (3) describe the process by which access tracks will have their final alignment positioned to avoid individuals and populations of *Lepidosperma* sp. Koolanooka (K.R. Newbey 9336);
 - (4) provide protocols for avoidance of any additional Malleefowl mounds encountered during the exploration program and related activities;
 - (5) describe procedures for the management and storage of mulch onsite; and
 - (6) describe procedures for waste removal, weed prevention and control, preventing uncontrolled vehicle access to the proposal area, and for the control of feral species and fire.
- 6-3 The proponent shall have a qualified and experienced botanist supervising all ground disturbing and clearing activities associated with the exploration program.
- 6-4 The proponent shall only undertake exploration and related activities in dry soil conditions and outside of Malleefowl breeding/nesting season.

- 6-5 The proponent shall not commence exploration and related activities until the CEO has given written notice that the Construction and Operation Environmental Management Plan satisfies the requirements of condition 6-2, and subject to the terms of that notice, the proponent shall:
- (1) implement the management actions as specified in the Construction and Operation Environmental Management Plan; and
 - (2) continue to implement the management actions in accordance with the requirements of the Construction and Operation Environmental Management Plan until the CEO has confirmed by notice in writing that it has been demonstrated that the objective in condition 6-1 has been met, and therefore the implementation of the management actions is no longer required.
- 6-6 Within two months after cessation of drilling the proponent shall provide a report to the CEO which contains:
- (1) a calculation of the actual area cleared, including a map and spatial data showing the final alignment, dimensions and location of access tracks, drill pads and any other areas disturbed in the Development Envelope; and
 - (2) a demonstration that *Lepidosperma* sp. Koolanooka (K.R. Newbey 9336) individuals and populations, and Malleefowl mounds, have been avoided.
- 6-7 The Construction and Operation Environmental Management Plan required by condition 6-2 shall be made publicly available once approved by the CEO.

7 Rehabilitation

- 7-1 The proponent shall ensure that cleared and disturbed areas are rehabilitated such that no permanent scarring and degradation to the surrounding area results from the exploration program. Native vegetation is to be returned to disturbed areas using native species of local provenance. The proponent shall ensure that the condition, abundance and density of species are comparable to that which naturally occurs on the Perenjori Hills.
- 7-2 Prior to clearing and ground disturbing activities the proponent shall prepare and submit a Rehabilitation Plan to the CEO on advice from the Department of Parks and Wildlife and the Department of Mines and Petroleum. The Rehabilitation Plan shall:
- (1) spatially define the areas to be rehabilitated;
 - (2) specify the final profiles (reshaping) of drilled landforms;
 - (3) determine the species to be returned, including abundance and density;

- (4) specify the management actions for the return of stored subsoils and topsoil, final landform profile, the treatment of any compacted soils, the return of mulch and native plant species, weed management and control of access, including fencing, to ensure the management objective in condition 7-1 is achieved;
- (5) determine the rehabilitation success criteria for the native flora species to be returned;
- (6) provide protocols and procedures that describe the monitoring methodology and monitoring program for rehabilitation areas to:
 - (a) establish baseline vegetation condition;
 - (b) measure regrowth and coverage of the disturbed areas;
 - (c) identify the native species that have returned including vigour, abundance and density;
 - (d) identify any weed species present including vigour, abundance and density; and
 - (e) determine the effectiveness of the measures used for exclusion of vehicles, stock and feral species.
- (7) develop contingency measures and actions in the event the monitoring actions in condition 7-2(6) indicates that the rehabilitation objective in condition 7-1 is not being achieved; and
- (8) provide a protocol and procedure for the review of the Rehabilitation Plan to ensure that the Rehabilitation Plan is meeting the objective specified in condition 7-1.

7-3 After receiving notice in writing from the CEO that the Rehabilitation Plan satisfies the requirements of condition 7-2, the proponent shall:

- (1) implement the management actions required by condition 7-2(4) in the Rehabilitation Plan no longer than two months after cessation of drilling;
- (2) continue to implement the management actions and monitor in accordance with the requirements of the Rehabilitation Plan until the CEO, on the advice of the Department of Parks and Wildlife, has confirmed by notice in writing that it has been demonstrated that the objective in condition 7-1 and the requirements in condition 7-2(5) is being, and will continue to be met, and implementation of the management actions and monitoring is no longer required; and

- (3) report the results of the monitoring and any contingency measures implemented to the CEO and the Department of Parks and Wildlife on an annual basis, or as approved in writing by the CEO.
- 7-4 The proponent shall implement the contingency measures as required by condition 7-2(7) as and when directed by the CEO.
- 7-5 The proponent shall review and revise the Rehabilitation Plan as and when directed by the CEO.
- 7-6 The proponent shall implement the latest revision of the Rehabilitation Plan, which the CEO has confirmed by notice in writing, satisfies the requirements of condition 7-2.
- 7-7 The Rehabilitation Plan required by condition 7-2 shall be made publicly available once approved by the CEO.

8 Provisional Offset

- 8-1 If, the monitoring required by condition 7-2(6) has not demonstrated that the rehabilitation success criteria required by condition 7-2(5) has been met within 5 years of cessation of drilling, and the CEO determines that implementation of the proposal has resulted in a significant residual impact, the CEO may direct the proponent to prepare and implement an Offset Strategy.
- 8-2 The value of any required Offset Strategy would be appraised to counterbalance up to 3.24 hectares of unsuccessful rehabilitation and shall be prepared to the requirements of the CEO no longer than 6 months from written notice from the CEO.

[Signed 3 August 2015]

Albert Jacob MLA
MINISTER FOR ENVIRONMENT; HERITAGE

Table 1: Summary of the Proposal

Proposal Title	Exploration Drilling Feral Prospect
Short Description	The proposal is for an exploration drilling program which involves disturbance and clearing for access tracks and drill pads, and fencing, on banded iron formation ranges of the Perenjori Hills.

Table 2: Location and authorised extent of physical and operational elements

Column 1	Column 2	Column 3
Element	Location	Authorised Extent
Clearing and disturbance area	Figures 2, 3 and 4 of Schedule 1 and geographic coordinates as defined in Schedule 2	Clearing of no more than: <ul style="list-style-type: none"> • 1.8 ha for access tracks; and • 1.44 ha for paired drill pads, within a 48.63 ha development envelope.

Table 3: Abbreviations and Definitions

Acronym or Abbreviation	Definition or Term
CEO	The Chief Executive Officer of the Department of the Public Service of the State responsible for the administration of section 48 of the <i>Environmental Protection Act 1986</i> , or his delegate.
EPA	Environmental Protection Authority
EP Act	<i>Environmental Protection Act 1986</i>
OEPA	Office of the Environmental Protection Authority
ha	Hectare

Figures (attached)

- Figure 1 Regional location and Koolanooka System Threatened Ecological community
- Figure 2 Proposal location and Development Envelope
- Figure 3 Location of identified *Lepidosperma* sp. Koolanooka (K.R. Newbey 9336) individuals in the proposal area
- Figure 4 Location of identified Malleefowl mounds in the proposal area

(These Figures are a representation of the coordinates shown in Tables 1, 2, 3 and 4 of Schedule 2)

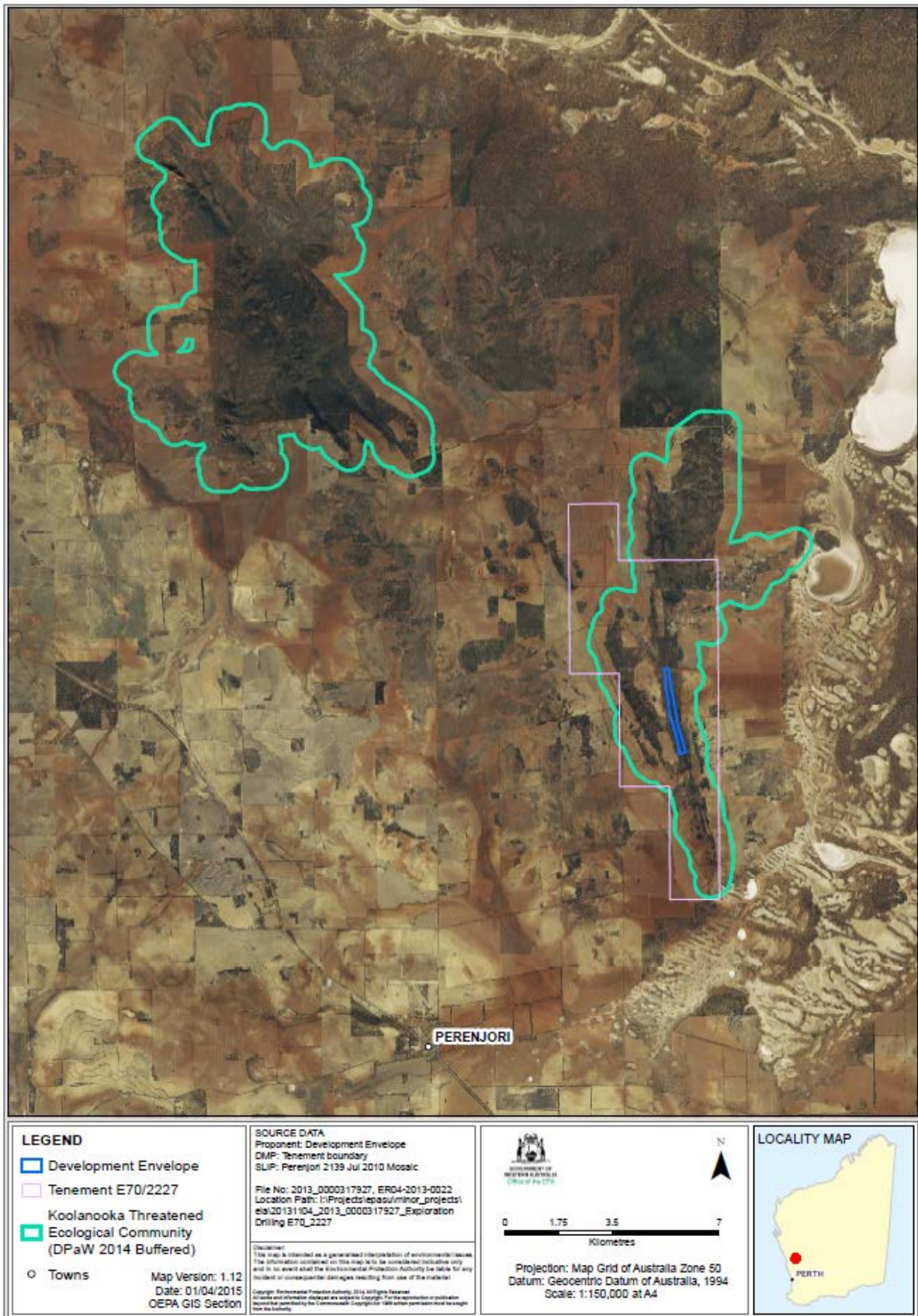


Figure 1 – Regional location and Koolanooka System Threatened Ecological Community

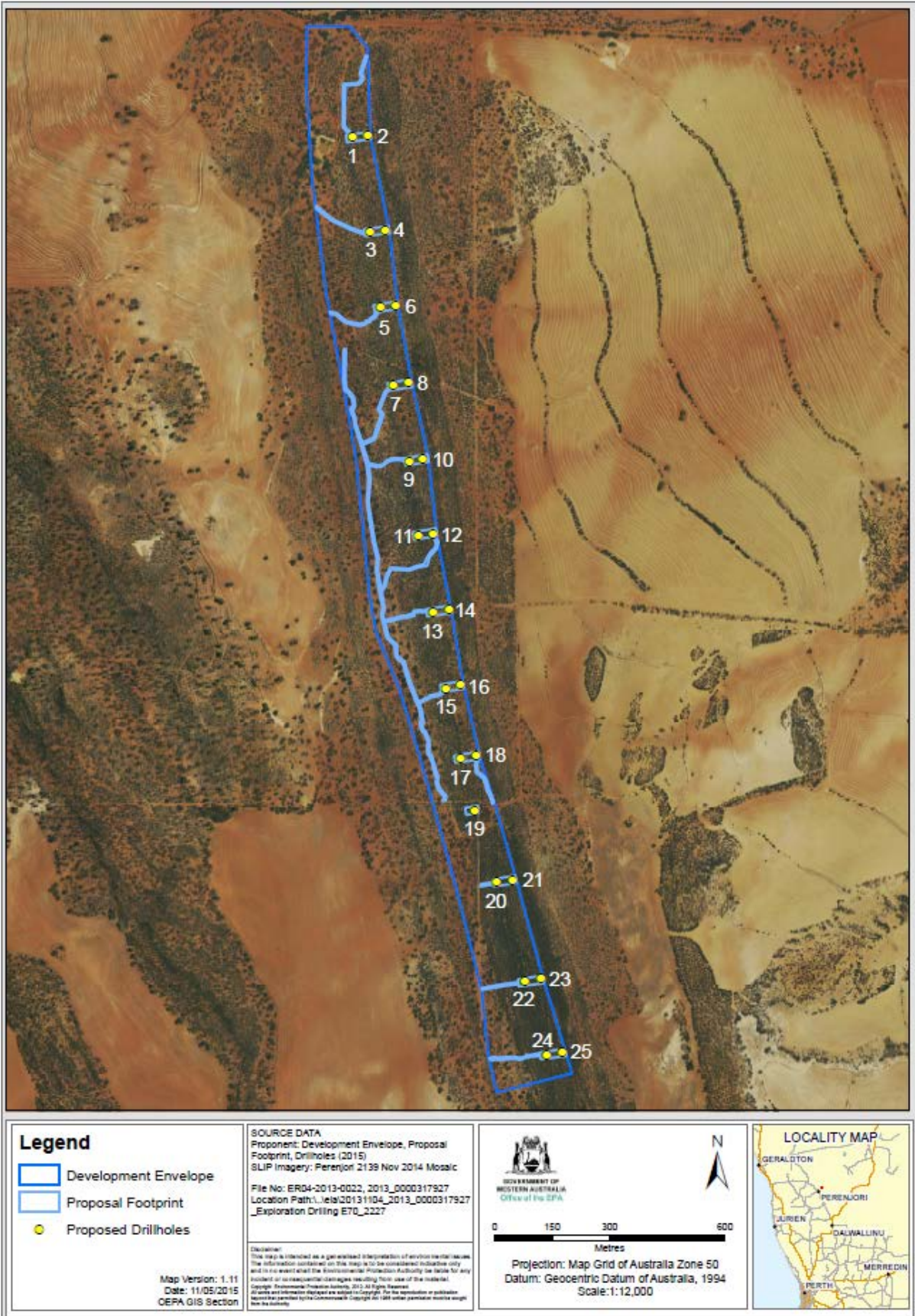


Figure 2 – Proposal location and Development Envelope

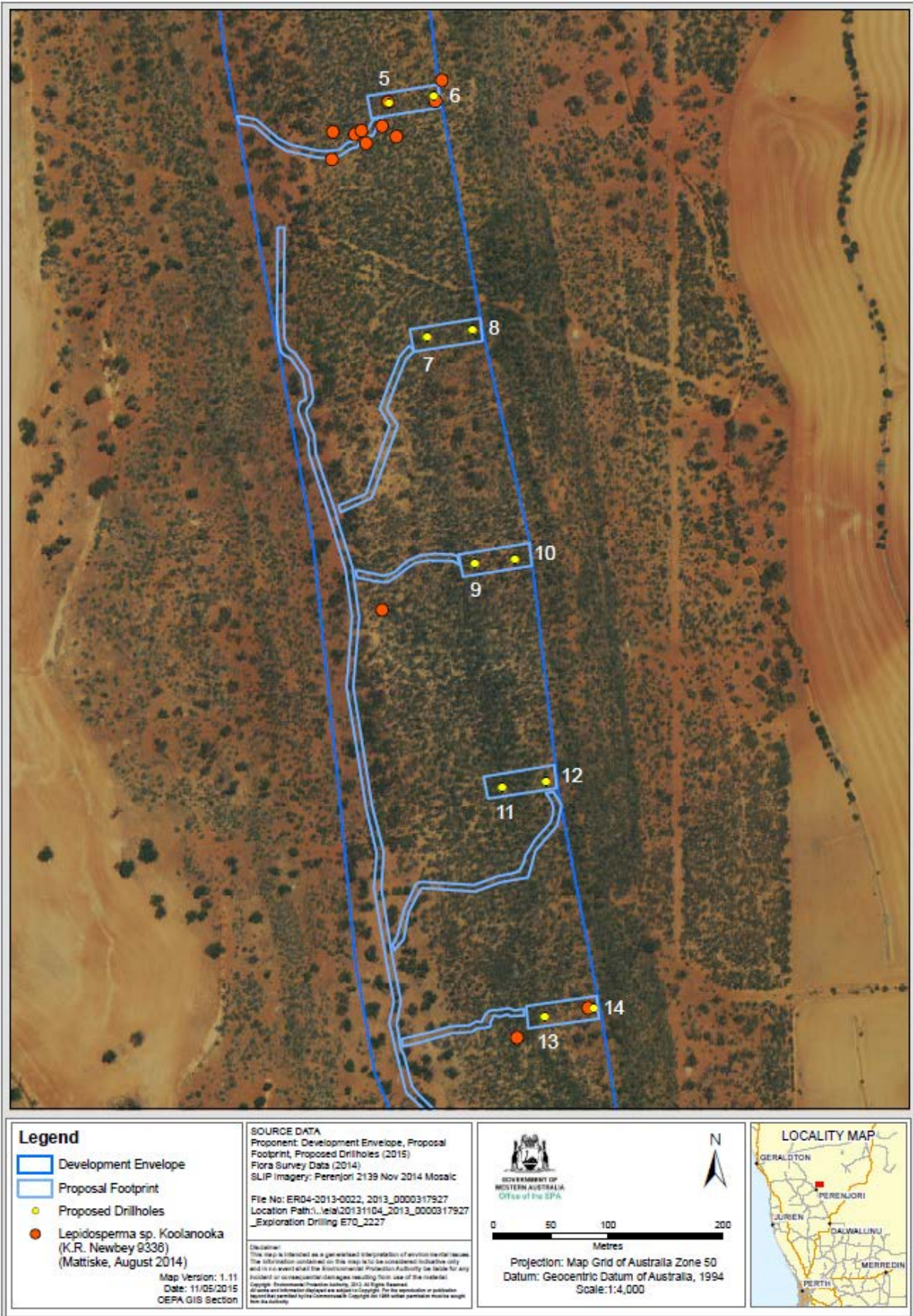


Figure 3 – Location of the identified *Lepidosperma* sp. Koolanooka (K.R. Newbey 9336) individuals in the proposal area

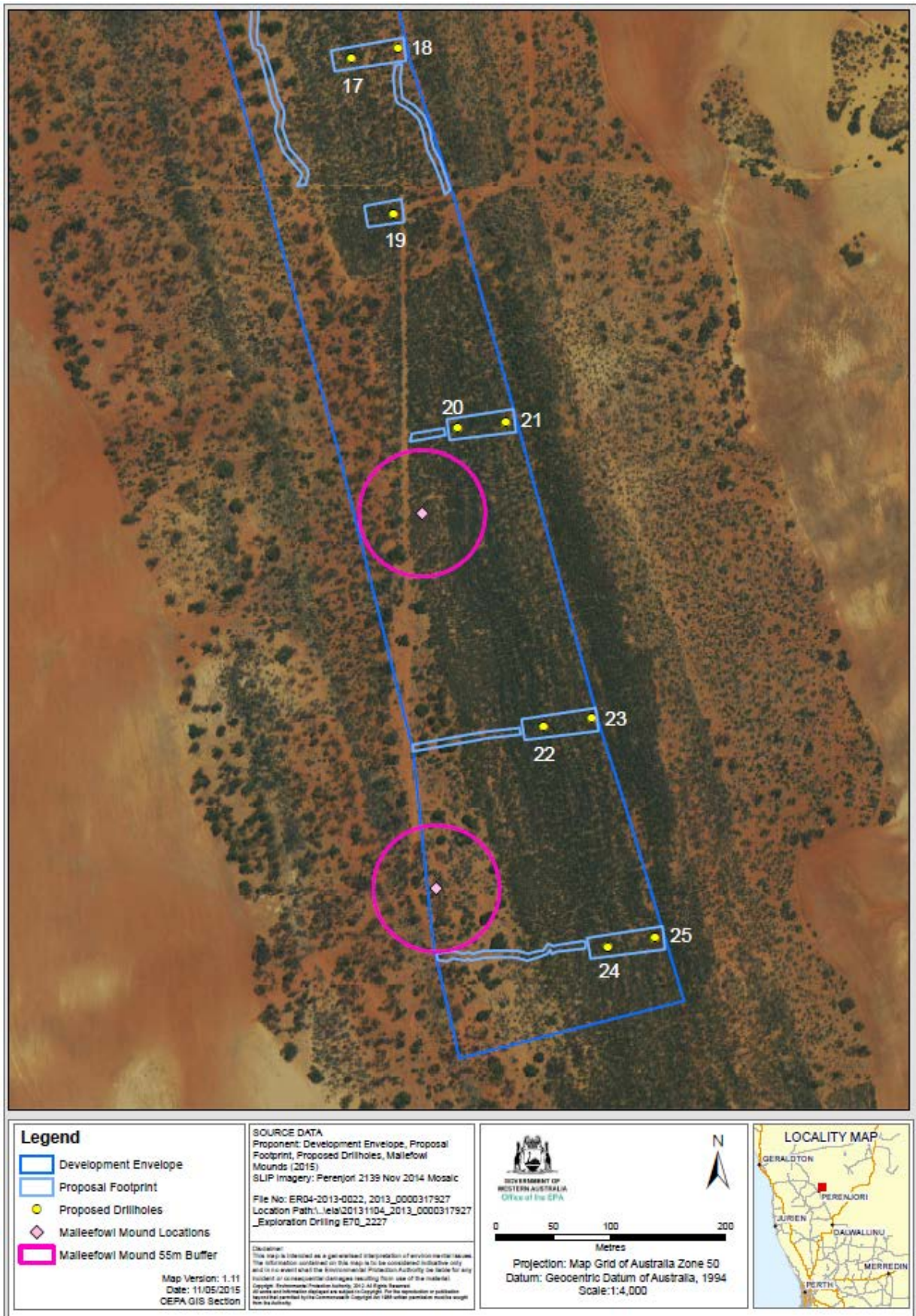


Figure 4 – Location of the identified Malleefowl mounds in the proposal area

Schedule 2

Table 1: Exploration Development Envelope Coordinates (MGA Zone 50)

Coordinate No	Easting	Northing
1	439205.53	6752471.99
2	439009.91	6752422.12
3	438987.54	6752519.64
4	438969.97	6752689.04
5	438905.25	6752948.22
6	438818.76	6753261.38
7	438756.89	6753471.34
8	438694.96	6753623.80
9	438678.53	6753718.39
10	438662.06	6753887.38
11	438641.37	6754085.08
12	438606.62	6754278.91
13	438564.24	6754512.84
14	438529.74	6754797.12
15	438513.18	6755050.43
16	438515.71	6755199.65
17	438625.71	6755198.98
18	438672.68	6755143.23
19	438681.73	6754907.84
20	438728.93	6754671.82
21	438751.47	6754475.39
22	438790.78	6754260.46
23	438829.87	6754084.62
24	438855.12	6753866.23
25	438892.84	6753669.88
26	438921.20	6753493.78
27	438967.10	6753290.08
28	439005.89	6753169.40
29	439057.24	6752987.08
30	439133.92	6752705.77
31	439153.50	6752644.59
32	439205.53	6752471.99

Table 2: Clearing and Disturbance Footprint Coordinates (MGA Zone 50)

Coordinate No	Easting	Northing	Description
1	438664.21	6754670.38	pads (3,4)
2	438728.43	6754678.60	pads (3,4)
3	438729.55	6754669.63	pads (3,4)
4	438730.86	6754660.66	pads (3,4)
5	438667.31	6754652.89	pads (3,4)

Coordinate No	Easting	Northing	Description
6	438664.21	6754670.38	pads (3,4)
1	438853.47	6753871.29	pads (11,12)
2	438793.62	6753861.99	pads (11,12)
3	438789.92	6753881.25	pads (11,12)
4	438851.22	6753891.22	pads (11,12)
5	438853.47	6753871.29	pads (11,12)
1	438890.27	6753670.71	pads (13,14)
2	438828.48	6753662.40	pads (13,14)
3	438826.92	6753681.67	pads (13,14)
4	438888.03	6753690.64	pads (13,14)
5	438890.27	6753670.71	pads (13,14)
1	438923.37	6753473.88	pads (15,16)
2	438864.29	6753465.80	pads (15,16)
3	438862.34	6753484.52	pads (15,16)
4	438921.12	6753493.81	pads (15,16)
5	438923.37	6753473.88	pads (15,16)
1	438963.67	6753290.27	pads (17,18)
2	438901.59	6753280.96	pads (17,18)
3	438898.49	6753299.01	pads (17,18)
4	438961.43	6753310.20	pads (17,18)
5	438963.67	6753290.27	pads (17,18)
1	438789.04	6754260.31	pads (7,8)
2	438729.19	6754251.01	pads (7,8)
3	438725.49	6754270.27	pads (7,8)
4	438786.80	6754280.24	pads (7,8)
5	438789.04	6754260.31	pads (7,8)
1	438831.84	6754064.64	pads (9,10)
2	438771.99	6754055.34	pads (9,10)
3	438768.30	6754074.60	pads (9,10)
4	438829.60	6754084.57	pads (9,10)
5	438831.84	6754064.64	pads (9,10)
1	439130.96	6752706.90	pads (23,24)
2	439066.74	6752699.02	pads (23,24)
3	439064.22	6752717.18	pads (23,24)
4	439128.72	6752726.83	pads (23,24)
5	439130.96	6752706.90	pads (23,24)
1	439188.96	6752516.85	pads (24,25)
2	439124.16	6752508.64	pads (24,25)
3	439121.15	6752526.68	pads (24,25)
4	439186.72	6752536.78	pads (24,25)
5	439188.96	6752516.85	pads (24,25)
1	438962.00	6753149.76	pads (19)
2	438930.47	6753145.49	pads (19)
3	438927.37	6753163.65	pads (19)

Coordinate No	Easting	Northing	Description
4	438959.76	6753169.70	pads (19)
5	438962.00	6753149.76	pads (19)
1	438681.38	6754905.49	pads (1,2)
2	438618.61	6754897.39	pads (1,2)
3	438617.34	6754916.11	pads (1,2)
4	438679.05	6754923.43	pads (1,2)
5	438681.38	6754905.49	pads (1,2)
1	438752.22	6754463.32	pads (5,6)
2	438692.36	6754454.02	pads (5,6)
3	438688.67	6754473.28	pads (5,6)
4	438749.97	6754483.25	pads (5,6)
5	438752.22	6754463.32	pads (5,6)
1	439059.38	6752967.02	pads (20,21)
2	439001.56	6752960.17	pads (20,21)
3	438999.04	6752978.22	pads (20,21)
4	439057.14	6752986.95	pads (20,21)
5	439059.38	6752967.02	pads (20,21)
1	438673.61	6755121.96	tracks (pad 1,2)
2	438659.00	6755076.34	tracks (pad 1,2)
3	438662.86	6755063.17	tracks (pad 1,2)
4	438661.04	6755058.51	tracks (pad 1,2)
5	438650.33	6755046.71	tracks (pad 1,2)
6	438621.99	6755044.56	tracks (pad 1,2)
7	438616.94	6755045.20	tracks (pad 1,2)
8	438614.81	6755043.19	tracks (pad 1,2)
9	438613.81	6754940.47	tracks (pad 1,2)
10	438616.45	6754936.83	tracks (pad 1,2)
11	438633.74	6754918.86	tracks (pad 1,2)
12	438626.36	6754918.27	tracks (pad 1,2)
13	438617.77	6754926.09	tracks (pad 1,2)
14	438614.74	6754930.06	tracks (pad 1,2)
15	438612.50	6754932.37	tracks (pad 1,2)
16	438611.23	6754933.25	tracks (pad 1,2)
17	438610.05	6754935.13	tracks (pad 1,2)
18	438608.49	6754937.56	tracks (pad 1,2)
19	438609.17	6755045.27	tracks (pad 1,2)
20	438611.28	6755049.71	tracks (pad 1,2)
21	438616.23	6755050.18	tracks (pad 1,2)
22	438622.05	6755050.54	tracks (pad 1,2)
23	438648.36	6755052.24	tracks (pad 1,2)
24	438656.84	6755062.37	tracks (pad 1,2)
25	438653.08	6755077.19	tracks (pad 1,2)
26	438667.87	6755123.59	tracks (pad 1,2)
27	438673.61	6755121.96	tracks (pad 1,2)

Coordinate No	Easting	Northing	Description
1	438665.12	6754663.07	tracks (pad 3,4)
2	438664.76	6754656.98	tracks (pad 3,4)
3	438627.80	6754669.96	tracks (pad 3,4)
4	438577.38	6754693.73	tracks (pad 3,4)
5	438542.07	6754722.80	tracks (pad 3,4)
6	438538.56	6754725.77	tracks (pad 3,4)
7	438540.18	6754731.76	tracks (pad 3,4)
8	438544.96	6754728.02	tracks (pad 3,4)
9	438580.07	6754698.74	tracks (pad 3,4)
10	438630.68	6754675.08	tracks (pad 3,4)
11	438665.12	6754663.07	tracks (pad 3,4)
1	438702.18	6754453.08	tracks (pad 5,6)
2	438696.68	6754445.74	tracks (pad 5,6)
3	438693.71	6754439.18	tracks (pad 5,6)
4	438684.79	6754436.36	tracks (pad 5,6)
5	438679.68	6754429.13	tracks (pad 5,6)
6	438674.54	6754427.89	tracks (pad 5,6)
7	438665.65	6754421.63	tracks (pad 5,6)
8	438656.34	6754419.59	tracks (pad 5,6)
9	438651.29	6754419.12	tracks (pad 5,6)
10	438644.88	6754419.86	tracks (pad 5,6)
11	438618.25	6754425.81	tracks (pad 5,6)
12	438608.60	6754431.30	tracks (pad 5,6)
13	438590.75	6754447.05	tracks (pad 5,6)
14	438577.34	6754449.52	tracks (pad 5,6)
15	438575.46	6754455.72	tracks (pad 5,6)
16	438578.76	6754455.74	tracks (pad 5,6)
17	438592.18	6754452.82	tracks (pad 5,6)
18	438611.59	6754436.19	tracks (pad 5,6)
19	438621.23	6754431.03	tracks (pad 5,6)
20	438646.40	6754425.52	tracks (pad 5,6)
21	438654.27	6754425.23	tracks (pad 5,6)
22	438664.55	6754426.62	tracks (pad 5,6)
23	438671.12	6754432.86	tracks (pad 5,6)
24	438676.94	6754434.66	tracks (pad 5,6)
25	438681.08	6754440.55	tracks (pad 5,6)
26	438689.31	6754444.37	tracks (pad 5,6)
27	438691.71	6754449.14	tracks (pad 5,6)
28	438694.12	6754453.37	tracks (pad 5,6)
29	438702.18	6754453.08	tracks (pad 5,6)
1	438729.28	6754252.12	tracks (pad 7,8)
2	438729.19	6754251.01	tracks (pad 7,8)
3	438722.04	6754243.99	tracks (pad 7,8)
4	438713.13	6754221.89	tracks (pad 7,8)

Coordinate No	Easting	Northing	Description
5	438705.48	6754201.46	tracks (pad 7,8)
6	438714.97	6754187.22	tracks (pad 7,8)
7	438692.50	6754123.39	tracks (pad 7,8)
8	438665.58	6754111.38	tracks (pad 7,8)
9	438663.31	6754117.02	tracks (pad 7,8)
10	438687.63	6754127.13	tracks (pad 7,8)
11	438707.89	6754186.63	tracks (pad 7,8)
12	438699.46	6754201.21	tracks (pad 7,8)
13	438707.49	6754223.52	tracks (pad 7,8)
14	438716.69	6754246.51	tracks (pad 7,8)
15	438724.99	6754256.19	tracks (pad 7,8)
16	438729.28	6754252.12	tracks (pad 7,8)
1	438769.02	6754065.29	tracks (pad 9,10)
2	438763.77	6754068.37	tracks (pad 9,10)
3	438759.78	6754069.01	tracks (pad 9,10)
4	438746.77	6754069.27	tracks (pad 9,10)
5	438742.69	6754069.47	tracks (pad 9,10)
6	438730.76	6754067.30	tracks (pad 9,10)
7	438721.57	6754061.27	tracks (pad 9,10)
8	438713.74	6754055.13	tracks (pad 9,10)
9	438706.39	6754050.44	tracks (pad 9,10)
10	438696.68	6754051.05	tracks (pad 9,10)
11	438679.86	6754054.62	tracks (pad 9,10)
12	438678.28	6754060.37	tracks (pad 9,10)
13	438681.09	6754060.50	tracks (pad 9,10)
14	438701.70	6754056.18	tracks (pad 9,10)
15	438706.74	6754056.87	tracks (pad 9,10)
16	438712.46	6754059.45	tracks (pad 9,10)
17	438723.76	6754069.15	tracks (pad 9,10)
18	438730.16	6754071.95	tracks (pad 9,10)
19	438735.19	6754073.75	tracks (pad 9,10)
20	438744.22	6754074.80	tracks (pad 9,10)
21	438747.13	6754075.15	tracks (pad 9,10)
22	438761.89	6754074.56	tracks (pad 9,10)
23	438766.75	6754073.59	tracks (pad 9,10)
24	438769.02	6754065.29	tracks (pad 9,10)
1	438874.19	6753466.19	tracks (pad 15,16)
2	438869.75	6753460.96	tracks (pad 15,16)
3	438855.81	6753454.57	tracks (pad 15,16)
4	438849.99	6753452.76	tracks (pad 15,16)
5	438844.94	6753452.74	tracks (pad 15,16)
6	438842.22	6753454.27	tracks (pad 15,16)
7	438839.41	6753452.71	tracks (pad 15,16)
8	438836.51	6753450.47	tracks (pad 15,16)

Coordinate No	Easting	Northing	Description
9	438827.32	6753445.55	tracks (pad 15,16)
10	438821.31	6753443.19	tracks (pad 15,16)
11	438817.35	6753440.07	tracks (pad 15,16)
12	438814.24	6753440.49	tracks (pad 15,16)
13	438810.46	6753437.92	tracks (pad 15,16)
14	438808.04	6753437.02	tracks (pad 15,16)
15	438806.56	6753441.56	tracks (pad 15,16)
16	438808.70	6753441.68	tracks (pad 15,16)
17	438812.86	6753444.47	tracks (pad 15,16)
18	438815.57	6753444.49	tracks (pad 15,16)
19	438818.76	6753446.94	tracks (pad 15,16)
20	438833.58	6753453.67	tracks (pad 15,16)
21	438836.76	6753457.68	tracks (pad 15,16)
22	438843.17	6753458.60	tracks (pad 15,16)
23	438847.44	6753458.18	tracks (pad 15,16)
24	438853.25	6753459.98	tracks (pad 15,16)
25	438863.04	6753464.14	tracks (pad 15,16)
26	438874.19	6753466.19	tracks (pad 15,16)
1	439002.33	6753177.57	tracks (pad 17,18)
2	438997.50	6753174.00	tracks (pad 17,18)
3	438993.94	6753185.61	tracks (pad 17,18)
4	438987.94	6753200.76	tracks (pad 17,18)
5	438982.05	6753212.14	tracks (pad 17,18)
6	438979.67	6753222.77	tracks (pad 17,18)
7	438978.37	6753228.30	tracks (pad 17,18)
8	438976.30	6753234.38	tracks (pad 17,18)
9	438974.23	6753239.69	tracks (pad 17,18)
10	438967.11	6753246.74	tracks (pad 17,18)
11	438963.31	6753249.83	tracks (pad 17,18)
12	438956.88	6753252.78	tracks (pad 17,18)
13	438955.61	6753254.55	tracks (pad 17,18)
14	438954.33	6753258.86	tracks (pad 17,18)
15	438952.68	6753275.59	tracks (pad 17,18)
16	438954.18	6753285.90	tracks (pad 17,18)
17	438960.00	6753287.04	tracks (pad 17,18)
18	438958.80	6753274.84	tracks (pad 17,18)
19	438960.45	6753257.46	tracks (pad 17,18)
20	438970.77	6753251.53	tracks (pad 17,18)
21	438979.17	6753242.93	tracks (pad 17,18)
22	438981.92	6753236.74	tracks (pad 17,18)
23	438985.07	6753228.12	tracks (pad 17,18)
24	438985.69	6753222.14	tracks (pad 17,18)
25	438987.48	6753214.28	tracks (pad 17,18)
26	438993.46	6753203.34	tracks (pad 17,18)

Coordinate No	Easting	Northing	Description
27	439002.33	6753177.57	tracks (pad 17,18)
1	439063.42	6752703.66	tracks (pad 22,23)
2	439033.15	6752700.50	tracks (pad 22,23)
3	439019.18	6752697.66	tracks (pad 22,23)
4	438969.82	6752689.08	tracks (pad 22,23)
5	438969.59	6752694.95	tracks (pad 22,23)
6	439018.66	6752703.75	tracks (pad 22,23)
7	439032.73	6752706.15	tracks (pad 22,23)
8	439062.32	6752709.52	tracks (pad 22,23)
9	439063.42	6752703.66	tracks (pad 22,23)
1	438997.75	6752964.03	tracks (pad 20,21)
2	438967.20	6752958.88	tracks (pad 20,21)
3	438968.53	6752965.42	tracks (pad 20,21)
4	438996.94	6752970.12	tracks (pad 20,21)
5	438997.75	6752964.03	tracks (pad 20,21)
1	438990.86	6752513.13	tracks (pad 24,25)
2	439004.83	6752515.09	tracks (pad 24,25)
3	439014.06	6752513.03	tracks (pad 24,25)
4	439018.52	6752514.50	tracks (pad 24,25)
5	439021.44	6752512.63	tracks (pad 24,25)
6	439030.84	6752515.34	tracks (pad 24,25)
7	439047.63	6752515.98	tracks (pad 24,25)
8	439060.64	6752515.61	tracks (pad 24,25)
9	439069.88	6752513.00	tracks (pad 24,25)
10	439079.18	6752515.49	tracks (pad 24,25)
11	439082.97	6752515.51	tracks (pad 24,25)
12	439084.22	6752517.62	tracks (pad 24,25)
13	439087.30	6752521.74	tracks (pad 24,25)
14	439091.97	6752519.43	tracks (pad 24,25)
15	439095.36	6752520.67	tracks (pad 24,25)
16	439117.19	6752523.89	tracks (pad 24,25)
17	439120.01	6752523.35	tracks (pad 24,25)
18	439119.36	6752517.59	tracks (pad 24,25)
19	439094.42	6752514.90	tracks (pad 24,25)
20	439090.75	6752512.78	tracks (pad 24,25)
21	439089.18	6752516.21	tracks (pad 24,25)
22	439086.96	6752512.98	tracks (pad 24,25)
23	439081.05	6752510.62	tracks (pad 24,25)
24	439069.23	6752507.12	tracks (pad 24,25)
25	439059.60	6752509.84	tracks (pad 24,25)
26	439047.27	6752510.00	tracks (pad 24,25)
27	439031.45	6752509.47	tracks (pad 24,25)
28	439019.63	6752506.97	tracks (pad 24,25)
29	439018.16	6752508.84	tracks (pad 24,25)

Coordinate No	Easting	Northing	Description
30	439015.16	6752507.05	tracks (pad 24,25)
31	439004.86	6752509.22	tracks (pad 24,25)
32	438998.95	6752506.41	tracks (pad 24,25)
33	438995.94	6752506.95	tracks (pad 24,25)
34	438991.08	6752507.70	tracks (pad 24,25)
35	438990.86	6752513.13	tracks (pad 24,25)
1	438857.43	6753856.79	tracks (pad 11,12)
2	438853.64	6753838.71	tracks (pad 11,12)
3	438834.73	6753816.56	tracks (pad 11,12)
4	438830.26	6753799.92	tracks (pad 11,12)
5	438828.45	6753793.48	tracks (pad 11,12)
6	438821.66	6753792.34	tracks (pad 11,12)
7	438804.49	6753789.36	tracks (pad 11,12)
8	438782.40	6753781.38	tracks (pad 11,12)
9	438744.33	6753783.83	tracks (pad 11,12)
10	438735.69	6753784.34	tracks (pad 11,12)
11	438731.56	6753776.56	tracks (pad 11,12)
12	438724.73	6753763.67	tracks (pad 11,12)
13	438720.30	6753739.93	tracks (pad 11,12)
14	438711.90	6753730.36	tracks (pad 11,12)
15	438710.81	6753735.12	tracks (pad 11,12)
16	438714.94	6753742.45	tracks (pad 11,12)
17	438720.45	6753765.75	tracks (pad 11,12)
18	438730.53	6753787.08	tracks (pad 11,12)
19	438733.52	6753789.42	tracks (pad 11,12)
20	438737.50	6753789.89	tracks (pad 11,12)
21	438781.40	6753787.13	tracks (pad 11,12)
22	438802.42	6753794.89	tracks (pad 11,12)
23	438814.06	6753796.84	tracks (pad 11,12)
24	438820.46	6753799.09	tracks (pad 11,12)
25	438824.50	6753805.98	tracks (pad 11,12)
26	438826.40	6753812.75	tracks (pad 11,12)
27	438829.19	6753817.64	tracks (pad 11,12)
28	438834.39	6753825.98	tracks (pad 11,12)
29	438848.09	6753841.34	tracks (pad 11,12)
30	438850.09	6753848.67	tracks (pad 11,12)
31	438850.45	6753854.65	tracks (pad 11,12)
32	438848.77	6753859.74	tracks (pad 11,12)
33	438844.07	6753866.92	tracks (pad 11,12)
34	438850.38	6753868.28	tracks (pad 11,12)
35	438857.43	6753856.79	tracks (pad 11,12)
1	438825.21	6753673.35	tracks (pad 13,14)
2	438813.37	6753672.84	tracks (pad 13,14)
3	438810.45	6753674.49	tracks (pad 13,14)

Coordinate No	Easting	Northing	Description
4	438804.54	6753672.57	tracks (pad 13,14)
5	438798.61	6753673.43	tracks (pad 13,14)
6	438795.63	6753667.65	tracks (pad 13,14)
7	438795.65	6753663.88	tracks (pad 13,14)
8	438790.52	6753662.75	tracks (pad 13,14)
9	438784.69	6753662.61	tracks (pad 13,14)
10	438779.37	6753659.36	tracks (pad 13,14)
11	438771.12	6753658.43	tracks (pad 13,14)
12	438762.39	6753658.16	tracks (pad 13,14)
13	438746.10	6753653.42	tracks (pad 13,14)
14	438735.44	6753650.37	tracks (pad 13,14)
15	438719.64	6753646.74	tracks (pad 13,14)
16	438718.63	6753653.27	tracks (pad 13,14)
17	438744.52	6753659.18	tracks (pad 13,14)
18	438761.38	6753664.03	tracks (pad 13,14)
19	438777.20	6753665.00	tracks (pad 13,14)
20	438783.30	6753668.36	tracks (pad 13,14)
21	438788.06	6753667.72	tracks (pad 13,14)
22	438788.73	6753669.83	tracks (pad 13,14)
23	438792.10	6753674.72	tracks (pad 13,14)
24	438794.32	6753677.51	tracks (pad 13,14)
25	438799.56	6753678.20	tracks (pad 13,14)
26	438804.51	6753678.67	tracks (pad 13,14)
27	438811.78	6753679.82	tracks (pad 13,14)
28	438817.23	6753678.07	tracks (pad 13,14)
29	438824.60	6753679.44	tracks (pad 13,14)
30	438825.21	6753673.35	tracks (pad 13,14)
1	438805.19	6753425.60	tracks (north south)
2	438802.53	6753433.23	tracks (north south)
3	438797.91	6753443.29	tracks (north south)
4	438777.15	6753495.81	tracks (north south)
5	438765.07	6753538.18	tracks (north south)
6	438764.18	6753541.83	tracks (north south)
7	438752.20	6753549.41	tracks (north south)
8	438746.52	6753557.25	tracks (north south)
9	438745.82	6753561.34	tracks (north south)
10	438743.68	6753581.61	tracks (north south)
11	438742.28	6753587.81	tracks (north south)
12	438727.84	6753601.36	tracks (north south)
13	438722.87	6753605.76	tracks (north south)
14	438721.38	6753611.07	tracks (north south)
15	438714.83	6753637.74	tracks (north south)
16	438713.54	6753642.17	tracks (north south)
17	438711.56	6753650.69	tracks (north south)

Coordinate No	Easting	Northing	Description
18	438709.87	6753657.99	tracks (north south)
19	438707.49	6753667.18	tracks (north south)
20	438708.83	6753670.73	tracks (north south)
21	438711.85	6753685.70	tracks (north south)
22	438704.86	6753721.90	tracks (north south)
23	438703.06	6753732.53	tracks (north south)
24	438694.53	6753784.23	tracks (north south)
25	438696.88	6753815.04	tracks (north south)
26	438687.45	6753853.99	tracks (north south)
27	438679.71	6753903.15	tracks (north south)
28	438670.67	6753959.83	tracks (north south)
29	438675.39	6754020.13	tracks (north south)
30	438669.53	6754061.54	tracks (north south)
31	438656.29	6754105.35	tracks (north south)
32	438655.00	6754109.78	tracks (north south)
33	438638.02	6754162.09	tracks (north south)
34	438637.27	6754175.50	tracks (north south)
35	438629.88	6754195.18	tracks (north south)
36	438628.40	6754199.38	tracks (north south)
37	438629.06	6754204.15	tracks (north south)
38	438630.20	6754207.15	tracks (north south)
39	438635.53	6754209.84	tracks (north south)
40	438632.61	6754229.54	tracks (north south)
41	438622.43	6754244.78	tracks (north south)
42	438616.58	6754248.07	tracks (north south)
43	438613.66	6754251.05	tracks (north south)
44	438611.47	6754259.68	tracks (north south)
45	438610.20	6754280.06	tracks (north south)
46	438610.65	6754358.73	tracks (north south)
47	438616.57	6754359.10	tracks (north south)
48	438616.02	6754279.87	tracks (north south)
49	438616.60	6754262.59	tracks (north south)
50	438618.58	6754255.84	tracks (north south)
51	438621.22	6754252.20	tracks (north south)
52	438625.31	6754250.00	tracks (north south)
53	438638.03	6754231.90	tracks (north south)
54	438641.64	6754211.20	tracks (north south)
55	438638.96	6754204.65	tracks (north south)
56	438635.87	6754201.09	tracks (north south)
57	438635.70	6754196.54	tracks (north south)
58	438642.40	6754178.18	tracks (north south)
59	438643.65	6754162.12	tracks (north south)
60	438660.62	6754112.13	tracks (north south)
61	438661.91	6754107.37	tracks (north south)

Coordinate No	Easting	Northing	Description
62	438675.74	6754063.35	tracks (north south)
63	438681.60	6754019.95	tracks (north south)
64	438676.49	6753959.20	tracks (north south)
65	438692.68	6753856.46	tracks (north south)
66	438702.80	6753815.74	tracks (north south)
67	438700.74	6753784.04	tracks (north south)
68	438708.88	6753733.00	tracks (north south)
69	438710.78	6753722.93	tracks (north south)
70	438717.68	6753686.18	tracks (north south)
71	438714.66	6753669.54	tracks (north south)
72	438714.00	6753665.33	tracks (north south)
73	438715.59	6753659.46	tracks (north south)
74	438716.60	6753652.49	tracks (north south)
75	438717.11	6753646.40	tracks (north south)
76	438718.10	6753643.63	tracks (north south)
77	438720.65	6753639.21	tracks (north south)
78	438727.20	6753612.32	tracks (north south)
79	438732.29	6753605.37	tracks (north south)
80	438746.43	6753591.93	tracks (north south)
81	438750.25	6753586.96	tracks (north south)
82	438749.21	6753580.75	tracks (north south)
83	438751.74	6753561.49	tracks (north south)
84	438753.13	6753557.06	tracks (north south)
85	438757.70	6753555.31	tracks (north south)
86	438764.24	6753549.14	tracks (north south)
87	438768.62	6753545.73	tracks (north south)
88	438770.20	6753541.97	tracks (north south)
89	438770.69	6753539.87	tracks (north south)
90	438782.96	6753497.61	tracks (north south)
91	438803.63	6753444.98	tracks (north south)
92	438807.37	6753436.02	tracks (north south)
93	438810.51	6753428.84	tracks (north south)
94	438814.66	6753415.90	tracks (north south)
95	438816.77	6753402.06	tracks (north south)
96	438818.87	6753390.88	tracks (north south)
97	438818.91	6753383.34	tracks (north south)
98	438814.06	6753382.87	tracks (north south)
99	438819.00	6753368.05	tracks (north south)
100	438824.95	6753361.77	tracks (north south)
101	438833.90	6753340.10	tracks (north south)
102	438835.21	6753332.24	tracks (north south)
103	438834.06	6753311.51	tracks (north south)
104	438834.87	6753303.98	tracks (north south)
105	438839.44	6753302.90	tracks (north south)

Coordinate No	Easting	Northing	Description
106	438846.95	6753279.45	tracks (north south)
107	438852.21	6753257.98	tracks (north south)
108	438857.11	6753248.37	tracks (north south)
109	438857.82	6753242.50	tracks (north south)
110	438856.14	6753231.63	tracks (north south)
111	438862.06	6753213.94	tracks (north south)
112	438877.49	6753196.62	tracks (north south)
113	438878.97	6753192.20	tracks (north south)
114	438878.49	6753189.98	tracks (north south)
115	438876.21	6753182.10	tracks (north south)
116	438869.03	6753181.51	tracks (north south)
117	438872.39	6753187.84	tracks (north south)
118	438873.24	6753192.17	tracks (north south)
119	438864.16	6753201.98	tracks (north south)
120	438859.56	6753207.83	tracks (north south)
121	438856.63	6753211.14	tracks (north south)
122	438853.87	6753219.43	tracks (north south)
123	438850.82	6753227.50	tracks (north south)
124	438850.12	6753231.27	tracks (north south)
125	438851.25	6753237.92	tracks (north south)
126	438851.98	6753245.35	tracks (north south)
127	438849.14	6753249.77	tracks (north south)
128	438846.58	6753256.62	tracks (north south)
129	438841.13	6753278.42	tracks (north south)
130	438835.39	6753298.56	tracks (north south)
131	438830.52	6753300.86	tracks (north south)
132	438828.33	6753312.15	tracks (north south)
133	438829.38	6753332.76	tracks (north south)
134	438828.87	6753337.64	tracks (north south)
135	438821.08	6753359.31	tracks (north south)
136	438815.34	6753361.83	tracks (north south)
137	438813.47	6753366.25	tracks (north south)
138	438808.25	6753381.29	tracks (north south)
139	438808.70	6753387.06	tracks (north south)
140	438812.95	6753390.18	tracks (north south)
141	438808.94	6753415.31	tracks (north south)
142	438805.19	6753425.60	tracks (north south)

Table 3: *Lepidosperma* location Coordinates (MGA Zone 50)

Coordinate No	Easting	Northing
1	438678	6754440
2	438688	6754432
3	438707	6754468

Coordinate No	Easting	Northing
4	438754	6754487
5	438819	6753654
6	438658	6754418
7	438659	6754442
8	438684	6754443
9	438702	6754026
10	438702	6754447
11	438714	6754438
12	438748	6754469
13	438881	6753680

Table 4: Malleefowl mound location Co-ordinates (MGA Zone 50)

Coordinate	Easting	Northing
North	438990.12	6752569.78
South	438977.82	6752896.27

All coordinates are in metres, listed in Map Grid of Australia Zone 50 (MGA Zone 50), datum of Geocentric Datum of Australia 1994 (GDA94).

Coordinates defining the Exploration Drilling Feral Prospect development envelopment as shown in Figure 2 are held by the Office of the EPA, dated 11 and 15 May 2015 (Document numbers 2015-0001142336 and 2015-0001142335).