

**THIS DOCUMENT**

This document has been produced by the Office of the Appeals Convenor as an electronic version of the original Statement for the proposal listed below as signed by the Minister and held by this Office. Whilst every effort is made to ensure its accuracy, no warranty is given as to the accuracy or completeness of this document.

The State of Western Australia and its agents and employees disclaim liability, whether in negligence or otherwise, for any loss or damage resulting from reliance on the accuracy or completeness of this document.

Copyright in this document is reserved to the Crown in right of the State of Western Australia. Reproduction except in accordance with copyright law is prohibited.

Published on: 19 August 2015

Statement No. 1014

**STATEMENT THAT A REVISED PROPOSAL MAY BE IMPLEMENTED**  
**(*Environmental Protection Act 1986*)**

**PILBARA IRON ORE PROJECT – REVISED PROPOSAL**

**Proposal:** Proposal to amend the Pilbara Iron Ore Project – Stage 1 to include the Paragon deposit and additional infrastructure such as access roads, airport, accommodation camps, power station, ore processing facility, tailings storage facilities.

**Proponent:** Flinders Mines Limited  
Australian Company Number 091 118 044

**Proponent Address:** Flinders Mines Limited  
Level 1, 136 Frome Street  
ADELAIDE SA 5000

**Assessment Number:** 2045

**Report of the Environmental Protection Authority:** 1548

**Previous Assessment Number:** 1903

**Previous Report of the Environmental Protection Authority:** 1456

**Previous Statement Number:** 924

Pursuant to section 45 of the *Environmental Protection Act 1986* (EP Act) it has been agreed that the Proposal described and documented in Table 1 of Schedule 1 may be implemented and that, pursuant to section 45B of EP Act, the implementation of the Proposal is subject to the implementation conditions in Ministerial Statement No. 924 dated 11 January 2013 as amended as follows:

**Insert** the following additional condition into Ministerial Statement No. 924:

**8 Flora and Vegetation in the External Infrastructure Development Envelope**

8-1 The proponent shall ensure that infrastructure within the Additional External Infrastructure Development Envelope (delineated in Figure 1 and defined by the geographic coordinates in Schedule 2) are sited and constructed to avoid Declared Rare Flora (DRF), Priority 1 Listed Flora species and Threatened Ecological Communities (TECs) where practicable, and minimise the impact to other conservation significant flora or vegetation.

8-2 Prior to ground disturbing activities, the proponent shall prepare and submit a Flora and Vegetation Survey Plan to the CEO on advice of the Department of Parks and Wildlife. The Flora and Vegetation Survey Plan shall:

- (1) Include spatially accurate, rectified and geographically referenced data and maps showing the location of potential disturbance areas within the Additional External Infrastructure Development Envelope (delineated in Figure 1 and defined by the geographic coordinates in Schedule 2);
- (2) when implemented, determine whether there are any DRF, Priority 1 Listed Flora species, TECs or other conservation significant flora or vegetation located in any potential disturbance areas within the Additional External Infrastructure Development Envelope (delineated in Figure 1 and defined by the geographic coordinates in Schedule 2);
- (3) identify any areas of habitat within the Additional External Infrastructure Development Envelope likely to support DRF, Priority 1 Listed Flora species, TECs other conservation significant flora or vegetation;
- (4) identify any areas within the Additional External Infrastructure Development Envelope (delineated in Figure 1 and defined by the geographic coordinates in Schedule 2) which have not been previously surveyed;
- (5) detail the proposed methodology, including approach and timing and for the Flora and Vegetation Survey, including:
  - a. a Level 2 survey of any unsurveyed areas in the Additional External Infrastructure Development Envelope which have the potential to be disturbed in accordance with EPA's Guidance Statement 51 - *Terrestrial Flora and Vegetation Surveys for Environmental Impact Assessment in Western Australia* (June 2004) or its revisions, to the requirements of the CEO; and
  - b. a targeted Flora and Vegetation survey of any habitat areas in the Additional External Infrastructure Development Envelope with the potential to be disturbed which are likely to support DRF, Priority 1 Listed Flora species, TECs other conservation significant flora or vegetation;

- 8-3 After receiving notice in writing from the CEO that the Flora and Vegetation Survey Plan satisfies the requirements of condition 8-2, or as otherwise agreed by the CEO, the proponent shall undertake the Flora and Vegetation Survey in accordance with the Flora and Vegetation Survey Plan.
- 8-4 To meet the requirements of condition 8-3, the proponent shall identify and spatially define the locations of DRF, Priority 1 Listed Flora species, TECs and other conservation significant flora species and vegetation.
- 8-5 On completion of the Flora and Vegetation Survey the proponent shall report to the CEO on the following:
- (1) completion of the Flora and Vegetation Survey in accordance with the Flora and Vegetation Survey Plan; and
  - (2) the results of the Flora and Vegetation Survey, including but not limited to, the information collected under condition 8-4.
- 8-6 Prior to ground disturbing activities, the proponent shall prepare and submit a Flora and Vegetation Management Plan to the CEO on advice of the Department of Parks and Wildlife. The Flora and Vegetation Management Plan shall:
- (1) demonstrate that all infrastructure is sited and constructed to avoid DRF, Priority 1 Listed Flora species and TECs where practicable and minimise the impact to other conservation significant flora or vegetation, identified and spatially defined in the Flora and Vegetation Survey Plan;
  - (2) identify potential direct and indirect impacts to DRF, Priority 1 Listed Flora species, TECs and other conservation significant flora or vegetation;
  - (3) specify management actions that will be implemented to ensure that indirect impacts to conservation significant flora and vegetation species are minimised;
  - (4) provide a protocol or procedure for the monitoring and review of the Flora and Vegetation Management Plan to ensure that the Flora and Vegetation Management Plan is meeting the objective specified in condition 8-1; and
  - (5) provide a reporting schedule to demonstrate to the CEO that the Flora and Vegetation Management Plan is meeting the objective specified in condition 8-1.
- 8-7 After receiving notice in writing from the CEO that the Flora and Vegetation Management Plan satisfies the requirements of condition 8-6, the proponent shall:
- (1) implement the management actions and monitor in accordance with the requirements of the approved Flora and Vegetation Management Plan; and

- (2) continue to implement the approved Flora and Vegetation Management Plan until the CEO has confirmed by notice in writing that it has been demonstrated that the objective in condition 8-1 has been met and therefore the implementation of the management actions and monitoring is no longer required.
- 8-8 The proponent may review and revise the Flora and Vegetation Management Plan, on advice of the Department of Parks and Wildlife.
- 8-9 The proponent shall review and revise the Flora and Vegetation Management Plan as and when directed by the CEO.
- 8-10 The proponent shall implement the latest revision of the Flora and Vegetation Management Plan, which the CEO has confirmed by notice in writing, satisfies the requirements of condition 8-5.

[Signed 19 August 2015]

Albert Jacob MLA  
**MINISTER FOR ENVIRONMENT; HERITAGE**

**Table 1: Summary of key proposal characteristics**

<b>Proposal Title</b>	Pilbara Iron Ore Project – Revised Proposal
<b>Proponent Name</b>	Flinders Mines Ltd
<b>Short Description</b>	Amend the Flinders Pilbara Iron Ore Project - Stage 1 to include the Paragon deposit and additional infrastructure such as access roads, airport, accommodation camps, power station, ore processing facility, tailings storage facilities and other supporting infrastructure.

**Table 2: Physical and Operational Elements**

<b>Element</b>	<b>Location</b>	<b>Proposed Extent</b>
Mine pits, power station, tailings storage facility and other mine infrastructure	Figure 1 and the coordinates defined in Schedule 2	Clearing of no more than 100 ha of native vegetation within the Additional Paragon Deposit Mine Development Envelope of 269 ha.
External infrastructure including access roads, airport; and accommodation camp	Figure 1 and the coordinates defined in Schedule 2	Clearing of no more than an additional 200 ha of native vegetation within the Additional External Infrastructure Development Envelope of 1,316 ha.
Tailings storage	Additional Paragon Deposit Mine Development Envelope (Figure 1 and the coordinates defined in Schedule 2), and the PIOP Stage 1 Project Area (Figure 3 of Ministerial Statement 924)	Storage of tailings in mined out pits that are mined above the water table
Dewatering		Groundwater abstraction of up to 2 GL/a.
Backfilling of mine pits		Mine pits are to be backfilled so that the final surface levels are at a higher elevation than the predicted post development groundwater levels to prevent the formation of pit lakes.

**Table 3: Abbreviations and Definitions**

Acronym or Abbreviation	Definition or Term
CEO	The Chief Executive Officer of the Department of the Public Service of the State responsible for the administration of section 48 of the <i>Environmental Protection Act 1986</i> , or his delegate.
GL/a	Gigalitre per annum
ha	Hectare

**Figures (attached)**

Figure 1 Development envelopes (This figure is a representation of the coordinates in Schedule 2)

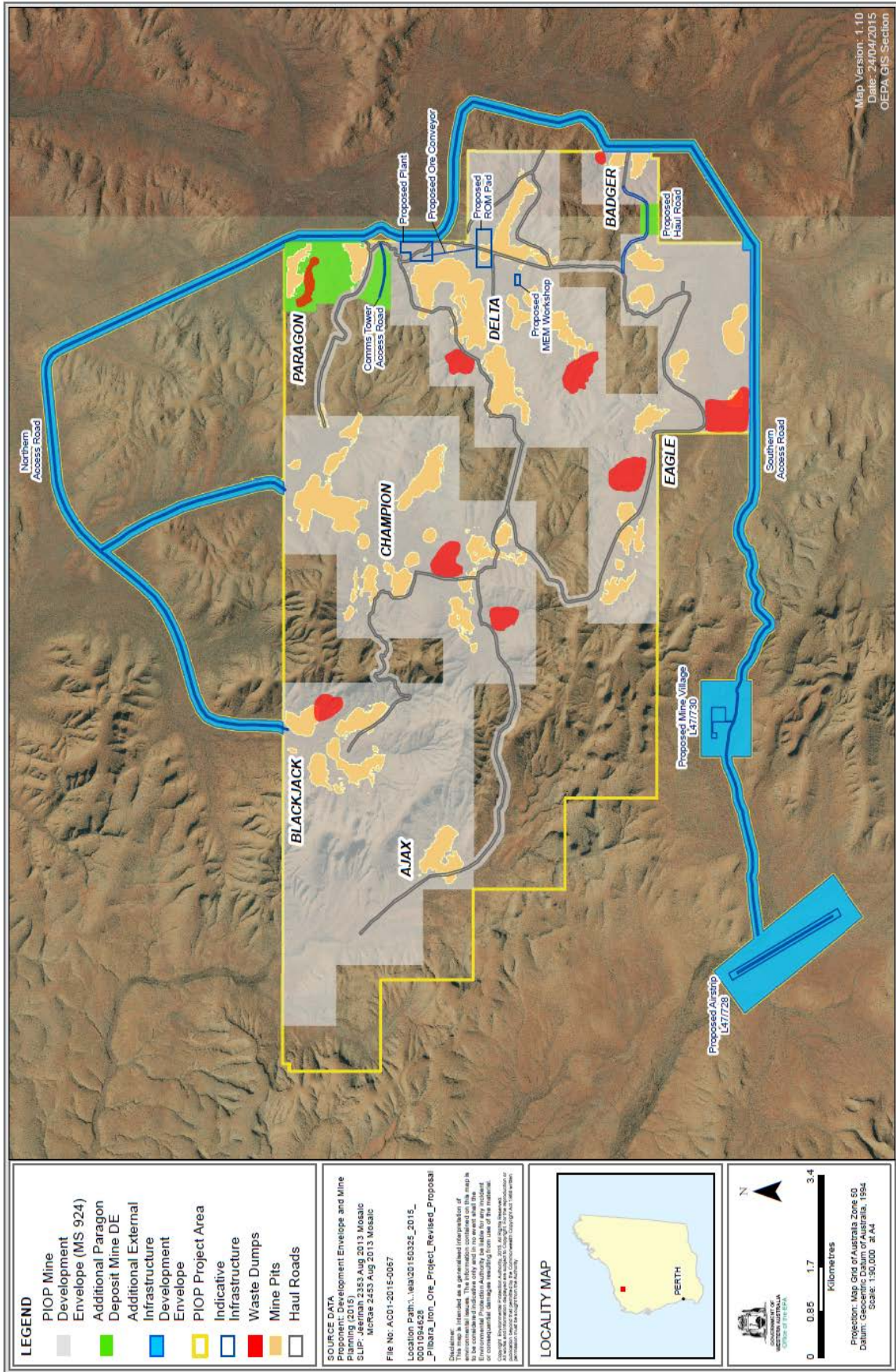


Figure 1 – Development envelopes

**PILBARA IRON ORE PROPOSAL****Coordinates that define the Development Envelopes**

All co-ordinates are in metres, listed in Map Grid of Australia Zone 50 (MGA Zone 50), datum of Geocentric Datum of Australia 1994 (GDA94).

**Additional Paragon Deposit Mine Development Envelope Co-ordinates**

Coordinate Number	Easting	Northing
1	551708	7554626
2	551677	7554623
3	551641	7554602
4	551637	7554599
5	551622	7554583
6	551613	7554574
7	551610	7554569
8	551606	7554570
9	551597	7554571
10	551583	7554571
11	551574	7554571
12	551567	7554570
13	551544	7554566
14	551513	7554549
15	551505	7554542
16	551500	7554538
17	551499	7554536
18	551498	7554536
19	551485	7554536
20	551406	7554537
21	551329	7554549
22	551254	7554564
23	551166	7554592
24	551098	7554613
25	551025	7554649
26	551022	7554651
27	550946	7554686
28	550863	7554738
29	550824	7554778
30	550811	7554808
31	550797	7554863
32	550796	7554867

Coordinate Number	Easting	Northing
33	550784	7554911
34	550778	7554941
35	550766	7554970
36	550757	7554987
37	550737	7555029
38	550727	7555045
39	550710	7555063
40	550658	7555106
41	550645	7555115
42	550629	7555123
43	550581	7555140
44	550581	7555140
45	550545	7555153
46	550541	7555155
47	550542	7555544
48	550390	7555545
49	550391	7556032
50	550392	7556170
51	551713	7556166
52	551708	7554626
53	551447	7554025
54	550402	7554025
55	550644	7554691
56	550649	7554680
57	550649	7554679
58	550669	7554649
59	550729	7554589
60	550733	7554586
61	550746	7554576
62	550844	7554513
63	550856	7554507
64	550937	7554470



Coordinate Number	Easting	Northing
65	551015	7554431
66	551029	7554425
67	551030	7554425
68	551106	7554401
69	551106	7554401
70	551200	7554372
71	551210	7554369
72	551292	7554353
73	551295	7554352
74	551381	7554338
75	551396	7554337
76	551476	7554336
77	551483	7554324
78	551486	7554320
79	551499	7554306
80	551500	7554305
81	551512	7554295
82	551528	7554285
83	551530	7554283
84	551535	7554272
85	551539	7554262
86	551542	7554256
87	551546	7554248
88	551557	7554231
89	551559	7554229
90	551563	7554224
91	551567	7554220
92	551569	7554218
93	551571	7554216
94	551576	7554211

Coordinate Number	Easting	Northing
95	551588	7554203
96	551587	7554202
97	551581	7554190
98	551573	7554163
99	551572	7554153
100	551572	7554153
101	551572	7554151
102	551564	7554141
103	551559	7554133
104	551558	7554131
105	551537	7554122
106	551513	7554105
107	551511	7554104
108	551508	7554101
109	551499	7554092
110	551495	7554086
111	551481	7554064
112	551479	7554061
113	551479	7554060
114	551472	7554036
115	551471	7554030
116	551471	7554027
117	551448	7554025
118	551447	7554025
119	552411	7549000
120	552410	7548645
121	551837	7548649
122	551838	7549001
123	552411	7549000

## Additional External Infrastructure Development Envelope Co-ordinates

Coordinate Number	Easting	Northing
1	551708	7554626
2	551713	7556166
3	551596	7556167
4	551219	7556941
5	549632	7560570
6	549530	7560758
7	549459	7560825
8	549352	7560861
9	549215	7560869
10	547226	7560661
11	547098	7560629
12	546962	7560585
13	546736	7560490
14	546533	7560362
15	546316	7560199
16	546138	7560010
17	546008	7559869
18	546094	7559715
19	546193	7559539
20	546319	7559363
21	546450	7559111
22	546568	7558872
23	546608	7558761
24	546693	7558548
25	546807	7558300
26	546927	7557928
27	547073	7557364
28	547236	7556739
29	547263	7556542
30	547280	7556443
31	547262	7556337
32	547226	7556256
33	547180	7556187
34	546972	7556188
35	546963	7556193
36	546985	7556275
37	547054	7556359
38	547078	7556442
39	547041	7556695
40	546879	7557314

Coordinate Number	Easting	Northing
41	546735	7557870
42	546623	7558222
43	546510	7558467
44	546422	7558689
45	546386	7558789
46	546271	7559021
47	546151	7559254
48	546027	7559428
49	545920	7559618
50	545878	7559692
51	545647	7559396
52	545373	7559037
53	545096	7558706
54	544789	7558471
55	544463	7558292
56	544127	7558152
57	543836	7558064
58	543699	7558023
59	543230	7557886
60	542977	7557764
61	542857	7557675
62	542781	7557503
63	542743	7557269
64	542712	7557036
65	542717	7556813
66	542701	7556521
67	542690	7556265
68	542662	7556200
69	542446	7556201
70	542450	7556217
71	542491	7556295
72	542501	7556530
73	542517	7556812
74	542512	7557039
75	542544	7557296
76	542585	7557548
77	542684	7557779
78	542865	7557929
79	543151	7558069
80	543642	7558214

Coordinate Number	Easting	Northing
81	543836	7558272
82	544055	7558338
83	544372	7558469
84	544674	7558634
85	544950	7558843
86	545215	7559159
87	545488	7559517
88	545706	7559796
89	545797	7559923
90	545990	7560145
91	546176	7560341
92	546416	7560523
93	546636	7560663
94	546889	7560770
95	547039	7560819
96	547183	7560856
97	549202	7561068
98	549378	7561058
99	549543	7561007
100	549679	7560891
101	549810	7560661
102	551401	7557026
103	551801	7556201
104	551839	7556095
105	551908	7555901
106	551913	7554773
107	551913	7554594
108	551972	7554457
109	552046	7554340
110	552072	7554198
111	552055	7554130
112	551973	7554012
113	551913	7553858
114	551913	7553119
115	551998	7553029
116	552131	7552956
117	552298	7552896
118	552469	7552870
119	553277	7552857
120	553767	7552782
121	554186	7552686

Coordinate Number	Easting	Northing
122	554240	7552653
123	554420	7552441
124	554441	7552354
125	554433	7552320
126	554433	7552320
127	554293	7551719
128	554292	7551717
129	554135	7551107
130	554051	7550649
131	554169	7550209
132	554124	7550029
133	553920	7549803
134	553603	7549640
135	553606	7547921
136	551910	7546783
137	551810	7546711
138	551671	7546604
139	551538	7546605
140	549778	7546609
141	548658	7546611
142	548106	7546606
143	547069	7546606
144	546746	7546683
145	546596	7546818
146	546507	7546877
147	546388	7546921
148	546291	7546936
149	546211	7546925
150	546024	7546832
151	546003	7546811
152	545997	7546801
153	545991	7546786
154	545988	7546778
155	545984	7546769
156	545980	7546762
157	545974	7546755
158	545968	7546748
159	545962	7546742
160	545955	7546736
161	545948	7546731
162	545940	7546727

Coordinate Number	Easting	Northing
163	545932	7546724
164	545913	7546717
165	545905	7546714
166	545897	7546712
167	545889	7546711
168	545881	7546710
169	545870	7546706
170	545869	7546705
171	545838	7546693
172	545833	7546692
173	545827	7546690
174	545754	7546671
175	545752	7546671
176	545749	7546670
177	545658	7546651
178	545651	7546650
179	545647	7546650
180	545598	7546645
181	545589	7546644
182	545581	7546645
183	545573	7546646
184	545564	7546647
185	545556	7546650
186	545514	7546664
187	545506	7546667
188	545498	7546670
189	545481	7546680
190	545468	7546683
191	545442	7546684
192	545379	7546665
193	545311	7546644
194	545277	7546620
195	545227	7546574
196	545223	7546571
197	545197	7546549
198	545190	7546544
199	545182	7546539
200	545175	7546535
201	545166	7546532
202	545158	7546530
203	545139	7546525

Coordinate Number	Easting	Northing
204	545131	7546523
205	545122	7546522
206	545113	7546522
207	545104	7546523
208	545096	7546524
209	545087	7546526
210	545079	7546529
211	545071	7546532
212	545063	7546536
213	545033	7546554
214	544995	7546572
215	544955	7546581
216	544917	7546583
217	544866	7546573
218	544844	7546562
219	544801	7546511
220	544799	7546509
221	544797	7546507
222	544649	7546347
223	544643	7546341
224	544637	7546336
225	544630	7546331
226	544623	7546327
227	544615	7546323
228	544582	7546309
229	544574	7546306
230	544565	7546303
231	544557	7546302
232	544548	7546301
233	544503	7546299
234	544495	7546298
235	544487	7546299
236	544479	7546300
237	544471	7546302
238	544463	7546305
239	544455	7546308
240	544448	7546312
241	544441	7546316
242	544411	7546337
243	544404	7546342
244	544398	7546348

Coordinate Number	Easting	Northing
245	544392	7546354
246	544387	7546361
247	544382	7546368
248	544378	7546375
249	544364	7546402
250	544336	7546436
251	544292	7546466
252	544286	7546470
253	544201	7546535
254	544110	7546584
255	544044	7546605
256	544003	7546613
257	543996	7546615
258	543989	7546617
259	543982	7546620
260	543975	7546623
261	543969	7546627
262	543921	7546657
263	543857	7546689
264	543837	7546700
265	543834	7546701
266	543826	7546705
267	543758	7546750
268	543752	7546754
269	543747	7546759
270	543742	7546763
271	543682	7546823
272	543649	7546844
273	543614	7546859
274	543538	7546868
275	543459	7546873
276	543451	7546874
277	543447	7546875
278	543446	7546781
279	542031	7546785
280	542032	7547172
281	541975	7547170
282	541915	7547160
283	541872	7547144
284	541800	7547111
285	541797	7547109

Coordinate Number	Easting	Northing
286	541545	7547001
287	541537	7546998
288	541532	7546996
289	541454	7546975
290	541450	7546974
291	541444	7546973
292	541368	7546961
293	541366	7546961
294	541359	7546960
295	541288	7546956
296	541238	7546943
297	541096	7546894
298	541064	7546873
299	541056	7546868
300	541021	7546849
301	541013	7546846
302	541006	7546843
303	540998	7546840
304	540990	7546839
305	540982	7546838
306	540974	7546837
307	540939	7546837
308	540893	7546828
309	540890	7546827
310	540828	7546816
311	540239	7546662
312	540235	7546661
313	540227	7546659
314	540140	7546648
315	540135	7546647
316	540055	7546640
317	540051	7546640
318	540046	7546640
319	539949	7546640
320	539945	7546640
321	539939	7546640
322	539850	7546650
323	539842	7546651
324	539835	7546652
325	539827	7546655
326	539767	7546675

Coordinate Number	Easting	Northing
327	539741	7546680
328	539739	7546680
329	539709	7546670
330	539701	7546668
331	539699	7546668
332	539655	7546658
333	539647	7546657
334	539593	7546650
335	539584	7546649
336	539417	7546642
337	539331	7546634
338	538727	7546543
339	539797	7545135
340	539003	7544527
341	537191	7546911
342	537982	7547523
343	538590	7546723
344	539289	7546830
345	539296	7546831
346	539304	7546832
347	539401	7546842
348	539406	7546842
349	539571	7546849
350	539617	7546855
351	539653	7546862
352	539693	7546875
353	539701	7546877
354	539708	7546879
355	539716	7546879
356	539724	7546880
357	539749	7546880
358	539758	7546879
359	539766	7546878
360	539808	7546871
361	539816	7546870
362	539824	7546867
363	539882	7546847
364	539955	7546840
365	540042	7546840
366	540115	7546846
367	540194	7546857

Coordinate Number	Easting	Northing
368	540781	7547011
369	540784	7547011
370	540789	7547012
371	540853	7547024
372	540909	7547035
373	540915	7547037
374	540922	7547037
375	540929	7547038
376	540949	7547037
377	540958	7547042
378	540996	7547068
379	541003	7547072
380	541011	7547076
381	541019	7547079
382	541177	7547133
383	541178	7547134
384	541184	7547135
385	541248	7547152
386	541254	7547153
387	541260	7547154
388	541267	7547155
389	541342	7547159
390	541407	7547170
391	541473	7547188
392	541717	7547292
393	541791	7547327
394	541794	7547328
395	541798	7547330
396	541854	7547351
397	541861	7547353
398	541867	7547355
399	541874	7547356
400	541949	7547368
401	541951	7547369
402	541960	7547369
403	542032	7547373
404	542033	7547781
405	543449	7547777
406	543447	7547086
407	543485	7547072
408	543553	7547068

Coordinate Number	Easting	Northing
409	543559	7547067
410	543654	7547056
411	543661	7547054
412	543668	7547053
413	543674	7547051
414	543681	7547048
415	543735	7547025
416	543743	7547021
417	543748	7547018
418	543797	7546987
419	543804	7546983
420	543810	7546978
421	543815	7546973
422	543857	7546932
423	543876	7546912
424	543931	7546876
425	544015	7546834
426	544018	7546832
427	544024	7546829
428	544060	7546806
429	544089	7546800
430	544092	7546800
431	544100	7546797
432	544180	7546771
433	544189	7546768
434	544197	7546764
435	544303	7546708
436	544311	7546703
437	544317	7546699
438	544406	7546630
439	544459	7546595
440	544465	7546590
441	544471	7546586
442	544476	7546581
443	544481	7546575
444	544526	7546521
445	544529	7546516
446	544531	7546514
447	544649	7546641
448	544704	7546707
449	544709	7546713

Coordinate Number	Easting	Northing
450	544716	7546719
451	544722	7546725
452	544730	7546729
453	544737	7546733
454	544792	7546759
455	544800	7546763
456	544808	7546765
457	544816	7546767
458	544892	7546781
459	544899	7546783
460	544907	7546783
461	544914	7546783
462	544973	7546781
463	544980	7546780
464	544986	7546779
465	544992	7546778
466	545051	7546764
467	545057	7546762
468	545063	7546760
469	545069	7546758
470	545111	7546739
471	545146	7546771
472	545151	7546776
473	545155	7546778
474	545207	7546816
475	545214	7546821
476	545221	7546824
477	545229	7546828
478	545236	7546831
479	545322	7546857
480	545402	7546880
481	545410	7546882
482	545418	7546884
483	545427	7546884
484	545435	7546884
485	545485	7546882
486	545493	7546881
487	545499	7546880
488	545535	7546873
489	545542	7546871
490	545549	7546869

Coordinate Number	Easting	Northing
491	545556	7546866
492	545563	7546863
493	545585	7546851
494	545600	7546846
495	545623	7546848
496	545707	7546865
497	545772	7546882
498	545796	7546892
499	545819	7546901
500	545824	7546902
501	545842	7546929
502	545845	7546934
503	545849	7546939
504	545853	7546944
505	545902	7546993
506	545908	7546999
507	545914	7547004
508	545921	7547008
509	545928	7547012
510	546166	7547126
511	546298	7547135
512	546425	7547120
513	546598	7547057
514	546720	7546976
515	546842	7546865
516	547092	7546806
517	548106	7546806
518	548108	7546806
519	551544	7546796
520	551545	7546949
521	551688	7546949
522	551688	7546949
523	551796	7546947

Coordinate Number	Easting	Northing
524	553395	7548020
525	553401	7548785
526	553402	7549761
527	553741	7549936
528	553953	7550171
529	553962	7550207
530	553846	7550641
531	553938	7551146
532	553940	7551153
533	554098	7551766
534	554228	7552321
535	554235	7552350
536	554109	7552498
537	553732	7552585
538	553267	7552657
539	552462	7552670
540	552270	7552699
541	552056	7552771
542	551888	7552862
543	551740	7553012
544	551713	7553080
545	551708	7553093
546	551711	7553870
547	551713	7553876
548	551713	7553877
549	551790	7554095
550	551869	7554213
551	551865	7554253
552	551799	7554358
553	551713	7554574
554	551708	7554586
555	551708	7554626