

# Template

## Proposal Content Document

**Table 1:** General proposal content description

|                          |  |
|--------------------------|--|
| <b>Proposal title</b>    | Marri Wind Farm  |
| <b>Proponent name</b>    | Marri WF Pty Ltd   |
| <b>Short description</b> | <p><b>The Proposal involves construction and operation of a renewable energy wind farm project located in the Shire of Dandaragan approximately 110 km north of Perth in Western Australia.</b> This Proposal will have up to 82 turbines, each up to 275 metres (m) maximum height and capacity to generate up to 550 megawatts (MW) of renewable energy. This equates to approximately 10% of the current demand for electricity through the Southwest Interconnected System (SWIS). The Proposal will connect to the SWIS, Western Power’s transmission network, supporting the Clean Energy Link North infrastructure upgrade works. Additionally, a 6,600-megawatt hour (MW/h) battery energy storage system (BESS) and all ancillary infrastructure may also be incorporated into the Proposal, pending the final financial investment decision.</p> <p><b>The Wind Farm will be located on cleared freehold agricultural lands in the Yathroo area.</b></p> |

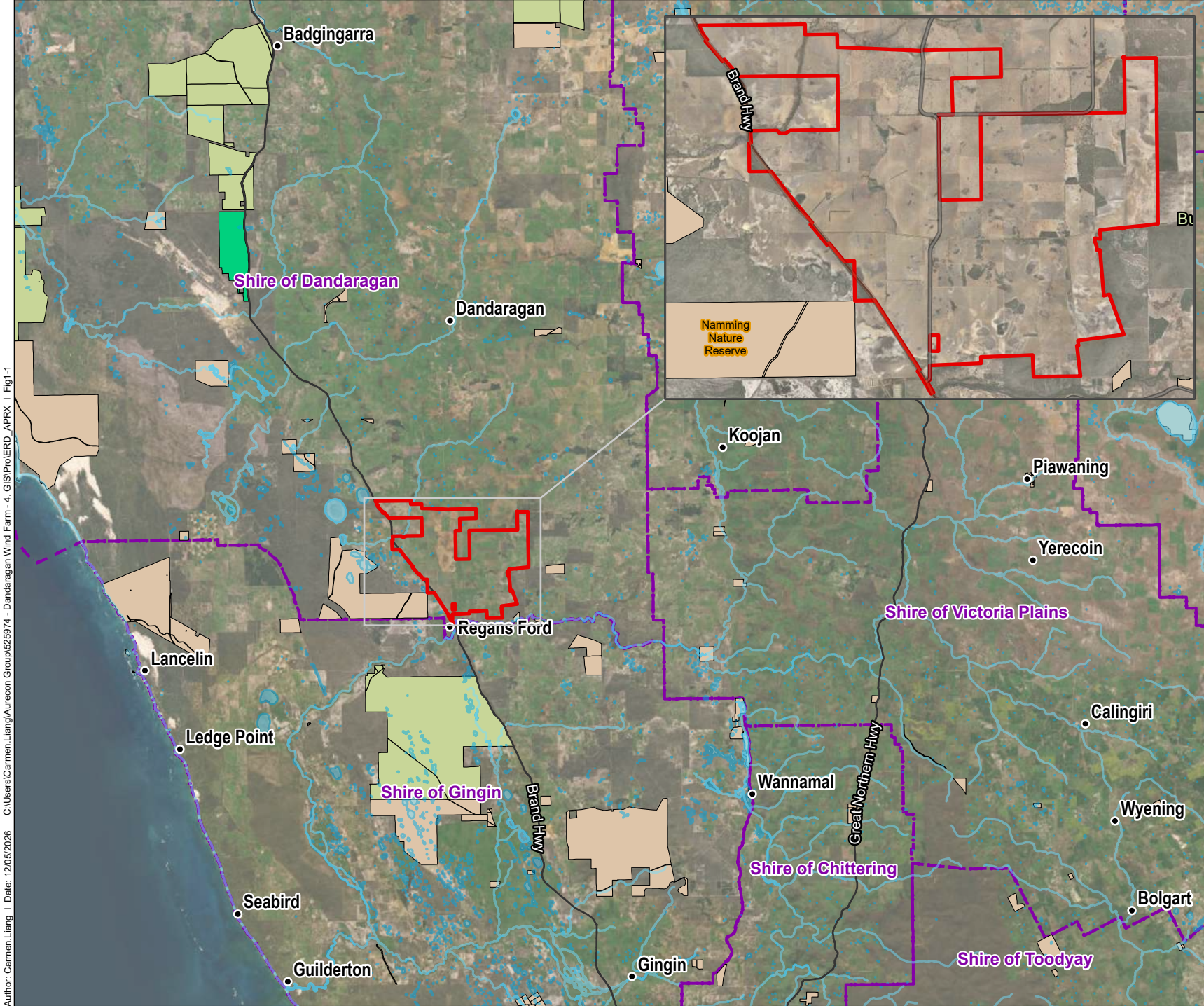
**Table 2:** Proposal content elements

| Proposal elements  | Location and description  | Existing proposal extent, capacity or range                 | Proposed amendment<br>(Content of section 38C, 43A or 45C amendment)  | Combined extent, capacity or range<br>(total of existing approval +proposed change)   |
|--|---|---|---|---|
| <b>Physical Elements</b>   |   |   |   |   |
| Development Envelope includes the Indicative Disturbance Footprint with the following features | Within the Development Envelope<br>Figure 1-1:<br>Proposal Location | Proposed Development Envelope of approximately 12,473.12 ha | The Development Envelope has been amended to account for 0.98 ha of potentially impacted vegetation located outside of the previous Development Envelope.<br><br>The overall area of the Development Envelope has increased by 10.43 ha.<br><br>The proposed Indicative Disturbance Footprint has increased by 0.76 ha. | Proposed Development Envelope of approximately 12,483.55 ha<br><br>Proposed Indicative Disturbance Footprint of approximately 964.37 ha<br><br>The total native vegetation that will be cleared as a result of the Proposal is 7.02 ha which comprises:<br><br>• Up to 2.94 ha of scattered native trees within the Agricultural lands. |
| Turbines   |   | Proposed Construction Footprint of approximately 963.61 ha  |   |   |
| Turbine foundations  |   |   |   |   |
| Turbine hardstands   |   |   |   |   |
| Wind farm substation   |   |   |   |   |
| Connector substation<br>Transmission line to Connector substation                              |   |   |   |   |
| Battery energy storage system (BESS)   |   |   |   |   |
| Operational and maintenance area   |   |   |   |   |

|  |   |  |  |  |
|--|---|--|--|--|
| Permanent meteorological masts<br>Permanent communication tower  |   |  | Reduced clearing of native vegetation by 76.98 ha.<br>Figure 1-2 Amended Proposal  | <ul style="list-style-type: none"> <li>4.08 ha of native vegetation. This includes the 0.168 ha of TEC.</li> </ul>   |
| External site access<br>Internal access roads or tracks<br>Clearing to necessitate site entry  |   |  | Figure 1-3 (and subfigures) Proposed Amendments  |  |
| Supporting utilities (temporary Infrastructure)  |   |  |  |  |
| <b>Construction elements</b>   | <b>Location and description</b>               | <b>Existing proposal extent, capacity or range</b>   | <b>Proposed amendment</b><br>(Content of section 38C, 43A or 45C amendment)  | <b>Combined extent, capacity or range</b><br>(total of existing approval +proposed change)   |
| Temporary construction compound, laydown areas and hardstands, biosecurity laydown and site security areas.<br>Borrow pits/quarries and stockpiles<br>Temporary workers accommodation<br>Water supply and temporary turkey's nests | Within the Development Envelope<br>Figure 1-3 | Proposed Construction Footprint of approximately 963.61 ha<br>Up to 450 equivalent persons capacity over approximately 10 ha   | Adjustment to the Indicative Disturbance Footprint is increased by 0.76 ha based on a more detailed analysis of the construction area. | Indicative Disturbance Footprint of approximately 964.37 ha  |
| Concrete batching plants   | Within the Development Envelope<br>Figure 1-3 | Concrete for the foundations will be mixed at concrete batching plants which are proposed to be part of the laydown areas within the Proposed Development Envelope. Concrete batching material may be sourced offsite and utilise onsite borrow pit material with up to 6 locations. | NO CHANGE  | Concrete for the foundations will be mixed at concrete batching plants which are proposed to be part of the laydown areas within the Proposed Development Envelope. Concrete batching material may be sourced offsite and utilise onsite borrow pit material with up to 6 locations. |

|  |  |  |   |   |
|--|--|--|---|---|
| Construction water supply  | Within the Development Envelope<br>Figure 1-3  | Approximately 750 ML/yr from existing groundwater bores, up to 10 turkey nests with capacity up to 15,000 m3 within the Proposed Development Envelope. | Water abstraction for construction will not exceed current annual allocation of 672,000 kL<br>Anticipated water use over the three years for construction is 297ML or 0.03ML/day. | Water abstraction for construction will not exceed current annual allocation of 672,000 kL<br>Anticipated water use over the three years for construction is 297ML or 0.03ML/day. |
| <b>Operational elements</b>  | <b>Location and description</b>  | <b>Existing proposal extent, capacity or range</b>   | <b>Proposed amendment</b><br>(Content of section 38C, 43A or 45C amendment)   | <b>Combined extent, capacity or range</b><br>(total of existing approval +proposed change)  |
| Wind energy production.  | Within the Development Envelope  | Up to 82 WTGs with total wind capacity of up to 550MW  | NO CHANGE   | Up to 82 WTGs with total wind capacity of up to 550MW   |
| Battery Energy Storage   |  | 6,600 MW   | NO CHANGE   | 6,600 MW  |
| Transmission line and connection substation and wind farm substation.                    |  | Approximately 70.9 ha  | NO CHANGE   | Approximately 70.9 ha   |
| Operational maintenance building/s and all permanent roads, structures and fuel storage. |  | Approximately 462.96 ha permanent infrastructure of which approximately 275.69 ha relates to these areas.  | NO CHANGE   | Approximately 275.69 ha for permanent supporting infrastructure   |
| <b>Proposal Elements with Greenhouse Gas Emissions</b>                                   |  |  |   |   |
| <b>Construction elements</b>   | <b>Existing proposal extent, capacity or range</b>   |  | <b>Proposed amendment</b><br>(Content of section 38C, 43A or 45C amendment)   | <b>Combined extent, capacity or range</b><br>(total of existing approval +proposed change)  |
| Scope 1  | 4,200 t CO <sub>2</sub> -e per year (or 12,500 t CO <sub>2</sub> -e over a 3-year construction phase).   |  | NO CHANGE   | 4,200 t CO <sub>2</sub> -e per year (or 12,500 t CO <sub>2</sub> -e over a 3-year construction phase).  |
| Scope 2  | Not applicable   |  | NO CHANGE   | Not applicable  |
| Scope 3  | 66,666 t CO <sub>2</sub> -e per year (or 200,000 t CO <sub>2</sub> -e over 3 years construction period). |  | NO CHANGE   | 66,666 t CO <sub>2</sub> -e per year (or 200,000 t CO <sub>2</sub> -e over 3 years construction period).  |
| <b>Operational elements</b>  | <b>Existing proposal extent, capacity or range</b>   |  | <b>Proposed amendment</b><br>(Content of section 38C, 43A or 45C amendment)   | <b>Combined extent, capacity or range</b><br>(total of existing approval +proposed change)  |
| Scope 1  | 750 t CO <sub>2</sub> -e/annum.  |  | NO CHANGE   | 750 t CO <sub>2</sub> -e/annum.   |

|   |                                   |   |           |   |
|---|-----------------------------------|---|-----------|---|
| Scope 2   | 1,500 t CO <sub>2</sub> -e/annum. |   | NO CHANGE | 1,500 t CO <sub>2</sub> -e/annum.   |
| Scope 3   | 650 t CO <sub>2</sub> -e/annum.   |   | NO CHANGE | 650 t CO <sub>2</sub> -e/annum.   |
| <b>Rehabilitation</b>   |                                   |   |           |   |
| <p>At the end of the construction and commissioning phases, all identified temporary construction areas will be returned to pre-construction land use activities where practical and as agreed with landowners. If due to the proximity of capital infrastructure, any area unable to be returned to agricultural production will be rehabilitated following decommissioning.</p> <p>Following eventual decommissioning all previous operational areas, and any amendments which may occur during the operational life of the Proposal, are to be rehabilitated to support the continuance of the previous land use as agreed with landowners.</p>  |                                   |   |           |   |
| <b>Commissioning</b>  |                                   |   |           |   |
| There are no environmental impacts specific to the commissioning phase.   |                                   |   | NO CHANGE |   |
| <b>Decommissioning</b>  |                                   |   |           |   |
| <p>At the end of the initial land lease term (approximately 2059), the Proponent will perform a feasibility study to decide whether to continue use and/or upgrades of the capital infrastructure and technologies or to decommission and rehabilitate.</p> <p>Decommissioning would incorporate the following:</p> <ul style="list-style-type: none"> <li>■ Systematic de-energisation of all infrastructure, plant and equipment</li> <li>■ Dismantling, repurposing, recycling or complete removal for disposal of all infrastructure, plant and equipment or componentry</li> <li>■ Rehabilitation activities implemented across the decommissioned operation footprint and any additional disturbance during decommissioning</li> <li>■ Recycling of recyclable materials (including batteries, precious and base metals, glass etc.)</li> </ul> <p>During the decommissioning phase some constructed elements may be subject to the landowner's discretion and remain post rehabilitation assessment (such as upgraded or sealed roads and tracks). All decommissioning activities will be developed in consultation with relevant stakeholders, for Post-Development Land Use.</p> |                                   |   |           |   |
| <b>Other elements</b>   |                                   |   |           |   |
| Initial Proposal timeline   | Maximum life                      | The proposed technology is expected to have an economic life of greater than 35 years           | NO CHANGE | The proposed technology is expected to have an economic life of greater than 35 years           |
|   | Construction phase                | Up to 3 years (2027 to 2030)  | NO CHANGE | Up to 3 years (2027 to 2030)  |
|   | Operational phase                 | > 35 years  | NO CHANGE | > 35 years  |
|   | Decommissioning phase             | Approximately 1 year<br>To be determined no later than 2 years prior to final power production. | NO CHANGE | Approximately 1 year<br>To be determined no later than 2 years prior to final power production. |

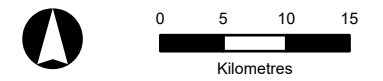


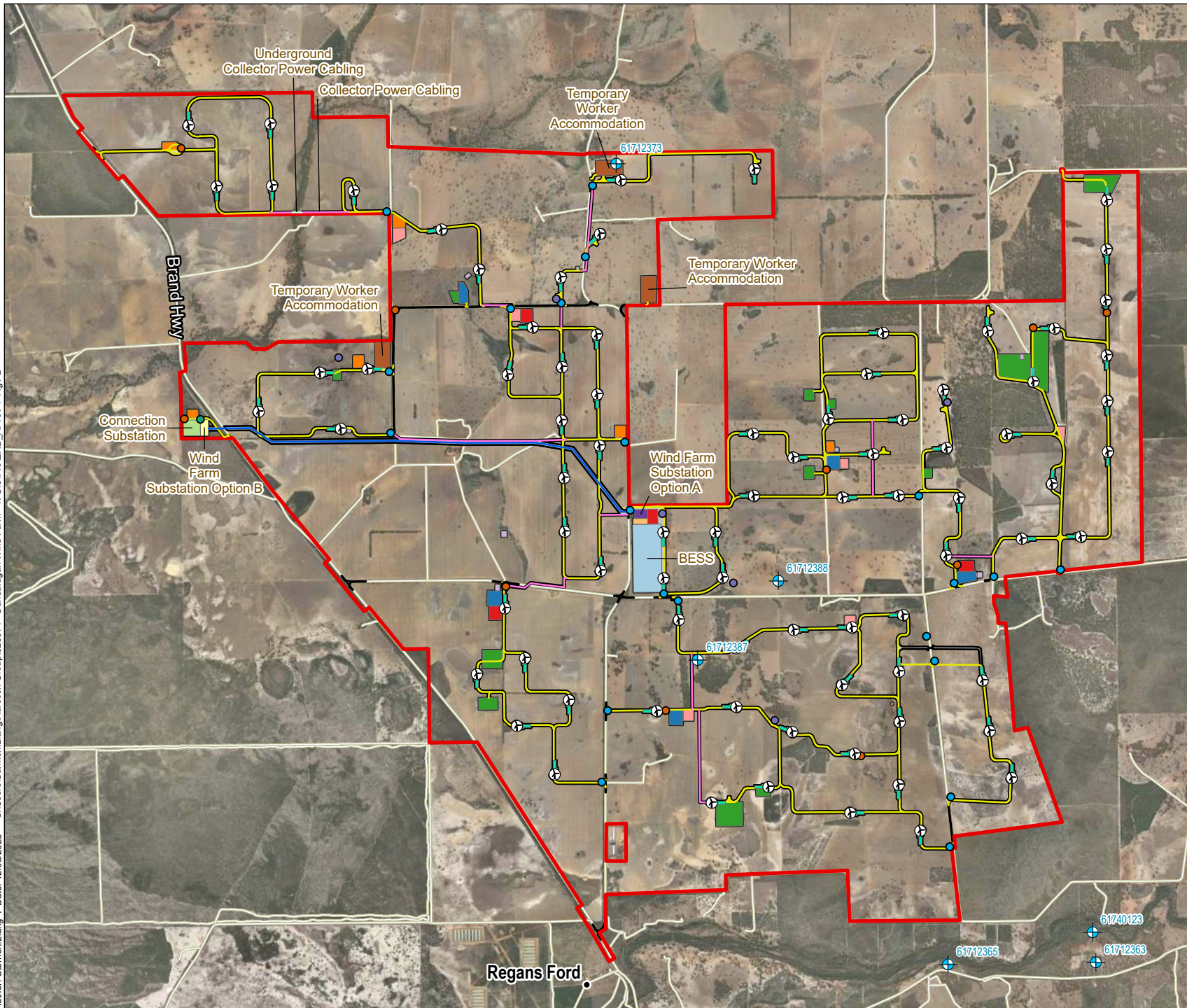
- Watercourses (DWER-031)
  - Waterbodies (LGATE-016)
  - LGA Boundaries (LGATE-233)
  - Development Envelope
- DBCA - Legislated Lands and Waters (DBCA-011)**
- Conservation Park
  - National Park
  - Nature Reserve

Source: ESRI (2023), Alinta, data.wa.gov.au, SLIP / Landgate, DBCA



Author: Carmen Liang | Date: 12/05/2026 | C:\Users\Carmen.Liang\Aurecon Group\525974 - Dandaragan Wind Farm - 4. GIS\ProJERD APRX | Fig1-1



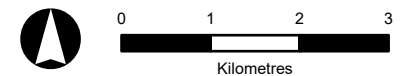


- Amended Development Envelope
- Indicative Disturbance Footprint
- Hydrological Bores**
- + Water Supply
- Permanent Infrastructures :**
- ⊕ Turbine Layout
- Communication Towers
- Firefighting Water Tanks
- Meteorological Masts
- Transmission Line
- Collector Power Cabling
- Underground Collector Power Cabling
- Public Local Roads
- Access Tracks
- Battery Energy Storage System (BESS)
- Connection Substation Option
- Operations & Maintenance Facilities
- Wind Farm Substation Option A
- Wind Farm Substation Option B
- Turbine Foundations
- Temporary Infrastructures :**
- Site security including biosecurity
- Concrete Batching Plants
- Borrow Pits
- Laydown Areas
- Main Compounds
- Satellite Compound Areas
- Turkey's Nest Dams
- Temporary Worker Accommodation

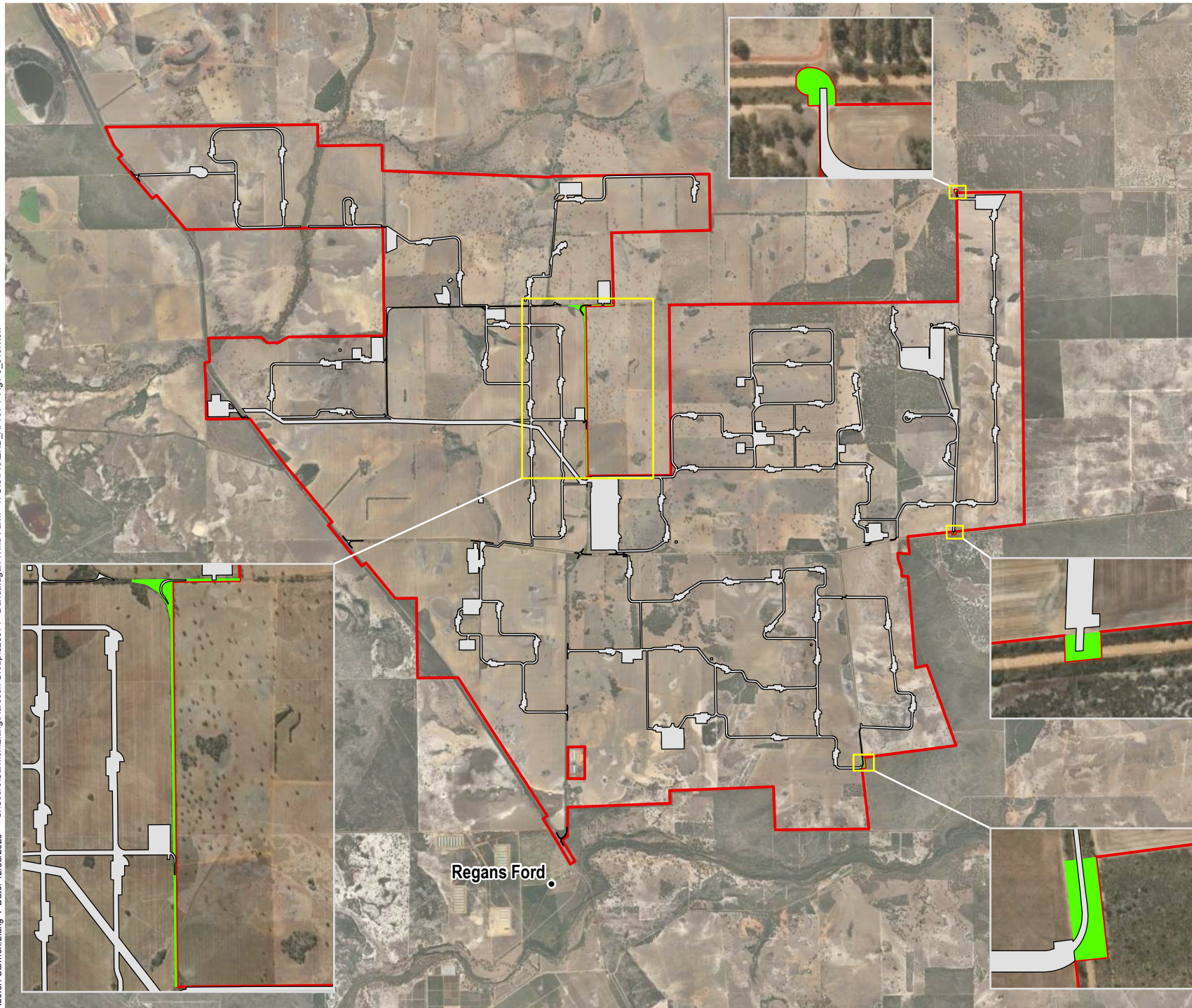
Source: ESRI (2023), Alinta, data.wa.gov.au, SLIP / Landgate, Western Power



Author: Carmen Liang | Date: 12/05/2026 | C:\Users\Carmen.Liang\Aurecon Group\525974 - Dandaragan Wind Farm - 4. GIS\ProJERD\_APRX | Fig1-2



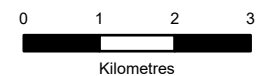
- Indicative Disturbance Footprint
- Amended Development Envelope
- Additional Area



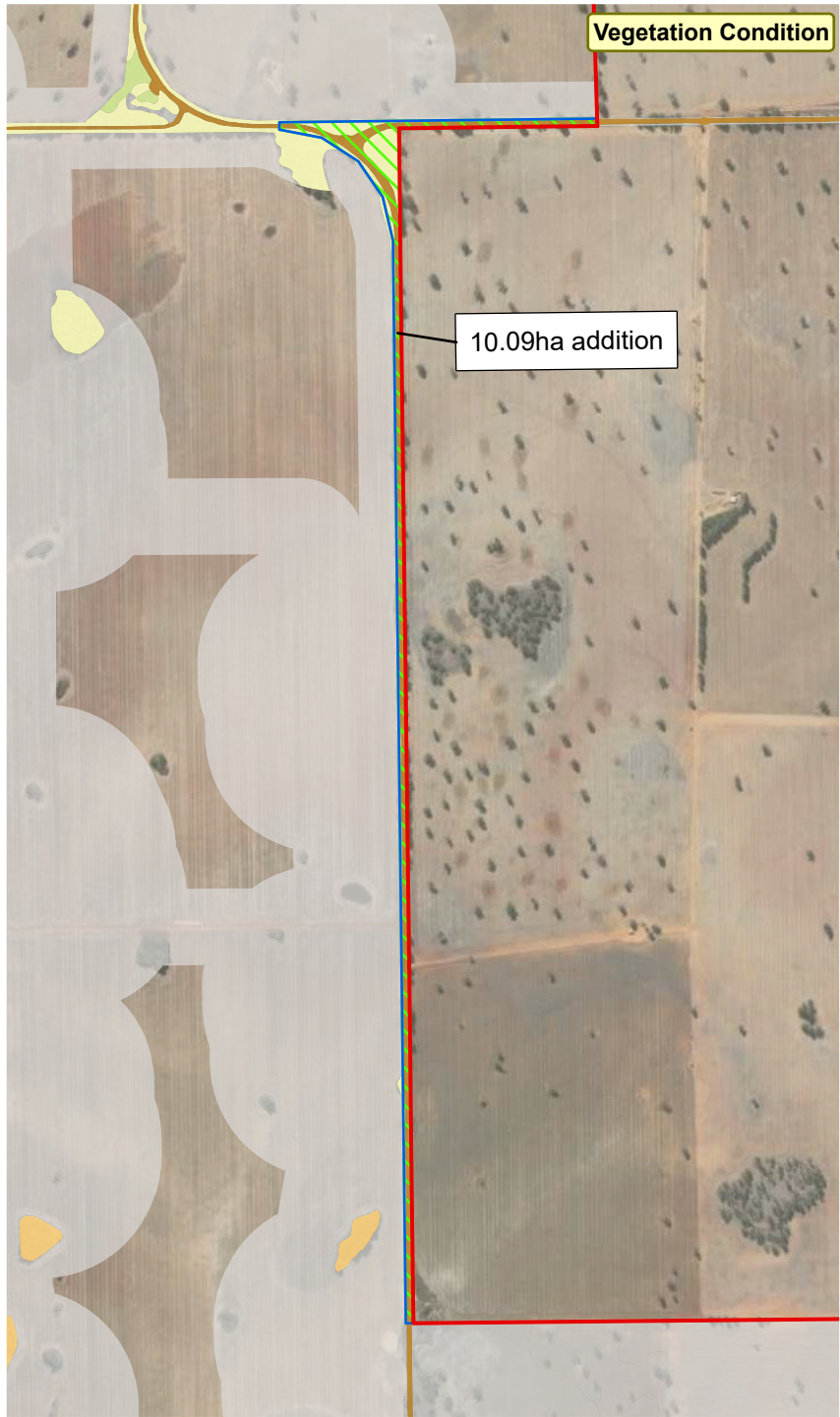
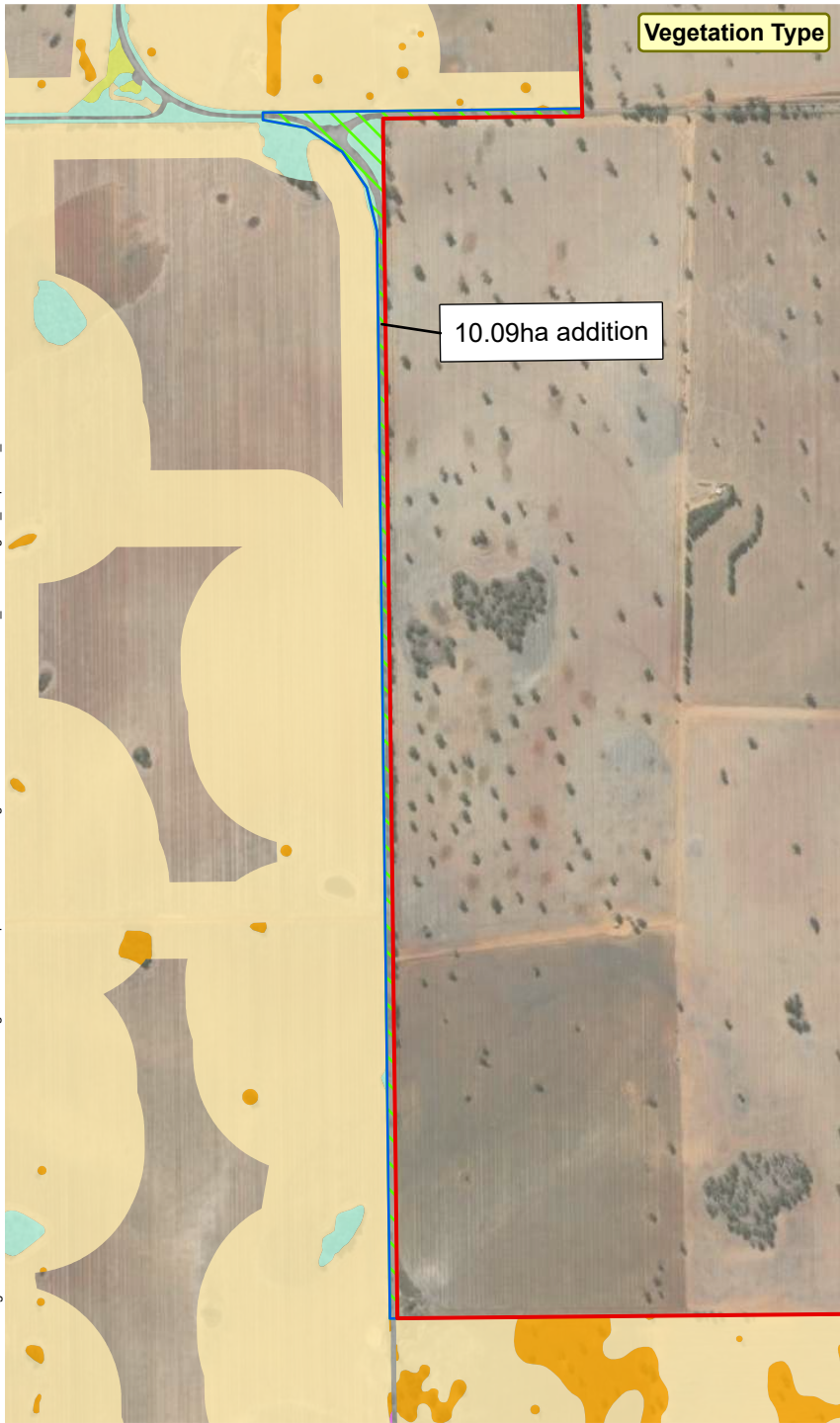
Source: ESRI (2023), Alinta, data.wa.gov.au, SLIP / Landgate, Western Power



Author: Carmen.Liang | Date: 12/05/2028 | C:\Users\Carmen.Liang\Aurecon Group\525974 - Dandaragan Wind Farm - 4. GIS\ProJRD\_APRX | Fig1-3\_overview



Author: Carmen.Liang | Date: 12/05/2028 | C:\Users\Carmen.Liang\Aurecon Group\525974 - Dandaragan Wind Farm - 4. GIS\Pro\ERD\_APRX | Fig1-3\_mapseries\_left



- Original Development Envelope
- Amended Development Envelope
- Changes in Development Envelope

**Vegetation Type**

- Ag
- Ag(Cc)
- BaXpHcMp
- Cc.JsHh
- EtJsCs
- Cleared ; N/A

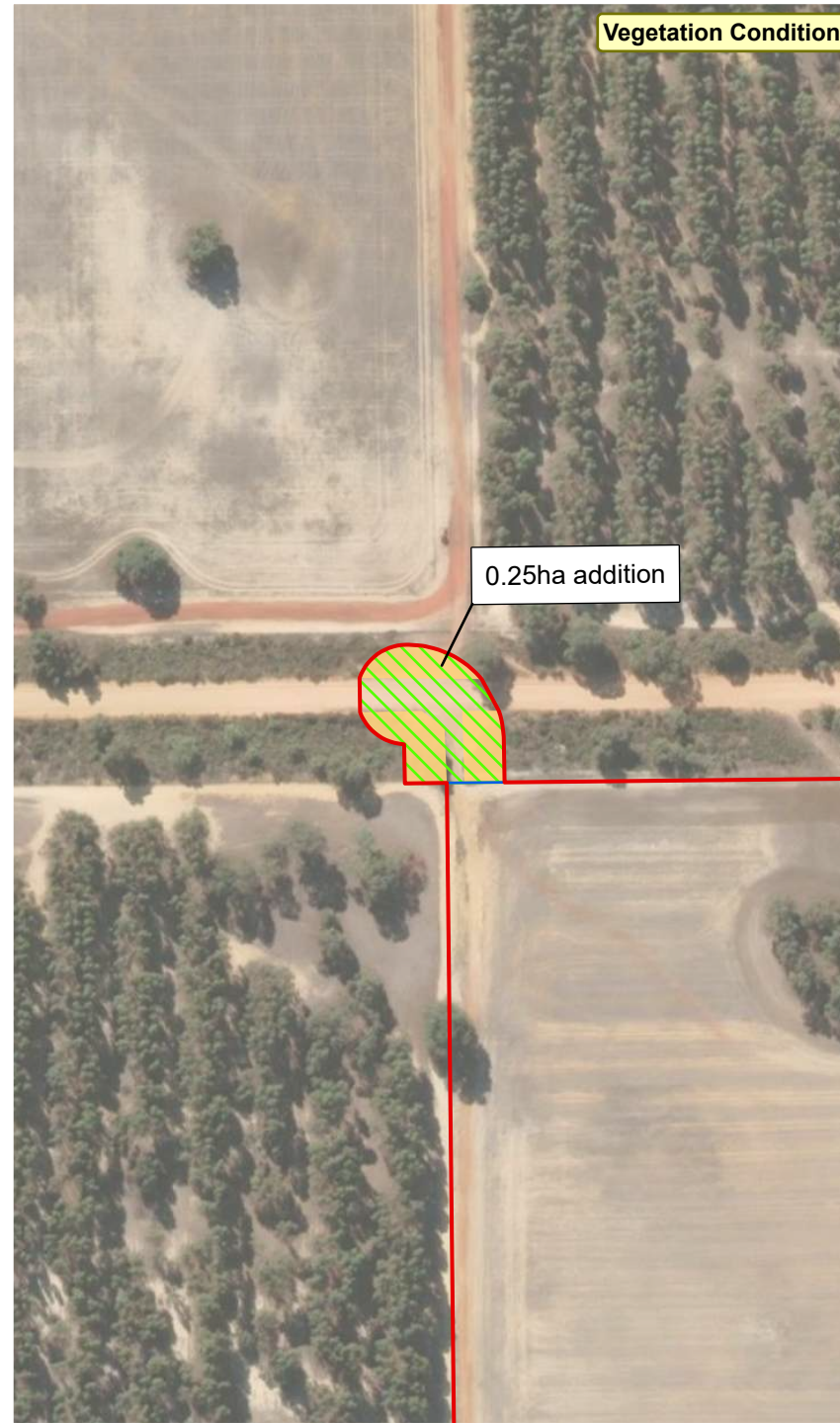
**Vegetation Condition**

- Very Good
- Good
- Degraded
- Completely Degraded
- N/A

Source: ESRI (2023), Alinta, data.wa.gov.au, SLIP / Landgate, Western Power

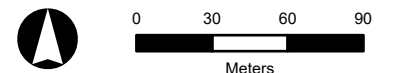


Author: Carmen.Liang | Date: 12/05/2026 | C:\Users\Carmen.Liang\Aurecon Group\525974 - Dandaragan Wind Farm - 4. GIS\ProJRD\_APRX | Fig1-3\_mapseries\_left

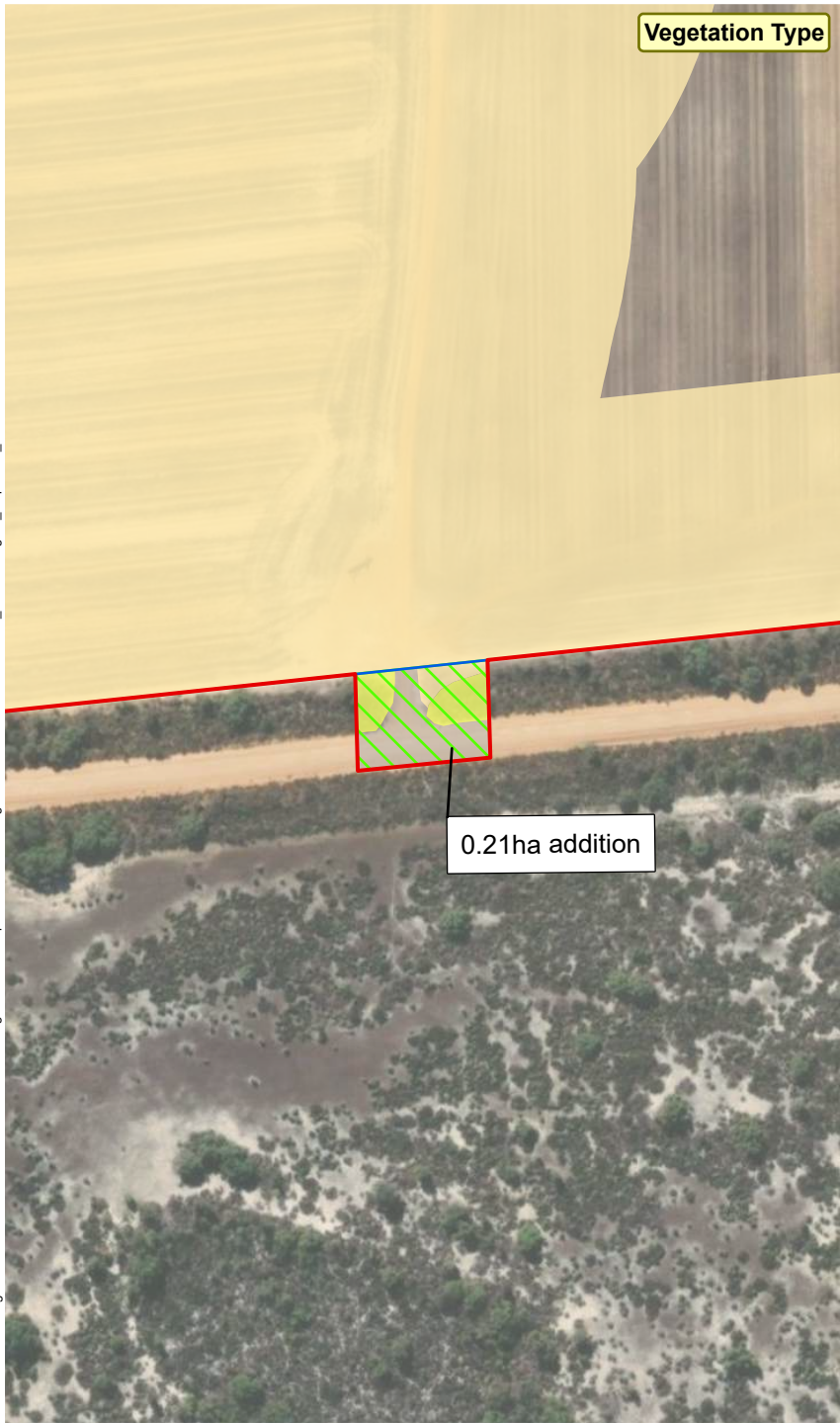


- Original Development Envelope
- Amended Development Envelope
- Changes in Development Envelope
- Vegetation Type**
- EtJsCs
- Vegetation Condition**
- Degraded

Source: ESRI (2023), Alinta, data.wa.gov.au, SLIP / Landgate, Western Power



Author: Carmen.Liang | Date: 12/05/2026 | C:\Users\Carmen.Liang\Aurecon Group\525974 - Dandaragan Wind Farm - 4. GIS\ProJRD\_APRX | Fig1-3\_mapseries\_left



- Original Development Envelope
- Amended Development Envelope
- Changes in Development Envelope

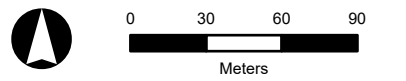
**Vegetation Type**

- Ag
- BaXpHcMp
- Cleared ; N/A

**Vegetation Condition**

- Excellent
- Completely Degraded
- N/A

Source: ESRI (2023), Alinta, data.wa.gov.au, SLIP / Landgate, Western Power





**Legend**

- Original Development Envelope (Blue outline)
- Amended Development Envelope (Red outline)
- Changes in Development Envelope (Green hatched area)

**Vegetation Type**

- Ag (Yellow)
- Ag(Cc) (Orange)
- BaXpHcMp (Light Green)
- EtJsCs (Purple)
- Cleared ; N/A (Grey)

**Vegetation Condition**

- Very Good (Light Green)
- Completely Degraded (Grey)
- N/A (Brown)

Source: ESRI (2023), Alinta, data.wa.gov.au, SLIP / Landgate, Western Power

Lancelin  
Perth

0 30 60 90  
Meters