

# DAFWA Proposed Barrier Fence Survey Sections

## Erosion Hotspot Elevation Survey Report



## Methodology

This survey was completed with a DGNSS receiver using the Trimble RTX CenterPoint correction service. This achieves an accuracy of 4cm horizontal and 9cm vertical. Data was logged with Agleader SMS Mobile data logger. At intervals of 1 second and a maximum survey speed of approx. 25kmh.

## Elevation Survey Report

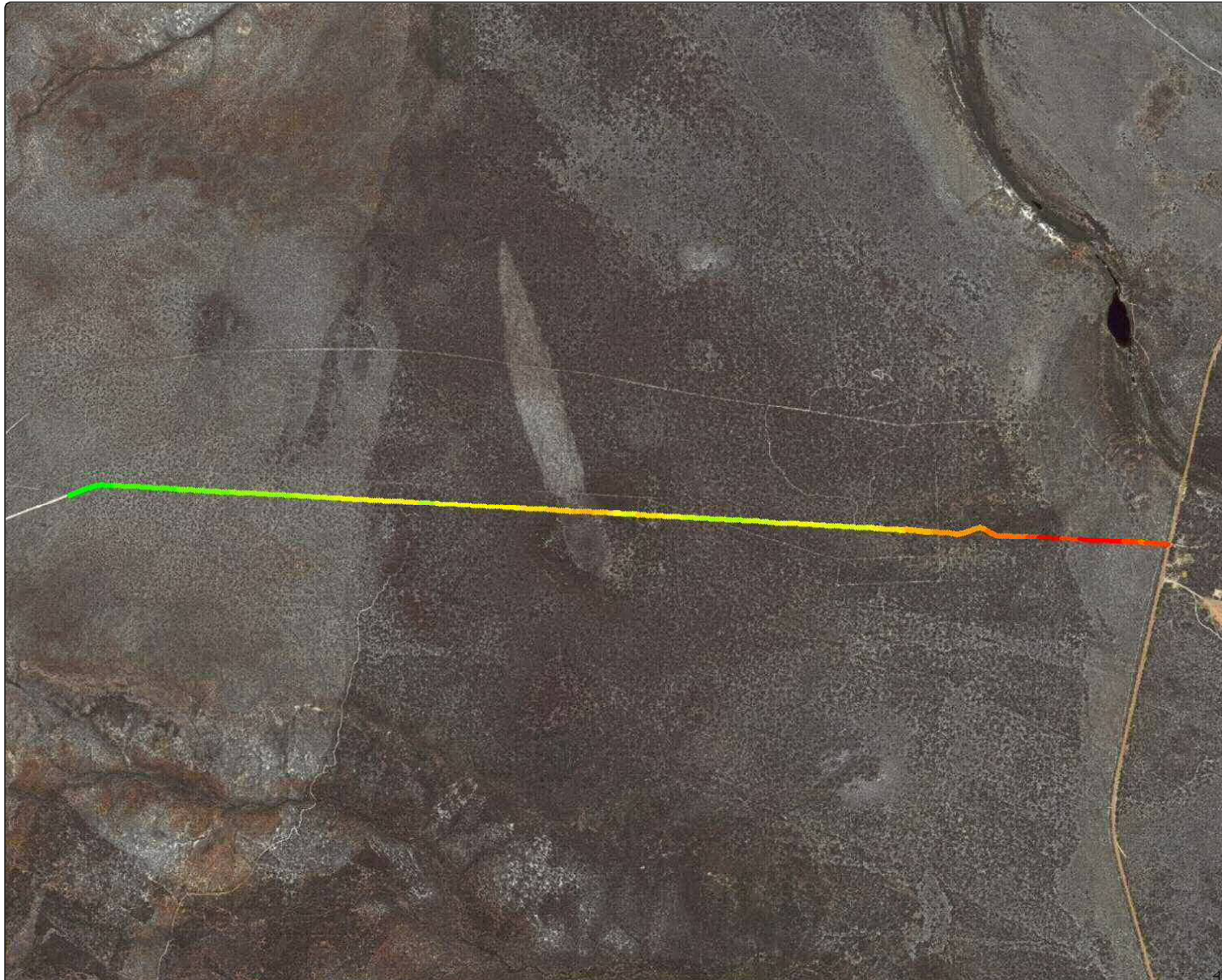
<b>Grower :</b>	<b>DAFWA</b>
<b>Farm :</b>	<b>Dog Fence</b>

<b>Field:</b>	W0
<b>Year:</b>	2015
<b>Operation:</b>	Site Verification
<b>Product:</b>	NO Product
<b>Operational Instance:</b>	Elevation log

<b>Dataset</b>	<b>Count</b>	<b>Start Date</b>	<b>Length m</b>	<b>Minimum Elevation m</b>	<b>Maximum Elevation m</b>
17/06/2015 9:52 AM	734	17/06/2015	4,304.8	122.90	152.69
<b>Totals</b>	<b>734</b>	<b>17/06/2015</b>	<b>4,304.8</b>	<b>122.90</b>	<b>152.69</b>
		Minimum		Minimum	Maximum

*Data Altered/Created through Analysis*

# Site Verification 2015 - W0

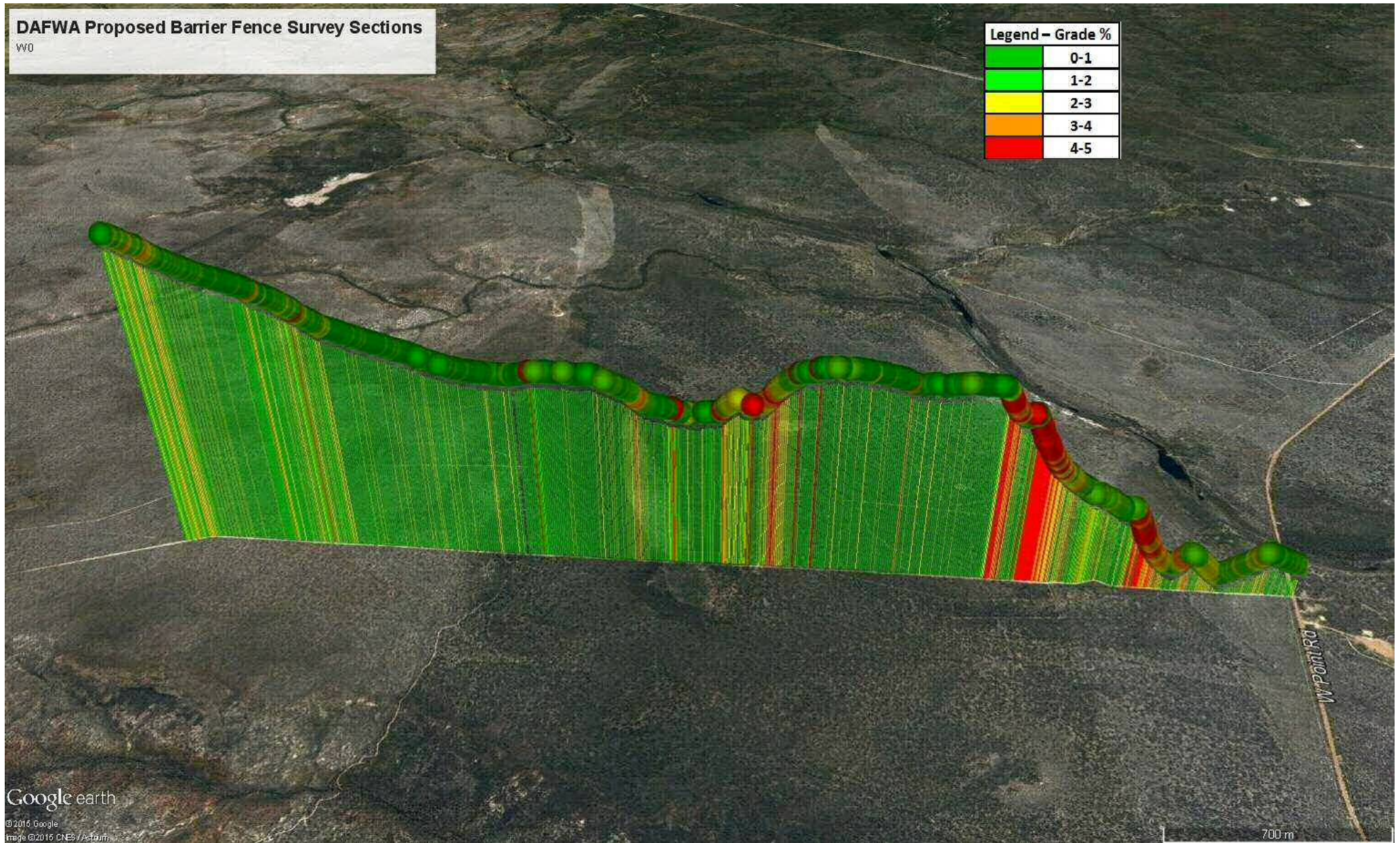


Elevation (m)	
149.85 - 152.69	(0.018 ha)
147.83 - 149.85	(0.025 ha)
145.12 - 147.83	(0.021 ha)
142.96 - 145.12	(0.025 ha)
142.33 - 142.96	(0.029 ha)
141.76 - 142.33	(0.028 ha)
141.36 - 141.76	(0.027 ha)
141.08 - 141.36	(0.028 ha)
140.81 - 141.08	(0.023 ha)
140.46 - 140.81	(0.026 ha)
139.44 - 140.46	(0.026 ha)
138.04 - 139.44	(0.025 ha)
137.39 - 138.04	(0.020 ha)
133.19 - 137.39	(0.017 ha)
129.92 - 133.19	(0.021 ha)
125.52 - 129.92	(0.019 ha)
124.35 - 125.52	(0.026 ha)
122.90 - 124.35	(0.027 ha)

# DAFWA Proposed Barrier Fence Survey Sections

W0

Legend - Grade %	
Green	0-1
Light Green	1-2
Yellow	2-3
Orange	3-4
Red	4-5



# Elevation Survey Report

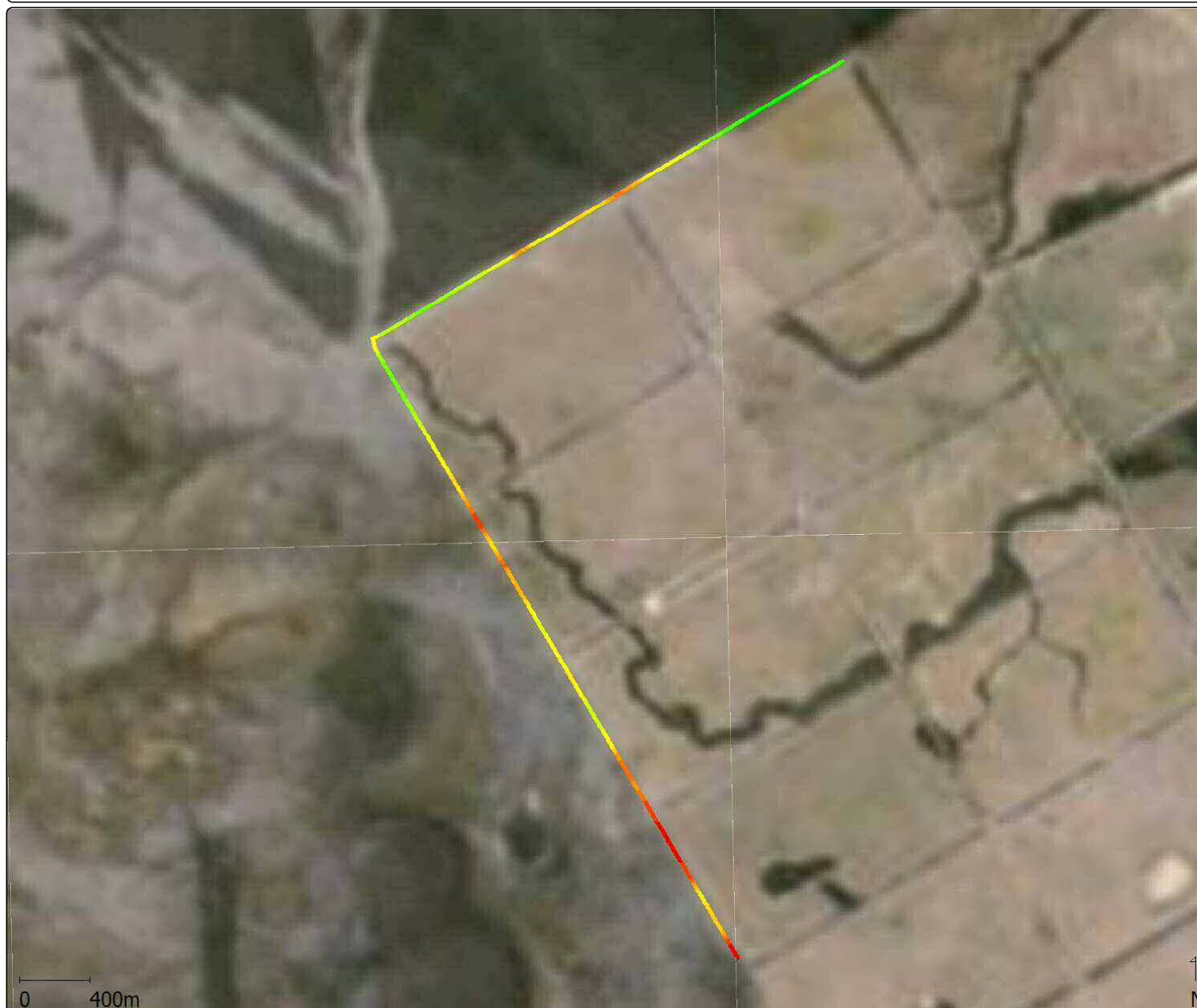
**Grower :** DAFWA  
**Farm :** Dog Fence

**Field:** W1  
**Year:** 2015  
**Operation:** Site Verification  
**Product:** NO Product  
**Operational Instance:** Elevation log

Dataset	Count	Start Date	Length m	Minimum Elevation m	Maximum Elevation m
17/06/2015 10:31 AM	967	17/06/2015	7,143.1	236.17	247.38
<b>Totals</b>	<b>967</b>	<b>17/06/2015</b>	<b>7,143.1</b>	<b>236.17</b>	<b>247.38</b>
		Minimum		Minimum	Maximum

*Data Altered/Created through Analysis*

# Site Verification 2015 - W1



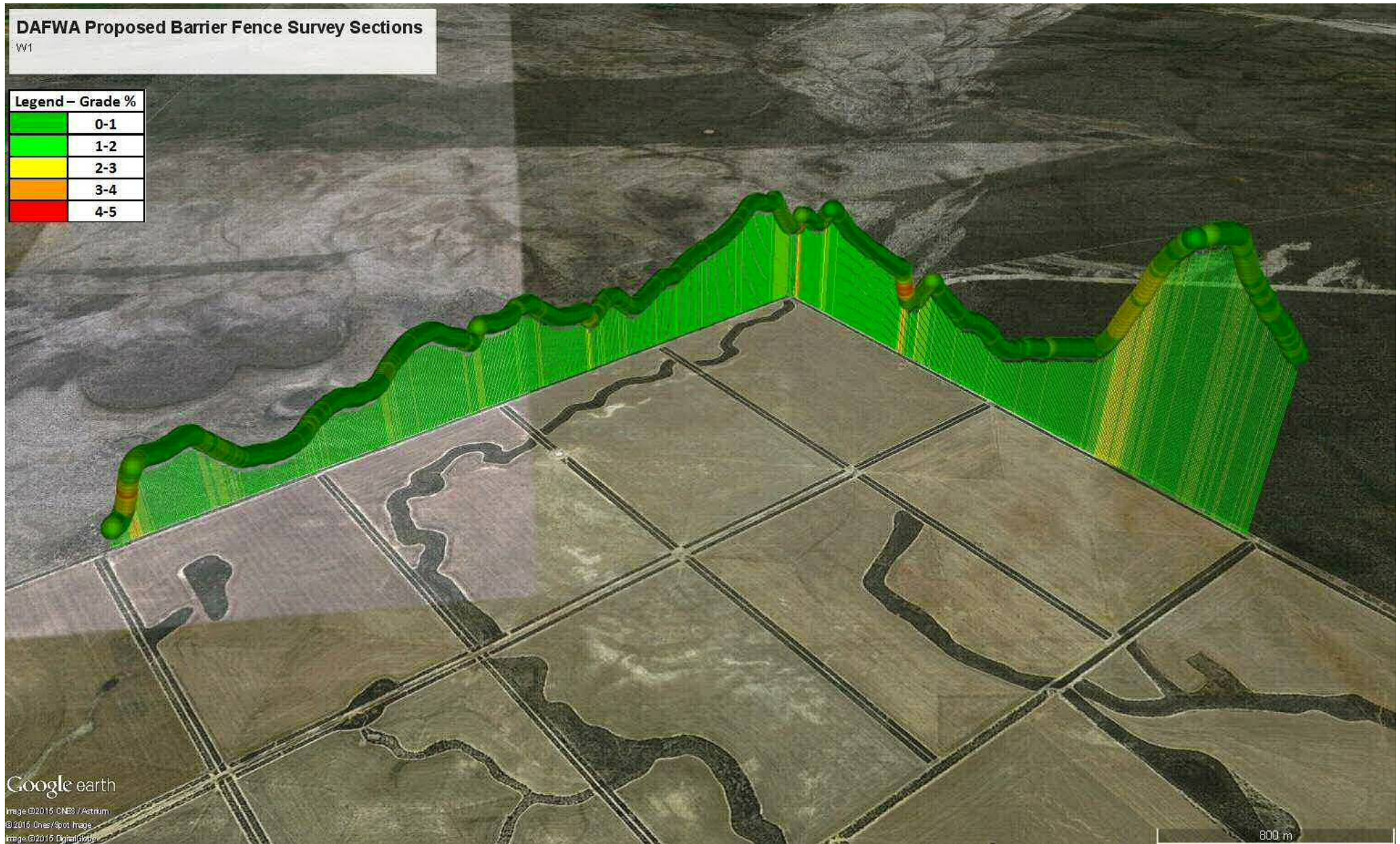
Elevation (m)	
245.90 - 247.38	(0.038 ha)
242.70 - 245.90	(0.041 ha)
241.20 - 242.70	(0.040 ha)
240.52 - 241.20	(0.041 ha)
240.25 - 240.52	(0.040 ha)
240.08 - 240.25	(0.039 ha)
239.96 - 240.08	(0.040 ha)
239.72 - 239.96	(0.039 ha)
239.58 - 239.72	(0.039 ha)
239.29 - 239.58	(0.039 ha)
239.05 - 239.29	(0.042 ha)
238.93 - 239.05	(0.039 ha)
238.81 - 238.93	(0.040 ha)
238.62 - 238.81	(0.039 ha)
238.39 - 238.62	(0.041 ha)
238.16 - 238.39	(0.041 ha)
237.25 - 238.16	(0.039 ha)
236.17 - 237.25	(0.037 ha)

# DAFWA Proposed Barrier Fence Survey Sections

W1

## Legend - Grade %

Green	0-1
Bright Green	1-2
Yellow	2-3
Orange	3-4
Red	4-5



# Elevation Survey Report

**Grower :** DAFWA  
**Farm :** Dog Fence

**Field:** W2  
**Year:** 2015  
**Operation:** Site Verification  
**Product:** NO Product  
**Operational Instance:** Elevation log

Dataset	Count	Start Date	Length m	Minimum Elevation m	Maximum Elevation m
17/06/2015 11:16 AM	1180	17/06/2015	8,404.6	201.87	251.63
<b>Totals</b>	<b>1180</b>	<b>17/06/2015</b>	<b>8,404.6</b>	<b>201.87</b>	<b>251.63</b>
		Minimum		Minimum	Maximum

*Data Altered/Created through Analysis*



# Site Verification 2015 - W2

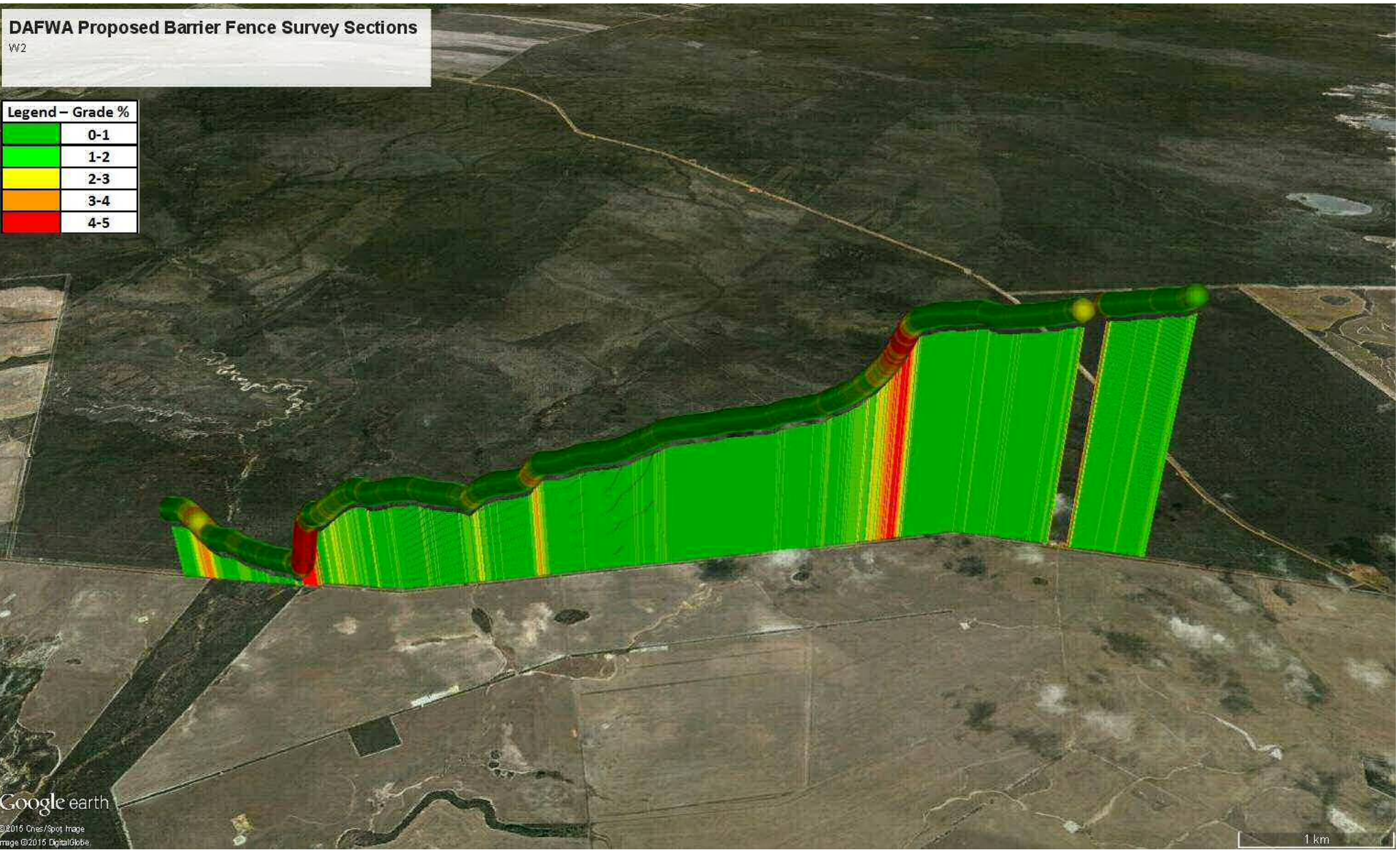


Elevation (m)	
249.17 - 251.63	(0.047 ha)
245.80 - 249.17	(0.041 ha)
244.74 - 245.80	(0.048 ha)
244.33 - 244.74	(0.049 ha)
233.64 - 244.33	(0.049 ha)
228.54 - 233.64	(0.048 ha)
227.13 - 228.54	(0.049 ha)
226.65 - 227.13	(0.046 ha)
225.04 - 226.65	(0.050 ha)
222.73 - 225.04	(0.053 ha)
219.13 - 222.73	(0.051 ha)
218.55 - 219.13	(0.051 ha)
217.91 - 218.55	(0.050 ha)
216.23 - 217.91	(0.051 ha)
212.25 - 216.23	(0.036 ha)
207.25 - 212.25	(0.038 ha)
203.98 - 207.25	(0.042 ha)
201.87 - 203.98	(0.043 ha)

# DAFWA Proposed Barrier Fence Survey Sections

W2

Legend - Grade %	
Green	0-1
Light Green	1-2
Yellow	2-3
Orange	3-4
Red	4-5



Google earth  
©2015 Cnes/Spot Image  
Image ©2015 DigitalGlobe

# Elevation Survey Report

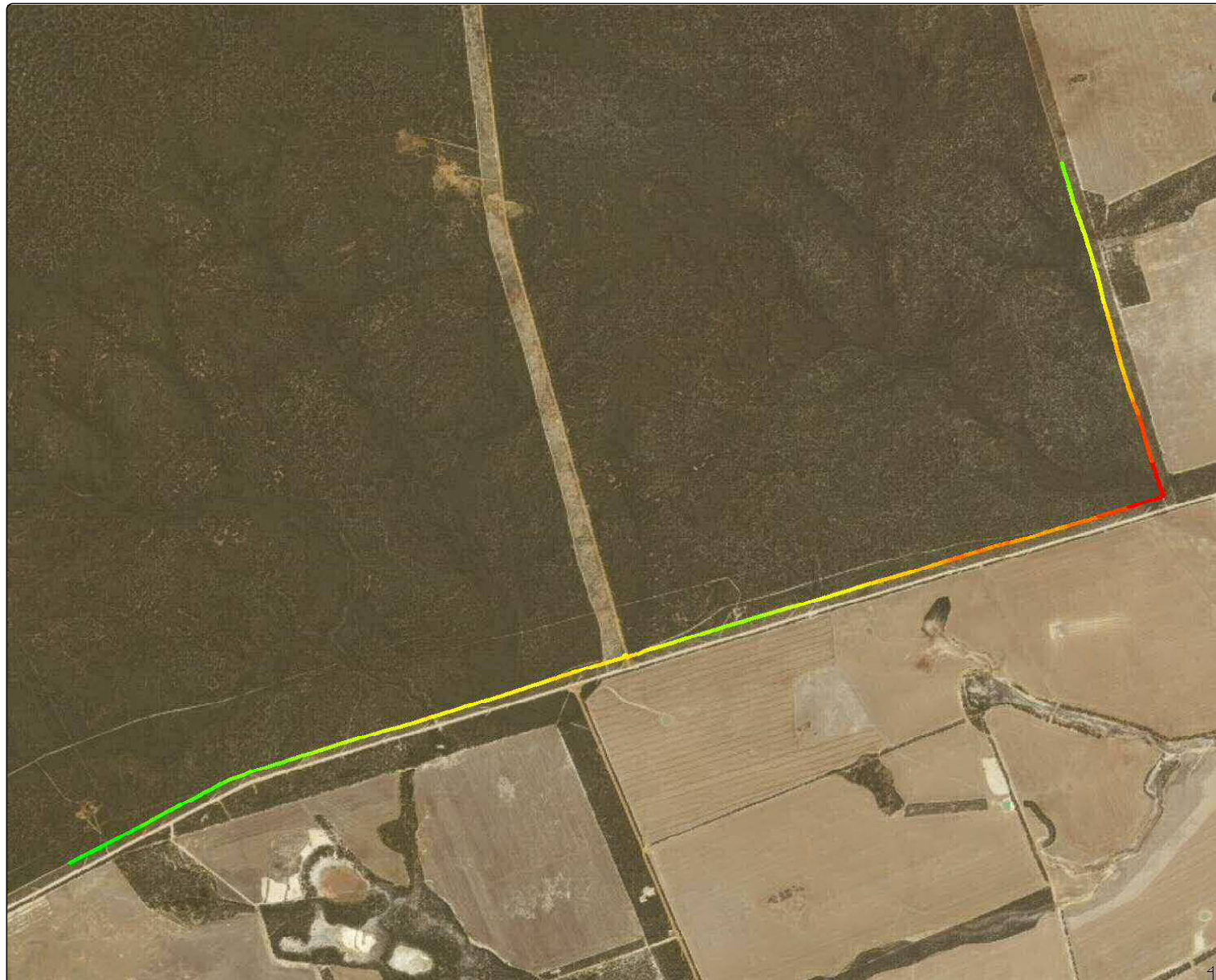
**Grower :** DAFWA  
**Farm :** Dog Fence

**Field:** W3  
**Year:** 2015  
**Operation:** Site Verification  
**Product:** NO Product  
**Operational Instance:** Elevation log

Dataset	Count	Start Date	Length m	Minimum Elevation m	Maximum Elevation m
17/06/2015 2:14 PM	1336	17/06/2015	8,369.5	213.64	249.57
<b>Totals</b>	<b>1336</b>	<b>17/06/2015</b>	<b>8,369.5</b>	<b>213.64</b>	<b>249.57</b>
		Minimum		Minimum	Maximum

*Data Altered/Created through Analysis*

# Site Verification 2015 - W3



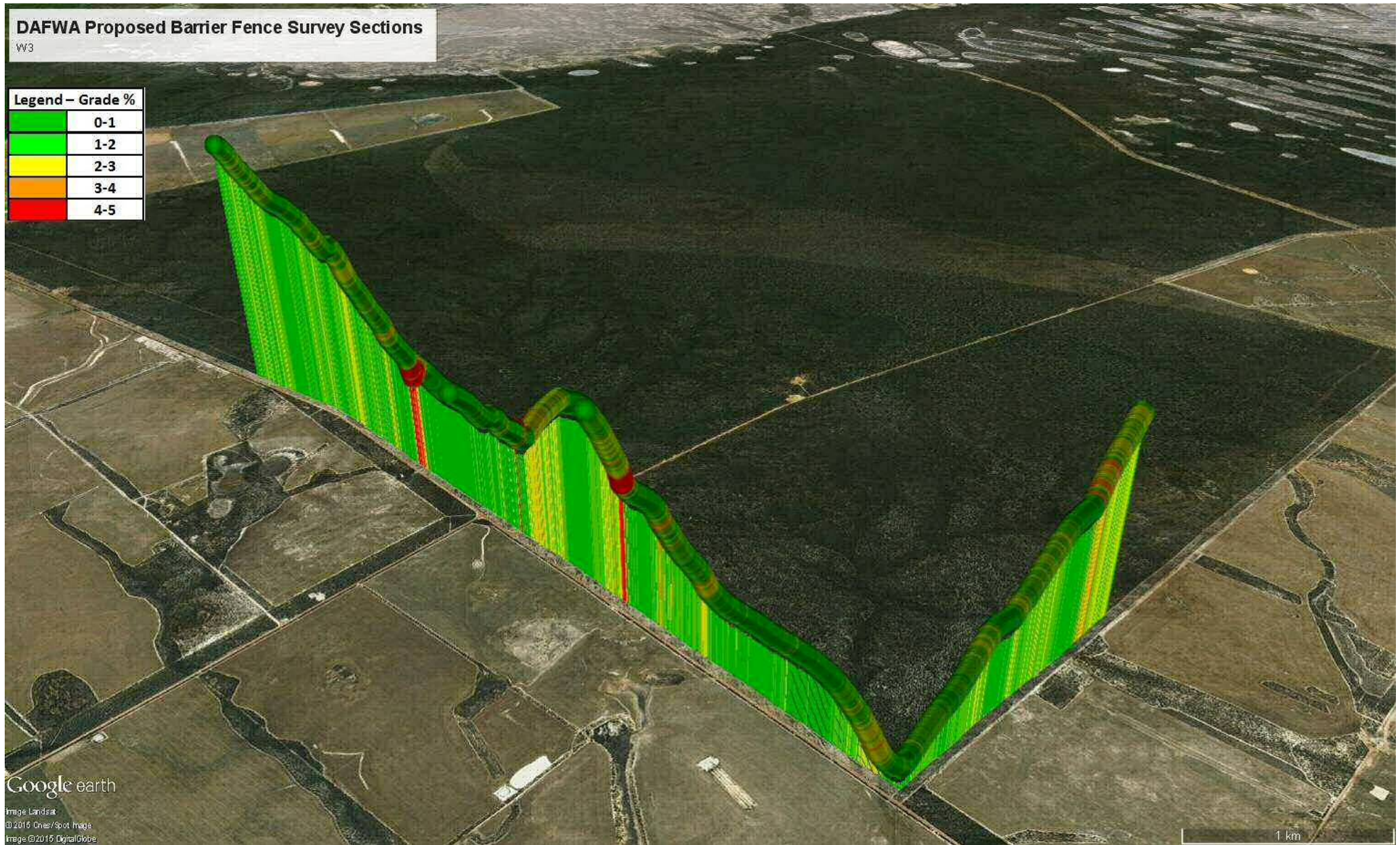
Elevation (m)	
243.96 - 249.57	(0.044 ha)
239.34 - 243.96	(0.052 ha)
236.05 - 239.34	(0.051 ha)
234.29 - 236.05	(0.050 ha)
232.22 - 234.29	(0.050 ha)
230.00 - 232.22	(0.048 ha)
228.65 - 230.00	(0.050 ha)
227.46 - 228.65	(0.048 ha)
226.31 - 227.46	(0.048 ha)
226.00 - 226.31	(0.049 ha)
225.58 - 226.00	(0.037 ha)
224.67 - 225.58	(0.040 ha)
222.43 - 224.67	(0.047 ha)
220.21 - 222.43	(0.048 ha)
220.02 - 220.21	(0.045 ha)
218.86 - 220.02	(0.046 ha)
215.98 - 218.86	(0.044 ha)
213.64 - 215.98	(0.040 ha)

# DAFWA Proposed Barrier Fence Survey Sections

W3

## Legend – Grade %

Green	0-1
Bright Green	1-2
Yellow	2-3
Orange	3-4
Red	4-5



# Elevation Survey Report

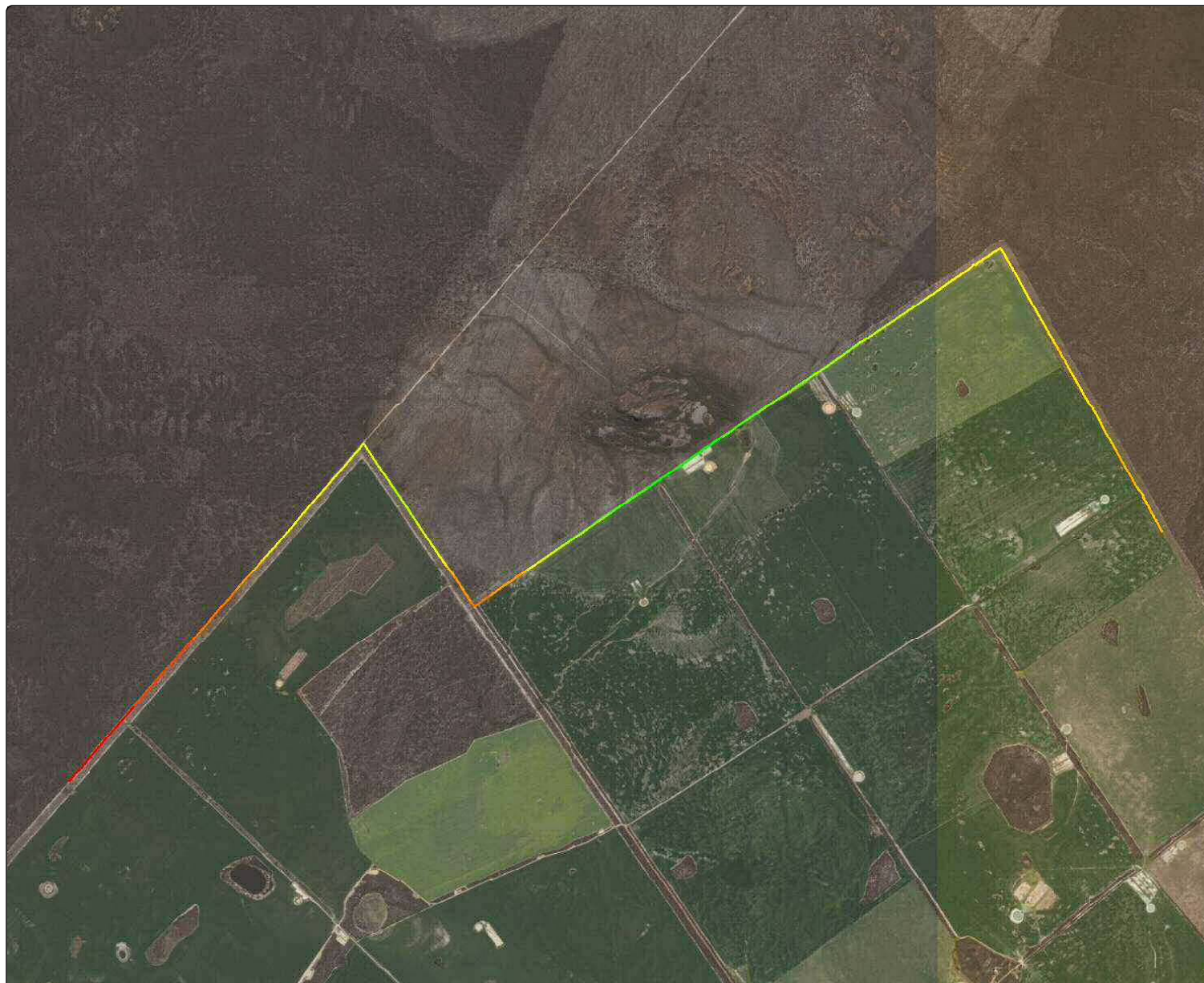
**Grower :** DAFWA  
**Farm :** Dog Fence

**Field:** E1  
**Year:** 2015  
**Operation:** Site Verification  
**Product:** NO Product  
**Operational Instance:** Elevation log

Dataset	Count	Start Date	Length m	Minimum Elevation m	Maximum Elevation m
16/06/2015 3:35 PM	2058	16/06/2015	13,656	174.71	213.96
<b>Totals</b>	<b>2058</b>	<b>16/06/2015</b>	<b>13,656</b>	<b>174.71</b>	<b>213.96</b>
		Minimum		Minimum	Maximum

*Data Altered/Created through Analysis*

# Site Verification 2015 - E1



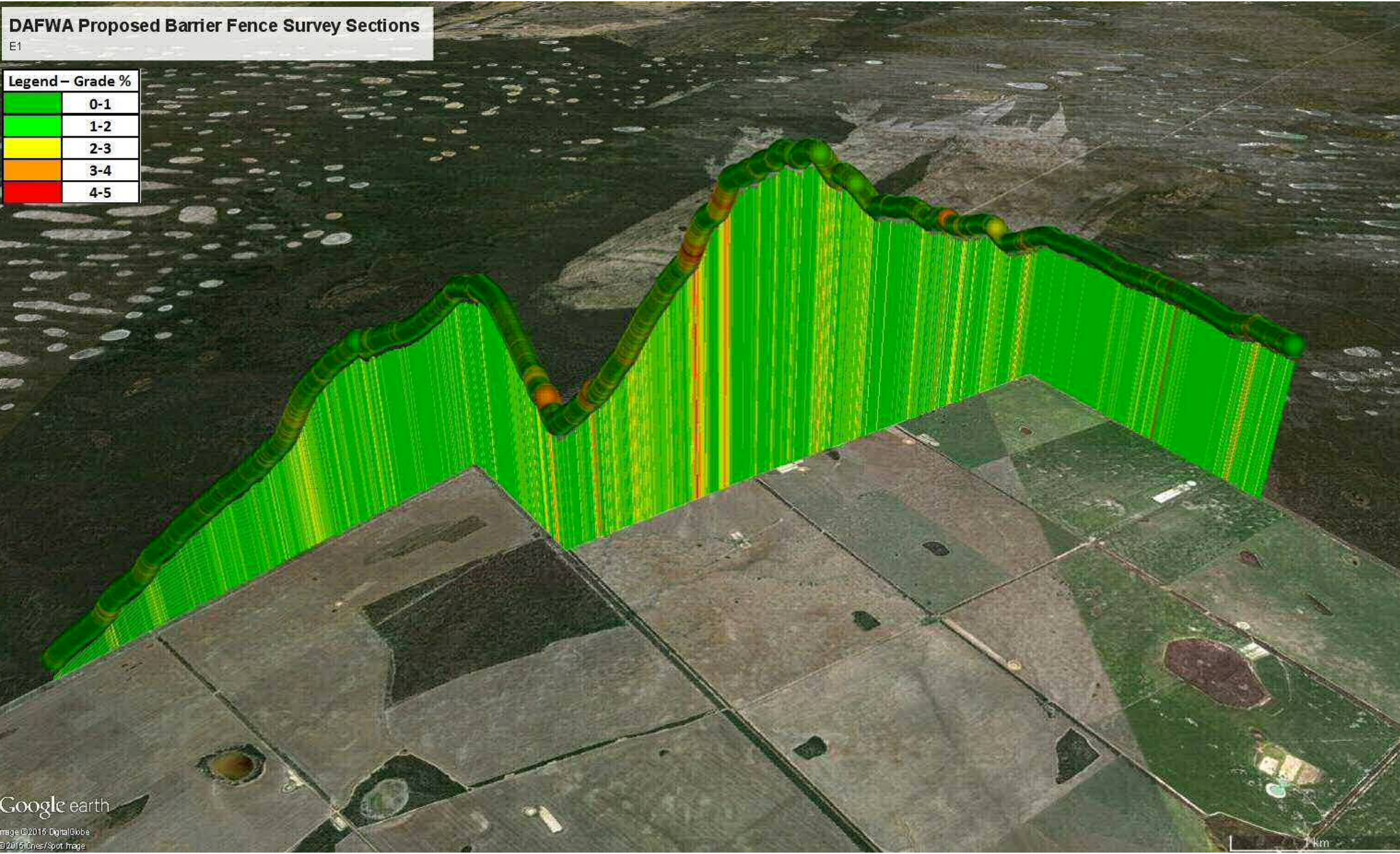
Elevation (m)	
212.24 - 213.96	(0.080 ha)
208.05 - 212.24	(0.072 ha)
203.47 - 208.05	(0.075 ha)
200.49 - 203.47	(0.072 ha)
198.74 - 200.49	(0.076 ha)
197.79 - 198.74	(0.082 ha)
195.69 - 197.79	(0.075 ha)
194.41 - 195.69	(0.081 ha)
194.07 - 194.41	(0.079 ha)
193.89 - 194.07	(0.077 ha)
193.66 - 193.89	(0.070 ha)
193.46 - 193.66	(0.068 ha)
193.18 - 193.46	(0.068 ha)
192.58 - 193.18	(0.072 ha)
189.51 - 192.58	(0.081 ha)
184.69 - 189.51	(0.077 ha)
180.59 - 184.69	(0.076 ha)
174.71 - 180.59	(0.084 ha)

# DAFWA Proposed Barrier Fence Survey Sections

E1

## Legend - Grade %

Green	0-1
Bright Green	1-2
Yellow	2-3
Orange	3-4
Red	4-5



Google earth

Image © 2016 DigitalGlobe  
© 2015 OneSpot Image



# Elevation Survey Report

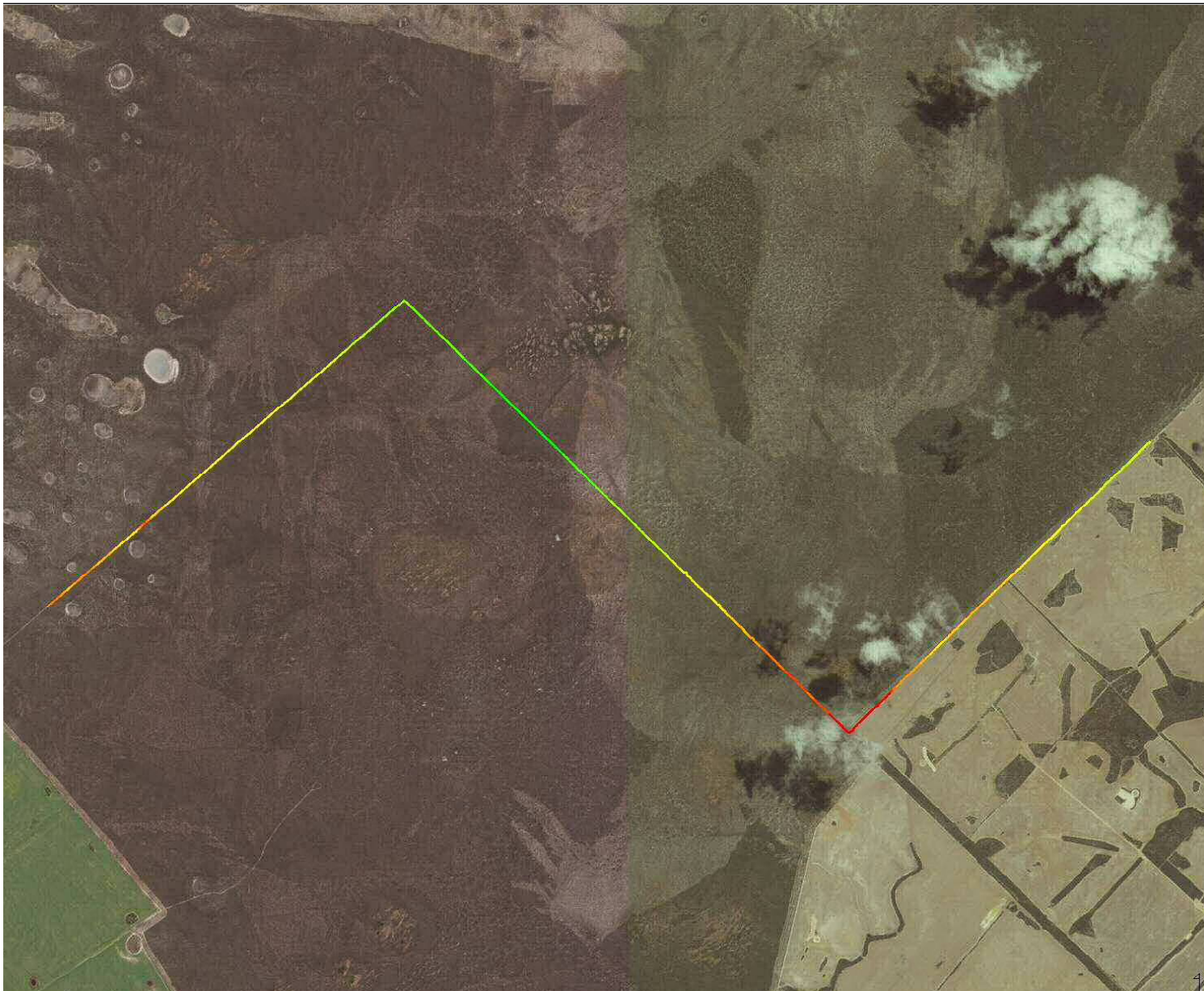
**Grower :** DAFWA  
**Farm :** Dog Fence

**Field:** E2  
**Year:** 2015  
**Operation:** Site Verification  
**Product:** NO Product  
**Operational Instance:** Elevation log

Dataset	Count	Start Date	Length m	Minimum Elevation m	Maximum Elevation m
16/06/2015 1:29 PM	2647	16/06/2015	14,341	180.24	215.30
<b>Totals</b>	<b>2647</b>	<b>16/06/2015</b>	<b>14,341</b>	<b>180.24</b>	<b>215.30</b>
		Minimum		Minimum	Maximum

*Data Altered/Created through Analysis*

# Site Verification 2015 - E2

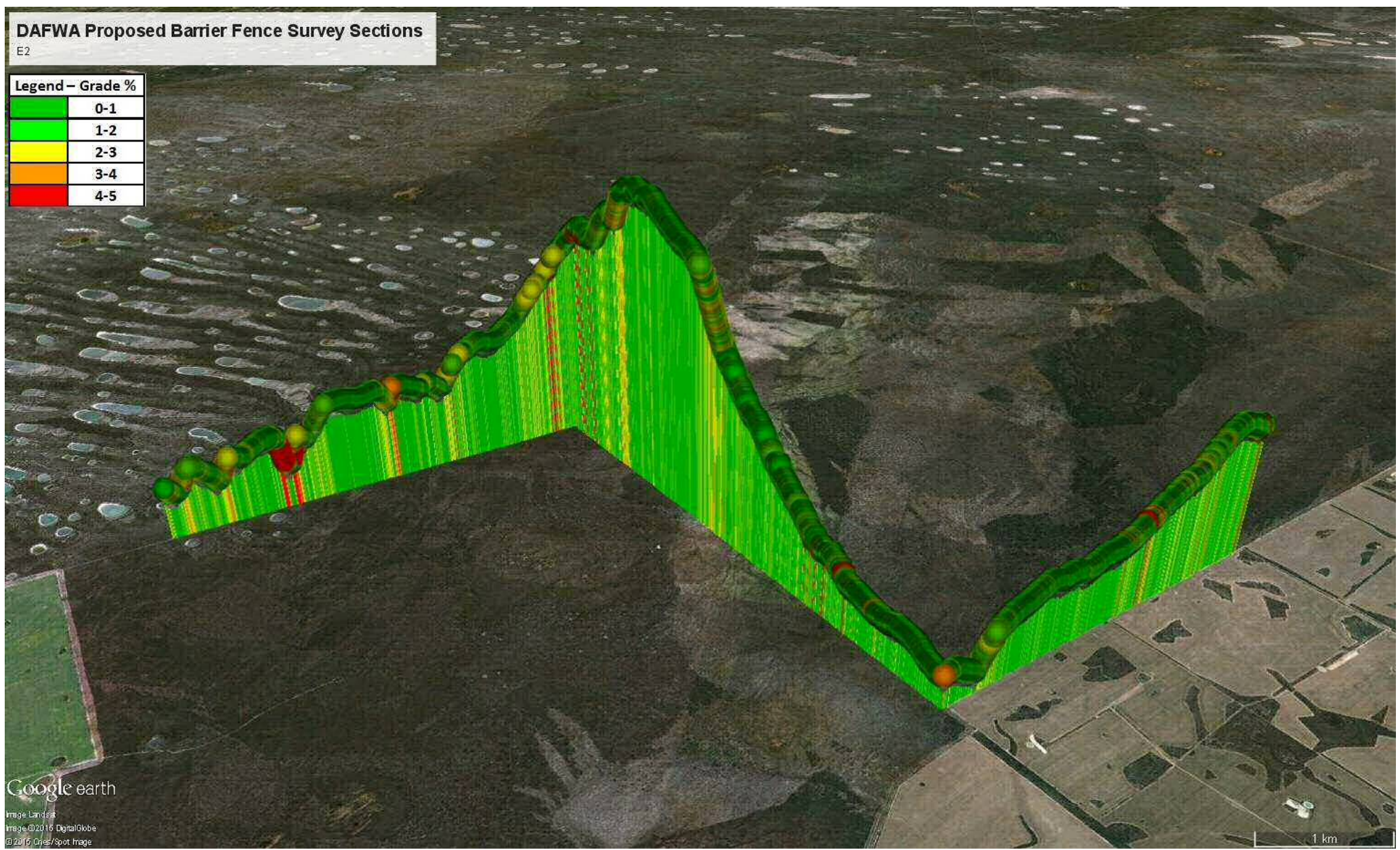


Elevation (m)	
212.41 - 215.30	(0.098 ha)
209.34 - 212.41	(0.078 ha)
205.39 - 209.34	(0.086 ha)
199.46 - 205.39	(0.084 ha)
195.35 - 199.46	(0.081 ha)
193.81 - 195.35	(0.078 ha)
192.12 - 193.81	(0.085 ha)
190.32 - 192.12	(0.078 ha)
189.74 - 190.32	(0.096 ha)
188.55 - 189.74	(0.081 ha)
187.18 - 188.55	(0.072 ha)
186.62 - 187.18	(0.078 ha)
186.29 - 186.62	(0.081 ha)
185.71 - 186.29	(0.073 ha)
184.28 - 185.71	(0.076 ha)
183.60 - 184.28	(0.071 ha)
183.10 - 183.60	(0.057 ha)
180.24 - 183.10	(0.080 ha)

# DAFWA Proposed Barrier Fence Survey Sections

E2

Legend - Grade %	
Green	0-1
Light Green	1-2
Yellow	2-3
Orange	3-4
Red	4-5



# Elevation Survey Report



**Grower :** DAFWA  
**Farm :** Dog Fence

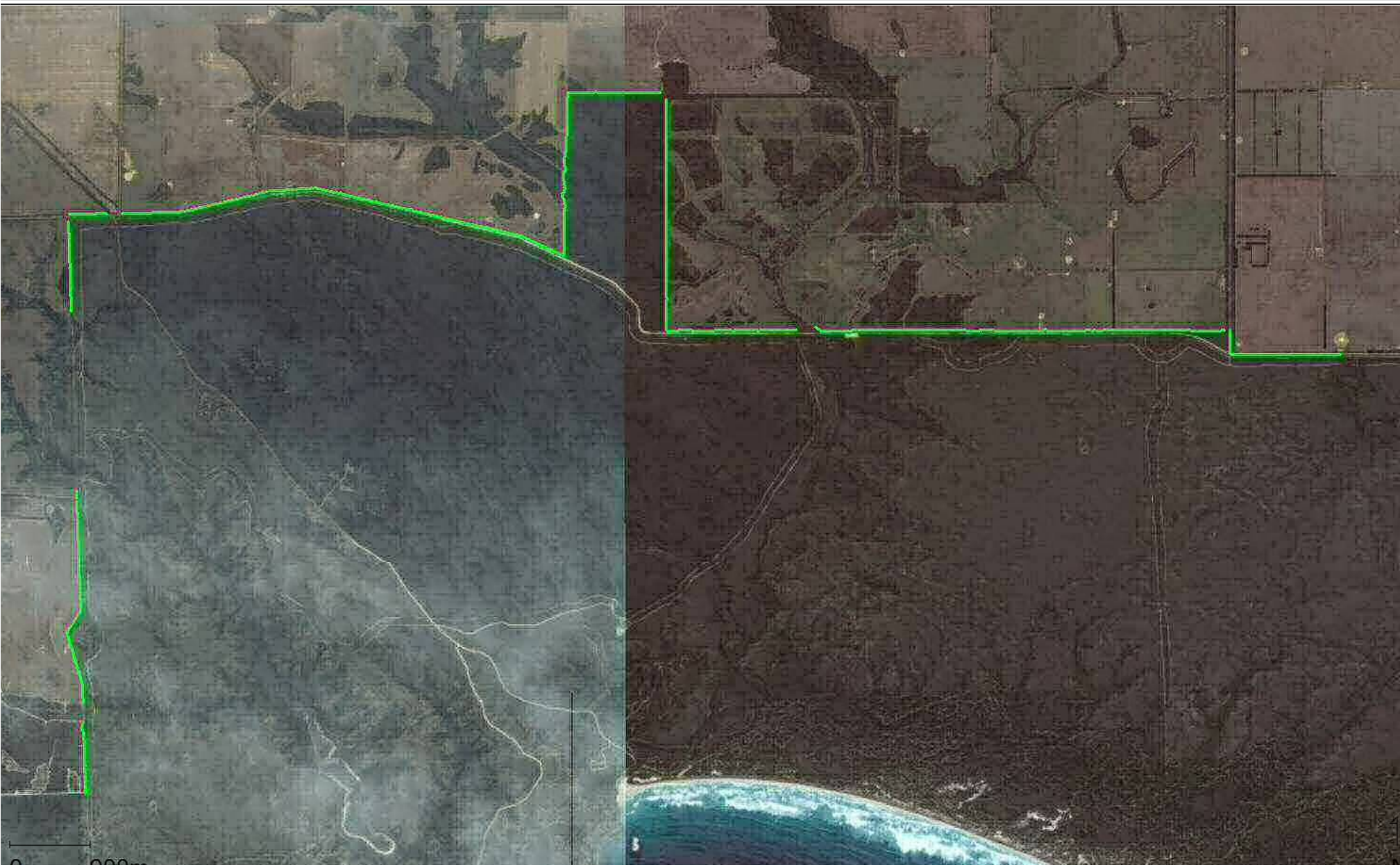
**Field:** E3  
**Year:** 2015  
**Operation:** Site Verification  
**Product:** NO Product  
**Operational Instance:** Elevation log

Dataset	Count	Start Date	Length m	Minimum Elevation m	Maximum Elevation m
18/06/2015 10:51 AM	846	18/06/2015	4,052.7	19.79	66.21
18/06/2015 11:36 AM	789	18/06/2015	4,598.2	21.96	73.88
18/06/2015 12:26 PM	1427	18/06/2015	8,816.0	36.99	77.24
18/06/2015 1:58 PM	1003	18/06/2015	5,225.3	53.58	96.51
<b>Totals</b>	<b>4065</b>	<b>18/06/2015</b>	<b>22,692</b>	<b>19.79</b>	<b>96.51</b>

Minimum
Minimum
Maximum

*Data Altered/Created through Analysis*

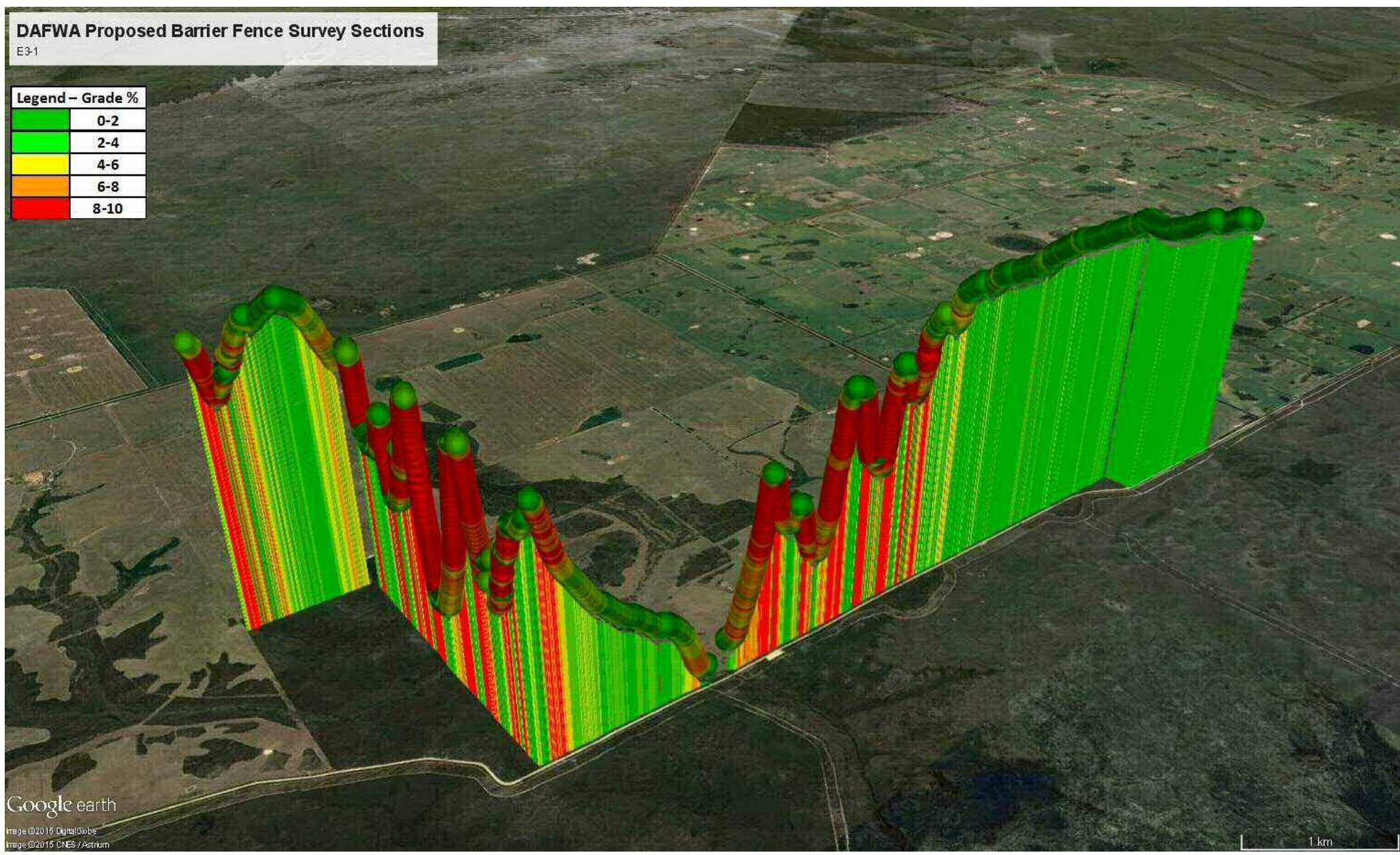
# Elevation log - 2015 - E3



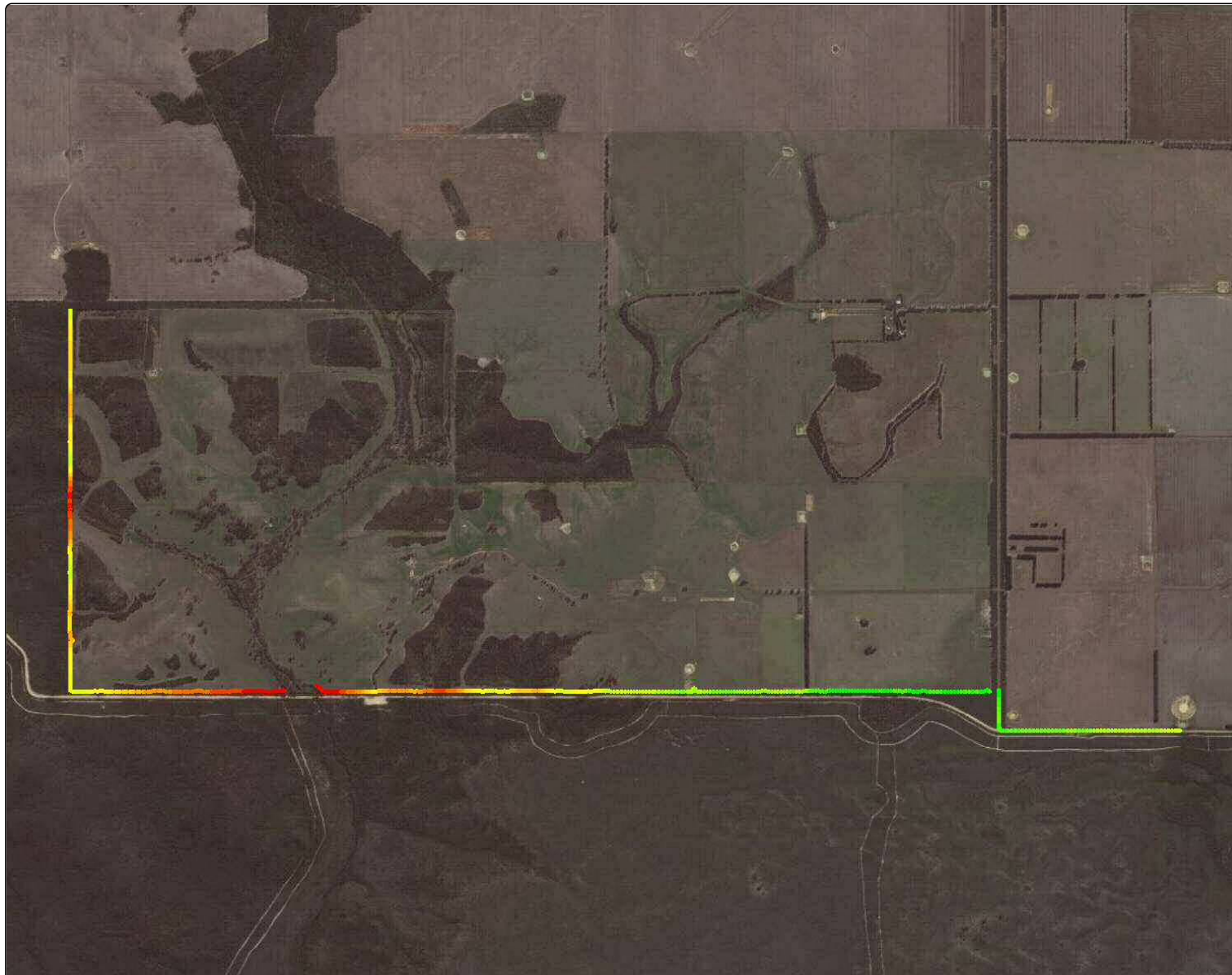
# DAFWA Proposed Barrier Fence Survey Sections

E3-1

Legend – Grade %	
Green	0-2
Light Green	2-4
Yellow	4-6
Orange	6-8
Red	8-10



# Site Verification 2015 - E3-1



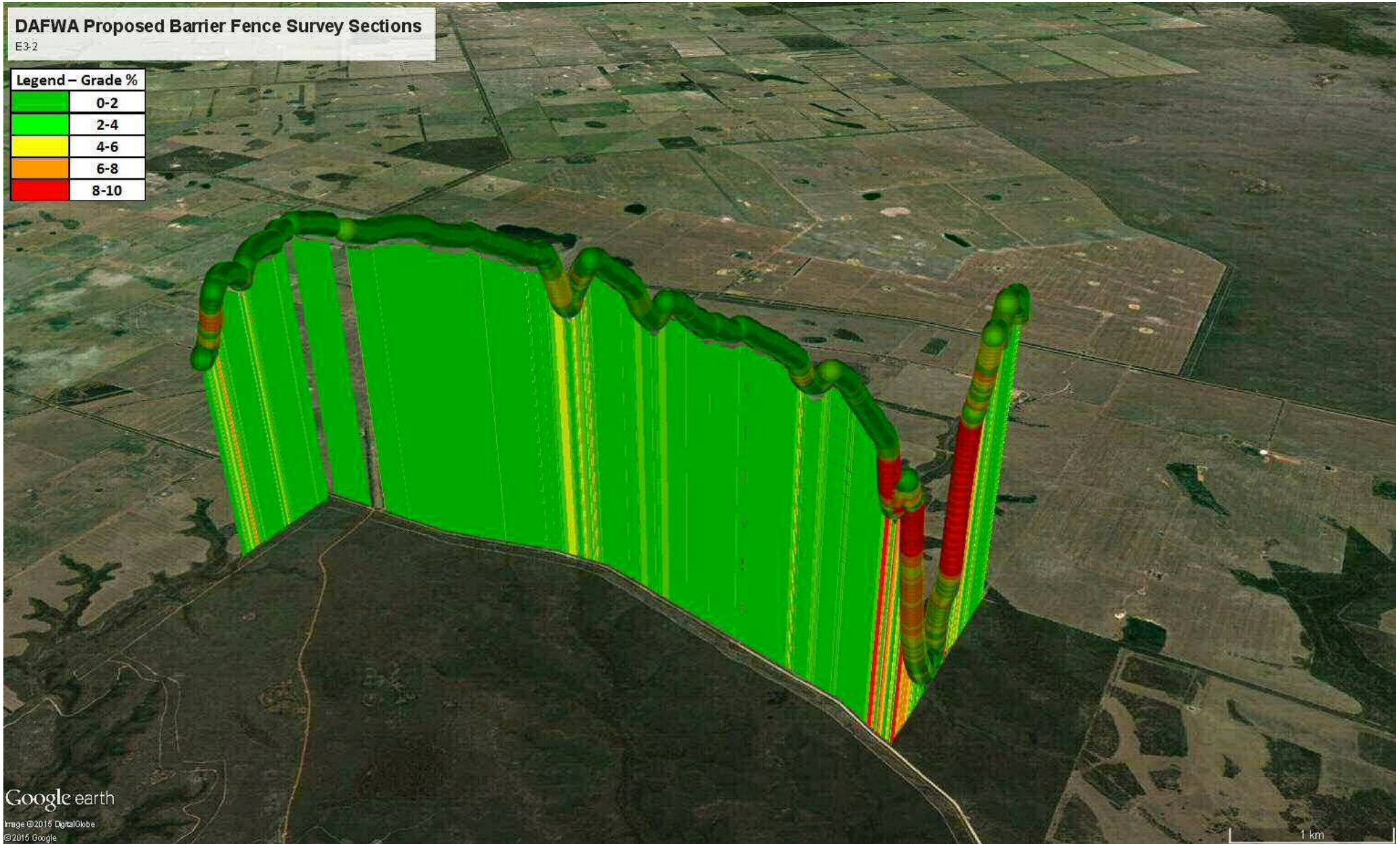
Elevation (m)	
73.08 - 73.88	(0.083 ha)
72.77 - 73.08	(0.066 ha)
72.24 - 72.77	(0.074 ha)
71.69 - 72.24	(0.070 ha)
70.35 - 71.69	(0.069 ha)
65.16 - 70.35	(0.066 ha)
61.47 - 65.16	(0.042 ha)
59.43 - 61.47	(0.042 ha)
56.22 - 59.43	(0.042 ha)
52.93 - 56.22	(0.043 ha)
50.00 - 52.93	(0.046 ha)
48.10 - 50.00	(0.052 ha)
44.86 - 48.10	(0.045 ha)
42.29 - 44.86	(0.056 ha)
38.05 - 42.29	(0.058 ha)
33.27 - 38.05	(0.058 ha)
30.48 - 33.27	(0.048 ha)
19.79 - 30.48	(0.054 ha)

# DAFWA Proposed Barrier Fence Survey Sections

E3-2

## Legend - Grade %

Green	0-2
Bright Green	2-4
Yellow	4-6
Orange	6-8
Red	8-10



Google earth

Image ©2015 DigitalGlobe  
©2015 Google



# Site Verification 2015 - E3-2

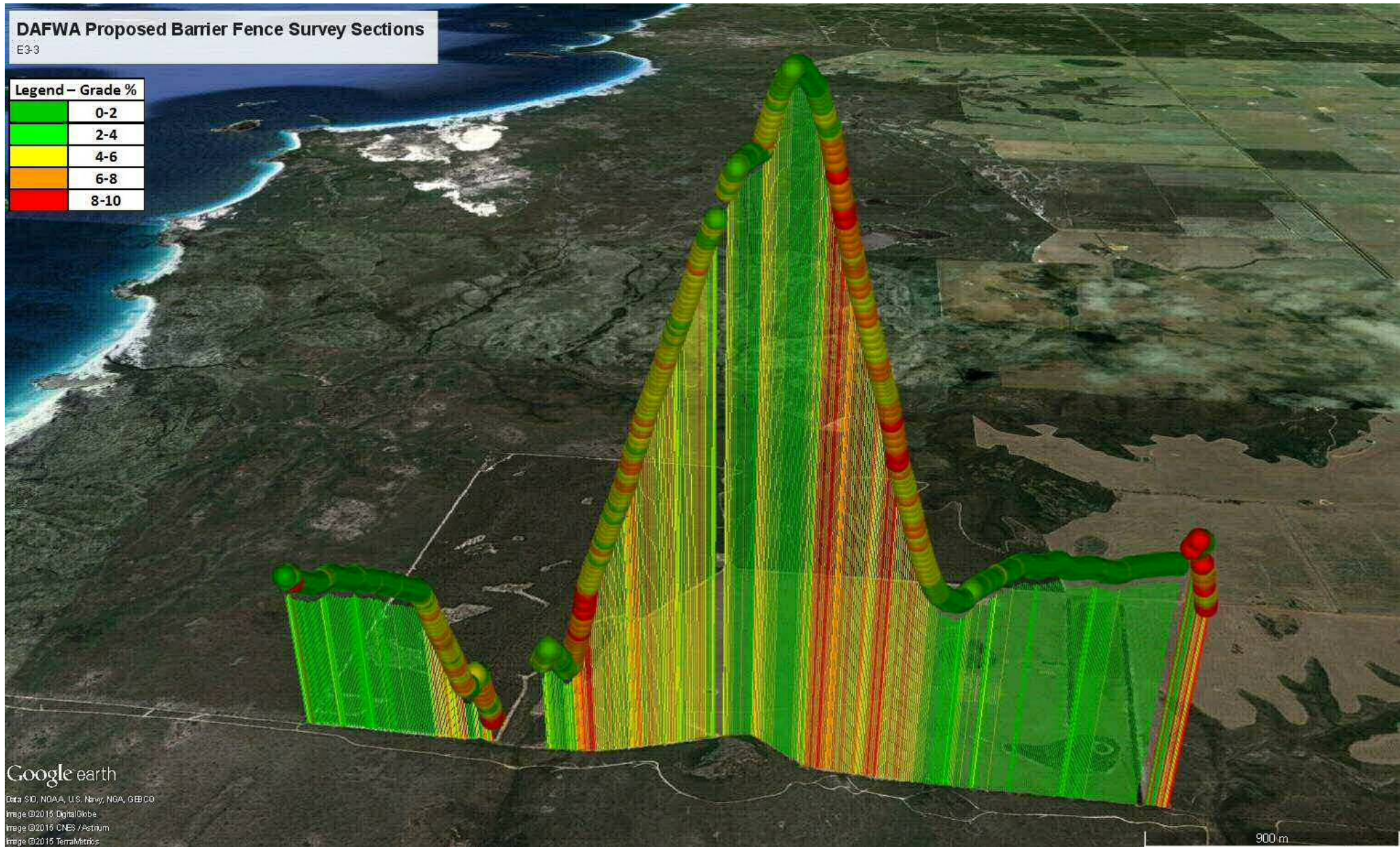


Elevation (m)	
76.52 - 77.24	(0.068 ha)
75.86 - 76.52	(0.067 ha)
75.38 - 75.86	(0.058 ha)
74.99 - 75.38	(0.054 ha)
74.76 - 74.99	(0.047 ha)
74.45 - 74.76	(0.051 ha)
74.04 - 74.45	(0.058 ha)
73.71 - 74.04	(0.063 ha)
73.21 - 73.71	(0.053 ha)
72.59 - 73.21	(0.059 ha)
71.72 - 72.59	(0.051 ha)
70.70 - 71.72	(0.057 ha)
69.08 - 70.70	(0.047 ha)
66.04 - 69.08	(0.042 ha)
63.50 - 66.04	(0.038 ha)
49.85 - 63.50	(0.040 ha)
39.99 - 49.85	(0.045 ha)
36.99 - 39.99	(0.039 ha)

# DAFWA Proposed Barrier Fence Survey Sections

E3-3

Legend - Grade %	
Green	0-2
Light Green	2-4
Yellow	4-6
Orange	6-8
Red	8-10



Google earth  
Data S/D, NOAA, U.S. Navy, NGA, GEBCO  
Image ©2015 DigitalGlobe  
Image ©2015 CNES / Airbus  
Image ©2015 TerraMetrics

900 m

# Site Verification 2015 - E3-3



Elevation (m)

93.68 - 96.50	(0.023 ha)
89.77 - 93.68	(0.020 ha)
84.63 - 89.77	(0.017 ha)
79.81 - 84.63	(0.018 ha)
74.23 - 79.81	(0.019 ha)
70.78 - 74.23	(0.016 ha)
69.29 - 70.78	(0.021 ha)
68.94 - 69.29	(0.019 ha)
68.82 - 68.94	(0.019 ha)
67.69 - 68.82	(0.019 ha)
66.15 - 67.69	(0.019 ha)
63.98 - 66.15	(0.016 ha)
63.81 - 63.98	(0.017 ha)
63.58 - 63.81	(0.015 ha)
63.25 - 63.58	(0.017 ha)
59.54 - 63.25	(0.016 ha)
58.47 - 59.54	(0.012 ha)
53.58 - 58.47	(0.016 ha)