



Legend

- Development Envelope
- Vegetation Condition**
- Cleared
- D - CD

Cadasta: Landgate
 Imagery: Landgate (May 2018)
 Vegetation: GHD



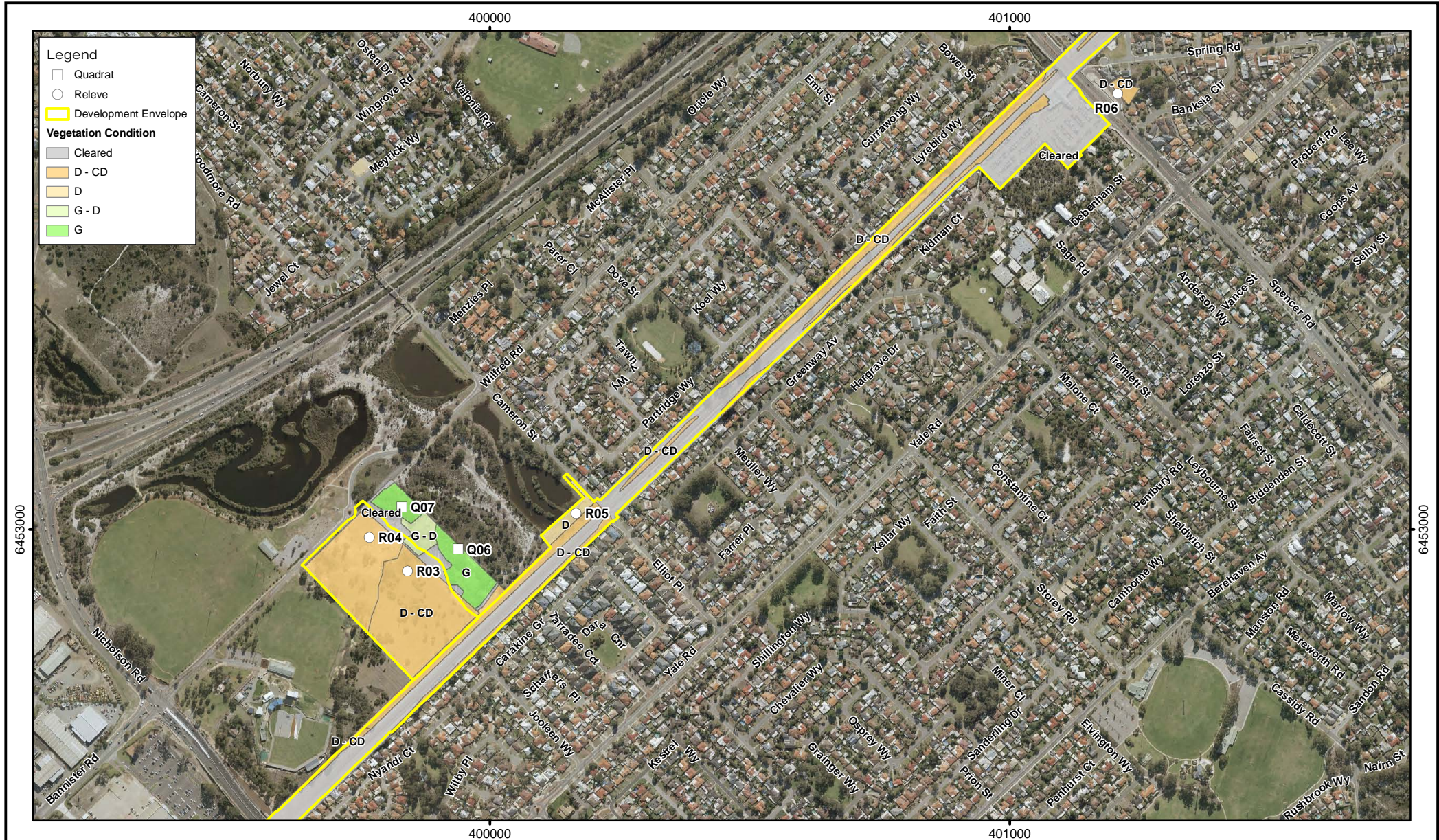
0 100 200m
 Scale: 1:10,000
 MGA94 (Zone 50)
 CAD Ref: a2600_CEM_F09
 Date: November 2018 Rev: A A4



Author: P. Zuvela AU Ref: PTA2018-001
 Drawn: CAD Resources ~ www.cadresources.com.au
 Tel: (08) 9246 3242 ~ Fax (08) 9246 3202

Thornlie to Cockburn Link Project
Vegetation Condition
 Construction Environmental Management Plan

Figure:
9.6



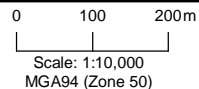
Legend

- Quadrat
- Releve
- ▭ Development Envelope

Vegetation Condition

- ▭ Cleared
- ▭ D - CD
- ▭ D
- ▭ G - D
- ▭ G

Cadasta: Landgate
 Imagery: Landgate (May 2018)
 Vegetation: GHD



CAD Ref: a2600_CEM_F09
 Date: November 2018 Rev: A A4

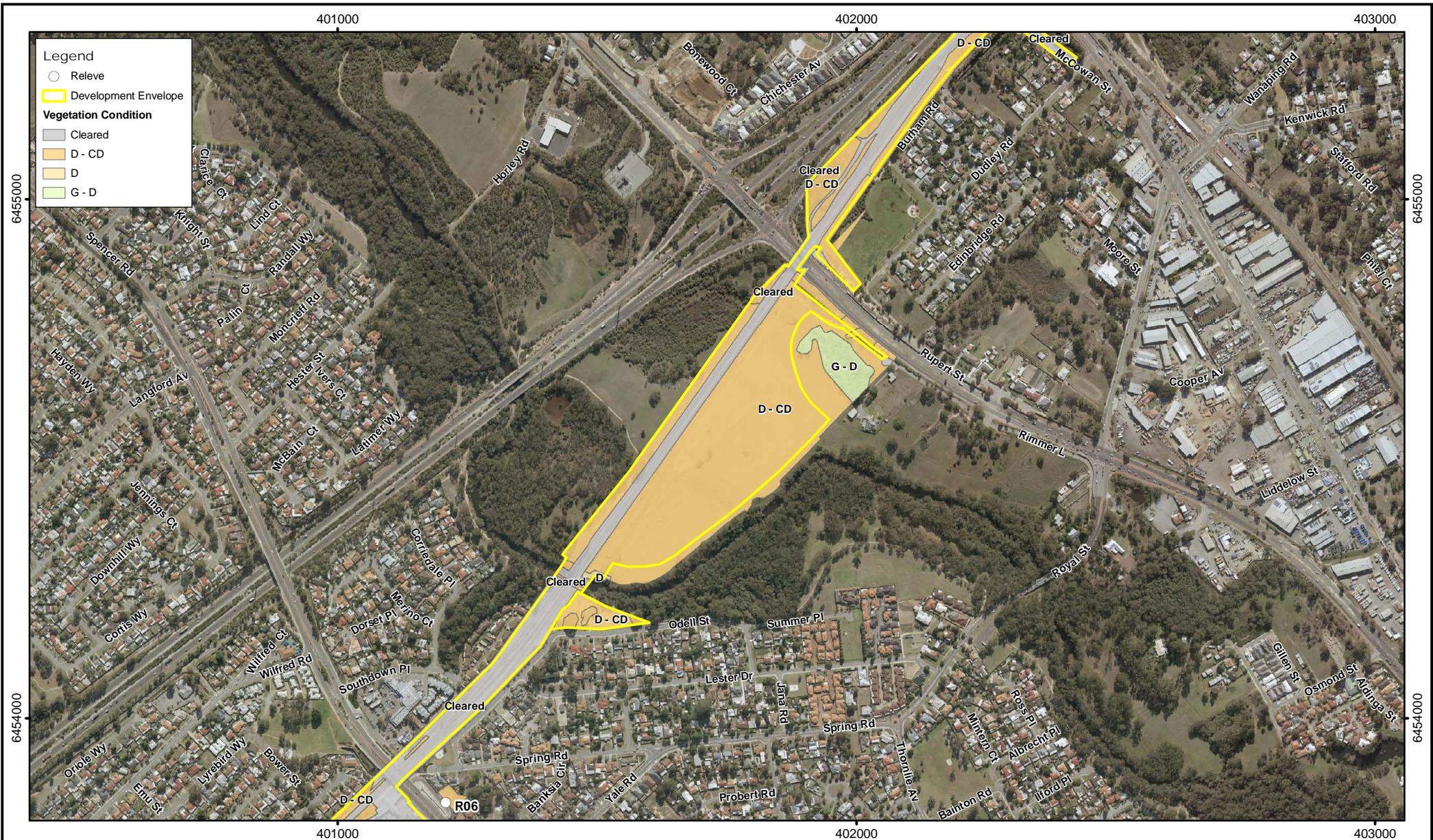


Author: P. Zuvela AU Ref: PTA2018-001
 Drawn: CAD Resources ~ www.cadresources.com.au
 Tel: (08) 9246 3242 ~ Fax (08) 9246 3202

Thornlie to Cockburn Link Project
Vegetation Condition
 Construction Environmental Management Plan

Figure:

9.7



Legend

- Releve
- ▭ Development Envelope

Vegetation Condition

- ▭ Cleared
- ▭ D - CD
- ▭ D
- ▭ G - D

Cadasta: Landgate
 Imagery: Landgate (May 2018)
 Vegetation: GHD



0 100 200m
 Scale: 1:10,000
 MGA94 (Zone 50)

CAD Ref: a2600_CEM_F09
 Date: November 2018 Rev: A A4

Aurora
 environmental
ASSESS • ADVISE • APPLY

Author: P. Zuvela AU Ref: PTA2018-001
 Drawn: CAD Resources ~ www.cadresources.com.au
 Tel: (08) 9246 3242 ~ Fax (08) 9246 3202

Thornlie to Cockburn Link Project
Vegetation Condition
 Construction Environmental Management Plan

Figure:
9.8



Cadasta: Landgate
 Imagery: Landgate (May 2018)
 Vegetation: GHD

N

0 100 200m

Scale: 1:10,000
 MGA94 (Zone 50)

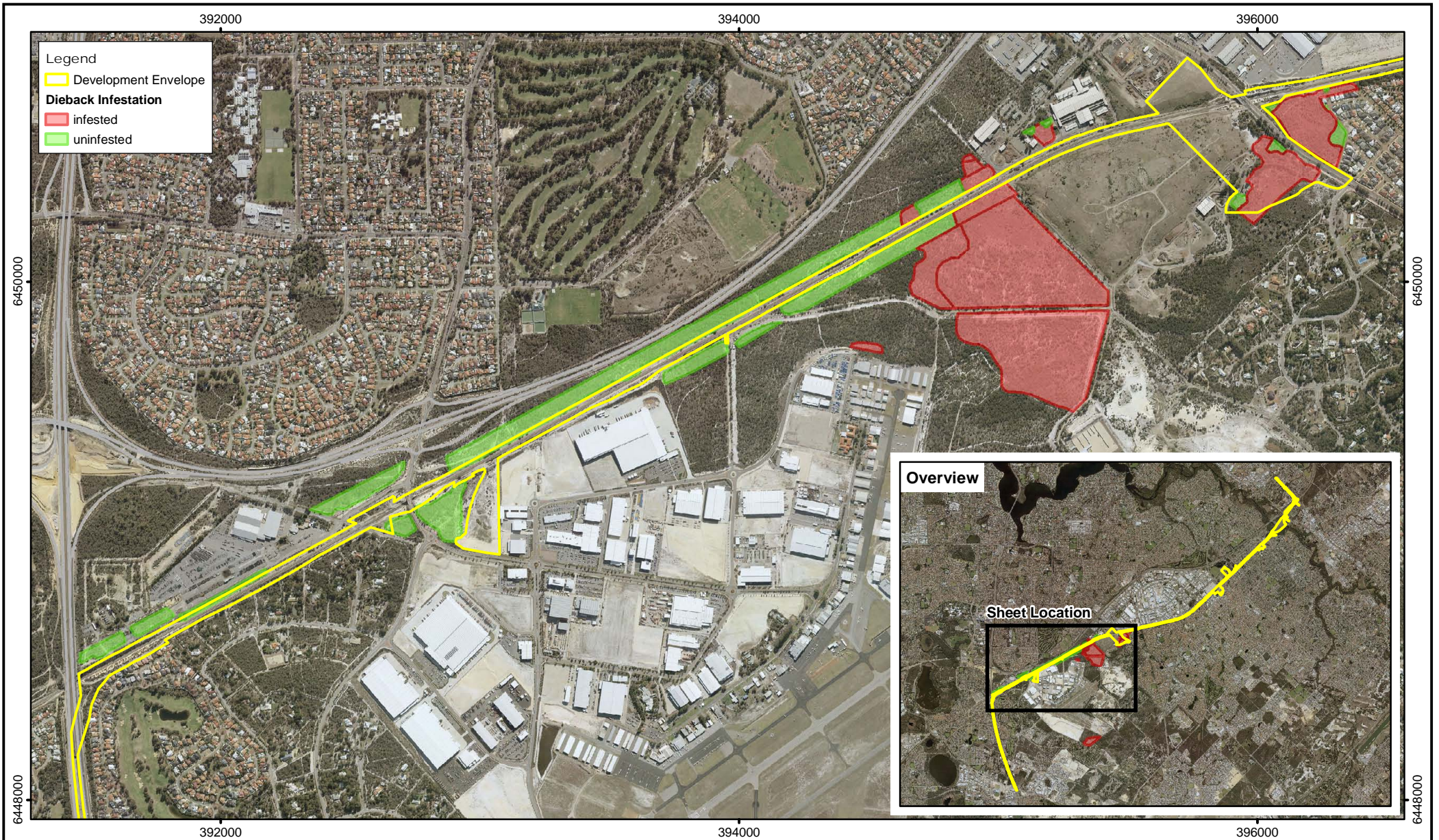
CAD Ref: a2600_CEM_F09
 Date: November 2018 Rev: A A4

Aurora
 environmental
ASSESS • ADVISE • APPLY

Author: P. Zuvela AU Ref: PTA2018-001
 Drawn: CAD Resources ~ www.cadresources.com.au
 Tel: (08) 9246 3242 ~ Fax (08) 9246 3202

Thornlie to Cockburn Link Project
Vegetation Condition
 Construction Environmental Management Plan

Figure:
9.9



Imagery: Landgate (Nov 2017)
Dieback (Glevan (2014, 2018))



0 200 400m

Scale: 1:20,000
MGA94 (Zone 50)

CAD Ref: a2600_CEM_F10

Date: November 2018 Rev: A A4



Author: P. Zuvela AU Ref: PTA2018-001

Drawn: CAD Resources ~ www.cadresources.com.au
Tel: (08) 9246 3242 ~ Fax (08) 9246 3202

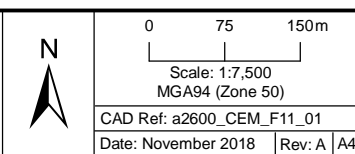
Thornlie to Cockburn Link Project
Dieback Infested Areas
Construction Environmental Management Plan

Figure:

10



Local Gov Bndry, Cadasta: Landgate
 Roads: MRWA
 Bush Frever: DPLH
 Imagery: Landgate (Aug 2017)
 Flora: GHD



Aurora
 environmental
 ASSESS • ADVISE • APPLY

Author: P. Zuvela AU Ref: PTA2018-001
 Drawn: CAD Resources ~ www.cadresources.com.au
 Tel: (08) 9246 3242 ~ Fax (08) 9246 3202

Thornlie to Cockburn Link Project
Bush Forever Site No. 245
Ken Hurst Park Vegetation Types
Construction Environmental Management Plan

Figure:
11.1



6450000

6450000

394000

395000

394000

395000

John Connell Reserve

Bush Forever Site: 245

Ken Hurst Park

D - CD

D - CD

D

Cleared

Cleared

VG

G

D - CD

VG

D - CD

VG

D - CD

E

Cleared

Local Gov Bndry, Cadasta: Landgate
 Roads: MRWA
 Bush Frever: DPLH
 Imagery: Landgate (Aug 2017)
 Flora: GHD



0 75 150m
 Scale: 1:7,500
 MGA94 (Zone 50)
 CAD Ref: a2600_CEM_F11_02
 Date: November 2018 Rev: A A4



Author: P. Zuvela AU Ref: PTA2018-001
 Drawn: CAD Resources ~ www.cadresources.com.au
 Tel: (08) 9246 3242 ~ Fax (08) 9246 3202

Thornlie to Cockburn Link Project
Bush Forever Site No. 245 Ken Hurst Park Vegetation Condition
 Construction Environmental Management Plan

Figure:
11.2



Local Gov Bndry, Cadasta: Landgate
 Roads: MRWA
 Bush Frever: DPLH
 Imagery: Landgate (Aug 2017)
 Flora: GHD



0 75 150m
 Scale: 1:7,500
 MGA94 (Zone 50)
 CAD Ref: a2600_CEM_F11_03
 Date: November 2018 Rev: A A4

Aurora
 environmental
 ASSESS • ADVISE • APPLY
 Author: P. Zuvela AU Ref: PTA2018-001
 Drawn: CAD Resources ~ www.cadresources.com.au
 Tel: (08) 9246 3242 ~ Fax (08) 9246 3202

Thornlie to Cockburn Link Project
Bush Forever Site No. 388
Jandakot Airport Vegetation Types
Construction Environmental Management Plan

Figure:
11.3



Legend

- Development Envelope
- Cadastral Boundary
- Bush Forever Site

Vegetation Condition

- NS
- Cleared
- D - CD
- D
- G - D
- G
- VG

Local Gov Bndry, Cadasta: Landgate
 Roads: MRWA
 Bush Frever: DPLH
 Imagery: Landgate (Aug 2017)
 Flora: GHD



0 75 150m
 Scale: 1:7,500
 MGA94 (Zone 50)
 CAD Ref: a2600_CEM_F11_04
 Date: November 2018 Rev: A A4

Aurora
 environmental
 ASSESS • ADVISE • APPLY

Author: P. Zuvela AU Ref: PTA2018-001
 Drawn: CAD Resources ~ www.cadresources.com.au
 Tel: (08) 9246 3242 ~ Fax (08) 9246 3202

Thornlie to Cockburn Link Project
Bush Forever Site No. 388 Jandakot
Airport Vegetation Condition
Construction Environmental Management Plan

Figure:
11.4



Legend

- Development Envelope
- Cadastral Boundary
- Bush Forever Site

Vegetation Types

- Cleared - Road, rail, infrastructure
- VT03 - *Melaleuca preissiana M. raphiophylla* open woodland
- VT06 - Scattered natives amongst weeds
- VT08 - *Corymbia calophylla* open woodland
- VT09 - *Melaleuca raphiophylla* woodland

Local Gov Bndry, Cadasta: Landgate
 Roads: MRWA
 Bush Frever: DPLH
 Imagery: Landgate (Aug 2017)
 Flora: GHD



0 100 200m
 Scale: 1:10,000
 MGA94 (Zone 50)
 CAD Ref: a2600_CEM_F11_05
 Date: November 2018 Rev: A A4



Author: P. Zuvela AU Ref: PTA2018-001
 Drawn: CAD Resources ~ www.cadresources.com.au
 Tel: (08) 9246 3242 ~ Fax (08) 9246 3202

Thornlie to Cockburn Link Project
Bush Forever Site No. 456
Nicholson Road Bushland
Vegetation Types
Construction Environmental Management Plan

Figure:
11.5



6453000

6453000

399000

400000

399000

400000

Bush Forever Site: 456

Legend

- Development Envelope
- Cadastral Boundary
- Bush Forever Site

Vegetation Condition

- Cleared
- D - CD
- D
- G - D
- G

Local Gov Bndry, Cadasta: Landgate
 Roads: MRWA
 Bush Frever: DPLH
 Imagery: Landgate (Aug 2017)
 Flora: GHD



0 100 200m

Scale: 1:10,000
 MGA94 (Zone 50)

CAD Ref: a2600_CEM_F11_06
 Date: November 2018 Rev: A A4



Author: P. Zuvela AU Ref: PTA2018-001
 Drawn: CAD Resources ~ www.cadresources.com.au
 Tel: (08) 9246 3242 ~ Fax (08) 9246 3202

Thornlie to Cockburn Link Project
Bush Forever Site No. 456
Nicholson Road Bushland
Vegetation Condition
Construction Environmental Management Plan

Figure:
11.6



Legend

- Development Envelope
- Cadastral Boundary
- Bush Forever Site

Vegetation Types

- Cleared - Road, rail, infrastructure
- VT05 - *Eucalyptus rudis Melaleuca raphiophylla* open forest
- VT06 - Scattered natives amongst weeds
- VT07 - Grassland/Herbland

Local Gov Bndry, Cadasta: Landgate
 Roads: MRWA
 Bush Frever: DPLH
 Imagery: Landgate (Aug 2017)
 Flora: GHD



0 75 150m
 Scale: 1:7,500
 MGA94 (Zone 50)
 CAD Ref: a2600_CEM_F11_07
 Date: November 2018 Rev: A A4



Author: P. Zuvela AU Ref: PTA2018-001
 Drawn: CAD Resources ~ www.cadresources.com.au
 Tel: (08) 9246 3242 ~ Fax (08) 9246 3202

Thornlie to Cockburn Link Project
Bush Forever Site No. 246
Canning and Southern River
Vegetation Types
Construction Environmental Management Plan

Figure:
11.7



Local Gov Bndry, Cadasta: Landgate
 Roads: MRWA
 Bush Frever: DPLH
 Imagery: Landgate (Aug 2017)
 Flora: GHD

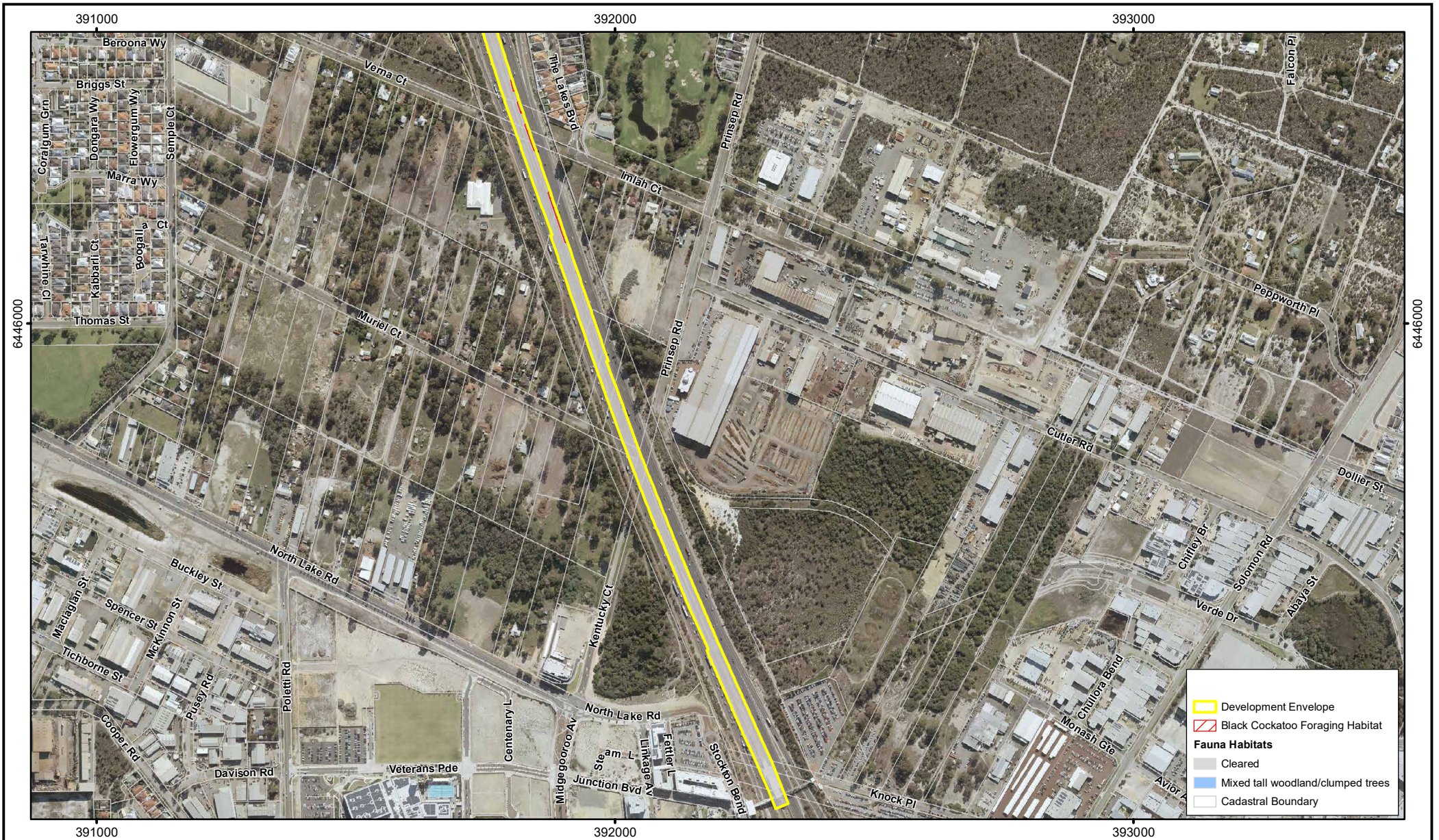


0 70 140 m
 Scale: 1:7,500
 MGA94 (Zone 50)
 CAD Ref: a2600_CEM_F11_08
 Date: November 2018 Rev: A A4

Aurora
 environmental
 ASSESS • ADVISE • APPLY
 Author: P. Zuvela AU Ref: PTA2018-001
 Drawn: CAD Resources ~ www.cadresources.com.au
 Tel: (08) 9246 3242 ~ Fax (08) 9246 3202

Thornlie to Cockburn Link Project
Bush Forever Site No. 246
Canning and Southern River
Vegetation Condition
Construction Environmental Management Plan

Figure:
11.8



Cadasta: Landgate
 Imagery: Landgate (May 2018)
 Fauna: GHD (Oct 2018)



0 100 200m
 Scale: 1:10,000
 MGA94 (Zone 50)
 CAD Ref: a2600_CEM_F12
 Date: April 2019 Rev: A A4

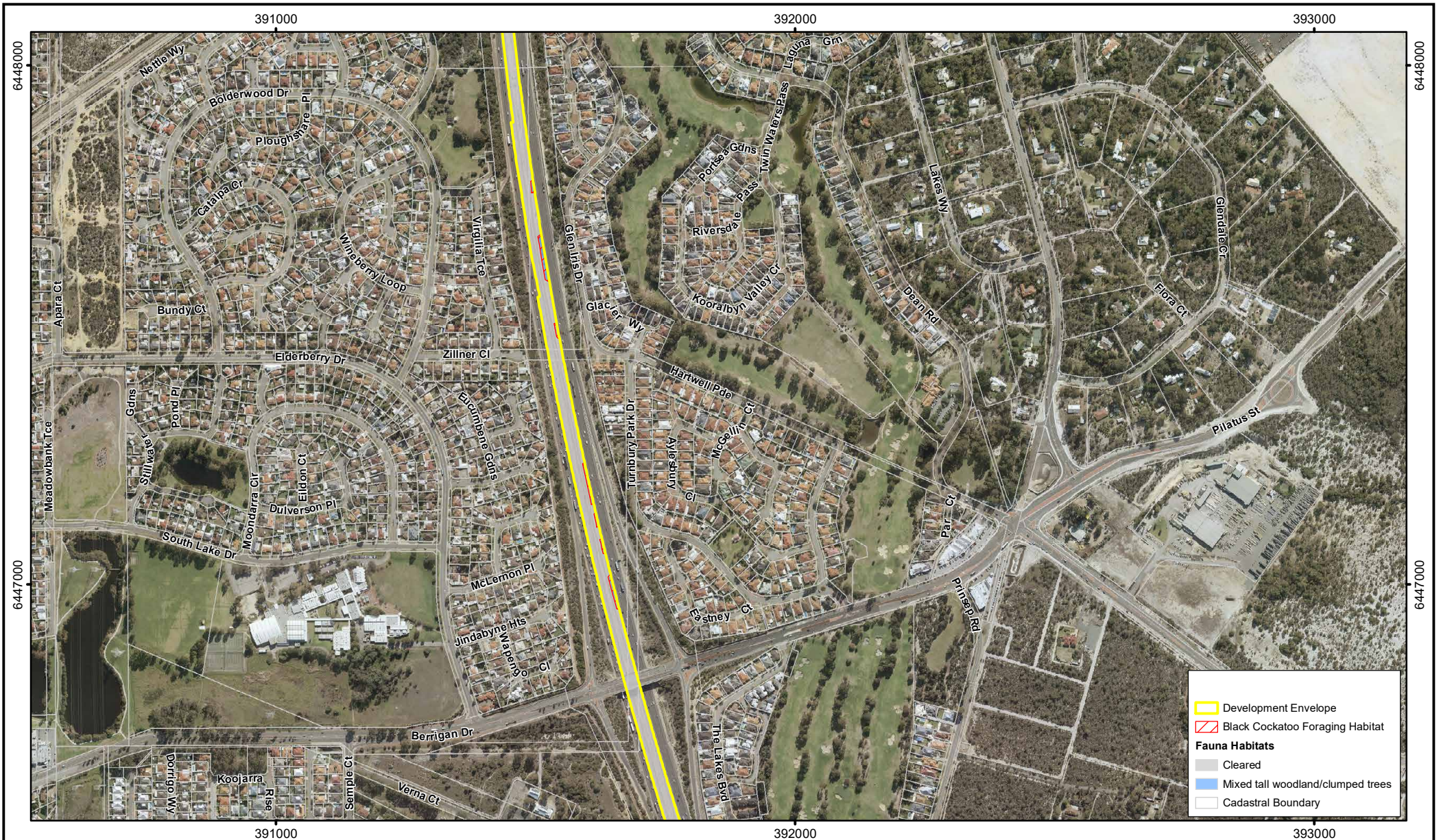


Author: P. Zuvela AU Ref: PTA2018-001
 Drawn: CAD Resources ~ www.cadresources.com.au
 Tel: (08) 9246 3242 ~ Fax (08) 9246 3202

Thornlie to Cockburn Link Project
Fauna Habitat Types
 Construction Environmental Management Plan

Figure:

12.1



Cadasta: Landgate
 Imagery: Landgate (May 2018)
 Fauna: GHD (Oct 2018)

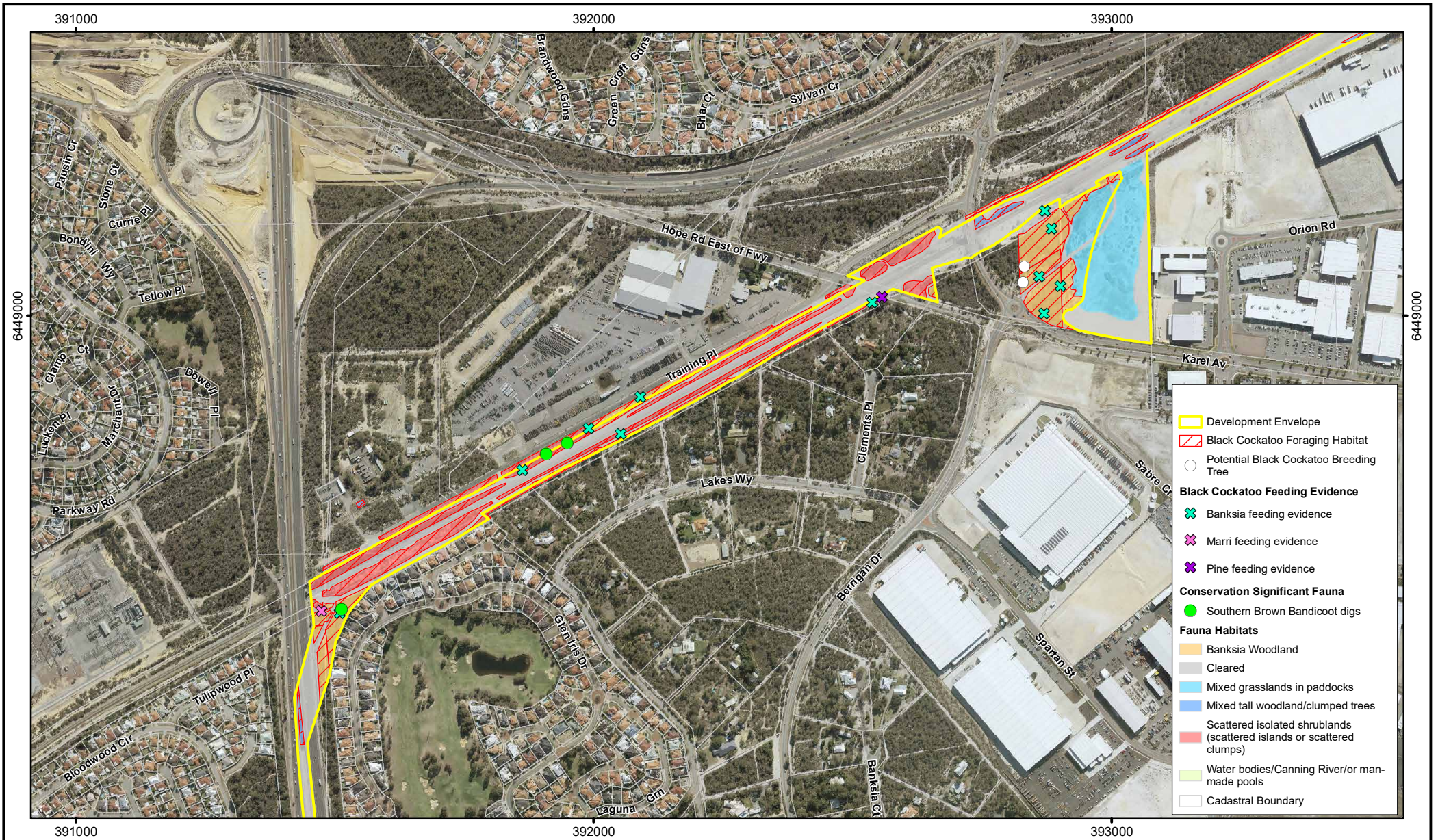


0 100 200m
 Scale: 1:10,000
 MGA94 (Zone 50)
 CAD Ref: a2600_CEM_F12
 Date: April 2019 Rev: A A4

Aurora
 environmental
 ASSESS • ADVISE • APPLY
 Author: P. Zuvela AU Ref: PTA2018-001
 Drawn: CAD Resources ~ www.cadresources.com.au
 Tel: (08) 9246 3242 ~ Fax (08) 9246 3202

Thornlie to Cockburn Link Project
Fauna Habitat Types
 Construction Environmental Management Plan

Figure:
12.2



- Development Envelope
- Black Cockatoo Foraging Habitat
- Potential Black Cockatoo Breeding Tree
- Black Cockatoo Feeding Evidence**
- ✕ Banksia feeding evidence
- ✕ Marri feeding evidence
- ✕ Pine feeding evidence
- Conservation Significant Fauna**
- Southern Brown Bandicoot digs
- Fauna Habitats**
- Banksia Woodland
- Cleared
- Mixed grasslands in paddocks
- Mixed tall woodland/clumped trees
- Scattered isolated shrublands (scattered islands or scattered clumps)
- Water bodies/Canning River/or man-made pools
- Cadastral Boundary

Cadasta: Landgate
 Imagery: Landgate (May 2018)
 Fauna: GHD (Oct 2018)



0 100 200m
 Scale: 1:10,000
 MGA94 (Zone 50)
 CAD Ref: a2600_CEM_F12
 Date: April 2019 Rev: A A4



Author: P. Zuvela AU Ref: PTA2018-001
 Drawn: CAD Resources ~ www.cadresources.com.au
 Tel: (08) 9246 3242 ~ Fax (08) 9246 3202

Thornlie to Cockburn Link Project
Fauna Habitat Types
 Construction Environmental Management Plan

Figure:
12.3



Cadasta: Landgate
 Imagery: Landgate (May 2018)
 Fauna: GHD (Oct 2018)



0 100 200m

Scale: 1:10,000
 MGA94 (Zone 50)

CAD Ref: a2600_CEM_F12

Date: April 2019

Rev: A A4



Author: P. Zuvela AU Ref: PTA2018-001

Drawn: CAD Resources ~ www.cadresources.com.au

Tel: (08) 9246 3242 ~ Fax (08) 9246 3202

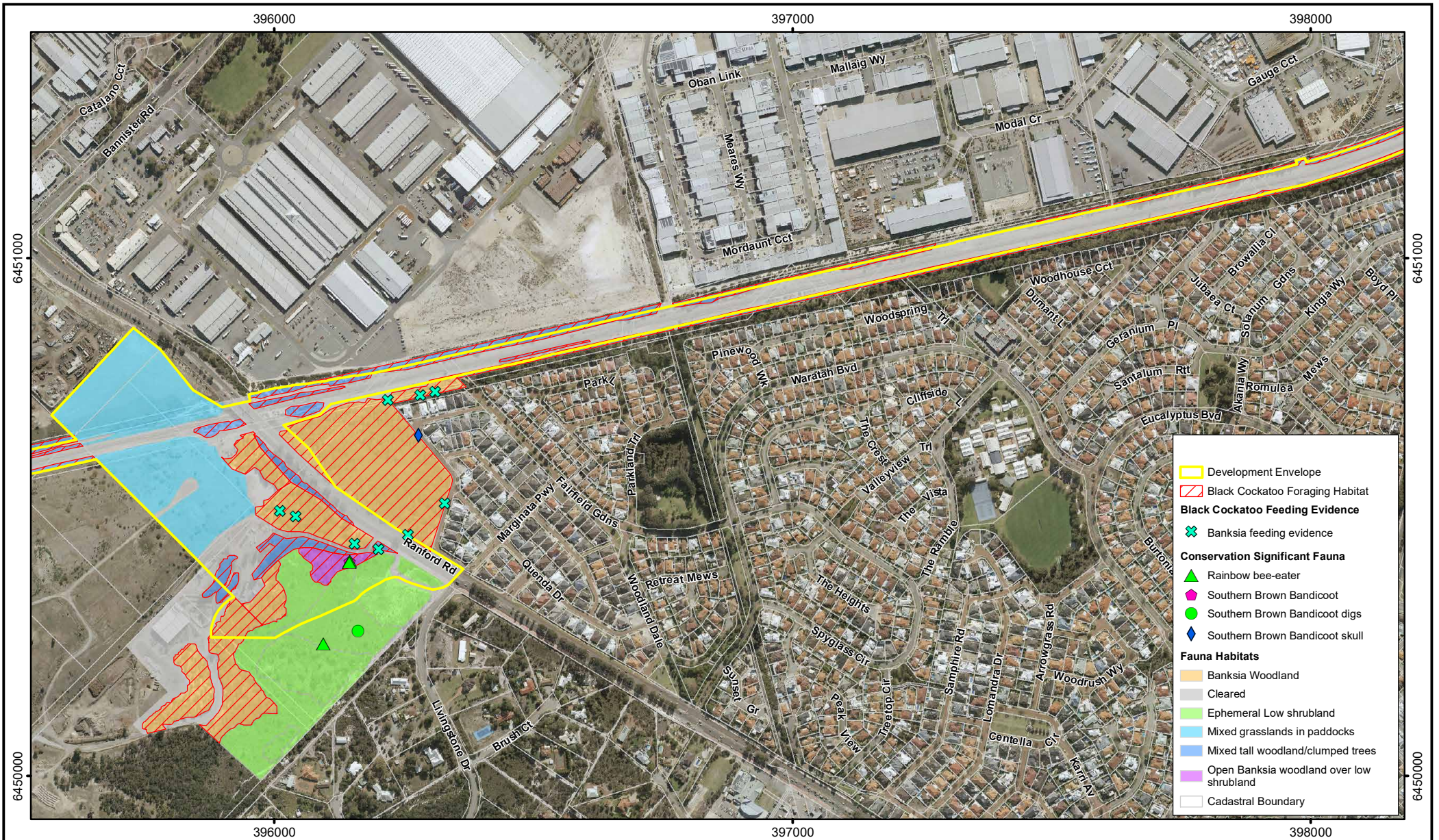
Thornlie to Cockburn Link Project

Fauna Habitat Types

Construction Environmental Management Plan

Figure:

12.4



Cadasta: Landgate
 Imagery: Landgate (May 2018)
 Fauna: GHD (Oct 2018)



0 100 200m
 Scale: 1:10,000
 MGA94 (Zone 50)
 CAD Ref: a2600_CEM_F12
 Date: April 2019
 Rev: A A4



Author: P. Zuvella AU Ref: PTA2018-001
 Drawn: CAD Resources ~ www.cadresources.com.au
 Tel: (08) 9246 3242 ~ Fax (08) 9246 3202

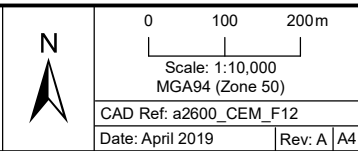
Thornlie to Cockburn Link Project
Fauna Habitat Types
 Construction Environmental Management Plan

Figure:

12.5



Cadasta: Landgate
 Imagery: Landgate (May 2018)
 Fauna: GHD (Oct 2018)



Aurora
 environmental
ASSESS • ADVISE • APPLY

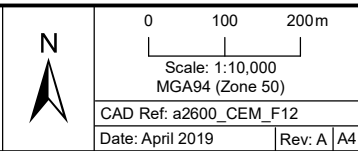
Author: P. Zuvela AU Ref: PTA2018-001
 Drawn: CAD Resources ~ www.cadresources.com.au
 Tel: (08) 9246 3242 ~ Fax (08) 9246 3202

Thornlie to Cockburn Link Project
Fauna Habitat Types
 Construction Environmental Management Plan

Figure:
12.6



Cadasta: Landgate
 Imagery: Landgate (May 2018)
 Fauna: GHD (Oct 2018)



Aurora
 environmental
ASSESS • ADVISE • APPLY

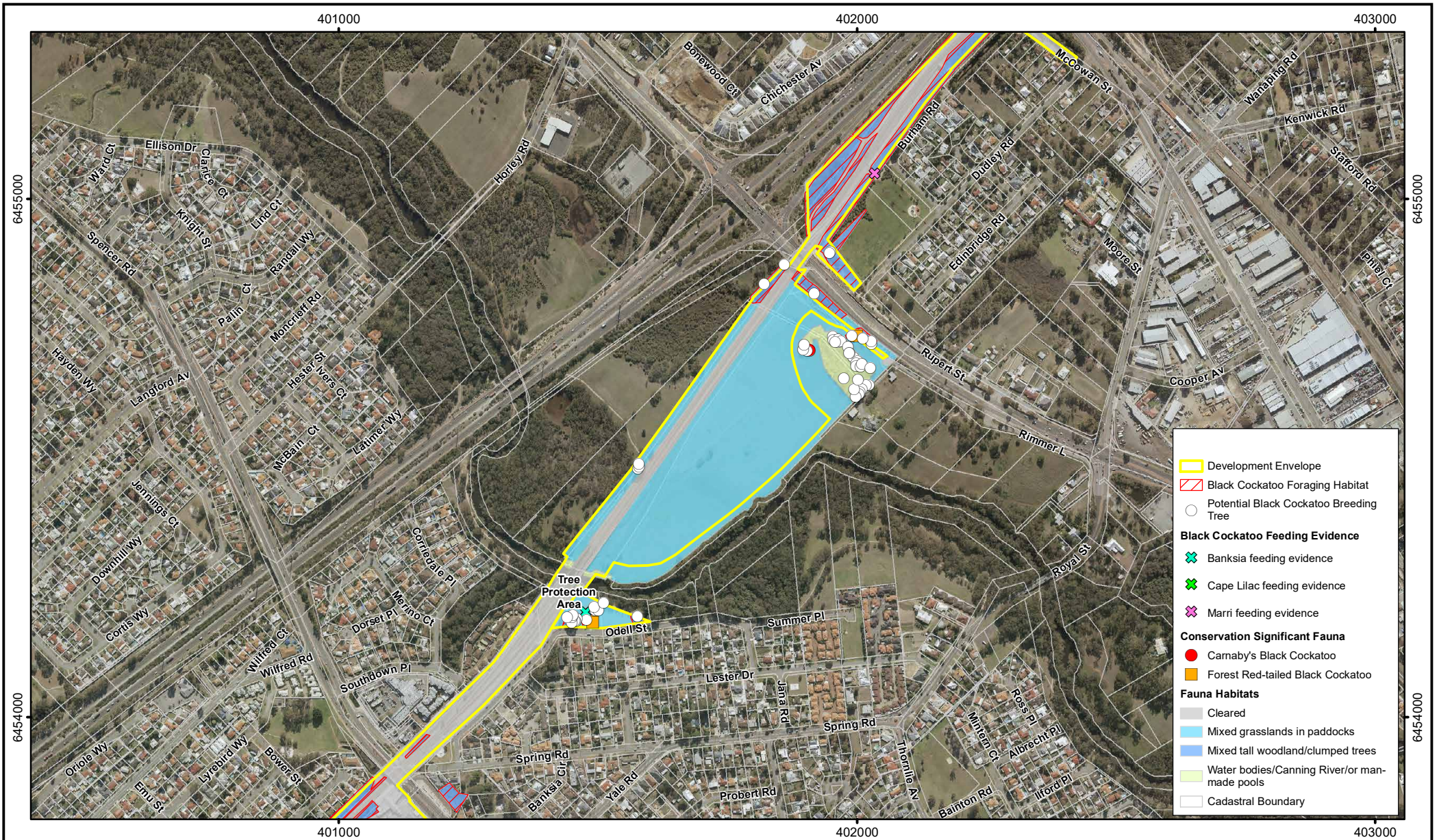
Author: P. Zuvela AU Ref: PTA2018-001
 Drawn: CAD Resources ~ www.cadresources.com.au
 Tel: (08) 9246 3242 ~ Fax (08) 9246 3202

Thornlie to Cockburn Link Project

Fauna Habitat Types

Construction Environmental Management Plan

Figure:
12.7



- Development Envelope
- Black Cockatoo Foraging Habitat
- Potential Black Cockatoo Breeding Tree
- Black Cockatoo Feeding Evidence**
- ✕ Banksia feeding evidence
- ✕ Cape Lilac feeding evidence
- ✕ Marri feeding evidence
- Conservation Significant Fauna**
- Carnaby's Black Cockatoo
- Forest Red-tailed Black Cockatoo
- Fauna Habitats**
- Cleared
- Mixed grasslands in paddocks
- Mixed tall woodland/clumped trees
- Water bodies/Canning River/or man-made pools
- Cadastral Boundary

Cadasta: Landgate
 Imagery: Landgate (May 2018)
 Fauna: GHD (Oct 2018)



0 100 200m
 Scale: 1:10,000
 MGA94 (Zone 50)
 CAD Ref: a2600_CEM_F12
 Date: April 2019 Rev: A A4

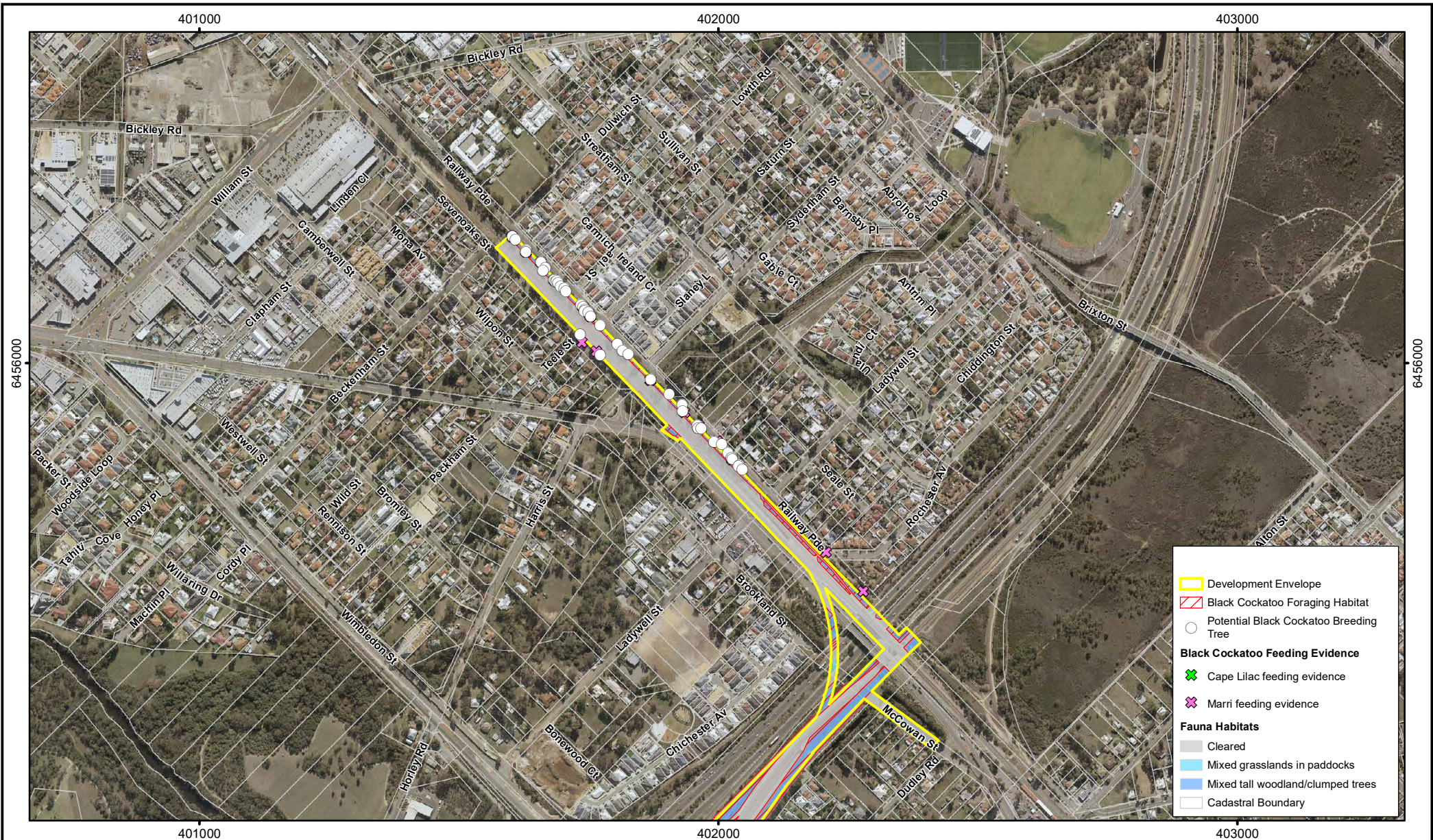


Author: P. Zuvela AU Ref: PTA2018-001
 Drawn: CAD Resources ~ www.cadresources.com.au
 Tel: (08) 9246 3242 ~ Fax (08) 9246 3202

Thornlie to Cockburn Link Project
Fauna Habitat Types
 Construction Environmental Management Plan

Figure:

12.8



Cadasta: Landgate
 Imagery: Landgate (May 2018)
 Fauna: GHD (Oct 2018)

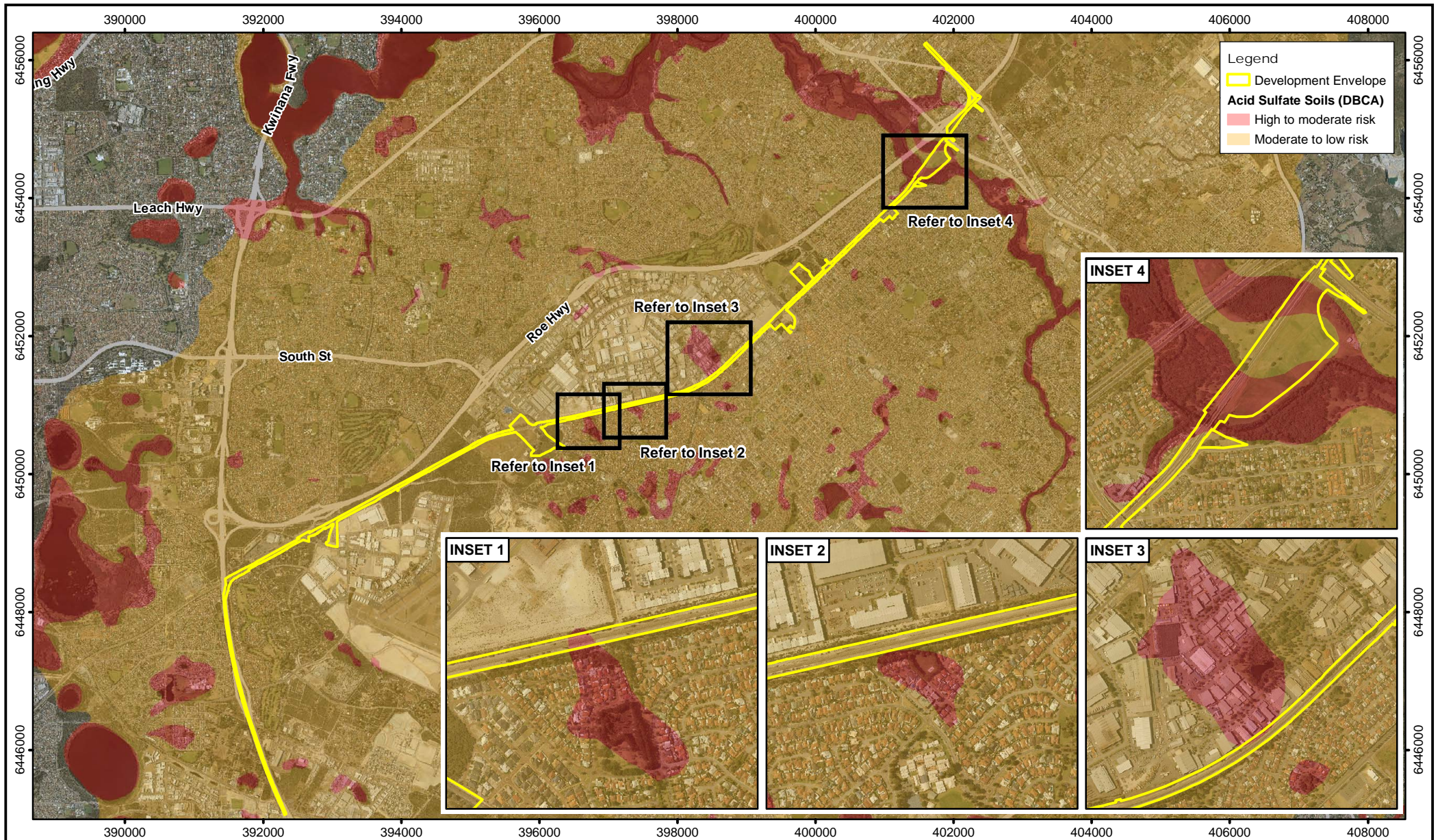
0 100 200m
 Scale: 1:10,000
 MGA94 (Zone 50)
 CAD Ref: a2600_CEM_F12
 Date: April 2019 Rev: A A4

Aurora
 environmental
ASSESS • ADVISE • APPLY

Author: P. Zuvela AU Ref: PTA2018-001
 Drawn: CAD Resources ~ www.cadresources.com.au
 Tel: (08) 9246 3242 ~ Fax (08) 9246 3202

Thornlie to Cockburn Link Project
Fauna Habitat Types
 Construction Environmental Management Plan

Figure:
12.9



ASS Risk Mapping: DBCA
Imagery: Landgate (Nov 2017)



0 0.75 1.5km
Scale: 1:75,000
MGA94 (Zone 50)
CAD Ref: a2600_CEM_F13
Date: November 2018 Rev: A A4

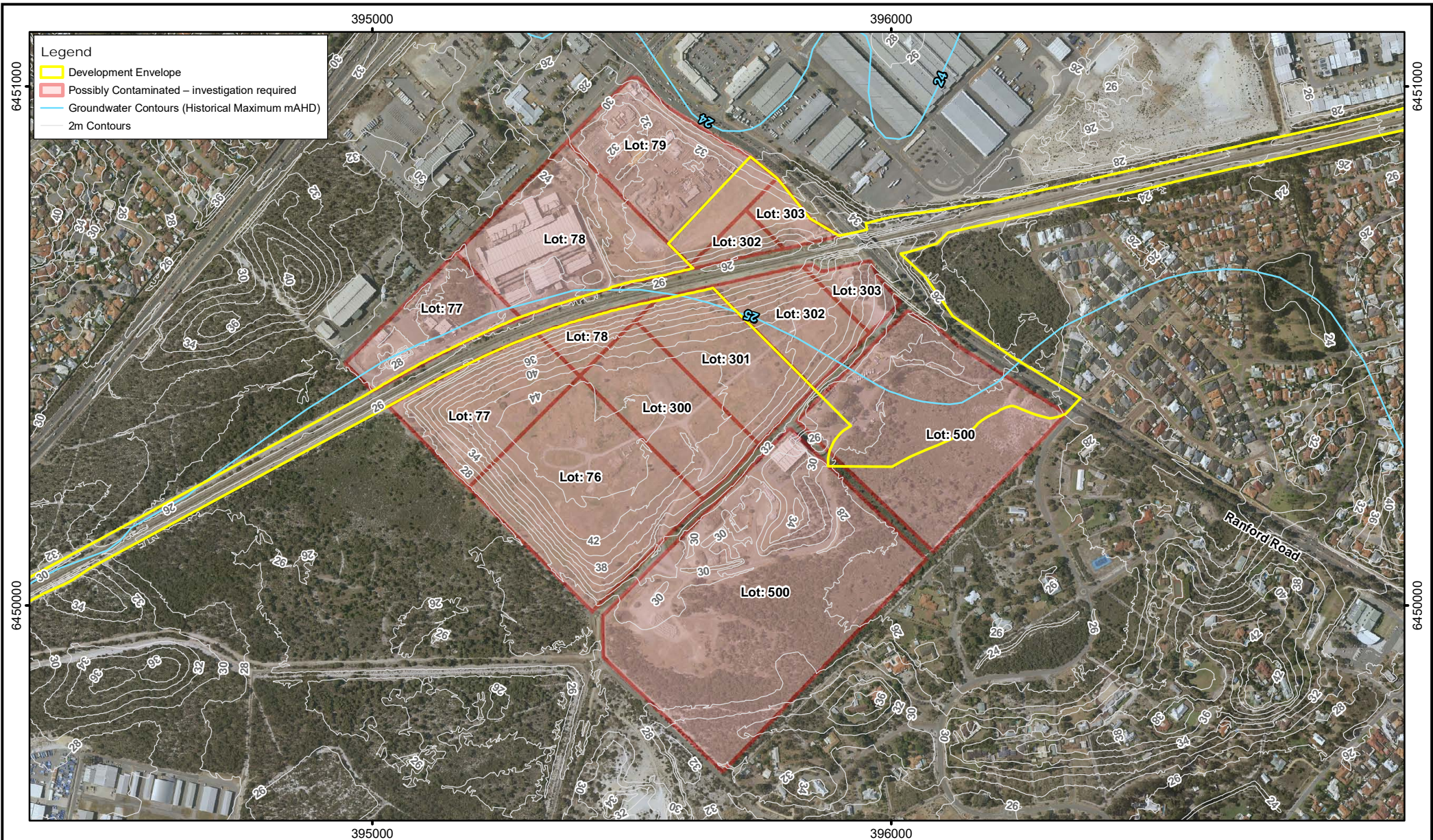


Author: P. Zuvela AU Ref: PTA2018-001
Drawn: CAD Resources ~ www.cadresources.com.au
Tel: (08) 9246 3242 ~ Fax (08) 9246 3202

Thornlie to Cockburn Link Project
ASS Risk Mapping
Construction Environmental Management Plan

Figure:

13



Contours: DWER
 Cadasta: Landgate
 Imagery: Landgate (Nov 2017)

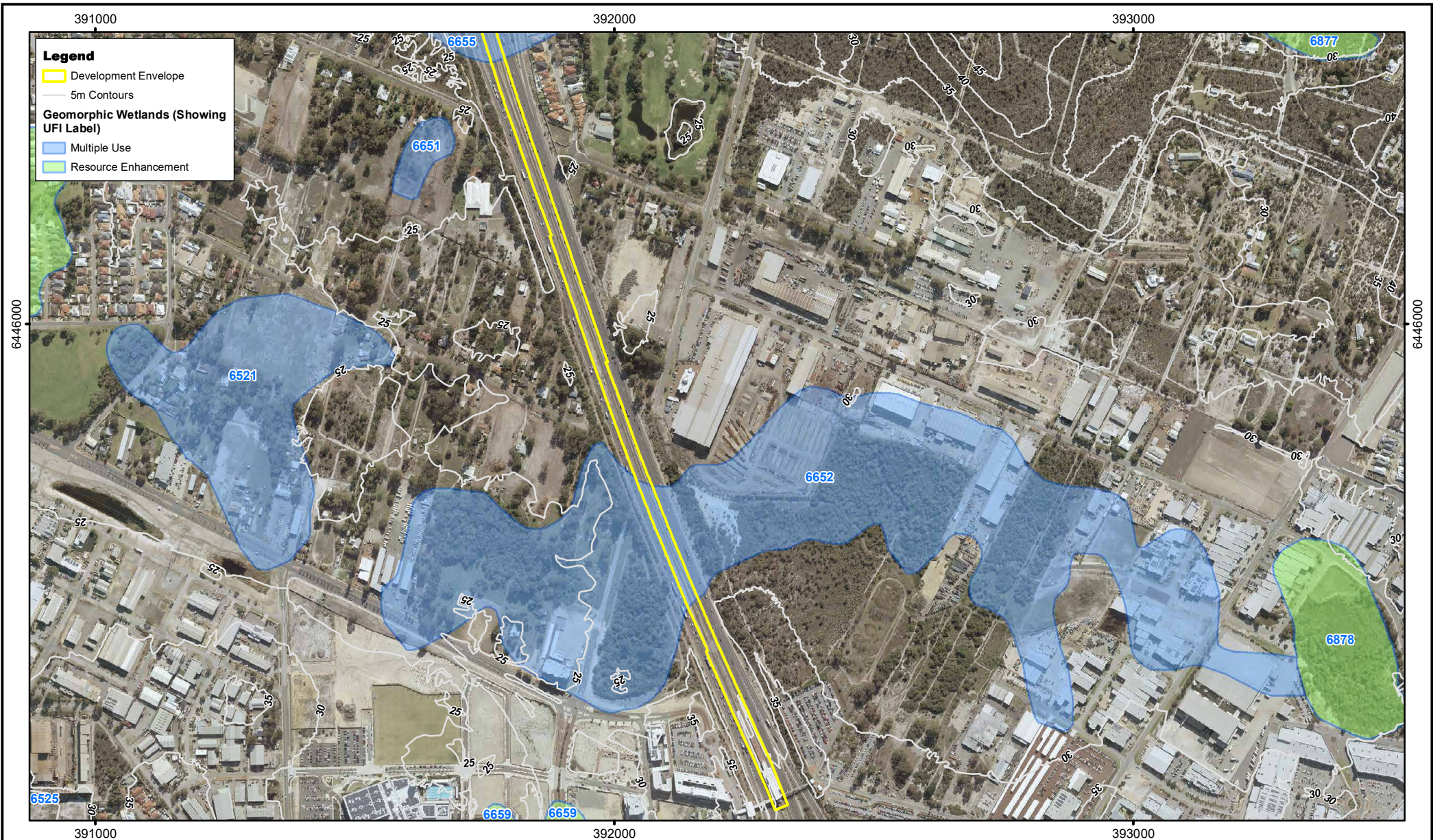


0 100 200m
 Scale: 1:10,000
 MGA94 (Zone 50)
 CAD Ref: a2600_CEM_F14
 Date: November 2018 Rev: A A4

Aurora
 environmental
 ASSESS • ADVISE • APPLY
 Author: P. Zuvela AU Ref: PTA2018-001
 Drawn: CAD Resources ~ www.cadresources.com.au
 Tel: (08) 9246 3242 ~ Fax (08) 9246 3202

Thornlie to Cockburn Link Project
Former Landfill
Construction Environmental Management Plan

Figure:
14



Legend

- Development Envelope
- 5m Contours

Geomorphic Wetlands (Showing UFI Label)

- Multiple Use
- Resource Enhancement

Cadasta: Landgate
 Imagery: Landgate (May 2018)
 PGV Wetlands: PGV Environmental (2018)
 Geomorphic Wetlands: DBCA (2018)



0 100 200m
 Scale: 1:10,000
 MGA94 (Zone 50)
 CAD Ref: a2600_CEM_F15
 Date: April 2019 Rev: A A4



Author: P. Zuvela AU Ref: PTA2018-001
 Drawn: CAD Resources ~ www.cadresources.com.au
 Tel: (08) 9246 3242 ~ Fax (08) 9246 3202

Thornlie to Cockburn Link Project
Wetland Mapping
 Construction Environmental Management Plan

Figure:
15.1



Cadasta: Landgate
 Imagery: Landgate (May 2018)
 PGV Wetlands: PGV Environmental (2018)
 Geomorphic Wetlands: DBCA (2018)



0 100 200m
 Scale: 1:10,000
 MGA94 (Zone 50)
 CAD Ref: a2600_CEM_F15
 Date: April 2019 Rev: A A4

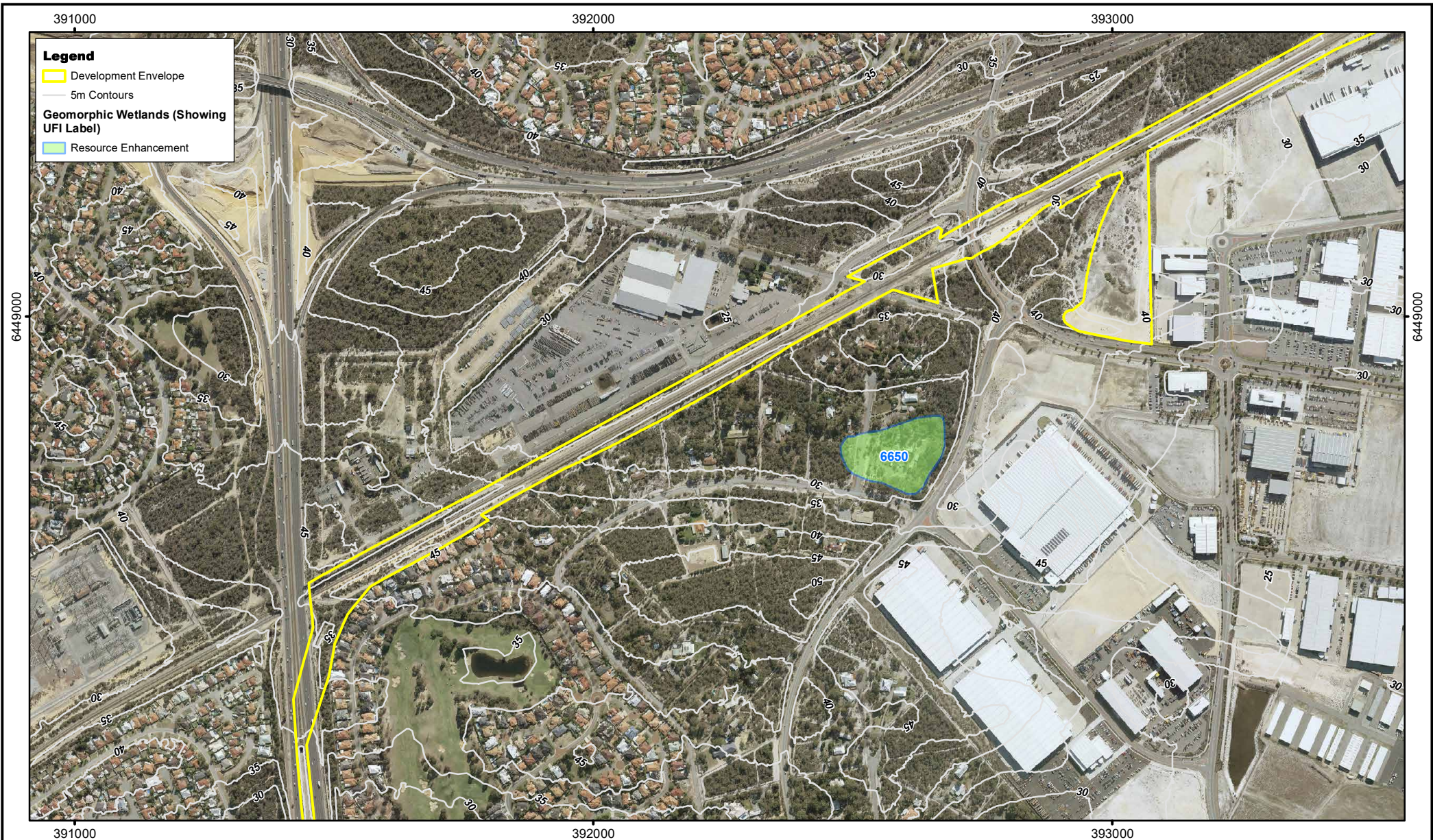


Author: P. Zuvella AU Ref: PTA2018-001
 Drawn: CAD Resources ~ www.cadresources.com.au
 Tel: (08) 9246 3242 ~ Fax (08) 9246 3202

Thornlie to Cockburn Link Project
Wetland Mapping
 Construction Environmental Management Plan

Figure:

15.2



Legend

- Development Envelope
- 5m Contours

Geomorphic Wetlands (Showing UFI Label)

- Resource Enhancement

Cadasta: Landgate
 Imagery: Landgate (May 2018)
 PGV Wetlands: PGV Environmental (2018)
 Geomorphic Wetlands: DBCA (2018)



0 100 200m

Scale: 1:10,000
 MGA94 (Zone 50)

CAD Ref: a2600_CEM_F15
 Date: April 2019

Rev: A A4

Aurora
 environmental
ASSESS • ADVISE • APPLY

Author: P. Zuvela AU Ref: PTA2018-001
 Drawn: CAD Resources ~ www.cadresources.com.au
 Tel: (08) 9246 3242 ~ Fax (08) 9246 3202

Thornlie to Cockburn Link Project

Wetland Mapping

Construction Environmental Management Plan

Figure:
15.3



6450000

6450000

394000

395000

394000

395000

Legend

- Development Envelope
- 5m Contours

Geomorphic Wetlands (Showing UFI Label)

- Resource Enhancement

Cadasta: Landgate
 Imagery: Landgate (May 2018)
 PGV Wetlands: PGV Environmental (2018)
 Geomorphic Wetlands: DBCA (2018)



0 100 200m

Scale: 1:10,000
 MGA94 (Zone 50)

CAD Ref: a2600_CEM_F15
 Date: April 2019

Rev: A A4

Aurora
 environmental
 ASSESS • ADVISE • APPLY

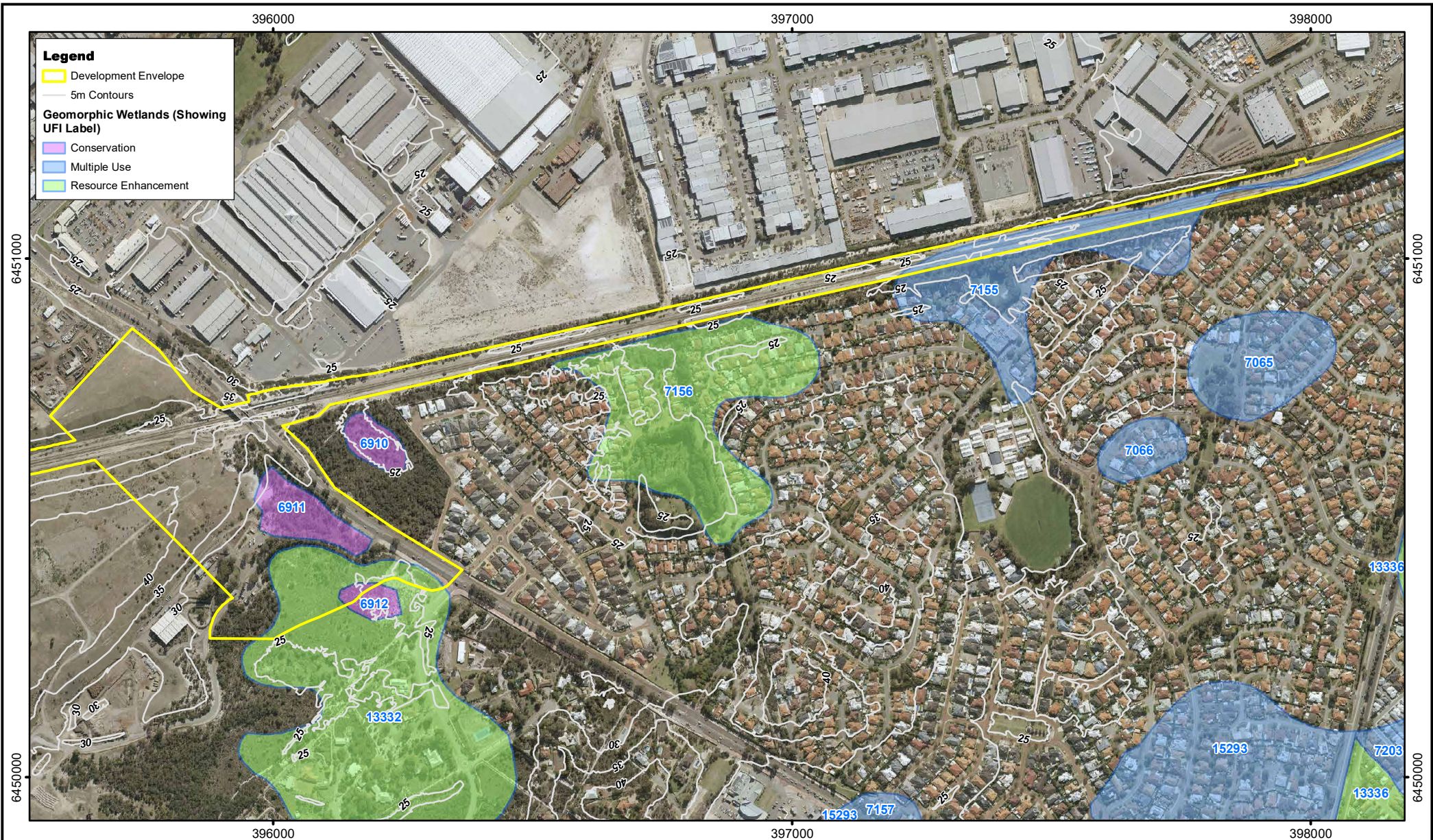
Author: P. Zuvela AU Ref: PTA2018-001
 Drawn: CAD Resources ~ www.cadresources.com.au
 Tel: (08) 9246 3242 ~ Fax (08) 9246 3202

Thornlie to Cockburn Link Project

Wetland Mapping

Construction Environmental Management Plan

Figure:
15.4



Legend

- Development Envelope
- 5m Contours

Geomorphic Wetlands (Showing UFI Label)

- Conservation
- Multiple Use
- Resource Enhancement

Cadasta: Landgate
 Imagery: Landgate (May 2018)
 PGV Wetlands: PGV Environmental (2018)
 Geomorphic Wetlands: DBCA (2018)



0 100 200m

Scale: 1:10,000
 MGA94 (Zone 50)

CAD Ref: a2600_CEM_F15
 Date: April 2019

Rev: A A4

Aurora
 environmental
ASSESS • ADVISE • APPLY

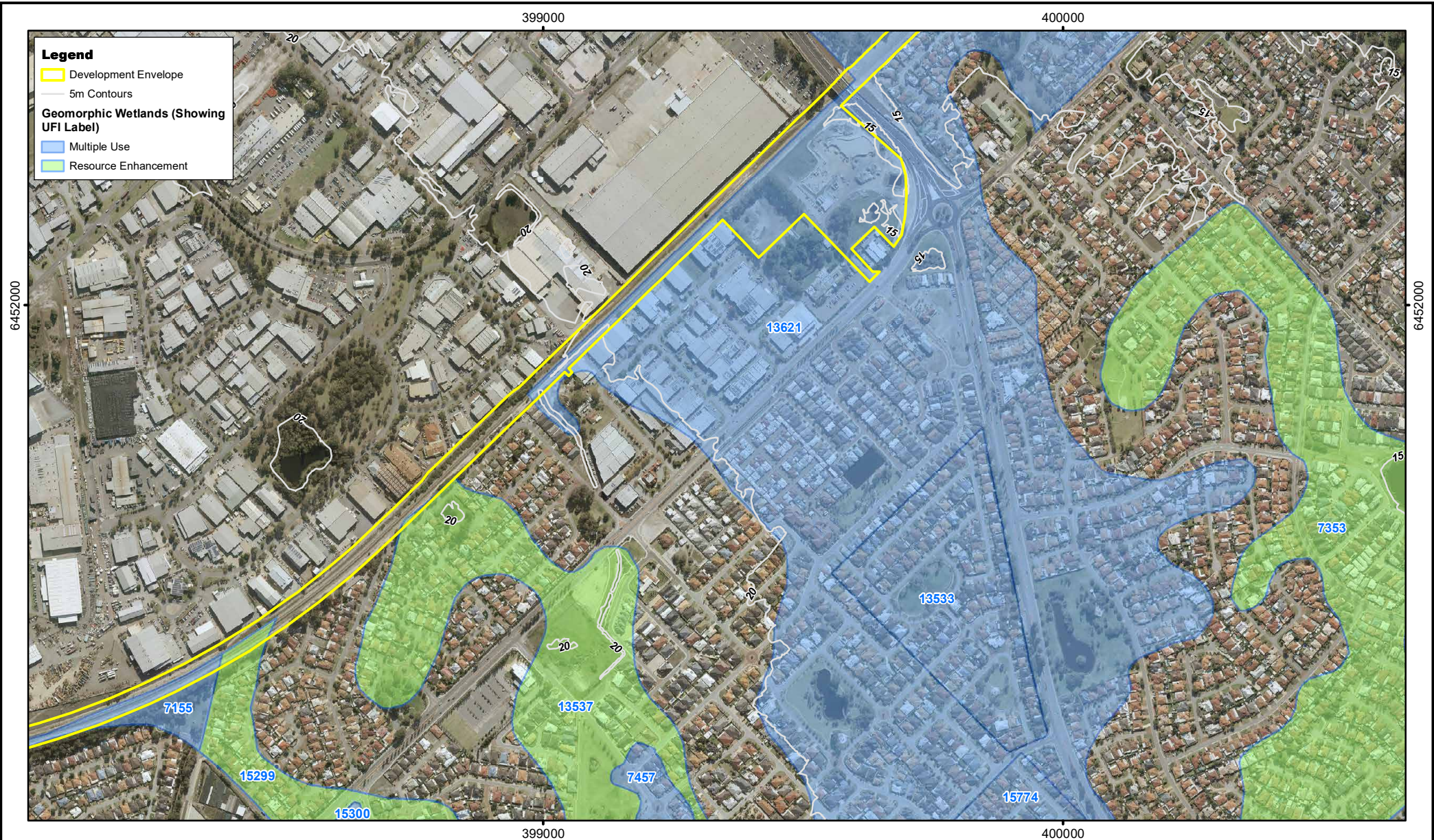
Author: P. Zuvela AU Ref: PTA2018-001
 Drawn: CAD Resources ~ www.cadresources.com.au
 Tel: (08) 9246 3242 ~ Fax (08) 9246 3202

Thornlie to Cockburn Link Project

Wetland Mapping

Construction Environmental Management Plan

Figure:
15.5



Legend

- Development Envelope
- 5m Contours

Geomorphic Wetlands (Showing UFI Label)

- Multiple Use
- Resource Enhancement

Cadasta: Landgate
 Imagery: Landgate (May 2018)
 PGV Wetlands: PGV Environmental (2018)
 Geomorphic Wetlands: DBCA (2018)



0 100 200m

Scale: 1:10,000
 MGA94 (Zone 50)

CAD Ref: a2600_CEM_F15
 Date: April 2019

Rev: A A4

Aurora
 environmental
ASSESS • ADVISE • APPLY

Author: P. Zuvela AU Ref: PTA2018-001
 Drawn: CAD Resources ~ www.cadresources.com.au
 Tel: (08) 9246 3242 ~ Fax (08) 9246 3202

Thornlie to Cockburn Link Project

Wetland Mapping

Construction Environmental Management Plan

Figure:

15.6



Legend

- Development Envelope
- 5m Contours

Geomorphic Wetlands (Showing UFI Label)

- Conservation
- Multiple Use
- Resource Enhancement

Cadasta: Landgate
 Imagery: Landgate (May 2018)
 PGV Wetlands: PGV Environmental (2018)
 Geomorphic Wetlands: DBCA (2018)



0 100 200m

Scale: 1:10,000
 MGA94 (Zone 50)

CAD Ref: a2600_CEM_F15
 Date: April 2019

Rev: A A4



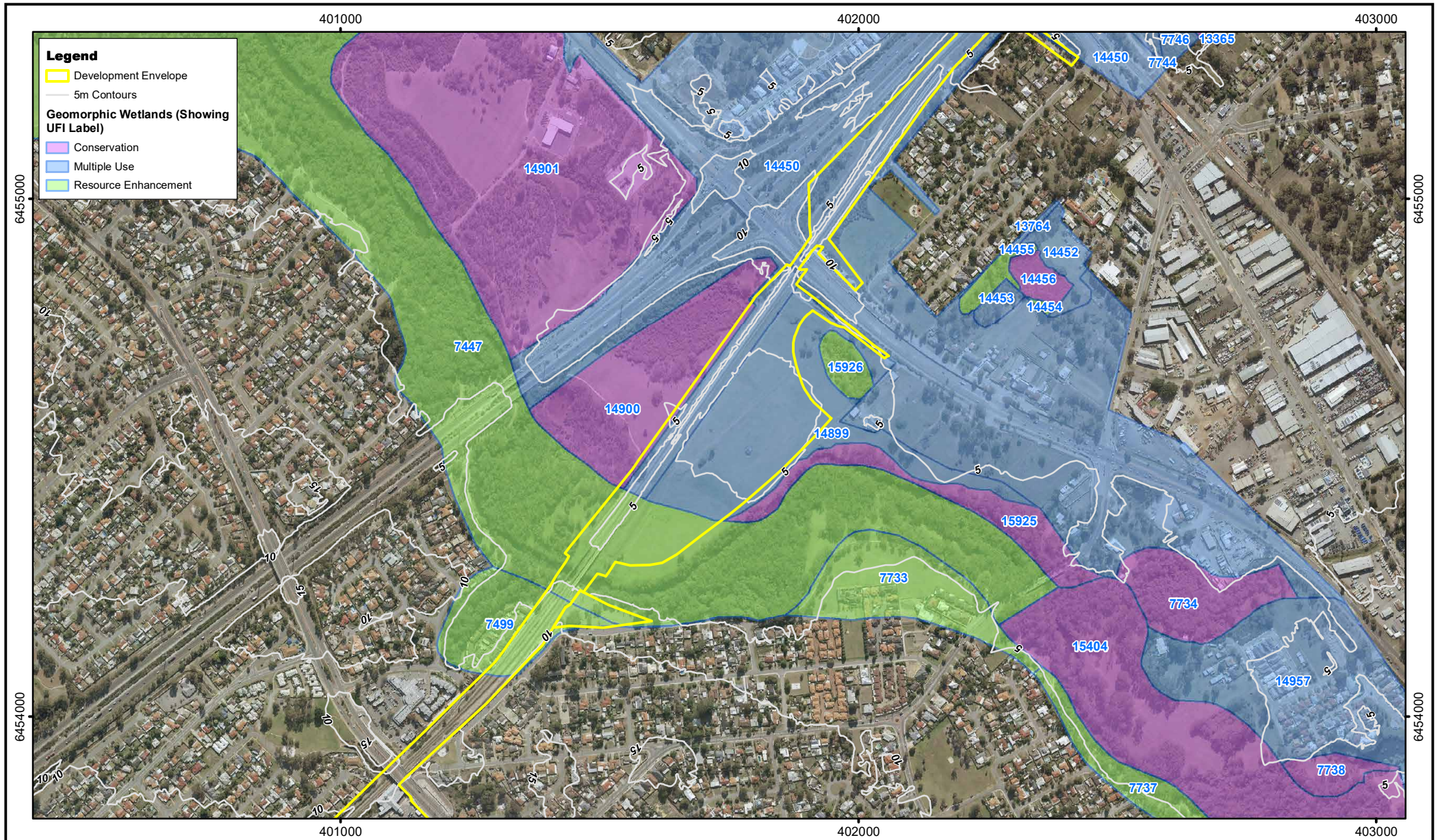
Author: P. Zuvela AU Ref: PTA2018-001
 Drawn: CAD Resources ~ www.cadresources.com.au
 Tel: (08) 9246 3242 ~ Fax (08) 9246 3202

Thornlie to Cockburn Link Project

Wetland Mapping

Construction Environmental Management Plan

Figure:
15.7



Cadasta: Landgate
 Imagery: Landgate (May 2018)
 PGV Wetlands: PGV Environmental (2018)
 Geomorphic Wetlands: DBCA (2018)

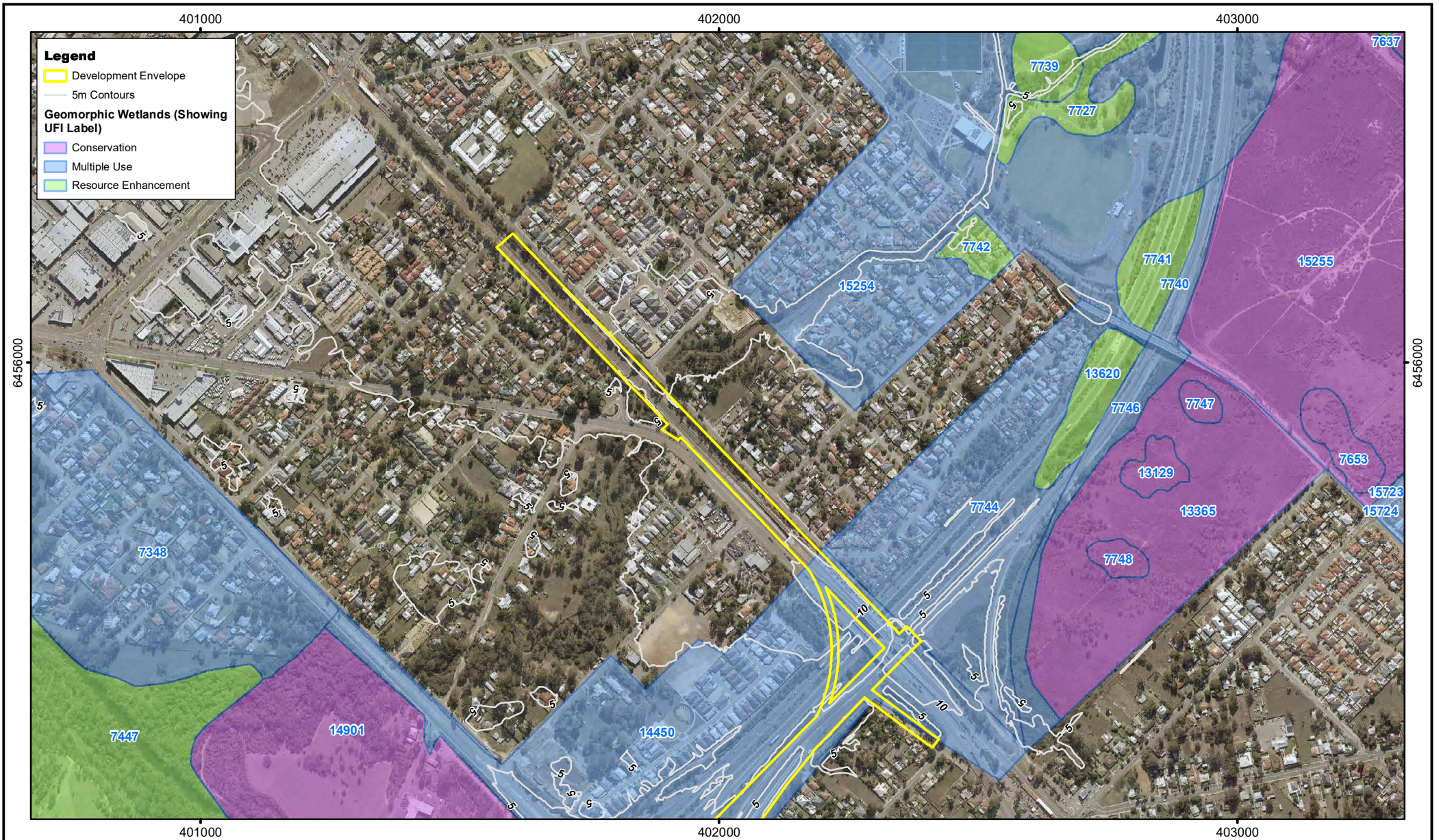
0 100 200m
 Scale: 1:10,000
 MGA94 (Zone 50)
 CAD Ref: a2600_CEM_F15
 Date: April 2019
 Rev: A A4

Aurora
 environmental
 ASSESS • ADVISE • APPLY

Author: P. Zuvela AU Ref: PTA2018-001
 Drawn: CAD Resources ~ www.cadresources.com.au
 Tel: (08) 9246 3242 ~ Fax (08) 9246 3202

Thornlie to Cockburn Link Project
Wetland Mapping
 Construction Environmental Management Plan

Figure:
15.8



Legend

- Development Envelope
- 5m Contours

Geomorphic Wetlands (Showing UFI Label)

- Conservation
- Multiple Use
- Resource Enhancement

Cadasta: Landgate
 Imagery: Landgate (May 2018)
 PGV Wetlands: PGV Environmental (2018)
 Geomorphic Wetlands: DBCA (2018)



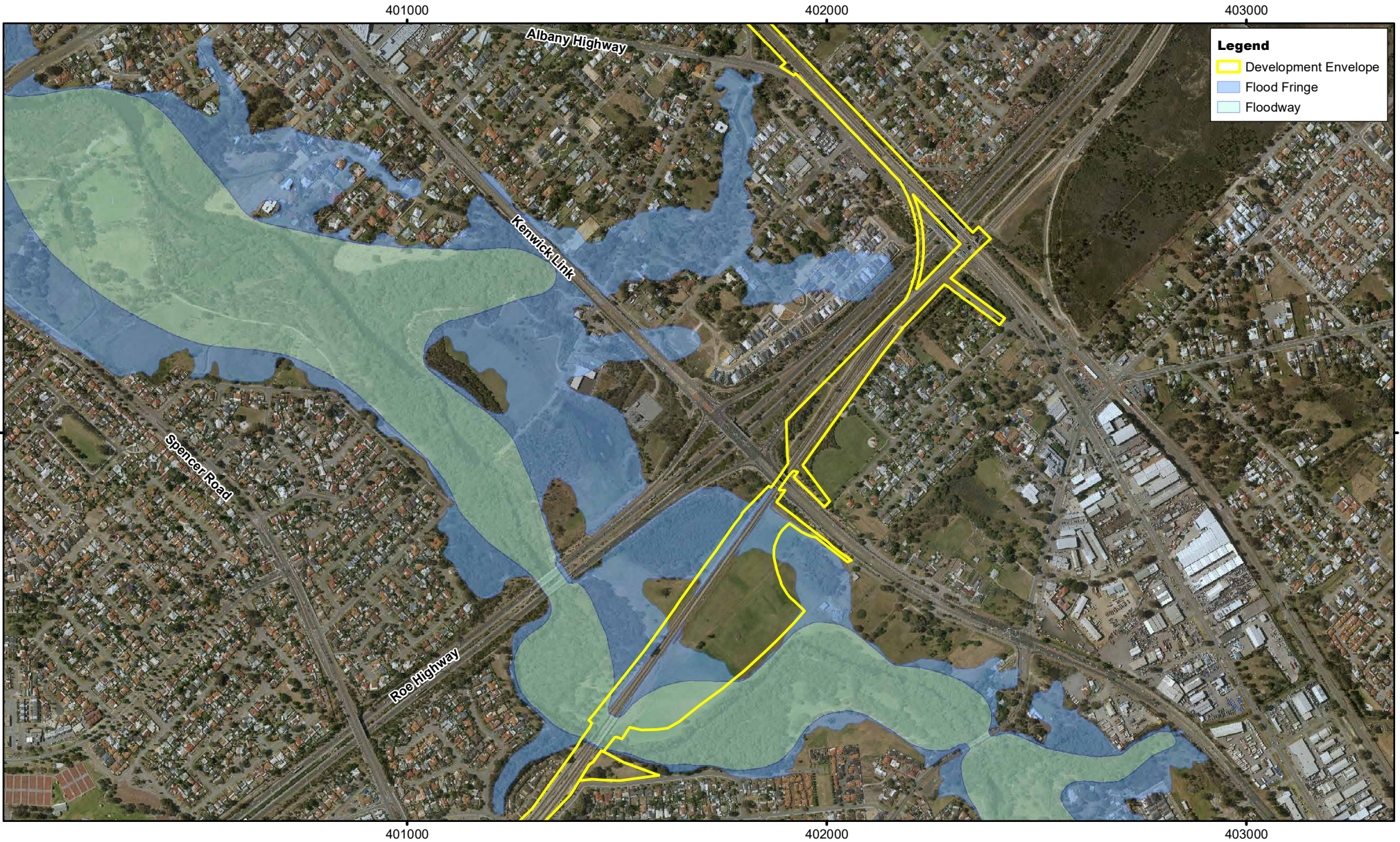
0 100 200m
 Scale: 1:10,000
 MGA94 (Zone 50)
 CAD Ref: a2600_CEM_F15
 Date: April 2019 Rev: A A4



Author: P. Zuvela AU Ref: PTA2018-001
 Drawn: CAD Resources ~ www.cadresources.com.au
 Tel: (08) 9246 3242 ~ Fax (08) 9246 3202

Thornlie to Cockburn Link Project
Wetland Mapping
 Construction Environmental Management Plan

Figure:
15.9



Cadasta: Landgate
 Floodplains: DWER
 Roads: MRWA
 Imagery: Landgate (Nov 2017)



0 125 250m
 Scale: 1:12,500
 MGA94 (Zone 50)
 CAD Ref: a2600_CEM_F16
 Date: April 2019 Rev: A A4

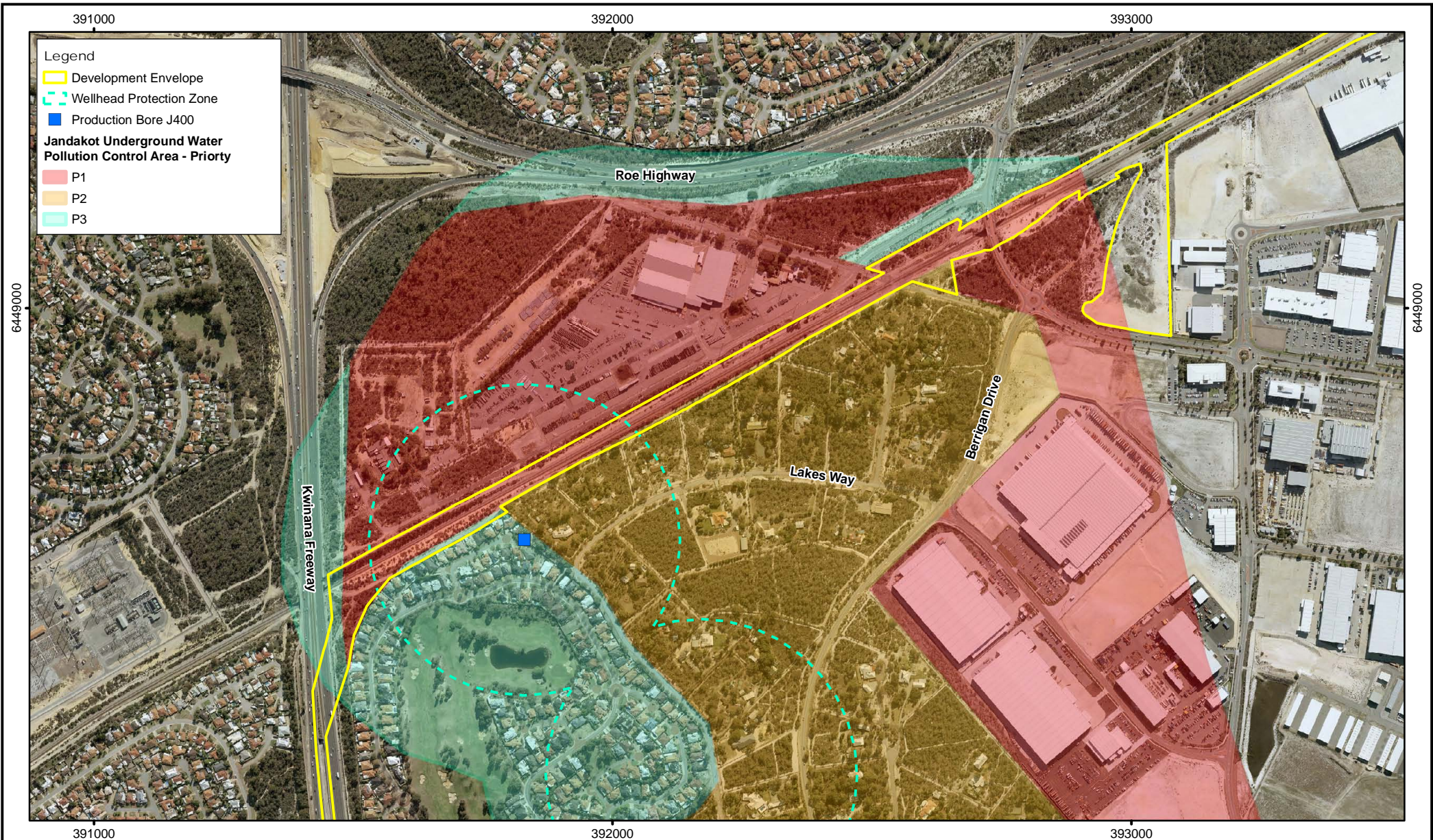


Author: P. Zuvela AU Ref: PTA2018-001
 Drawn: CAD Resources ~ www.cadresources.com.au
 Tel: (08) 9246 3242 ~ Fax (08) 9246 3202

Thornlie to Cockburn Link Project
Canning River Floodplain Mapping
Construction Environmental Management Plan

Figure:

16



Legend

- Development Envelope
- Wellhead Protection Zone
- Production Bore J400

Jandakot Underground Water Pollution Control Area - Priority

- P1
- P2
- P3

Cadasta: Landgate
 Floodplains, Bores: DWER
 Roads: MRWA
 Imagery: Landgate (May 2018)

N

0 100 200m

Scale: 1:10,000
 MGA94 (Zone 50)

CAD Ref: a2600_CEM_F17
 Date: November 2018 Rev: A A4

Aurora
 environmental
ASSESS • ADVISE • APPLY

Author: P. Zuvela AU Ref: PTA2018-001
 Drawn: CAD Resources ~ www.cadresources.com.au
 Tel: (08) 9246 3242 ~ Fax (08) 9246 3202

Thornlie to Cockburn Link Project
Jandakot Mound
Construction Environmental Management Plan

Figure:
17

APPENDIX 1

STAKEHOLDER CONSULTATION SUMMARY

STAKEHOLDER CONSULTATION SUMMARY

STAKEHOLDER	DATE / FORM	ISSUES/TOPICS RAISED	PROPONENT RESPONSE/OUTCOME
Federal Government			
DoEE	8 December 2017 / Meeting 13 April 2018 / Referral	An initial briefing on METRONET and the TCL was provided. Proposal referred to the Commonwealth under the EPBC Act.	The key outcomes from the meeting were that: <ul style="list-style-type: none"> • The PTA will refer the TCL Proposal to the EPA and DoEE with a request to trigger an accredited assessment. • The MNES that will potentially impacted by the TCL Proposal include: Threatened Species and Ecological Communities – <i>Caladenia huegelii</i>, Black Cockatoo habitat (foraging and potential breeding) and Banksia Woodlands of the Swan Coastal Plain TEC. • Discussions during the meeting influenced the design of the TCL and information included in the EPBC referral.
State Government			
EPA represented by the Chairman	4 September 2017 / Meeting	An initial briefing on METRONET was provided.	Discussions during the meeting influenced the design of the TCL and information included in this Environmental Review Document.
DWER including the EPA Services Unit	4 September 2017 / Meeting		
	8 December 2017 / Meeting	An update on the TCL Proposal was provided.	
	20 February 2018 / Meeting	A pre-referral meeting was held to discuss updates to the TCL Proposal. Specific information was requested on: Potential impacts to the Canning River floodway and flood fringe.	Discussions during the meeting influenced the design of the TCL and information included in this Environmental Review Document.

STAKEHOLDER	DATE / FORM	ISSUES/TOPICS RAISED	PROPONENT RESPONSE/OUTCOME
		Jandakot UWPCA and priority areas. Details to be included in a CEMP. Management of groundwater and surface water impacts. Mitigation measures.	
	27 June 2018 / Site Visit	Site Visit with Chairman of the EPA and officers from EPA Services. Locations visited included: <ul style="list-style-type: none"> • Karel Ave Construction laydown area • Ranford Road Station site – the EPA services unit strongly recommended review of the station layout to minimise impact to vegetation. • Nicholson Road laydown area (Tom Bateman Reserve) • Canning River Bridge Duplication • Canning River laydown Area 	Discussions during the meeting influenced the design of the TCL and information included in this Environmental Review Document. In particular, further design work was undertaken and an alternative layout identified for the station which minimised impacts to an environmentally sensitive area adjacent to Ranford Road.
	On-going	The PTA has fortnightly meetings with staff from the EPA Services Unit to discuss the progress of the Proposal's environmental assessment and any issues that arise.	Advice and guidance incorporated into this ERD.
DWER (Water Source Protection Planning Branch)	11 January 2018 / Meeting	Discussions on the TCL Proposal, and possible interactions with the Jandakot UWPCA and priority areas.	Advice and guidance incorporated into TCL planning, and included in this ERD.
	7 March 2018 / Email	Follow-up of previous meeting's actions, and provision of general advice for the Jandakot UWPCA and priority areas.	
DWER (Floodplain Management Branch)	22 March 2018 / Email	Advice and guidance provided on development on floodplains with the objective of minimising flood risk and damage.	
DWER (Urban Water Branch)	Ongoing	Advice and guidance being provided for incorporation of Water Sensitive Urban Design initiatives.	Advice and guidance to be incorporated into TCL detailed design phase.
DWER (Noise Branch)	27 March 2018 / Letter	Technical Expert Report titled Review of Draft Noise and Vibration Assessment Reports: METRONET – Yanchep Rail	Advice and guidance incorporated into TCL planning and TCL Noise and Vibration

STAKEHOLDER	DATE / FORM	ISSUES/TOPICS RAISED	PROPONENT RESPONSE/OUTCOME
		Extension and Thornlie-Cockburn Link.	Assessment Report, and to be incorporated into TCL detailed design phase.
DBCA	28 December 2017 / Meeting	Discussion of activities to be performed within the Swan River Trust Development Control Area and likely approvals required.	Advice and guidance incorporated into TCL planning, and included in this Environmental Review Document.
	16 February 2018 / Meeting	Discussion of offsets package for residual significant impacts of the TCL.	Discussions during the meeting influenced the preparation of a suitable offsets package.
DPLH	6 February 2018 / Meeting	Discussion regarding status of environmental approvals and offsets for the Jandakot Eastern Link Road.	Discussions during the meeting incorporated into TCL planning, and included in this Environmental Review Document.
Local Government			
Gosnells	Ongoing	Discussion regarding TCL interface with Local Government land. Meetings with the City of Canning to discuss the layout of Ranford Road Station and the interface with the City's Waste Transfer Facility and proposed Jandakot East Link Road.	Considered to be positive engagement.
Canning			
Cockburn			
Melville			
Industry			
Arc Infrastructure	Ongoing	Discussions regarding TCL interface with assets.	Considered to be positive engagement.
ATCO Gas			
APA Group			
BP			
Western Power			
Water Corporation	11 January 2018 /	Discussions on the TCL Proposal, and possible interactions with Water Corporation existing or proposed bores and/or	Advice and guidance incorporated into TCL planning, and included in this Environmental

STAKEHOLDER	DATE / FORM	ISSUES/TOPICS RAISED	PROPONENT RESPONSE/OUTCOME
	Meeting	wellhead protection zones.	Review Document.
Traditional Owners			
SWALSC and Whadjuk people	18 September 2017 and 4 October 2017 / Consultation and inspection of the development envelope.	Whadjuk representatives have given their conditional approval, indicating that disturbance to aboriginal heritage sites will be minimal and that the proposed action will be beneficial to the general community.	Considered to be positive engagement.
	5 October 2018 / Meeting	Briefed SWALSC on METRONET and the draft METRONET Aboriginal Engagement Strategy (MAES).	<ul style="list-style-type: none"> • Book in half day 'workshop' to collate comments on MAES, and then escalate comments to Wayne Nannup and board of SWALSC. • Seek general acceptance/ endorsement of MAES intent noting an annual review will be undertaken. • Obtain access to Whadjuk Working Party to present MAES.
Community			
Freight and Logistics Council	31 August 2017 / Presentation	Thornlie-Cockburn Link interface with freight. No issues raised.	Considered to be positive engagement.
Urban Bushland Council WA Inc	7 December 2017 / Meeting	Discussion on the TCL Proposal.	Expressed concern but were appreciative of early consultation.
	14 February 2018 / Meeting	The group identified that there is very sensitive vegetation in the area, and that the Proposal will definitely have public interest and should be formally assessed by the EPA. Queries were raised around the low density nature of housing in this area, what is the rationale for this Proposal.	PTA response was the area is currently under serviced by public transport, and would take pressure off the roads and the Mandurah railway line. The PTA is committed to undertaking additional consultation with the Urban Bushland Council to inform detailed design for

STAKEHOLDER	DATE / FORM	ISSUES/TOPICS RAISED	PROPONENT RESPONSE/OUTCOME
			the TCL Proposal.
	22 November 2018	<p>The group was generally supportive of the changes made to the development envelope since the initial referral to avoid or minimise impacts to environmentally sensitive areas.</p> <p>Concerns were raised as to the location of the proposed Ranford Road Station being partially within a Bush Forever Site rather than an already developed area.</p>	The PTA will continue consultation with the Urban Bushland Council throughout the EPA's assessment of the Proposal and during construction.
South East Regional Centre for Urban Landcare (SERCUL)	10 October 2018 / Meeting	Discussion on the potential environmental impacts of the TCL Proposal and potential offset sites in the local region. SERCUL work with a number of local landcare/community groups and local governments on delivery of conservation/restoration projects in the south-east metropolitan region.	The PTA will continue consultation with SERCUL throughout the EPA assessment process and construction phase, including the development of the Offsets Strategy for the TCL Proposal.
Friends of Ken Hurst Park represented by three members (including member of the Wildflower Society of WA).	7 February 2018 / Meeting	Discussion on the TCL Proposal. The group's key concerns included potential impacts on their vehicle access to the park, the management of indirect impacts associated with dieback and construction activities, and the fragmentation of the park through the installation of secure fencing alongside the railway. Note: Eddy Wajon also a member of the Wildflower Society of WA.	The PTA will ensure that access to Ken Hurst Park is not impacted by the TCL Proposal. The PTA also agreed to have ongoing consultation with the group during the EPA referral process and construction phase.
	2 October 2018 / Meeting	Discussion of the status of environmental approvals for the Proposal, opportunities to improve accessibility through Ken Hurst Park and to involve the local community in landscaping/planting and potential offsets.	The PTA committed to ongoing consultation during the EPA referral process and construction phase.
	11 March 2019 / Meeting		
Adjoining residents	21 November 2017 / Letter	Invite to attend a noise and vibration community workshop.	Owners of 41 properties registered to attend.
	2 December 2017 / Community	Noise/vibration early mitigation recommendations.	65 property owners attended representing 37 properties. Concerns were raised around

STAKEHOLDER	DATE / FORM	ISSUES/TOPICS RAISED	PROPONENT RESPONSE/OUTCOME
	workshop		existing noise and vibration, construction and proposed train operations.
	5 December 2017 / Community workshop	Noise/vibration early mitigation recommendations.	Overall the groups were supportive of early recommendations for noise and vibration mitigation measures. A full description of the consultation is provided in the SLR (2018) report.
	6 December 2017 / Email	Follow-up email to reissue survey form to 65 property owners whom attended the workshops.	13 survey forms completed and returned (including the ones from the workshops).
	22 December 2017 / Email	Second follow-up email to reissue survey form to 65 property owners whom attended the workshops.	Queries raised in feedback forms were responded to directly by the METRONET Office.
	22 December 2017 / Letter	Letter sent via registered post to property owners whom did not attend the community workshop. 143 property owners share a rail reserve boundary.	27 survey forms completed and returned. As per the workshop, concerns were raised about the Proposal, however there was general support for the Proposal and mitigation measures proposed. Queries raised in feedback forms were responded to directly by the METRONET Office.