

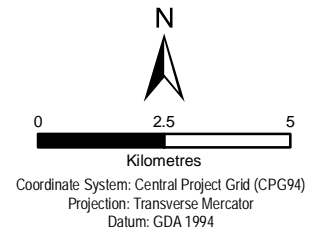
BHP BILLITON IRON ORE

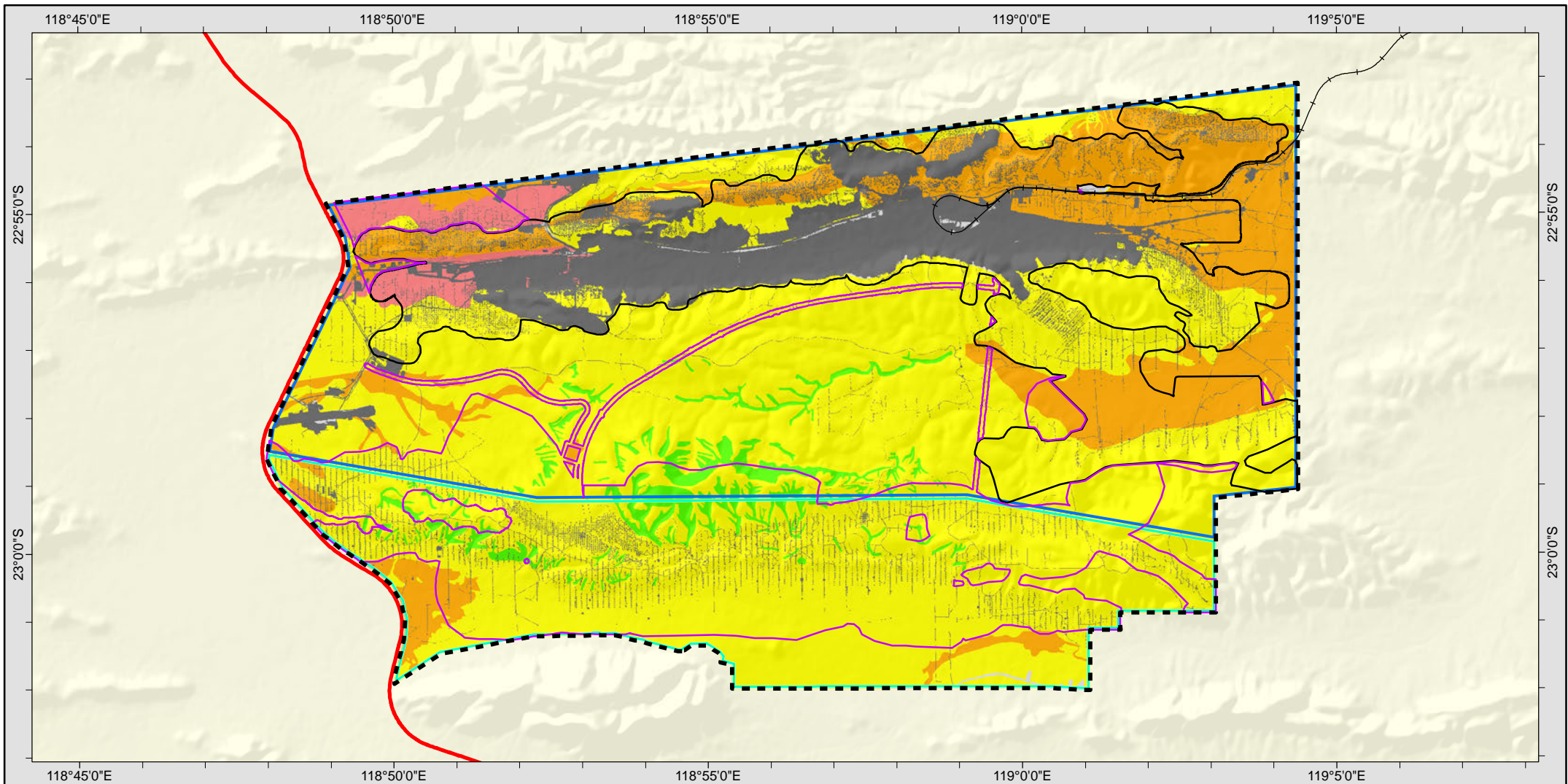
**MINING AREA C - SOUTHERN FLANK**  
New Modified Footprint

Scale @ A4: 1:150,000	Prepared: M. LYTTLE	Project No: A780/076 REV A
Date: 31/08/2017	Checked: S. TRINDER	Figure: 1
Revision: Rev A	Reviewed: S. WILLIAMSON	

- Proposed Mining Area C Development Envelope
- Approved Mining Area C (Northern Flank) Development Envelope
- Additional Development Envelope
- Mining Area C EMP Rev 6 Impact Assessment Area
- Indicative Additional Impact Assessment Area
- New Modified Indicative Additional Impact Assessment Area
- Great Northern Highway
- BHP Billiton Rail
- Rio Tinto Rail

Liability  
BHPBIO does not warrant that this map is free from errors or omissions. BHPBIO shall not be in any way liable for loss, damage or injury to the user of this map or any other person or organisation consequent upon or incidental to the existence of errors or omissions on this map. This map has been compiled with data from numerous sources with different levels of reliability and is considered by the authors to be fit for its intended purpose at the time of publication. However, it should be noted that the information shown may be subject to change and ultimately, map users are required to determine the suitability of use for any particular purpose.





BHP BILLITON IRON ORE

**MINING AREA C - SOUTHERN FLANK**  
Vegetation Condition within the Proposed Mining Area C Development Envelope

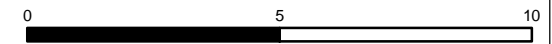
Scale @ A4: 1:150,000	Prepared: M. LYTTLE	Project No: A780/027 REV C
Date: 8/11/2017	Checked: B. BARNETT	Figure: 15
Revision: Rev B	Reviewed: S. WILLIAMSON	

- Proposed Mining Area C Development Envelope
- Approved Mining Area C (Northern Flank) Development Envelope
- Additional Development Envelope
- Mining Area C EMP Rev 6 Impact Assessment Area
- New Modified Indicative Additional Impact Assessment Area

**Vegetation Condition**

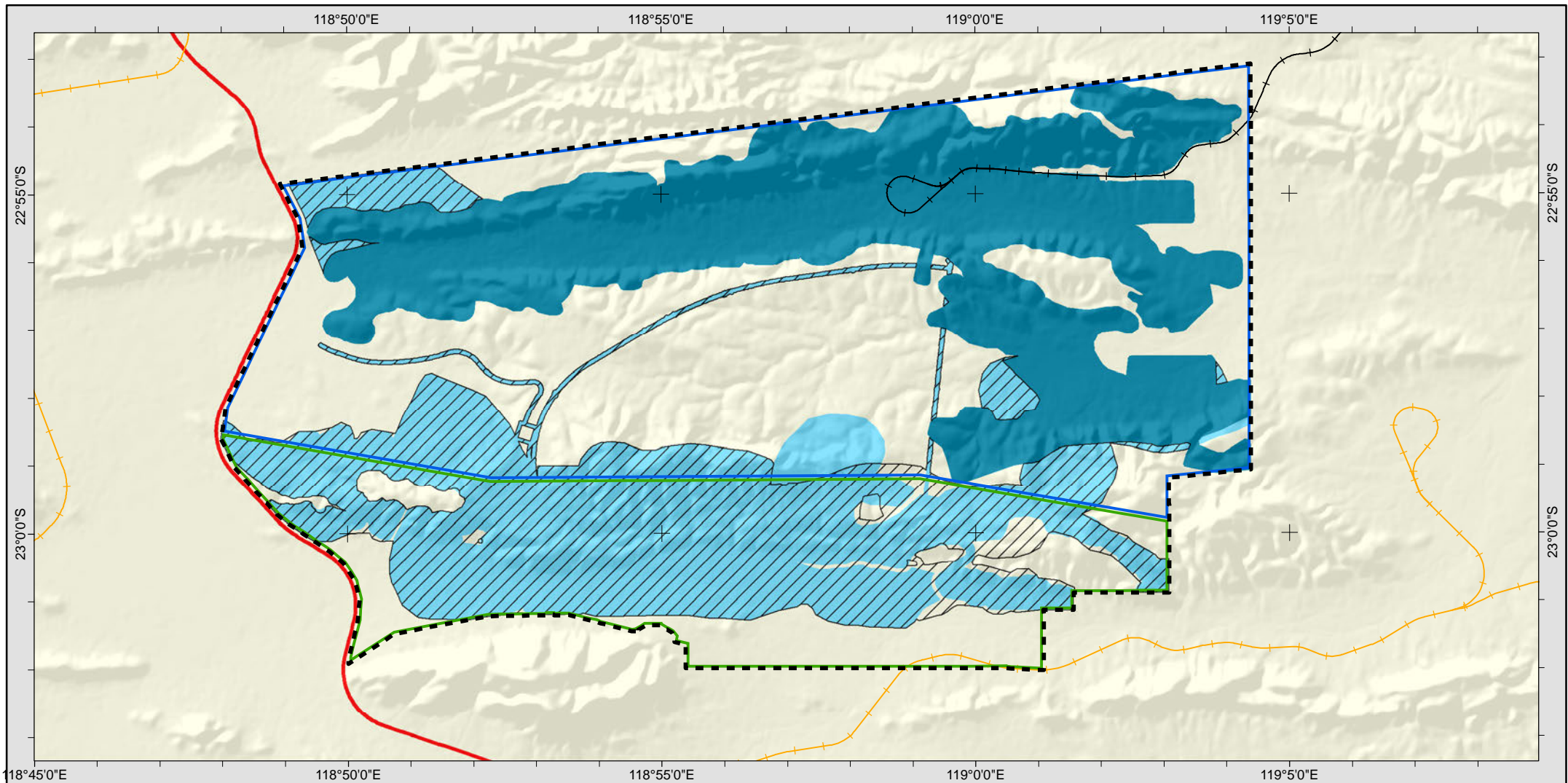
- Excellent
- Very Good
- Good
- Poor
- Not mapped
- Cleared
- Great Northern Highway
- BHP Billiton Rail

Liability  
BHPBilliton does not warrant that this map is free from errors or omissions. BHPBilliton shall not be in any way liable for loss, damage or injury to the user of this map or any other person or organisation consequent upon or incidental to the existence of errors or omissions on this map. This map has been compiled with data from numerous sources with different levels of reliability and is considered by the authors to be fit for its intended purpose at the time of publication. However, it should be noted that the information shown may be subject to change and ultimately, map users are required to determine the suitability of use for any particular purpose.



Kilometres  
Coordinate System: Central Project Grid (CPG94)  
Projection: Transverse Mercator  
Datum: GDA 1994





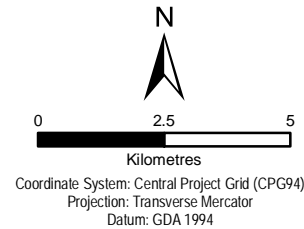
BHP BILLITON IRON ORE

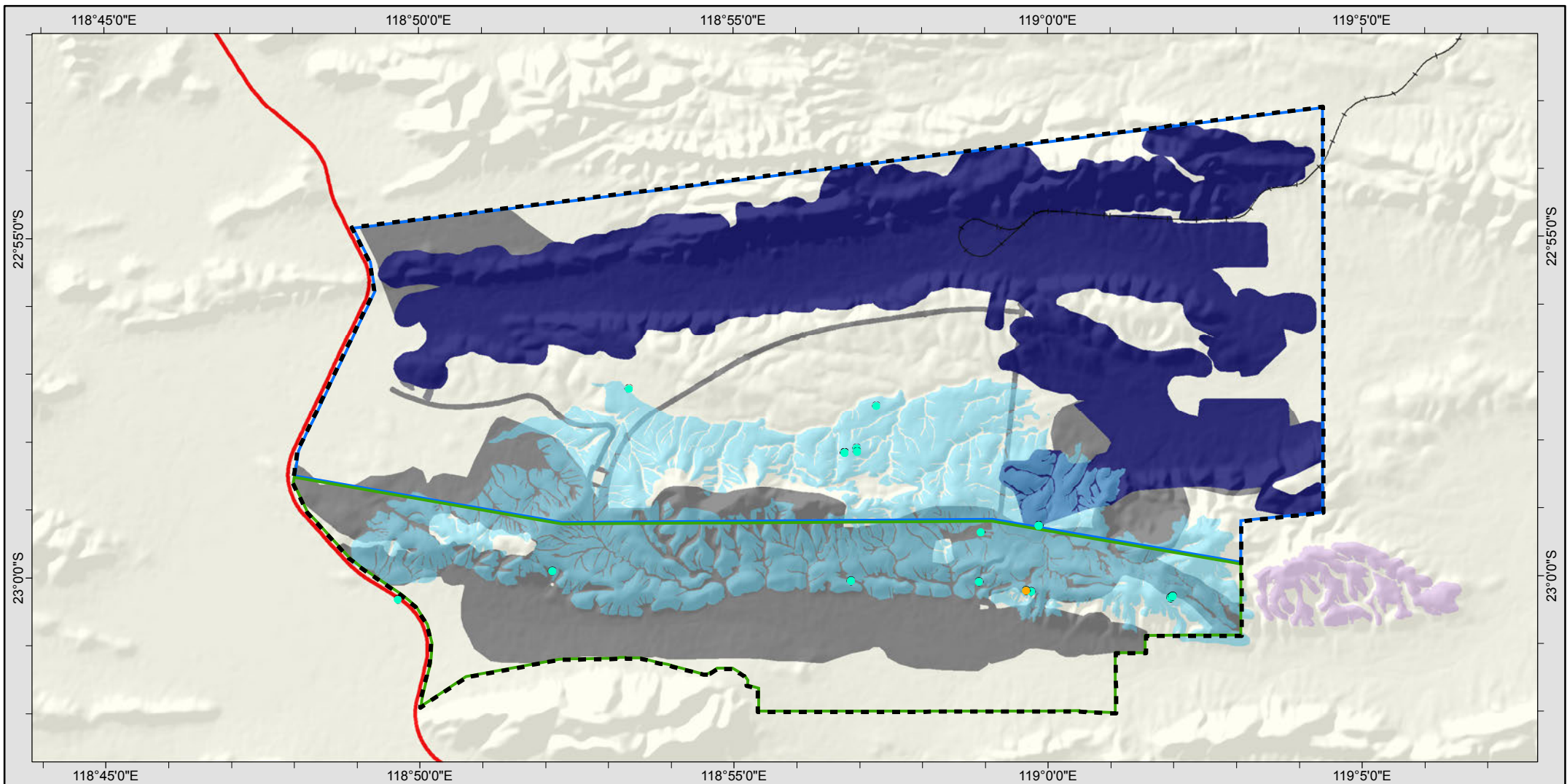
**MINING AREA C - SOUTHERN FLANK**  
New Modified Footprint

Scale @ A4: 1:150,000	Prepared: M. LYTTLE	Project No: A780/075 REV A
Date: 31/08/2017	Checked: S. TRINDER	Figure: 2
Revision: Rev A	Reviewed: S. WILLIAMSON	

- Proposed Mining Area C Development Envelope
- Approved Mining Area C (Northern Flank) Development Envelope
- Additional Development Envelope
- Mining Area C EMP Rev 6 Impact Assessment Area
- Modified Indicative Additional Impact Assessment Area
- New Modified Indicative Additional Impact Assessment Area
- Great Northern Highway
- BHP Billiton Rail
- Rio Tinto Rail

Liability  
BHPBIO does not warrant that this map is free from errors or omissions. BHPBIO shall not be in any way liable for loss, damage or injury to the user of this map or any other person or organisation consequent upon or incidental to the existence of errors or omissions on this map. This map has been compiled with data from numerous sources with different levels of reliability and is considered by the authors to be fit for its intended purpose at the time of publication. However, it should be noted that the information shown may be subject to change and ultimately, map users are required to determine the suitability of use for any particular purpose.





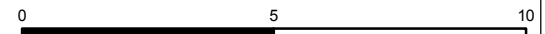
**Spatial Data - Business Development**  
BHP BILLITON IRON ORE

**MINING AREA C - SOUTHERN FLANK**  
Inferred Extent of Habitat for *Antichiropus* 'DIP007'

Scale @ A4: 1:150,000	Prepared: M. LYTTLE	Project No: A780/043 REV C
Date: 9/11/2017	Checked: B. BARNETT	Figure: 27
Revision: Rev C	Reviewed: S. WILLIAMSON	

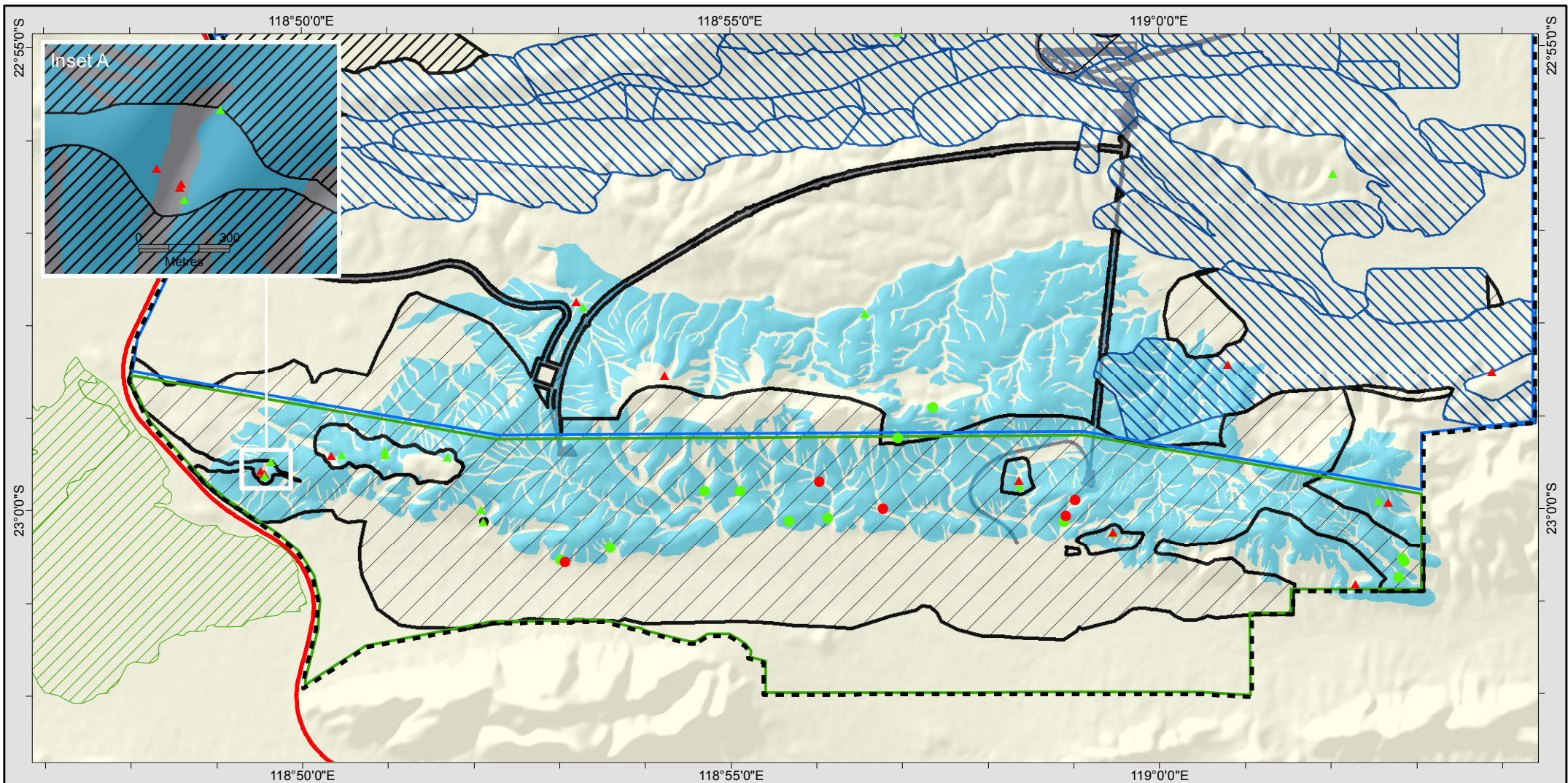
- Proposed Mining Area C Development Envelope
- Approved Mining Area C (Northern Flank) Development Envelope
- Additional Development Envelope
- Mining Area C EMP Rev 6 Impact Assessment Area
- New Modified Indicative Additional Impact Assessment Area
- Inferred *Antichiropus* 'DIP007' Habitat
- Inferred *Antichiropus* 'DIP007' Habitat (Unverified)
- Antichiropus* 'DIP007' indetermined
- Antichiropus* 'DIP007' confirmed
- BHP Billiton Rail
- Great Northern Highway

Liability  
BHPBIO does not warrant that this map is free from errors or omissions. BHPBIO shall not be in any way liable for loss, damage or injury to the user of this map or any other person or organisation consequent upon or incidental to the existence of errors or omissions on this map. This map has been compiled with data from numerous sources with different levels of reliability and is considered by the authors to be fit for its intended purpose at the time of publication. However, it should be noted that the information shown may be subject to change and ultimately, map users are required to determine the suitability of use for any particular purpose.



Kilometres  
Coordinate System: Central Project Grid (CPG94)  
Projection: Transverse Mercator  
Datum: GDA 1994





BHP BILLITON IRON ORE

**MINING AREA C - SOUTHERN FLANK**  
 Impacts to Ghost Bat Caves and  
*Antichiropus* 'DIP007' Habitat Following Mitigation

Scale @ A4: 1:110,000	Prepared: J. ROBERTS	Project No: A780/088 REV D
Date: 26/10/2017	Checked: B. BARNETT	Figure: 29
Revision: Rev C	Reviewed: S. WILLIAMSON	

- Proposed Mining Area C Development Envelope
- Approved Mining Area C (Northern Flank) Development Envelope
- Additional Development Envelope
- Mining Area C EMP Rev 6 Impact Assessment Area
- Inferred *Antichiropus* 'DIP007' Habitat
- Priority Ecological Community

**Bat caves in proposed impact areas**

- High
- Low

**Bat caves outside proposed impact areas**

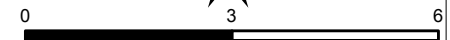
- High
- Low

BHP Billiton Rail

Great Northern Highway

New Modified Indicative Additional Impact Assessment Area

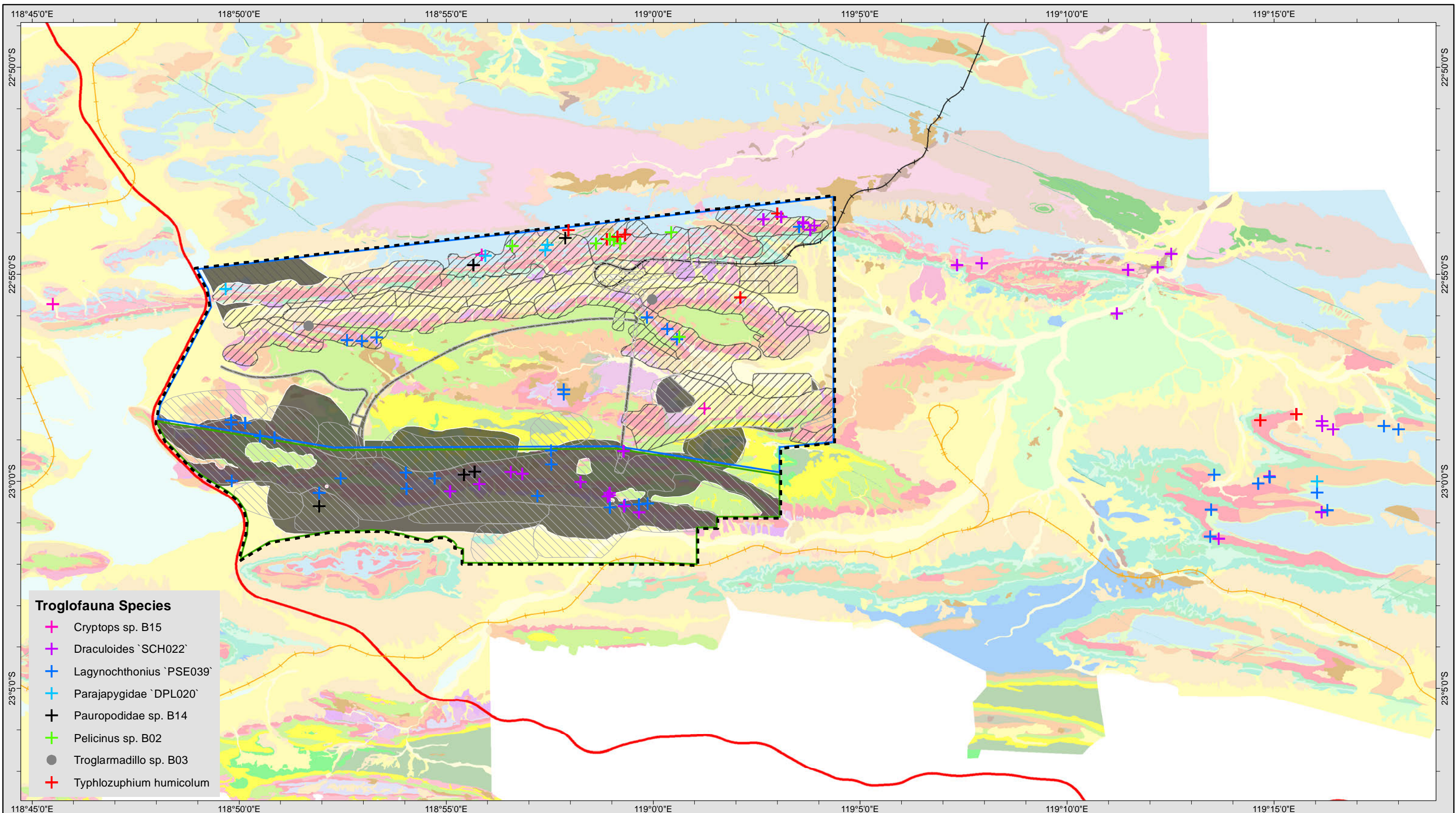
Liability  
 BHPBilliton does not warrant that this map is free from errors or omissions. BHPBilliton shall not be in any way liable for loss, damage or injury to the user of this map or any other person or organisation consequent upon or incidental to the existence of errors or omissions on this map. This map has been compiled with data from numerous sources with different levels of reliability and is considered by the authors to be fit for its intended purpose at the time of publication. However, it should be noted that the information shown may be subject to change and ultimately, map users are required to determine the suitability of use for any particular purpose.



Kilometers

Coordinate System: Central Project Grid (CPG94)  
 Projection: Transverse Mercator  
 Datum: GDA 1994





- Troglofauna Species**
- ✚ Cryptops sp. B15
  - ✚ Draculoides `SCH022`
  - ✚ Lagynochthonius `PSE039`
  - ✚ Parajapygidae `DPL020`
  - ✚ Pauropodidae sp. B14
  - ✚ Pelicinus sp. B02
  - Troglarmadillo sp. B03
  - ✚ Typhlozuphium humiculum

**Spatial Data - Business Development**  
BHP BILLITON IRON ORE

**MINING AREA C - SOUTHERN FLANK**  
Widespread surrogate troglofauna in the Proposed Mining Area C Development Envelope

Scale @ A3: 1:160,000	Prepared: M. LYTTLE	Project No: A780/049 REV B
Date: 17/10/2017	Checked: B. BARNETT	Figure: 33
Revision: Rev B	Reviewed: S. WILLIAMSON	

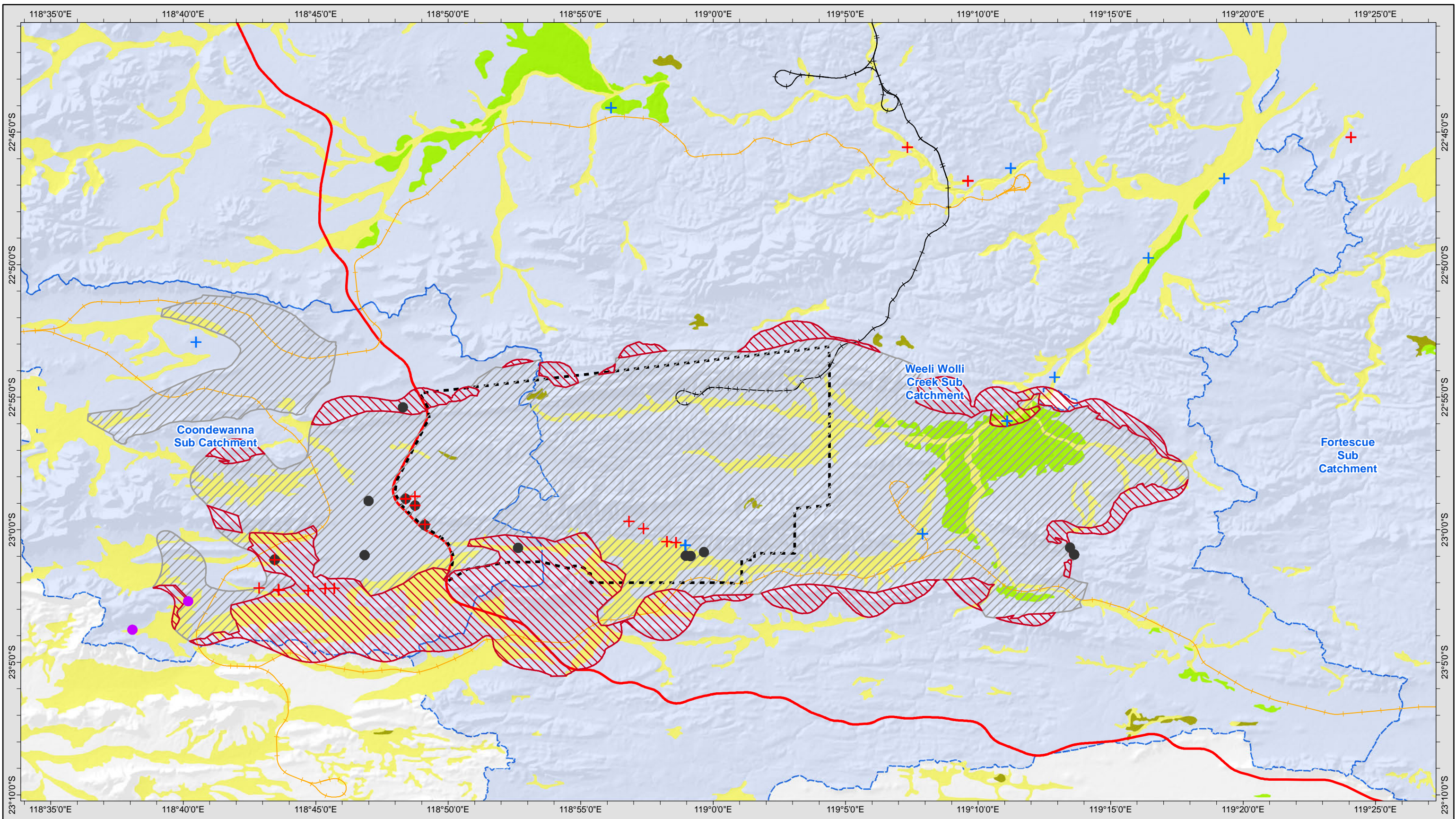
**1:20000 Surficial Geology**

<ul style="list-style-type: none"> <li>Proposed Mining Area C Development Envelope</li> <li>Additional Development Envelope</li> <li>Current Approved Development Envelope</li> <li>Mining Area C EMP Rev 6 Impact Assessment Area</li> <li>Indicative Additional Impact Assessment Area</li> <li>New Modified Indicative</li> <li>Additional Impact Assessment Area</li> </ul>	<ul style="list-style-type: none"> <li>AFj - Jeerinah - Shale, chert, mudstone &amp; dolomite</li> <li>AFjd - Jeerinah - Dolerite sills</li> <li>AFjm - Jeerinah - Roy Hill Shale (marker chert)</li> <li>AFjr - Jeerinah - Roy Hill Shale</li> <li>AHd - Wittenoom - Unknown Member</li> <li>AHda - Wittenoom - West Angela Member</li> <li>AHdb - Wittenoom - Bee Gorge Member</li> <li>AHdp - Wittenoom - Paraburdoo Member</li> <li>AHm - Marra Mamba - MacLeod Member</li> <li>AHmn - Marra Mamba - Mt Newman Member</li> <li>AHmu - Marra Mamba - Nammuldi Member</li> <li>AHr - Mt McRae Shale</li> <li>AHs - Mt Sylvia Formation</li> <li>CID - Robe - Oolitic channel iron deposit</li> <li>Cza - Alluvium (consolidated)</li> <li>Czb - Silcrete (indurated)</li> <li>Czc - Colluvium &amp; alluvium</li> <li>Czcb - Colluvium &amp; alluvium (chert &amp; BIF clasts)</li> <li>Czcg - Indurated colluvium (Canga)</li> <li>Czci - Indurated Czc / Czcb</li> <li>Czcm - Colluvium &amp; alluvium (ore, chert &amp; BIF clasts)</li> <li>Czc - Colluvium &amp; alluvium (ore clasts)</li> <li>Czi - Unknown</li> <li>Czk - Calcrete</li> <li>Czl - Ferricrete (laterite)</li> <li>Czm - Oakover - Micritic lacustrine limestone</li> <li>Czpi - Consolidated ferruginous pisolites</li> <li>H1 - Martite (microplatey haematite)</li> <li>H2 - Martite goethitic supergene ore (ochereous)</li> <li>H2/AHda - Martite goethitic supergene ore (ochereous)</li> <li>H2/AHm - Martite goethitic supergene ore (ochereous)</li> <li>H2/PHbd - Martite goethitic supergene ore (ochereous)</li> <li>H2/PHbj - Martite goethitic supergene ore (ochereous)</li> <li>H2/PHbw - Martite goethitic supergene ore (ochereous)</li> <li>PHbd - Brockman - Dales Gorge (BIF &amp; Shale)</li> <li>PHbj - Brockman - Joffre (BIF with chert &amp; shale)</li> <li>PHbw - Brockman - Mt Whaleback Shale</li> <li>PHby - Brockman - Yandicoogina Shale</li> <li>PHj - Weeli Wolli - BIF</li> <li>PKd - Dolerite sills</li> <li>Pd - Dolerite dykes</li> <li>Pdd - Dolerite dykes</li> <li>Pds - Weeli Wolli - Dolerite sills</li> <li>Qa - Alluvium (drainage channels) - unconsolidated silt, sand and gravel</li> <li>Qc - Talus &amp; colluvium</li> <li>Tmco - Alluvial haematite (red ochre detritals)</li> <li>BHP Billiton Rail</li> <li>Rio Tinto Rail</li> <li>Great Northern Highway</li> </ul>
---	--

**Liability**  
BHP Billiton does not warrant that this map is free from errors or omissions. BHP Billiton shall not be in any way liable for loss, damage or injury to the user of this map or any other person or organization consequent upon or incidental to the existence of errors or omissions on this map. This map has been compiled with data from numerous sources with different levels of reliability and is considered by the authors to be fit for its intended purpose at the time of publication. However, it should be noted that the information shown may be subject to change and ultimately, map users are required to determine the suitability of use for any particular purpose.

0 5 10  
Kilometres  
Coordinate System: GCS GDA 1994  
Datum: GDA 1994





Spatial Data - Business Development  
BHP BILLITON IRON ORE

**MINING AREA C - SOUTHERN FLANK**  
Widespread surrogate stygofauna in the Upper Weeli Wolli and Coondewanna subcatchments

Scale @ A3: 1:250,000	Prepared: M. LYTTLE	Project No: A780/051 REV B
Date: 2/08/2017	Checked: B. BARNETT	Figure: 35
Revision: Rev A	Reviewed: S. WILLIAMSON	

**Stygofauna Species**

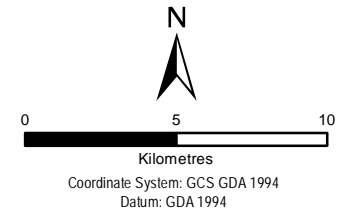
- Australocamptus sp.
- + Maarika weeliwollii
- Paramelitidae sp. B03
- nr Billibathynella sp. B02
- + (=Parabathynellidae sp. S03)

- ▣ Proposed Mining Area C Development Envelope
- ▣ Groundwater Assessment Area
- ▣ Mining Area C EMP Rev 6 Groundwater Assessment Area
- ▣ WA Hydrographic Subcatchment

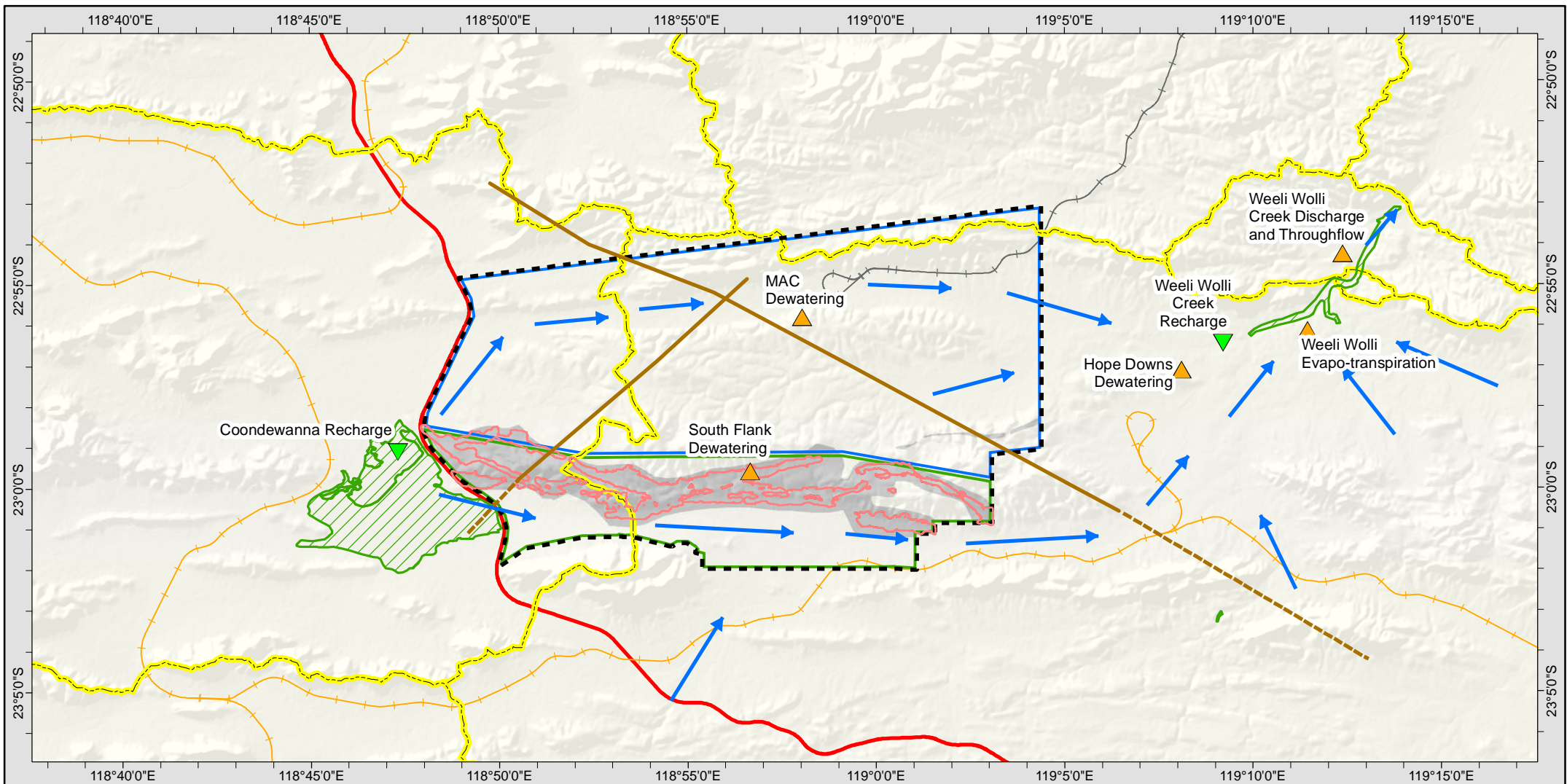
- Alluvium - unconsolidated silt, sand and gravel
- Colluvium - unconsolidated quartz and rock fragments in soil
- Calcrete - sheet carbonate usually formed in major drainage lines

- BHP Billiton Rail
- Rio Tinto Rail
- Great Northern Highway

Liability  
BHP Billiton does not warrant that this map is free from errors or omissions. BHP Billiton shall not be in any way liable for loss, damage or injury to the user of this map or any other person or organisation consequent upon or incidental to the existence of errors or omissions on this map. This map has been compiled with data from numerous sources with different levels of reliability and is considered by the authors to be fit for its intended purpose at the time of publication. However, it should be noted that the information shown may be subject to change and ultimately, map users are required to determine the suitability of use for any particular purpose.







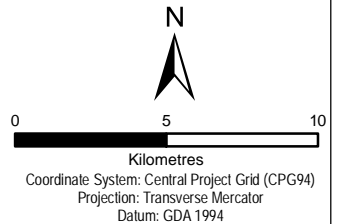
BHP BILLITON IRON ORE

### MINING AREA C - SOUTHERN FLANK Conceptual groundwater flow within project area

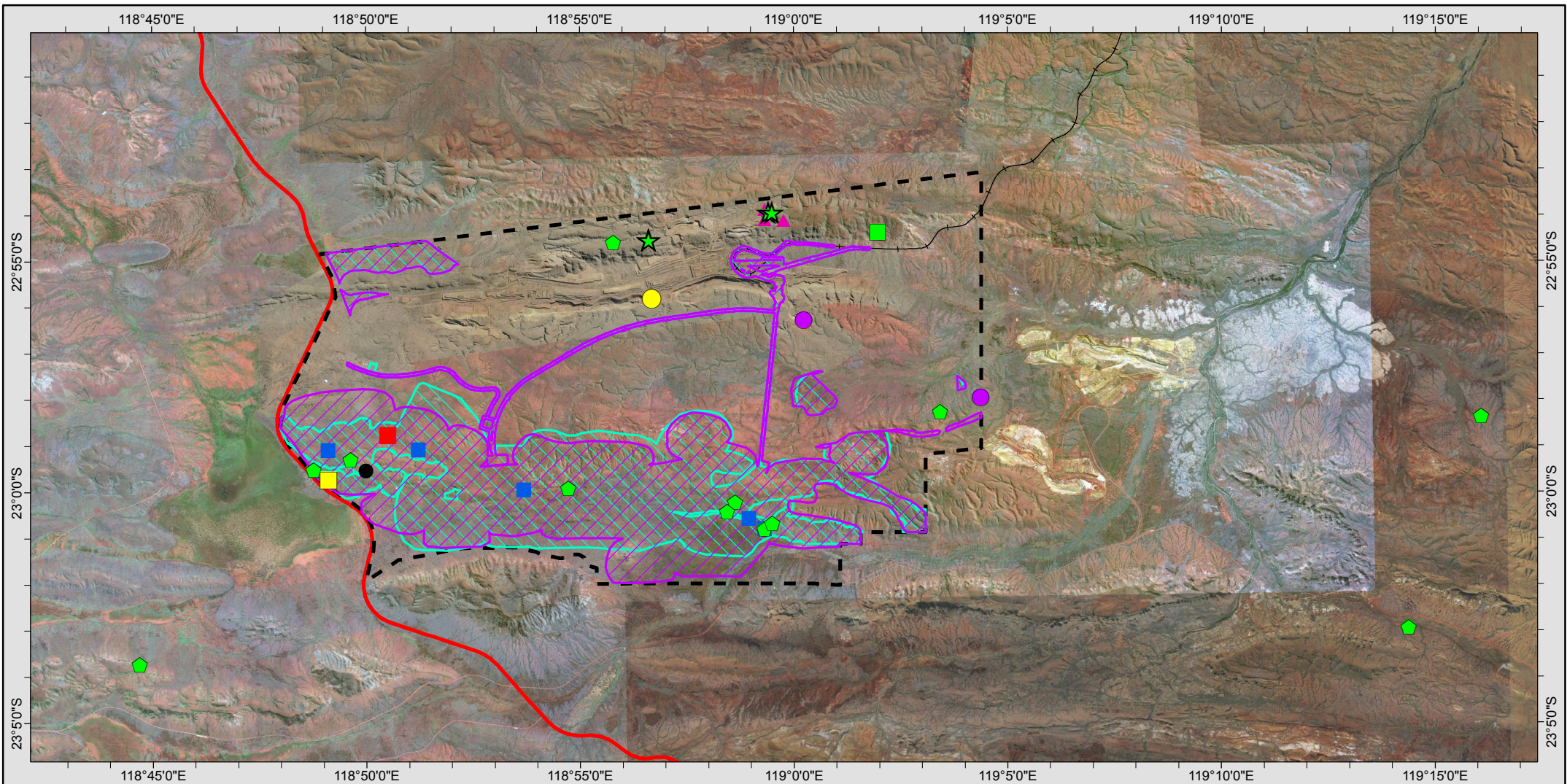
Scale @ A4: 1:250,000	Prepared: M. LYTTLE	Project No: A780/077 REV B
Date: 24/08/2017	Checked: T. LAWTON	Figure: 36
Revision: Rev B	Reviewed: S. WILLIAMSON	

- ➔ Flow direction
- ▲ Discharge
- ▼ Recharge
- Inferred dyke
- Mapped dyke
- Priority Ecological Community
- WA Hydrographic Catchments - Sub Catchments
- Proposed Mining Area C Development Envelope
- Approved Mining Area C (Northern Flank) Development Envelope
- Additional Development Envelope
- Indicative Additional Impact Assessment Area (Pit)
- Indicative pit outline
- BHP Billiton Rail
- Rio Tinto Rail
- Highways

Liability  
BHPBilliton does not warrant that this map is free from errors or omissions. BHPBilliton shall not be in any way liable for loss, damage or injury to the user of this map or any other person or organisation consequent upon or incidental to the existence of errors or omissions on this map. This map has been compiled with data from numerous sources with different levels of reliability and is considered by the authors to be fit for its intended purpose at the time of publication. However, it should be noted that the information shown may be subject to change and ultimately, map users are required to determine the suitability of use for any particular purpose.







BHP BILLITON IRON ORE

### MINING AREA C - SOUTHERN FLANK Location of All Prethopalpus species

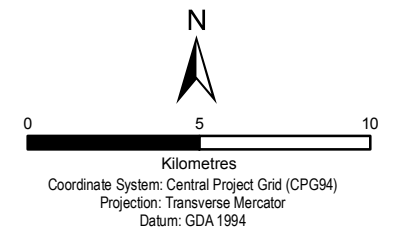
Scale @ A4: 1:220,669	Prepared: M. LYTTLE	Project No: A780/027 REV B
Date: 14/08/2017	Checked: T Carroll	Figure:
Revision: Rev B	Reviewed: S. WILLIAMSON	

#### All Prethopalpus

- Prethopalpus julianeae
- Prethopalpus maini
- ▲ Prethopalpus pearsoni
- ◆ Prethopalpus sp.
- Prethopalpus sp. (Araneae sp. S07)
- Prethopalpus sp. B03 (ex Araneomorphae/ Oonopidae sp. B03)
- Prethopalpus sp. B06
- Prethopalpus sp. B15
- ★ Prethopalpus sp. B18 (=?Araneae sp. S05)

- Prethopalpus sp. B24
- ⬛ Proposed Mining Area C Development Envelope
- ▭ Indicative Additional Impact Assessment Area
- ▭ Modified Indicative Additional Impact Assessment Area
- Great Northern Highway
- BHP Billiton Rail

Liability  
BHPBIO does not warrant that this map is free from errors or omissions. BHPBIO shall not be in any way liable for loss, damage or injury to the user of this map or any other person or organisation consequent upon or incidental to the existence of errors or omissions on this map. This map has been compiled with data from numerous sources with different levels of reliability and is considered by the authors to be fit for its intended purpose at the time of publication. However, it should be noted that the information shown may be subject to change and ultimately, map users are required to determine the suitability of use for any particular purpose.





**Legend**

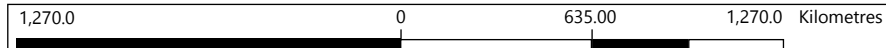
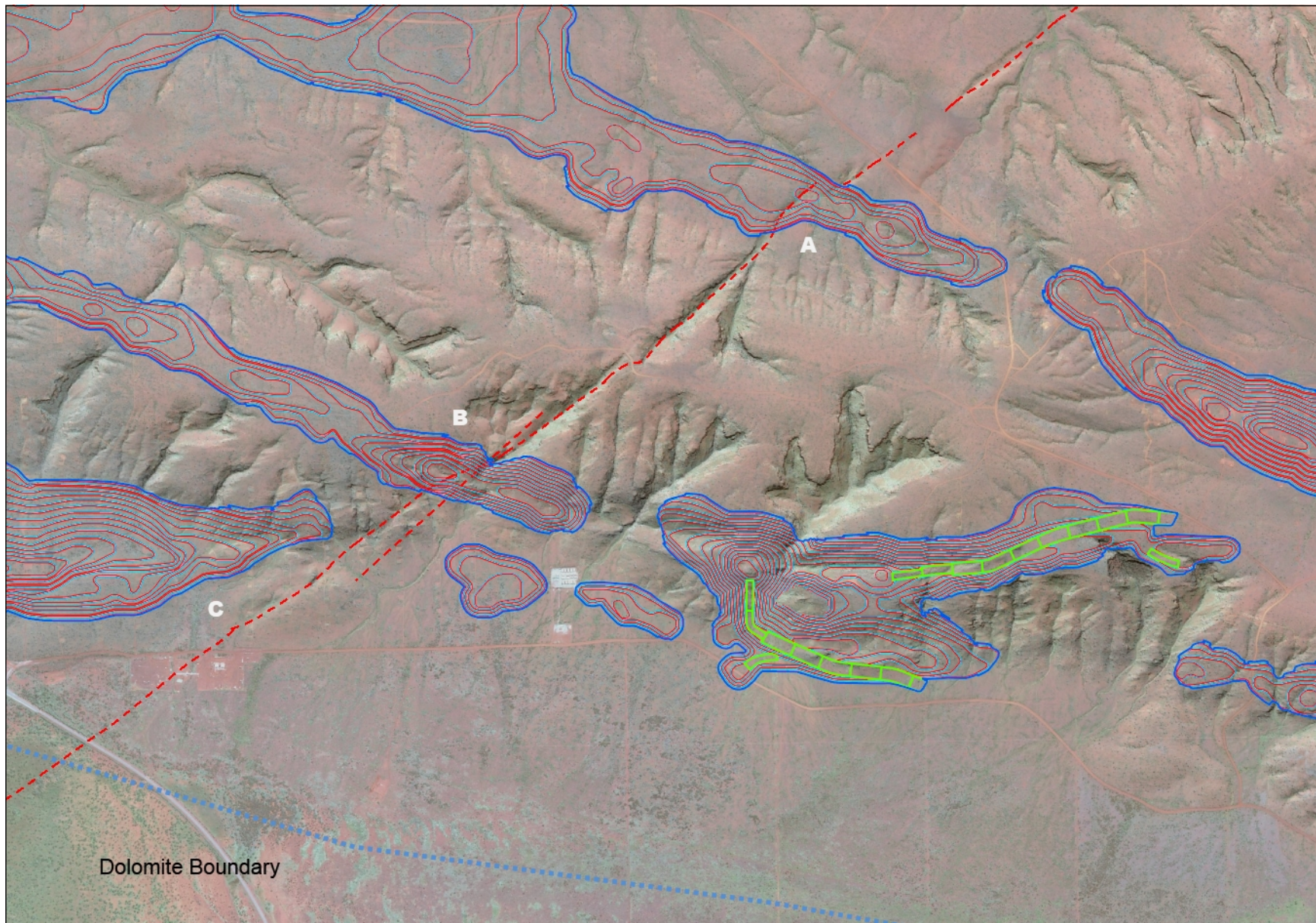
**Recommended Pit Design**

- Pit Crest
- Pit Toe
- Ramp
- Outline

**Hillshade**

**BHPBIO 1:20000 Structure**

- Fault
- Fold
- Dyke
- Joint
- Vein

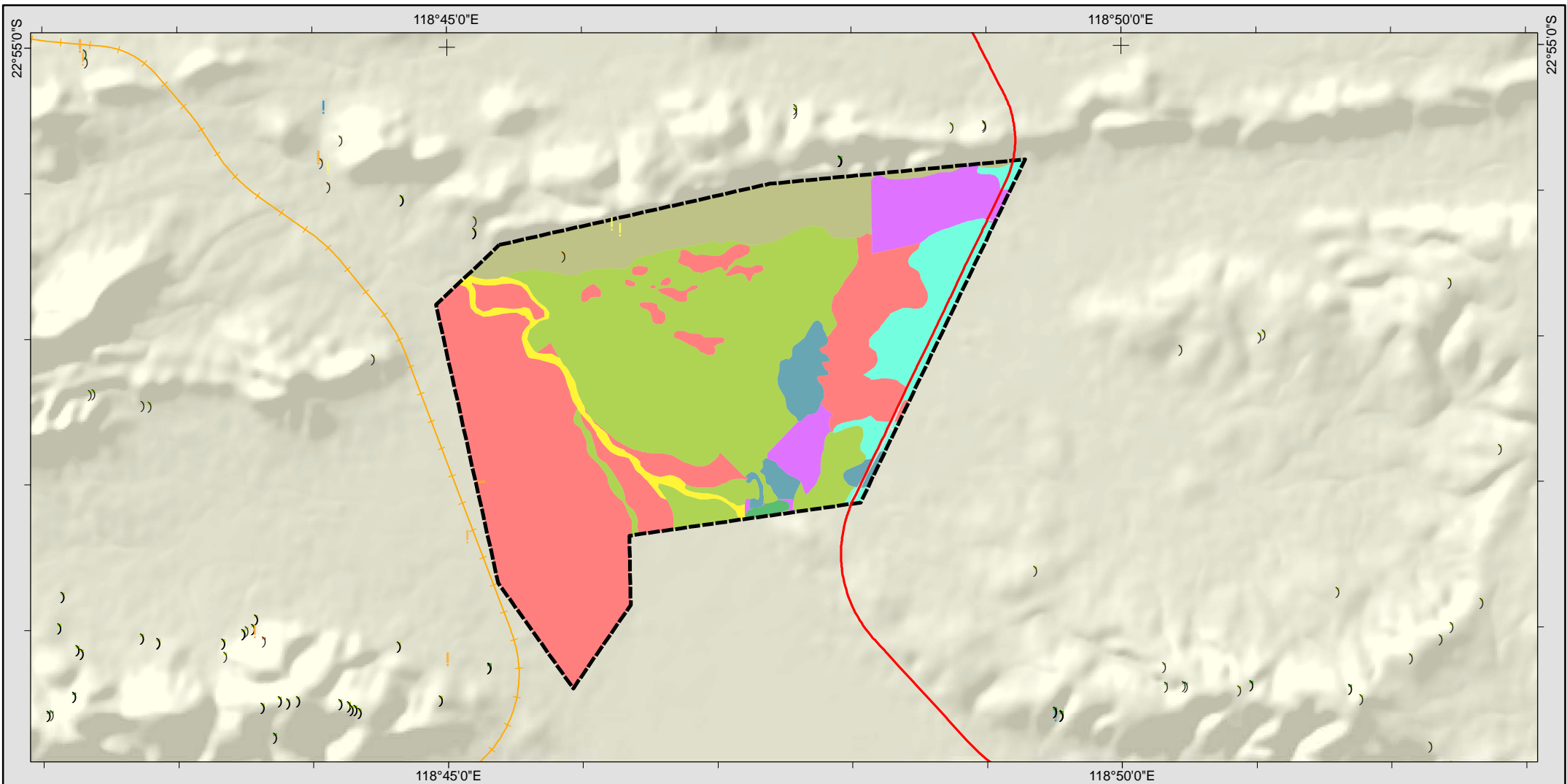


1: 25,000



**Notes**





BHP BILLITON IRON ORE

**JUNA DOWNS PROJECT AREA**  
 Fauna habitats and conservation significant fauna within the Juna Downs Project Area

Scale @ A4: 1:70,000	Prepared: S. TRINDER	Project No: A780/086 REV A
Date: 26/10/2017	Checked: R. GREGORY	Figure:
Revision: Rev A	Reviewed: S. WILLIAMSON	

**Conservation Significant Vertebrate Fauna**

- ) Underwoodisaurus seorsus ( Priority 2 )
- ) Trichosurus vulpecula subsp. arnhemensis ( n/a )
- ) Rhinonictes aurantia ( n/a )
- ) Pseudomys chapmani ( Priority 4 )
- ) Merops ornatus ( n/a )
- ) Macroderma gigas ( n/a )
- ! Liasis olivaceus subsp. barroni ( n/a )
- ! Gallina cyanoleuca ( n/a )
- ! Falco cenchroides ( n/a )
- ! Coracina novaehollandiae subsp. subpallida ( n/a )
- ! Chrysococcyx basalis ( n/a )
- ! Cacomantis pallidus ( n/a )

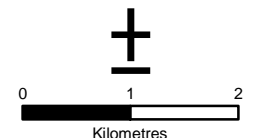
**Fauna Habitat**

- ☐ Cleared/ Disturbed
- ☐ Drainage Area/ Floodplain
- ☐ Gilgai Plain
- ☐ Hardpan Plain
- ☐ Hillcrest/ Hillslope
- ☐ Major Drainage Line
- ☐ Minor Drainage Line
- ☐ Mulga Woodland
- ☐ Sand Plain
- ☐ Stony Plain

**Juna Downs Project Area**

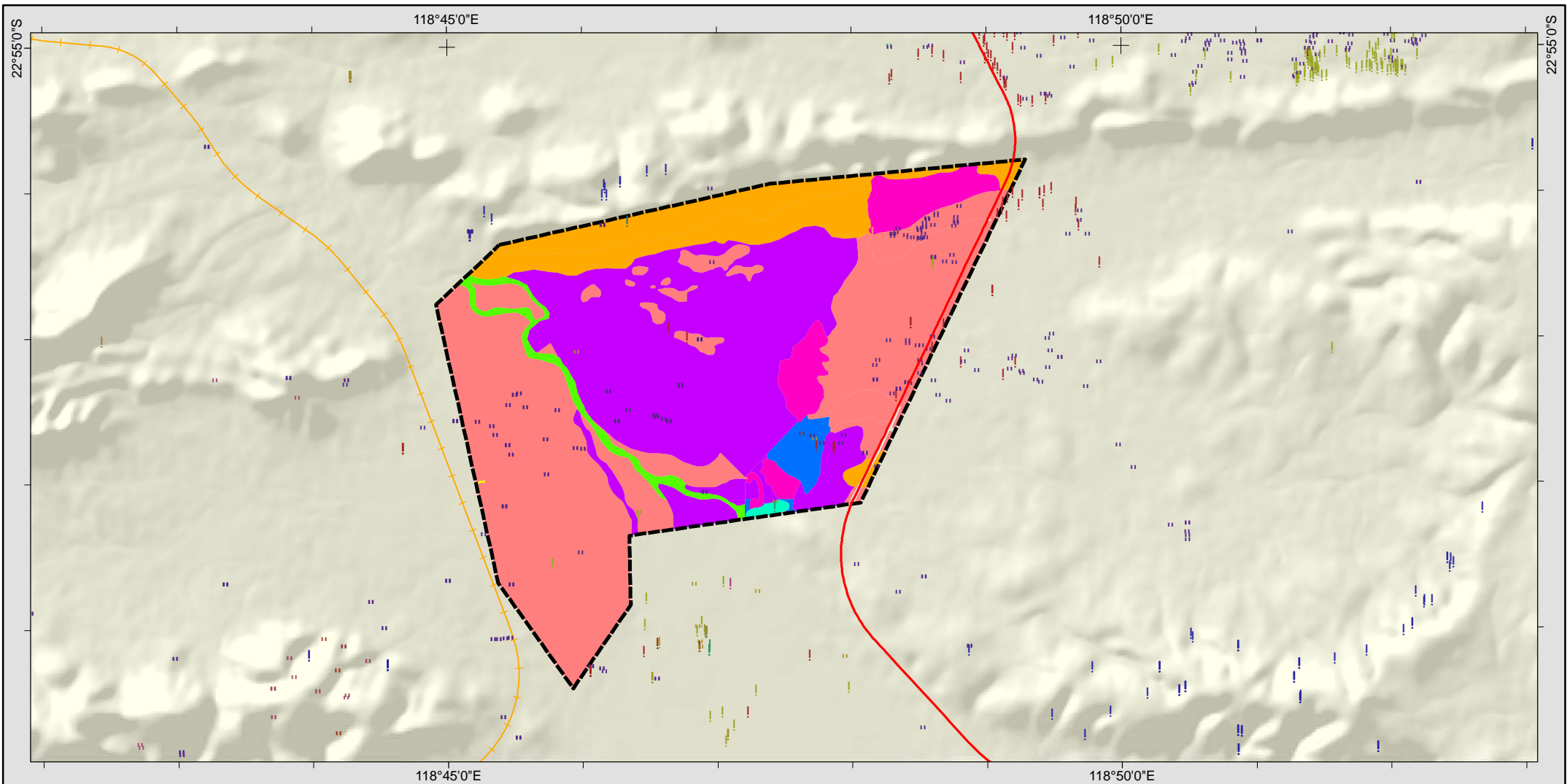
- ☐ Great Northern Highway
- ☐ Rail
- ☐ Rio Tinto Rail

Liability  
 BHPBIO does not warrant that this map is free from errors or omissions. BHPBIO shall not be in any way liable for loss, damage or injury to the user of this map or any other person or organisation consequent upon or incidental to the existence of errors or omissions on this map. This map has been compiled with data from numerous sources with different levels of reliability and is considered by the authors to be fit for its intended purpose at the time of publication. However, it should be noted that the information shown may be subject to change and ultimately, map users are required to determine the suitability of use for any particular purpose.



Coordinate System: Central Project Grid (CPG94)  
 Projection: Transverse Mercator  
 Datum: GDA 1994





BHP BILLITON IRON ORE

**JUNA DOWNS PROJECT AREA**  
 Broad floristic formations and conservation  
 significant flora within the Juna Downs project area

Scale @ A4: 1:70,000	Prepared: S. TRINDER	Project No: A780/085 REV A
Date: 26/10/2017	Checked: R. GREGORY	Figure:
Revision: Rev A	Reviewed: S. WILLIAMSON	

**Significant Flora Location**

- ! Acacia bromilowiana(Priority 4)
- ! Aristida jerichoensis var. subspinulifera(Priority 3)
- ! Aristida lazaridis(Priority 2)
- ! Eremophila magnifica subsp. magnifica(Priority 4)
- ! Goodenia lyrata(Priority 3)
- ! Goodenia nuda(Priority 4)
- ! Indigofera gilesii(Priority 3)
- ! Rhagodia sp. Hamersley (M. Trudgen 17794)(Priority 3)
- ! Sida sp. Barlee Range (S. van Leeuwen 1642)(Priority 3)
- ! Themeda sp. Hamersley Station (M.E. Trudgen 11431)(Priority 3)
- ! Triodia sp. Mt Ella (M.E. Trudgen 12739)(Priority 3)
- ! Vittadinia sp. Coondewanna Flats (S. van Leeuwen 4684)(Priority 1)

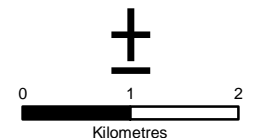
**Broad Floristic Formation**

- Disturbed
- Acacia Low Open Woodland
- Acacia Low Open Woodland
- Acacia Low Woodland
- Eriachne Tussock Grassland
- Eucalyptus Low Open Forest
- Themeda Open Tussock Grassland
- Triodia Hummock Grassland
- Triodia Open Hummock Grassland

**Great Northern Highway**

- Great Northern Highway
- Juna Downs Project Area
- Rail
- Rio Tinto Rail

Liability  
 BHPBIO does not warrant that this map is free from errors or omissions. BHPBIO shall not be in any way liable for loss, damage or injury to the user of this map or any other person or organisation consequent upon or incidental to the existence of errors or omissions on this map. This map has been compiled with data from numerous sources with different levels of reliability and is considered by the authors to be fit for its intended purpose at the time of publication. However, it should be noted that the information shown may be subject to change and ultimately, map users are required to determine the suitability of use for any particular purpose.



Coordinate System: Central Project Grid (CPG94)  
 Projection: Transverse Mercator  
 Datum: GDA 1994



**Table 1: Summary of troglofauna species only recorded within Indicative Additional Impact Assessment Areas**

Species *uncertain* are shown in bold.

Higher Group Species	Assessed IAIAA	Modified IAIAA	New		No. of Animals	No. of Holes	Likely Range (km)	Restriction Category
			Modified IAIAA	Modified IAIAA				
<b>Arachnida</b>								
<b>Pseudoscorpiones</b>								
<i>Indohya</i> `PSE005`	x	x	x		9	9	21	Unlikely
<i>Tyrannochthonius</i> sp. B14	x	x			1	1	-	Unlikely
<b>Schizomida</b>								
<i>Draculoides</i> sp. B20	x	x	x		4	4	10.0	Unlikely
<i>Draculoides</i> sp. B59-DNA	x				2	1	-	Unlikely
<i>Draculoides</i> sp. B32		x	x		4	1	-	Unlikely
<b>Araneae</b>								
?Gnaphosidae sp. B01		x	x		1	1	-	Unlikely
<b><i>Prethopalpus julianneae</i></b>	<b>x</b>	<b>x</b>	<b>x</b>		<b>1</b>	<b>1</b>	-	<b>Uncertain</b>
<i>Prethopalpus maini</i>	x		x		5	5	17.8	Unlikely
<b><i>Prethopalpus</i> sp. B15</b>	<b>x</b>	<b>x</b>	<b>x</b>		<b>1</b>	<b>1</b>	-	<b>Uncertain</b>
<i>Prethopalpus</i> sp. B24	x	x	x		1	1	-	Unlikely
<b>Malacostraca</b>								
<b>Isopoda</b>								
<b>nr <i>Andricophiloscia</i> sp. B16</b>	<b>x</b>	<b>x</b>	<b>x</b>		<b>1</b>	<b>1</b>	-	<b>Unlikely</b>
<b>Philosciidae sp. B03</b>	<b>x</b>	<b>x</b>	<b>x</b>		<b>17</b>	<b>1</b>	-	<b>Unlikely</b>
Philosciidae sp. B15	x	x	x		1	1	-	Unlikely
<i>Troglarmadillo</i> sp. B14	x	x	x		12	2	11.2	Unlikely
<b>Symphyla</b>								
<b>Cephalostigmata</b>								
<i>Australoschendyla</i> sp. B06	x		x		2	2	6.6	Unlikely
Chilenophilidae sp. B07	x		x		1	1	-	Unlikely
<i>Hanseniella</i> sp. B07	x	x	x		7	5	24.1	Unlikely
<i>Hanseniella</i> sp. B34	x	x	x		1	1	-	Unlikely
<b>Entognatha</b>								
<b>Diplura</b>								
Japygidae `DPL005`	x		x		2	2	14.5	Unlikely
Japygidae `DPL007`	x				3	2	5.7	Unlikely
Parajapygidae `DPL023`	x	x	x		2	2	3.1	Unlikely
<b>Parajapygidae `DPL024`</b>	<b>x</b>	<b>x</b>	<b>x</b>		<b>1</b>	<b>1</b>	-	<b>Uncertain</b>
Parajapygidae sp. B25	x		x		1	1	-	Unlikely
<b>Insecta</b>								
<b>Coleoptera</b>								
nr <i>Claviger</i> sp. B01		x	x		1	1	-	Unlikely
<b>TOTAL</b>	<b>21</b>	<b>17</b>	<b>21</b>					