

Yeelirrie Uranium Project
Response to Submissions

Attachment 2

Additional Subterranean Fauna Figures

Attachment 2 – Additional Figures

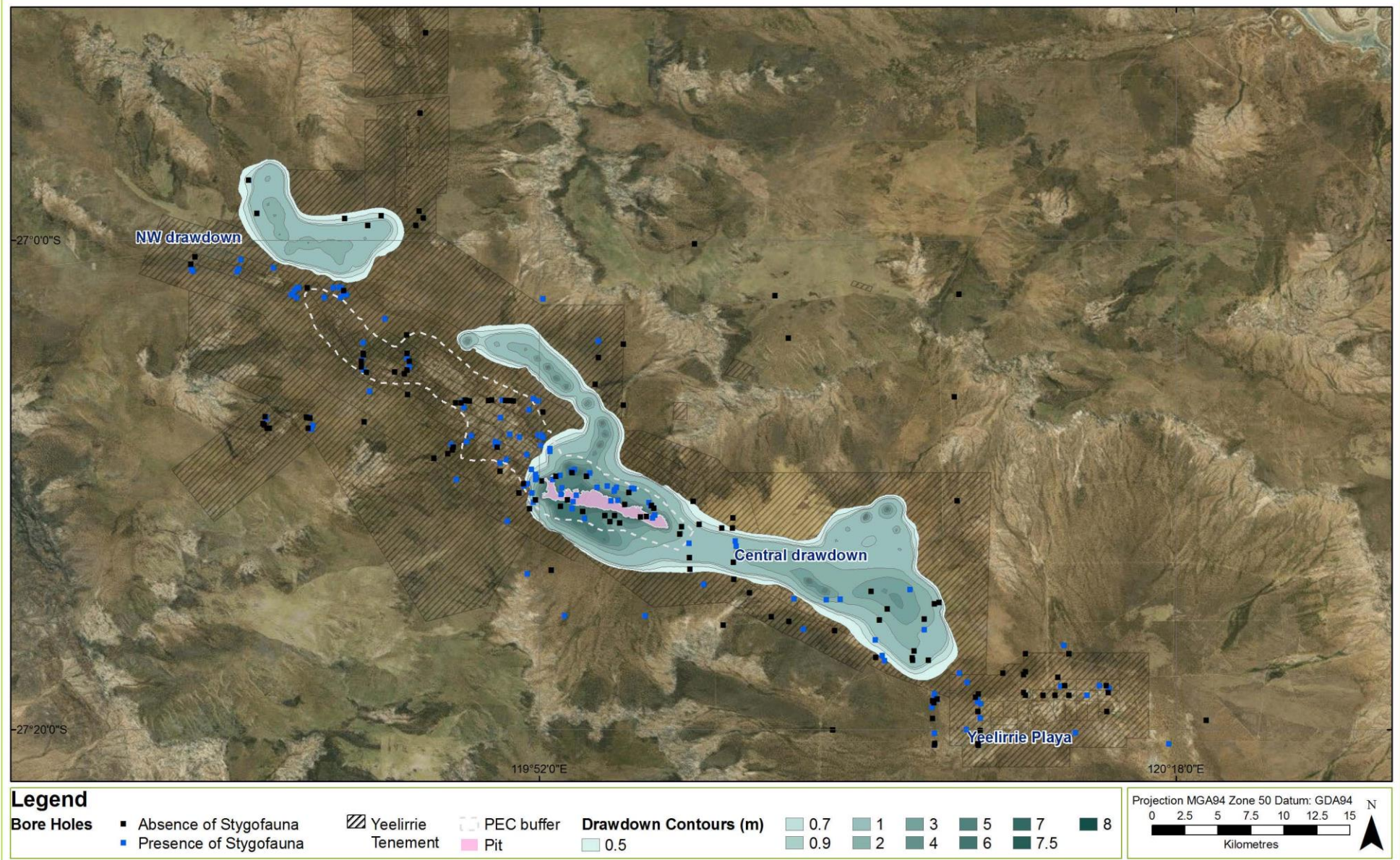


Figure 1. Distribution of bores that yielded or did not yield stygofauna. Note that some bores in a drill line have been displaced slightly to show results more clearly.

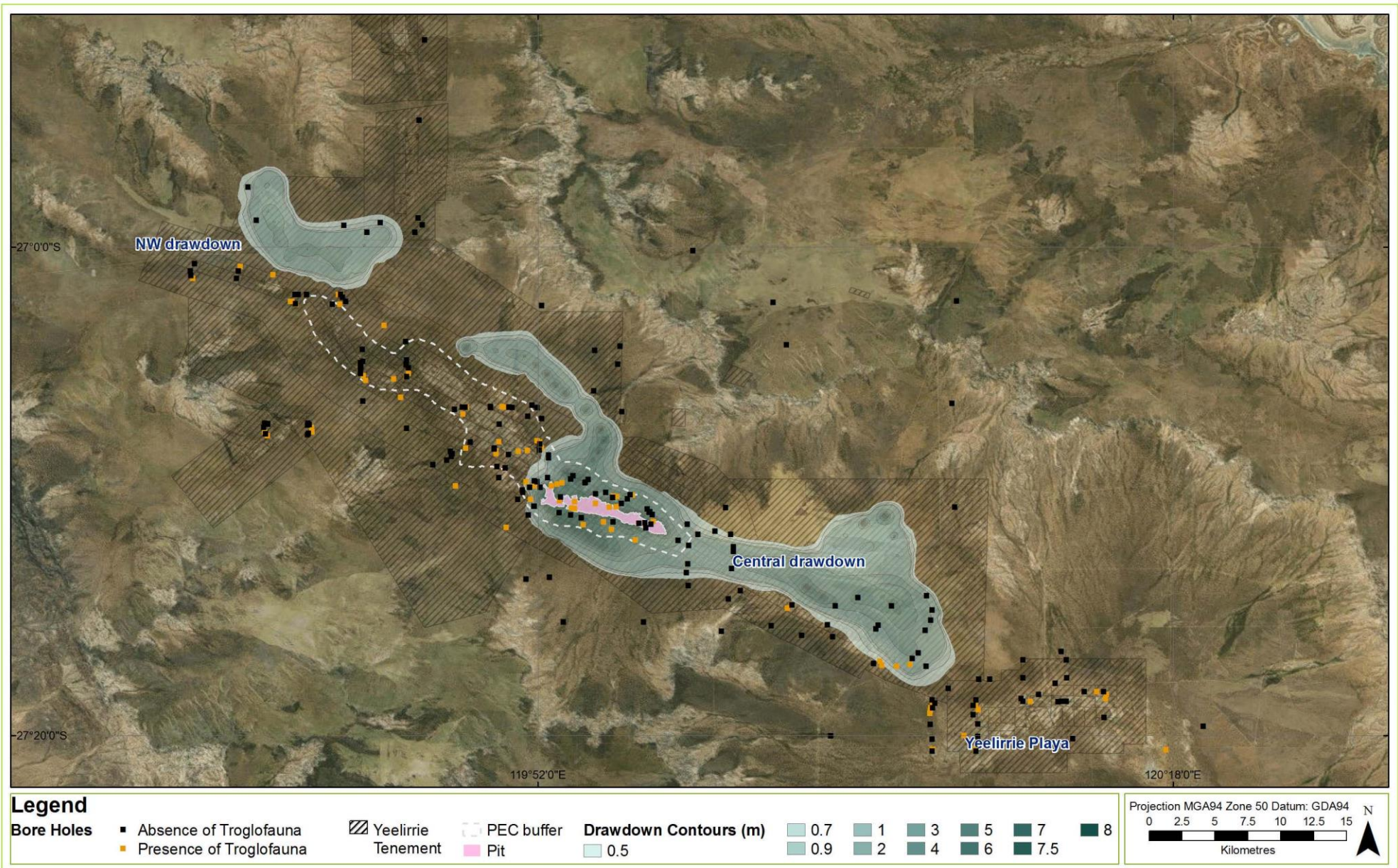


Figure 2. Distribution of bores that yielded or did not yield troglofauna. Note that some bores in a drill line have been displaced slightly to show results more clearly.

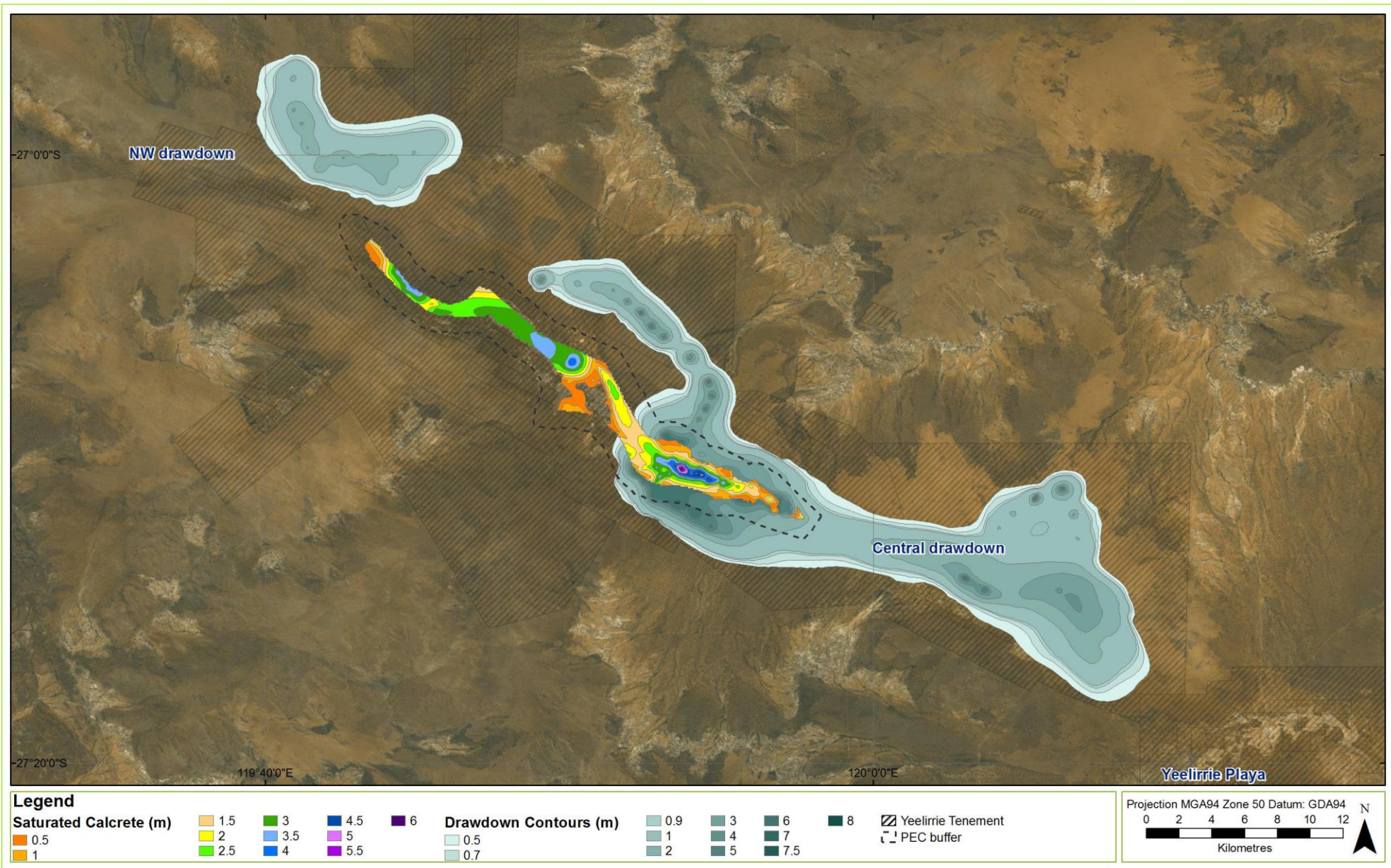


Figure 3. Depth of saturated calcrete and transitional calcrete within the Yeelirrie PEC. The predicted drawdown is also shown.

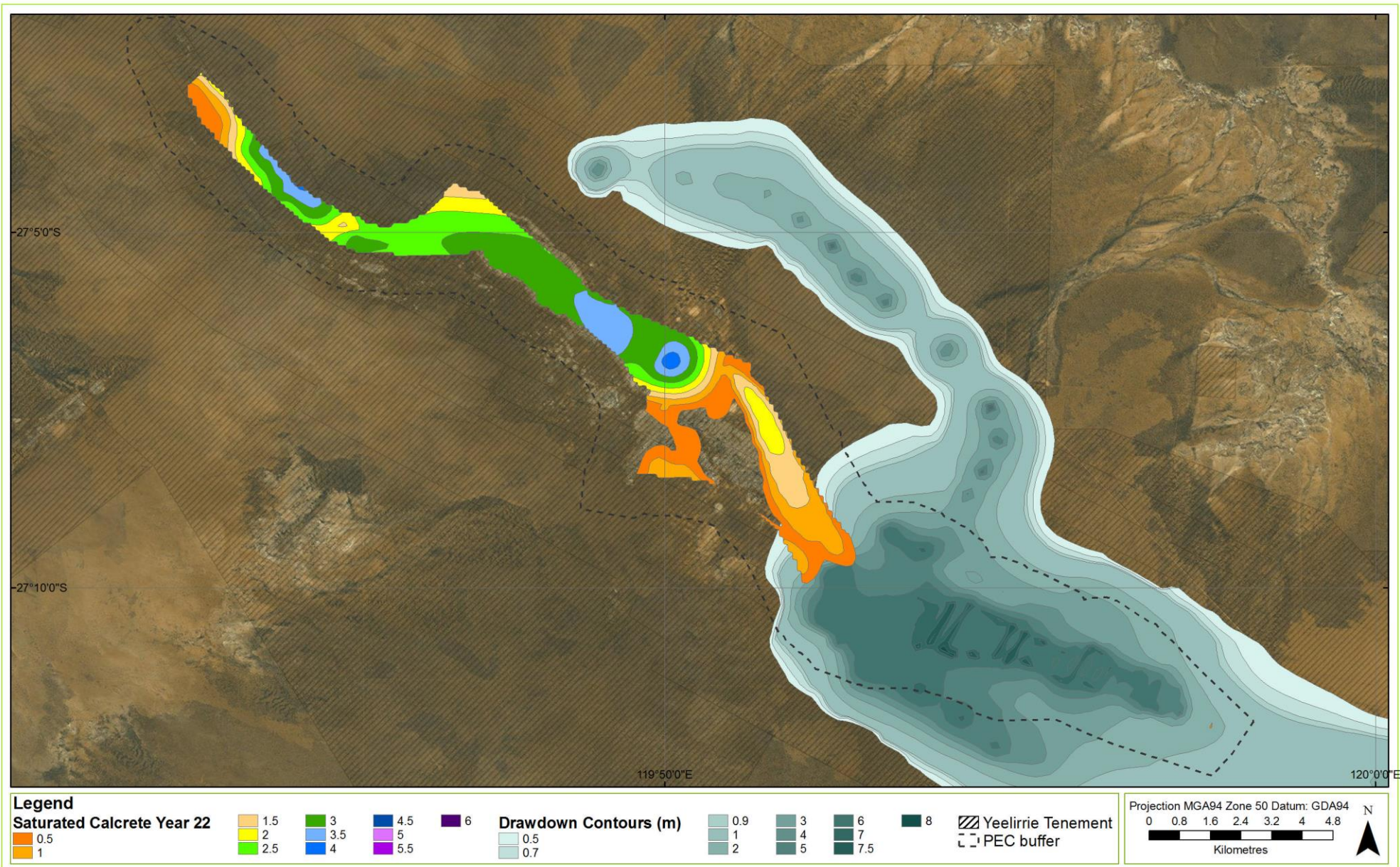


Figure 4. Depth of saturated calcrete and transitional calcrete within the Yeelirrie PEC at Year 22 of mining, showing loss of saturated calcrete within most of the area of drawdown and a slight reduction in the thickness of saturated calcrete outside the 0.5 m drawdown contour.

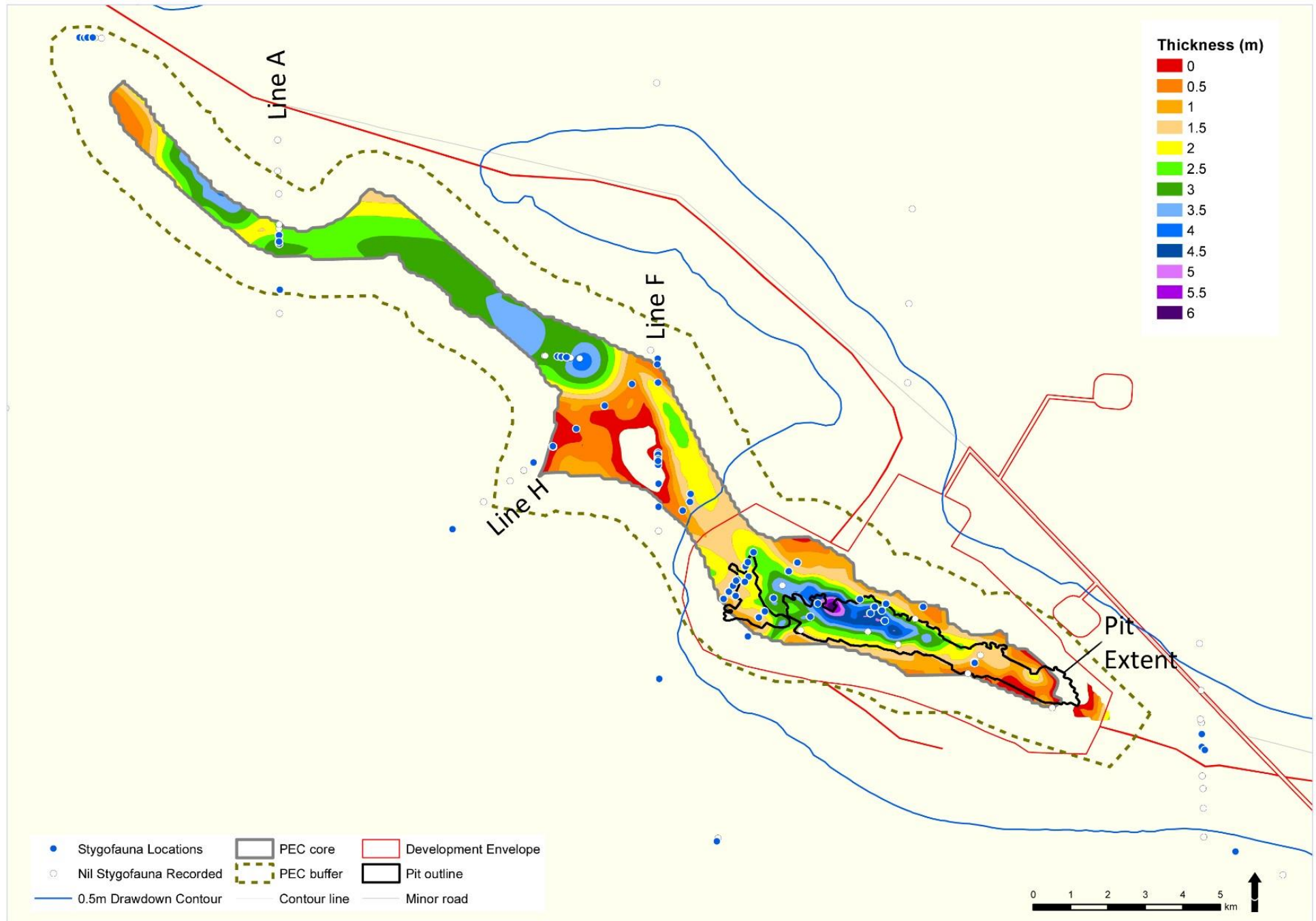


Figure 5. Proposed extent of the Yeelirrie PEC, showing the spatial extent and depth of calcrete and transitional calcrete.

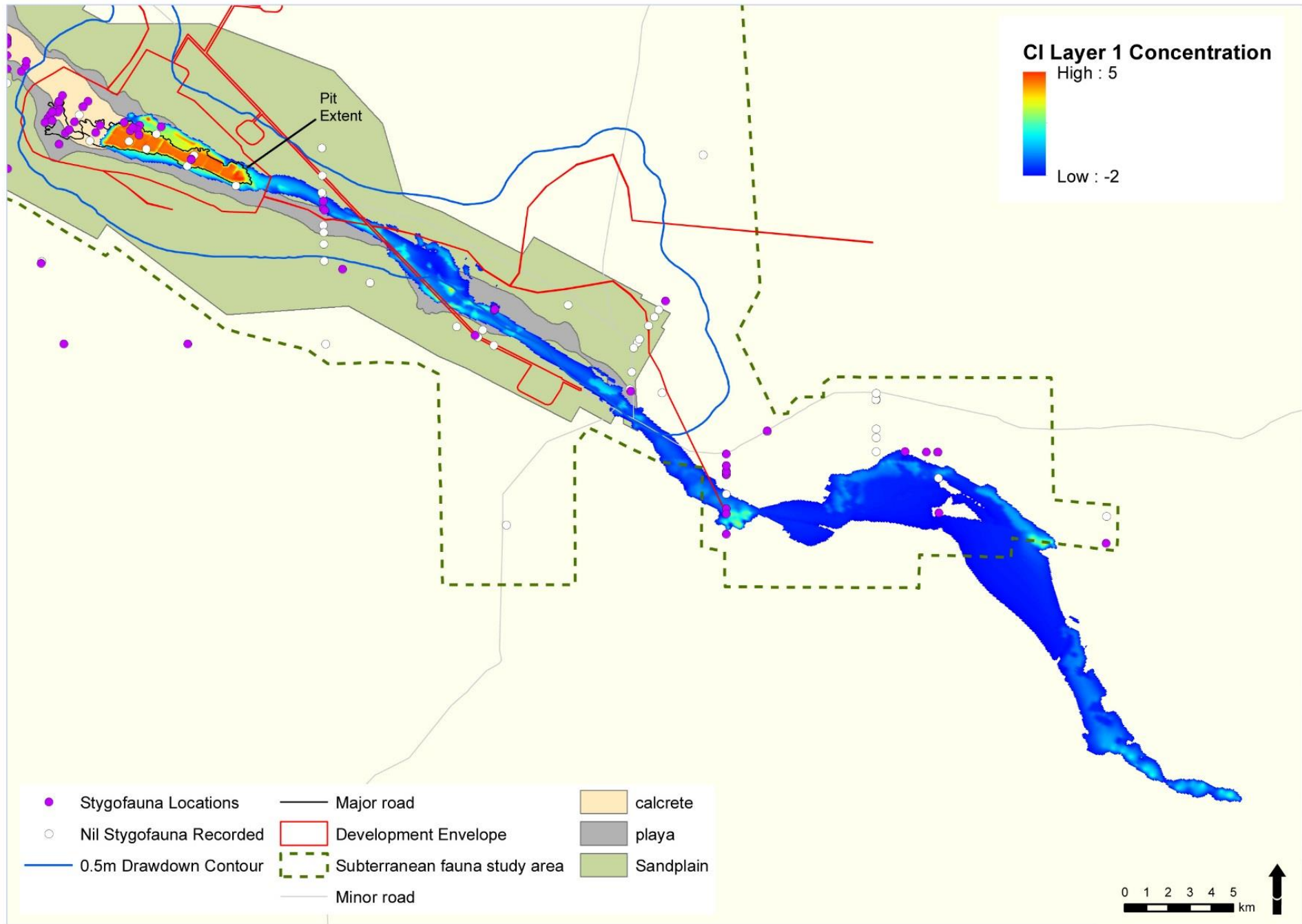


Figure 6. Extent of the salinity plume (measured as Cl concentration) extending downstream of the TSF at Yeelirrie (5 = 100,000 mg/L, -2 = 0.01 mg/L).