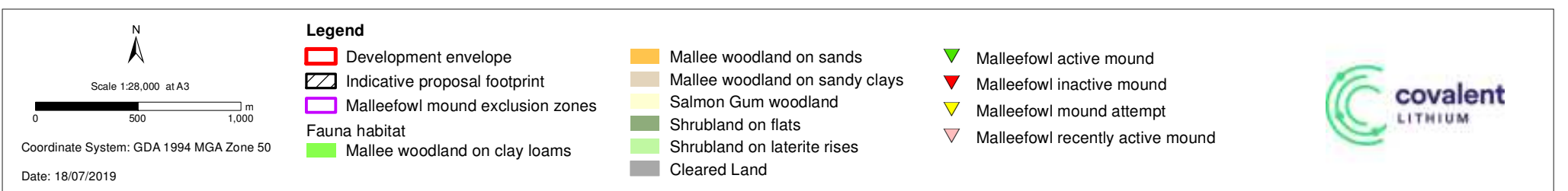


Figure 9: Current conservation significant fauna - Exclusion zones



W:\Stratgen\GIS\Consult\2017\SQM\SQM17406\01_GIS_documents\ArcMap_documents\SQM17406_G051_RevA.mxd

© 2019. Whilst every care has been taken to prepare this map, Stratgen JBS&G & Covalent Lithium makes no representations or warranties about its accuracy, reliability, completeness or suitability for any particular purpose and cannot accept liability and responsibility of any kind (whether in contract, tort or otherwise) for any expenses, losses, damages and/or costs (including indirect or consequential damage) which are or may be incurred by any party as a result of the map being inaccurate, incomplete or unsuitable in any way and for any reason.

Service Layer Credits: SLIP Public Services Locate Imagery 2019. Client: Covalent Lithium. Site data, 7/2019. Created by: cthatcher

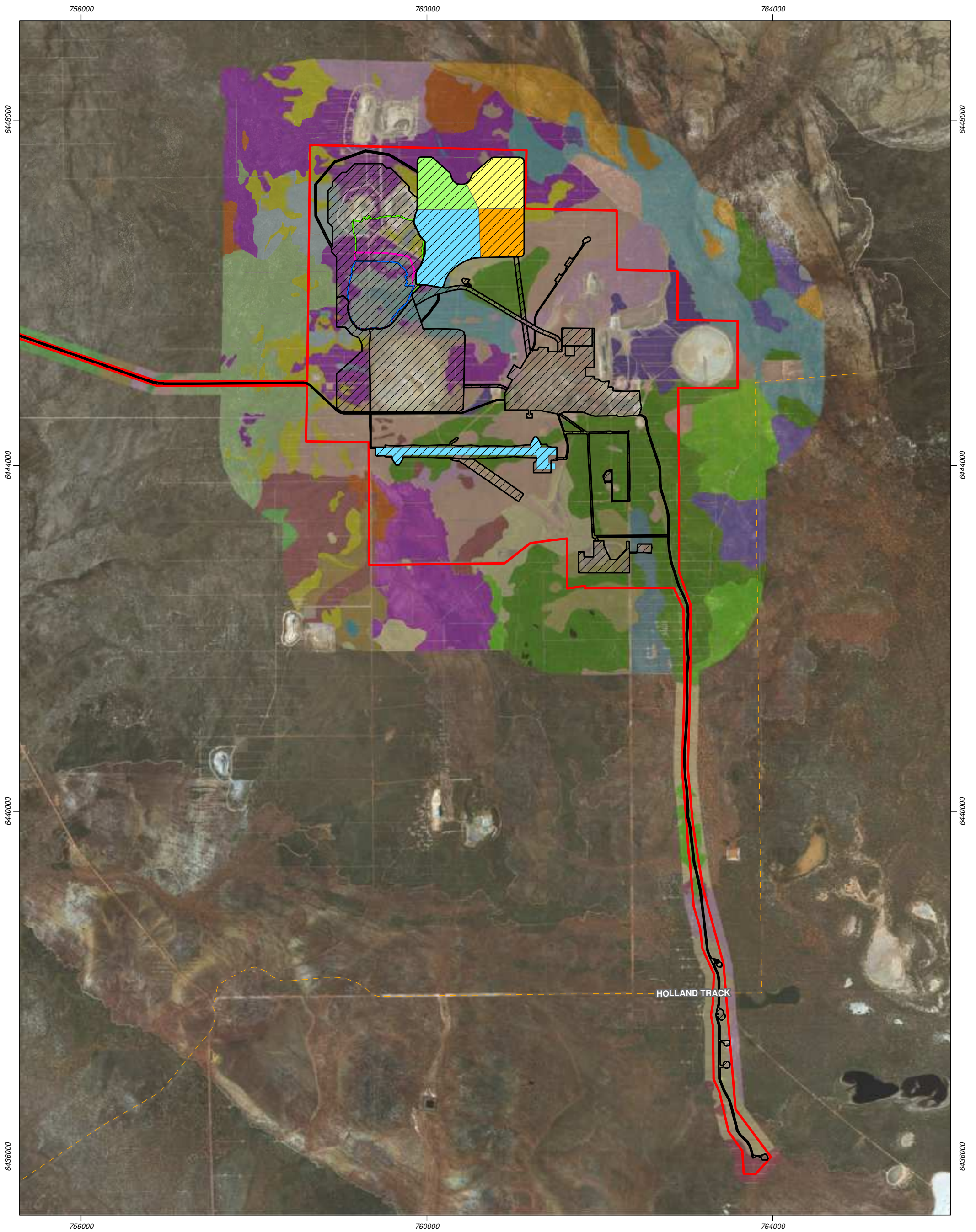
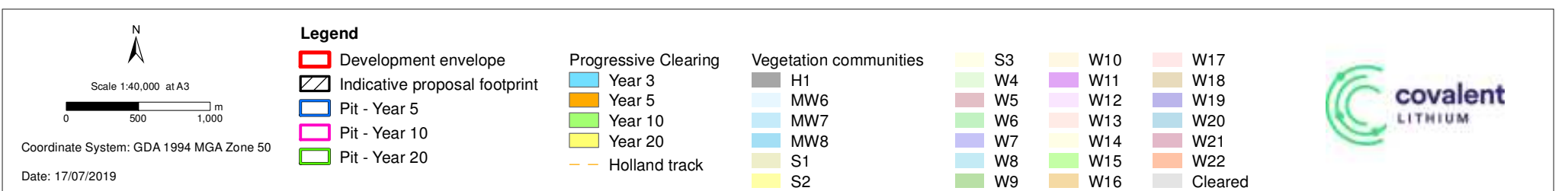


Figure 10: Approximate progressive clearing



G:\Stratgen\GIS\Consult\2017\SQM\SQM17406\01_GIS_documents\ArcMap_documents\SQM17406_G049_RevA.mxd

© 2019. Whilst every care has been taken to prepare this map, Stratgen JBS&G & Earl Grey Mine makes no representations or warranties about its accuracy, reliability, completeness or suitability for any particular purpose and cannot accept liability and responsibility of any kind (whether in contract, tort or otherwise) for any expenses, losses, damages and/or costs (including indirect or consequential damage) which are or may be incurred by any party as a result of the map being inaccurate, incomplete or unsuitable in any way and for any reason.

Service Layer Credits: Source: Esri, DigitalGlobe, GeoEye, Earthstar Geographics, CNES/Airbus DS, USDA, USGS, AeroGRID, IGN, and the GIS User Community SLIP Public Services Locate Imagery 2019. Client: Earl Grey Mine. Site data, 7/2019. Created by: CJT

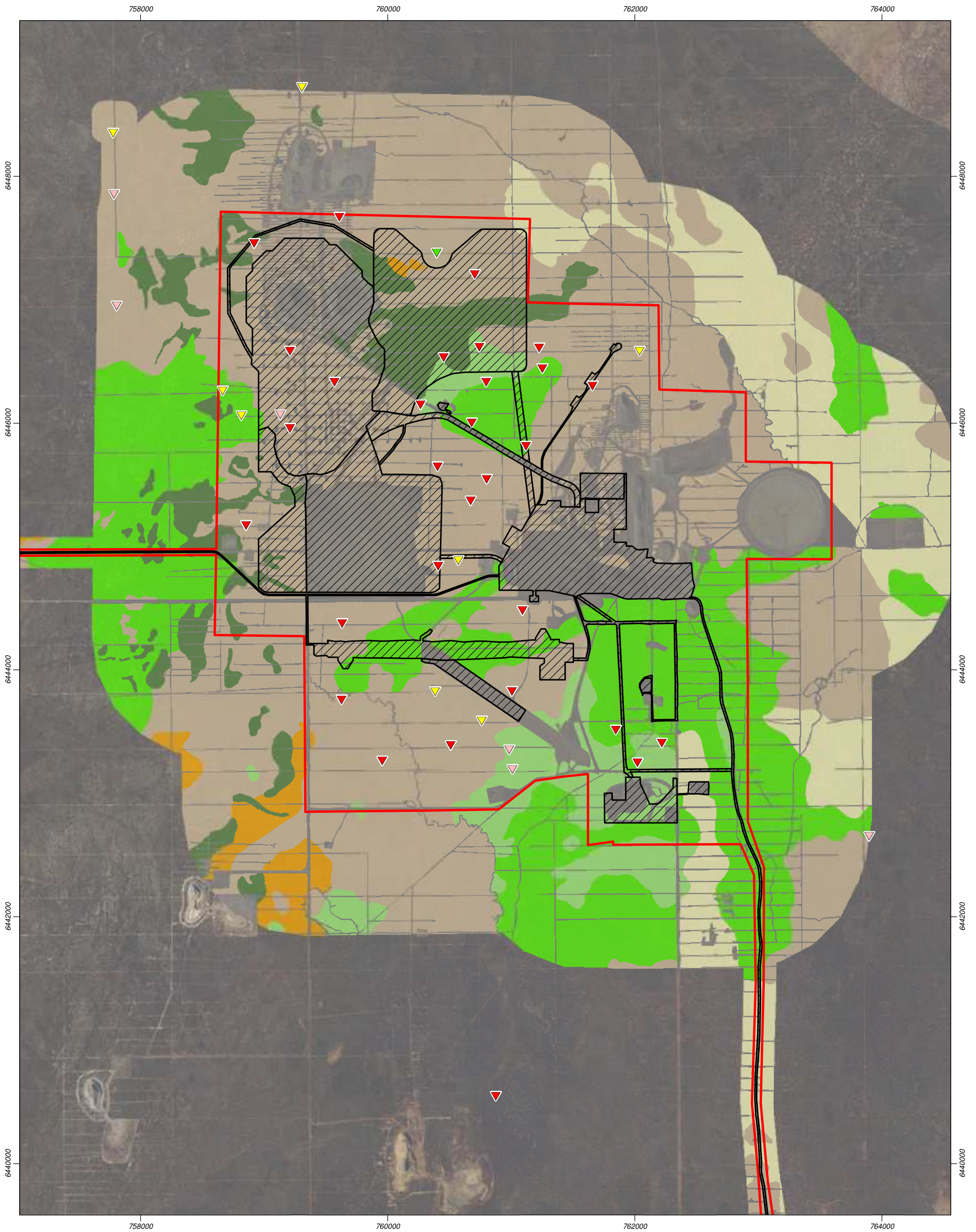


Figure 11: Malleefowl mounds in the development envelope

 Scale 1:28,086 at A3 Coordinate System: GDA 1994 MGA Zone 50 Date: 17/07/2019	Legend		
	<ul style="list-style-type: none"> Development Envelope Indicative proposal footprint Fauna habitat <ul style="list-style-type: none"> Mallee woodland on clay loams Mallee woodland on sands 	<ul style="list-style-type: none"> Mallee woodland on sandy clays Salmon Gum woodland Shrubland on flats Shrubland on laterite rises Cleared Land 	<ul style="list-style-type: none"> ▼ Malleefowl active mound ▼ Malleefowl inactive mound ▼ Malleefowl mound attempt ▼ Malleefowl recently active mound



G:\Stratgen\GIS\Consult\2017\SQM\SQM17406\01_GIS_documents\ArcMap_documents\SQM17406_G024_RevG.mxd

© 2019. Whilst every care has been taken to prepare this map, Stratgen JBS&G & Covalent Lithium makes no representations or warranties about its accuracy, reliability, completeness or suitability for any particular purpose and cannot accept liability and responsibility of any kind (whether in contract, tort or otherwise) for any expenses, losses, damages and/or costs (including indirect or consequential damage) which are or may be incurred by any party as a result of the map being inaccurate, incomplete or unsuitable in any way and for any reason.

Service Layer Credits: SLIP Public Services Locate Imagery 2019. Client: Covalent Lithium. Site data, 7/2019. Created by: CJT

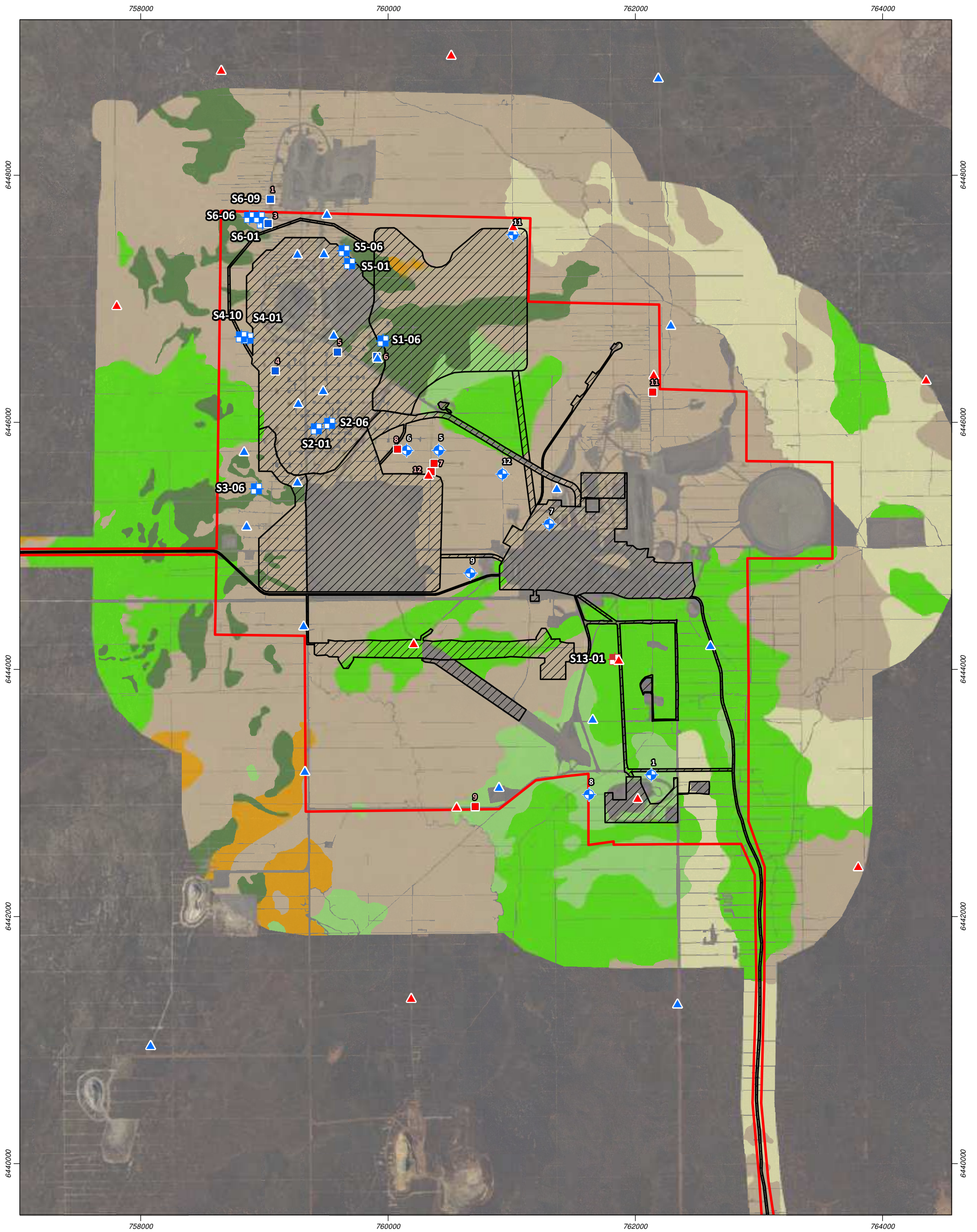
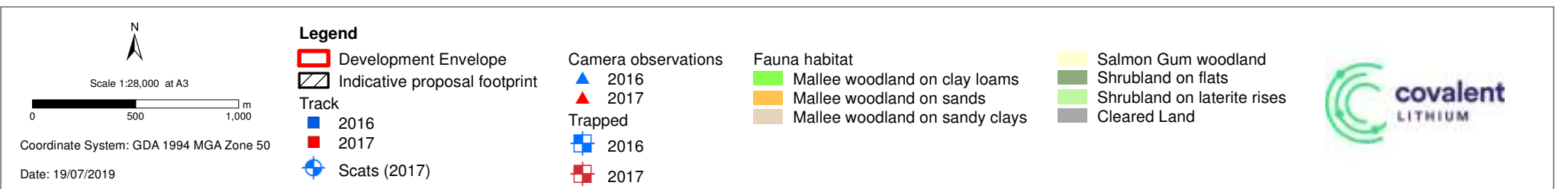


Figure 12: Chuditch records



E:\Stratagen\GIS\Consult\2017\SQM\SQM17406\01_GIS_documents\ArcMap_documents\SQM17406_G028_RevD.mxd

© 2019. Whilst every care has been taken to prepare this map, Stratagen JBS&G & Covalent Lithium makes no representations or warranties about its accuracy, reliability, completeness or suitability for any particular purpose and cannot accept liability and responsibility of any kind (whether in contract, tort or otherwise) for any expenses, losses, damages and/or costs (including indirect or consequential damage) which are or may be incurred by any party as a result of the map being inaccurate, incomplete or unsuitable in any way and for any reason.

Service Layer Credits: SLIP Public Services Locate Imagery 2019. Client: Covalent Lithium. Site data, 7/2019. Created by: cthatcher