

Mt Keith Power Station Capacity Expansion Project

Proposal Content Document

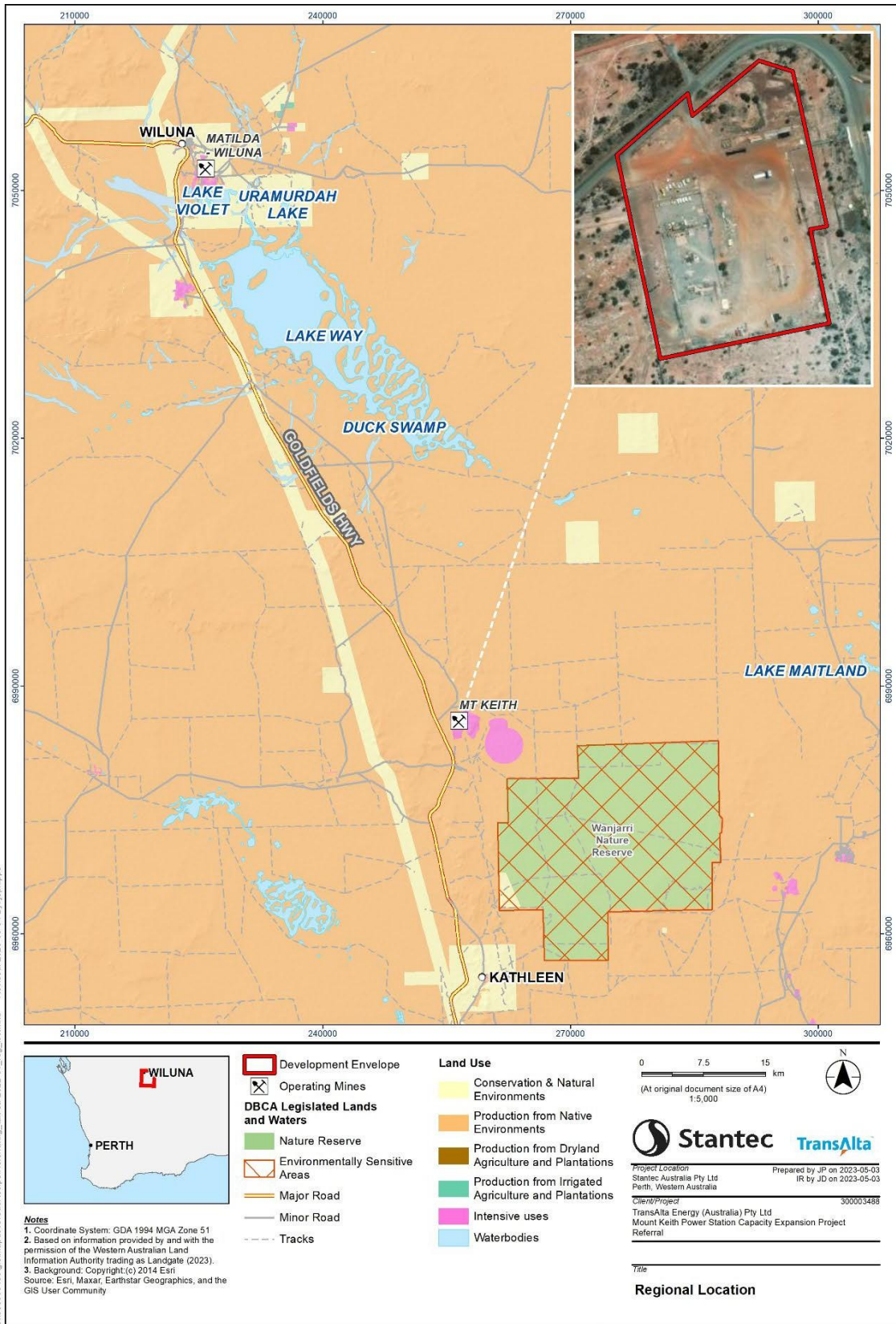
Table 1: General proposal content description

Proposal title	Mt Keith Power Station Capacity Expansion Project
Proponent name	TEC Desert Pty Ltd & TEC Desert No.2 Pty Ltd in partnership as Southern Cross Energy
Short description	The Proposal will be a component of TransAlta's existing Southern Cross Energy North (SCEN) network supplying power to BHP Nickel West (NiW) and potential third-party operators. The Proposal is to construct and operate up to 150MW of gas reciprocating engines within NiW's existing Mt Keith operations (NMK) footprint.

Table 2: Proposal content elements

Proposal element	Location / description	Maximum extent, capacity or range
Physical elements		
Gas Reciprocating engines and associated infrastructure.	Figure 1-2	Development Envelope 4.56ha
Operational elements		
Gas-fired Power Station	Within Figure 1-2	150MW
Proposal elements with greenhouse gas emissions		
Construction elements:		
Scope 1	Total GHG emissions: 31,670tCO ₂ -e	
Scope 2	None	
Scope 3	Total GHG emissions: 19,663 tCO ₂ -e	
Operation elements:		
Scope 1	Unmitigated GHG emissions up to 164,380 tCO ₂ -e per annum. Total unmitigated GHG emissions: 3,780,749 tCO ₂ -e based on an operational life to 2050.	
Scope 2	None	
Scope 3	Total GHG emissions: 286,120 tCO ₂ -e	
Other elements which affect extent of effects on the environment		
Proposal time*	Maximum project life	29 years

	Construction phase	2 years
	Operations phase	25 years
	Decommissioning phase	2 years



Disclaimer: This document has been prepared based on information provided by others as cited in the Notes section. Stantec has not verified the accuracy and/or completeness of this information and shall not be responsible for any errors or omissions which may be incorporated herein as a result. Stantec assumes no responsibility for data supplied in electronic format, and the recipient accepts full responsibility for verifying the accuracy and completeness of the data.

Figure 1-1: Regional Location

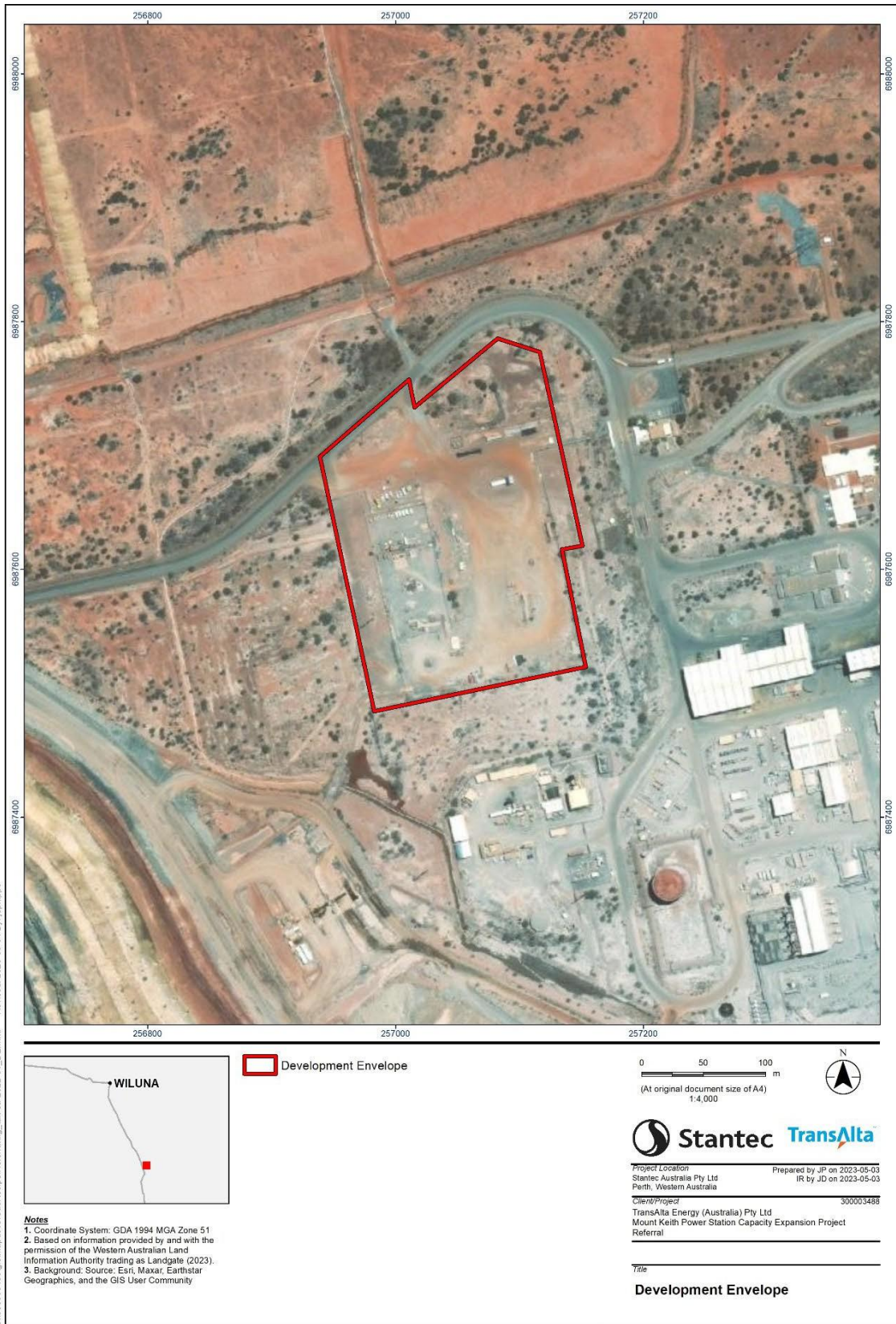


Figure 1-2: Proposed Development Envelope