

Ref: TE23003_TEC Summary Memo
Rev: 2.0

27/06/2025

1300 251 070
604 Newcastle St
Leederville WA 6007
PO Box 454
Leederville WA 6903
ABN 85 967 691 321
enquiries@taliconsultants.com.au
www.taliconsultants.com.au

Troy Collie
General Manager – Planning, Environment & Approvals
Ausgold Limited
Lvl 1, 307 Murray St
Perth WA 6000

Dear Troy,

Threatened Ecological Community (TEC) Assessment of the Jackson Bushland

Project Background

Ausgold Limited (Ausgold) is proposing to develop the Katanning Gold Project (KGP) in the Great Southern region of Western Australia (WA) within the Shire of Katanning, approximately 275 kilometres (km) southeast of Perth and 36 km northeast of Katanning.

The KGP is located within the Avon Wheatbelt 2 (AW2) subregion as described by the Interim Biogeographic Regionalisation for Australia (IBRA) (Department of Climate Change Energy the Environment and Water (DCCEE) 2025). It is largely situated on already cleared farmland with some remnant native vegetation patches. The regional vegetation of the KGP location is described as '*Proteaceous scrub heaths, rich in endemics, on residual lateritic uplands and derived sandplains; mixed Eucalypt, Allocasuarina huegeliana and Jam-York Gum woodlands on Quaternary alluvials and eluvials*' (Beecham B, 2001). Ausgold has commissioned several flora and vegetation surveys of their Development Envelope (DE) and adjacent areas to inform the environmental approvals process. The Critically Endangered (CR) listed *Eucalypt Woodlands of the Western Australian Wheatbelt Ecological Community* (EWTEC), under the *Environment Protection and Biodiversity Conservation* (EPBC) Act 1999, has been identified as occurring inside and outside the DE.

As Ausgold is preparing to submit their environmental referrals Talis Consultants (Talis) has been engaged to consolidate all known information about the EWTEC occurrence within the DE and in particular, areas to be cleared for the mine development into this summary memo.

TEC Background

The EWTEC was listed as CR under the EPBC Act in 2015 and is described and defined in the *Approved Conservation Advice (including listing advice) for the Eucalypt Woodlands of the Western Australian Wheatbelt* (Department of the Environment and Energy (DoTEE) 2015), herein after referred to as the Approved Conservation Advice. In WA under the *Biodiversity and Conservation* (BC) Act 2016 the EWTEC is listed as a Priority 3 (Department of Biodiversity Conservation and Attractions (DBCA) 2023). Furthermore, the following State listed priority ecological communities can form part of the EPBC listed EWTEC (*ibid*):

- Red Morrel (*Eucalyptus longicornis*) Woodlands of the Wheatbelt (Priority 1);
- Brown Mallet (*Eucalyptus astringens*) communities in the western Wheatbelt on alluvial flats (previously 'Beaufort River Flats') (Priority 1);
- Yate (*Eucalyptus occidentalis*) dominated alluvial claypans of the Jingalup Soil System (Priority 2); and
- Plant assemblages of the Wongan Hills System (Priority 4).

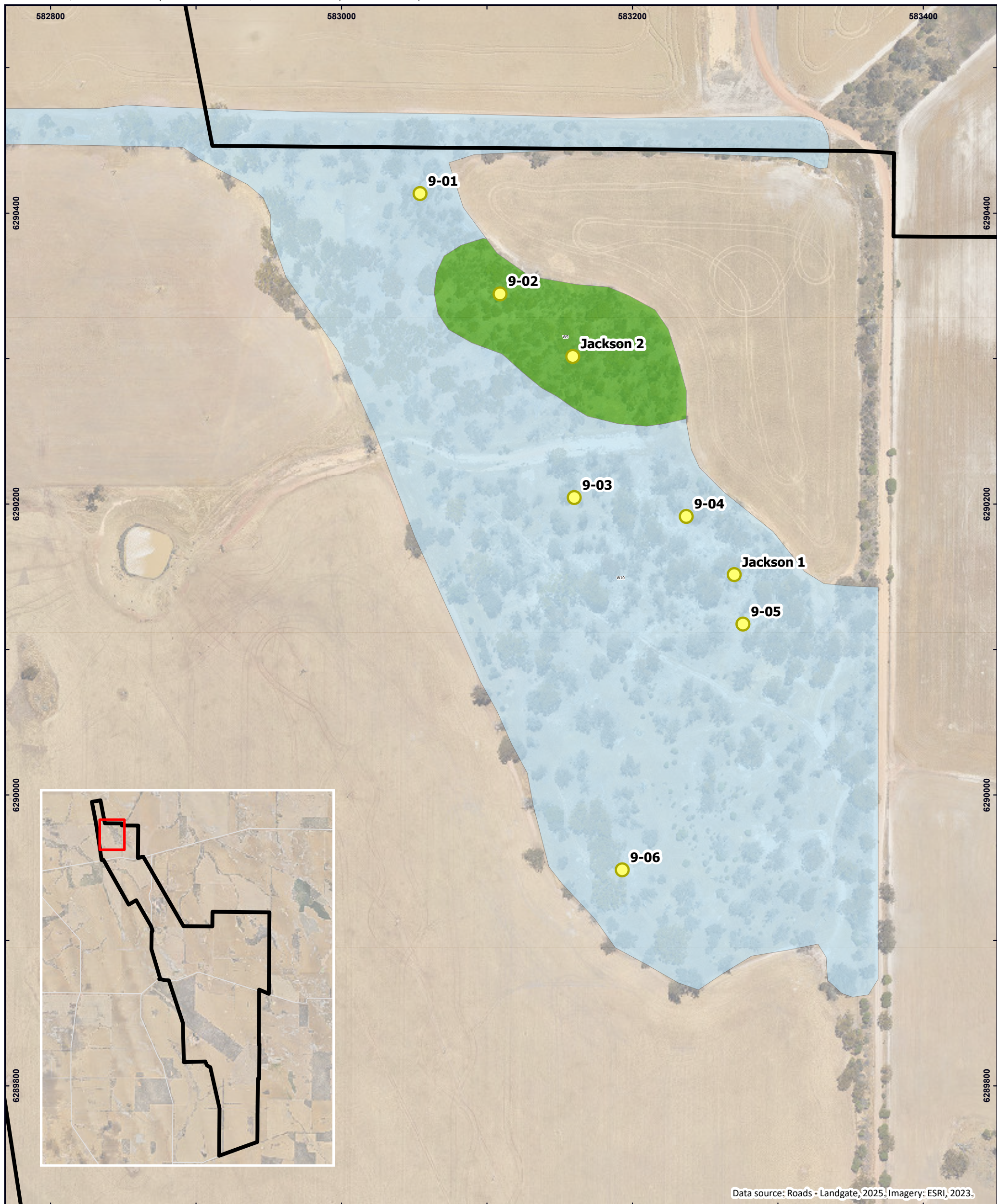
Jackson Bushland Background

Mattiske Consulting (Mattiske) and Botanica Consulting have undertaken flora and vegetation surveys over different parts of Ausgold's DE and adjacent areas. All findings are consolidated in Mattiske's *Flora & Vegetation Assessment for Ausgold Exploration Pty Ltd, Katanning Gold Project, Katanning (2025)*.

The Jackson Bushland (13.65 ha in size) in the north of the DE (Figure 1) has been identified as the only remnant vegetation patch within the DE that is representative of the EWTEC and proposed to be cleared for the mine development (Mattiske 2025). The flora and vegetation of the Jackson Bushland was initially assessed by Mattiske in 2019 as being representative of the EWTEC and later subject to a detailed flora and vegetation assessment (Mattiske Consulting Pty Ltd, 2019, 2021). Mattiske established six quadrats within the Jackson Bushland and two TEC assessment points (Figure 1). Two vegetation types were identified from the Jackson Bushland:

- W9: Mid Mallee woodland of mixed *Eucalyptus* species (sp.) with isolated clumps of *Eucalyptus* sp. trees over grassland of *Austrostipa* sps, * (*denotes an introduced species) *Ehrharta longiflora* and other mixed grass species with isolated clumps of low mixed forbs on slopes with occasional outcrops and grey-brown clay loam soils; and
- W10: Mid woodland of *Eucalyptus wandoo* and occasional *E. salmonophloia* over open grassland of **Bromus diandrus*, **Vulpia muralis* and mixed *Austrostipa* sps with isolated clumps of low **Ursinia anthemoides* and *Lomandra* sps forbs on lower and mid slopes with rare laterite outcrops on grey-caramel clay loam soils.

The Jackson Bushland is surrounded by pasture fields, potentially accessible to livestock for grazing and used by the local farmers evident by vehicle tracks and rubbish.



Data source: Roads - Landgate, 2025. Imagery: ESRI, 2023.

LEGEND Mine Development Envelope Flora Sites Vegetation Types (Mattiske, 2025) W9 - Open Woodland of Eucalyptus salmonophloia, Eucalyptus longicornis Eucalyptus wandoo over low mixed Eucalyptus mallee species over Daviesia articulata over mixed low herbs and grasses on clay W10 - Open Woodland of Eucalyptus wandoo, Eucalyptus salmonophloia, Eucalyptus kondinensis and other low mallees over Acacia acuminata, Acacia erinacea, Acacia saligna, Maireana brevifolia over		LOCALITY 	JACKSON BUSHLAND VEGETATION Katanning Gold Project TEC Assessment of the Jackson Bushland Summary Memo Ausgold Limited Scale @ A3: 1:2,500 Coordinate System: GDA2020 MGA Zone 50 Prepared: E Jackson Reviewed: L Carlsson Project: TE23003 Revision: A Figure 1-1 Date: 25/06/2025
---	--	-------------------------	---

TEC Assessment

Table 1 - 3 summarises the current values of the Jackson Bushland against the Key Diagnostic, Contra Criteria and Condition Thresholds outlined in the Approved Conservation Advice (DotEE 2015). The responses as applicable to the Jackson Bushland are based on the flora and vegetation report (Mattiske Consulting Pty Ltd, 2019, 2021, 2025) and a site visit conducted by Talis' Senior Consultant - Biodiversity on the 18 of June 2025 and displayed on Figure 2.

Table 1: An assessment of the Jackson Bushland against the Key Diagnostic Criteria of the TEC as outlined in the Approved Conservation Advice (DoTEE 2015)

Key Diagnostic Criteria	Jackson Bushland
<p>The remnant patch of vegetation is located within the following IBRA subregions:</p> <ol style="list-style-type: none"> 1. Avon Wheatbelt 1 (AW01 Merredin) 2. Avon Wheatbelt 2 (AW02 Katanning) 3. Mallee 2 (MAL02 Western Mallee) 4. Jarrah Forest 1 (JAF01 Northern Jarrah Forest)¹ 5. Jarrah Forest 2 (JAF02 Jarrah Forest)¹ 	<p>The entire KGP is located within the Avon Wheatbelt 2 (AW02) subregion of the IBRA classification.</p> <p>Criteria met.</p>
<p>The vegetation type has a woodland structure with a minimum crown cover of the tree canopy at 10%.</p>	<p>The Jackson Bushland consists of two vegetation type one vegetation type (W10) meets this criterion.</p> <p>Criteria met for a portion of the Jackson Bushland.</p>
<p>Dominant or co-dominant Eucalyptus species in tree form (i.e. have a single trunk) as per Table 2a of the Approved Conservation Advice.</p>	<p>The dominant species in the Jackson Bushland are <i>Eucalyptus wandoo</i> and occasional <i>E. salmonophloia</i> (Mattiske 2025). In more detail, Terrestrial Ecosystems undertook a targeted fauna survey identifying 429 trees with a diameter at breast height (DBH) of 300 or 500 mm as required by different species from the Jackson Bushland (Terrestrial Ecosystems 2022). In addition to <i>E. wandoo</i> and <i>E. salmonophloia.</i>, <i>E. longicornis</i> was also recorded (<i>ibid</i>).</p> <p>Criteria met</p>

¹ if the remnant vegetation patch is located within the Jarrah Forest it has to be located adjacent to the Avon Wheatbelt IBRA region boundary and receive less than 600 mm mean annual rainfall.

<p>The understorey is made up from a combination of native grasses, herbs and/or shrubs.</p>	<p>While native grasses, herbs/forbs are present within W10, introduced species are also present and in some areas more dominant (Mattiske 2021 and 2025). Criteria partially met.</p>
--	---

Table 2: An assessment of the Jackson Bushland against the Contra Criteria of the TEC as outlined in the Approved Conservation Advice (DoTEE 2015)

Contra Criteria	Jackson Bushland
<p>Eucalypts in a Mallee growth form are dominant in the canopy.</p>	<p>Contra criteria only applicable to a small portion of the Jackson Bushland (W9).</p>
<p>Non Eucalypts i.e. <i>Acacia acuminata</i> or <i>Allocasuarina huegeliana</i> are dominant in the canopy.</p>	<p>Contra criteria not applicable.</p>
<p>Shrub-/herblands with a very sparse tree canopy cover naturally occurring or shaped through the presence of ongoing disturbances.</p>	<p>Contra criteria not applicable.</p>
<p>Woodlands of the same composition and structure but occurring in the Coolgardie, Esperance Sandplains, Yalgoo or Geraldton Sandplains IBRA region.</p>	<p>Contra criteria not applicable.</p>
<p>Woodlands dominated by Eucalypts but limited to granite outcrops and/or rocky rises landforms.</p>	<p>Contra criteria not applicable.</p>

The vegetation condition of the entire Jackson Bushland has been mapped as ‘Degraded’ (Mattiske 2025). Degraded condition is described as ‘*Basic vegetation structure severely impacted by disturbances. Scope for regeneration but not to a state approaching good condition without intensive management*’ (Keighery, 1994). Weed diversity and abundance, existing tracks and historical accumulation of sheep skeletons are the justification for this vegetation condition. Given the above information Table 1-3 summarises the condition of the Jackson Bushland against Category D for patches only (Degraded to Good) (DoTEE 2015).

Table 3: An Assessment of the Jackson Bushland against the Key Diagnostic Criteria of the TEC as outlined in the Approved Conservation Advice (DoTEE 2015)

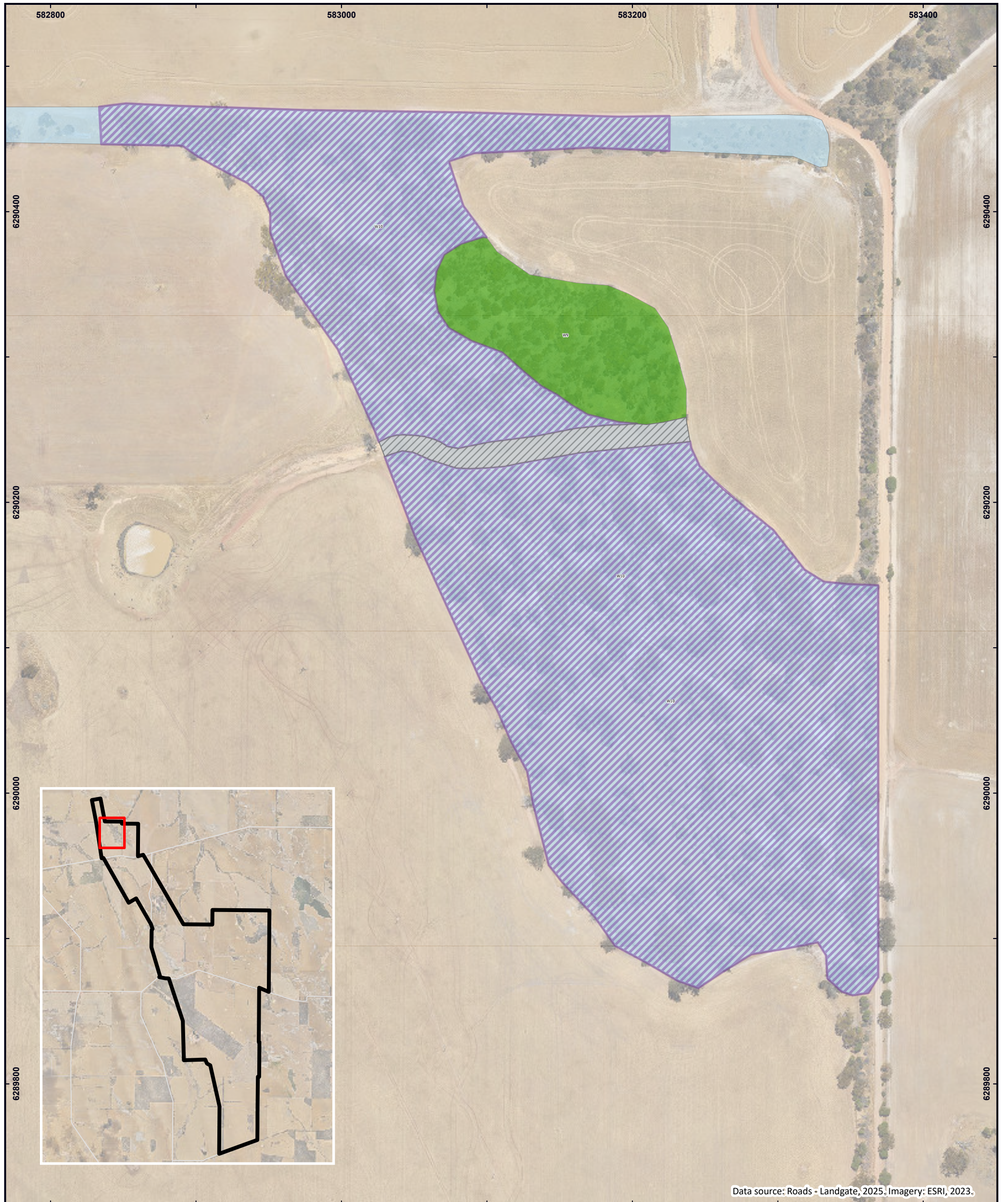
Cover of exotic plants (weeds)	Mature trees	Minimum patch size (non-roadside patches)	Minimum patch width (roadsides only)
Category D: Patches likely to correspond to a condition of Degraded to Good (Keighery, 1994).			
Exotic plant species account for more than 50 to 70 % of total vegetation cover in the understorey layers (i.e. below the tree canopy).	Mature trees are present with at least 5 trees per 0.5 ha.	5 ha or more	5 m or more
Cover of introduced species was variable throughout the Jackson Bushland (Mattiske 2019 and 2021). The section north of the drainage line being less disturbed and with more tree canopy cover than the section to the south (Image 1 and 2).	Yes	The native vegetation within Jackson Bushland covers 13.1 ha.	Not applicable Jackson Bushland is not roadside vegetation.



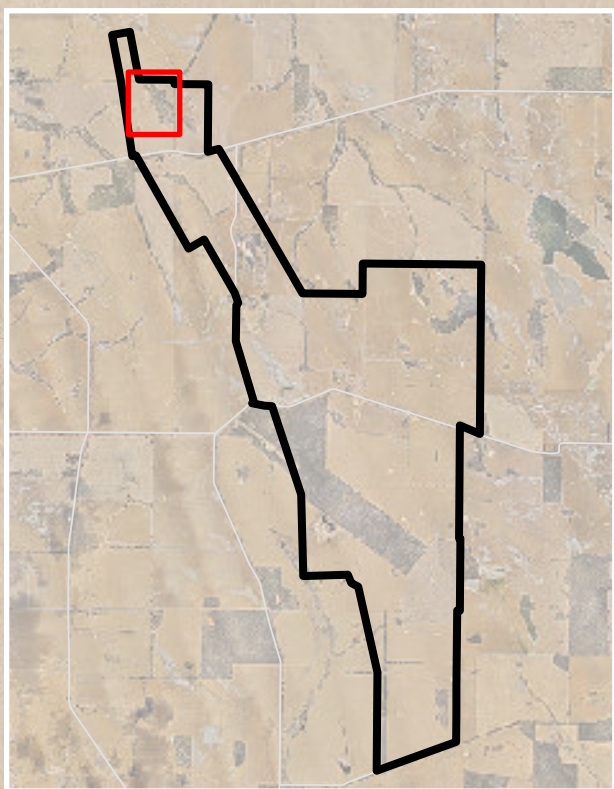
Image 1



Image 2



Data source: Roads - Landgate, 2025. Imagery: ESRI, 2023.



LEGEND

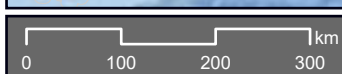
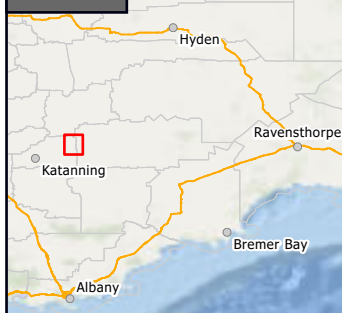
Vegetation Types (Mattiske, 2025)

- W9 - Open Woodland of *Eucalyptus salmonophloia*, *Eucalyptus longicornis*
- Eucalyptus wandoo* over low mixed *Eucalyptus mallee* species over *Daviesia articulata* over mixed low herbs and grasses on clay
- W10 - Open Woodland of *Eucalyptus wandoo*, *Eucalyptus salmonophloia*, *Eucalyptus kondinensis* and other low mallees over *Acacia acuminata*, *Acacia erinacea*, *Acacia saligna*, *Maireana brevifolia* over

- Mine Development Envelope
- Jackson Bushland TEC (Talis, 2025)
- Drainage Line
- Waypoints
- Tracks

© Talis Consultants Pty Ltd ("Talis"). Copyright in the drawings, information and data recorded in this document ("the information") is the property of Talis. This document and the information are solely for the use of the authorised recipient and this document may not be used, transferred or reproduced in whole or part for any purpose other than that which it is supplied by Talis without written consent. Talis makes no representation, undertakes no duty and accepts no responsibility to any third party who may use or rely upon this document or the information.

LOCALITY

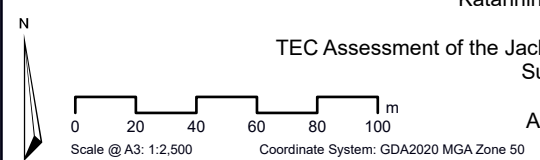


JACKSON BUSHLAND THREATENED ECOLOGICAL COMMUNITY

Katanning Gold Project

TEC Assessment of the Jackson Bushland Summary Memo

Ausgold Limited



Prepared:	E Jackson
Reviewed:	L Carlsson
Project:	TE23003
Revision:	A Figure 1-2
Date:	25/06/2025

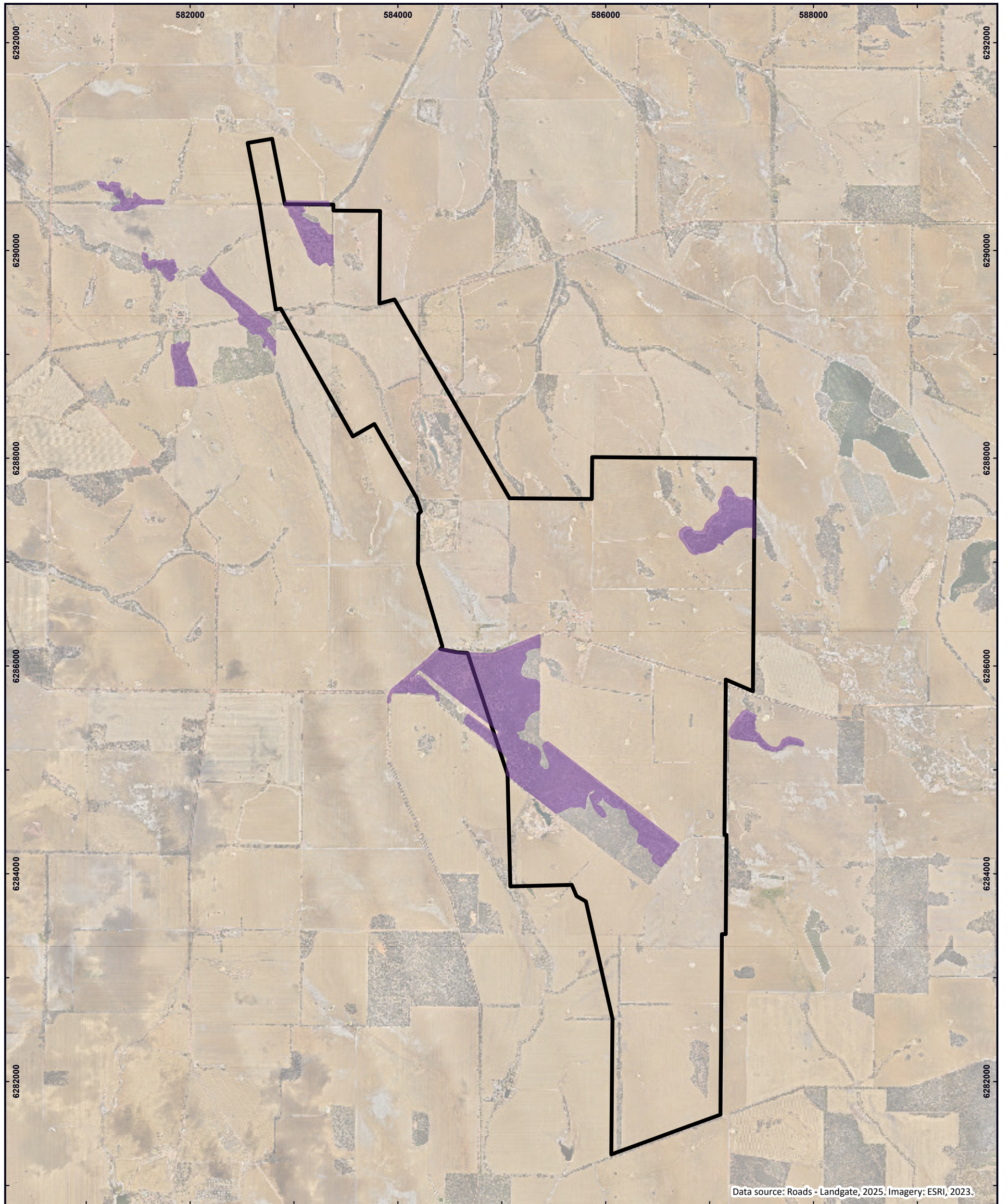


Conclusion

A portion of the Jackson Bushland associated with W10 (12.07 ha) is considered to be representative of the EWTEC. Of this portion, 11.33 ha is vested within the DE. The value of the Jackson Bushland lies within the presence of the mature trees and the size of the patch. No Commonwealth or State conservation-listed flora and/or fauna species has been recorded from within the Jackson Bushland (Mattiske, 2025 and Terrestrial Ecosystems, 2025).

Further remnant vegetation patches representative of the EWTEC have been identified by Mattiske within and outside the DE (2025) (Figure 3). Within the DE 121.42 ha have been mapped as the EWTEC. Of these 96.54 ha are in Very Good vegetation condition and 24.88 ha are in Degraded vegetation condition (Mattiske 2025).

The 11.33 ha of the EWTEC in Degraded condition within the Jackson Bushland will be taken directly through clearing (8.48 ha) or indirectly through dust and other secondary impacts. Ausgold is not intending to develop the 96.54 ha in Very Good condition and furthermore intends to vest all EWTEC in Very Good condition within the DE in two Mine Exclusion Zones.




Data source: Roads - Landgate, 2025. Imagery: ESRI, 2023.

<p>LEGEND</p> <ul style="list-style-type: none"> Mine Development Envelope Threatened Ecological Community (Mattiske, 2025) <p>Western Australian Roads</p> <ul style="list-style-type: none"> Minor Road <p><small>© Talis Consultants Pty Ltd ("Talis"). Copyright in the drawings, information and data recorded in this document ("the information") is the property of Talis. This document and the information are solely for the use of the authorised recipient and this document may not be used, transferred or reproduced in whole or part for any purpose other than that which it is supplied by Talis without written consent. Talis makes no representation, undertakes no duty and accepts no responsibility to any third party who may use or rely upon this document or the information.</small></p>	<p>LOCALITY</p> <p>0 100 200 300 km</p>	<p>REGIONAL TEC OCCURRENCES (MATTISKE, 2025)</p> <p>Katanning Gold Project</p> <p>TEC Assessment of the Jackson Bushland Summary Memo</p> <p>Ausgold Limited</p> <p>Prepared: E Jackson Reviewed: L Carlsson Project: TE23003 Revision: A Figure 1-3 Date: 27/06/2025</p> <p>Scale @ A3: 1:35,000 Coordinate System: GDA2020 MGA Zone 50</p>
--	--	--

References

- Beecham B. (2001). Avon Wheatbelt 2 (AW2 - Re-juvenated Drainage subregion). In *A Biodiversity Audit of Western Australia's 53 Biogeographical Subregions in 2002*.
- Department of Biodiversity Conservation and Attractions. (2023). *Priority Ecological Communities for Western Australia Version 35*. <https://www.dbca.wa.gov.au/wildlife-and-ecosystems/threatened-ecological-communities>
- Department of Climate Change Energy the Environment and Water. (2025). *Australia's bioregions (IBRA)*. <https://www.dcceew.gov.au/environment/land/nrs/science/ibra>
- Department of the Environment and Energy. (2015). *Approved Conservation Advice (including listing advice) for the Eucalypt Woodlands of the Western Australian Wheatbelt*.
- Environmental Protection Authority. (2016). *Technical Guidance - Flora and Vegetation Surveys for Environmental Impact Assessment*. <https://www.epa.wa.gov.au/policies-guidance/technical-guidance-flora-and-vegetation-surveys-environmental-impact-assessment>
- Keighery, B. (1994). *Bushland Plant Survey: a Guide to Plant Community Survey for the Community*.
- Mattiske Consulting Pty Ltd. (2019). *Memorandum - Katanning Gold Project Threatened Ecological Community Survey*.
- Mattiske Consulting Pty Ltd. (2021). *Assessment of Flora and Vegetation Values Jinkas-Datatine Survey Area Badgebup, WA*.
- Mattiske Consulting Pty Ltd. (2025). *Flora & Vegetation Assessment for Ausgold Exploration Pty Ltd, Katanning Gold Project, Katanning*.
- Terrestrial Ecosystems. (2022). *Black-Cockatoo Tree Assessment and Camera Trapping for the Jackson Project Area*.

DOCUMENT CONTROL					
Version	Description	Date	Author	Reviewer	Approver
0.1	Internal Review	25/06/2025	LC	LS	AJM
1.0	Reviewed and Approved	27/06/2025	LC	LS	AJM
1.1	Internal Review after updates	30/06/2025	LC	LS	
2.0	Second release to client	30/06/2025	LC	LS	LS
Approval for Release					
Name	Position	File Reference			
Louisa Carlsson	Senior Environmental Consultant – Biodiversity	TE23003_TEC Summary Memo_2.0			
Signature					
<p>Copyright of this document or any part of this document remains with Talis Consultants Pty Ltd and cannot be used, transferred or reproduced in any manner or form without prior written consent from Talis Consultants Pty Ltd.</p>					