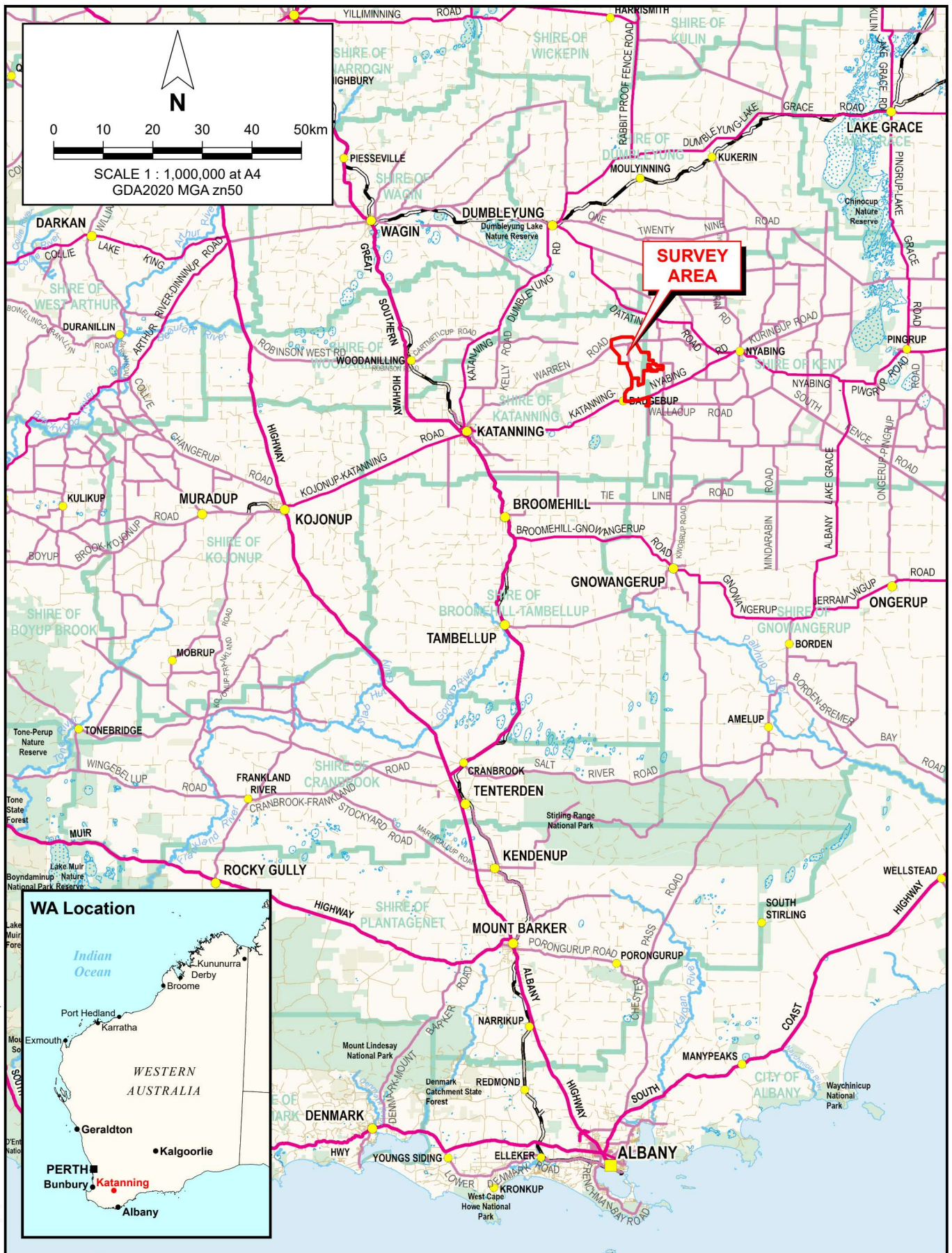


# Figures

**Basic and Targeted Vertebrate Fauna Survey and Risk Assessment  
Katanning Gold Project**





**Figure 1**



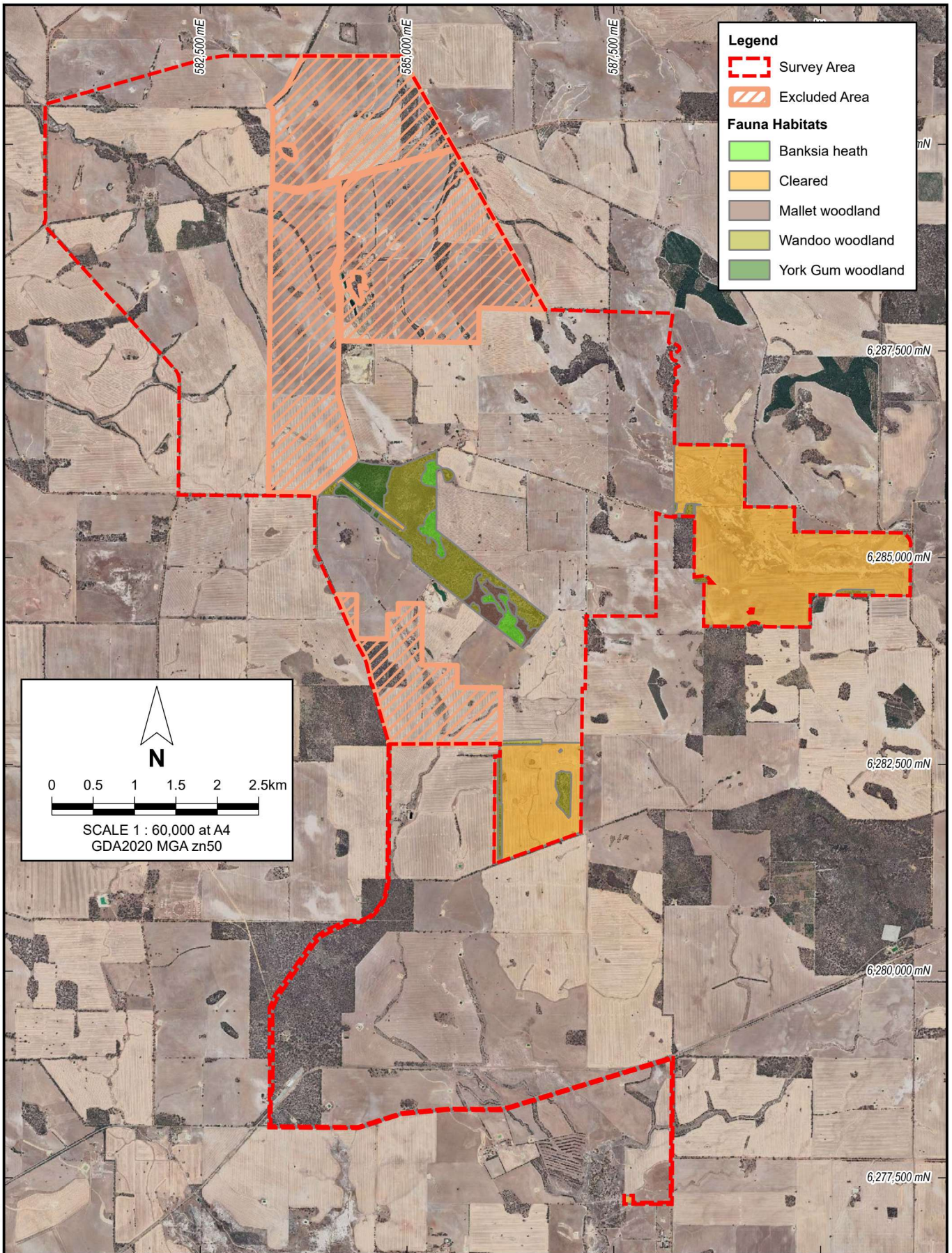
Drawn: G. Thompson

Date: 3 Apr 2025

**REGIONAL LOCATION**

Job: 2024-0165

PINPOINT CARTOGRAPHICS (08) 9562 7136 2024-0165-f01.aprx




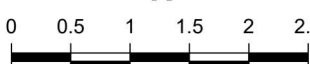
**Legend**

- Survey Area
- Excluded Area

**Fauna Habitats**

- Banksia heath
- Cleared
- Mallet woodland
- Wandoo woodland
- York Gum woodland

  
**N**

  
 0 0.5 1 1.5 2 2.5km

SCALE 1 : 60,000 at A4  
 GDA2020 MGA zn50

PINPOINT CARTOGRAPHICS (08) 9562 7136  
 2024-0165-f02.aprx



**TERRESTRIAL ECOSYSTEMS**

Drawn: G. Thompson      Date: 3 Apr 2025

Ausgold Exploration Pty Ltd  
 BASIC AND TARGETED VERTEBRATE FAUNA SURVEY AND  
 RISK ASSESSMENT FOR THE KATANNING GOLD PROJECT

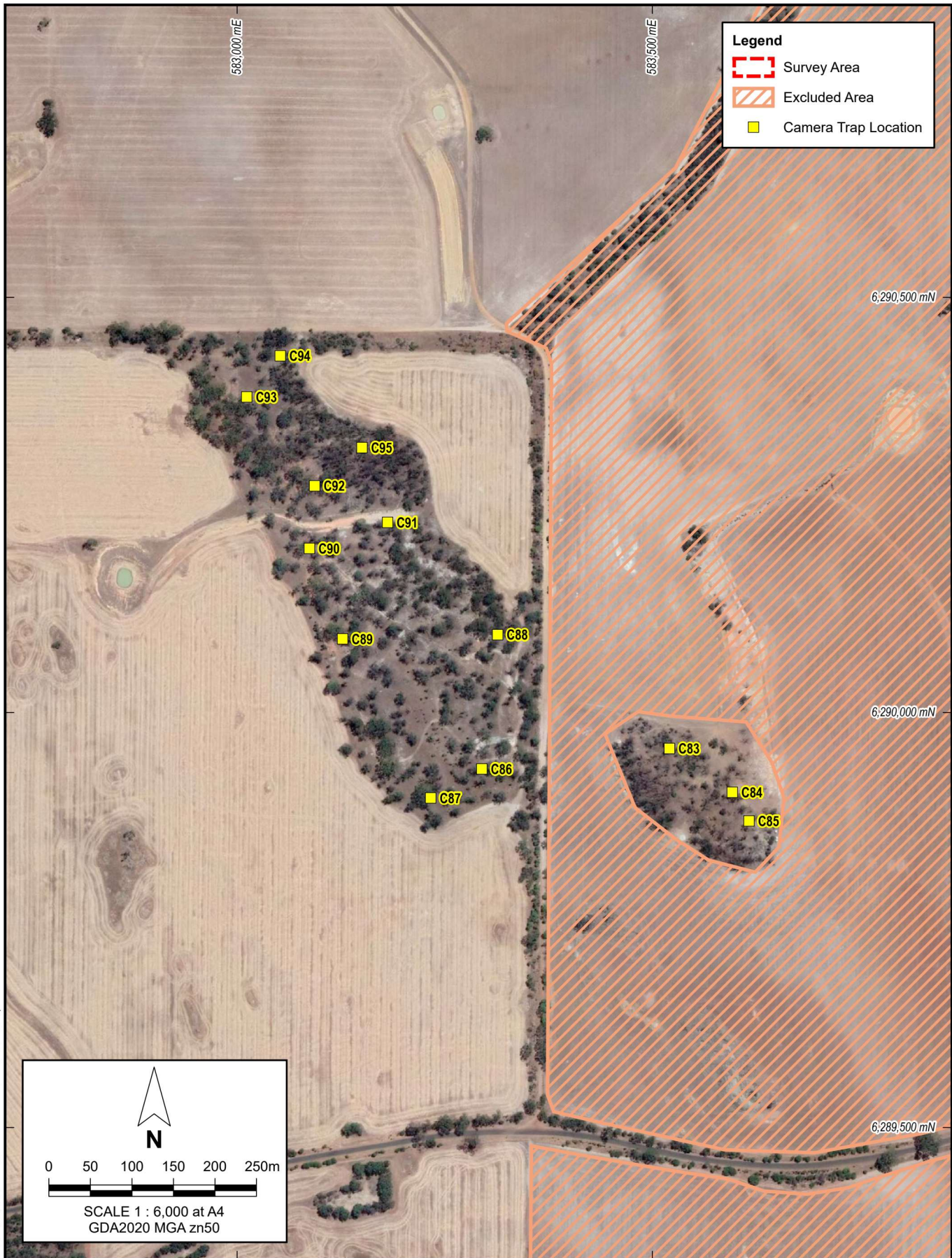
---

**PROJECT AREA SHOWING FAUNA HABITATS**

**Figure 2**

---

Job: 2024-0165



PINPOINT CARTOGRAPHICS (08) 9562 7136 2024-0165-f03.aprx

**TERRESTRIAL ECOSYSTEMS**

Drawn: G. Thompson      Date: 3 Apr 2025

Ausgold Exploration Pty Ltd  
 BASIC AND TARGETED VERTEBRATE FAUNA SURVEY AND  
 RISK ASSESSMENT FOR THE KATANNING GOLD PROJECT

**CAMERA TRAP LOCATIONS**

**Figure 3**

Job: 2024-0165



PINPOINT CARTOGRAPHICS [08] 9562 7136 2024-0165-f04.aprx



**TERRESTRIAL ECOSYSTEMS**

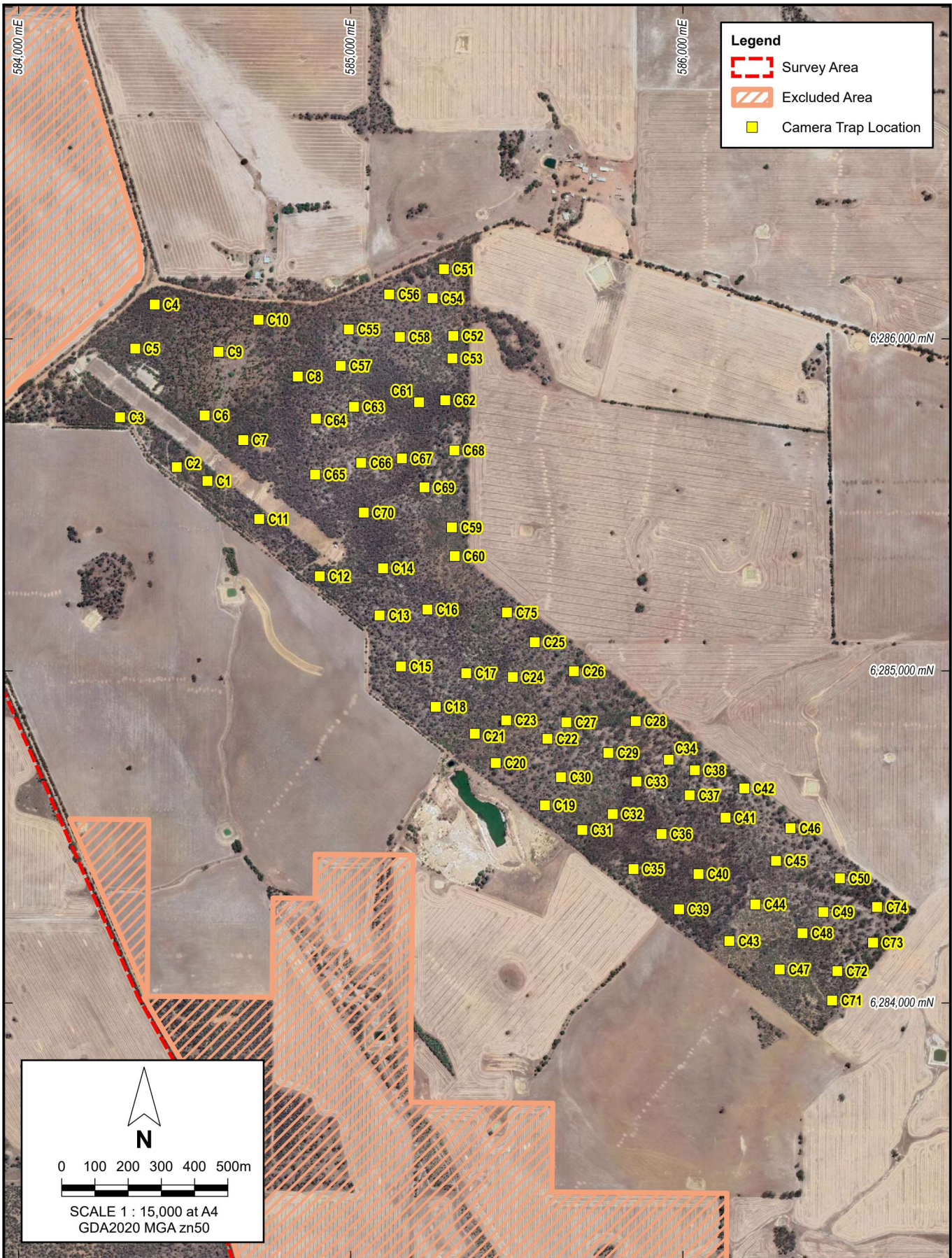
Drawn: G. Thompson      Date: 3 Apr 2025

Ausgold Exploration Pty Ltd  
 BASIC AND TARGETED VERTEBRATE FAUNA SURVEY AND  
 RISK ASSESSMENT FOR THE KATANNING GOLD PROJECT

**CAMERA TRAP LOCATIONS**

**Figure 4**

Job: 2024-0165



**Legend**

- Survey Area
- Excluded Area
- Camera Trap Location

N

0 100 200 300 400 500m

SCALE 1 : 15,000 at A4  
GDA2020 MGA zn50

PINPOINT CARTOGRAPHICS (08) 9562 7136 2024-0165-f05.aprx

**TERRESTRIAL ECOSYSTEMS**

Drawn: G. Thompson      Date: 3 Apr 2025

Ausgold Exploration Pty Ltd  
 BASIC AND TARGETED VERTEBRATE FAUNA SURVEY AND  
 RISK ASSESSMENT FOR THE KATANNING GOLD PROJECT

**CAMERA TRAP LOCATIONS**

**Figure 5**

Job: 2024-0165



PINPOINT CARTOGRAPHICS (08) 9562 7136 2024-0165-f06.aprx

**TERRESTRIAL ECOSYSTEMS**

Drawn: G. Thompson      Date: 3 Apr 2025

Ausgold Exploration Pty Ltd  
 BASIC AND TARGETED VERTEBRATE FAUNA SURVEY AND  
 RISK ASSESSMENT FOR THE KATANNING GOLD PROJECT

**CAMERA TRAP LOCATIONS**


**Figure 6**


Job: 2024-0165



**Legend**

- Survey Area
- Excluded Area
- Camera Trap Location

  
**N**

  
 0    50    100    150    200m

SCALE 1 : 5,000 at A4  
 GDA2020 MGA zn50

PINPOINT CARTOGRAPHICS [08] 9562 7136 2024-0165-07.aprx



**TERRESTRIAL ECOSYSTEMS**

Drawn: G. Thompson      Date: 3 Apr 2025




Ausgold Exploration Pty Ltd  
 BASIC AND TARGETED VERTEBRATE FAUNA SURVEY AND  
 RISK ASSESSMENT FOR THE KATANNING GOLD PROJECT

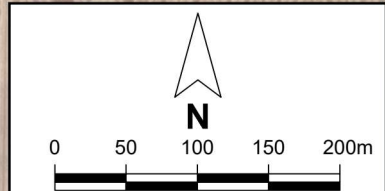
CAMERA TRAP LOCATIONS

Figure 7

Job: 2024-0165

**Legend**

-  Survey Area
-  Excluded Area
-  Camera Trap Location

SCALE 1 : 5,000 at A4  
GDA2020 MGA zn50

PINPOINT CARTOGRAPHICS (08) 9562 7136 2024-0165-f08.aprx



**TERRESTRIAL ECOSYSTEMS**

Drawn: G. Thompson      Date: 3 Apr 2025

Ausgold Exploration Pty Ltd  
 BASIC AND TARGETED VERTEBRATE FAUNA SURVEY AND  
 RISK ASSESSMENT FOR THE KATANNING GOLD PROJECT

**CAMERA TRAP LOCATIONS**

**Figure 8**

Job: 2024-0165



PINPOINT CARTOGRAPHICS (08) 9562 7136 2024-0165-109.aprx

**TERRESTRIAL ECOSYSTEMS**

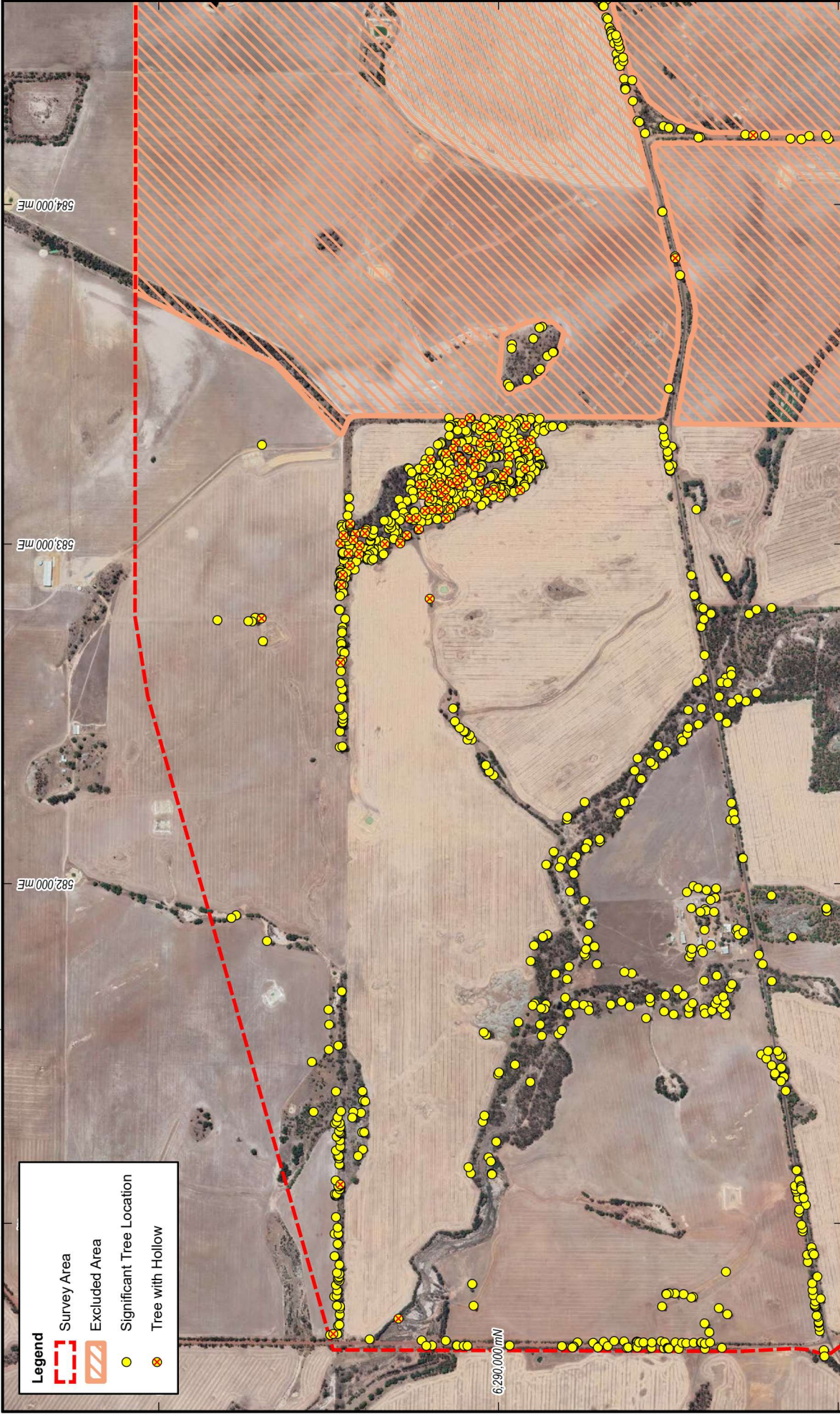
Drawn: G. Thompson      Date: 3 Apr 2025

Ausgold Exploration Pty Ltd  
 BASIC AND TARGETED VERTEBRATE FAUNA SURVEY AND  
 RISK ASSESSMENT FOR THE KATANNING GOLD PROJECT

**CAMERA TRAP LOCATIONS**

**Figure 9**

Job: 2024-0165



**Legend**

- Survey Area
- Excluded Area
- Significant Tree Location
- Tree with Hollow

0 100 200 300 400 500m

SCALE 1 : 15,000 at A4  
GDA2020 MGA zn50

**TERRESTRIAL ECOSYSTEMS**

Drawn: G. Thompson      Date: 3 Apr 2025

Ausgold Exploration Pty Ltd  
 BASIC AND TARGETED VERTEBRATE FAUNA SURVEY AND  
 RISK ASSESSMENT FOR THE KATANNING GOLD PROJECT

**SIGNIFICANT TREES**

**Figure 10**



**Legend**

-  Survey Area
-  Excluded Area
-  Significant Tree Location
-  Tree with Hollow

0 100 200 300 400 500m



SCALE 1 : 15,000 at A4  
GDA2020 MGA zn50




**TERRESTRIAL ECOSYSTEMS**

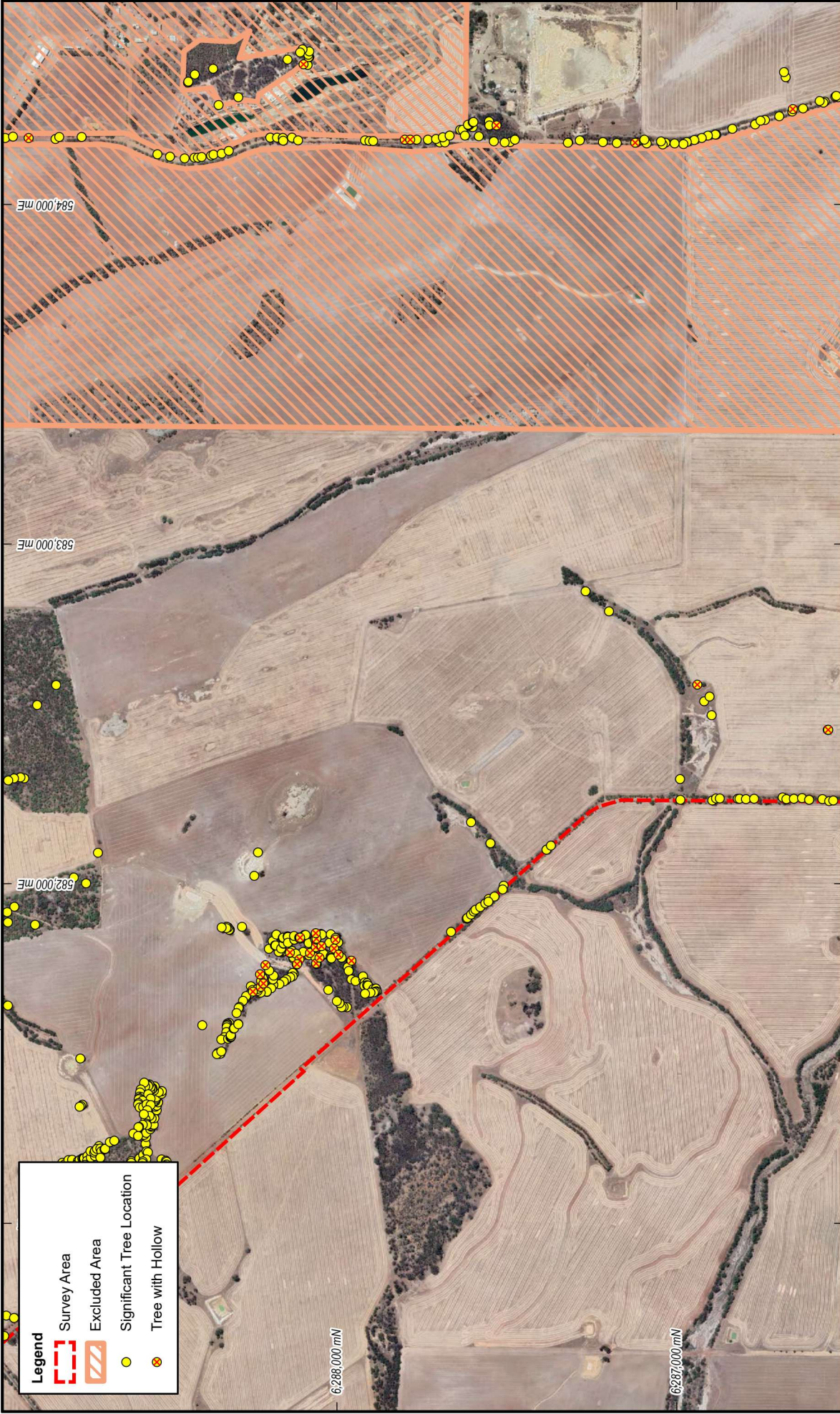
Drawn: G. Thompson  
Date: 3 Apr 2025

Ausgold Exploration Pty Ltd  
BASIC AND TARGETED VERTEBRATE FAUNA SURVEY AND  
RISK ASSESSMENT FOR THE KATANNING GOLD PROJECT

**SIGNIFICANT TREES**

**Figure 11**

PINPOINT CARTOGRAPHICS (08) 9562 7136 2024-0165-f12.aprx



**Legend**

-  Survey Area
-  Excluded Area
-  Significant Tree Location
-  Tree with Hollow



SCALE 1 : 15,000 at A4  
GDA2020 MGA zn50



**TERRESTRIAL ECOSYSTEMS**

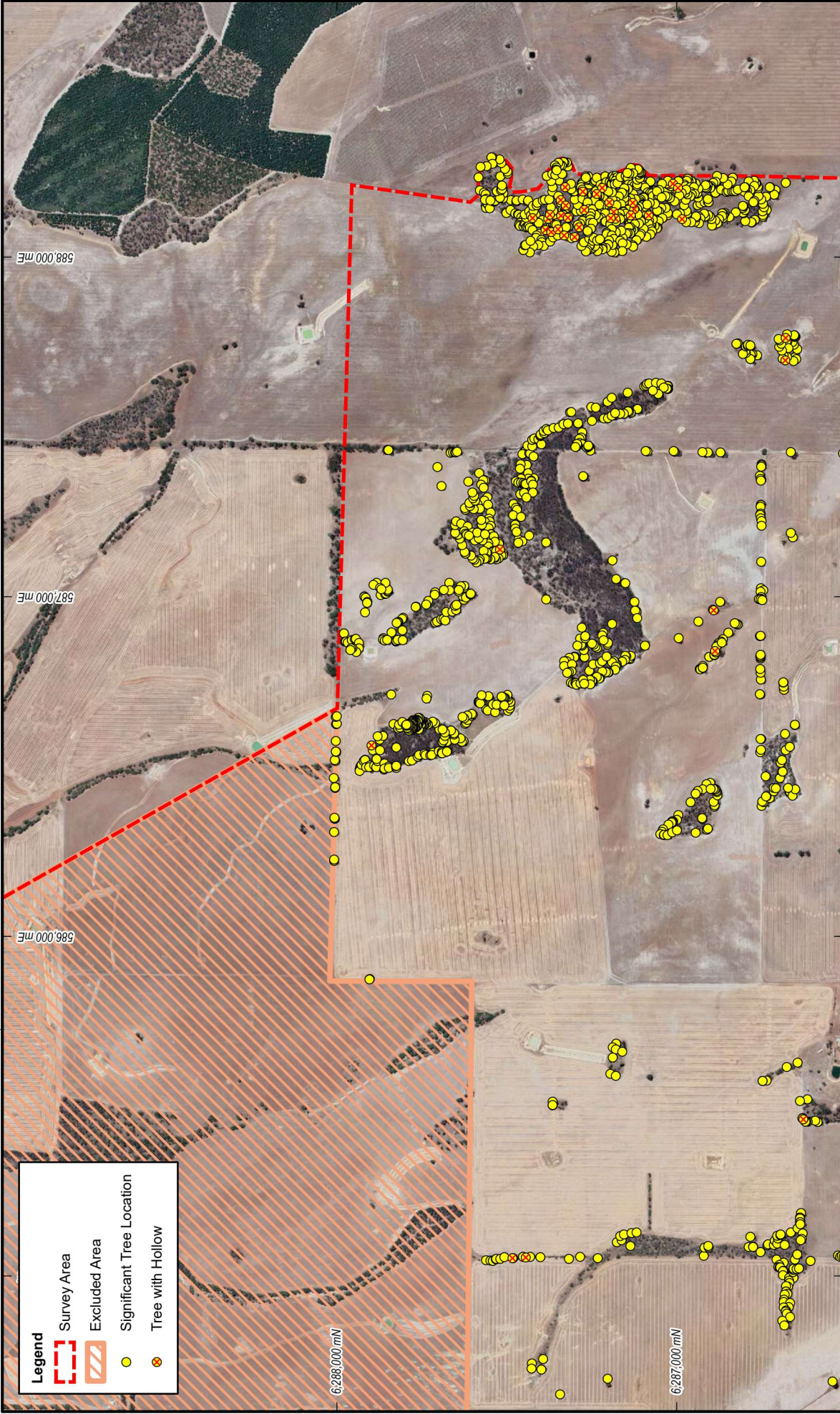
Drawn: G. Thompson  
Date: 3 Apr 2025

Ausgold Exploration Pty Ltd  
BASIC AND TARGETED VERTEBRATE FAUNA SURVEY AND  
RISK ASSESSMENT FOR THE KATANNING GOLD PROJECT

**SIGNIFICANT TREES**

**Figure 12**

Job: 2024-0165



Ausgold Exploration Pty Ltd  
 BASIC AND TARGETED VERTEBRATE FAUNA SURVEY AND  
 RISK ASSESSMENT FOR THE KATANNING GOLD PROJECT

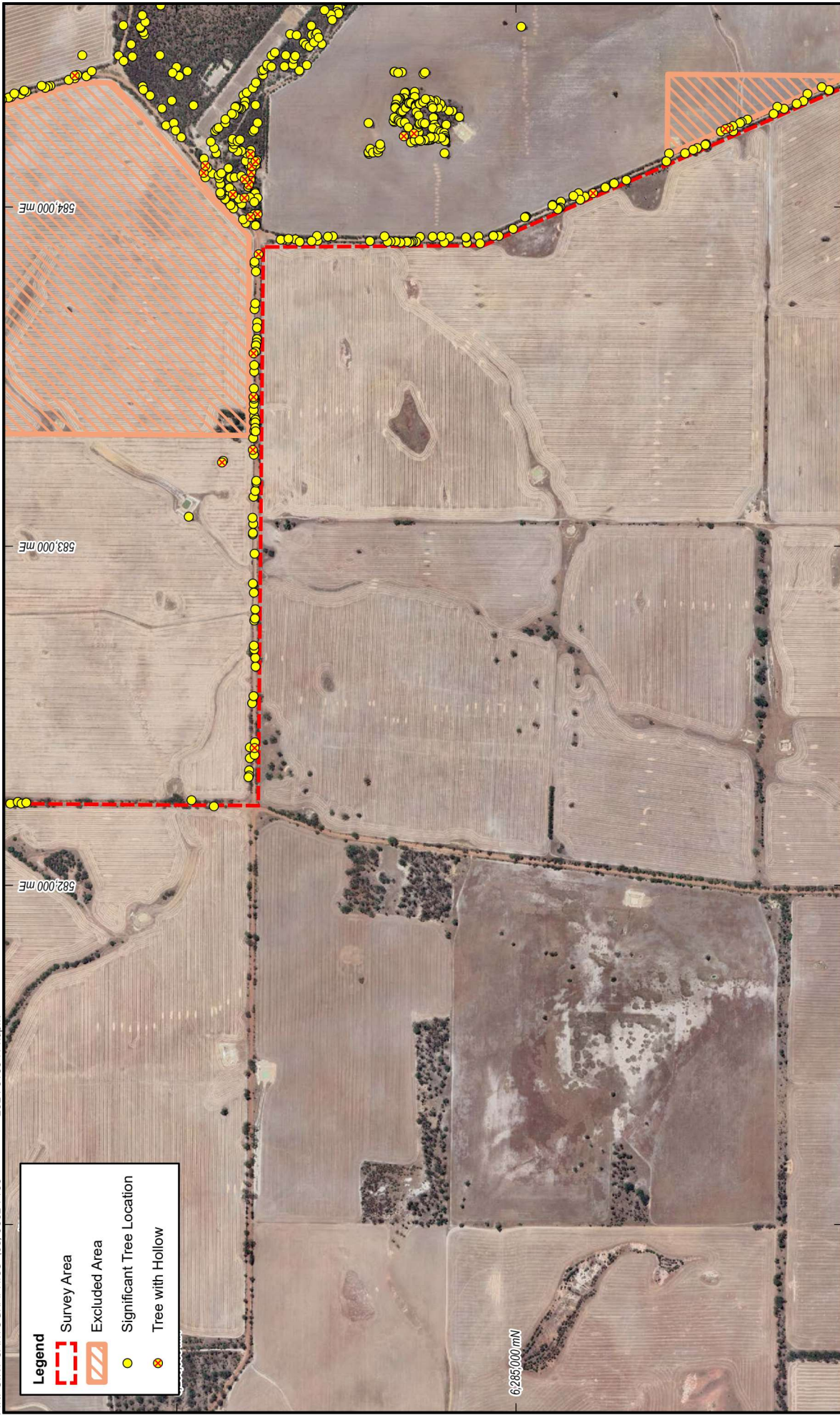
**Figure 13**

Job: 2024-0165

**SIGNIFICANT TREES**

**TERRESTRIAL ECOSYSTEMS**  
 Date: 3 Apr 2025  
 Drawn: G. Thompson

0 100 200 300 400 500m  
 SCALE 1 : 15,000 at A4  
 GDA2020 MGA zn50



**Legend**

- Survey Area
- Excluded Area
- Significant Tree Location
- Tree with Hollow

0 100 200 300 400 500m

SCALE 1 : 15,000 at A4  
GDA2020 MGA zn50

**TERRESTRIAL ECOSYSTEMS**

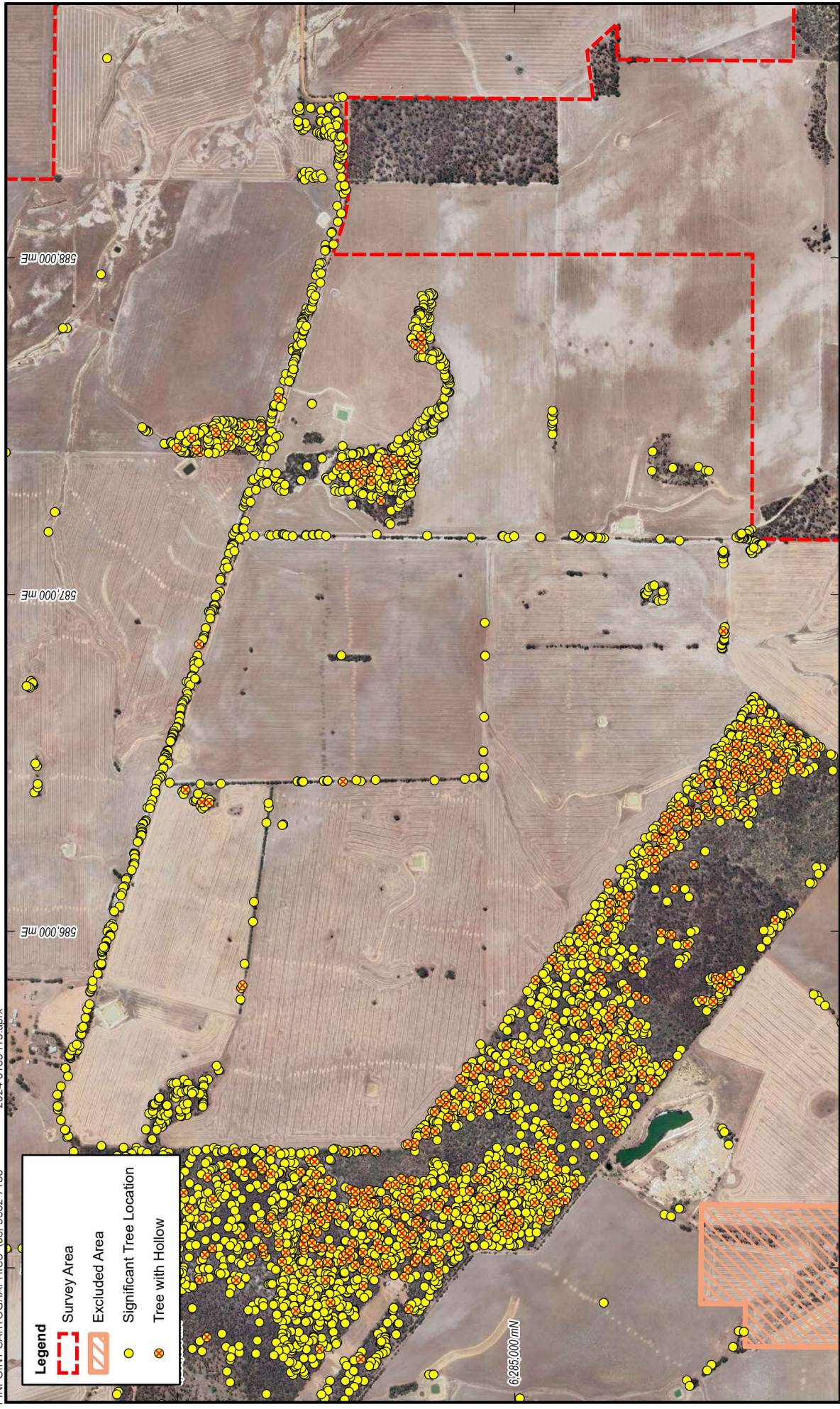
Drawn: G. Thompson  
Date: 3 Apr 2025

Ausgold Exploration Pty Ltd  
BASIC AND TARGETED VERTEBRATE FAUNA SURVEY AND  
RISK ASSESSMENT FOR THE KATANNING GOLD PROJECT





**SIGNIFICANT TREES**

**Figure 14**

PINPOINT CARTOGRAPHICS (08) 9562 7136 2024-0165-f15.aprx



**Legend**

-  Survey Area
-  Excluded Area
-  Significant Tree Location
-  Tree with Hollow

0 100 200 300 400 500m



SCALE 1 : 15,000 at A4  
GDA2020 MGA zn50




**TERRRESTRIAL ECOSYSTEMS**

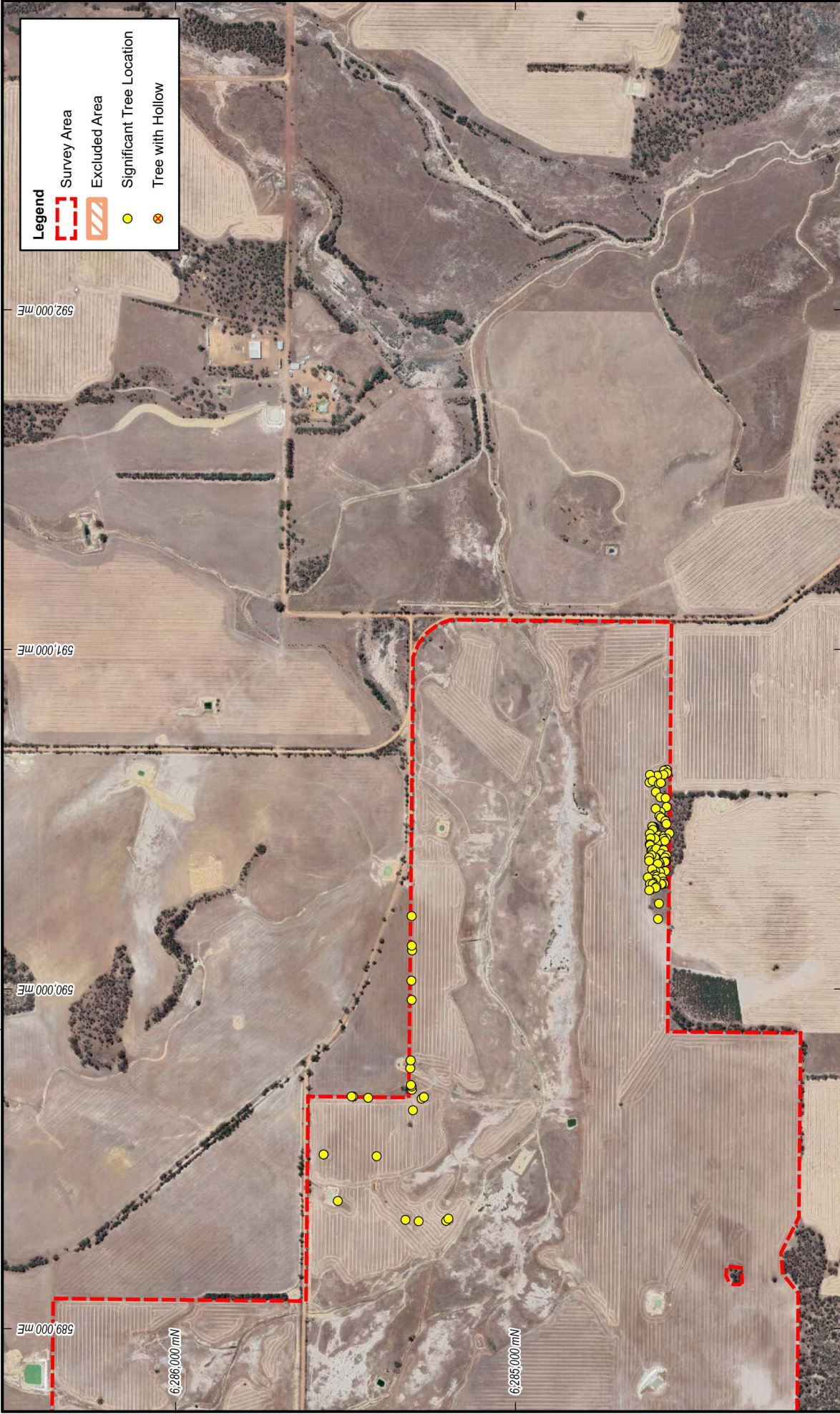
Drawn: G. Thompson Date: 3 Apr 2025

Ausgold Exploration Pty Ltd  
BASIC AND TARGETED VERTEBRATE FAUNA SURVEY AND  
RISK ASSESSMENT FOR THE KATANNING GOLD PROJECT

**SIGNIFICANT TREES**

**Figure 15**

Job: 2024-0165



Ausgold Exploration Pty Ltd  
BASIC AND TARGETED VERTEBRATE FAUNA SURVEY AND  
RISK ASSESSMENT FOR THE KATANNING GOLD PROJECT

Figure 16

Job: 2024-0165

**TERRRESTRIAL ECOSYSTEMS**



Drawn: G. Thompson

Date: 3 Apr 2025

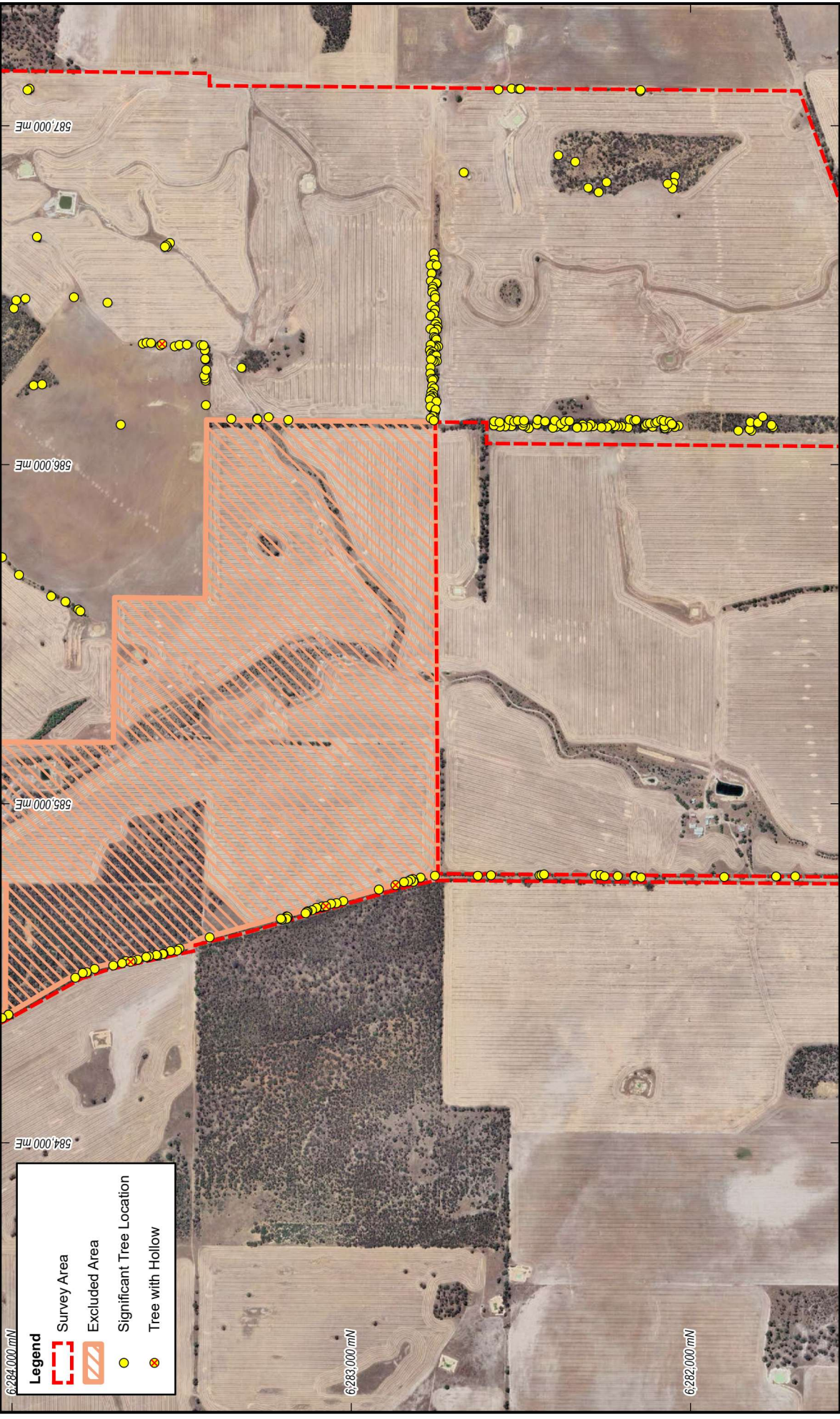
**SIGNIFICANT TREES**







SCALE 1 : 15,000 at A4  
GDA2020 MGA zn50



PINPOINT CARTOGRAPHICS (08) 9562 7136 2024-0165-f17.aprx



**Legend**

-  Survey Area
-  Excluded Area
-  Significant Tree Location
-  Tree with Hollow



SCALE 1 : 15,000 at A4  
GDA2020 MGA zn50



**TERRESTRIAL ECOSYSTEMS**

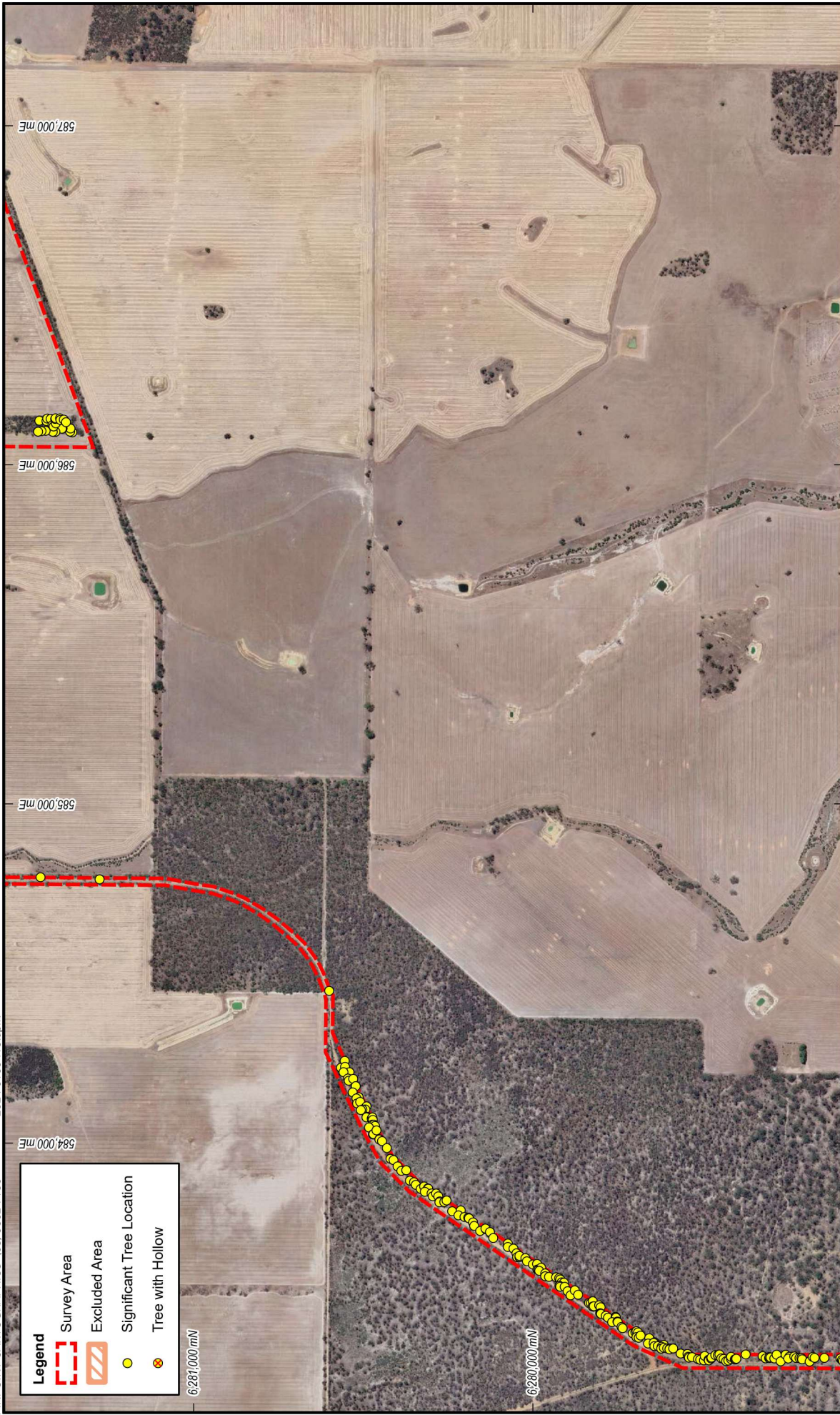
Drawn: G. Thompson Date: 3 Apr 2025

Ausgold Exploration Pty Ltd  
BASIC AND TARGETED VERTEBRATE FAUNA SURVEY AND  
RISK ASSESSMENT FOR THE KATANNING GOLD PROJECT

**SIGNIFICANT TREES**

**Figure 17**

Job: 2024-0165



**Legend**

- Survey Area
- Excluded Area
- Significant Tree Location
- Tree with Hollow

0 100 200 300 400 500m

SCALE 1 : 15,000 at A4  
GDA2020 MGA zn50

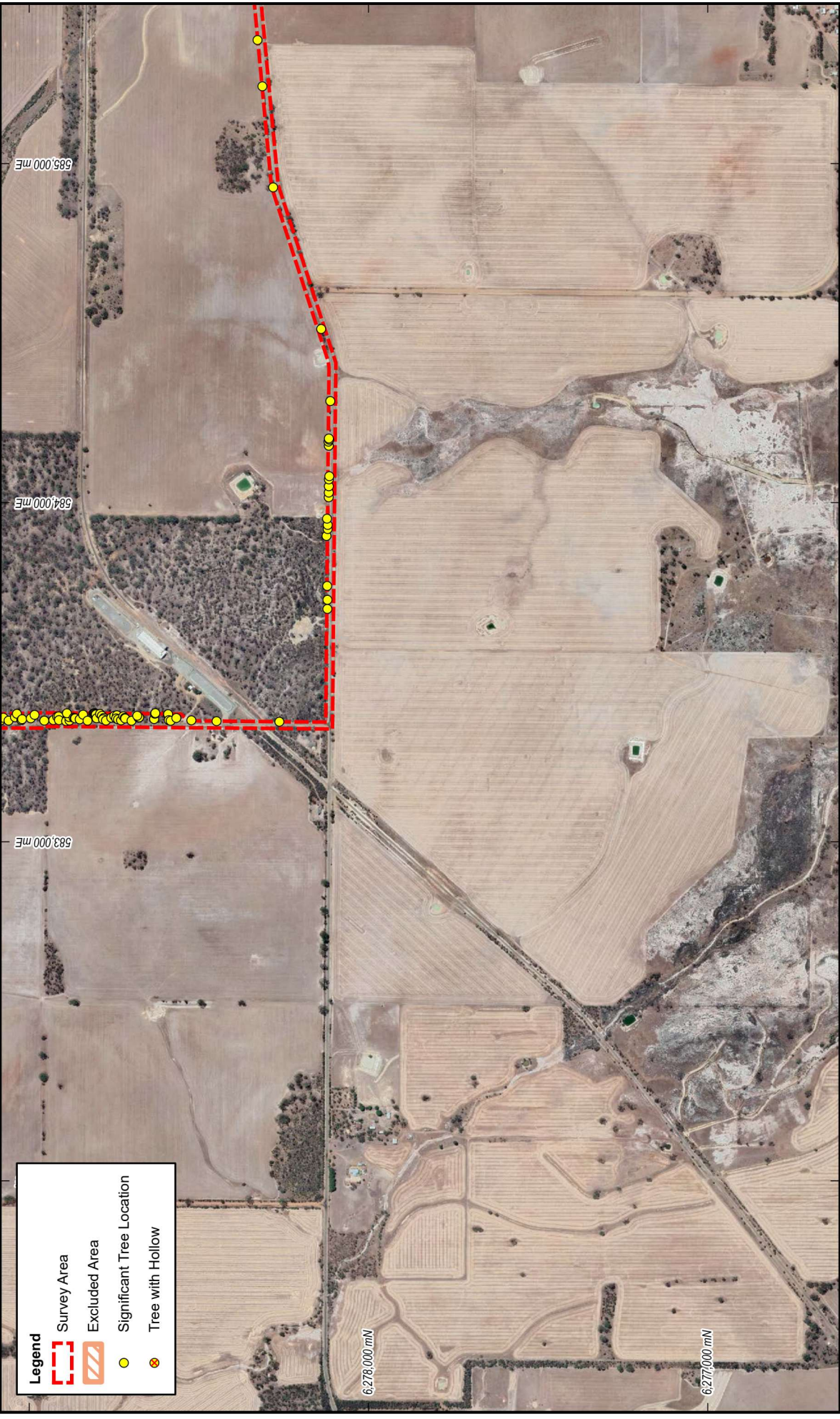
**TERRESTRIAL ECOSYSTEMS**

Drawn: G. Thompson Date: 3 Apr 2025

Ausgold Exploration Pty Ltd  
BASIC AND TARGETED VERTEBRATE FAUNA SURVEY AND  
RISK ASSESSMENT FOR THE KATANNING GOLD PROJECT

**SIGNIFICANT TREES**

**Figure 18**



**Legend**

- Survey Area
- Excluded Area
- Significant Tree Location
- Tree with Hollow

0 100 200 300 400 500m

SCALE 1 : 15,000 at A4  
GDA2020 MGA zn50

N

**TERRESTRIAL ECOSYSTEMS**

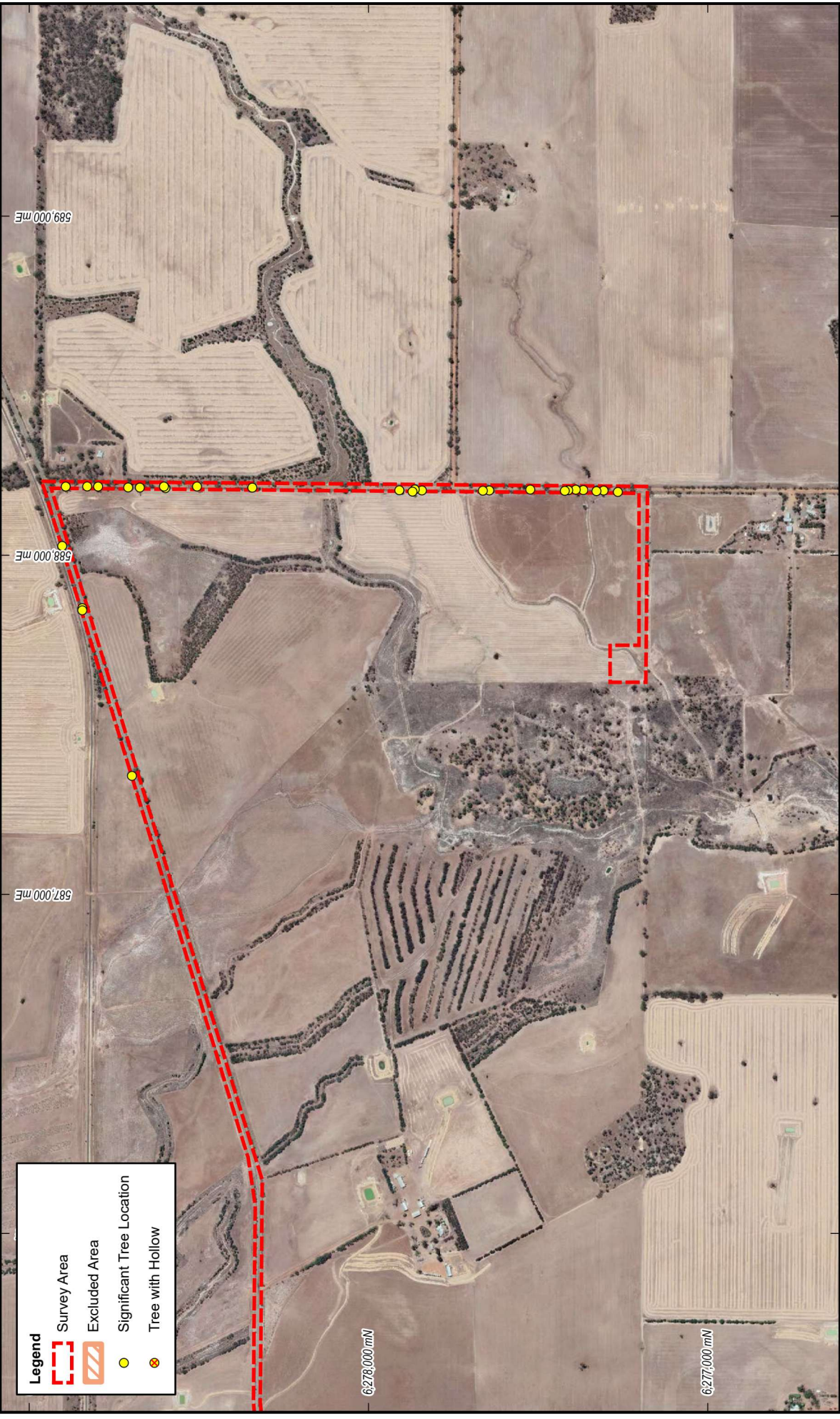
Drawn: G. Thompson  
Date: 3 Apr 2025

Ausgold Exploration Pty Ltd  
BASIC AND TARGETED VERTEBRATE FAUNA SURVEY AND  
RISK ASSESSMENT FOR THE KATANNING GOLD PROJECT

**SIGNIFICANT TREES**

**Figure 19**

Job: 2024-0165



**Legend**

- Survey Area
- Excluded Area
- Significant Tree Location
- Tree with Hollow

0 100 200 300 400 500m

SCALE 1 : 15,000 at A4  
GDA2020 MGA zn50

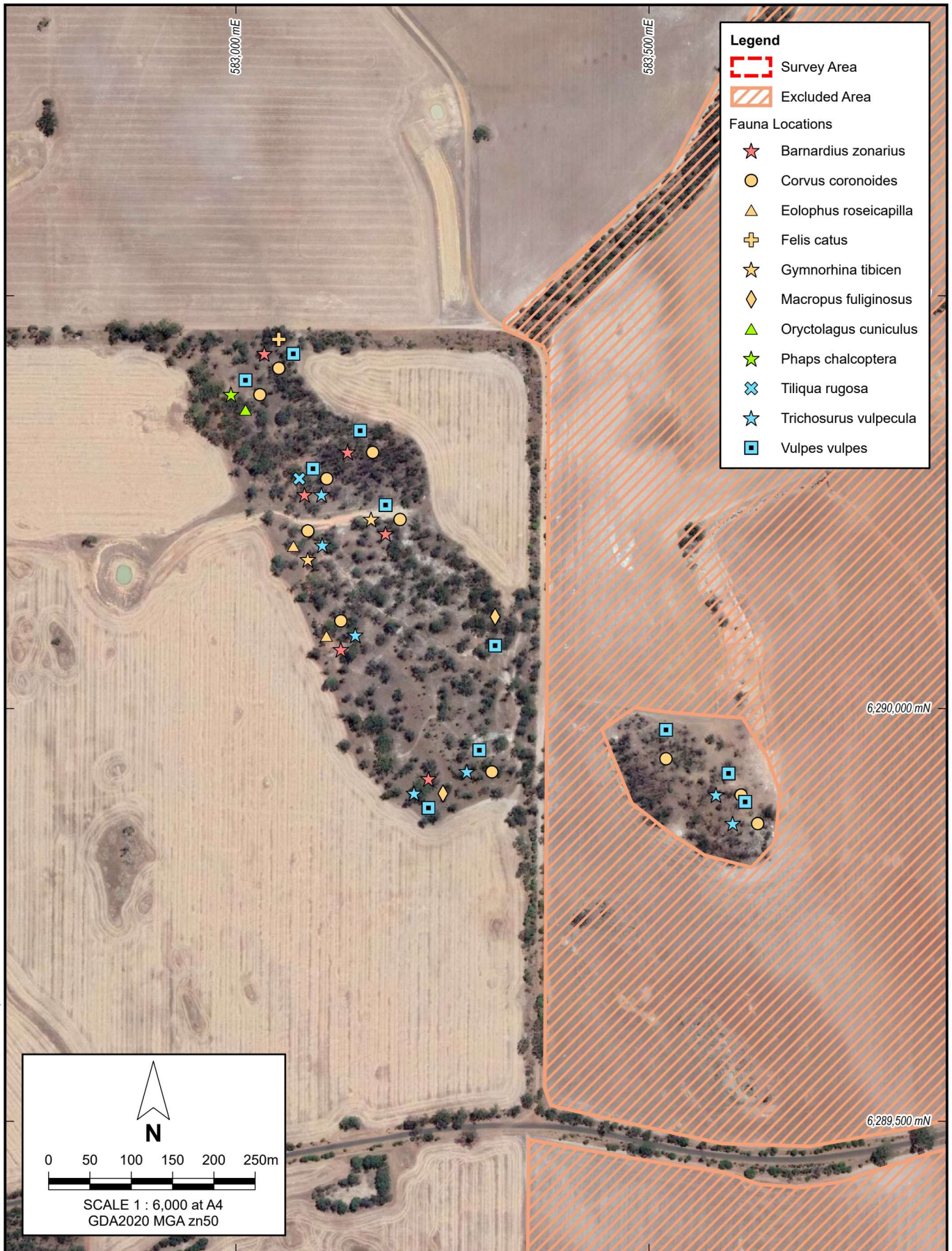
**TERRESTRIAL ECOSYSTEMS**

Drawn: G. Thompson  
Date: 3 Apr 2025

Ausgold Exploration Pty Ltd  
BASIC AND TARGETED VERTEBRATE FAUNA SURVEY AND  
RISK ASSESSMENT FOR THE KATANNING GOLD PROJECT

**SIGNIFICANT TREES**

**Figure 20**



PINPOINT CARTOGRAPHICS (08) 9562 7136 2024-0165-f21.aprx

**TERRESTRIAL ECOSYSTEMS**

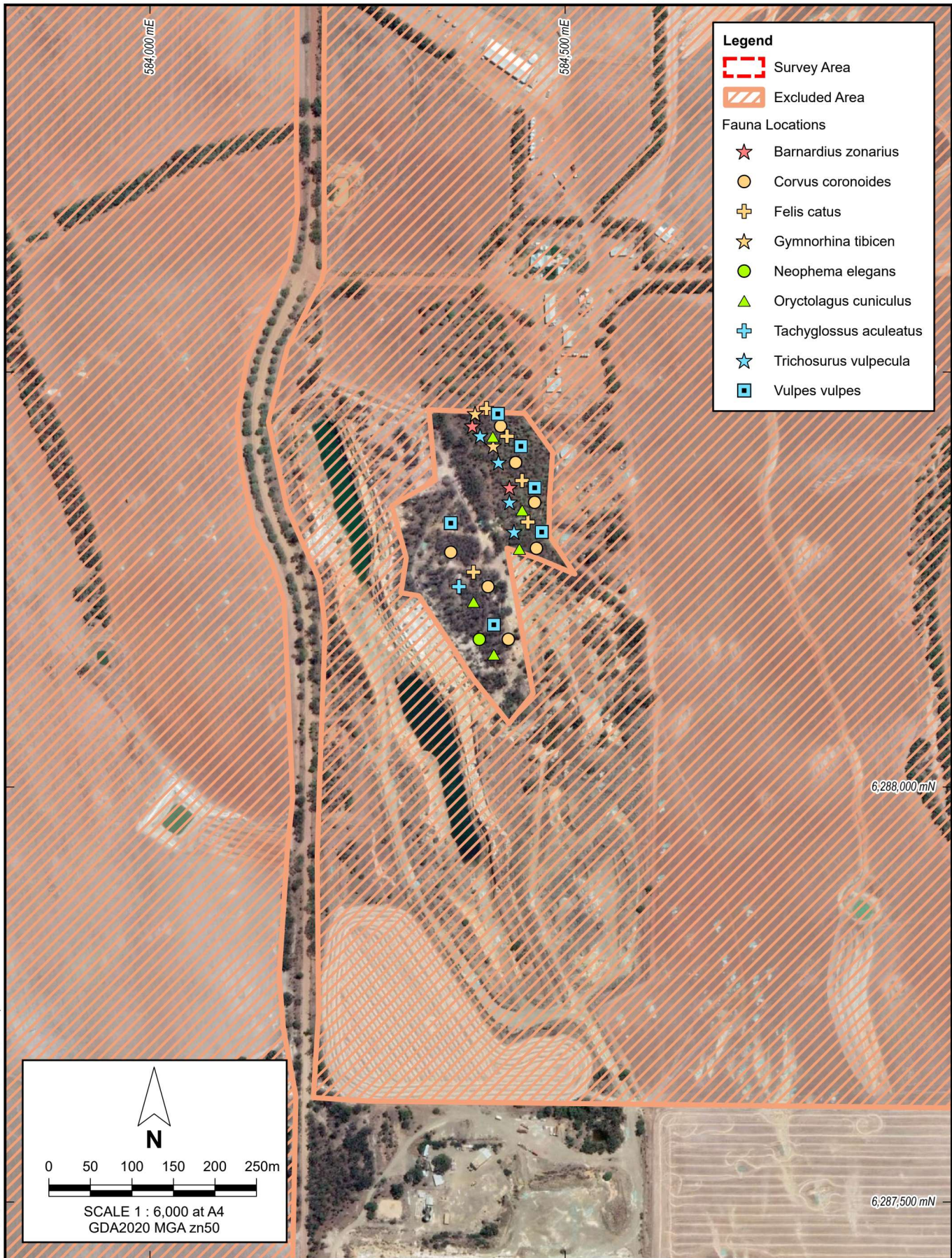
Drawn: G. Thompson      Date: 3 Apr 2025

Ausgold Exploration Pty Ltd  
 BASIC AND TARGETED VERTEBRATE FAUNA SURVEY AND  
 RISK ASSESSMENT FOR THE KATANNING GOLD PROJECT

**FAUNA LOCATIONS**

**Figure 21**

Job: 2024-0165



**Legend**

- Survey Area
- Excluded Area

**Fauna Locations**

- ★ Barnardius zonarius
- Corvus coronoides
- + Felis catus
- ★ Gymnorhina tibicen
- Neophema elegans
- ▲ Oryctolagus cuniculus
- + Tachyglossus aculeatus
- ★ Trichosurus vulpecula
- Vulpes vulpes

N

0 50 100 150 200 250m

SCALE 1 : 6,000 at A4  
GDA2020 MGA zn50

PINPOINT CARTOGRAPHICS (08) 9562 7136 2024-0165-f22.aprx

Ausgold Exploration Pty Ltd  
 BASIC AND TARGETED VERTEBRATE FAUNA SURVEY AND  
 RISK ASSESSMENT FOR THE KATANNING GOLD PROJECT

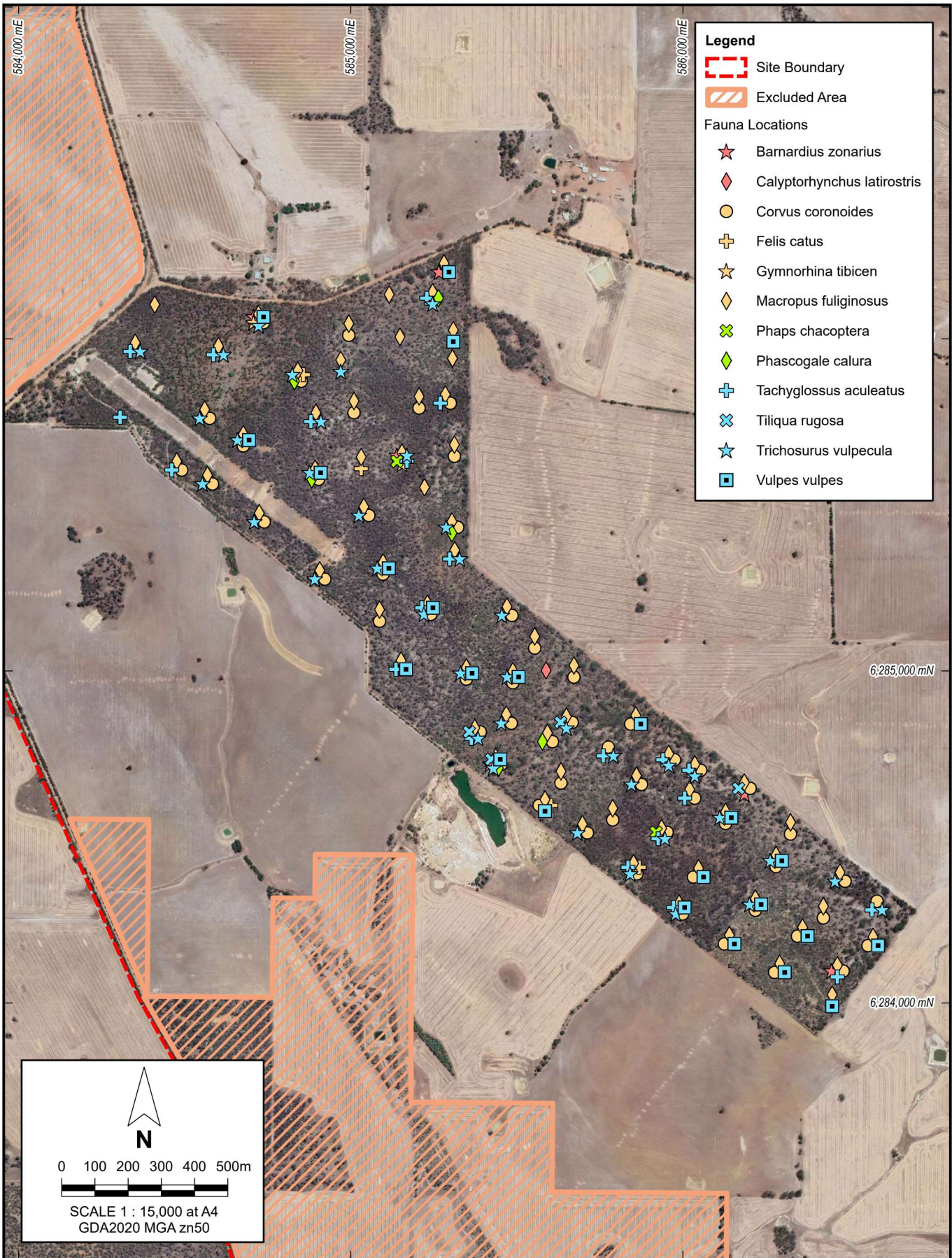
**Figure 22**



**FAUNA LOCATIONS**

Drawn: G. Thompson      Date: 3 Apr 2025

Job: 2024-0165



PINPOINT CARTOGRAPHICS (08) 9562 7136 2024-0165-23.aprx

**TERRESTRIAL ECOSYSTEMS**

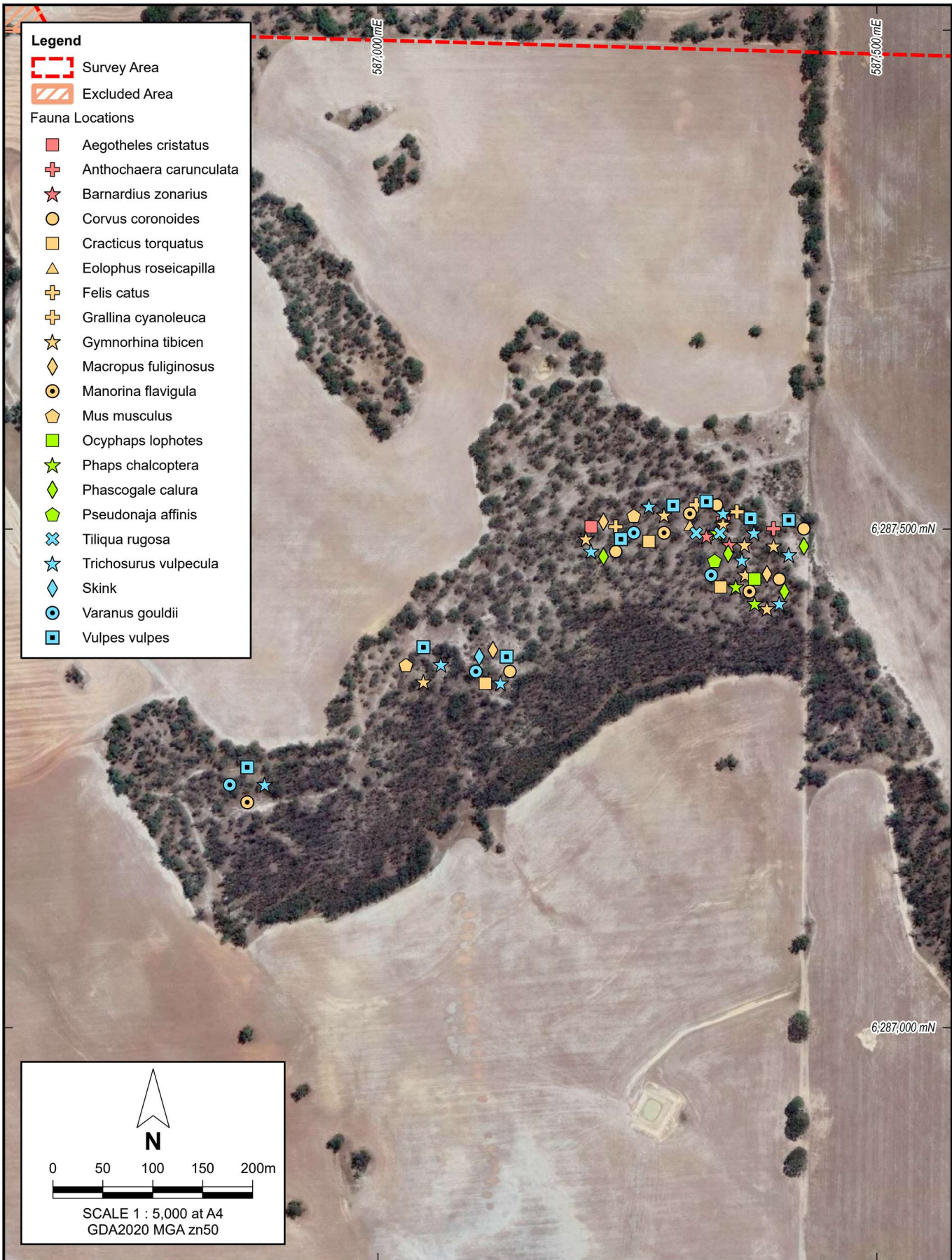
Drawn: G. Thompson Date: 3 Apr 2025

Ausgold Exploration Pty Ltd  
 BASIC AND TARGETED VERTEBRATE FAUNA SURVEY AND  
 RISK ASSESSMENT FOR THE KATANNING GOLD PROJECT

**FAUNA LOCATIONS**

**Figure 23**

Job: 2024-0165



PINPOINT CARTOGRAPHICS (08) 9562 7136 2024-0165-f24.aprx

**TERRESTRIAL ECOSYSTEMS**

Drawn: G. Thompson

Date: 3 Apr 2025


Ausgold Exploration Pty Ltd  
 BASIC AND TARGETED VERTEBRATE FAUNA SURVEY AND  
 RISK ASSESSMENT FOR THE KATANNING GOLD PROJECT

**FAUNA LOCATIONS**

**Figure 24**
























Job: 2024-0165

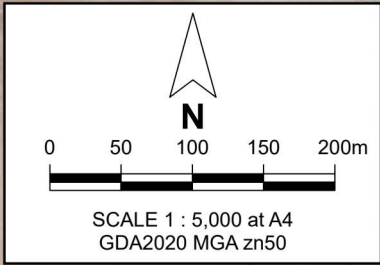
**Legend**

 Survey Area

 Excluded Area

**Fauna Locations**

-  Antechinus flavipes
-  Barnardius zonarius
-  Cercartetus concinnus
-  Coracina novaehollandiae
-  Corvus coronoides
-  Cracticus torquatus
-  Eolophus roseicapilla
-  Felis catus
-  Grallina cyanoleuca
-  Gymnorhina tibicen
-  Macropus fuliginosus
-  Manorina flavigula
-  Morelia imbricata
-  Mus musculus
-  Phaps chalcoptera
-  Pomatostomus superciliosus
-  Rattus rattus
-  Rhipidura leucophrys
-  Strepera versicolor
-  Tiliqua rugosa
-  Trichosurus vulpecula
-  Varanus gouldii
-  Vulpes vulpes



PINPOINT CARTOGRAPHICS (08) 9562 7136 2024-0165+25.aprx



**TERRESTRIAL ECOSYSTEMS**

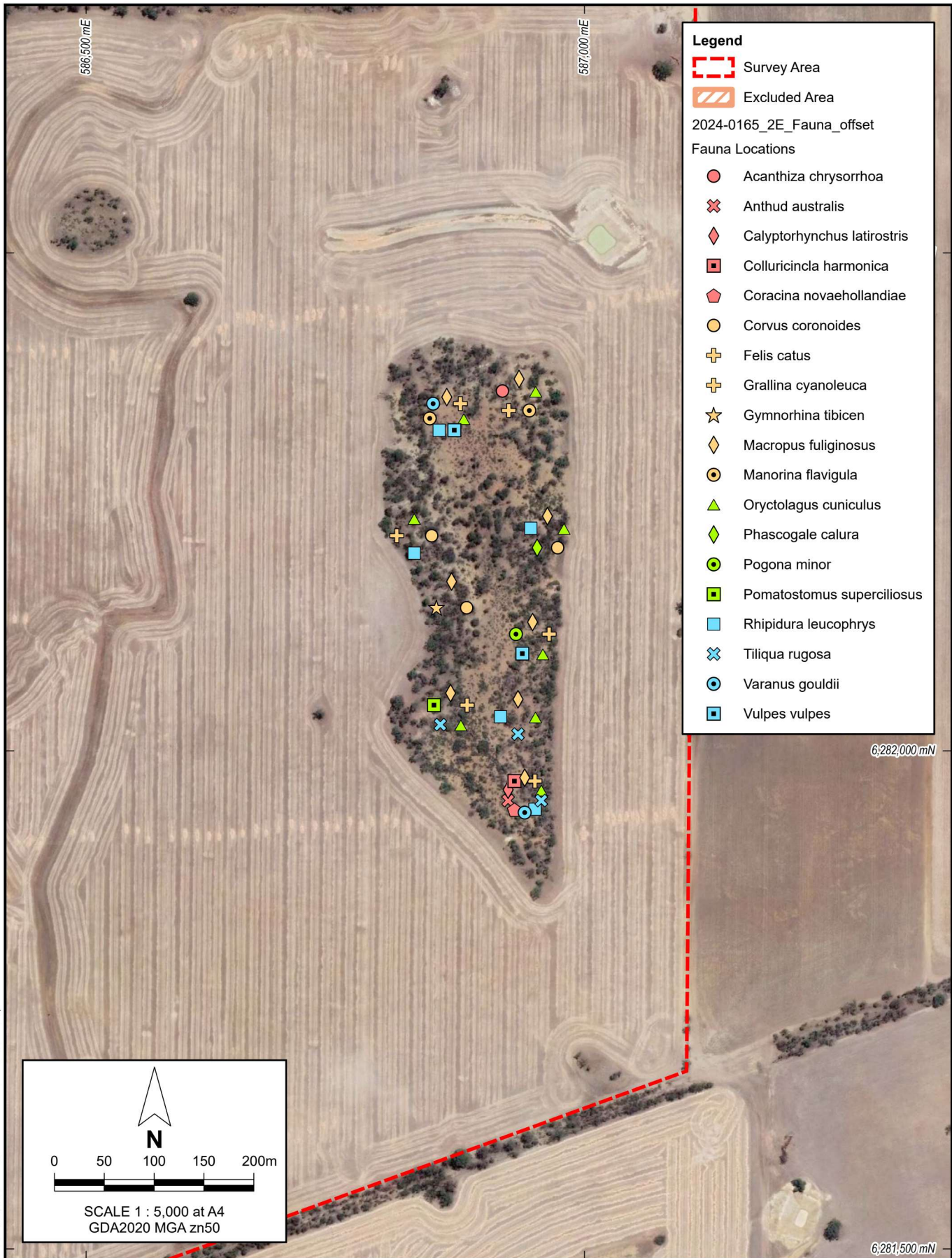
Drawn: G. Thompson      Date: 3 Apr 2025

Ausgold Exploration Pty Ltd  
 BASIC AND TARGETED VERTEBRATE FAUNA SURVEY AND  
 RISK ASSESSMENT FOR THE KATANNING GOLD PROJECT

**FAUNA LOCATIONS**

**Figure 25**

Job: 2024-0165



**Legend**

- Survey Area
- Excluded Area

2024-0165\_2E\_Fauna\_offset

**Fauna Locations**

- *Acanthiza chrysorrhoa*
- ✕ *Anthud australis*
- ◆ *Calyptorhynchus latirostris*
- *Colluricincla harmonica*
- ⬠ *Coracina novaehollandiae*
- *Corvus coronoides*
- + *Felis catus*
- + *Grallina cyanoleuca*
- ☆ *Gymnorhina tibicen*
- ◆ *Macropus fuliginosus*
- *Manorina flavigula*
- ▲ *Oryctolagus cuniculus*
- ◆ *Phascogale calura*
- *Pogona minor*
- *Pomatostomus superciliosus*
- *Rhipidura leucophrys*
- ✕ *Tiliqua rugosa*
- *Varanus gouldii*
- *Vulpes vulpes*

N

0    50    100    150    200m

SCALE 1 : 5,000 at A4  
GDA2020 MGA zn50

PINPOINT CARTOGRAPHICS (08) 9562 7136    2024-0165-26.aprx

**TERRESTRIAL ECOSYSTEMS**

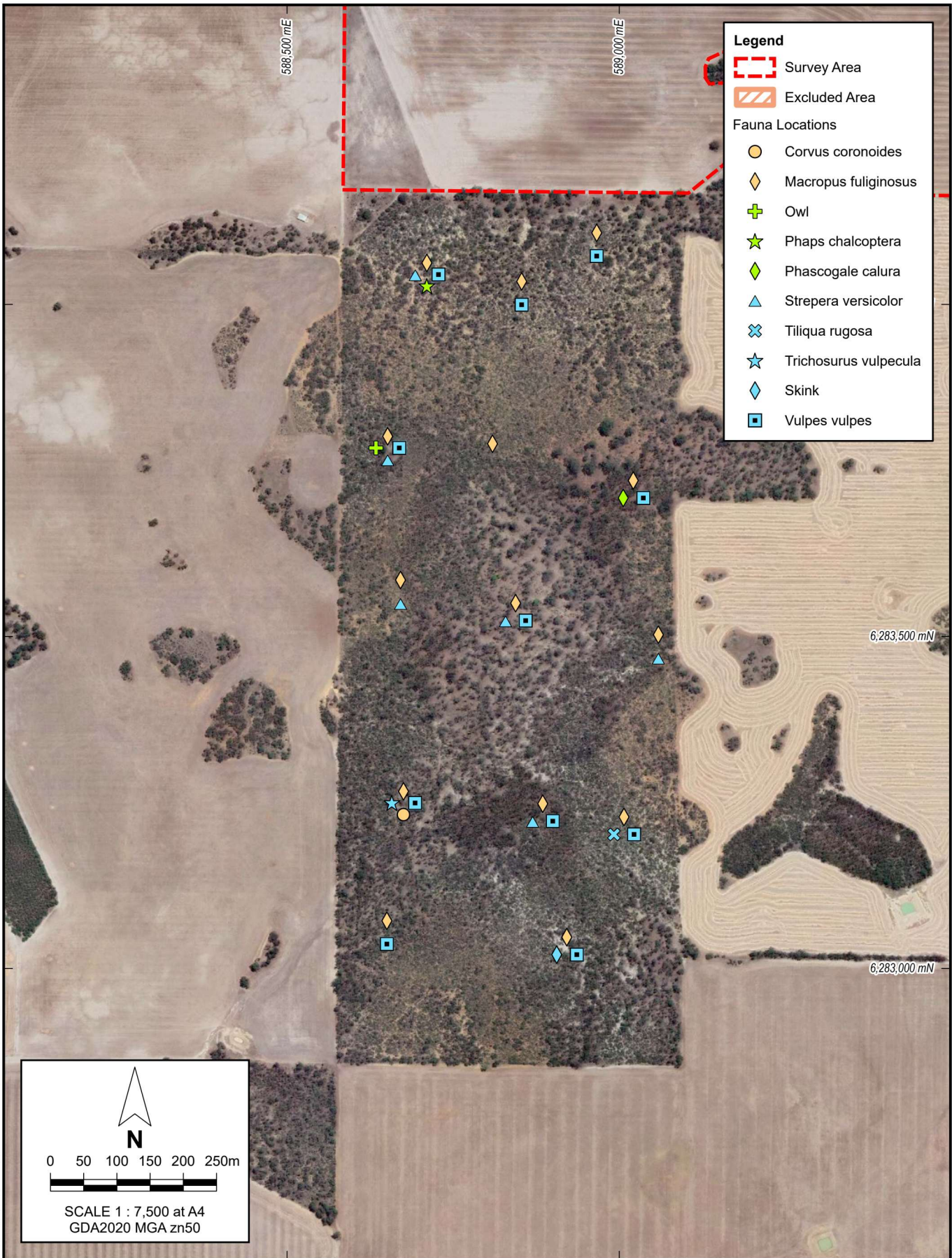
Drawn: G. Thompson    Date: 3 Apr 2025

Ausgold Exploration Pty Ltd  
 BASIC AND TARGETED VERTEBRATE FAUNA SURVEY AND  
 RISK ASSESSMENT FOR THE KATANNING GOLD PROJECT

**FAUNA LOCATIONS**

**Figure 26**

Job: 2024-0165



PINPOINT CARTOGRAPHICS (08) 9562 7136 2024-0165-427.aprx

**TERRESTRIAL ECOSYSTEMS**

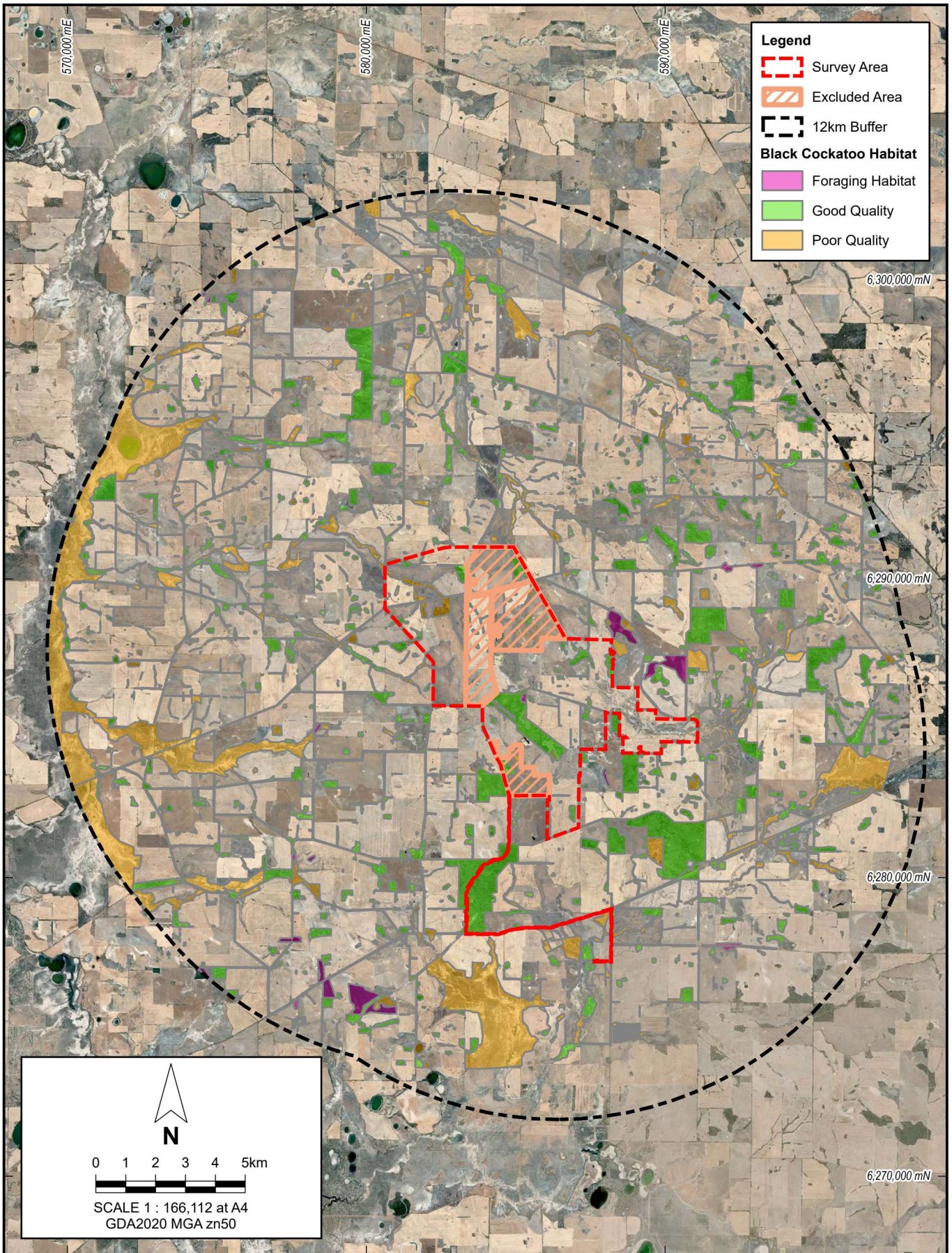
Drawn: G. Thompson      Date: 3 Apr 2025

Ausgold Exploration Pty Ltd  
 BASIC AND TARGETED VERTEBRATE FAUNA SURVEY AND  
 RISK ASSESSMENT FOR THE KATANNING GOLD PROJECT


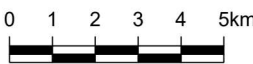
**FAUNA LOCATIONS**

**Figure 27**

Job: 2024-0165



PINPOINT CARTOGRAPHICS (08) 9562 7136 2024-0165-28.aprx

  
**N**  
  
 0 1 2 3 4 5km  
 SCALE 1 : 166,112 at A4  
 GDA2020 MGA zn50


**TERRESTRIAL ECOSYSTEMS**  
 Drawn: G. Thompson      Date: 3 Apr 2025

Ausgold Exploration Pty Ltd  
 BASIC AND TARGETED VERTEBRATE FAUNA SURVEY AND  
 RISK ASSESSMENT FOR THE KATANNING GOLD PROJECT  
**BLACK COCKATOO REGIONAL ASSESSMENT**

**Figure 28**  
 Job: 2024-0165