

Template

Proposal Content Document

Table 1: General proposal content description

| | |
|--------------------------|--|
| Proposal title | Marri Wind Farm |
| Proponent name | Marri WF Pty Ltd |
| Short description | This Proposal will have up to 82 turbines, each up to 275 metres (m) maximum height and capacity to generate up to 550 megawatts (MW) of renewable energy. This equates to approximately 10% of the current demand for electricity through the Southwest Interconnected System (SWIS). The Proposal will connect to the SWIS, Western Power's transmission network, supporting the Clean Energy Link North infrastructure upgrade works. Additionally, a 6,600-megawatt hour (MW/h) battery energy storage system (BESS) and all ancillary infrastructure may also be incorporated into the Proposal, pending the final financial investment decision. |

Table 2: Proposal content elements

| Proposal element | Location / description | Maximum extent, capacity or range |
|---|---|--|
| Physical elements | | |
| Proposed Development Envelope comprising the following features within in the Proposed Indicative Footprint of disturbance: | Section 1.4 Figure 1-1: Location Figure 1-3: Site Plan Table 1-5 | Proposed Development Envelope of approximately 12,473.12 ha Proposed Indicative Footprint of approximately 10,159 ha Proposed Construction Footprint of approximately 963.61ha <i>Refer to the figure enclosed in this PCD.</i> |
| Turbines Turbine foundations Turbine hardstands | | Up to 82 turbines with a maximum of 275 m height Up to 550 MW Wind Farm Approximately 137 ha |
| Wind farm substation Connector substation Transmission line to Connector substation | | Approximately 3 ha Approximately 3 ha Approximately 7.5 km 330 kV overhead transmission spur line up to 60 m in height to export energy to the existing 330 kV Western Power transmission network. |
| Battery energy storage system (BESS) | | 6,600 MWh battery energy storage capacity Approximately 50 ha |

| | | |
|---|---|---|
| Operational and maintenance area | | Approximately 2.2 ha |
| Permanent meteorological masts | | 6 meteorological masts up to 180 m in height over approximately 1 ha |
| Permanent communication tower | | 1 Communication tower up to 85 m in height; approximately 0.5 ha |
| External site access Internal access roads or tracks Clearing to necessitate site entry | | Up to 4 site access points Approximately 136 km of internal roads or tracks Clearing of no more than approximately 0.153 ha Threatened Ecological Community (TEC) for site access to connector substation and approximately 0.015 ha for other site access points |
| Supporting utilities (temporary Infrastructure) | | Approximately 501.5 ha including construction buffer for these supporting utilities |
| Construction elements | | |
| Temporary construction compound, laydown areas and hardstands, biosecurity laydown and site security areas. Borrow pits/quarries and stockpiles Temporary workers accommodation | Section 1.4.5 Figure 1-3: Site Plan Table 1-6 | Proposed Construction Footprint of approximately 963.61 ha Construction phase expected to take up to 3 years. Approximately 106 ha Up to 450 equivalent persons capacity over approximately 10 ha |
| Water supply and temporary turkey's nests | Section 1.4.5 | Approximately 750 ML/yr from existing groundwater bores, up to 10 turkey nests with capacity up to 15,000 m3 within the Proposed Development Envelope. |
| Concrete batching plants | Section 1.4.5 Figure 1-3: Site Plan Table 1-6 | Concrete for the foundations will be mixed at concrete batching plants which are proposed to be part of the laydown areas within the Proposed Development Envelope. Concrete batching material may be sourced offsite and utilise onsite borrow pit material with up to 6 locations. Approximately 30 ha |
| Transport of turbines and associated infrastructure for site access via existing road network. | Section 8 Figure 1-4 and Figure 1-5 Appendix F and Appendix G | Trimming of no more than a 3.1 ha of native vegetation within the Transport Development Envelope. |

| Operational elements | | |
|---|---|--|
| Wind energy production and battery energy storage. | Figure 1-2 | Proposed Operational Envelope of approximately 462.96 ha, of which approximately 187.3 ha relates to BESS and Turbine Hardstands |
| Transmission line and connection substation and wind farm substation. | Figure 1-2 and Figure 1-3: Site Plan | Approximately 70.9 ha |
| Operational maintenance building/s and all permanent roads, structures and fuel storage. | Figure 1-2 and Figure 1-3: Site Plan | Approximately 462.96 ha permanent infrastructure of which approximately 275.69 ha relates to these areas. |
| Proposal elements with greenhouse gas emissions | | |
| Construction elements: | | |
| Scope 1 | GHG Scope 1 emission estimate of approximately 12,500 t CO ₂ -e over a 3-year construction phase. | |
| Scope 2 | Immaterial Scope 2 emission estimated during the 3-year construction phase. | |
| Scope 3 | GHG Scope 3 emissions estimate of approximately 200,000 t CO ₂ -e over 3 years. Supply and delivery of essential capital investment componentry (upstream products), machinery and equipment during for the construction phase. These upstream products are dependent on Final Investment Decision (FID); therefore, the precautionary principle has been applied to minimise under estimation | |
| Operation elements: | | |
| Scope 1 | An estimate, incorporated for maintenance buildings and other electricity use over the expected 30-year operational life expectancy, for Scope 1 emissions of approximately 750 t CO ₂ -e (total combined estimate, incorporating SF6 and immaterial fuel consumption for maintenance vehicles). | |
| Scope 2 | An estimate, incorporated for maintenance buildings and other electricity use over the expected 30-year operational life expectancy, for Scope 2 emissions of approximately 45,000 t CO ₂ -e (total combined estimate). | |
| Scope 3 | An estimate, incorporated for the supply and replacement of capital parts over an expected 30-year operational life expectancy for Scope 3 emissions of 19,500 t CO ₂ -e (total combined estimate). | |
| Rehabilitation | | |
| <p>Following the end of the construction and commissioning phases, all identified temporary construction areas will be returned to pre-construction land use activities where practical. If due to the proximity of capital infrastructure any area unable to be returned to agricultural production, will be incorporated into the operational footprint and rehabilitated following decommissioning.</p> <p>Following eventual decommissioning, all previously operational areas and any amendments which may occur during the operational life of the Proposal, are to be rehabilitated to support the continuance of the previous land use.</p> | | |
| Commissioning | | |
| There are no environmental impacts specific to the commissioning phase. | | |
| Decommissioning | | |

At the end of the initial land lease term (approximately 2059), the Proponent will perform a feasibility study to decide whether to continue use and/or upgrades of the capital infrastructure and technologies or to decommission and rehabilitate.

Decommissioning would incorporate the following:

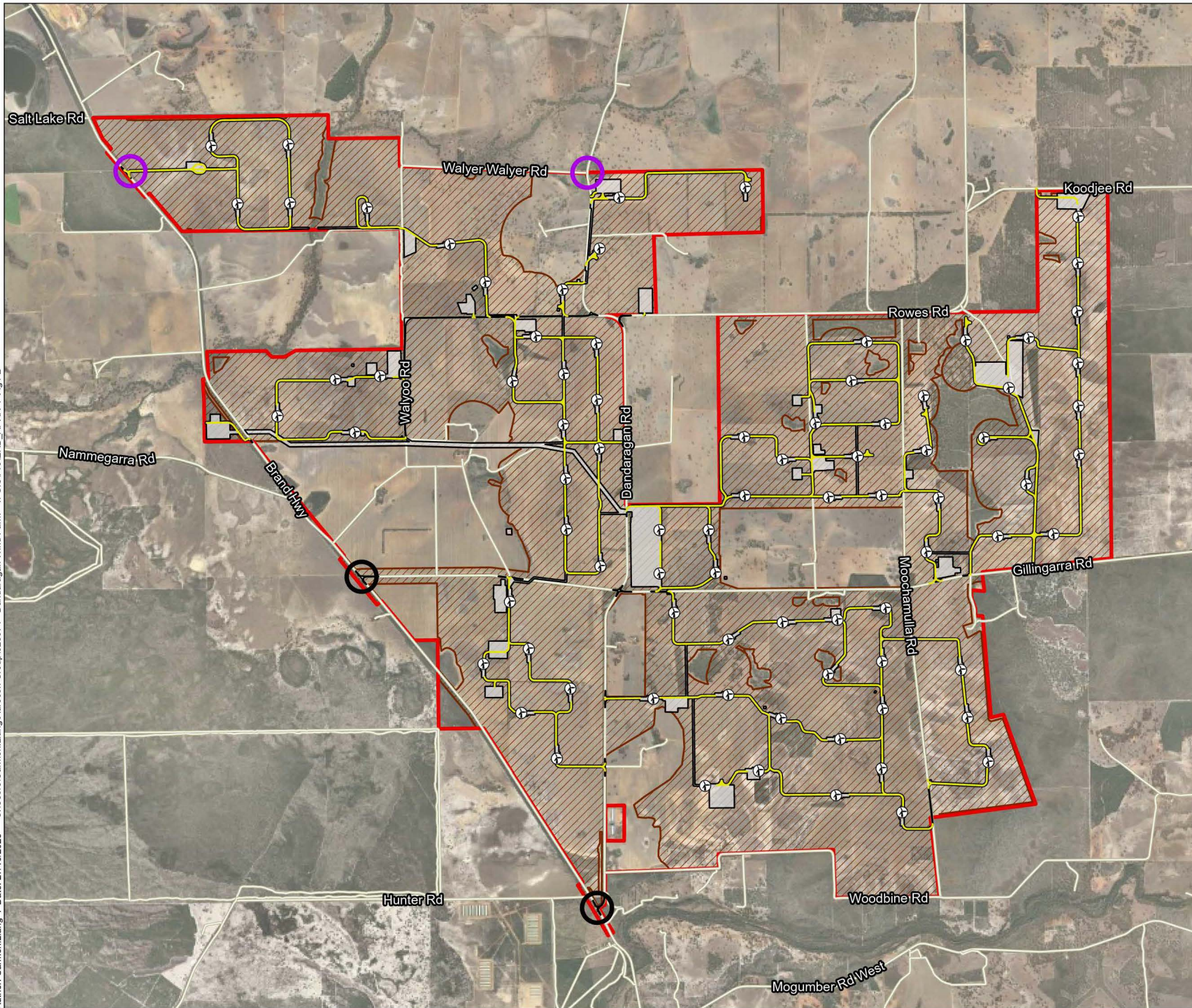
- Systematic de-energisation of all infrastructure, plant and equipment
- Dismantling, repurposing, recycling or complete removal for disposal of all infrastructure, plant and equipment or componentry
- Rehabilitation activities implemented across the decommissioned operation footprint and any additional disturbance during decommissioning
- Recycling of recyclable materials (including batteries, precious and base metals, glass etc.)

During the decommissioning phase some constructed elements may be subject to the landowner's discretion and remain post rehabilitation assessment (such as upgraded or sealed roads and tracks). All decommissioning activities will be developed in consultation with relevant stakeholders, for Post-Development Land Use.

Other elements which affect extent of effects on the environment

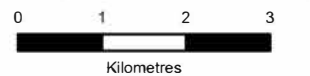
| | | |
|----------------|-----------------------|---|
| Proposal time* | Maximum project life | The proposed technology is expected to have an economic life of up to 35 years |
| | Construction phase | Up to 3 years |
| | Operations phase | 35 years |
| | Decommissioning phase | Approximately 1 year To be determined no later than 2 years prior to final power production. |

* Proponents should only provide realistic timeframes to avoid unnecessary change to proposal applications at referral (section 38C), assessment (section 43A) or post assessment (section 45C).



- Proposed Development Envelope
- Proposed Indicative Envelope
- Proposed Construction Footprint
- Turbine Layout
- Public Local Roads
- Access Tracks
- Main Access Points
- Alternative Access

Source: ESRI (2023), Alinta, data.wa.gov.au, SLIP / Landgate, Western Power



Author: Carmen Liang | Date: 27/10/2025 | C:\Users\Carmen.Liang\Aurecon Group\525974 - Dandaragan Wind Farm - 4. GIS\ProJRD_APRX | Fig1-2