

Onslow Recreational Jetty

Proposal Content Document

Table 1: General proposal content description

Proposal title	Onslow Recreational Jetty
Proponent name	Shire of Ashburton
Short description	The proposal is for the construction and operation of a recreational jetty at Beadon Point, Onslow, Western Australia. The Proposal will provide a pedestrian jetty alongside the ruins of the historic Onslow Jetty for tourism and fishing. The jetty will not be designed to accommodate vehicles or vessels and will be for pedestrians only. Some land clearing will be required to allow an access track and a boardwalk access path to the jetty.

Table 2: Proposal content elements

Proposal element	Location / Description	Maximum extent, capacity or range
Physical elements		
Jetty	A 'T' shaped jetty extending 210 m from the vegetation line (252 m in total). The jetty will have split decks, with the main deck +8m Australian Height Datum (AHD) and the lower deck +2m AHD but subject to change in detailed design based on detailed site specific metocean studies See Figure 3	Development envelope of 1.95 ha.
Land clearing	Clearing of an access management and turning pad and pedestrian access path that will be developed off the existing track and clearing for installation of a pedestrian boardwalk linking to an existing	Clearing of 1.4 ha.

	boardwalk structure. See Figures 1, 2 and 3	
Construction elements		
Jetty infrastructure installation via vessels or terrestrial based equipment	Within development envelope, Figure 1	Within development envelope of 1.95 ha.
Impact hammer piling	Figure 3	A total of 110 (final number of piles subject to detailed design) proposed steel tube piles to support the jetty.
Operational elements		
Operational	Recreational pedestrian access path and jetty. There will be no vessel or vehicle access to the jetty (unless in an emergency or maintenance is required) See Figure 1	Within development envelope of 1.95 ha.
Proposal elements with greenhouse gas emissions		
Construction elements:		
Scope 1	Greenhouse gas emissions will be significantly lower than the emissions levels which trigger EPA consideration	
Scope 2		
Scope 3		
Operation elements:		
Scope 1	Greenhouse gas emissions will be significantly lower than the emissions levels which trigger EPA consideration	
Scope 2		
Scope 3		
Rehabilitation		
<p>No rehabilitation is likely to be required, as land and seabed clearing is only for the Proposal footprint. Some temporary disturbance is likely within the development envelope however this disturbance will be managed under the construction management plans and will not require rehabilitation.</p> <p>If rehabilitation is possible within areas of disturbance, this will be undertaken in accordance with contractor management plans will not affect the disturbance footprints.</p>		

Commissioning		
Jetty will be managed and maintained in accordance with a Jetty licence under the <i>Jetties Act 1926</i> and the <i>Jetty Regulations 1940</i> .		
Decommissioning		
Not applicable		
Other elements which affect the extent of effects on the environment		
Proposal time*	Maximum project life	Estimated to be 50 years, prior to potential need for significant refurbishment/maintenance or redesign due to factors such as sea level rise and durability constraints.
	Construction phase	The construction of the Jetty is anticipated to take less than 6 months, and will be undertaken during times of the year to avoid ecological windows. In particular, marine piling will not be undertaken between August and February to avoid humpback whale southern migration and peak turtle nesting, and construction activities that require works or disturbance on the beach will not be undertaken between October and February to avoid peak turtle nesting.
	Operations phase	The Onslow Recreational Jetty will be constructed with a design life of 50 years however, the jetty is intended for ongoing permanent operations.
	Decommissioning phase	Not Applicable

* Proponents should only provide realistic timeframes to avoid unnecessary changes to proposal applications at referral (section 38C), assessment (section 43A) or post-assessment (section 45C).

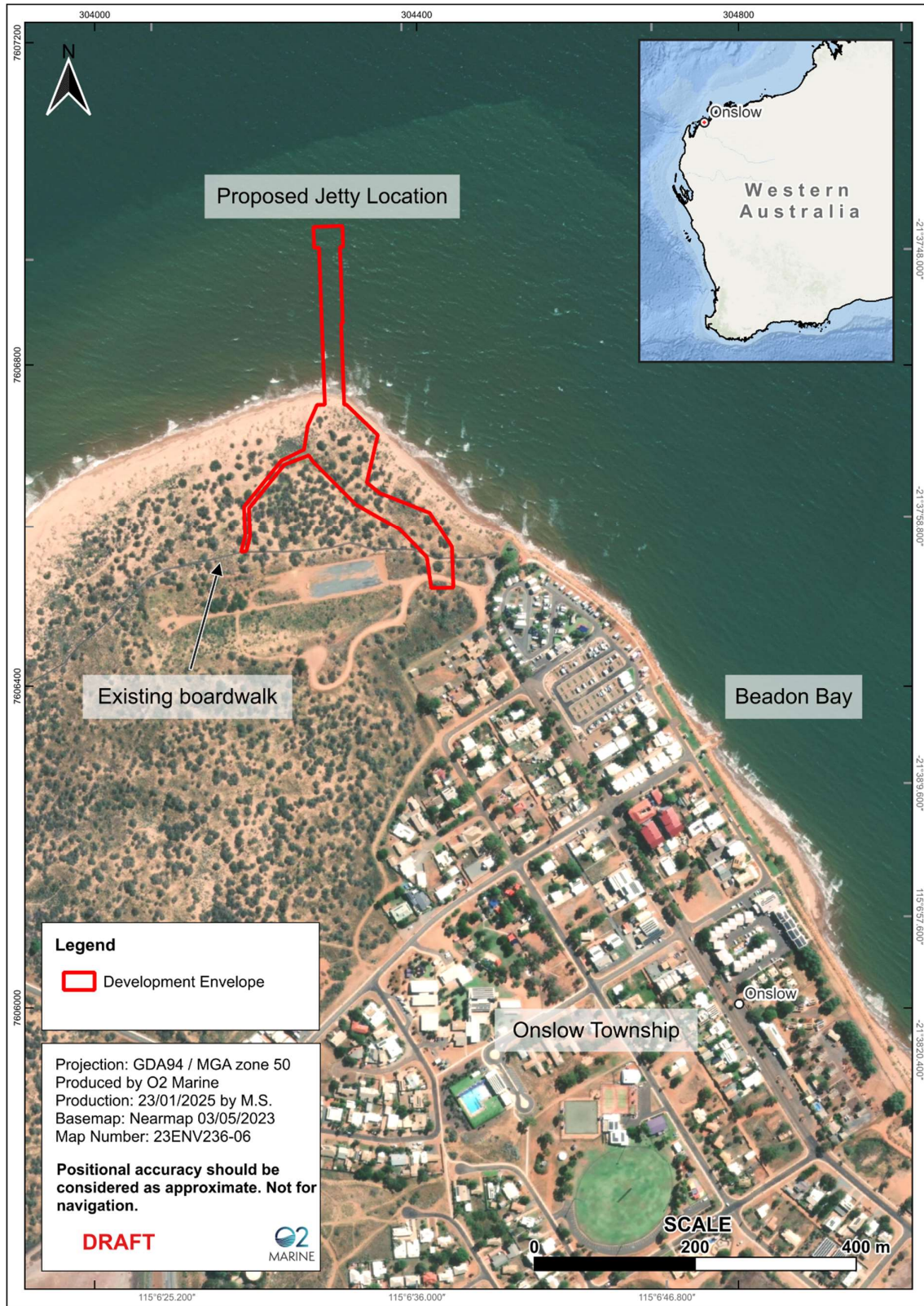


Figure 1: Project location

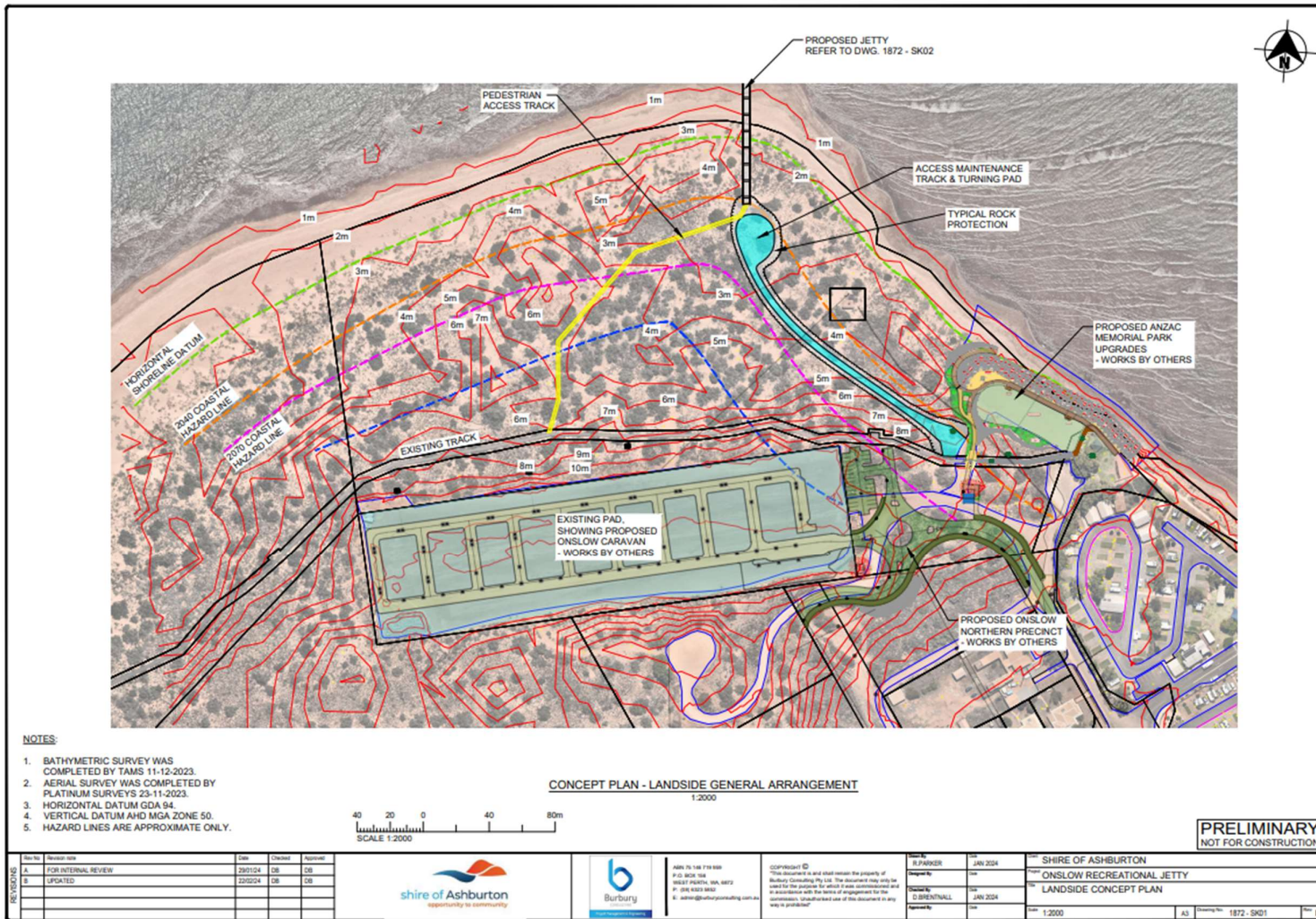


Figure 2: Concept design plan (Burbury Consulting 2024)

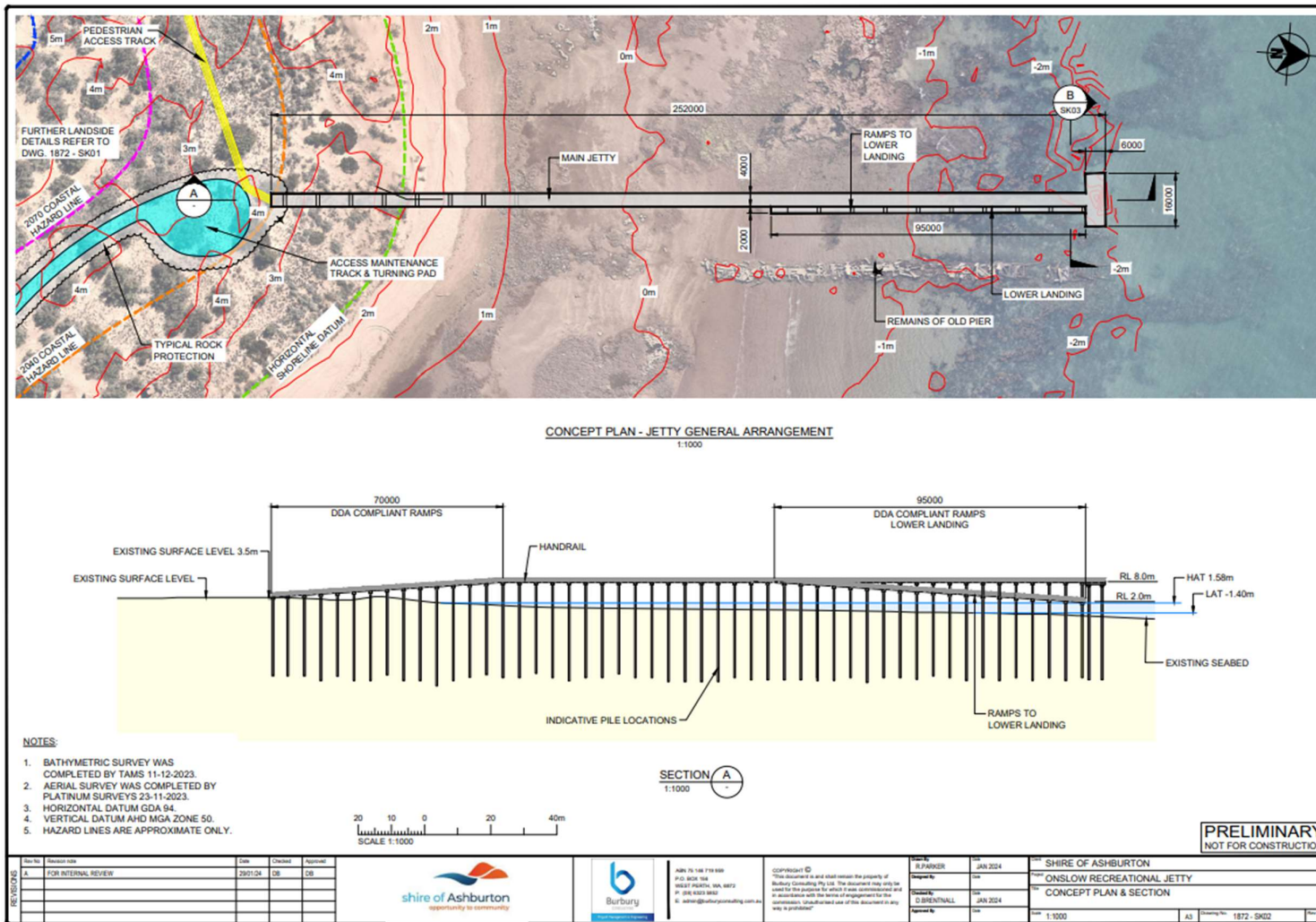


Figure 3: Jetty concept design (Burbury Consulting 2024)