

A photograph of a wind farm in a green field under a blue sky with scattered white clouds. The foreground is dominated by a dark blue, semi-transparent shape that contains the text. In the background, several white wind turbines are visible, with the largest one in the center-right and two smaller ones further away to the right.

synergyRED

Wind Farm in Scott River

Preliminary Decommissioning Plan

September 2025

synergyRED

Document title
Proposed Wind Farm in Scott River Preliminary Decommissioning Plan

Version	Author		Reviewer		Approver		
	Name	Signature	Name	Signature	Name	Signature	Date
A	[Redacted]	[Redacted]	[Redacted]	[Redacted]	[Redacted]	[Redacted]	24/09/25

Cover image - Warradarge Wind Farm is a Bright Energy Investment (BEI) asset which is a joint venture between Synergy, CBUS and DIF.

© Synergy Renewable Energy Developments Pty Ltd, trading as SynergyRED | ABN 65 152 752 719
 Forrest Centre 219 St Georges Terrace, Perth WA 6000
 GPO Box F366 Perth WA 6841
synergy.net.au/Our-energy/SynergyRED

SynergyRED acknowledges the Traditional Owners of the Land on which we operate and their continuing connection to the land, water and community. We pay our respects to all Aboriginal and Torres Strait Islander communities, their cultures and to Elders past, present and emerging.

Contents

1	Introduction.....	6
1.1	Purpose of Decommissioning Plan	7
1.2	Relevant standards and legislation	7
1.3	Scope of DP	7
1.4	Validity and review of DP	8
1.5	Site description	8
2	Proponent commitments	10
2.1	Funding.....	10
2.2	Decommissioning of the site	10
3	Decommissioning Process	10
3.1	Dismantling and Removal of Wind Turbines for refurbishment.....	10
3.2	Removal of foundations, roads, and hardstands.....	10
3.3	Removal of electrical infrastructure	11
3.4	Removal of buildings	11
3.5	Removal of monitoring equipment.....	11
3.6	Progressive rehabilitation	11
3.7	Completion criteria.....	11
3.8	Monitoring.....	12
3.9	Adaptive management and contingencies	12
4	Environmental Management	13
4.1	Waste management and end of operational life planning	13
4.2	Soil and Water Management.....	14
4.3	Remediation	14
5	Stakeholder Engagement	14
5.1	Record of stakeholder engagement	14
5.2	Landowner consultation	14
5.3	Stakeholder consultation	15
5.4	Communication Plan	15
6	Decommissioning Schedule	15
6.1	Risk assessment.	15

Figures

Figure 1 Maximum turbine dimensions/specifications. 6

Figure 2 Indicative layout - Proposed wind farm in Scott River 9

Figure 3 Wind-turbine-recycling-report-2023.pdf (cleanenergycouncil.org.au) 13

Figure 4 Wind-turbine-recycling-report-2023.pdf (cleanenergycouncil.org.au) 14

Acronyms

DWER	Department of Water and Environmental Regulation
EPA	Environmental Protection Authority
SynergyRED	Synergy Renewable Energy Developments Pty Ltd
WA	Western Australia

1 Introduction

SynergyRED, the Proponent, is seeking to construct and operate an onshore wind farm of up to 100MW in Scott River approximately 15 km north-east of the Augusta townsite in the south-west region of Western Australia. The Proposal consists of up to 20 wind turbines and associated infrastructure and will connect into the South-West Interconnected System (SWIS) via the existing 132kV transmission line between Beenup and Manjimup. The Proposal is located on predominantly cleared freehold land used for farming and adjacent road reserves.

SynergyRED is seeking development approval for the Proposed wind farm in Scott River. The project is currently in pre-feasibility. The final location and type of turbines has not been confirmed to allow flexibility in confirming the final location and design of the turbines and infrastructure during the detailed design process. Figure 1 below shows the maximum turbine dimension proposed for the wind farm.

This Preliminary Decommissioning Plan (DP) has been developed to outline the management of the wind farm and associated infrastructure at the end of project life.

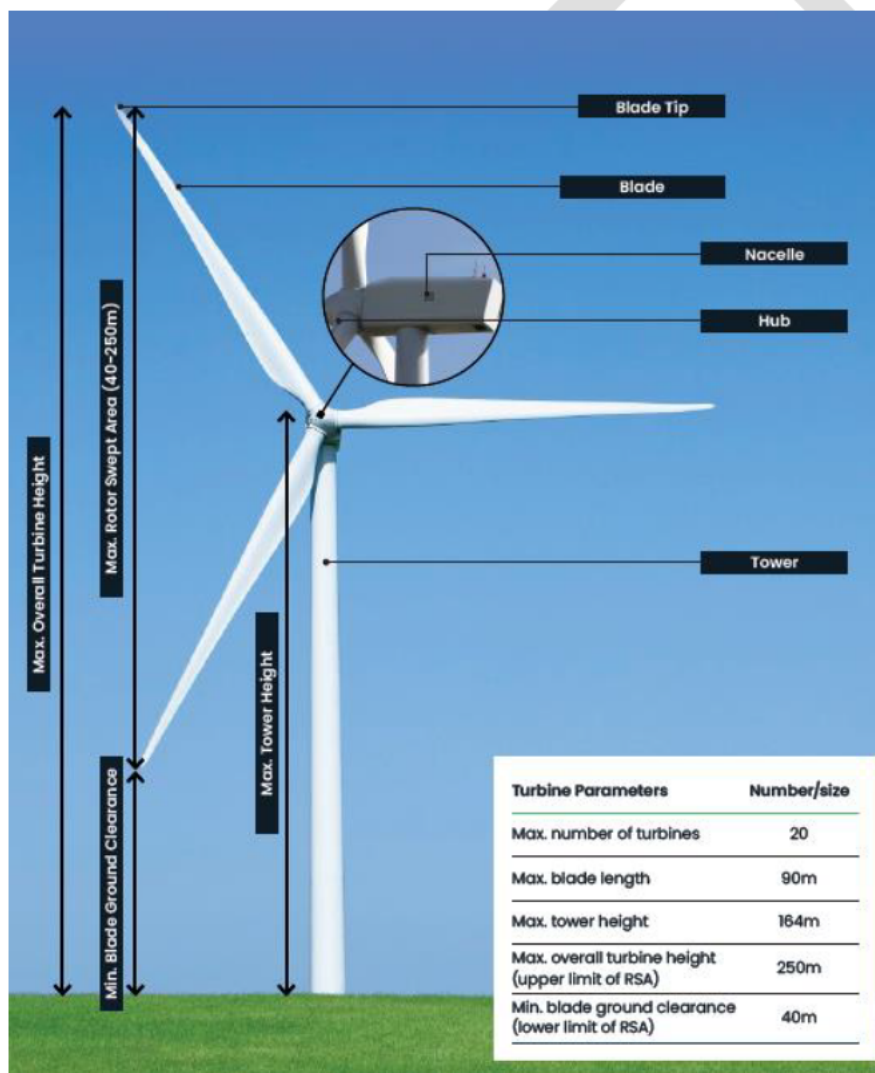


Figure 1 Maximum turbine dimensions/specifications.

1.1 Purpose of Decommissioning Plan

The purpose of this DP is to provide a preliminary strategy for managing the decommissioning phase of the Project. This includes:

- Assessing the existing environment and site conditions.
- Outlining decommissioning methodologies for turbines and associated infrastructure.
- Outlining responsibilities in the decommissioning.
- Managing environmental impacts.
- Identifying predicted waste streams and implementing appropriate management measures.
- Establishing rehabilitation objectives related to landform, soil quality, and biodiversity; and
- Providing a conceptual timeline for the decommissioning of site infrastructure and the completion of the rehabilitation program.

This DP assumes that the Project will be decommissioned at the end of its anticipated 30-year operational timeframe. If repowering the wind farm is not viable, the Project will be decommissioned in accordance with future revisions of this plan.

The DP demonstrates a commitment to ensuring appropriate environmental management during the decommissioning phase, in line with legislative requirements, conditions of consent and stakeholder interests.

1.2 Relevant standards and legislation

The relevant standards and legislation related to this DP are listed below:

- Environmental Protection Act 1994.
- Environmental Protection Regulation 2019.
- Waste Reduction and Recycling Act 2011.
- Waste Reduction and Recycling Regulation 2011.
- Contaminated Sites Act 2003 (WA).
- Contaminated Sites Regulations 2006 (WA).
- A Guide to Preparing Revegetation Plans for Clearing Permits (DWER, 2018)
- Guidance Statement No. 6 - Rehabilitation of Terrestrial Ecosystems (EPA, 2006)
- Phytophthora Dieback Management Manual (DBCA, 2020)

1.3 Scope of DP

The scope of the DP is limited to assets comprising or supporting the Proposed Wind Farm in Scott River. This excludes the Western Power 132kV existing powerline and Beenup Substation.

The Development footprint spans 3,597 hectares (ha), however the actual ground disturbance during operation is expected to be ~1-2% and while it is expected to be ~4% during construction and decommissioning.

The DP scope considers the life cycle including:

- Development, revision, and stakeholder engagements during planning and operational phases; followed by.
- Planning, waste, and rehabilitation management strategies implemented during deconstruction and rehabilitation phases; and,
- Verification of rehabilitation performance relative to completion criteria during monitoring and relinquishment.

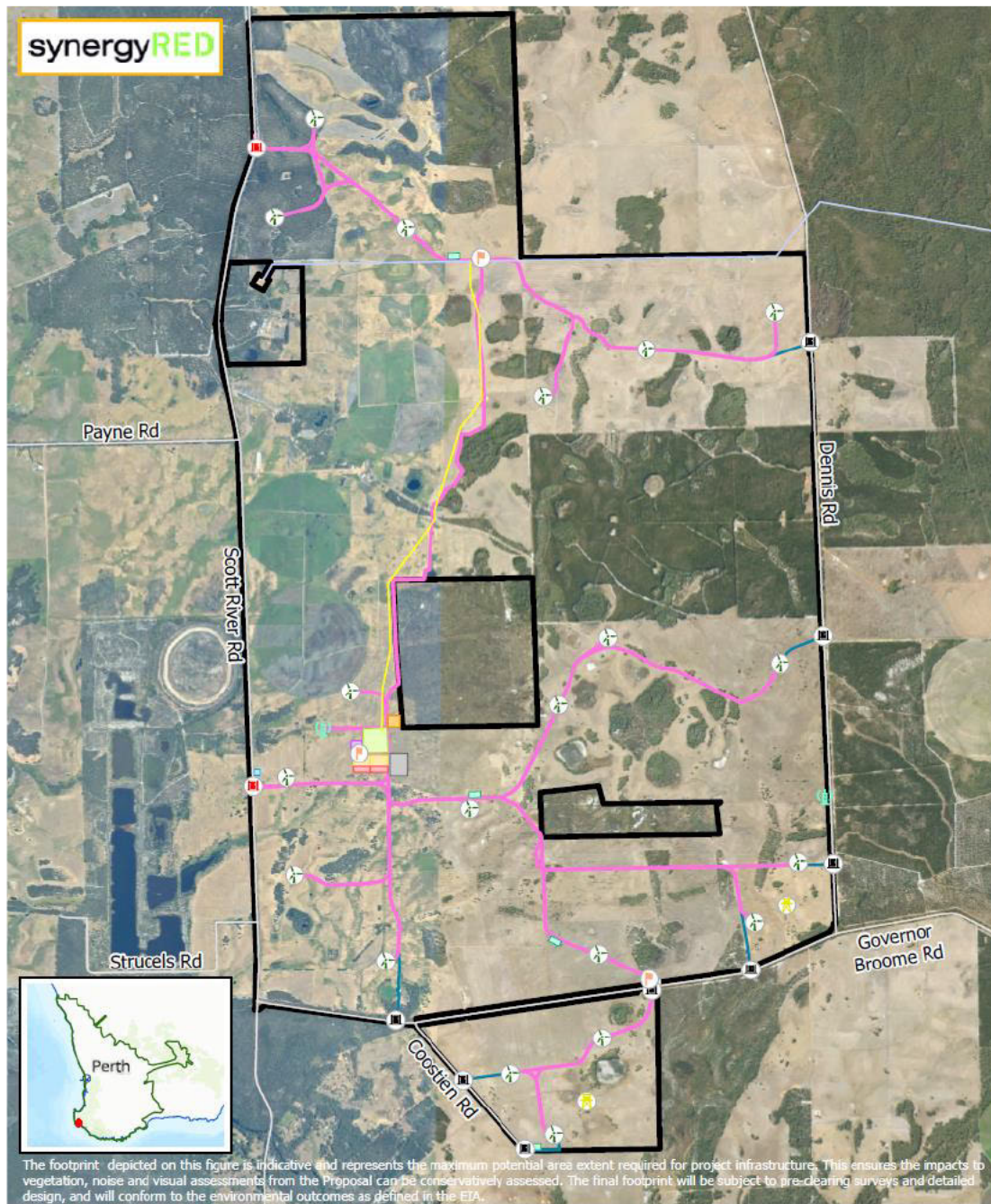
1.4 Validity and review of DP

This management plan is planned to be reviewed 15 years after energisation and every five years thereafter until the end of the 30-year operational period, or sooner if there are significant changes.

The review will consider advancements in technology, market conditions for reused and scrap materials, changes in environmental legislation, changes to stakeholder sentiment/expectations or change in land zoning, updates in legislation and guidelines, lessons learned from similar projects, and any necessary project approvals for decommissioning and rehabilitation.

1.5 Site description

The proposed wind farm in the Scott River region, is within predominantly cleared farmland, blue gum plantation and adjacent road. The Proposal consists of up to 20 wind turbines, with associated infrastructure comprised of wind monitoring and communication towers, an operation and maintenance area, substation and transmission infrastructure, internal access roads, public viewing area and additional supporting infrastructure (e.g., water storage, concrete batching plant, construction site offices and laydown, borrow pits and dewatering and ASS management infrastructure).



Legend

Wind Turbine	Existing 132 kV Beensup to Manjimup Transmission Line	Project substation
Wind Monitoring Mast	Project Transmission Line	Operation and Maintenance Area
Communication Tower	Roads	Construction Laydown Area
Water Tank	Concrete Batching Plant	Borrow Pit
Main Site Entrance	Construction Laydown Area	Internal access roads
Alternative Emergency Access	Construction Site Offices	Existing track - emergency access
	Public Viewing Area	Development Envelope

Scale @ A4, 1:45,000

Proposed Wind Farm in Scott River (Indicative Layout)

Copyright © Electricity Generation and Retail Corporation trading as Synergy (ABN 68 673 830 106) (Synergy) 2025. This map and its contents are owned or licensed by Synergy. Except as permitted under the Copyright Act 1968 (Commonwealth of Australia), no part of this document may be reproduced, adapted, transmitted, broadcast, published or performed in public in any form, or by any means (graphic, electronic, mechanical or otherwise), without the specific written permission from Synergy. While Synergy has made all reasonable efforts to ensure the accuracy of this data, Synergy does not guarantee that this map is without flaw of any kind and disclaims all liability for any errors, loss or other consequence which may arise from relying on any information depicted.

Created By: [Redacted] Date: 3/07/2025
 Map Number: 00189 PCS: GDA2020 MGA Zone 50

Figure 2 Indicative layout - Proposed wind farm in Scott River

2 Proponent commitments

2.1 Funding

The Proponent holds full financial liability for the decommissioning of the wind farm. The Proponent is responsible for ensuring that all decommissioning works are adequately funded. This obligation rests solely with the Proponent and does not extend to the landowner or any external stakeholders.

Where applicable, the lessor may choose to pursue an alternative arrangement that is commercially suitable to their interests.

This document will be reviewed periodically throughout the life of the project to ensure that the financial responsibility for decommissioning remains clearly defined and that the wind farm's decommissioning is fully funded.

2.2 Decommissioning of the site

At decommissioning, the Proponent commits to removing all above-ground infrastructure, including turbines, substations, and overhead powerlines, and rehabilitating the land to a state agreed upon with the landowners, and in any event to a state suitable for the prevailing agricultural land use. This may include regrading, topsoil replacement, and revegetation.

Prior to ceasing operation of the wind farm, the Proponent will ensure that appropriate funding is in place to cover the costs of decommissioning and site rehabilitation. The Proponent commits to periodically reviewing and adjusting the decommissioning plan to account for changes in technology, market conditions, and regulatory requirements, and considering alternative arrangements that suit landowners, such as retaining certain infrastructure for future use.

3 Decommissioning Process

3.1 Dismantling and Removal of Wind Turbines for refurbishment

Wind turbines will be electrically disconnected, drained of all liquids, and dismantled, with blades, nacelles, rotors, and towers removed by crane. Other components like transformers and inverters will also be removed for recycling, sale, or disposal.

A crane is expected to remove the blades. Any external components, including transformers and inverters, will be removed from their foundations, and placed on the lay-down site near the wind turbine constituents.

The removal of the components from the site will be coordinated to minimise an impact to the environment and existing infrastructure. All non-salvageable waste streams will be assessed and will be managed according to Landfill Waste Classifications and Waste Definitions 1996 (DWER 2019).

3.2 Removal of foundations, roads, and hardstands

Below ground infrastructure will be removed and rehabilitated to the extent agreement with landowners. It is anticipated that these areas can be rehabilitated to its former use or alternatively the prevailing agricultural land use at the time of decommissioning in the event that the land use changes. The area is planned to be covered with available soil and revegetated. Hardstands and crane pad areas intend to be rehabilitated post-construction. Access tracks and roads may be retained or rehabilitated based on the landowner's preference. Disposal and recycling of materials will be managed accordingly.

If a landowner wishes to retain the access tracks and roads, the Proponent will consider the request.

3.3 Removal of electrical infrastructure

Electrical infrastructure at a wind farm including all Proponent owned overhead power line poles and conductors connecting the project to the substation will be removed. Materials and components, such as steel, conductors, switches, and transformers will be reused, sold as scrap, recycled, or repurposed where possible.

If the removal of transmission line poles poses an environmental risk, the poles may be cut at the base, flush with the ground level.

An environmental assessment plan will be completed prior to decommissioning of buried cables to determine whether excavation and removal will cause more harm than leaving the buried infrastructure in place. If removal is the preferred option, activities will be conducted to minimise the environmental impact, with disturbed areas backfilled and graded to match the surrounding land.

3.4 Removal of buildings

Prior to commencing decommissioning works for the offices, amenities, storage areas, control rooms, workshops, and car parks, the Proponent will consider any landowner requests to retain them.

Facilities that require removal will be decommissioned and either reused, sold as scrap material, or disposed of at an authorised waste facility. Car parks including the viewing car park on Scott River Road will be rehabilitated in accordance with the procedures used for access tracks. Additionally, any remaining infrastructure will be evaluated for potential repurposing to benefit the local community or environment, ensuring a sustainable and responsible decommissioning process.

3.5 Removal of monitoring equipment

Meteorological Masts (Met Masts) will be removed from site with the foundation footings cut off at a minimum 500mm and the area rehabilitated to its previous use. The steel from the Met Masts will be recycled or repurposed.

3.6 Progressive rehabilitation

The Proponent, where practicable, will conduct opportunistic progressive rehabilitation prior to the closure of the wind farm site. Progressive rehabilitation can be undertaken on areas no longer required or identified as requiring rehabilitation ahead of broader site decommissioning.

This work can identify the most effective methods for restoring surrounding vegetation in areas disturbed by wind farm infrastructure, such as turbine pads, access roads, and substations. By testing planting techniques, soil treatments, and erosion control measures, the Proponent aims to ensure the land can support sustainable vegetation and return to a stable, post-operational condition.

The outcomes of these trials will inform the broader rehabilitation strategy, helping the Proponent meet environmental obligations and stakeholder expectations before the site is formally closed and returned to its intended future use.

3.7 Completion criteria

Prior to the decommissioning process commencing, completion criteria will be developed and endorsed by the relevant landowner(s). These criteria will allow for the definition of specific endpoints of revegetation targets to be identified and tracked. A decommissioning and rehabilitation close-out report will be developed as evidence to support the meeting of the specified completion criteria.

3.8 Monitoring

To ensure long-term success and tracking of performance relative to completion criteria, periodic site monitoring will be undertaken post-decommissioning. The type and frequency of monitoring will be the subject of consultation with landowners prior to decommissioning. The outcomes of the monitoring will be recorded. Monitoring will inform any required remedial or maintenance works.

3.9 Adaptive management and contingencies

Rehabilitation of the disturbed area may need to be conducted over a period and will be monitored to ascertain that completion criteria are achieved by the landowner in consultation with the Proponent. There will be opportunity for ongoing refinements of the program as the rehabilitation progresses at the Site. An important element of this will be to maintain accurate records of the rehabilitation work completed in the form of spatial, written, and photographic data. Where the need for change in the rehabilitation prescription is identified, this will be done in consultation with relevant stakeholders. The adaptive management framework should aim to follow the feedback process of Plan, Do, Review.

DRAFT

- ... thermal or che
- w. Treat: Involves preparing waste materials for reuse through processes such as sorting, cleaning, or mechanical processing.
- 3. **Disposal** – The final option, involving the environmentally responsible disposal of waste that cannot be reused, treated, or recovered, typically through landfills or incineration with energy recovery.



Figure 3 Wind-turbine-recycling-report-2023.pdf (cleanenergycouncil.org.au)

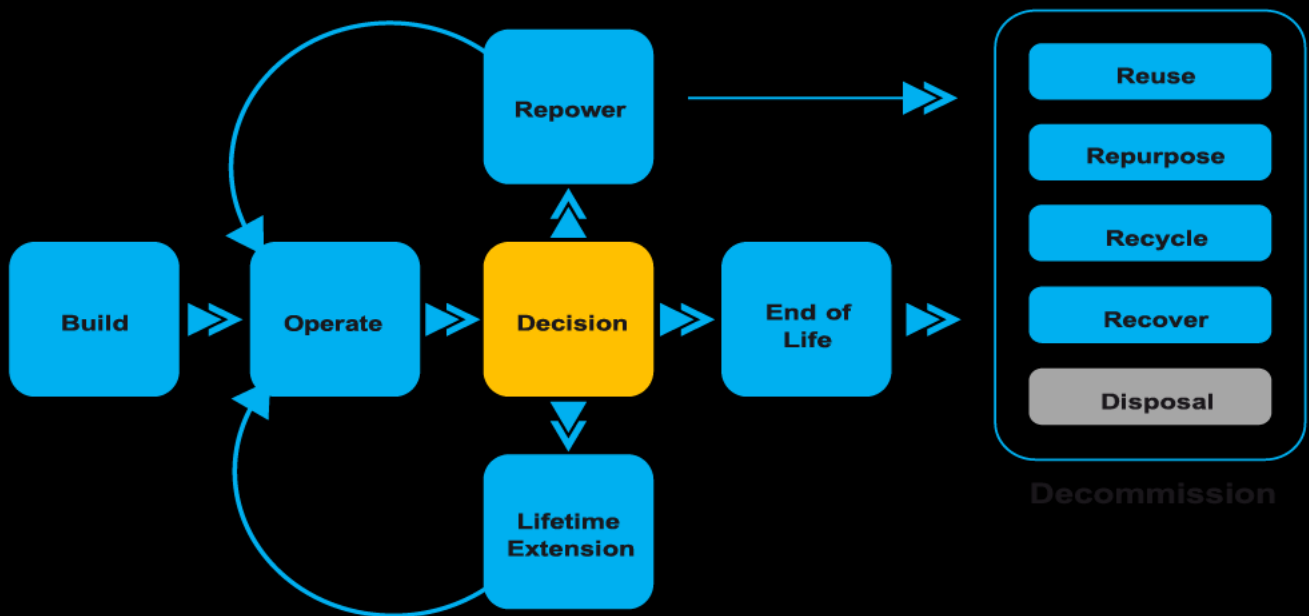


Figure 4 Wind-turbine-recycling-report-2023.pdf (cleanenergycouncil.org.au)

Soil and Water Management

Soil and water management will be carried out in accordance with the Acid Sulfate Soil Management Plan, which may include an Acid Sulfate Soil Management Plan and an Acid Sulfate Soil Management Plan. All activities will be undertaken to ensure full compliance with the relevant regulations and best practice standards.

4.3 Remediation

There is a very low likelihood for contamination to be present within the site during decommissioning. Should any activity occur throughout the life of the turbine, the potential for soil or water contamination, investigations will be undertaken to determine the nature and extent. If an unacceptable risk of contamination is identified, a site assessment will be undertaken, and necessary remediation will be undertaken within the site boundaries.

5 Stakeholder Engagement

5.1 Record of stakeholder engagement

Records of stakeholder engagement undertaken prior, during and following decommissioning of the site will be maintained.

5.2 Landowner consultation

Engagement with landowners will be a key focus throughout the decommissioning process. One-on-one discussions, or equivalent engagement, will be undertaken to understand their preferences regarding the removal or retention of infrastructure on the site.

- ii. Distribution of newsletters, fact sheets,
- iii. Use of local media and social media channels to reach
- iv. Designated contact points for inquiries and feedback.

6 Decommissioning Schedule

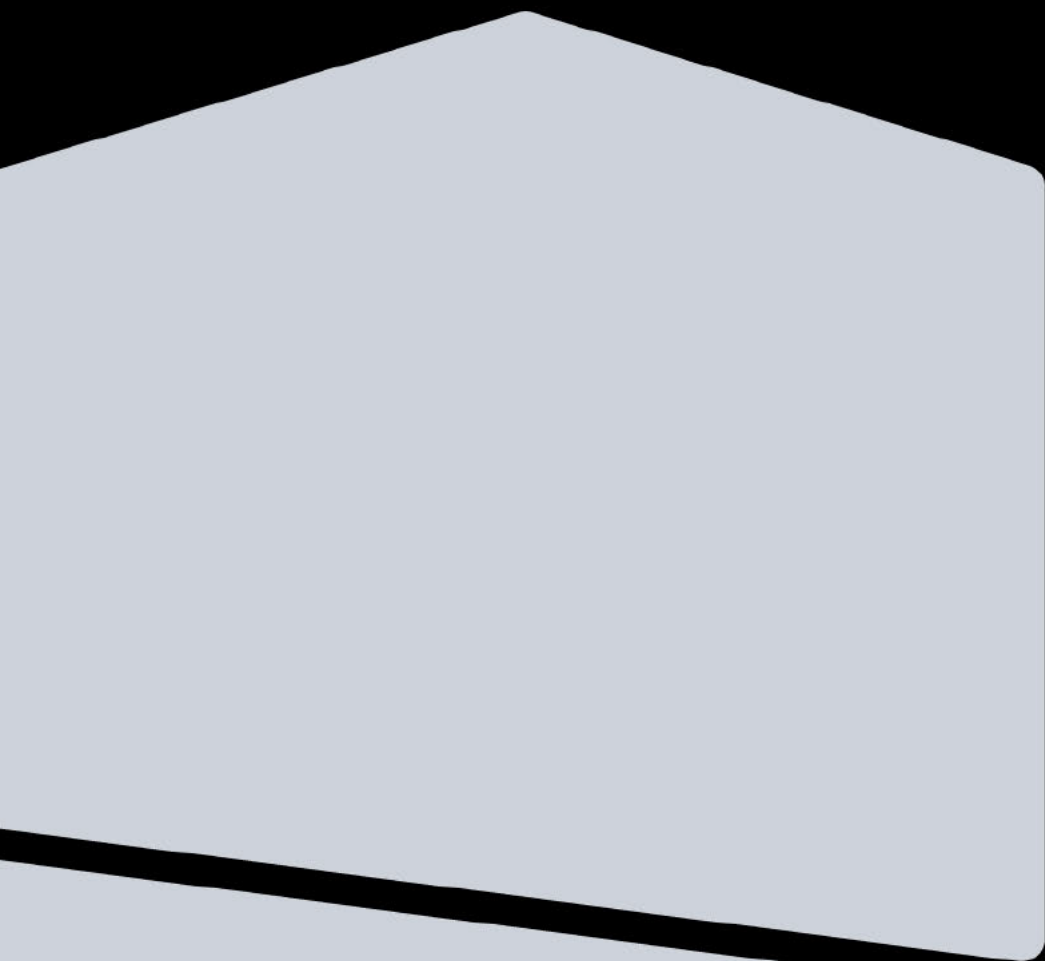
A detailed decommissioning schedule will be developed in future version. Once the wind farm is not repowered or its operational life extended, decommissioning will commence within 6 to 8 months after electricity generation has permanently ceased. Any decommissioning involving major infrastructure removal is anticipated to be completed within 12 months.

Following this, ongoing site monitoring and rehabilitation efforts will be undertaken in accordance with relevant local legislation, regulatory requirements, and any agreements with the local community or landowners.

6.1 Risk assessment.

To determine the method, sequence and timing of the individual activities involved in decommissioning the wind farm, the identification and management of key risks is necessary.

A record of project-related risks, in the form of a risk register that is updated throughout the project lifecycle, should be maintained. This register will identify risks and mitigations to reduce likelihood or consequence and thereby reduce overall risk. The risk register process that will continue throughout the life of the project and into decommissioning.



synergyRED