



WESTERN AUSTRALIA
MINISTER FOR ENVIRONMENT

Ass # 222
Bull # 396
State # 077

STATEMENT THAT A PROPOSAL MAY BE IMPLEMENTED (PURSUANT TO THE
PROVISIONS OF THE ENVIRONMENTAL PROTECTION ACT 1986)

PHASE II EXPANSION OF GIDJI GOLD ROASTER, NEAR KALGOORLIE

This proposal may be implemented subject to the following conditions:

1. The proponent shall adhere to the proposal as assessed by the Environmental Protection Authority and shall fulfil the commitments made in the Notice of Intent for the proposal (copy of commitments attached).
2. Prior to the commissioning of the Phase II roaster, the proponent shall modify as necessary the existing sulphur dioxide monitoring programme to take into account the greater output of the Phase II roaster, to the satisfaction of the Minister for Environment.
3. Prior to the commissioning of the Phase II roaster, the proponent shall prepare a report, to the satisfaction of the Minister for Environment, detailing the sulphur dioxide management programme to predict and control emissions from the second roaster which may affect Kalgoorlie and identify any improvements which may be necessary to accommodate the increased stack emission with both roasters operating.
4. Prior to the commissioning of the Phase II roaster, the proponent shall modify as necessary the design and implementation of the existing vegetation monitoring programme to take into account the greater output from Phase II, to the satisfaction of the Minister for Environment.
5. The proponent shall, after an initial interval of not more than two years, and thereafter as determined by the Minister for Environment, assess the environmental impacts of SO₂ emissions from the Gidji roaster and report on these impacts to the Environmental Protection Authority, setting them in a regional and national context.

Published on

11 SEP 1989

The report shall also assess mechanisms available for removal of SO₂ from the roaster emissions and provide an assessment of the associated financial and environmental costs and benefits.

Following advice from the Environmental Protection Authority, the Minister for Environment may, after giving consideration to the remote location of the roaster, order appropriate mechanisms for the reduction or removal of SO₂ emissions.

6. The proponent shall refer to the Environmental Protection Authority any proposal to expand the project beyond that described in the Notice of Intent for Phase II of the Gidji roaster.
7. Prior to commissioning, or at such later time as set by the Minister for Environment, the Minister for Planning shall ensure that:
 - (1) the roaster site is zoned appropriately, such that other activities are excluded; and
 - (2) a buffer area around the roaster site is created (and zoned) to the satisfaction of the Environmental Protection Authority within which residential use/development is not permitted.
8. The proponent shall ensure that the Croesus roaster is decommissioned no later than two months after the final commissioning of Phase II of the Gidji roaster.
9. At least six months prior to decommissioning of the Gidji site, the proponent shall prepare a decommissioning and rehabilitation plan to the satisfaction of the Environmental Protection Authority on the advice of the Minister for Mines, for the site and its environs. The implementation of this plan shall be the responsibility of the proponent and the work shall be carried out to the satisfaction of the Environmental Protection Authority on the advice of the Minister for Mines.
10. No transfer of ownership, control or management of the project which would give rise to a need for the replacement of the proponent shall take place until the Minister has advised the proponent that approval has been given for the nomination of a replacement proponent. Any request for the exercise of that power of the Minister shall be accompanied by a copy of this statement endorsed with an undertaking by the proposed replacement proponent to carry out the project in accordance with the conditions and procedures set out in the statement.

Bob Pearce, MLA
MINISTER FOR ENVIRONMENT

- 8 SEP 1989

TABLE 8

PROPOSER'S COMMITMENTS AND MANAGEMENT STRATEGIES

ENVIRONMENTAL ISSUE	PROPOSER'S COMMITMENTS	MANAGEMENT STRATEGIES
Emission Controls	The Proponent undertakes to comply with emission guidelines.	Roaster off-gases will be treated in a gas handling system to limit solid particles to 250 mg/Nm ³ , and arsenic and its compounds to 10 mg/m ³ . (A platform and sampling ports for monitoring of stack emissions has already been constructed.)
Air Quality	The Proponent undertakes to maintain an appropriate level of sulphur dioxide monitoring, and to develop a predictive control strategy.	A roaster control programme will be developed to include prediction of adverse meteorological conditions and feedback of sulphur dioxide monitoring data. Procedures will be developed for the collection of data to enable calculation of the total tonnage of sulphur dioxide released to the atmosphere each day by the satellite roaster.
Flora and Fauna	The Proponent undertakes to preserve flora and fauna where possible, and continue to monitor sulphur dioxide effects on native vegetation.	Vegetation and stands of trees will be preserved where possible during construction of the premises. Fire management procedures will be implemented. Tailings area will be fenced off to prevent access by larger fauna. Arifaunal use of the tailings pond will be monitored. A vegetation monitoring programme has been prepared and implemented prior to the commissioning of the first roaster to enable a baseline description of the vegetation. This programme will be continued at regular intervals. A research programme into the tolerance of native vegetation of the Goldfields Region into fumigation by sulphur dioxide, coordinated by the EPA, will be supported.
Rehabilitation	The Proponent undertakes to rehabilitate the satellite roaster site after decommissioning.	The tailings disposal area, roads and tracks, hardstand areas, and other compacted and cleared ground will be rehabilitated.
Safety Measures and Controls	The Proponent undertakes to comply with all relevant Acts and Regulations.	All relevant Acts and Regulations will be complied with. Operator handling and exposure to dangerous goods will be minimised. Appropriate safety equipment and handling procedures will be employed. Appropriate first aid equipment will be maintained on-site.
Management of Dangerous Goods	The Proponent undertakes to observe all government regulations related to the storage and handling of dangerous goods.	Vessel entry procedures will be developed for tanks that contain noxious materials. Cyanide drums and similar dangerous packaging will be disposed of by burial in a designated area of the tailings pond.

Attachment 1 to Ministerial Statement 77

Change to Proposal

Proposal: Phase II Expansion of Gidji Gold Roaster, Near Kalgoorlie

Proponent: Kalgoorlie Consolidated Gold Mines Pty Ltd

Change: Increase in the size of the Gidji Tailings Storage Facility (from 36ha to 63ha) and alterations to related infrastructure

The total clearance area approved for the Gidji TSF in Ministerial Statement 22 and 77 assessments was 36 hectares (ha), and this is to be expanded to a new total of 63ha. This allows for a minor expansion of the TSF by 4ha, and attributes an area value for TSF associated infrastructure (23ha), which was approved during previous assessments, but was not defined by an area value.

List of Figures:

Figure 1: Infrastructure Layout and Disturbance Boundaries for the Gidji II TSF

Dr Paul Vogel
CHAIRMAN
Environmental Protection Authority
under delegated authority

Approval date: 21 January 2011

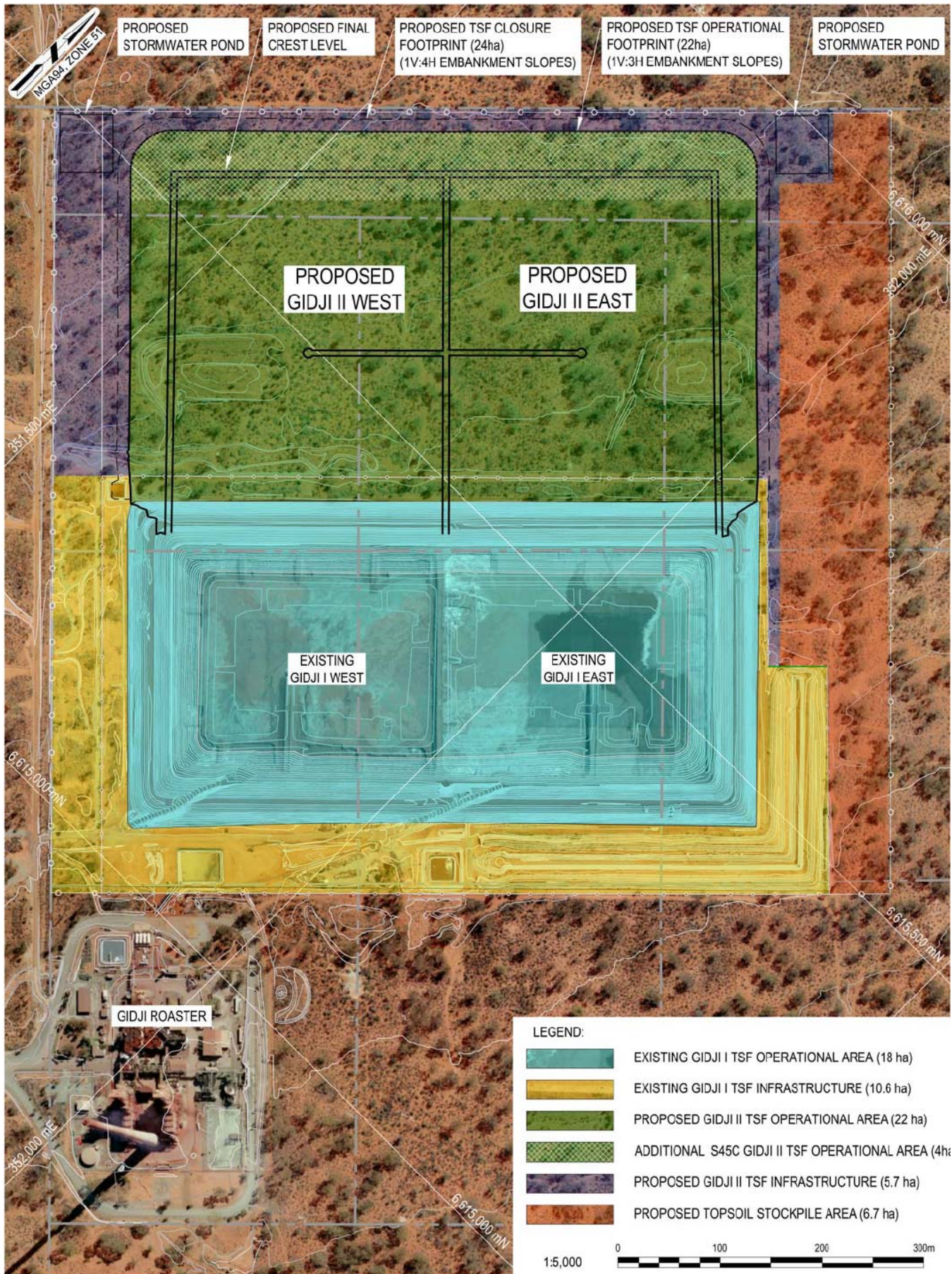


Figure 1
Infrastructure Layout and Disturbance
Boundaries for the Gidji II TSF

Client: KCGM

Project: Section 45C Application -
 Proposed Extension of Gidji Tailings
 Storage Facility



Source:
 Golder Associates

Date:
 22/09/10

Attachment 2 to Ministerial Statement 77

Change to proposal under s45C of the *Environmental Protection Act 1986*

Attachment 2 replaces Attachment 1 of Ministerial Statement 77

Proposal: Phase II Expansion of Gidji Gold Roaster, Near Kalgoorlie

Proponent: Kalgoorlie Consolidated Gold Mines Pty Ltd

Change: Add an Ultra Fine Grinding Mill; close two concentrate roasters; and include the approved processing area in the disturbance boundary of the operation.

Table 1: Summary of proposal

Proposal Title	Phase II Expansion of Gidji Gold Roaster, Near Kalgoorlie
Short Description	<p>Kalgoorlie Consolidated Gold Mines Pty Ltd operates a gold concentrate processing facility at Gidji approximately 17 km north of the City of Kalgoorlie-Boulder (Figure 1).</p> <p>The facility treats refractory sulphide ore concentrate which is transported by road from the Fimiston Plant. Infrastructure includes a carbon-in-pulp (CIP) circuit, 10tph Ultra Fine Grinding Mill, a 30tph Ultra Fine Grinding Mill, two concentrate roasters that would be closed after commissioning of the 30 tph Ultra Fine Grinding Mill, a single 180 m high stack, tailings storage facilities and associated infrastructure.</p>

Table 2: Location and authorised extent of physical and operational elements

Column 1 Element	Column 2 Location	Column 3 Authorised extent
Tailings storage facilities and associated infrastructure	Within "Gidji TSF area" shown in Figure 2.	Clearing of no more than 63 ha within a 73 ha disturbance area.
Concentrate processing area	Within Project disturbance area shown in Figure 2.	Clearing of no more than 10 ha within a 73 ha disturbance area.

Note: Text in **bold** in Table 1, indicates the change to the proposal.

List of Figures:

Figure 1 replaces figure 1 in Attachment 1.

Figure 1: Regional location of the Gidji Operation

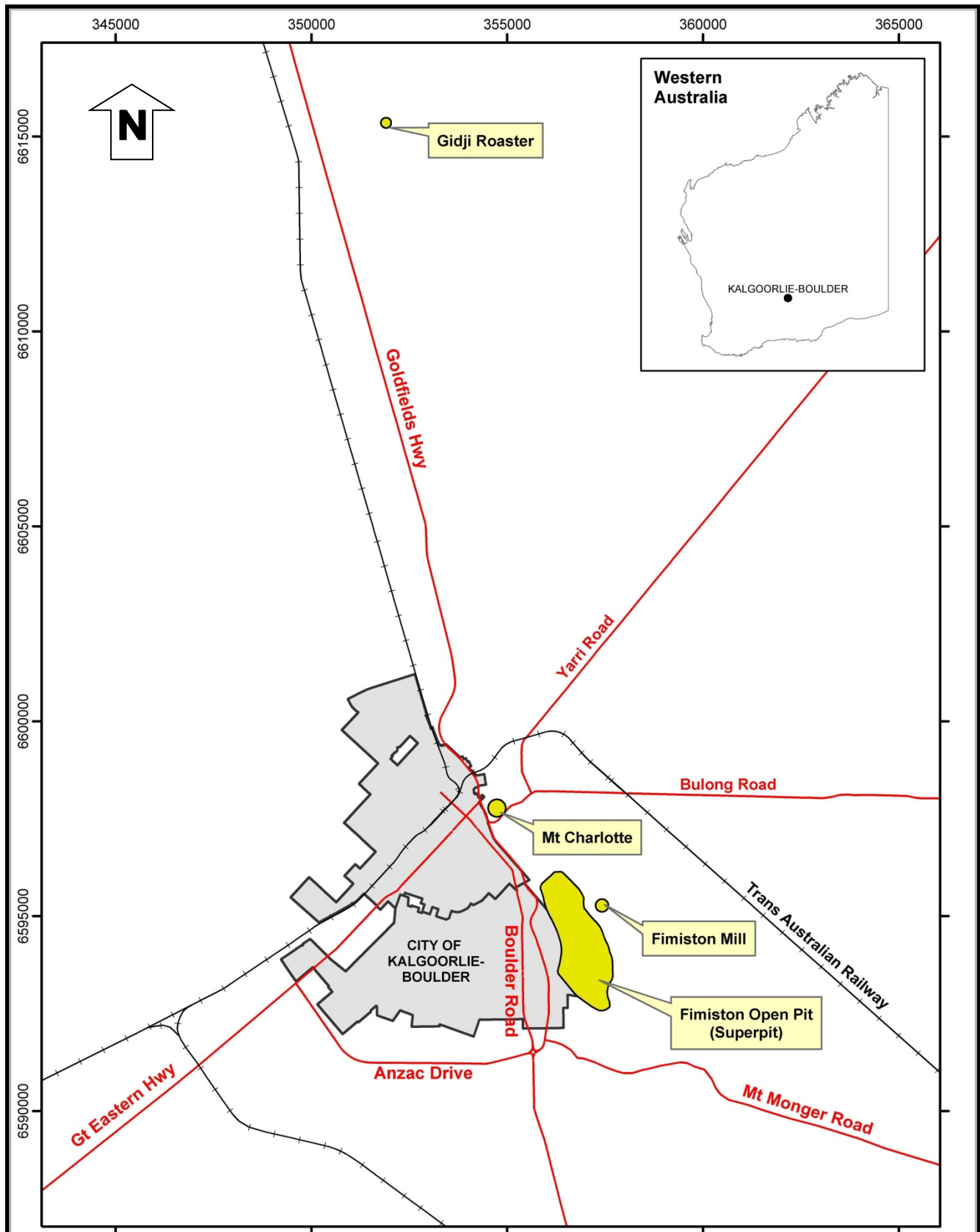
Figure 2: Location of proposal elements and disturbance boundary for the Gidji Operation

[Signed 26 March 2014]

Dr Paul Vogel

CHAIRMAN

Environmental Protection Authority
under delegated authority



KCGM

Gidji Emissions Reduction Project
Section 45C Application

Regional Location

