

THIS DOCUMENT

This document has been produced by the Office of the Appeals Convenor as an electronic version of the original Statement for the proposal listed below as signed by the Minister and held by this Office. Whilst every effort is made to ensure its accuracy, no warranty is given as to the accuracy or completeness of this document. The State of Western Australia and its agents and employees disclaim liability, whether in negligence or otherwise, for any loss or damage resulting from reliance on the accuracy or completeness of this document. Copyright in this document is reserved to the Crown in right of the State of Western Australia. Reproduction except in accordance with copyright law is prohibited.

Published on: 8 December 2016

Statement No. 1045

STATEMENT THAT A PROPOSAL MAY BE IMPLEMENTED
(Environmental Protection Act 1986)

MT GIBSON RANGE MINE OPERATIONS IRON HILL DEPOSITS

Proposal: To mine hematite ore from the Iron Hill and Iron Hill South Deposits located on the Mt Gibson Range, approximately 270 kilometres east-south-east of Geraldton. The proposal also includes the construction of a waste rock landform and support infrastructure.

Proponent: Mount Gibson Mining Limited
Australian Company Number 074 575 885

Proponent Address: Level 1, 2 Kings Park Road
WEST PERTH WA 6005

Assessment Number: 2034

Report of the Environmental Protection Authority: 1570

Pursuant to section 45 of the EP Act it has been agreed that the proposal described and documented in Tables 1 and 2 of Schedule 1 may be implemented and that the implementation of the proposal is subject to the following implementation conditions and procedures:

1 Proposal Implementation

- 1-1 When implementing the proposal, the proponent shall not exceed the authorised extent of the proposal as defined in Table 2 in Schedule 1, unless amendments to the proposal and the authorised extent of the proposal have been approved under the EP Act.

2 Contact Details

- 2-1 The proponent shall notify the CEO of any change of its name, physical address or postal address for the serving of notices or other correspondence within twenty eight (28) days of such change. Where the proponent is a corporation or an association of persons, whether incorporated or not, the postal address is that of the principal place of business or of the principal office in the State.

3 Time Limit for Proposal Implementation

- 3-1 The proponent shall not commence implementation of the proposal after five (5) years from the date on this Statement, and any commencement, prior to this date, must be substantial.
- 3-2 Any commencement of implementation of the proposal, on or before five (5) years from the date of this Statement, must be demonstrated as substantial by providing the CEO with written evidence, on or before the expiration of five (5) years from the date of this Statement.

4 Compliance Reporting

- 4-1 The proponent shall prepare and maintain a Compliance Assessment Plan which is submitted to the CEO at least six (6) months prior to the first Compliance Assessment Report required by condition 4-6, or prior to implementation of the proposal, whichever is sooner.
- 4-2 The Compliance Assessment Plan shall indicate:
 - (1) the frequency of compliance reporting;
 - (2) the approach and timing of compliance assessments;
 - (3) the retention of compliance assessments;
 - (4) the method of reporting of potential non-compliances and corrective actions taken;
 - (5) the table of contents of Compliance Assessment Reports; and
 - (6) public availability of Compliance Assessment Reports.
- 4-3 After receiving notice in writing from the CEO that the Compliance Assessment Plan satisfies the requirements of condition 4-2 the proponent shall assess compliance with conditions in accordance with the Compliance Assessment Plan required by condition 4-1.
- 4-4 The proponent shall retain reports of all compliance assessments described in the Compliance Assessment Plan required by condition 4-1 and shall make those reports available when requested by the CEO.
- 4-5 The proponent shall advise the CEO of any potential non-compliance within seven (7) days of that non-compliance being known.
- 4-6 The proponent shall submit to the CEO the first Compliance Assessment Report fifteen (15) months from the date of issue of this Statement addressing the twelve (12) month period from the date of issue of this Statement and then annually from the date of submission of the first Compliance Assessment Report, or as otherwise agreed in writing by the CEO.

The Compliance Assessment Report shall:

- (1) be endorsed by the proponent's Chief Executive Officer or a person delegated to sign on the Chief Executive Officer's behalf;
- (2) include a statement as to whether the proponent has complied with the conditions;
- (3) identify all potential non-compliances and describe corrective and preventative actions taken;
- (4) be made publicly available in accordance with the approved Compliance Assessment Plan; and
- (5) indicate any proposed changes to the Compliance Assessment Plan required by condition 4-1.

5 Public Availability of Data

5-1 Subject to condition 5-2, within a reasonable time period approved by the CEO of the issue of this Statement and for the remainder of the life of the proposal the proponent shall make publicly available, in a manner approved by the CEO, all validated environmental data (including sampling design, sampling methodologies, empirical data and derived information products (e.g. maps)) relevant to the assessment of this proposal and implementation of this Statement.

5-2 If any data referred to in condition 5-1 contains particulars of:

- (1) a secret formula or process; or
- (2) confidential commercially sensitive information;

the proponent may submit a request for approval from the CEO to not make these data publicly available. In making such a request the proponent shall provide the CEO with an explanation and reasons why the data should not be made publicly available.

6 Flora and Vegetation – Outcome-based Condition Environmental Management Plan

6-1 Prior to the commencement of ground disturbing activities, or as otherwise agreed in writing by the CEO, the proponent shall prepare and submit a Condition Environmental Management Plan to the satisfaction of the CEO on advice of Parks and Wildlife to demonstrate that the following **environmental outcome** will be met:

- (1) no adverse effects on native vegetation on the Mt Gibson Range, including the Rare Flora species, outside the development envelope shown in Schedule 1.

6-2 The plan required by condition 6-1 shall include provisions required by condition 6-3 to address indirect impacts on Rare Flora (*Darwinia masonii* and

Lepidosperma gibsonii) and vegetation health including from, but not limited to dust, weeds and fire as a result of implementation of the proposal.

6-3 The Condition Environmental Management Plan shall:

- (1) specify **trigger criteria** that will trigger the implementation of trigger level actions if exceeded;
- (2) specify **threshold criteria** that:
 - (a) provides a limit, which the proponent must not exceed, beyond which the environmental outcome identified in condition 6-1 is not achieved; and
 - (b) will trigger the implementation of **threshold contingency actions** if exceeded.
- (3) specify **monitoring** to determine if trigger criteria and threshold criteria are exceeded;
- (4) specify **trigger level actions** to be implemented in the event that trigger criteria have been exceeded;
- (5) specify **threshold contingency actions** to be implemented in the event that threshold criteria are exceeded;
- (6) provide the format and timing for the reporting of monitoring results and analysis against threshold criteria to demonstrate that condition 6-1 has been met over the reporting period in the Compliance Assessment Report required by condition 4; and
- (7) provide for reporting of exceedances of the threshold criteria.

6-4 After receiving notice in writing from the CEO that the Condition Environmental Management Plan satisfies the requirements of condition 6-3 for condition 6-1, the proponent shall, prior to the commencement of ground disturbing activities:

- (1) commence implementation of the provisions of the Condition Environmental Management Plan; and
- (2) continue to implement the Condition Environmental Management Plan until the CEO has confirmed by notice in writing that the proponent has demonstrated the outcome specified in condition 6-1 has been met.

6-5 In the event that monitoring indicates exceedance of threshold criteria specified in the Condition Environmental Management Plan, the proponent shall:

- (1) report the exceedance in writing within seven (7) days of the exceedance being identified;
- (2) immediately implement the threshold contingency actions specified in the Condition Environmental Management Plan and continue implementation of those actions until the trigger criteria are being met, or until the CEO has confirmed by notice in writing that it has been demonstrated that the environmental outcome in conditions 6-1 is being

met and implementation of the trigger level actions and/or threshold contingency actions are no longer required;

- (3) investigate to determine the cause of the threshold criteria being exceeded;
- (4) identify additional measures required to prevent the threshold criteria being exceeded in the future;
- (5) investigate to determine potential environmental harm or alteration of the environment that occurred due to threshold criteria being exceeded; and
- (6) provide a **report to the CEO** within ninety (90) days of the exceedance being reported. The report shall include:
 - (a) details of threshold contingency actions implemented;
 - (b) the effectiveness of the threshold contingency actions implemented, monitored and measured against trigger criteria and threshold criteria;
 - (c) the findings of the investigations required by condition 6-5(3) and 6-5(5);
 - (d) additional measures to prevent the threshold criteria being exceeded in the future; and
 - (e) measures to control or abate the significant adverse environmental impacts which may have occurred.

6-6 The proponent:

- (1) may review and revise the Condition Environmental Management Plan, or
- (2) shall review and revise the Condition Environmental Management Plan as and when directed by the CEO.

6-7 The proponent shall implement the latest revision of the Condition Environmental Management Plan, which the CEO has confirmed by notice in writing, satisfies the requirements of condition 6-3.

7 Offsets

7-1 The proponent shall undertake an offset, as outlined in conditions 7-2 and 7-8, with the objective to counterbalance the significant residual impact on:

(1) 1,327 plants of *Darwinia masonii*; and

(2) 863 plants of *Lepidosperma gibsonii*,

as a result of the implementation of the proposal.

7-2 Within six months of issue of this Statement, or as otherwise agreed in writing by the CEO, the proponent shall prepare, in consultation with Parks and Wildlife and submit a *Darwinia masonii* Offset Plan to the CEO.

The objective of the Plan is to ensure a self-sustaining population of at least 1,327 mature individuals of *Darwinia masonii*.

The *Darwinia masonii* Offset Plan shall:

- (1) describe the plant material to be used for translocation, to promote the viability of the species, on advice of Parks and Wildlife;
- (2) identify suitable translocation sites on previously disturbed areas, or areas otherwise agreed to by Parks and Wildlife, on the Mt Gibson Range;
- (3) identify the number of mature plants that each translocation site could support;
- (4) describe the ongoing protection measures afforded to the translocated plants from threats including, but not limited to, fire and future exploration and mining;
- (5) identify completion criteria to demonstrate that the translocated plants have established, are reproducing and there is a soil-stored seedbank;
- (6) identify timeframes and responsibilities for implementation;
- (7) identify reporting procedures, including the content, format, timing and frequency for the reporting of monitoring data against the completion criteria, in accordance with condition 7-3; and
- (8) identify management and contingency measures should completion criteria not be met.

7-3 After receiving notice in writing from the CEO that the *Darwinia masonii* Offset Plan satisfies the requirements of condition 7-2, the proponent shall:

- (1) implement the management actions in accordance with the requirements of the *Darwinia masonii* Offset Plan; and
- (2) continue to implement the management actions in accordance with the requirements of the *Darwinia masonii* Offset Plan until the CEO has confirmed by notice in writing that it has been demonstrated that the objective in condition 7-1 has been met.

7-4 The proponent shall monitor the success of implementation of the *Darwinia masonii* Offset Plan required by condition 7-2 and provide a written report, including monitoring data, to the CEO and Parks and Wildlife every twelve (12) months on the progress of this project until completion criteria have been met. The first report must be submitted within fifteen (15) months of receiving the notice under condition 7-3.

7-5 Should the objective of the *Darwinia masonii* Offset Plan required by condition 7-2 not be achieved within ten (10) years from implementation of the Plan, the proponent shall submit a revised *Darwinia masonii* Offset Plan to the satisfaction of the CEO, outlining management strategies to achieve the outcome specified in condition 7-2. The revised plan must be submitted within three months of the ten (10) year period lapsing.

7-6 The proponent:

- (1) may review and revise the *Darwinia masonii* Offset Plan, or

- (2) shall review and revise the *Darwinia masonii* Offset Plan as and when directed by the CEO.
- 7-7 The proponent shall implement the latest revision of the *Darwinia masonii* Offset Plan, which the CEO, on advice of Parks and Wildlife, has confirmed by notice in writing, satisfies the requirements of condition 7-2.
- 7-8 Within six months of issue of this Statement, or as otherwise agreed in writing by the CEO, the proponent shall prepare, in consultation with Parks and Wildlife and submit a *Lepidosperma gibsonii* Offset Plan to the CEO.

The objectives of the *Lepidosperma gibsonii* Offset Plan are to:

- confirm the distribution of *Lepidosperma gibsonii*; and
- ensure a self-sustaining population of at least 863 mature individuals of *Lepidosperma gibsonii*.

The *Lepidosperma gibsonii* Offset Plan shall:

- (1) describe a research program, to be carried out by or on behalf of the proponent, to confirm the taxonomic identify, and subsequently the numbers, of *Lepidosperma gibsonii* plants on the surrounding plains of the Mt Gibson Range, to the west of the Great Northern Highway. The outcomes of the research program to be provided to the CEO, Parks and Wildlife and to be made publicly available;
 - (2) describe the plant material to be used for translocation, to promote the viability of the species, on advice of Parks and Wildlife;
 - (3) identify suitable translocation sites on previously disturbed areas;
 - (4) identify the number of mature plants that each translocation site could support;
 - (5) describe the ongoing protection measures afforded to the translocated plants from threats including, but not limited to, fire, grazing and future exploration and mining;
 - (6) identify completion criteria to demonstrate that the translocated plants have established and are reproducing;
 - (7) identify timeframes and responsibilities for implementation;
 - (8) identify reporting procedures, including the content, format, timing and frequency for the reporting of monitoring data against the completion criteria, in accordance with condition 7-9; and
 - (9) identify management and contingency measures should completion criteria not be met.
- 7-9 After receiving notice in writing from the CEO that the *Lepidosperma gibsonii* Offset Plan satisfies the requirements of condition 7-8, the proponent shall:
- (1) implement the research and management actions in accordance with the requirements of the *Lepidosperma gibsonii* Offset Plan; and
 - (2) continue to implement the research and management actions in accordance with the requirements of the *Lepidosperma gibsonii* Offset

Plan until the CEO has confirmed by notice in writing that it has been demonstrated that the objective in condition 7-8 has been met.

- 7-10 The proponent shall monitor the success of implementation of the *Lepidosperma gibsonii* Offset Plan required by condition 7-8 and provide a written report, including monitoring data, to the CEO and Parks and Wildlife every twelve months on the progress of this project until completion criteria have been met. The first report must be submitted within fifteen (15) months of receiving the notice under condition 7-9.
- 7-11 Should the objective of the *Lepidosperma gibsonii* Offset Plan as required by condition 7-8 not be achieved within ten (10) years from implementation of the Plan, the proponent shall submit a revised *Lepidosperma gibsonii* Offset Plan to the satisfaction of the CEO, outlining management strategies to achieve the outcome specified in condition 7-8. The revised plan must be submitted within three months of the ten (10) year period lapsing.
- 7-12 The proponent:
- (1) may review and revise the *Lepidosperma gibsonii* Offset Plan, or
 - (2) shall review and revise the *Lepidosperma gibsonii* Offset Plan as and when directed by the CEO.
- 7-13 The proponent shall implement the latest revision of the *Lepidosperma gibsonii* Offset Plan, which the CEO, on advice of Parks and Wildlife has confirmed by notice in writing, satisfies the requirements of condition 7-8.

[Signed 8 December 2016]

Albert Jacob MLA
MINISTER FOR ENVIRONMENT; HERITAGE

Table 1: Summary of the Proposal

Proposal title	Mt Gibson Range Mine Operations Iron Hill Deposits
Short description	To mine hematite ore from the Iron Hill and Iron Hill South Deposits, located on the Mt Gibson Range, approximately 270 kilometres east-south-east of Geraldton. The proposal is for the construction of two mine pits, a waste rock landform and support infrastructure.

Table 2: Location and authorised extent of physical and operational elements

Column 1	Column 2	Column 3
Elements	Location	Authorised extent
Mine pits, waste rock landform and support infrastructure	Figure 2	Clearing of no more than 87 hectares within the 112 hectare development envelope.

Table 3: Abbreviations and Definitions

Acronym or Abbreviation	Definition or Term
CEO	The Chief Executive Officer of the Department of the Public Service of the State responsible for the administration of section 48 of the <i>Environmental Protection Act 1986</i> , or his delegate.
DMP	Department of Mines and Petroleum
EPA	Environmental Protection Authority
EP Act	<i>Environmental Protection Act 1986</i>
OEPA	Office of the Environmental Protection Authority
Parks and Wildlife	Department of Parks and Wildlife
Self-sustaining population	A population that is self-perpetuating (able to continue indefinitely) without external assistance

Figures (attached)

Figure 1 Regional location

Figure 2 Development envelope and proposal layout

Figure 3 Ridges and significant flora on the Mt Gibson Range

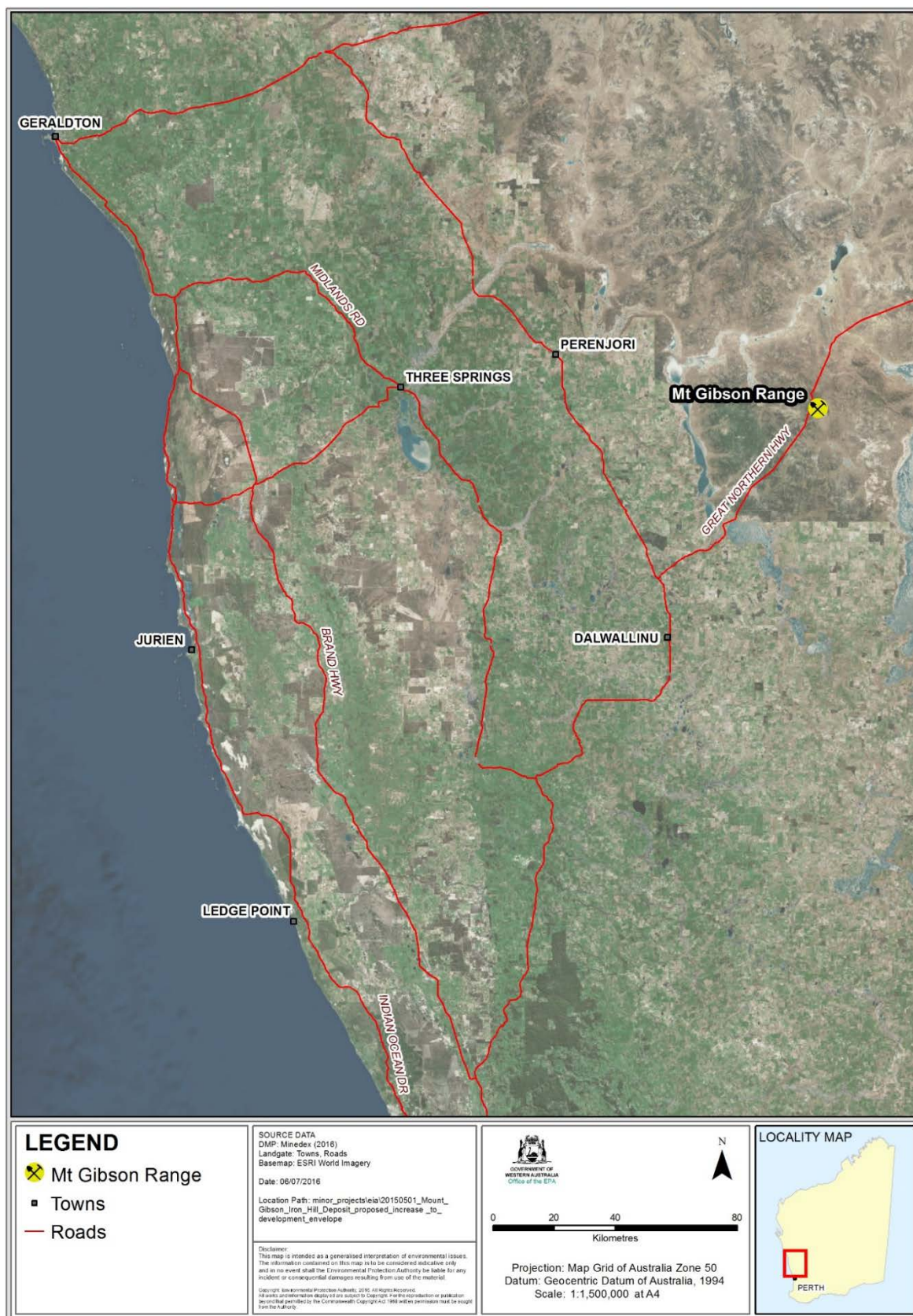


Figure 1 Regional location

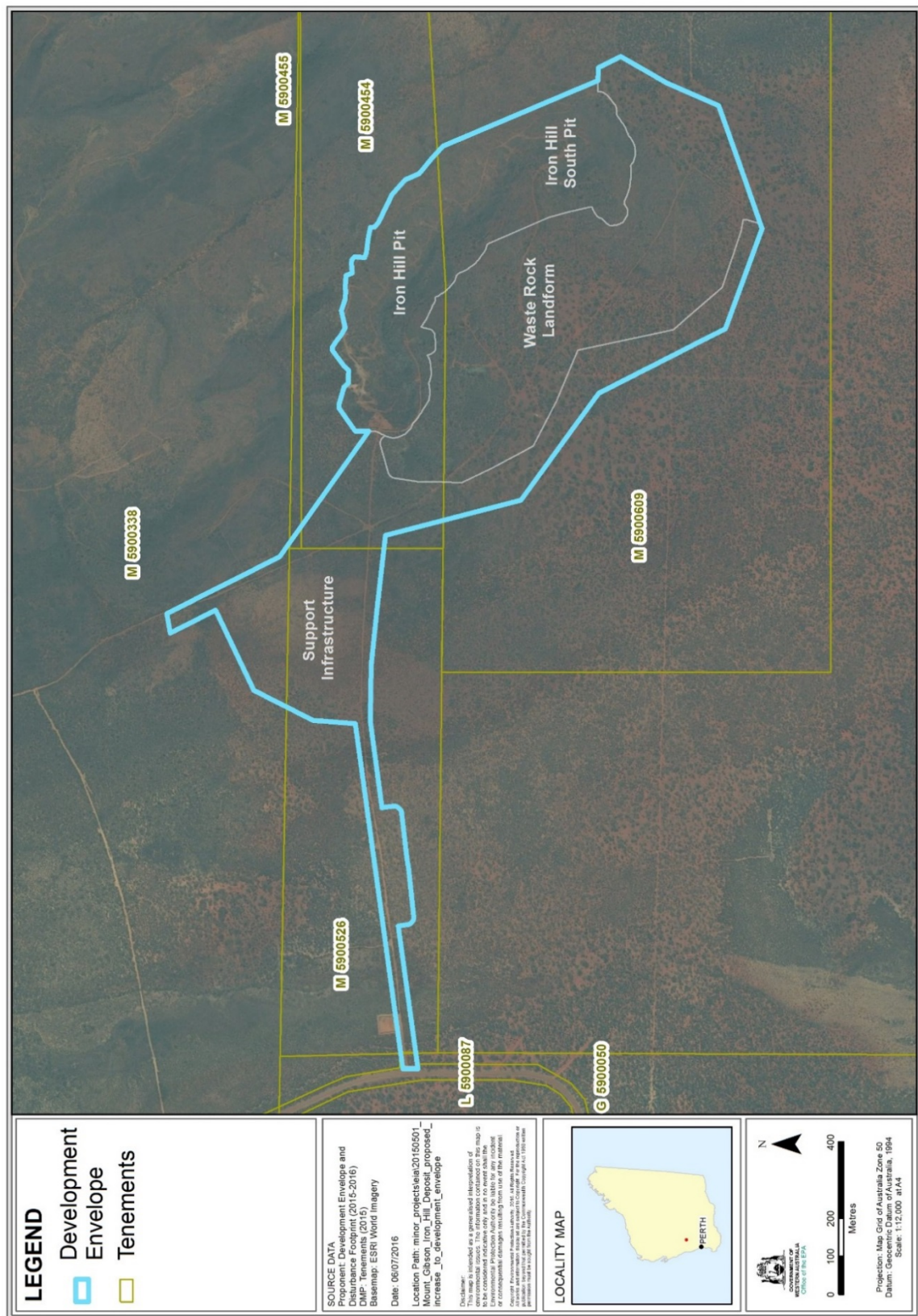


Figure 2 Development envelope and proposal layout

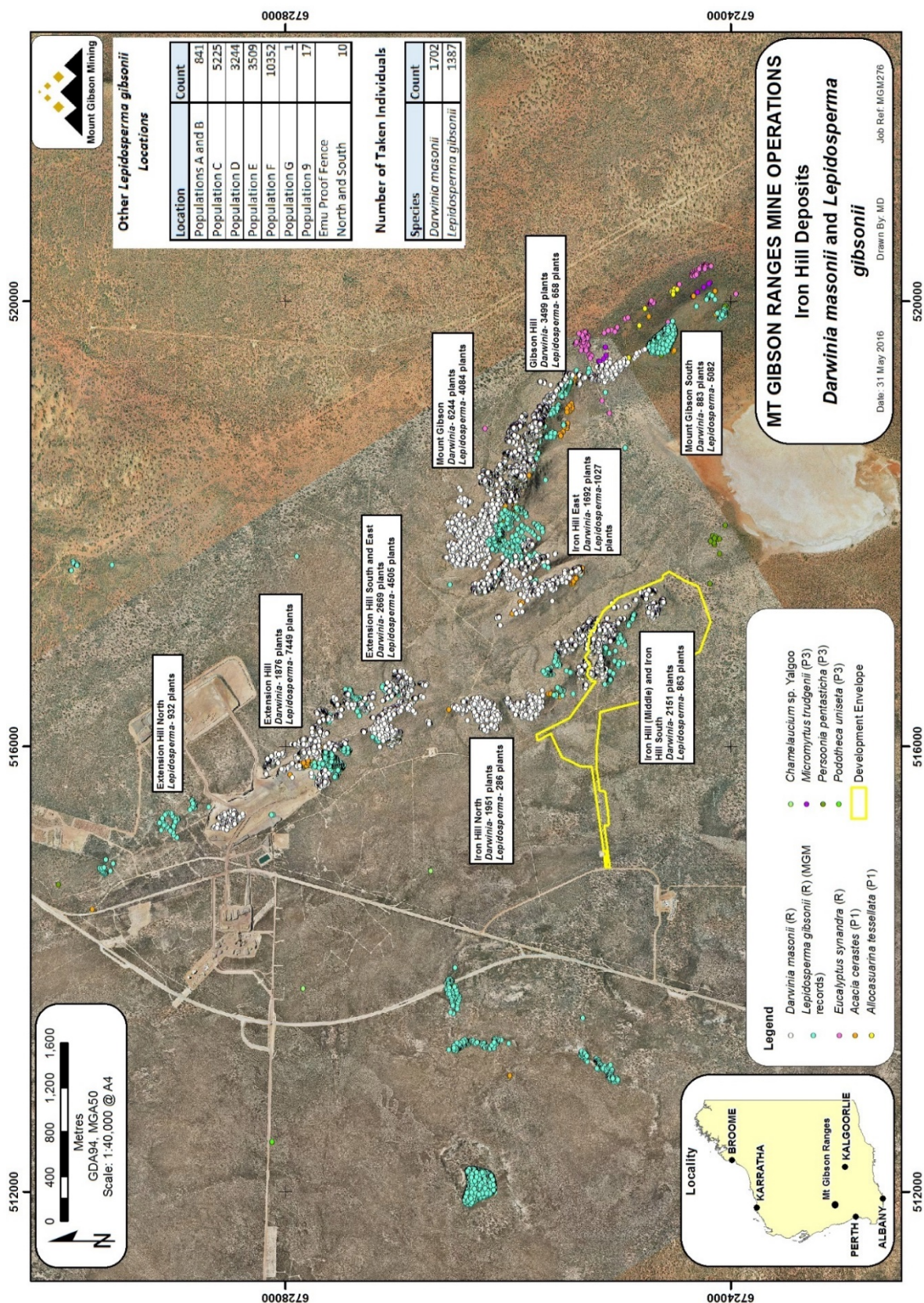


Figure 3 Ridges and significant flora on the Mt Gibson Range

Schedule 2

Coordinates defining the Mt Gibson Range Mine Operations Iron Hill Deposits development envelope are in metres, listed in Map Grid of Australia Zone 50 (MGA Zone 50), datum of Geocentric Datum of Australia 1994 (GDA94).

Coordinate no.	Easting	Northing	Coordinate no.	Easting	Northing
1	516258	6725445	39	516963	6725275
2	516585	6725213	40	516994	6725273
3	516585	6725226	41	517000	6725257
4	516585	6725248	42	517026	6725259
5	516637	6725285	43	517034	6725258
6	516640	6725287	44	517043	6725250
7	516645	6725291	45	517040	6725224
8	516652	6725291	46	517055	6725219
9	516654	6725291	47	517089	6725214
10	516659	6725290	48	517119	6725209
11	516670	6725287	49	517120	6725197
12	516701	6725278	50	517133	6725188
13	516702	6725277	51	517206	6725152
14	516704	6725274	52	517244	6725118
15	516708	6725270	53	517246	6725114
16	516709	6725269	54	517246	6725113
17	516710	6725268	55	517247	6725111
18	516711	6725267	56	517249	6725107
19	516713	6725267	57	517251	6725102
20	516714	6725267	58	517251	6725102
21	516727	6725267	59	517252	6725101
22	516729	6725267	60	517252	6725100
23	516730	6725267	61	517252	6725099
24	516730	6725267	62	517261	6725080
25	516745	6725265	63	517275	6725068
26	516756	6725277	64	517303	6725046
27	516796	6725308	65	517304	6725045
28	516806	6725308	66	517306	6725043
29	516811	6725306	67	517306	6725042
30	516823	6725296	68	517333	6725018
31	516838	6725285	69	517505	6724611
32	516847	6725280	70	517514	6724611
33	516856	6725275	71	517521	6724611
34	516901	6725285	72	517538	6724610
35	516931	6725275	73	517567	6724551
36	516955	6725274	74	517499	6724431
37	516957	6725275	75	517439	6724294
38	516960	6725275	76	517238	6724224

Coordinate no.	Easting	Northing	Coordinate no.	Easting	Northing
77	517122	6724183	120	515291	6725108
78	517119	6724182	121	515290	6725112
79	517116	6724181	122	515290	6725113
80	516942	6724245	123	515288	6725135
81	516853	6724277	124	514919	6725085
82	516814	6724354	125	514919	6725112
83	516802	6724378	126	514919	6725124
84	516685	6724609	127	515058	6725143
85	516578	6724687	128	515817	6725249
86	516504	6724740	129	515825	6725337
87	516404	6724813	130	515826	6725358
88	516312	6725170	131	515905	6725515
89	516188	6725183	132	516106	6725611
90	516117	6725191	133	516115	6725615
91	515970	6725207	134	516058	6725728
92	515838	6725209	135	516055	6725734
93	515823	6725209	136	516055	6725734
94	515597	6725178	137	516056	6725734
95	515598	6725177	138	516107	6725743
96	515598	6725176	139	516167	6725624
97	515601	6725150	140	516255	6725449
98	515601	6725149			
99	515601	6725147			
100	515601	6725143			
101	515600	6725140			
102	515599	6725137			
103	515597	6725134			
104	515594	6725131			
105	515591	6725129			
106	515588	6725128			
107	515585	6725127			
108	515584	6725127			
109	515581	6725127			
110	515460	6725112			
111	515437	6725108			
112	515312	6725095			
113	515310	6725095			
114	515306	6725096			
115	515303	6725096			
116	515300	6725098			
117	515297	6725100			
118	515294	6725102			
119	515292	6725105			