

Appendix D – Flora data

Statistical outputs

Flora species list

Species Matrix

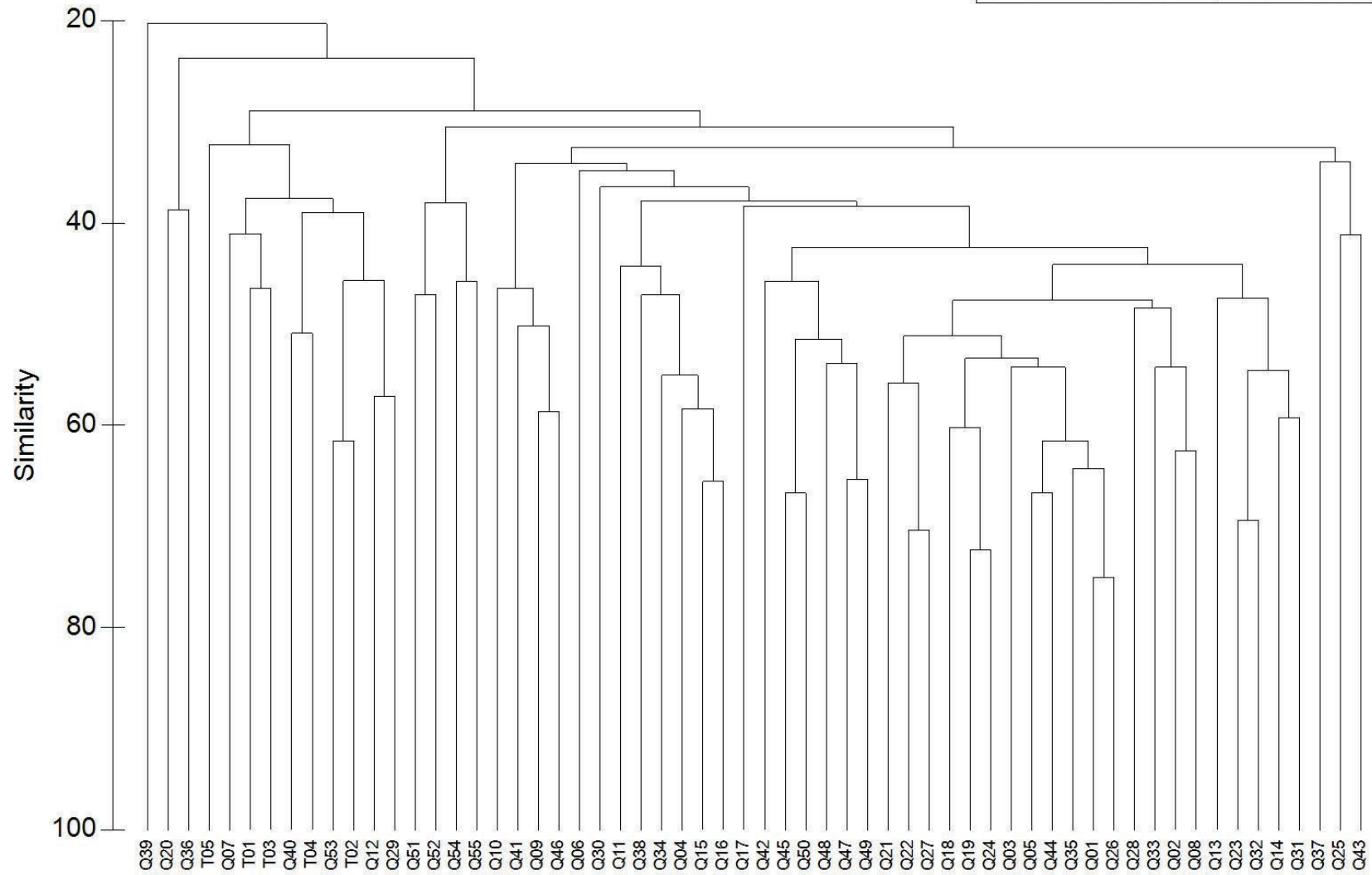
Quadrat Data

Flora likelihood of occurrence assessment guidelines

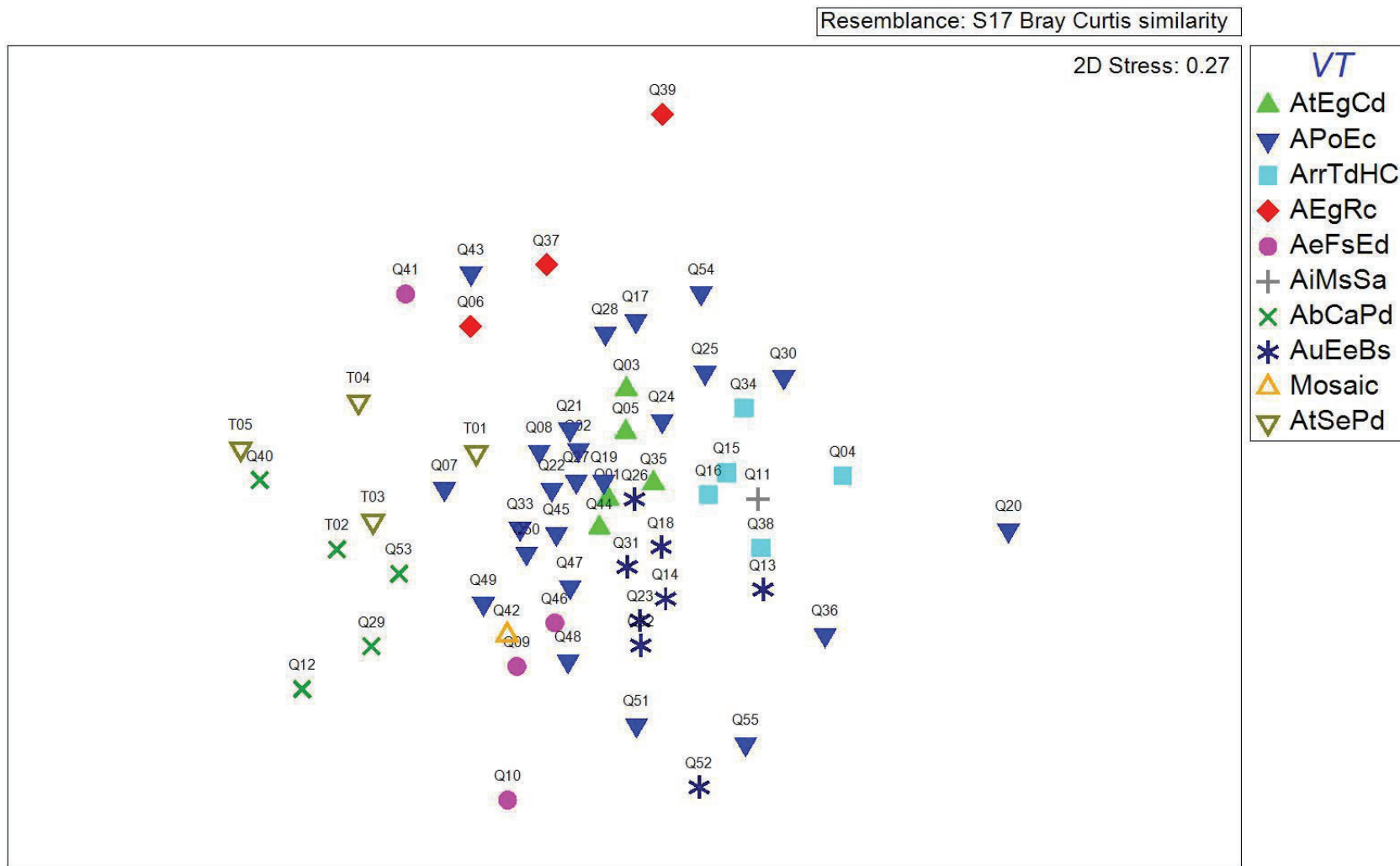
Flora likelihood of occurrence assessment

GHD Quadrats and Transects

Resemblance: S17 Bray Curtis similarity



Dendrogram – GHD quadrats and transects (no singles)



MDS – GHD quadrats and transects (no single taxa)

Flora Species List

Family	Taxon	Status
Aizoaceae	<i>Mesembryanthemum nodiflorum</i>	*
Aizoaceae	<i>Tetragonia cristata</i>	
Amaranthaceae	<i>Ptilotus aervoides</i>	
Amaranthaceae	<i>Ptilotus chamaecladus</i>	
Amaranthaceae	<i>Ptilotus divaricatus</i>	
Amaranthaceae	<i>Ptilotus drummondii</i>	
Amaranthaceae	<i>Ptilotus helipteroides</i>	
Amaranthaceae	<i>Ptilotus nobilis</i>	
Amaranthaceae	<i>Ptilotus obovatus</i>	
Amaranthaceae	<i>Ptilotus polystachyus</i>	
Apocynaceae	<i>Cynanchum viminale</i> subsp. <i>australe</i>	
Apocynaceae	<i>Marsdenia australia</i>	
Araliaceae	<i>Trachymene cyanopetala</i>	
Asparagaceae	<i>Thysanotus manglesianus</i>	
Asteraceae	<i>Actinobole uliginosum</i>	
Asteraceae	Asteraceae sp.	
Asteraceae	<i>Calotis hispidula</i>	
Asteraceae	<i>Calotis multicaulis</i>	
Asteraceae	<i>Cephalipterum drummondii</i>	
Asteraceae	<i>Chthonocephalus pseudevax</i>	
Asteraceae	<i>Dielitzia tysonii</i>	
Asteraceae	<i>Gnephosis brevifolia</i>	
Asteraceae	<i>Helipterum craspedioides</i>	
Asteraceae	<i>Hyalosperma cotula</i>	
Asteraceae	<i>Hyalosperma glutinosum</i> subsp. <i>glutinosum</i>	
Asteraceae	<i>Hyalosperma glutinosum</i> subsp. <i>venustum</i>	
Asteraceae	<i>Lawrencella davenportii</i>	
Asteraceae	<i>Lemooria burkittii</i>	
Asteraceae	<i>Pluchea dentex</i>	
Asteraceae	<i>Podolepis capillaris</i>	
Asteraceae	<i>Podolepis lessonii</i>	
Asteraceae	<i>Pogonolepis muelleriana</i>	
Asteraceae	<i>Rhodanthe chlorocephala</i> subsp. <i>splendida</i>	
Asteraceae	<i>Rhodanthe citrina</i>	
Asteraceae	<i>Rhodanthe propinqua</i>	
Asteraceae	<i>Rhodanthe stricta</i>	
Asteraceae	<i>Roebuckia ciliocarpa</i>	
Asteraceae	<i>Senecio glossanthus</i>	
Asteraceae	<i>Sonchus oleraceus</i>	*
Asteraceae	<i>Waitzia acuminata</i>	
Boraginaceae	<i>Trichodesma zeylanicum</i> var. <i>grandiflorum</i>	
Boryaceae	<i>Borya sphaerocephala</i>	
Brassicaceae	<i>Brassica tournefortii</i>	*
Brassicaceae	<i>Lepidium oxytrichum</i>	

Family	Taxon	Status
Brassicaceae	<i>Menkea australis</i>	
Brassicaceae	<i>Sisymbrium erysimoides</i>	*
Brassicaceae	<i>Stenopetalum anfractum</i>	
Campanulaceae	<i>Lobelia winfridae</i>	
Campanulaceae	<i>Wahlenbergia tumidifructa</i>	
Celastraceae	<i>Stackhousia ?monogyna</i>	
Centrolepidaceae	<i>Centrolepis eremica</i>	
Chenopodiaceae	<i>Atriplex codonocarpa</i>	
Chenopodiaceae	<i>Atriplex semilunaris</i>	
Chenopodiaceae	<i>Chenopodium gaudichaudianum</i>	
Chenopodiaceae	<i>Dysphania melanocarpa</i> forma <i>melanocarpa</i>	
Chenopodiaceae	<i>Enchylaena tomentosa</i>	
Chenopodiaceae	<i>Maireana carnosa</i>	
Chenopodiaceae	<i>Maireana planifolia</i>	
Chenopodiaceae	<i>Maireana pyramidata</i>	
Chenopodiaceae	<i>Maireana tomentosa</i>	
Chenopodiaceae	<i>Maireana triptera</i>	
Chenopodiaceae	<i>Rhagodia drummondii</i>	
Chenopodiaceae	<i>Rhagodia eremaea</i>	
Chenopodiaceae	<i>Salsola australis</i>	
Chenopodiaceae	<i>Sclerolaena cuneata</i>	
Chenopodiaceae	<i>Sclerolaena densiflora</i>	
Chenopodiaceae	<i>Sclerolaena diacantha</i>	
Chenopodiaceae	<i>Sclerolaena eriacantha</i>	
Chenopodiaceae	<i>Sclerolaena fusiformis</i>	
Chenopodiaceae	<i>Sclerolaena planifolia</i>	
Colchicaceae	<i>Wurmbea densiflora</i>	
Colchicaceae	<i>Wurmbea</i> sp. Paynes Find (C.J. French 1237)	
Convolvulaceae	<i>Convolvulus remotus</i>	
Convolvulaceae	<i>Cuscuta epithymum</i>	*
Convolvulaceae	<i>Duperreya sericea</i>	
Convolvulaceae	<i>Rhyncharrhena linearis</i>	
Crassulaceae	<i>Crassula colorata</i> var. <i>acuminata</i>	
Cyperaceae	<i>Cyperus ?alterniflorus</i>	
Cyperaceae	<i>Lepidosperma</i> sp.	
Droseraceae	<i>Drosera andersoniana</i>	
Euphorbiaceae	<i>Euphorbia boophthona</i>	
Euphorbiaceae	<i>Euphorbia drummondii</i>	
Euphorbiaceae	<i>Euphorbia tannensis</i> subsp. <i>eremophila</i>	
Fabaceae	<i>Acacia aneura</i>	
Fabaceae	<i>Acacia aptaneura</i>	
Fabaceae	<i>Acacia burkittii</i>	
Fabaceae	<i>Acacia caesaneura</i>	
Fabaceae	<i>Acacia caesaneura</i> (narrow phyllode variant)	
Fabaceae	<i>Acacia caesaneura</i> (short phyllode variant)	
Fabaceae	<i>Acacia coolgardiensis</i>	

Family	Taxon	Status
Fabaceae	<i>Acacia craspedocarpa</i>	
Fabaceae	<i>Acacia craspedocarpa</i> (hybrid)	
Fabaceae	<i>Acacia eremaea</i>	
Fabaceae	<i>Acacia exocarpoides</i>	
Fabaceae	<i>Acacia fuscaneura</i>	
Fabaceae	<i>Acacia grasbyi</i>	
Fabaceae	<i>Acacia incognita</i>	
Fabaceae	<i>Acacia incurvaneura</i>	
Fabaceae	<i>Acacia multispicata</i>	
Fabaceae	<i>Acacia pteraneura</i>	
Fabaceae	<i>Acacia ramulosa</i> (hybrid)	
Fabaceae	<i>Acacia ramulosa</i> var. <i>linophylla</i>	
Fabaceae	<i>Acacia ramulosa</i> var. <i>ramulosa</i>	
Fabaceae	<i>Acacia restiacea</i>	
Fabaceae	<i>Acacia rhodophloia</i>	
Fabaceae	<i>Acacia saligna</i> subsp. <i>lindleyi</i>	
Fabaceae	<i>Acacia scleroclada</i>	
Fabaceae	<i>Acacia sclerosperma</i> subsp. <i>sclerosperma</i>	
Fabaceae	<i>Acacia speckii</i>	P4
Fabaceae	<i>Acacia subsessilis</i>	P3
Fabaceae	<i>Acacia tetragonophylla</i>	
Fabaceae	<i>Acacia umbraculiformis</i>	
Fabaceae	<i>Acacia victoriae</i>	
Fabaceae	<i>Glycine canescens</i>	
Fabaceae	<i>Indigofera australis</i>	
Fabaceae	<i>Leptosema aphyllum</i>	
Fabaceae	<i>Mirbelia ramulosa</i>	
Fabaceae	<i>Senna artemisioides</i> subsp. <i>filifolia</i>	
Fabaceae	<i>Senna artemisioides</i> subsp. <i>helmsii</i>	
Fabaceae	<i>Senna artemisioides</i> subsp. <i>x artemisioides</i>	
Fabaceae	<i>Senna artemisioides</i> subsp. <i>x sturtii</i>	
Fabaceae	<i>Senna charlesiana</i>	
Fabaceae	<i>Senna glaucifolia</i>	
Fabaceae	<i>Senna</i> sp. Austin (A. Strid 20210)	
Fabaceae	<i>Senna</i> sp. Meekatharra (E. Bailey 1-26)	
Fabaceae	<i>Swainsona affinis</i>	
Fabaceae	<i>Swainsona paucifoliolata</i>	
Frankeniaceae	<i>Frankenia setosa</i>	
Geraniaceae	<i>Erodium cygnorum</i>	
Goodeniaceae	<i>Goodenia ?pinnatifida</i>	
Goodeniaceae	<i>Goodenia berardiana</i>	
Goodeniaceae	<i>Goodenia havilandii</i>	
Goodeniaceae	<i>Goodenia occidentalis</i>	
Goodeniaceae	<i>Scaevola spinescens</i>	
Goodeniaceae	<i>Velleia hispida</i>	
Goodeniaceae	<i>Velleia rosea</i>	

Family	Taxon	Status
Haloragaceae	<i>Haloragis ?trigonocarpa</i>	
Hemerocallidaceae	<i>Caesia</i> sp.	
Hemerocallidaceae	<i>Dianella revoluta</i> var. <i>divaricata</i>	
Lamiaceae	<i>Hemigenia tomentosa</i>	
Lamiaceae	<i>Prostanthera campbellii</i>	
Lamiaceae	<i>Teucrium teucriiflorum</i>	
Lamiaceae	<i>Hemigenia tomentosa</i>	
Loranthaceae	<i>Amyema nestor</i>	
Loranthaceae	<i>Lysiana casuarinae</i>	
Malvaceae	<i>Abutilon cryptopetalum</i>	
Malvaceae	<i>Abutilon oxycarpum</i>	
Malvaceae	<i>Abutilon</i> sp.	
Malvaceae	<i>Brachychiton gregorii</i>	
Malvaceae	<i>Hibiscus</i> sp. Gardneri (A.L. Payne PRP 1435)	
Malvaceae	<i>Sida ?fibulifera</i>	
Malvaceae	<i>Sida calyxhymania</i>	
Malvaceae	<i>Sida ectogama</i>	
Malvaceae	<i>Sida</i> sp. dark green fruits (S. van leeuwen 2260)	
Malvaceae	<i>Sida</i> sp. Golden calyces glabrous (H.N. Foote 32)	
Montiaceae	<i>Calandrinia creethiae</i>	
Montiaceae	<i>Calandrinia eremaea</i> (dull-seeded variant)	
Montiaceae	<i>Calandrinia granulifera</i>	
Montiaceae	<i>Calandrinia ptychosperma</i>	
Montiaceae	<i>Calandrinia remota</i>	
Montiaceae	<i>Calandrinia</i> sp. Bungalbin (G.J. Keighery & N. Gibson 1656)	
Myrtaceae	<i>Aluta aspera</i> subsp. <i>hesperia</i>	
Myrtaceae	<i>Callistemon phoeniceus</i>	
Myrtaceae	<i>Eucalyptus loxophleba</i> subsp. <i>supralaevis</i>	
Myrtaceae	<i>Micromyrtus sulphurea</i>	
Myrtaceae	<i>Stachystemon intricatus</i>	
Myrtaceae	<i>Thryptomene costata</i>	
Myrtaceae	<i>Thryptomene decussata</i>	
Phyllanthaceae	<i>Phyllanthus erwinii</i>	
Pittosporaceae	<i>Pittosporum angustifolium</i>	
Plantaginaceae	<i>Stemodia viscosa</i>	
Poaceae	<i>Aristida contorta</i>	
Poaceae	<i>Austrostipa elegantissima</i>	
Poaceae	<i>Cymbopogon ambiguus</i>	
Poaceae	<i>Enneapogon caerulescens</i>	
Poaceae	<i>Eragrostis dielsii</i>	
Poaceae	<i>Monachather paradoxus</i>	
Poaceae	<i>Paspalidium basicladum</i>	
Poaceae	<i>Pentameris airoides</i>	*
Poaceae	<i>Poaceae</i> sp.	
Poaceae	<i>Rostraria pumila</i>	*

Family	Taxon	Status
Poaceae	<i>Thyridolepis ?mitchelliana</i>	
Poaceae	<i>Tripogonella loliiformis</i>	
Polygalaceae	<i>Comesperma integerrimum</i>	
Polygonaceae	<i>Muehlenbeckia adpressa</i>	
Portulacaceae	<i>Portulaca oleracea</i>	
Primulaceae	<i>Lysimachia arvensis</i>	*
Proteaceae	<i>Grevillea deflexa</i>	
Proteaceae	<i>Grevillea extorris</i>	
Proteaceae	<i>Grevillea hakeoides</i> subsp. <i>stenophylla</i>	
Proteaceae	<i>Grevillea obliquistigma</i> subsp. <i>obliquistigma</i>	
Proteaceae	<i>Hakea recurva</i> subsp. <i>arida</i>	
Proteaceae	<i>Hakea recurva</i> subsp. <i>recurva</i>	
Pteridaceae	<i>Cheilanthes ?adiantoides</i>	
Pteridaceae	<i>Cheilanthes sieberi</i> subsp. <i>sieberi</i>	
Rubiaceae	<i>Psydrax suaveolens</i>	
Rutaceae	<i>Philotheca brucei</i> subsp. <i>brucei</i>	
Santalaceae	<i>Exocarpos aphyllus</i>	
Santalaceae	<i>Santalum lanceolatum</i>	
Sapindaceae	<i>Alectryon oleifolius</i> subsp. <i>oleifolius</i>	
Sapindaceae	<i>Dodonaea amplisemina</i>	P4
Sapindaceae	<i>Dodonaea inaequifolia</i>	
Sapindaceae	<i>Dodonaea petiolaris</i>	
Sapindaceae	<i>Dodonaea rigida</i>	
Sapindaceae	<i>Dodonaea viscosa</i> subsp. <i>angustissima</i>	
Sapindaceae	<i>Dodonaea viscosa</i> subsp. <i>spatulata</i>	
Scrophulariaceae	<i>Eremophila ?glandulifera</i>	
Scrophulariaceae	<i>Eremophila clarkei</i>	
Scrophulariaceae	<i>Eremophila compacta</i> subsp. <i>compacta</i>	
Scrophulariaceae	<i>Eremophila eriocalyx</i>	
Scrophulariaceae	<i>Eremophila exilifolia</i>	
Scrophulariaceae	<i>Eremophila forrestii</i> subsp. <i>forrestii</i>	
Scrophulariaceae	<i>Eremophila galeata</i>	
Scrophulariaceae	<i>Eremophila georgei</i>	
Scrophulariaceae	<i>Eremophila granitica</i>	
Scrophulariaceae	<i>Eremophila lachnocalyx</i>	
Scrophulariaceae	<i>Eremophila latrobei</i> subsp. <i>latrobei</i>	
Scrophulariaceae	<i>Eremophila latrobei</i> subsp. <i>warty leaves</i> (M. Officer 230)	
Scrophulariaceae	<i>Eremophila longifolia</i>	
Scrophulariaceae	<i>Eremophila oldfieldii</i> subsp. <i>oldfieldii</i>	
Scrophulariaceae	<i>Eremophila platycalyx</i> subsp. <i>platycalyx</i>	
Scrophulariaceae	<i>Eremophila punicea</i>	
Scrophulariaceae	<i>Eremophila serrulata</i>	
Scrophulariaceae	<i>Zaluzianskya divaricata</i>	*
Solanaceae	<i>Nicotiana rotundifolia</i>	
Solanaceae	<i>Solanum cleistogamum</i>	

Family	Taxon	Status
Solanaceae	<i>Solanum lasiophyllum</i>	
Solanaceae	<i>Solanum nummularia</i>	
Solanaceae	<i>Solanum orbicular</i>	
Solanaceae	<i>Solanum</i> sp.	
Surianaceae	<i>Stylobasium australe</i>	
Urticaceae	<i>Parietaria cardiostegia</i>	
Zygophyllaceae	<i>Zygophyllum iodocarpum</i>	

* = Introduced taxon, P3 = Priority 3, P4 = Priority 4.

Taxon / Vegetation Type	AEgRc	AtEgCd	ArrTdHc	APoEc	AeFsEd	AtSePd	AbCaPd	AuEeBs	AiMsSa
Abutilon cryptopetalum				x			x	x	
Abutilon oxycarpum				x					
Abutilon sp.				x	x	x	x	x	
Acacia aneura				x					
Acacia aptaneura		x		x			x		
Acacia burkittii	x	x		x		x	x	x	
Acacia caesaneura				x		x			
Acacia caesaneura (narrow phyllode variant)	x		x	x					
Acacia caesaneura (short phyllode variant)						x			
Acacia coolgardiensis		x							
Acacia craspedocarpa			x	x		x			
Acacia craspedocarpa (hybrid)	x			x		x	x		
Acacia eremaea		x		x	x		x		
Acacia exocarpoides								x	
Acacia fuscaneura	x	x		x		x	x		
Acacia grasbyi	x	x	x	x		x	x	x	
Acacia incognita							x		x
Acacia incurvaneura	x	x	x	x			x		
Acacia multispicata				x					
Acacia pteraneura	x	x		x	x			x	
Acacia ramulosa (hybrid)				x					
Acacia ramulosa var. linophylla				x					
Acacia ramulosa var. ramulosa	x	x	x	x		x		x	
Acacia restiacea			x					x	
Acacia rhodophloia								x	
Acacia saligna subsp. lindleyi							x		
Acacia scleroclada								x	
Acacia sclerosperma subsp. sclerosperma				x	x				
Acacia speckii	x	x		x				x	
Acacia subsessilis	x	x	x						
Acacia tetragonophylla	x	x	x	x	x	x	x	x	
Acacia umbraculiformis		x	x	x				x	x
Acacia victoriae				x					
Actinobole uliginosum					x				
Alectryon oleifolius subsp. oleifolius				x					
Aluta aspera subsp. hesperia			x						
Amyema nestor							x		
Aristida contorta		x		x	x			x	
Asteraceae sp.								x	
Atriplex codonocarpa					x				
Atriplex semilunaris					x				
Austrostipa elegantissima				x	x	x		x	
Borya sphaerocephala								x	
Brachychiton gregorii				x				x	
Brassica tournefortii							x		
Caesia sp.							x		
Calandrinia creethiae				x			x		
Calandrinia eremaea (dull-seeded variant)		x	x	x	x	x	x	x	x
Calandrinia granulifera				x					
Calandrinia Ptychosperma					x			x	
Calandrinia remota				x					
Calandrinia sp. Bungalbin (G.J. Keighery & N. Gibson 1656)				x					
Callistemon phoeniceus							x		
Calotis hispidula	x								
Calotis multicaulis		x		x	x		x	x	
Centrolepis eremica						x			
Cephalopterum drummondii	x	x	x	x	x	x	x	x	x
Cheilanthes ?adiantoides				x			x		
Cheilanthes sieberi subsp. sieberi		x	x	x	x	x	x	x	x
Chenopodium gaudichaudianum							x		
Chthonocephalus pseudevax	x	x	x	x	x			x	x
Comesperma integerrimum				x		x			
Convolvulus remotus							x		
Crassula colorata var. acuminata				x	x	x		x	
Cuscuta epithymum		x	x	x	x	x	x	x	
Cymbopogon ambiguus					x	x	x	x	
Cynanchum viminalis subsp. australe		x							
Cyperus ?alterniflorus						x	x		

Dianella revoluta var. divaricata				x		x			
Dielitzia tysonii	x	x	x	x				x	
Dodonaea amplisemma			x						
Dodonaea inaequifolia						x	x		
Dodonaea petiolaris		x							
Dodonaea rigida			x						
Dodonaea viscosa subsp. angustissima			x					x	
Dodonaea viscosa subsp. spatulata						x			
Drosera andersoniana		x		x				x	
Drummondita fulva								x	
Duperreya sericea						x	x		
Dysphania melanocarpa forma melanocarpa					x	x			
Enchylaena tomentosa				x			x		
Enneapogon caerulescens							x		
Eragrostis dielsii					x				
Eremophila ?glandulifera		x							
Eremophila clarkei			x	x		x	x		
Eremophila compacta subsp. compacta				x				x	
Eremophila eriocalyx			x	x					
Eremophila exilifolia				x			x	x	
Eremophila forrestii subsp. forrestii	x	x	x	x		x	x	x	
Eremophila galeata	x	x	x	x	x	x	x		
Eremophila georgei				x					
Eremophila granitica	x			x					
Eremophila lachnocalyx				x					
Eremophila latrobei subsp. latrobei	x	x	x			x	x	x	
Eremophila latrobei subsp. warty leaves (M. Officer 230)			x						x
Eremophila longifolia	x	x				x			
Eremophila oldfieldii subsp. oldfieldii				x		x			
Eremophila platycalyx subsp. platycalyx		x						x	
Eremophila punicea	x			x				x	
Eremophila serrulata						x	x	x	
Erodium cygnorum	x	x	x	x	x	x	x	x	x
Eucalyptus loxophleba subsp. supralaevis							x		
Euphorbia boophthona			x				x		
Euphorbia drummondii					x	x	x	x	
Euphorbia tannensis subsp. eremophila				x		x	x	x	
Exocarpos aphyllus							x		
Frankenia setosa				x	x				
Glycine canescens						x	x		
Gnephosis brevifolia		x		x	x				x
Goodenia ?pinnatifida				x					x
Goodenia berardiana						x	x		
Goodenia havilandii				x					
Goodenia occidentalis	x		x	x			x		
Grevillea deflexa				x					
Grevillea extorris				x				x	
Grevillea hakeoides subsp. stenophylla							x		
Grevillea obliquistigma subsp. obliquistigma			x	x					
Hakea recurva subsp. arida				x	x	x	x	x	
Hakea recurva subsp. recurva			x	x	x	x	x	x	
Haloragis ?trigonocarpa						x			
Helipterum craspedioides		x	x	x	x	x	x	x	x
Hemigenia tomentosa		x		x					
Hibiscus sp. Gardneri (A.L. Payne PRP 1435)								x	
Hyalosperma cotula				x					
Hyalosperma glutinosum subsp. glutinosum			x	x			x		
Hyalosperma glutinosum subsp. venustum				x				x	
Indigofera australis				x		x			
Lawrencella davenportii				x					
Lemooria burkittii	x	x		x	x			x	
Lepidium oxytrichum		x	x	x					
Lepidosperma sp.							x		
Leptosema aphyllum							x		
Lobelia winfridae	x								
Lysiana casuarinae				x				x	
Lysimachia arvensis						x	x		
Maireana carnosa	x	x		x	x			x	
Maireana planifolia		x		x	x		x	x	

Maireana pyramidata					x				
Maireana tomentosa	x				x				
Maireana triptera		x		x	x				
Marsdenia australis	x	x							
Menkea australis	x			x		x			
Mesembryanthemum nodiflorum		x							
Micromyrtus sulphurea									x
Mirbelia ramulosa				x			x		
Monachather paradoxus			x	x					
Muehlenbeckia adpressa							x		
Nicotiana rotundifolia					x		x	x	
Parietaria cardiostegia				x	x				
Paspalidium basicladum				x					
Pentameris airoides							x		
Philoteca brucei subsp. brucei			x	x		x			x
Phyllanthus erwinii						x			
Pittosporum angustifolium					x				
Pluchea dentex						x	x		
Poaceae sp.				x			x	x	
Podolepis capillaris	x	x		x	x	x	x	x	
Podolepis lessonii				x		x		x	
Pogonolepis muelleriana				x	x		x	x	
Portulaca oleracea				x	x	x	x		
Prostanthera campbellii			x				x		
Psydrax suaveolens		x							
Ptilotus aervoides		x		x	x	x	x		
Ptilotus chamaecladus					x	x	x		
Ptilotus divaricatus							x		
Ptilotus drummondii	x	x	x	x			x	x	x
Ptilotus helipteroides	x	x	x	x		x		x	
Ptilotus nobilis		x		x		x			
Ptilotus obovatus	x	x	x	x	x	x	x	x	x
Ptilotus polystachyus						x			
Rhagodia drummondii				x			x		
Rhagodia eremaea				x	x	x			
Rhodanthe chlorocephala subsp. splendida	x	x		x	x		x	x	
Rhodanthe citrina				x		x			
Rhodanthe propinqua				x			x	x	
Rhodanthe stricta							x		
Rhyncharhena linearis				x		x			
Roebuckiella ciliocarpa	x	x	x	x	x	x	x	x	x
Rostraria pumila					x				
Salsola australis	x								
Santalum lanceolatum				x			x	x	
Scaevola spinescens				x		x	x		
Sclerolaena cuneata		x		x	x				
Sclerolaena densiflora	x	x	x	x	x			x	
Sclerolaena diacantha				x					
Sclerolaena eriacantha	x				x				
Sclerolaena fusiformis				x					
Sclerolaena planifolia				x					
Senecio glossanthus		x			x	x			
Senna artemisioides subsp. filifolia				x		x	x		
Senna artemisioides subsp. helmsii			x				x	x	
Senna artemisioides subsp. x artemisioides						x			
Senna artemisioides subsp. x sturtii						x			
Senna charlesiana			x	x		x	x	x	
Senna glaucifolia				x					
Senna sp. Austin (A. Strid 20210)	x			x					
Senna sp. Meekatharra (E. Bailey 1-26)	x		x						
Sida ?fibulifera					x				
Sida calyxhymania				x		x	x	x	
Sida ectogama	x	x	x	x	x	x	x		
Sida sp. dark green fruits (S. van leeuwen 2260)	x	x	x	x	x	x		x	x
Sida sp. Golden calyces glabrous (H.N. Foote 32)			x	x					
Sisymbrium erysimoides							x		
Solanum cleistogamum							x		x
Solanum lasiophyllum		x	x	x	x	x	x	x	x
Solanum nummularium	x								

Solanum orbicular		x							
Solanum sp.				x		x			
Sonchus oleraceus		x							
Stachystemon intricatus				x					
Stackhousia ?monogyna								x	
Stemodia viscosa							x		
Stenopetalum anfractum	x	x	x	x		x		x	x
Stylobasium australe								x	
Swainsona affinis						x	x		
Swainsona paucifoliolata						x		x	
Tetragonia cristata				x	x				
Teucrium teucriiflorum	x		x	x					
Thryptomene costata			x						
Thryptomene decussata			x						
Thyridolepis ?mitchelliana				x				x	x
Thysanotus manglesianus				x			x		
Trachymene cyanopetala			x	x			x	x	
Trichodesma zeylanicum var. grandiflorum							x		
Tripogonella loliiformis				x	x	x		x	
Velleia hispida		x	x	x		x		x	x
Velleia rosea				x				x	
Wahlenbergia tumidifructa				x			x		
Waitzia acuminata			x	x					
Wurmbea densiflora	x	x	x	x		x	x	x	
Wurmbea sp. Paynes Find (C.J. French 1237)			x	x				x	
Zaluzianskya divaricata						x			
Zygophyllum iodocarpum	x								

Site ID:	Q01	Project:	6137117
Type:	Quadrat	Size:	20 x 20 m
Date:	7/08/2018	Described by:	GHD
Co-ordinates:	MGA 50J	482403.30 mE	6873759.05 mN
Landform and slope:	BIF lower slope, gentle		
Drainage:	Good		
Geology & soil:	BIF, brown sand		
Vegetation type:	AtEgCd		
Vegetation condition:	Excellent		
Fire age & intensity:	Old (> 5 years), no damage		
Disturbances:	Grazing		
Surface component:			
Substrate:	Cobbly/Cobbles (6-20 cm) <2 %		
Leaf litter:	Negligible		
Wood litter:	Sparse		

No photograph – SD memory card error.

Species List

Family	Taxon	Status	Stratum	Cover (%)	Height (m)
Fabaceae	<i>Acacia burkittii</i>		M1	2-10%	2-2.2
Fabaceae	<i>Acacia umbraculiformis</i>		M1	<2% T	2
Fabaceae	<i>Acacia tetragonophylla</i>		M2	<2% T	1.5
Solanaceae	<i>Solanum lasiophyllum</i>		G1	<2% N	0.3
Amaranthaceae	<i>Ptilotus obovatus</i>		G1	<2% N	0.3
Scrophulariaceae	<i>Eremophila galeata</i>		M2	2-10%	1.5
Solanaceae	<i>Solanum orbicular</i>		G1	<2% T	0.3
Chenopodiaceae	<i>Maireana planifolia</i>		G2	<2% T	0.1
Asteraceae	<i>Cephalopterum drummondii</i>		G2	<2% N	0.15
Geraniaceae	<i>Erodium cygnorum</i>		G2	<2% N	0.05
Brassicaceae	<i>Stenopetalum anfractum</i>		G2	<2% T	0.05
Amaranthaceae	<i>Ptilotus helipteroides</i>		G2	<2% N	0.05
Asteraceae	<i>Roebuckiella ciliocarpa</i>		G2	<2% N	0.05
Asteraceae	<i>Chthonocephalus pseudevax</i>		G2	<2% N	prostrate
Asteraceae	<i>Helipterum craspedioides</i>		G2	<2% N	0.05
Goodeniaceae	<i>Velleia hispida</i>		G2	<2% N	0.01
Asteraceae	<i>Podolepis capillaris</i>		G2	<2% N	0.1
Colchicaceae	<i>Wurmbea densiflora</i>		G2	<2% N	0.1
Montiaceae	<i>Calandrinia eremaea</i> (dull-seeded variant)		G2	<2% N	0.05
Amaranthaceae	<i>Ptilotus aevroides</i>		G2	<2% T	0.05
Asteraceae	<i>Lemooria burkittii</i>		G2	<2% N	0.01
Asteraceae	<i>Dielitzia tysonii</i>		G2	<2% N	0.01
Convolvulaceae	<i>Cuscuta epithymum</i>	*	G2	<2% T	prostrate
Chenopodiaceae	<i>Sclerolaena densiflora</i>		G2	<2% T	0.1
Poaceae	<i>Aristida contorta</i>		G2	<2% T	0.05
Droseraceae	<i>Drosera andersoniana</i>		G2	<2% T	prostrate

Family	Taxon	Status	Stratum	Cover (%)	Height (m)
Chenopodiaceae	<i>Maireana carosa</i>		G2	<2% T	0.1
Malvaceae	<i>Sida</i> sp. dark green fruits (S. Van Leeuwen 2260)		G2	<2% T	0.1

Site ID:	Q02	Project:	6137117
Type:	Quadrat	Size:	20 x 20 m
Date:	7/08/2018	Described by:	GHD
Co-ordinates:	MGA 50J	482637.84 mE	6875407.92 mN
Landform and slope:	Floodplain, negligible		
Drainage:	Good		
Geology & soil:	Orange, loam		
Vegetation type:	APoEc		
Vegetation condition:	Excellent		
Fire age & intensity:	Old (> 5 years), no damage		
Disturbances:	Grazing		
Surface component:			
Substrate:	Loose soil 31-70%		
Leaf litter:	Negligible		
Wood litter:	Sparse		

No photograph – SD memory card error.

Species List

Family	Taxon	Status	Stratum	Cover (%)	Height (m)
Asteraceae	<i>Cephalopterum drummondii</i>		G2	<2% N	0.1
Lamiaceae	<i>Teucrium teucriiflora</i>		M2	<2% T	1
Fabaceae	<i>Acacia burkittii</i>		M1	30-10%	2
Amaranthaceae	<i>Ptilotus obovatus</i>		G1	<2% N	0.4
Geraniaceae	<i>Erodium cygnorum</i>		G2	<2% N	0.05
Asteraceae	<i>Podolepis capillaris</i>		G2	<2% N	0.1
Solanaceae	<i>Solanum lasiophyllum</i>		G1	<2% N	0.4
Proteaceae	<i>Grevillea deflexa</i>		G1	<2% T	0.3
Proteaceae	<i>Hakea recurva</i> subsp. <i>recurva</i>		M1	2-10%	2-2.25
Asteraceae	<i>Chthonocephalus pseudevax</i>		G2	<2% N	prostrate
Asteraceae	<i>Helipterum craspedioides</i>		G2	<2% N	0.1
Scrophulariaceae	<i>Eremophila granitica</i>		M2	<2% T	1.2
Chenopodiaceae	<i>Sclerolaena densiflora</i>		G2	<2% T	0.2
Fabaceae	<i>Acacia tetragonophylla</i>		G1	<2% N	0.9
Chenopodiaceae	<i>Maireana planifolia</i>		G1	<2% N	0.3
Asteraceae	<i>Roebuckiella ciliocarpa</i>		G2	<2% N	0.05
Fabaceae	<i>Acacia ramulosa</i> var. <i>ramulosa</i>		M1	2-10%	2-3
Asteraceae	<i>Hyalosperma glutinosum</i> subsp. <i>glutinosum</i>		G2	<2% T	0.05
Fabaceae	<i>Acacia caesaneura</i> (narrow phyllode variant)		G1	<2% T	1
Amaranthaceae	<i>Ptilotus helipteroides</i>		G2	<2% T	0.1
Asteraceae	<i>Dielitzia tysonii</i>		G2	<2% N	0.05

Site ID:	Q03	Project:	6137117
Type:	Quadrat	Size:	20 x 20 m
Date:	7/08/2018	Described by:	GHD
Co-ordinates:	MGA 50J	480643.51 mE	6876272.53 mN
Landform and slope:	BIF, lower slope, gentle		
Drainage:	Good		
Geology & soil:	Brown loam		
Vegetation type:	AtEgCd		
Vegetation condition:	Excellent		
Fire age & intensity:	Old (> 5 years), no damage		
Disturbances:	Grazing		
Surface component:			
Substrate:	Coarse Gravel/Pebbles (2-6 cm) 2-10%		
Leaf litter:	Negligible		
Wood litter:	Sparse		

No photograph – SD memory card error.

Species List

Family	Taxon	Status	Stratum	Cover (%)	Height (m)
Fabaceae	<i>Acacia tetragonophylla</i>		M2	<2% T	1.4
Asteraceae	<i>Cephalipterum drummondii</i>		G2	<2% N	0.1
Asteraceae	<i>Chthonocephalus pseudevax</i>		G2	<2% N	prostrate
Asteraceae	<i>Dielitzia tysonii</i>		G2	<2% N	0.01
Geraniaceae	<i>Erodium cygnorum</i>		G2	<2% N	0.05
Asteraceae	<i>Roebuckiella ciliocarpa</i>		G2	<2% N	0.05
Amaranthaceae	<i>Ptilotus obovatus</i>		G2	<2% T	0.2
Solanaceae	<i>Solanum lasiophyllum</i>		G2	<2% T	0.2
Chenopodiaceae	<i>Maireana carmosa</i>		G2	<2% T	prostrate
Scrophulariaceae	<i>Eremophila galeata</i>		M2	2-10%	1.3
Asteraceae	<i>Helipterum craspedioides</i>		G2	<2% N	0.05
Brassicaceae	<i>Stenopetalum anfractum</i>		G2	<2% N	0.5
Amaranthaceae	<i>Ptilotus drummondii</i>		G2	<2% T	0.1
Fabaceae	<i>Acacia fuscaneura</i>		M1	<2% T	1.8
Scrophulariaceae	<i>Eremophila platycalyx</i> subsp. <i>platycalyx</i>		M2	<2% T	1.1
Scrophulariaceae	<i>Eremophila ?glandulifera</i>		G1	<2% T	0.5

Site ID:	Q04	Project:	6137117
Type:	Quadrat	Size:	20 x 20 m
Date:	7/08/2018	Described by:	GHD
Co-ordinates:	MGA 50J	479124.92 mE	6877614.95 mN
Landform and slope:	BIF, hill crest, gentle		
Drainage:	Good		
Geology & soil:	Orange loam		
Vegetation type:	ArrTdHc		
Vegetation condition:	Excellent		
Fire age & intensity:	Old (> 5 years), minor impact		
Disturbances:	Grazing		
Surface component:			
Substrate:	Boulders (>60 cm) 2-10%		
Leaf litter:	Negligible		
Wood litter:	Negligible		

No photograph – SD memory card error.

Species List

Family	Taxon	Status	Stratum	Cover (%)	Height (m)
Myrtaceae	<i>Thryptomene decussata</i>		M2	30-10%	1-1.8
Myrtaceae	<i>Thryptomene decussata</i>		G1	2-10%	0.5
Geraniaceae	<i>Erodium cygnorum</i>		G2	<2% N	0.01
Goodeniaceae	<i>Velleia hispida</i>		G2	<2% N	0.01
Asteraceae	<i>Helipterum craspedioides</i>		G2	<2% N	0.15
Malvaceae	<i>Sida</i> sp. Golden calyces glabrous (H.N. Foote 32)		G2	<2% N	0.2
Convolvulaceae	<i>Cuscuta epithymum</i>	*	G2	<2% T	prostrate
Solanaceae	<i>Solanum lasiophyllum</i>		G2	<2% T	0.2
Fabaceae	<i>Acacia ramulosa</i> var. <i>ramulosa</i>		M1	2-10%	2
Fabaceae	<i>Acacia incurvaneura</i>		M1	30-10%	2-2.5
Asteraceae	<i>Roebuckiella ciliocarpa</i>		G2	<2% N	0.05
Scrophulariaceae	<i>Eremophila galeata</i>		G1	<2% T	0.3
Scrophulariaceae	<i>Eremophila clarkei</i>		G1	<2% T	0.4
Pteridaceae	<i>Cheilanthes sieberi</i> subsp. <i>sieberi</i>		G2	<2% T	0.02
Scrophulariaceae	<i>Eremophila forrestii</i> subsp. <i>forrestii</i>		G2	<2% T	0.5
Poaceae	<i>Monachather paradoxus</i>		G2	<2% T	0.2
Malvaceae	<i>Sida</i> sp. dark green fruits (S. Van Leeuwen 2260)		G2	<2% T	0.1
Colchicaceae	<i>Wurmbea</i> sp. Payne's Find (C.J. French 1237)		G2	<2% T	0.05
Scrophulariaceae	<i>Eremophila latrobei</i> subsp. <i>latrobei</i>		G1	<2% T	0.6
Colchicaceae	<i>Wurmbea densiflora</i>		G2	<2% T	0.1

Site ID:	Q05	Project:	6137117
Type:	Quadrat	Size:	20 x 20 m
Date:	7/08/2018	Described by:	GHD
Co-ordinates:	MGA 50J	479637.79 mE	6877655.86 mN
Landform and slope:	BIF, hill crest, gentle		
Drainage:	Good		
Geology & soil:	BIF, orange loam		
Vegetation type:	AtEgCd		
Vegetation condition:	Excellent		
Fire age & intensity:	Old (> 5 years), no damage		
Disturbances:	Grazing		
Surface component:			
Substrate:	Boulders (>60 cm) <2%		
Leaf litter:	Negligible		
Wood litter:	Negligible		

No photograph – SD memory card error.

Species List

Family	Taxon	Status	Stratum	Cover (%)	Height (m)
Asteraceae	<i>Cephalopterum drummondii</i>		G2	<2% N	0.1
Geraniaceae	<i>Erodium cygnorum</i>		G2	<2% N	0.05
Asteraceae	<i>Helipterum craspedioides</i>		G2	<2% N	0.05
Brassicaceae	<i>Lepidium oxytrichum</i>		G2	<2% N	0.05
Fabaceae	<i>Acacia incurvaneura</i>		M2	<2% T	1-1.8
Fabaceae	<i>Acacia aptaneura</i>		M2	2-10%	1.5-2
Amaranthaceae	<i>Ptilotus obovatus</i>		G1	<2% N	0.4
Solanaceae	<i>Solanum lasiophyllum</i>		G1	<2% N	0.3
Asteraceae	<i>Chthonocephalus pseudevax</i>		G2	<2% N	0.01
Asteraceae	<i>Lemooria burkittii</i>		G2	<2% N	0.01
Asteraceae	<i>Dielitzia tysonii</i>		G2	<2% N	0.01
Chenopodiaceae	<i>Sclerolaena densiflora</i>		G2	<2% N	0.1
Brassicaceae	<i>Stenopetalum anfractum</i>		G2	<2% T	0.1
Fabaceae	<i>Acacia umbraculiformis</i>		M2	<2% T	1.5-2
Chenopodiaceae	<i>Maireana planifolia</i>		G1	<2% T	0.5
Asteraceae	<i>Senecio glossanthus</i>		G2	<2% T	0.1
Amaranthaceae	<i>Ptilotus helipteroides</i>		G2	<2% T	0.1
Asteraceae	<i>Podolepis capillaris</i>		G2	<2% T	0.2
Convolvulaceae	<i>Cuscuta epithymum</i>	*	G2	<2% T	prostrate
Asteraceae	<i>Roebuckiella ciliocarpa</i>		G2	<2% T	0.1
Fabaceae	<i>Acacia pteraneura</i>		M1	<2% T	2-4
Fabaceae	<i>Acacia tetragonophylla</i>		M1	<2% T	1.5
Scrophulariaceae	<i>Eremophila galeata</i>		G1	<2% T	0.5

Site ID:	Q06	Project:	6137117
Type:	Quadrat	Size:	20 x 20 m
Date:	7/08/2018	Described by:	GHD
Co-ordinates:	MGA 50J	478030.97 mE	6878632.00 mN
Landform and slope:	BIF, lower-mid slope, gentle		
Drainage:	Good		
Geology & soil:	BIF, orange loam		
Vegetation type:	AEgRc		
Vegetation condition:	Excellent		
Fire age & intensity:	Old (> 5 years), no damage		
Disturbances:	Grazing		
Surface component:			
Substrate:	Stony/Stones 20-60cm <2%		
Leaf litter:	Negligible		
Wood litter:	Sparse		

No photograph – SD memory card error.

Species List

Family	Taxon	Status	Stratum	Cover (%)	Height (m)
Fabaceae	<i>Senna</i> sp. Meekatharra (E. Bailey 1-26)		G1	<2% N	0.1
Asteraceae	<i>Cephalopterum drummondii</i>		G2	<2% N	0.1
Asteraceae	<i>Roebuckiella ciliocarpa</i>		G2	<2% N	0.1
Brassicaceae	<i>Menkea australis</i>		G2	<2% N	prostrate
Asteraceae	<i>Dielitzia tysonii</i>		G2	<2% N	0.01
Chenopodiaceae	<i>Sclerolaena eriacantha</i>		G2	<2% N	0.1
Asteraceae	<i>Lemooria burkittii</i>		G2	<2% N	0.01
Geraniaceae	<i>Erodium cygnorum</i>		G2	<2% N	0.05
Fabaceae	<i>Senna</i> sp. Meekatharra (E. Bailey 1-26)		M2	<2% N	1-1.5
Fabaceae	<i>Acacia tetragonophylla</i>		M1	<2% N	2
Zygophyllaceae	<i>Zygophyllum iodocarpum</i>		G2	<2% N	prostrate
Fabaceae	<i>Acacia burkittii</i>		M2	2-10%	1.5-2
Amaranthaceae	<i>Ptilotus obovatus</i>		G1	<2% N	0.2
Scrophulariaceae	<i>Eremophila longifolia</i>		M2	2-10%	1.8
Fabaceae	<i>Senna</i> sp. Austin (A. Strid 20210)		G1	<2% T	0.8
Asteraceae	<i>Podolepis capillaris</i>		G2	<2% T	0.1
Chenopodiaceae	<i>Maireana camosa</i>		G2	<2% T	0.05
Asteraceae	<i>Calotis hispidula</i>		G2	<2% T	0.01

Site ID:	Q07	Project:	6137117
Type:	Quadrat	Size:	20 x 20 m
Date:	7/08/2018	Described by:	GHD
Co-ordinates:	MGA 50J	479538.41 mE	6879267.80 mN
Landform and slope:	Floodplain, negligible		
Drainage:	Good		
Geology & soil:	Orange loam		
Vegetation type:	APoEc		
Vegetation condition:	Excellent		
Fire age & intensity:	Old (> 5 years), no damage		
Disturbances:	Grazing		
Surface component:			
Substrate:	Loose soil 31-70%		
Leaf litter:	Negligible		
Wood litter:	Sparse		

No photograph – SD memory card error.

Species List

Family	Taxon	Status	Stratum	Cover (%)	Height (m)
Fabaceae	<i>Acacia tetragonophylla</i>		M1	30-10%	2-2.5
Proteaceae	<i>Hakea recurva</i> subsp. <i>recurva</i>		M1	<2% T	2-2.5
Amaranthaceae	<i>Ptilotus obovatus</i>		G1	<2% T	0.5
Fabaceae	<i>Acacia craspedocarpa</i>		M1	2-10%	2-2.5
Malvaceae	<i>Brachychiton gregorii</i>		M1	<2% T	3
Asteraceae	<i>Helipterum craspedioides</i>		G2	<2% N	0.1
Fabaceae	<i>Acacia grasbyi</i>		M1	<2% T	3-4
Portulacaceae	<i>Portulaca oleracea</i>		G2	<2% N	prostrate
Solanaceae	<i>Solanum lasiophyllum</i>		G1	<2% T	0.3
Scrophulariaceae	<i>Eremophila punicea</i>		G1	<2% T	0.5
Fabaceae	<i>Acacia craspedocarpa</i> (hybrid)		M2	<2% T	1.5
Scrophulariaceae	<i>Eremophila forrestii</i> subsp. <i>forrestii</i>		G1	<2% T	0.8
Proteaceae	<i>Grevillea deflexa</i>		G1	<2% T	0.4
Malvaceae	<i>Brachychiton gregorii</i>		U1	<2% T	4
Scrophulariaceae	<i>Eremophila granitica</i>		G1	<2% T	0.5
Poaceae	<i>Austrostipa elegantissima</i>		G1	<2% T	0.3
Fabaceae	<i>Mirbelia ramulosa</i>		G1	<2% T	0.45
Asteraceae	<i>Roebuckiella ciliocarpa</i>		G1	<2% N	0.2
Malvaceae	<i>Abutilon cryptopetalum</i>		G1	<2% T	0.4
Geraniaceae	<i>Erodium cygnorum</i>		G2	<2% T	0.05
Convolvulaceae	<i>Cuscuta epithymum</i>	*	G2	<2% T	prostrate
Lamiaceae	<i>Teucrium teucriiflorum</i>		G1	<2% T	0.7
Asteraceae	<i>Podolepis lessonii</i>		G2	<2% N	0.05
Asteraceae	<i>Rhodanthe propinqua</i>		G2	<2% N	0.06
Scrophulariaceae	<i>Eremophila ericalyx</i>		G1	<2% T	0.5

Family	Taxon	Status	Stratum	Cover (%)	Height (m)
Malvaceae	<i>Sida</i> sp. dark green fruits (S. Van Leeuwen 2260)		G2	<2% T	0.10
Asteraceae	<i>Cephalopterum drummondii</i>		G2	<2% T	0.18
Convolvulaceae	<i>Rhyncharrhena linearis</i>		M2	<2% T	creeper
Scrophulariaceae	<i>Eremophila forrestii</i> subsp. <i>forrestii</i>		G1	<2% T	0.8
Asteraceae	<i>Podolepis capillaris</i>		G2	<2% T	0.1

No photograph – SD memory card error.

Site ID:	Q08	Project:	6137117
Type:	Quadrat	Size:	20 x 20 m
Date:	8/08/2018	Described by:	GHD
Co-ordinates:	MGA 50J	481393.05 mE	6879374.39 mN
Landform and slope:	Plain, negligible		
Drainage:	Good		
Geology & soil:	Orange loam		
Vegetation type:	APoEc		
Vegetation condition:	Excellent		
Fire age & intensity:	Old (> 5 years), minor impact		
Disturbances:	Grazing		
Surface component:			
Substrate:	Loose soil >70%		
Leaf litter:	Negligible		
Wood litter:	Sparse		

No photograph – SD memory card error.

Species List

Family	Taxon	Status	Stratum	Cover (%)	Height (m)
Fabaceae	<i>Acacia burkittii</i>		M2	2-10%	1-2
Portulacaceae	<i>Portulaca oleracea</i>		G2	<2% N	prostrate
Asteraceae	<i>Helipterum craspedioides</i>		G2	<2% N	0.1
Asteraceae	<i>Chthonocephalus pseudevax</i>		G2	<2% N	prostrate
Geraniaceae	<i>Erodium cygnorum</i>		G2	<2% N	0.01
Asteraceae	<i>Cephalipterum drummondii</i>		G2	<2% N	0.1
Solanaceae	<i>Solanum lasiophyllum</i>		G1	2-10%	0.2
Amaranthaceae	<i>Ptilotus obovatus</i>		G1	<2% N	0.3
Colchicaceae	<i>Wurmbea</i> sp. Payne's Find (C.J. French 1237)		G2	<2% T	0.1
Asteraceae	<i>Dielitzia tysonii</i>		G2	<2% N	0.05
Poaceae	Poaceae sp.		G2	<2% T	0.05
Poaceae	<i>Paspalidium basicladum</i>		G2	<2% T	0.05
Scrophulariaceae	<i>Eremophila forrestii</i> subsp. <i>forrestii</i>		G1	2-10%	0.4
Proteaceae	<i>Hakea recurva</i> subsp. <i>recurva</i>		M1	<2% T	2
Fabaceae	<i>Acacia burkittii</i>		M1	2-10%	2+
Fabaceae	<i>Acacia tetragonophylla</i>		M2	2-10%	1.5-2
Malvaceae	<i>Sida</i> sp. dark green fruits (S. Van Leeuwen 2260)		G1	<2% N	0.3
Scrophulariaceae	<i>Eremophila ericalyx</i>		G1	<2% T	0.8
Convolvulaceae	<i>Rhyncharhena linearis</i>		M2	<2% T	creeper
Lamiaceae	<i>Teucrium teucriiflorum</i>		G1	<2% T	1
Asteraceae	<i>Roebuckiella cilicarpa</i>		G2	<2% N	0.1
Chenopodiaceae	<i>Maireana planifolia</i>		G2	<2% T	0.2
Scrophulariaceae	<i>Eremophila forrestii</i> subsp. <i>forrestii</i>		G1	<2% T	0.3

Family	Taxon	Status	Stratum	Cover (%)	Height (m)
Brassicaceae	<i>Menkea australis</i>		G2	<2% N	prostrate
Chenopodiaceae	<i>Maireana carnos</i>		G2	<2% T	0.05
Asteraceae	<i>Podolepis capillaris</i>		G2	<2% T	0.2
Fabaceae	<i>Acacia aneura</i>		M2	<2% T	1.2
Goodeniaceae	<i>Goodenia havilandii</i>		G2	<2% T	0.15
Asparagaceae	<i>Thysanotus manglesianus</i>		G1	<2% T	creeper
Malvaceae	<i>Abutilon</i> sp.		G2	<2% T	0.05
Amaranthaceae	<i>Ptilotus helipteroides</i>		G2	<2% T	0.05

Site ID:	Q09	Project:	6137117
Type:	Quadrat	Size:	20 x 20 m
Date:	8/08/2018	Described by:	GHD
Co-ordinates:	MGA 50J	483917.62 mE	6879094.80 mN
Landform and slope:	Plain, negligible		
Drainage:	Good		
Geology & soil:	Orange loam		
Vegetation type:	AeFsEd		
Vegetation condition:	Very Good		
Fire age & intensity:	Old (> 5 years), minor impact		
Disturbances:	Grazing and weeds		
Surface component:			
Substrate:	Loose soil 31-70%		
Leaf litter:	Negligible		
Wood litter:	Sparse		

No photograph – SD memory card error.

Species List

Family	Taxon	Status	Stratum	Cover (%)	Height (m)
Asteraceae	<i>Cephalopterum drummondii</i>		G2	<2% N	0.1
Asteraceae	<i>Helipterum craspedioides</i>		G2	<2% N	0.1
Asteraceae	<i>Chthonocephalus pseudevax</i>		G2	<2% N	prostrate
Asteraceae	<i>Actinobole uliginosum</i>		G2	<2% N	prostrate
Poaceae	<i>Aristida contorta</i>		G2	<2% N	prostrate
Solanaceae	<i>Solanum lasiophyllum</i>		G2	<2% T	0.15
Amaranthaceae	<i>Ptilotus obovatus</i>		G2	<2% T	0.2
Fabaceae	<i>Acacia eremaea</i>		M2	<2% T	2
Malvaceae	<i>Sida ?fibulifera</i>		G2	<2% T	prostrate
Chenopodiaceae	<i>Maireana tomentosa</i>		G1	2-10%	0.25
Chenopodiaceae	<i>Maireana pyramidata</i>		G1	2-10%	0.6
Frankeniaceae	<i>Frankenia setosa</i>		G2	<2% N	0.2
Poaceae	<i>Eragrostis dielsii</i>		G2	<2% T	prostrate
Euphorbiaceae	<i>Euphorbia drummondii</i>		G2	<2% T	prostrate
Malvaceae	<i>Sida</i> sp. dark green fruits (S. Van Leeuwen 2260)		G2	<2% T	0.3
Geraniaceae	<i>Erodium cygnorum</i>		G2	<2% N	0.02
Proteaceae	<i>Hakea recurva</i> subsp. <i>recurva</i>		M2	<2% T	2
Chenopodiaceae	<i>Maireana camosa</i>		G2	<2% T	prostrate
Poaceae	<i>Austrostipa elegantissima</i>		G1	<2% T	0.3
Asteraceae	<i>Podolepis capillaris</i>		G2	<2% T	0.1
Asteraceae	<i>Roebuckiella ciliocarpa</i>		G2	<2% T	0.05
Asteraceae	<i>Senecio glossanthus</i>		G2	<2% N	0.1
Portulacaceae	<i>Portulaca oleracea</i>		G2	<2% N	prostrate
Malvaceae	<i>Abutilon</i> sp.		G2	<2% T	0.1
Crassulaceae	<i>Crassula colorata</i> var. <i>acuminata</i>		G2	<2% N	0.05

Family	Taxon	Status	Stratum	Cover (%)	Height (m)
Convolvulaceae	<i>Cuscuta epithymum</i>	*	G2	<2% T	prostrate
Montiaceae	<i>Calandrinia eremaea</i> (dull-seeded variant)		G2	<2% N	prostrate
Asteraceae	<i>Calotis multicaulis</i>		G2	<2% N	prostrate
Chenopodiaceae	<i>Dysphania melanocarpa</i> forma <i>melanocarpa</i>		G2	<2% N	prostrate
Poaceae	<i>Rostraria pumila</i>	*	G2	<2% N	0.01
Asteraceae	<i>Lemooria burkittii</i>		G2	<2% N	prostrate
Urticaceae	<i>Parietaria cardiostegia</i>		G2	<2% N	0.05
Chenopodiaceae	<i>Rhagodia eremaea</i>		G1	<2% T	0.6

Site ID:	Q10	Project:	6137117
Type:	Quadrat	Size:	20 x 20 m
Date:	8/08/2018	Described by:	GHD
Co-ordinates:	MGA 50J	484626.48 mE	6880025.95 mN
Landform and slope:	Plain, negligible		
Drainage:	Good		
Geology & soil:	Orange loam		
Vegetation type:	AeFsEd		
Vegetation condition:	Very Good		
Fire age & intensity:	Old (> 5 years), minor impact		
Disturbances:	Grazing		
Surface component:			
Substrate:	Loose soil >70%		
Leaf litter:	Negligible		
Wood litter:	Negligible		

No photograph – SD memory card error.

Species List

Family	Taxon	Status	Stratum	Cover (%)	Height (m)
Fabaceae	<i>Acacia eremaea</i>		M1	2-10%	2-3
Solanaceae	<i>Solanum lasiophyllum</i>		G1	<2% N	0.8
Chenopodiaceae	<i>Maireana pyramidata</i>		G1	<2% N	0.7
Asteraceae	<i>Podolepis capillaris</i>		G2	<2% N	0.15
Asteraceae	<i>Helipterum craspedioides</i>		G2	<2% N	0.1
Poaceae	<i>Aristida contorta</i>		G2	<2% N	prostrate
Chenopodiaceae	<i>Sclerolaena densiflora</i>		G2	<2% N	0.1
Asteraceae	<i>Roebuckiella ciliocarpa</i>		G2	<2% T	0.2
Amaranthaceae	<i>Ptilotus obovatus</i>		G1	<2% N	0.5
Poaceae	<i>Trigonella loliiformis</i>		G2	<2% N	0.02
Amaranthaceae	<i>Ptilotus chamaecladus</i>		G2	<2% N	prostrate
Asteraceae	<i>Chthonocephalus pseudevax</i>		G2	<2% N	0.1
Chenopodiaceae	<i>Atriplex semilunaris</i>		G2	<2% T	prostrate
Asteraceae	<i>Chthonocephalus pseudevax</i>		G2	<2% N	prostrate
Montiaceae	<i>Calandrinia ptychosperma</i>		G2	<2% N	prostrate
Chenopodiaceae	<i>Maireana tomentosa</i>		G1	<2% N	0.25
Euphorbiaceae	<i>Euphorbia drummondii</i>		G2	<2% T	prostrate
Asteraceae	<i>Actinobole uliginosum</i>		G2	<2% T	prostrate
Crassulaceae	<i>Crassula colorata</i> var. <i>acuminata</i>		G2	<2% T	prostrate
Poaceae	<i>Eragrostis dielsii</i>		G2	<2% T	0.05
Fabaceae	<i>Swainsona affinis</i>		G2	<2% T	0.05

Site ID:	Q11	Project:	6137117
Type:	Quadrat	Size:	20 x 20 m
Date:	8/08/2018	Described by:	GHD
Co-ordinates:	MGA 50J	486480.14 mE	6880369.55 mN
Landform and slope:	Outcrop, gentle		
Drainage:	Good		
Geology & soil:	Laterite, orange loam		
Vegetation type:	AiMsSa		
Vegetation condition:	Excellent		
Fire age & intensity:	Old (> 5 years), minor impact		
Disturbances:	Grazing		
Surface component:			
Substrate:	Boulders (>60 cm) <2%		
Leaf litter:	Negligible		
Wood litter:	Sparse		

No photograph – SD memory card error.

Species List

Family	Taxon	Status	Stratum	Cover (%)	Height (m)
Asteraceae	<i>Cephalopterum drummondii</i>		G2	<2% T	0.1
Solanaceae	<i>Solanum lasiophyllum</i>		G1	<2% T	0.25
Montiaceae	<i>Calandrinia eremaea</i> (dull-seeded variant)		G2	<2% N	0.1
Goodeniaceae	<i>Goodenia ?pinnatifida</i>		G2	<2% N	0.1
Myrtaceae	<i>Micromyrtus sulphurea</i>		G1	<2% N	0.5
Brassicaceae	<i>Stenopetalum anfractum</i>		G2	<2% N	0.15
Rutaceae	<i>Philotheca brucei</i> subsp. <i>brucei</i>		M2	<2% T	1.2
Amaranthaceae	<i>Ptilotus obovatus</i>		G1	<2% N	0.4
Asteraceae	<i>Chthonocephalus pseudevax</i>		G2	<2% N	prostrate
Geraniaceae	<i>Erodium cygnorum</i>		G2	<2% T	0.1
Malvaceae	<i>Sida</i> sp. dark green fruits (S. Van Leeuwen 2260)		G2	<2% T	0.05
Asteraceae	<i>Roebuckiella ciliocarpa</i>		G2	<2% T	0.05
Solanaceae	<i>Solanum cleistogamum</i>		G2	<2% T	prostrate
Asteraceae	<i>Gnephosis brevifolia</i>		G2	<2% N	0.01
Poaceae	<i>Thyridolepis ?mitchelliana</i>		G2	<2% T	prostrate
Amaranthaceae	<i>Ptilotus drummondii</i>		G2	<2% T	0.2
Scrophulariaceae	<i>Eremophila latrobei</i> subsp. warty leaves (M. Officer 230)		G1	<2% T	0.8
Pteridaceae	<i>Cheilanthes sieberi</i> subsp. <i>sieberi</i>		G2	<2% T	0.01
Asteraceae	<i>Helipterum craspedioides</i>		G2	<2% T	0.1
Goodeniaceae	<i>Velleia hispida</i>		G2	<2% T	0.05
Fabaceae	<i>Acacia incognita</i>		G1	2-10%	0.1
Fabaceae	<i>Acacia incognita</i>		M2	<2% T	2

Site ID:	Q12	Project:	6137117
Type:	Quadrat	Size:	20 x 20 m
Date:	8/08/2018	Described by:	GHD
Co-ordinates:	MGA 50J	486211.20 mE	6881537.84 mN
Landform and slope:	Drainage line, gentle		
Drainage:	Seasonally wet		
Geology & soil:	Brown sand		
Vegetation type:	AbCaPd		
Vegetation condition:	Excellent		
Fire age & intensity:	Old (> 5 years), no damage		
Disturbances:	Grazing		
Surface component:			
Substrate:	Loose soil >70%		
Leaf litter:	Sparse		
Wood litter:	Sparse		

No photograph – SD memory card error.

Species List

Family	Taxon	Status	Stratum	Cover (%)	Height (m)
Fabaceae	<i>Acacia burkittii</i>		M1	2-10%	2.5
Loranthaceae	<i>Amyema nestor</i>		M1	<2% T	
Cyperaceae	<i>Cyperus ?alterniflorus</i>		G1	<2% N	0.4
Myrtaceae	<i>Callistemon phoeniceus</i>		M2	2-10%	2
Convolvulaceae	<i>Cuscuta epithymum</i>	*	G2	<2% T	creeper
Primulaceae	<i>Lysimachia arvensis</i>	*	G2	<2% N	0.15
Myrtaceae	<i>Eucalyptus loxophleba</i> subsp. <i>supralaevis</i>		G1	2-10%	3-4
Fabaceae	<i>Acacia tetragonophylla</i>		G1	<2% N	0.3
Asteraceae	<i>Rhodanthe chlorocephala</i> subsp. <i>splendida</i>		G2	<2% N	0.15
Fabaceae	<i>Glycine canescens</i>		G2	<2% T	creeper
Fabaceae	<i>Leptosema aphyllum</i>		G1	<2% T	0.6
Fabaceae	<i>Acacia saligna</i> subsp. <i>lindleyi</i>		M2	<2% T	1-2
Goodeniaceae	<i>Scaevola spinescens</i>		G1	<2% N	0.5
Cyperaceae	<i>Lepidosperma</i> sp.		G1	<2% N	1
Malvaceae	<i>Abutilon</i> sp.		G2	<2% T	0.1
Hemerocallidaceae	<i>Caesia</i> sp.		G1	<2% T	0.5
Santalaceae	<i>Exocarpos aphyllus</i>		G2	<2% T	2
Fabaceae	<i>Glycine canescens</i>		G2	<2% T	prostrate
Chenopodiaceae	<i>Chenopodium gaudichaudianum</i>		G1	<2% T	0.5
Fabaceae	<i>Senna charlesiana</i>		G1	<2% T	0.4
Convolvulaceae	<i>Convolvulus remotus</i>		G1	<2% T	creeper
Sapindaceae	<i>Dodonaea inaequifolia</i>		G1	<2% T	1
Asteraceae	<i>Rhodanthe stricta</i>		G2	<2% T	0.1
Amaranthaceae	<i>Ptilotus obovatus</i>		G1	<2% T	0.3
Asteraceae	<i>Calotis multicaulis</i>		G2	<2% N	0.1
Montiaceae	<i>Calandrinia eremaea</i> (dull-seeded variant)		G2	<2% N	prostrate

Family	Taxon	Status	Stratum	Cover (%)	Height (m)
Poaceae	<i>Cymbopogon ambiguus</i>		G1	<2% T	0.8
Geraniaceae	<i>Erodium cygnorum</i>		G2	<2% T	0.1
Goodeniaceae	<i>Goodenia occidentalis</i>		G2	<2% T	0.1
Euphorbiaceae	<i>Euphorbia drummondii</i>		G2	<2% T	prostrate
Amaranthaceae	<i>Ptilotus chamaecladus</i>		G2	<2% T	prostrate
Asteraceae	<i>Roebuckiella ciliocarpa</i>		G2	<2% T	0.15
Proteaceae	<i>Grevillea hakeoides</i> subsp. <i>stenophylla</i>		M2	<2% T	1.8
Fabaceae	<i>Acacia aptaneura</i>		M1	<2% T	2
Chenopodiaceae	<i>Rhagodia drummondii</i>		G1	<2% T	0.3
Campanulaceae	<i>Wahlenbergia tumidifructa</i>		G2	<2% T	0.2
Fabaceae	<i>Mirbelia ramulosa</i>		G1	<2% T	0.6
Asteraceae	<i>Pogonolepis muelleriana</i>		G2	<2% T	prostrate