

Appendices

Appendix A

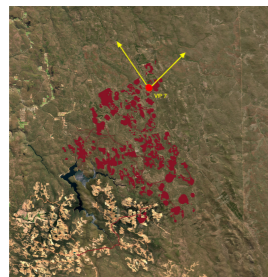
Photomontages



EXISTING VIEW



PROPOSED DESIGN



KEY PLAN

View Direction: 331° - 51°
Horizontal Field Of View: 80°
Camera Height: 1.6 m
Camera Type: Canon EOS 6D
Lens Size: 50 mm
Photograph Time & Date: 5:40 pm,
 14th December 2020

Location: Albany Hwy, Mount Cooke,
 Western Australia
Coordinates: 425463, 6424224
 (GDA 1994 MGA Zone 50)
Viewpoint Elevation: 302 m
Date of Photomontage: 21th August 2021
Issue: v01

Alcoa Huntly Expansion Environmental Approval
Alcoa of Australia Limited

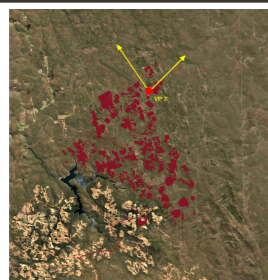
Viewpoint 07 : Albany Highway


GHD Pty Ltd
 Level 8, 180 Lonsdale Street
 Melbourne VIC 3000
 T 61 3 8687 8000 E melmail@ghd.com.au W www.ghd.com

PROPOSED
DESIGN OVERLAY



KEY PLAN



View Direction: 331° - 51°
Horizontal Field Of View: 80°
Camera Height: 1.6 m
Camera Type: Canon EOS 6D
Lens Size: 50 mm
Photograph Time & Date: 5:40 pm,
14th December 2020

Location: Albany Hwy, Mount Cooke,
Western Australia
Coordinates: 425463, 6424224
(GDA 1994 MGA Zone 50)
Viewpoint Elevation: 308 m
Date of Photomontage: 21th August 2021
Issue: v01

Alcoa Huntly Expansion Environmental Approval
Alcoa of Australia Limited

Viewpoint 07 : Albany Highway



GHD Pty Ltd
Level 8, 180 Lonsdale Street
Melbourne VIC 3000
T 61 3 8687 8000 E melmail@ghd.com.au W www.ghd.com

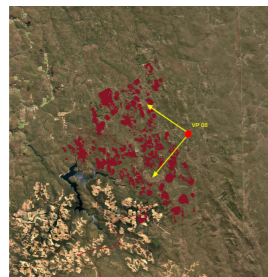
EXISTING VIEW



PROPOSED DESIGN



KEY PLAN



View Direction: 52° - 132°
Horizontal Field Of View: 80°
Camera Height: 1.6 m
Camera Type: Canon EOS 6D
Lens Size: 50 mm
Photograph Time & Date: 9:11 am,
 15th December 2020

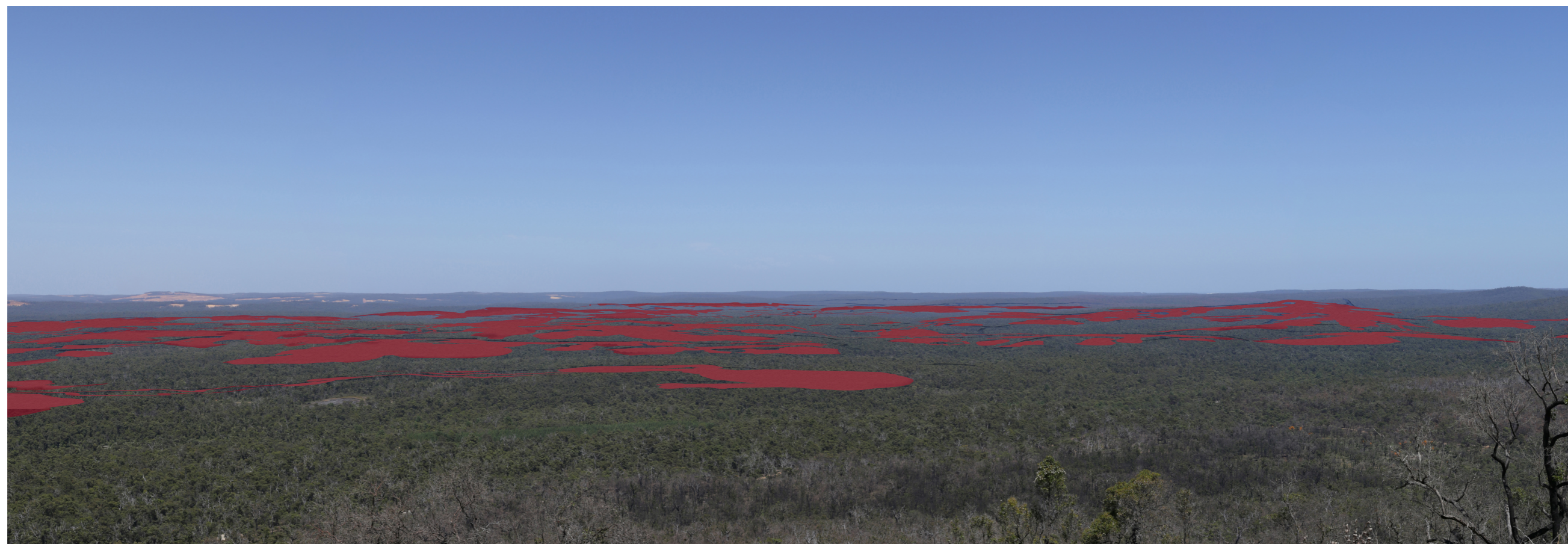
Location: Mount Vincent, Western
 Australia
Coordinates: 429767, 6419003
 (GDA 1994 MGA Zone 50)
Viewpoint Elevation: 530 m
Date of Photomontage: 21th August 2021
Issue: v01

Alcoa Huntly Expansion Environmental Approval
Alcoa of Australia Limited

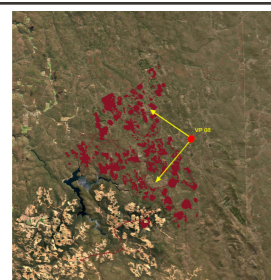
Viewpoint 08 : Mount Vincent


GHD Pty Ltd
 Level 8, 180 Lonsdale Street
 Melbourne VIC 3000
T 61 3 8687 8000 **E** melmail@ghd.com.au **W** www.ghd.com

PROPOSED
DESIGN OVERLAY



KEY PLAN



View Direction:	52° - 132°
Horizontal Field Of View:	80°
Camera Height:	1.6 m
Camera Type:	Canon EOS 6D
Lens Size:	50 mm
Photograph Time & Date:	9:11 am, 15 th December 2020

Location:	Mount Vincent, Western Australia
Coordinates:	429767, 6419003 (GDA 1994 MGA Zone 50)
Viewpoint Elevation:	530 m
Date of Photomontage:	21 st August 2021
Issue:	v01

Alcoa Huntly Expansion Environmental Approval
Alcoa of Australia Limited

Viewpoint 08 : Mount Vincent



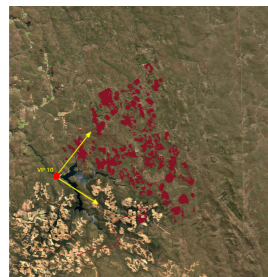
GHD Pty Ltd
Level 8, 180 Lonsdale Street
Melbourne VIC 3000
T 61 3 8687 8000 **E** melmail@ghd.com.au **W** www.ghd.com



EXISTING VIEW



PROPOSED DESIGN




KEY PLAN

View Direction: 39° - 119°
Horizontal Field Of View: 80°
Camera Height: 1.6 m
Camera Type: Canon EOS 6D
Lens Size: 50 mm
Photograph Time & Date: 3:07 pm,
 15th December 2020

Location: Kingsbury Dr, Keysbrook,
 Western Australia
Coordinates: 415200, 6414252
 (GDA 1994 MGA Zone 50)
Viewpoint Elevation: 220 m
Date of Photomontage: 21th August 2021
Issue: v01

Alcoa Huntly Expansion Environmental Approval
Alcoa of Australia Limited

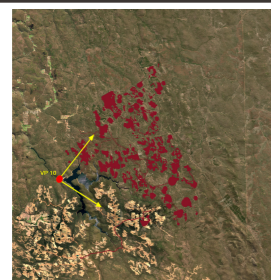
Viewpoint 10 : Serpentine Dam


GHD Pty Ltd
 Level 8, 180 Lonsdale Street
 Melbourne VIC 3000
 T 61 3 8687 8000 E melmail@ghd.com.au W www.ghd.com

PROPOSED
DESIGN OVERLAY



KEY PLAN




View Direction: 39° - 119°
Horizontal Field Of View: 80°
Camera Height: 1.6 m
Camera Type: Canon EOS 6D
Lens Size: 50 mm
Photograph Time & Date: 3:07 pm,
 15th December 2020

Location: Kingsbury Dr, Keysbrook,
 Western Australia
Coordinates: 415200, 6414252
 (GDA 1994 MGA Zone 50)
Viewpoint Elevation: 220 m
Date of Photomontage: 21th August 2021
Issue: v01

Alcoa Huntly Expansion Environmental Approval
Alcoa of Australia Limited

Viewpoint 10 : Serpentine Dam

 **GHD Pty Ltd**
 Level 8, 180 Lonsdale Street
 Melbourne VIC 3000
 T 61 3 8687 8000 E melmail@ghd.com.au W www.ghd.com

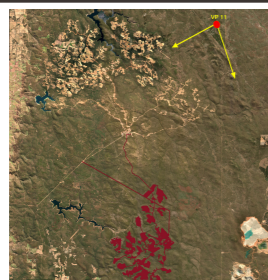
EXISTING VIEW



PROPOSED DESIGN



KEY PLAN



View Direction: 106° - 186°
Horizontal Field Of View: 80°
Camera Height: 1.6 m
Camera Type: Canon EOS 6D
Lens Size: 50 mm
Photograph Time & Date: 12:36 pm,
 14th December 2020

Location: Mount Cooke, Western
 Australia
Coordinates: 434970, 6413276
 (GDA 1994 MGA Zone 50)
Viewpoint Elevation: 561 m
Date of Photomontage: 21st August 2021
Issue: v01

Alcoa Huntly Expansion Environmental Approval
Alcoa of Australia Limited

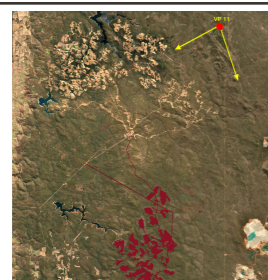
Viewpoint 11 : Mount Cooke


GHD Pty Ltd
 Level 8, 180 Lonsdale Street
 Melbourne VIC 3000
T 61 3 8687 8000 **E** melmail@ghd.com.au **W** www.ghd.com

PROPOSED
DESIGN OVERLAY



KEY PLAN



View Direction: 106° - 186°
Horizontal Field Of View: 80°
Camera Height: 1.6 m
Camera Type: Canon EOS 6D
Lens Size: 50 mm
Photograph Time & Date: 12:36 pm,
14th December 2020

Location: Mount Cooke, Western
Australia
Coordinates: 434970, 6413276
(GDA 1994 MGA Zone 50)
Viewpoint Elevation: 561 m
Date of Photomontage: 21th August 2021
Issue: v01

**Alcoa Huntly Expansion Environmental Approval
Alcoa of Australia Limited**

Viewpoint 11 : Mount Cooke



GHD Pty Ltd
Level 8, 180 Lonsdale Street
Melbourne VIC 3000
T 61 3 8687 8000 E melmail@ghd.com.au W www.ghd.com