

Scale: 1:10,000 at A4, GDA2020 MGA Zone 50

Legend

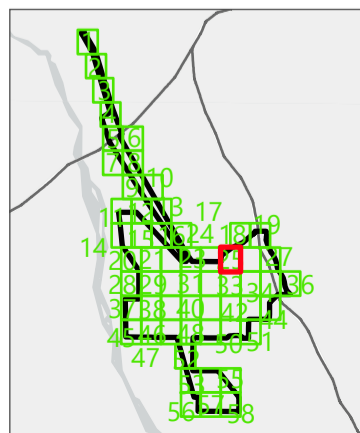
- Survey Area
- Targeted Survey Area
- Road
- 2022 Survey**
- Quadrat
- ▲ Vegetation Mapping Note
- Ecoscape Survey**
- Previous Quadrats
- Quadrats Resurveyed in 2022

Significant Flora (Umwelt 2022, 2024)

- AbspPr *Abutilon* sp. Pritzelianum (S. van Leeuwen 5095) (P3)
- Trch *Triodia chichesterensis* (P3)

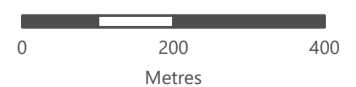
Vegetation Types

- 10
- 11
- 12
- 13
- 14
- 15
- C

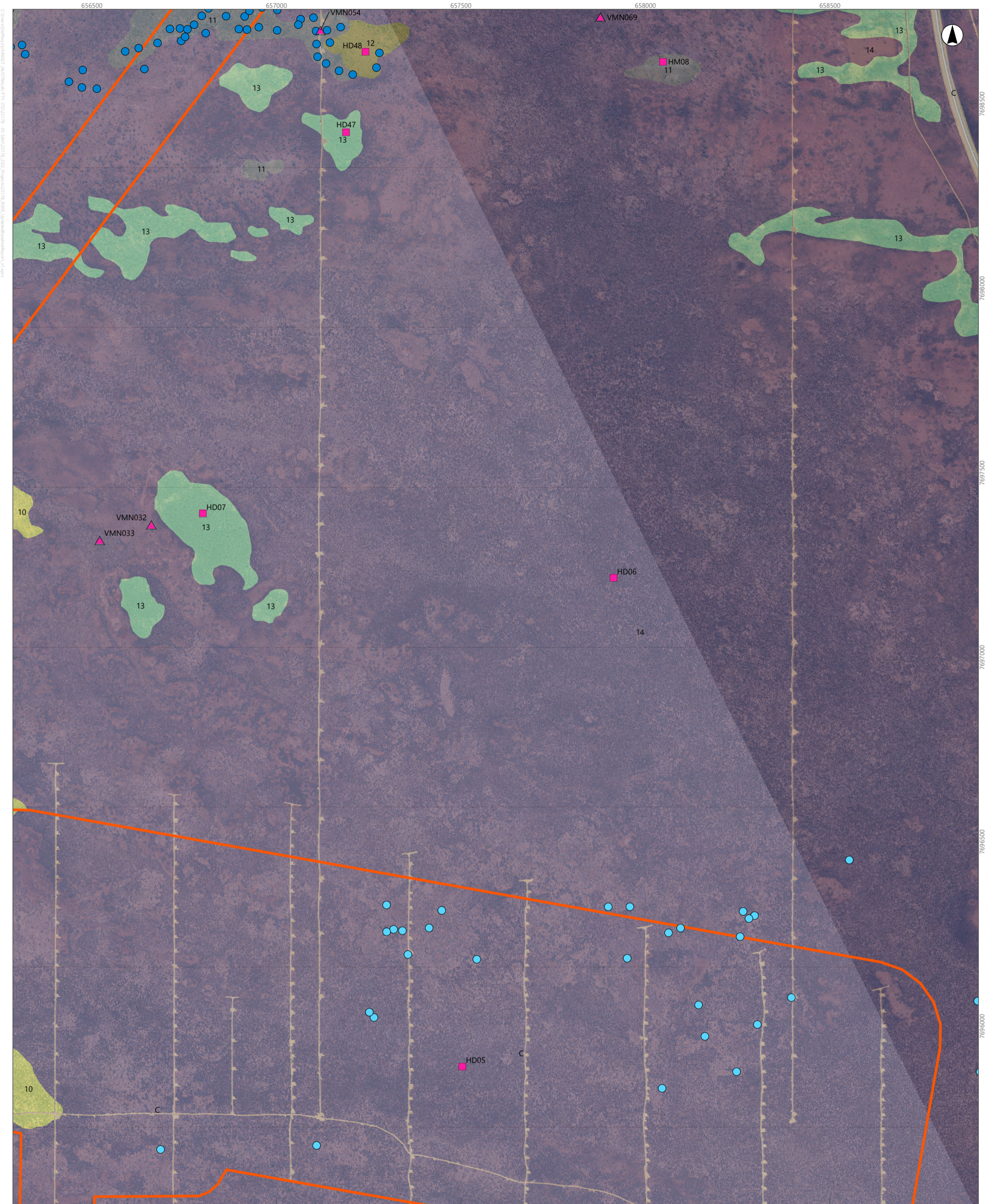


APPENDIX N

Detailed Mapping of Vegetation Types and Other Areas of the Survey Area (Sheet 25)



This document and the information are subject to Terms and Conditions and Umwelt (Australia) Pty Ltd ("Umwelt") Copyright in the drawings, information and data recorded ("the information") is the property of Umwelt. This document and the information are solely for the use of the authorized recipient and this document may not be used, copied or reproduced in whole or part for any purpose other than that which it was supplied by Umwelt. Umwelt makes no representation, undertakes no duty and accepts no responsibility to any third party who may use or rely upon this document or the information.
APPROVED FOR AND ON BEHALF OF Umwelt



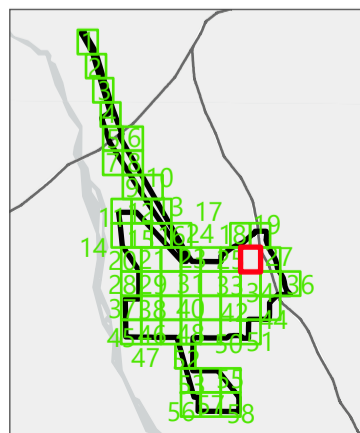
Scale: 1:10,000 at A4, GDA2020 MGA Zone 50

Legend

- Survey Area
- Targeted Survey Area
- Road
- 2022 Survey**
- Quadrat
- Vegetation Mapping Note

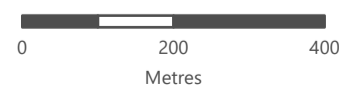
- Significant Flora (Umwelt 2022, 2024)**
- AbspPr *Abutilon* sp. Pritzelianum (S. van Leeuwen 5095) (P3)
 - Trch *Triodia chichesterensis* (P3)

- Vegetation Types**
- 10
 - 11
 - 12
 - 13
 - 14
 - C



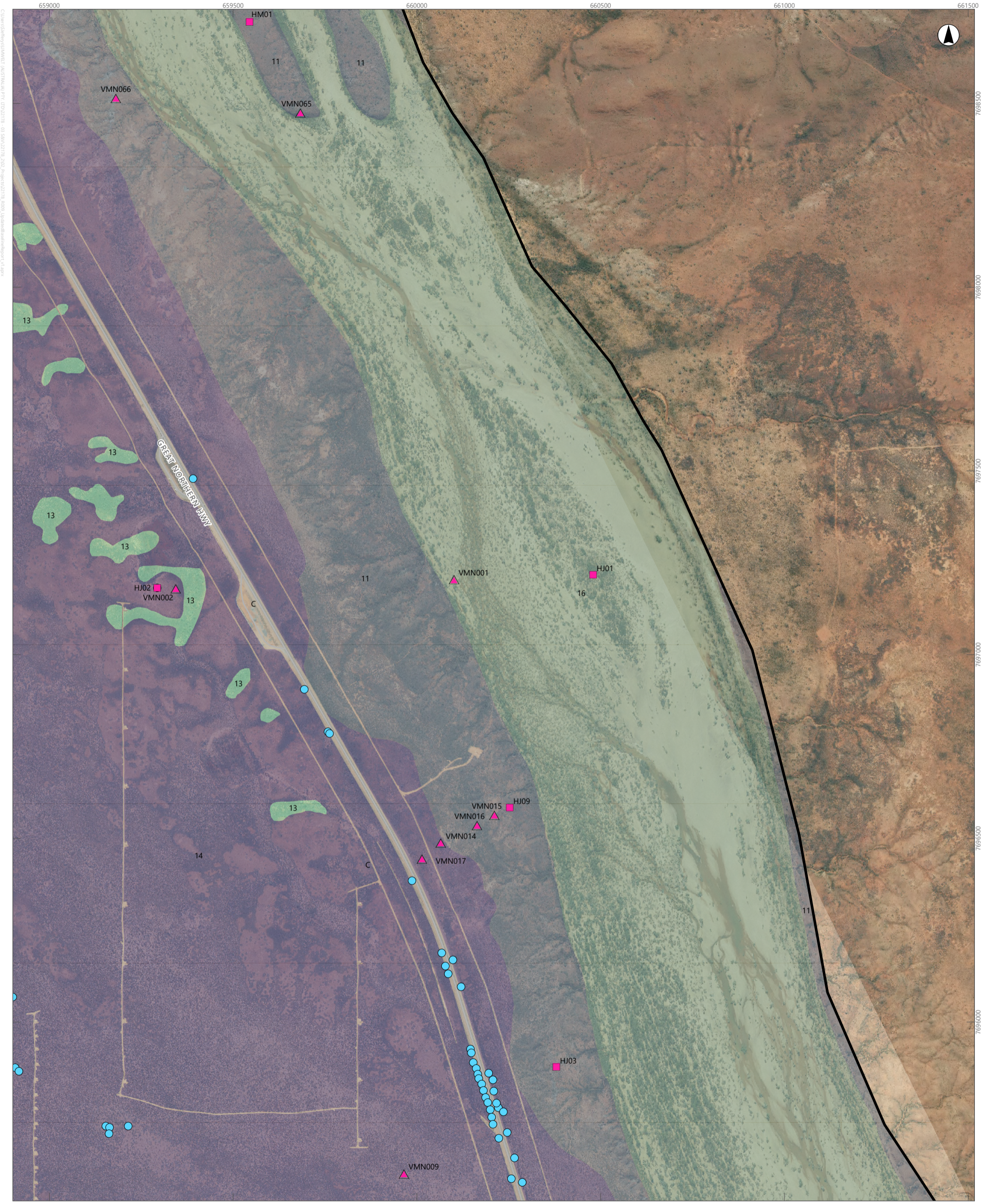
APPENDIX N

Detailed Mapping of Vegetation Types and Other Areas of the Survey Area (Sheet 26)



This document and the information are subject to Terms and Conditions and Umwelt (Australia) Pty Ltd ("Umwelt") Copyright in the drawings, information and data recorded ("the information") is the property of Umwelt. This document and the information are solely for the use of the authorized recipient and this document may not be used, copied or reproduced in whole or part for any purpose other than that which it was supplied by Umwelt. Umwelt makes no representation, undertakes no duty and accepts no responsibility to any third party who may use or rely upon this document or the information.

APPROVED FOR AND ON BEHALF OF Umwelt



Scale: 1:10,000 at A4, GDA2020 MGA Zone 50

Legend

Survey Area

Road

2022 Survey

Quadrat

Vegetation Mapping Note

Significant Flora (Umwelt 2022, 2024)

AbspPr *Abutilon* sp. Pritzelianum (S. van Leeuwen 5095) (P3)

Vegetation Types

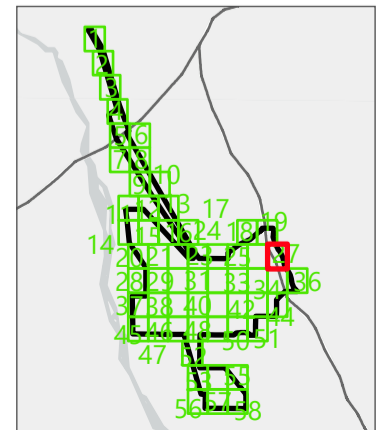
11

13

14

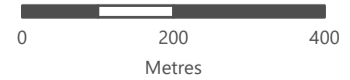
16

C



APPENDIX N

Detailed Mapping of Vegetation Types and Other Areas of the Survey Area (Sheet 27)

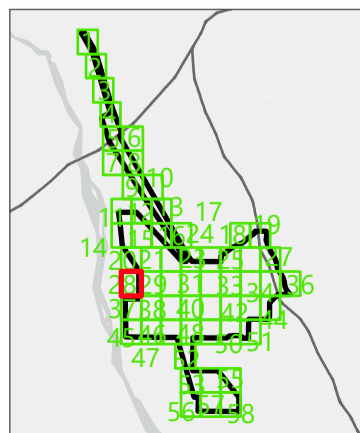


This document and the information are subject to Terms and Conditions and Umwelt (Australia) Pty Ltd ("Umwelt") Copyright in the drawings, information and data recorded ("the information") is the property of Umwelt. This document and the information are solely for the use of the authorized recipient and this document may not be used, copied or reproduced in whole or part for any purpose other than that which it was supplied by Umwelt. Umwelt makes no representation, undertakes no duty and accepts no responsibility to any third party who may use or rely upon this document or the information.
APPROVED FOR AND ON BEHALF OF Umwelt



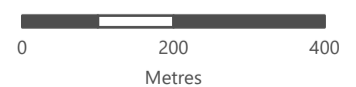
Scale: 1:10,000 at A4, GDA2020 MGA Zone 50

- Legend**
- Survey Area
 - Vegetation Types**
 - 4
 - 10
 - C



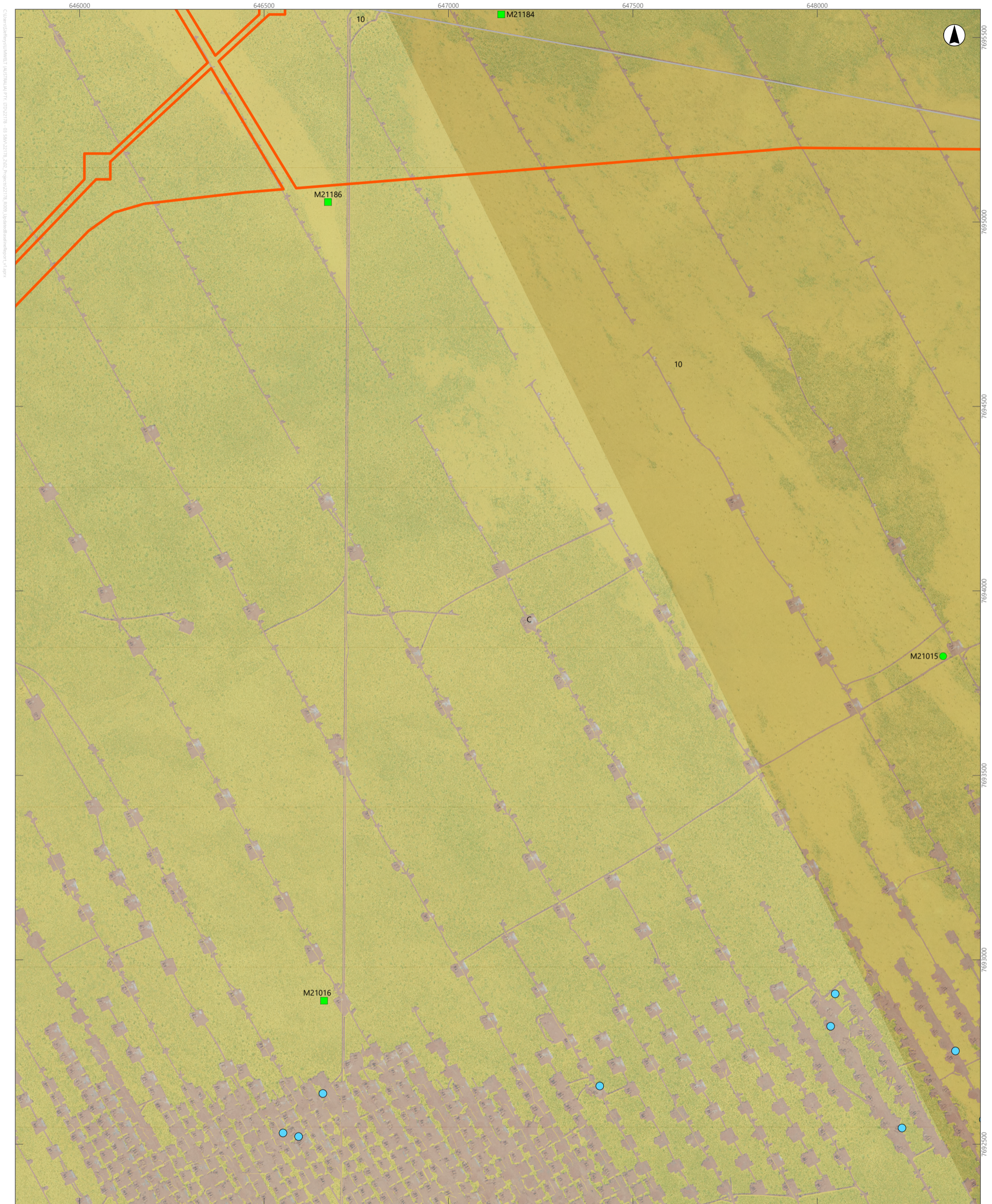
APPENDIX N

Detailed Mapping of Vegetation Types and Other Areas of the Survey Area (Sheet 28)



This document and the information are subject to Terms and Conditions and Umwelt (Australia) Pty Ltd ("Umwelt") Copyright in the drawings, information and data recorded ("the information") is the property of Umwelt. This document and the information are solely for the use of the authorized recipient and this document may not be used, copied or reproduced in whole or part for any purpose other than that which it was supplied by Umwelt. Umwelt makes no representation, undertakes no duty and accepts no responsibility to any third party who may use or rely upon this document or the information.

APPROVED FOR AND ON BEHALF OF Umwelt



Scale: 1:10,000 at A4, GDA2020 MGA Zone 50

Legend

- Survey Area
- Targeted Survey Area
- Road

Ecoscape Survey

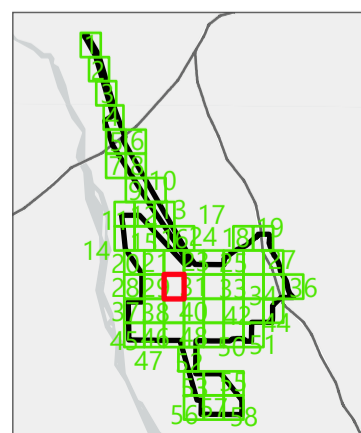
- Previous Quadrats
- Quadrats Resurveyed in 2022

Significant Flora (Umwelt 2022, 2024)

- AbspPr *Abutilon* sp. Pritzelianum (S. van Leeuwen 5095) (P3)

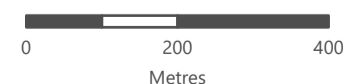
Vegetation Types

- 10
- C

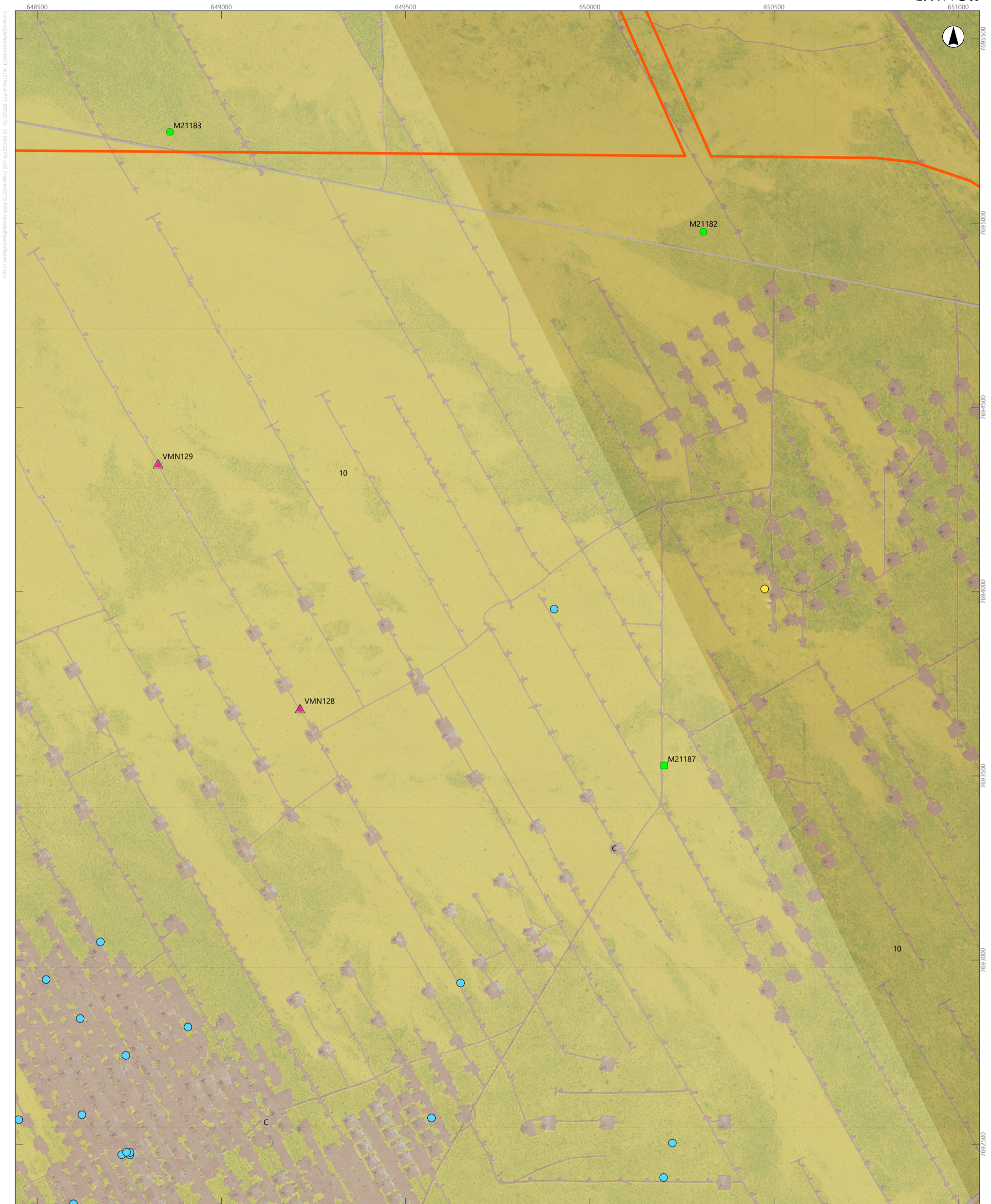


APPENDIX N

Detailed Mapping of Vegetation Types and Other Areas of the Survey Area (Sheet 30)



This document and the information are subject to Terms and Conditions and Umwelt (Australia) Pty Ltd ("Umwelt") Copyright in the drawings, information and data recorded ("the information") is the property of Umwelt. This document and the information are solely for the use of the authorized recipient and this document may not be used, copied or reproduced in whole or part for any purpose other than that which it was supplied by Umwelt. Umwelt makes no representation, undertakes no duty and accepts no responsibility to any third party who may use or rely upon this document or the information.
APPROVED FOR AND ON BEHALF OF Umwelt



Scale: 1:10,000 at A4, GDA2020 MGA Zone 50

Legend

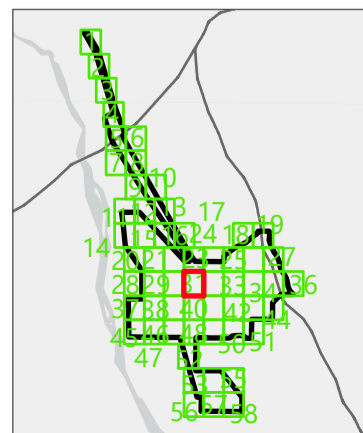
- Survey Area
- Targeted Survey Area
- Road
- 2022 Survey**
- ▲ Vegetation Mapping Note
- Ecoscape Survey**
- Previous Quadrats
- Quadrats Resurveyed in 2022

Significant Flora (Umwelt 2022, 2024)

- AbspPr *Abutilon* sp. Pritzelianum (S. van Leeuwen 5095) (P3)
- Poly *Polymeria* sp. nov (Pot)

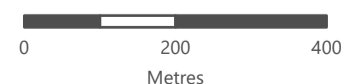
Vegetation Types

- 10
- C



APPENDIX N

Detailed Mapping of Vegetation Types and Other Areas of the Survey Area (Sheet 31)



This document and the information are subject to Terms and Conditions and Umwelt (Australia) Pty Ltd ("Umwelt") Copyright in the drawings, information and data recorded ("the information") is the property of Umwelt. This document and the information are solely for the use of the authorized recipient and this document may not be used, copied or reproduced in whole or part for any purpose other than that which it was supplied by Umwelt. Umwelt makes no representation, undertakes no duty and accepts no responsibility to any third party who may use or rely upon this document or the information.
APPROVED FOR AND ON BEHALF OF Umwelt