

Legend

- Survey Area
- Targeted Survey Area
- Road

Ecoscape Survey

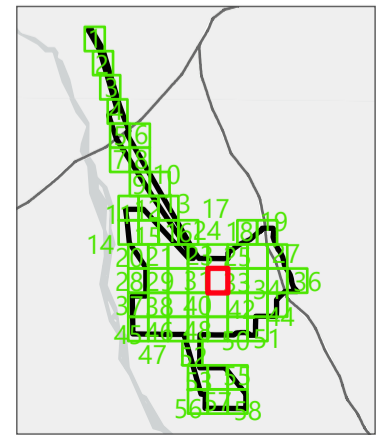
- Previous Quadrats
- Quadrats Resurveyed in 2022

Significant Flora (Umwelt 2022, 2024)

- AbspPr *Abutilon* sp. Pritzelianum (S. van Leeuwen 5095) (P3)

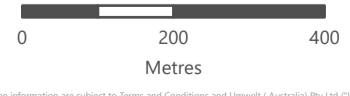
Vegetation Types

- 10
- 14
- C



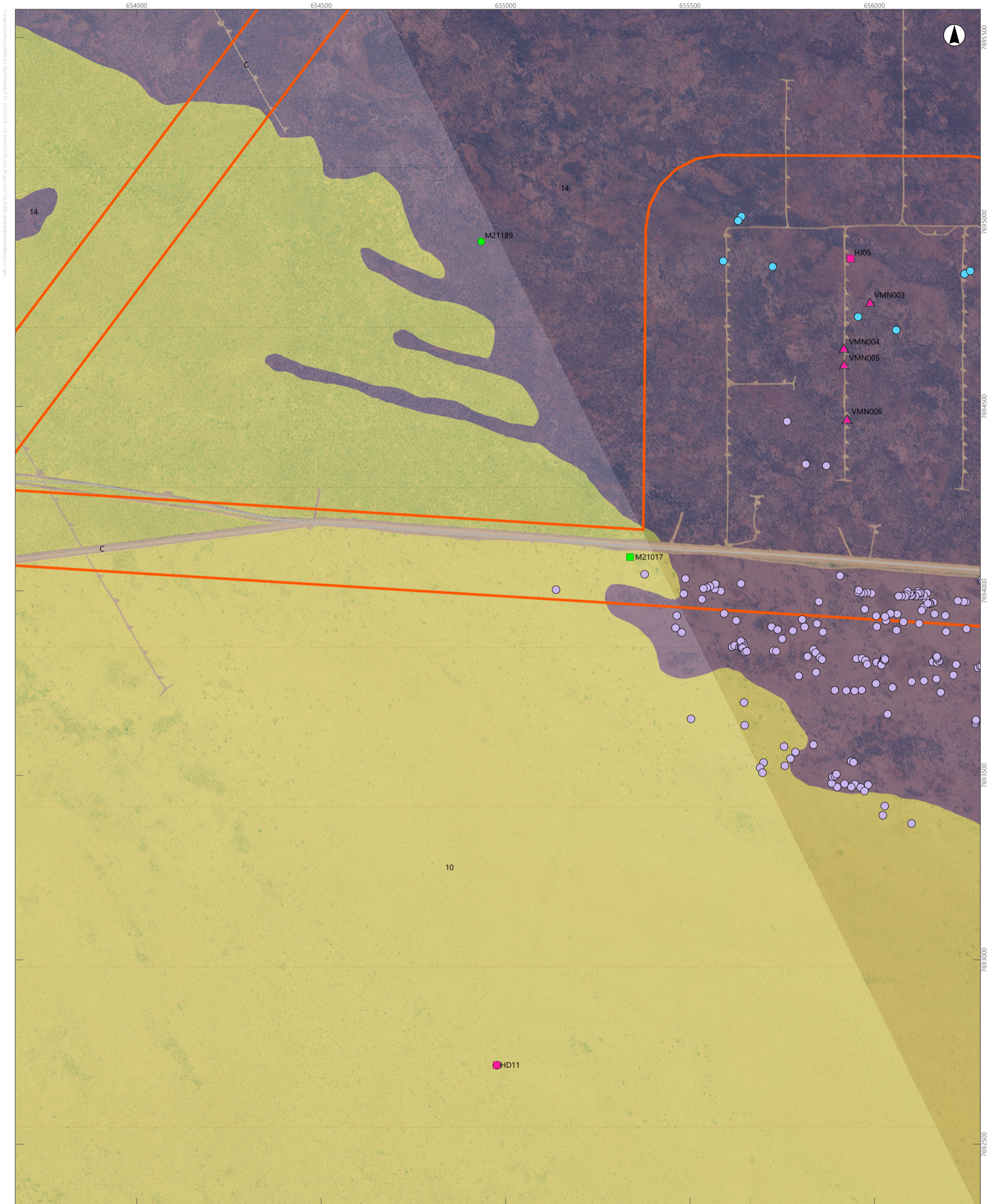
APPENDIX N

Detailed Mapping of Vegetation Types and Other Areas of the Survey Area (Sheet 32)



This document and the information are subject to Terms and Conditions and Umwelt (Australia) Pty Ltd ("Umwelt") Copyright in the drawings, information and data recorded ("the information") is the property of Umwelt. This document and the information are solely for the use of the authorized recipient and this document may not be used, copied or reproduced in whole or part for any purpose other than that which it was supplied by Umwelt. Umwelt makes no representation, undertakes no duty and accepts no responsibility to any third party who may use or rely upon this document or the information.

APPROVED FOR AND ON BEHALF OF Umwelt



Scale: 1:10,000 at A4, GDA2020 MGA Zone 50

Legend

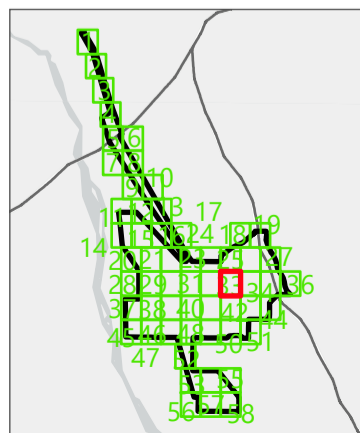
- Survey Area
- Targeted Survey Area
- Road
- 2022 Survey**
- Quadrat
- ▲ Vegetation Mapping Note
- Ecoscape Survey**
- Previous Quadrats
- Quadrats Resurveyed in 2022

Significant Flora (Umwelt 2022, 2024)

- AbspPr *Abutilon* sp. Pritzelianum (S. van Leeuwen 5095) (P3)
- Eumu *Euploca mutica* (P3)

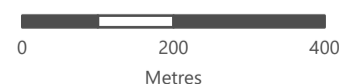
Vegetation Types

- 10
- 14
- C



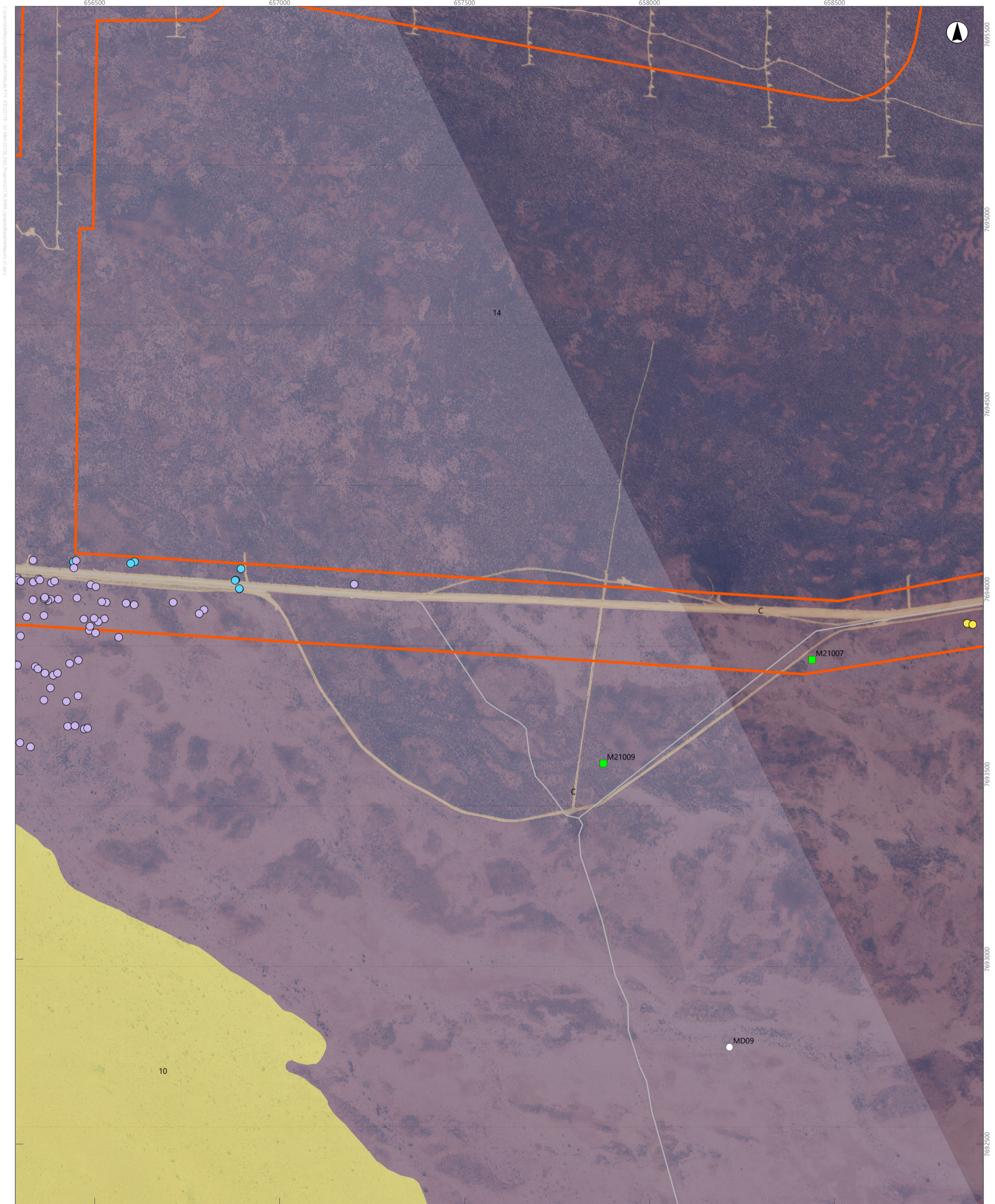
APPENDIX N

Detailed Mapping of Vegetation Types and Other Areas of the Survey Area (Sheet 33)



This document and the information are subject to Terms and Conditions and Umwelt (Australia) Pty Ltd ("Umwelt") Copyright in the drawings, information and data recorded ("the information") is the property of Umwelt. This document and the information are solely for the use of the authorized recipient and this document may not be used, copied or reproduced in whole or part for any purpose other than that which it was supplied by Umwelt. Umwelt makes no representation, undertakes no duty and accepts no responsibility to any third party who may use or rely upon this document or the information.

APPROVED FOR AND ON BEHALF OF Umwelt



Scale: 1:10,000 at A4, GDA2020 MGA Zone 50

Legend

Survey Area

Targeted Survey Area

Road

Ecoscape Survey

Quadrats Resurveyed in 2022

Mount Dove Survey

Previous Quadrats

Significant Flora (Umwelt 2022, 2024)

AbspPr *Abutilon* sp. Pritzelianum (S. van Leeuwen 5095) (P3)

Eumu *Euploca mutica* (P3)

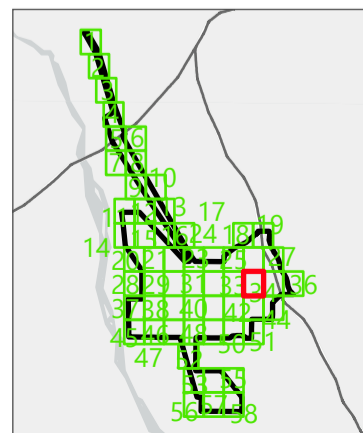
Poly *Polymeria* sp. nov (Pot)

Vegetation Types

10

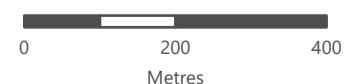
14

C

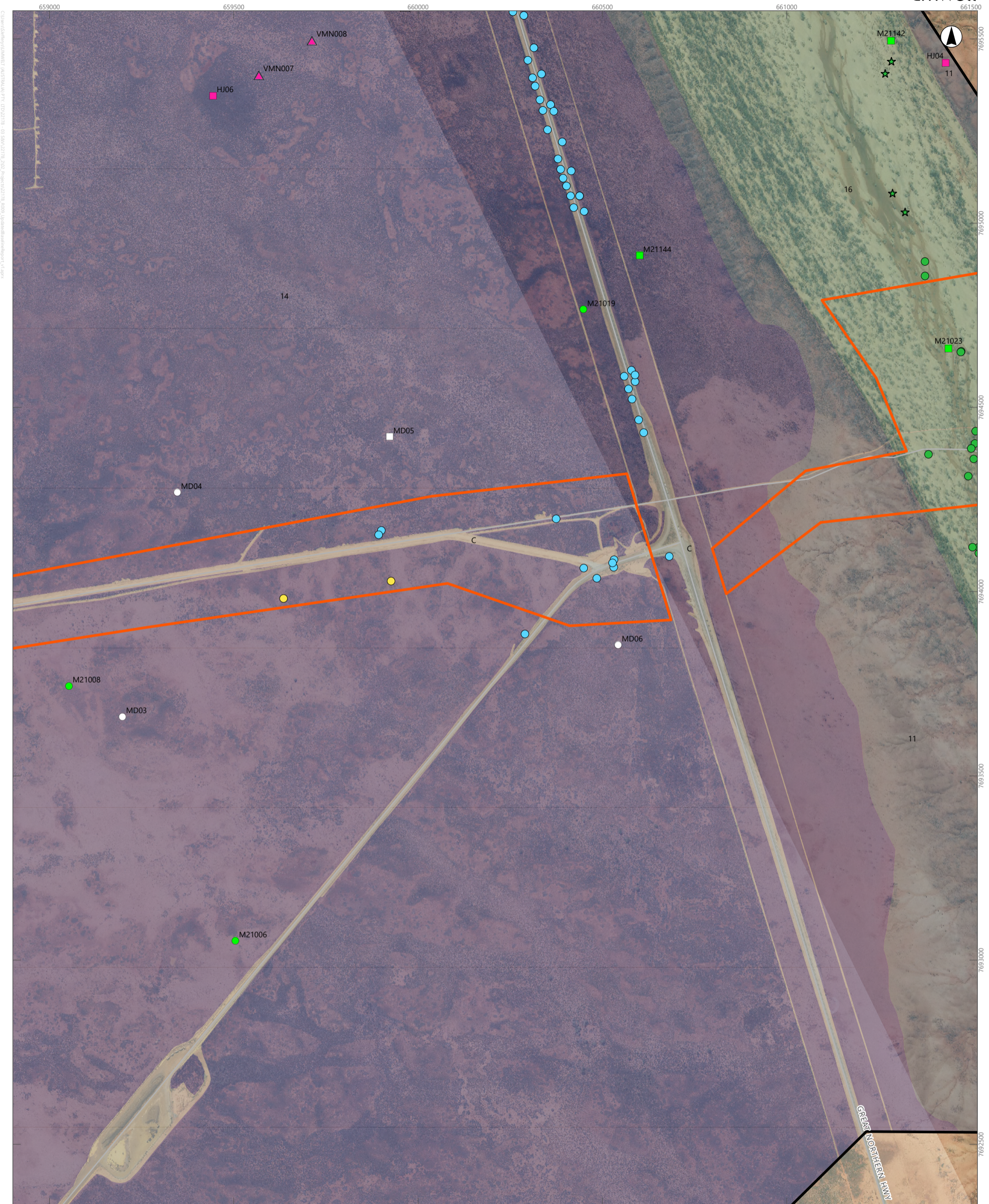


APPENDIX N

Detailed Mapping of Vegetation Types and Other Areas of the Survey Area (Sheet 34)



This document and the information are subject to Terms and Conditions and Umwelt (Australia) Pty Ltd ("Umwelt") Copyright in the drawings, information and data recorded ("the information") is the property of Umwelt. This document and the information are solely for the use of the authorized recipient and this document may not be used, copied or reproduced in whole or part for any purpose other than that which it was supplied by Umwelt. Umwelt makes no representation, undertakes no duty and accepts no responsibility to any third party who may use or rely upon this document or the information.
APPROVED FOR AND ON BEHALF OF Umwelt



Scale: 1:10,000 at A4, GDA2020 MGA Zone 50

Legend

- Survey Area
- Targeted Survey Area
- Road
- 2022 Survey**
- Quadrat
- Vegetation Mapping Note
- Ecoscape Survey**
- Previous Quadrats
- Quadrats Resurveyed in 2022
- Mount Dove Survey**
- Previous Quadrats
- Quadrats Resurveyed in 2022

Significant Flora (Umwelt 2022, 2024)

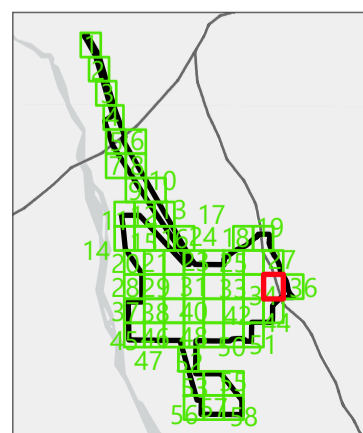
- AbspPr *Abutilon* sp. Pritzelianum (S. van Leeuwen 5095) (P3)
- Gycu *Gymnanthera cunninghamii* (P3)
- Poly *Polymeria* sp. nov. (Pot)

Significant Flora (Ecoscape 2021)

- Gycu *Gymnanthera cunninghamii* (P3)

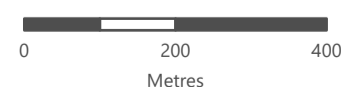
Vegetation Types

- 11
- 14
- 16
- C

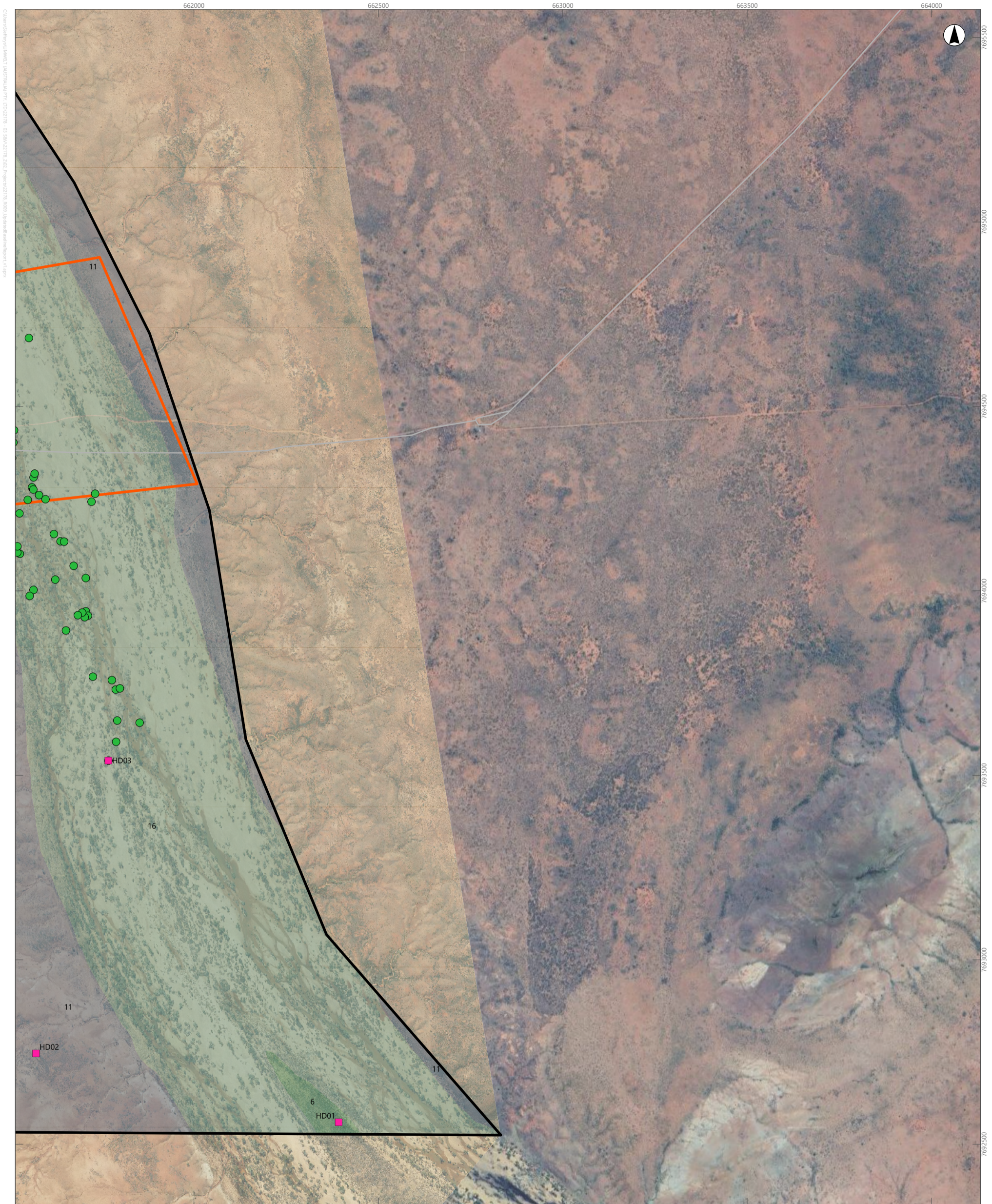


APPENDIX N

Detailed Mapping of Vegetation Types and Other Areas of the Survey Area (Sheet 35)



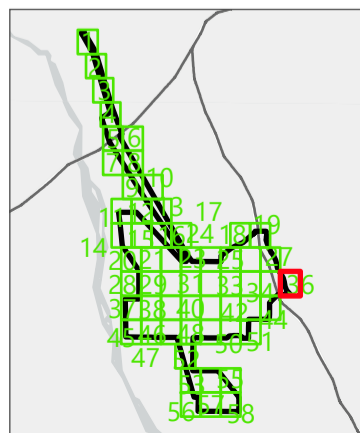
This document and the information are subject to Terms and Conditions and Umwelt (Australia) Pty Ltd ("Umwelt") Copyright in the drawings, information and data recorded ("the information") is the property of Umwelt. This document and the information are solely for the use of the authorized recipient and this document may not be used, copied or reproduced in whole or part for any purpose other than that which it was supplied by Umwelt. Umwelt makes no representation, undertakes no duty and accepts no responsibility to any third party who may use or rely upon this document or the information.
APPROVED FOR AND ON BEHALF OF Umwelt



Scale: 1:10,000 at A4, GDA2020 MGA Zone 50

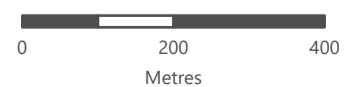
Legend

- Survey Area
 - Targeted Survey Area
 - Road
 - 2022 Survey**
 - Quadrat
- Significant Flora (Umwelt 2022, 2024)**
 - *Gyca Gymnanthera cunninghamii* (P3)
- Vegetation Types**
 - 6
 - 11
 - 16
 - C



APPENDIX N

Detailed Mapping of Vegetation Types and Other Areas of the Survey Area (Sheet 36)



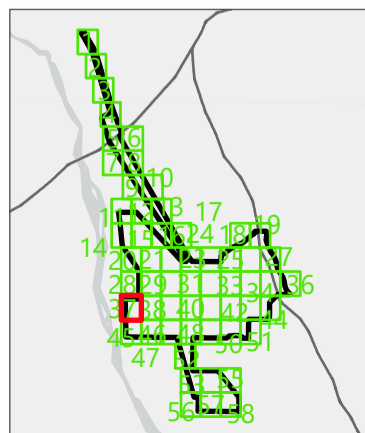
This document and the information are subject to Terms and Conditions and Umwelt (Australia) Pty Ltd ("Umwelt") Copyright in the drawings, information and data recorded ("the information") is the property of Umwelt. This document and the information are solely for the use of the authorized recipient and this document may not be used, copied or reproduced in whole or part for any purpose other than that which it was supplied by Umwelt. Umwelt makes no representation, undertakes no duty and accepts no responsibility to any third party who may use or rely upon this document or the information.

APPROVED FOR AND ON BEHALF OF Umwelt



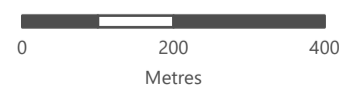
Scale: 1:10,000 at A4, GDA2020 MGA Zone 50

- Legend**
- Survey Area
 - 2022 Survey Quadrat
 - ▲ Vegetation Mapping Note
 - Ecoscape Survey Previous Quadrats
 - Quadrats Resurveyed in 2022
- Vegetation Types**
- 4
 - 10
 - 12
 - 17
 - C



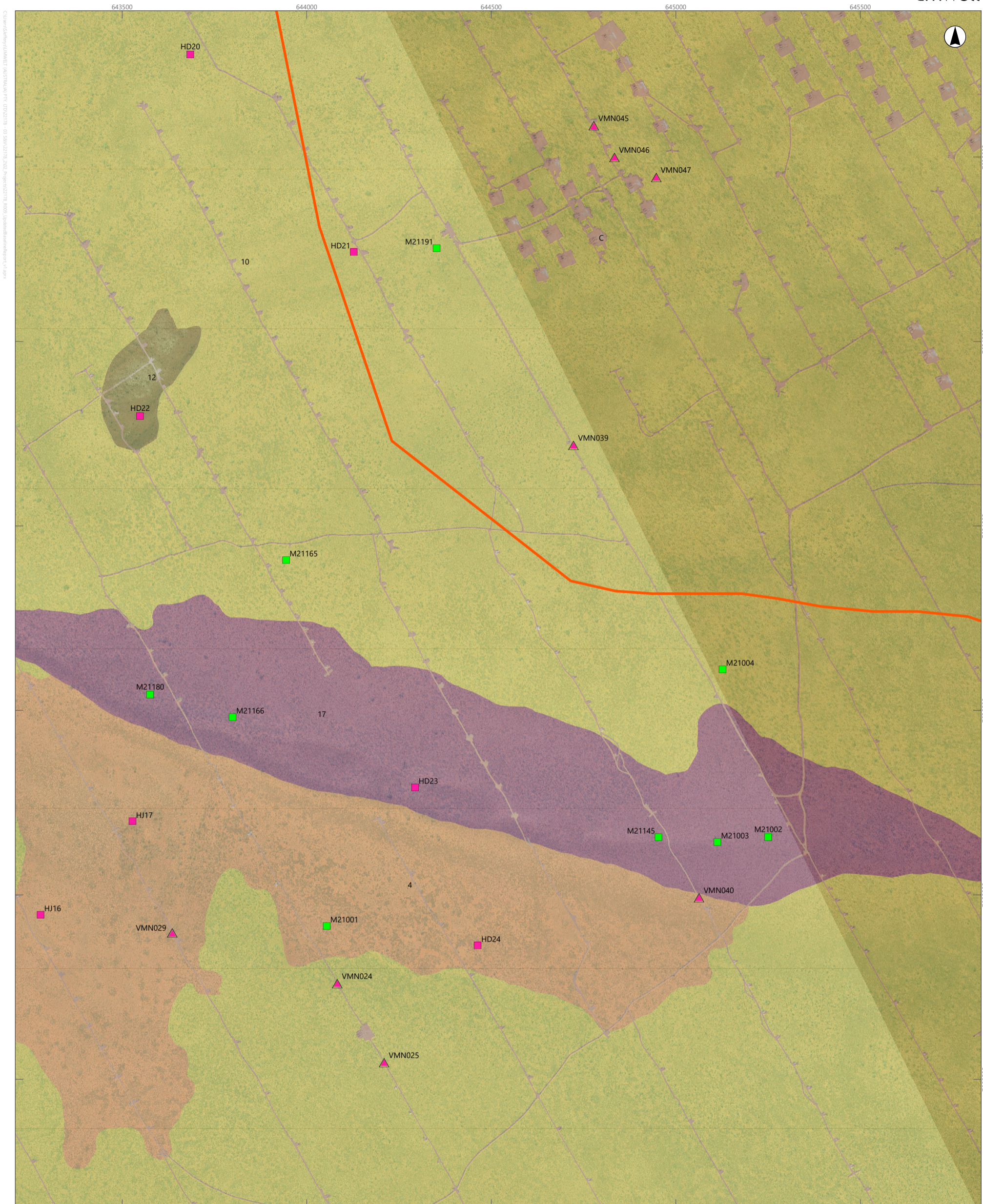
APPENDIX N

Detailed Mapping of Vegetation Types and Other Areas of the Survey Area (Sheet 37)



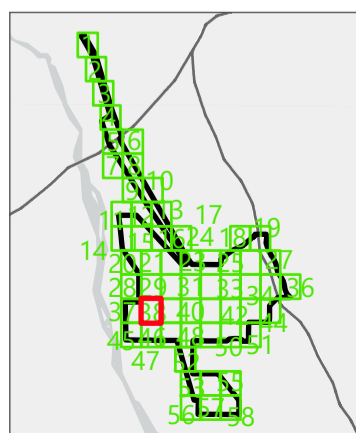
This document and the information are subject to Terms and Conditions and Umwelt (Australia) Pty Ltd ("Umwelt") Copyright in the drawings, information and data recorded ("the information") is the property of Umwelt. This document and the information are solely for the use of the authorized recipient and this document may not be used, copied or reproduced in whole or part for any purpose other than that which it was supplied by Umwelt. Umwelt makes no representation, undertakes no duty and accepts no responsibility to any third party who may use or rely upon this document or the information.

APPROVED FOR AND ON BEHALF OF Umwelt



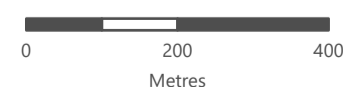
Scale: 1:10,000 at A4, GDA2020 MGA Zone 50

- Legend**
- Survey Area
 - Targeted Survey Area
 - 2022 Survey**
 - Quadrat
 - Vegetation Mapping Note
 - Ecoscape Survey**
 - Quadrats Resurveyed in 2022
- Vegetation Types**
- 4
 - 10
 - 12
 - 17
 - C



APPENDIX N

Detailed Mapping of Vegetation Types and Other Areas of the Survey Area (Sheet 38)



This document and the information are subject to Terms and Conditions and Umwelt (Australia) Pty Ltd ("Umwelt") Copyright in the drawings, information and data recorded ("the information") is the property of Umwelt. This document and the information are solely for the use of the authorized recipient and this document may not be used, copied or reproduced in whole or part for any purpose other than that which it was supplied by Umwelt. Umwelt makes no representation, undertakes no duty and accepts no responsibility to any third party who may use or rely upon this document or the information.

APPROVED FOR AND ON BEHALF OF Umwelt