

Scale: 1:10,000 at A4, GDA2020 MGA Zone 50

Legend

Survey Area

Targeted Survey Area

Road

Ecoscape Survey

Quadrats Resurveyed in 2022

Significant Flora (Umwelt 2022, 2024)

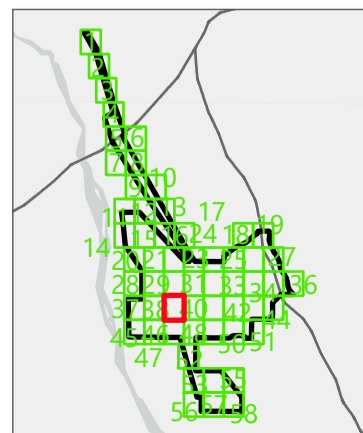
AbspPr *Abutilon* sp. Pritzelianum (S. van Leeuwen 5095) (P3)

Vegetation Types

10

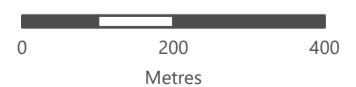
17

C



APPENDIX N

Detailed Mapping of Vegetation Types and Other Areas of the Survey Area (Sheet 39)



This document and the information are subject to Terms and Conditions and Umwelt (Australia) Pty Ltd ("Umwelt") Copyright in the drawings, information and data recorded ("the information") is the property of Umwelt. This document and the information are solely for the use of the authorized recipient and this information may not be used, copied or reproduced in whole or part for any purpose other than that which it was supplied by Umwelt. Umwelt makes no representation, undertakes no duty and accepts no responsibility to any third party who may use or rely upon this document or the information.
APPROVED FOR AND ON BEHALF OF Umwelt



Scale: 1:10,000 at A4, GDA2020 MGA Zone 50

Legend

- Survey Area
- Targeted Survey Area
- Road

Ecoscape Survey

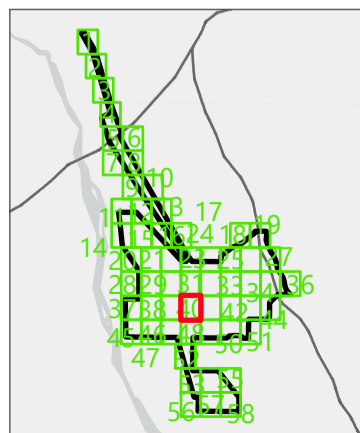
- Previous Quadrats
- Quadrats Resurveyed in 2022

Significant Flora (Umwelt 2022, 2024)

- AbspPr *Abutilon* sp. Pritzelianum (S. van Leeuwen 5095) (P3)

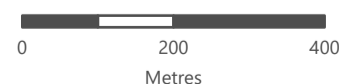
Vegetation Types

- 9
- 10
- C

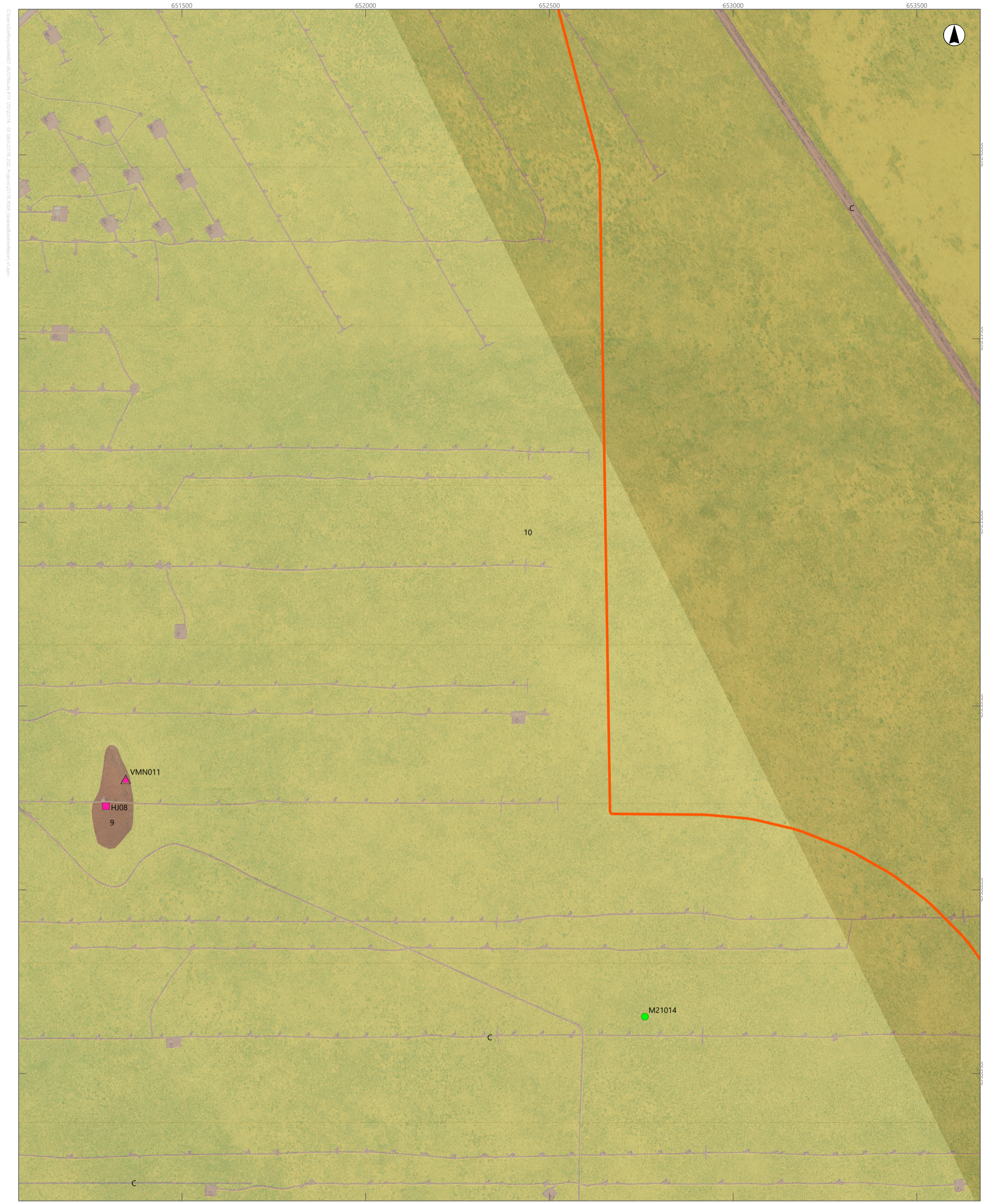


APPENDIX N

Detailed Mapping of Vegetation Types and Other Areas of the Survey Area (Sheet 40)

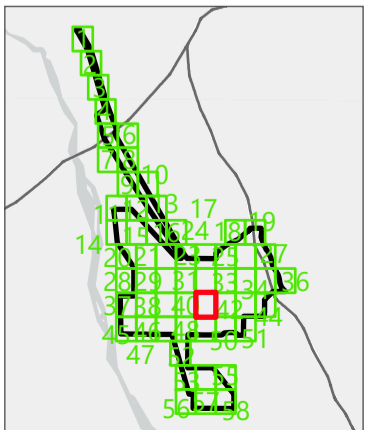


This document and the information are subject to Terms and Conditions and Umwelt (Australia) Pty Ltd ("Umwelt") Copyright in the drawings, information and data recorded ("the information") is the property of Umwelt. This document and the information are solely for the use of the authorized recipient and this document may not be used, copied or reproduced in whole or part for any purpose other than that which it was supplied by Umwelt. Umwelt makes no representation, undertakes no duty and accepts no responsibility to any third party who may use or rely upon this document or the information.
APPROVED FOR AND ON BEHALF OF Umwelt



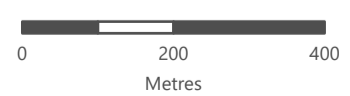
Scale: 1:10,000 at A4, GDA2020 MGA Zone 50

- Legend**
- Survey Area
 - Targeted Survey Area
 - Road
 - 2022 Survey**
 - Quadrat
 - Vegetation Mapping Note
 - Ecoscape Survey**
 - Previous Quadrats
- Vegetation Types**
- 9
 - 10
 - C



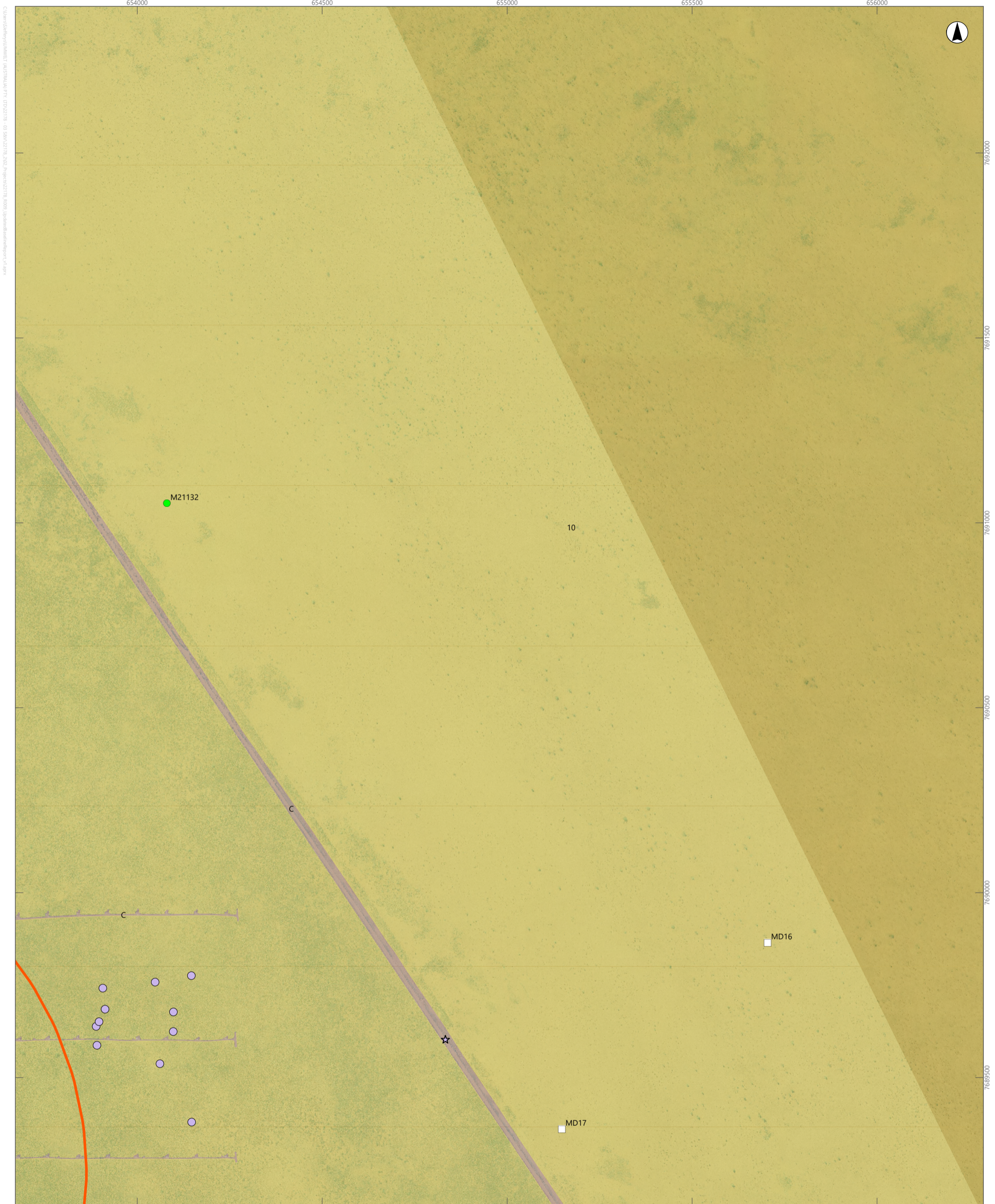
APPENDIX N

Detailed Mapping of Vegetation Types and Other Areas of the Survey Area (Sheet 41)



This document and the information are subject to Terms and Conditions and Umwelt (Australia) Pty Ltd ("Umwelt") Copyright in the drawings, information and data recorded ("the information") is the property of Umwelt. This document and the information are solely for the use of the authorized recipient and this document may not be used, copied or reproduced in whole or part for any purpose other than that which it was supplied by Umwelt. Umwelt makes no representation, undertakes no duty and accepts no responsibility to any third party who may use or rely upon this document or the information.

APPROVED FOR AND ON BEHALF OF Umwelt



Scale: 1:10,000 at A4, GDA2020 MGA Zone 50

Legend

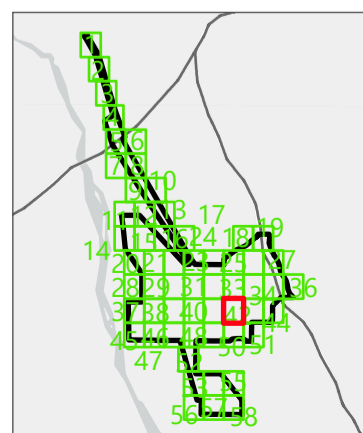
- Survey Area
- Targeted Survey Area
- Ecoscape Survey**
- Previous Quadrats
- Mount Dove Survey**
- Quadrats Resurveyed in 2022

Significant Flora (Umwelt 2022, 2024)

- Eumu *Euploca mutica* (P3)
- Significant Flora (Ecoscape 2021)**
- ★ Eumu *Euploca mutica* (P3)

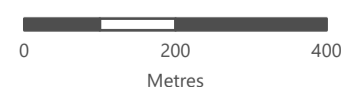
Vegetation Types

- 10
- C

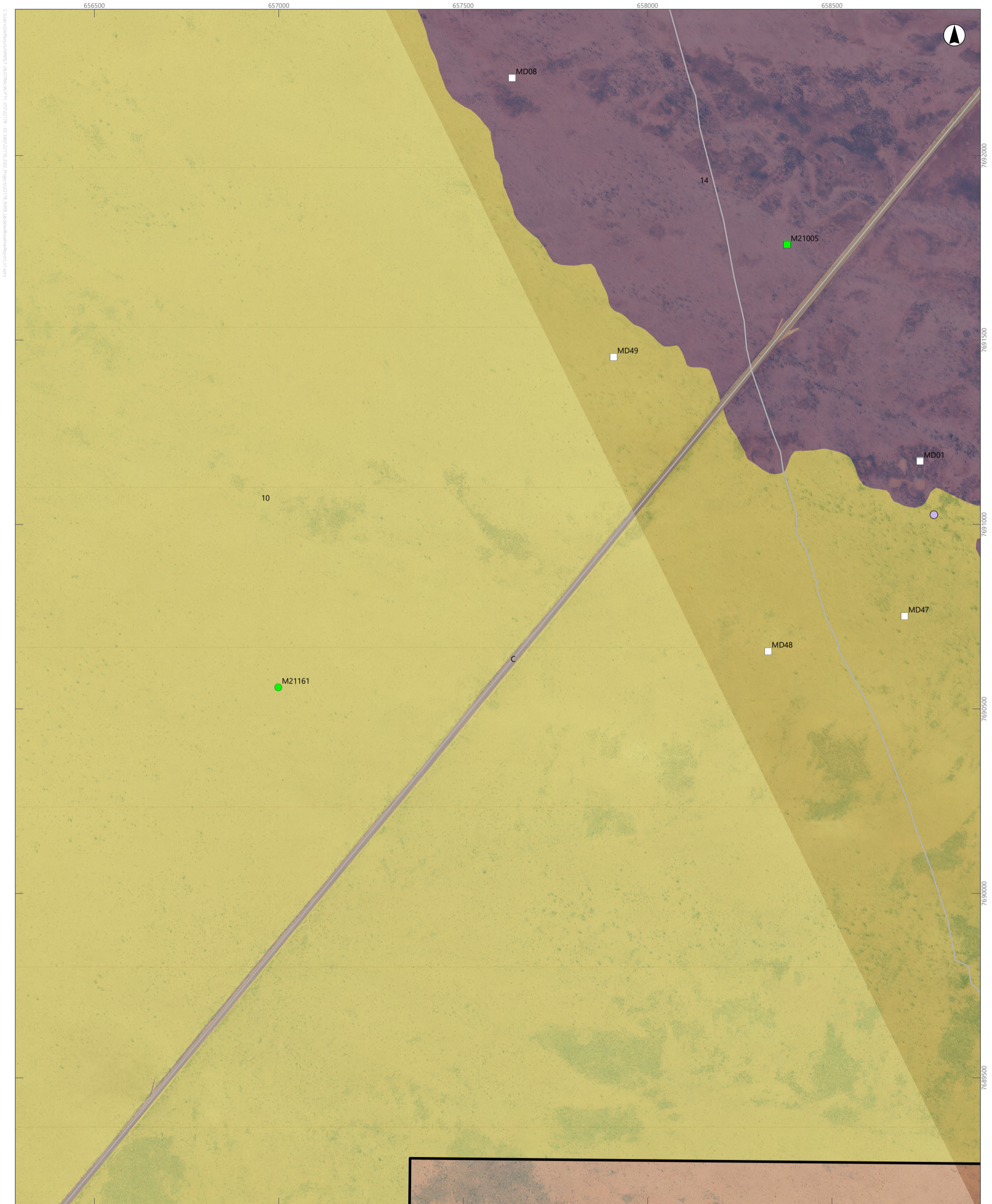


APPENDIX N

Detailed Mapping of Vegetation Types and Other Areas of the Survey Area (Sheet 42)



This document and the information are subject to Terms and Conditions and Umwelt (Australia) Pty Ltd ("Umwelt") Copyright in the drawings, information and data recorded ("the information") is the property of Umwelt. This document and the information are solely for the use of the authorized recipient and this document may not be used, copied or reproduced in whole or part for any purpose other than that which it was supplied by Umwelt. Umwelt makes no representation, undertakes no duty and accepts no responsibility to any third party who may use or rely upon this document or the information.
APPROVED FOR AND ON BEHALF OF Umwelt



Scale: 1:10,000 at A4, GDA2020 MGA Zone 50

Legend

- Survey Area
- Road

Ecoscape Survey

- Previous Quadrats
- Quadrats Resurveyed in 2022

Mount Dove Survey

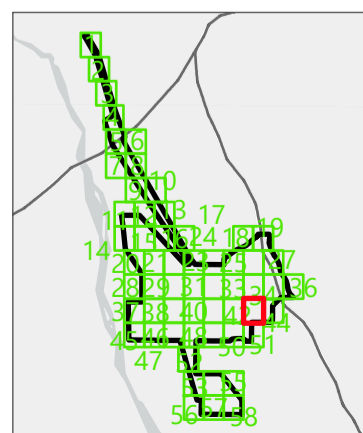
- Quadrats Resurveyed in 2022

Significant Flora (Umwelt 2022, 2024)

- Eumu *Euploca mutica* (P3)

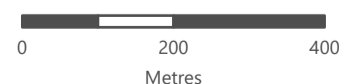
Vegetation Types

- 10
- 14
- C



APPENDIX N

Detailed Mapping of Vegetation Types and Other Areas of the Survey Area (Sheet 43)

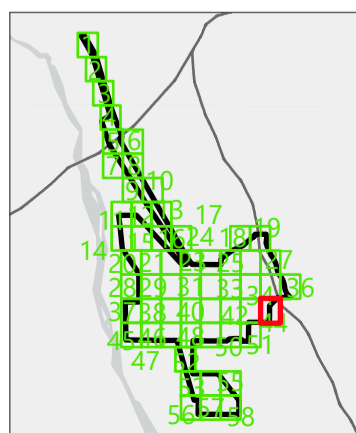


This document and the information are subject to Terms and Conditions and Umwelt (Australia) Pty Ltd ("Umwelt") Copyright in the drawings, information and data recorded ("the information") is the property of Umwelt. This document and the information are solely for the use of the authorized recipient and this document may not be used, copied or reproduced in whole or part for any purpose other than that which it was supplied by Umwelt. Umwelt makes no representation, undertakes no duty and accepts no responsibility to any third party who may use or rely upon this document or the information.
APPROVED FOR AND ON BEHALF OF Umwelt



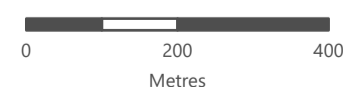
Scale: 1:10,000 at A4, GDA2020 MGA Zone 50

- Legend**
- Survey Area
 - Road
 - Mount Dove Survey**
 - Previous Quadrats
 - Vegetation Types**
 - 10
 - 14
 - C



APPENDIX N

Detailed Mapping of Vegetation Types and Other Areas of the Survey Area (Sheet 44)



This document and the information are subject to Terms and Conditions and Umwelt (Australia) Pty Ltd ("Umwelt") Copyright in the drawings, information and data recorded ("the information") is the property of Umwelt. This document and the information are solely for the use of the authorized recipient and this document may not be used, copied or reproduced in whole or part for any purpose other than that which it was supplied by Umwelt. Umwelt makes no representation, undertakes no duty and accepts no responsibility to any third party who may use or rely upon this document or the information.

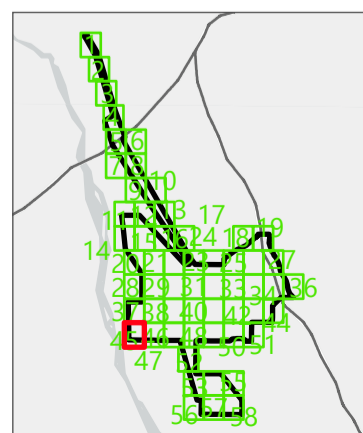
APPROVED FOR AND ON BEHALF OF Umwelt



Scale: 1:10,000 at A4, GDA2020 MGA Zone 50

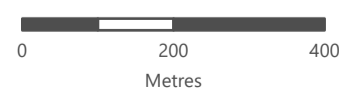
Legend

- | | |
|-------------------------|-------------------------|
| Survey Area | Vegetation Types |
| Road | 4 |
| 2022 Survey | 10 |
| Quadrat | 12 |
| Vegetation Mapping Note | C |
| Ecoscape Survey | |
| Previous Quadrats | |



APPENDIX N

Detailed Mapping of Vegetation Types and Other Areas of the Survey Area (Sheet 45)



This document and the information are subject to Terms and Conditions and Umwelt (Australia) Pty Ltd ("Umwelt") Copyright in the drawings, information and data recorded ("the information") is the property of Umwelt. This document and the information are solely for the use of the authorized recipient and this document may not be used, copied or reproduced in whole or part for any purpose other than that which it was supplied by Umwelt. Umwelt makes no representation, undertakes no duty and accepts no responsibility to any third party who may use or rely upon this document or the information.
APPROVED FOR AND ON BEHALF OF Umwelt



Scale: 1:10,000 at A4, GDA2020 MGA Zone 50

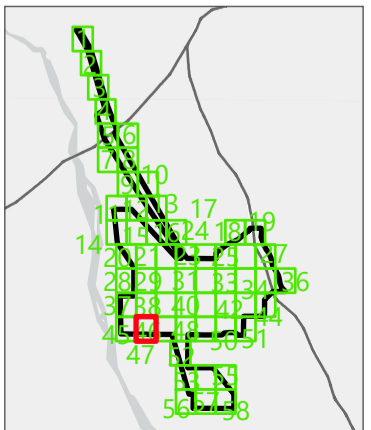
- Legend**
- Survey Area
 - Road
 - 2022 Survey**
 - Quadrat
 - Vegetation Mapping Note
 - Ecoscape Survey**
 - Previous Quadrats
 - Quadrats Resurveyed in 2022

Significant Flora (Umwelt 2022, 2024)

- AbspPr *Abutilon* sp. Pritzelianum (S. van Leeuwen 5095) (P3)

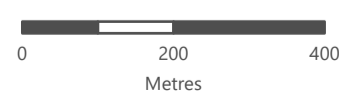
Vegetation Types

- 10
- 12
- C



APPENDIX N

Detailed Mapping of Vegetation Types and Other Areas of the Survey Area (Sheet 46)



This document and the information are subject to Terms and Conditions and Umwelt (Australia) Pty Ltd ("Umwelt") Copyright in the drawings, information and data recorded ("the information") is the property of Umwelt. This document and the information are solely for the use of the authorized recipient and this document may not be used, copied or reproduced in whole or part for any purpose other than that which it was supplied by Umwelt. Umwelt makes no representation, undertakes no duty and accepts no responsibility to any third party who may use or rely upon this document or the information.

APPROVED FOR AND ON BEHALF OF Umwelt