

IMPACT RECONCILIATION PROCEDURE

HEMI GOLD PROJECT

EPBC ACT: ASSESSMENT NUMBER: 2023:09556
WA PART IV EP ACT ASSESSMENT NUMBER: 2380



March 2025

IMPACT RECONCILIATION PROCEDURE
Hemi Gold Project
REVISION HISTORY



| Rev | Description | Date |
|-----|--|------------|
| 0 | Initial version | 01.11.2024 |
| 1 | Addressing EPA and public submission comments. | 21.03.2025 |

AUTHORISATIONS

| Task | Name | Company | Signature | Date |
|-------------|-----------------|-------------------------------|-----------|------------|
| Prepared By | Lidio S Junior | RPM Advisory Services Pty Ltd | | 21.03.2025 |
| | Jonathon Barker | De Grey Mining Ltd | | 21.03.2025 |
| Reviewed By | Sarah Thomas | De Grey Mining Ltd | | 24.03.2025 |
| Approved By | Glenn Jardine | De Grey Mining Ltd | | 25.03.2025 |

Prepared by



Prepared for



De Grey Mining Ltd owns or is responsible for the copyright in this document. All rights reserved. Neither the whole nor any part of this document may be reproduced, stored in, or transmitted in any form by any means (electronic, mechanical, reprographic, recording or otherwise) without the prior written consent of De Grey Mining Ltd

IMPACT RECONCILIATION PROCEDURE

Hemi Gold Project



TABLE OF CONTENTS

| | |
|--|-----------|
| 1. The Proposal and Condition Requirements | 1 |
| 1.1 The Proposal | 1 |
| 1.2 Ministerial Statement/Decision Note and Condition Requirements | 1 |
| 2. Procedure | 2 |
| 2.1 Identification of the Environmental Values Requiring Offset | 2 |
| 2.2 Method to Determine Impacts | 7 |
| 2.3 Impacts | 7 |
| 3. Reporting | 10 |
| 3.1 Frequency and Timing | 10 |
| 3.2 Impacts and Reconciliation | 11 |
| 4. References | 12 |

LIST OF TABLES

| | |
|--|----|
| Table 2-1 Environmental Values that require Offsets | 3 |
| Table 2-2 Vertebrate Fauna Habitats | 8 |
| Table 3-1 Proposed reporting period and frequency of the Impact Reconciliation Reports | 10 |

LIST OF FIGURES

| | |
|---------------------------------------|---|
| Figure 2-1 Vegetation Condition | 4 |
| Figure 2-2 Fauna Habitat Types | 5 |
| Figure 2-3 IBRA Subregions | 6 |

1. THE PROPOSAL AND CONDITION REQUIREMENTS

1.1 The Proposal

De Grey Mining Ltd (De Grey) is proposing to develop the Hemi Gold Project (Hemi, the Project), a greenfield gold mine located in the Pilbara region of Western Australia. The key components involve open-cut mining of gold ore from six deposits (Aquila, Brolga, Crow, Diucon, Eagle, and Falcon). The ore will be processed on-site at a rate of approximately 10 million tonnes per annum (mtpa) over an anticipated 13-year life of mine, with potential for extensions subject to future approvals. Processing waste (tailings) will be discharged to an Integrated Waste Landform (IWL) Tailings Storage Facility (TSF). The ore and pressure oxidation treatment process ensures the tailings are non-acid forming (NAF). Clearing is anticipated to commence in stages, subject to approvals.

This document describes the Impact Reconciliation Procedure (IRP) for the Project to support the assessment of the Proposal under Part IV of the *Environmental Protection Act 1986* (WA) (EP Act) and Part 9 of the *Environment Protection and Biodiversity Conservation Act 1999* (Cth) (EPBC Act).

1.2 Ministerial Statement/Decision Note and Condition Requirements

The Environmental Protection Authority (EPA) is assessing the Proposal under Part IV of the EP Act, with assessment number 2380. Additionally, the Department of Climate Change, Energy, the Environment and Water (DCCEE) is assessing the Project under Part 9 of the EPBC Act, with reference number 2023/09556. De Grey will incorporate Condition Requirements into this document upon issuance of the Ministerial Statement and/or Decision Notice.

De Grey anticipates that any approval to implement this Proposal will require contributions to the Pilbara Environmental Offset Fund (PEOF) to counterbalance the significant residual impacts. Moreover, De Grey expects that conditions may consider and reflect the offsets proposed in the IRP.

2. PROCEDURE

2.1 Identification of the Environmental Values Requiring Offset

The environmental values presented in the Proposal area and surroundings were identified throughout multiple baseline studies in accordance with State and Commonwealth guidelines. Baseline flora and vegetation surveys (Ecoscape, 2021; Umwelt, 2022, 2024) showed that most of the Development Envelope is in “excellent” or “very good” condition (Figure 2-1). However, some areas have been disturbed by exploration activities, pipelines, cattle grazing and trampling. De Grey will implement measures to ensure the activities have no significant long-term effects on identified priority species.

Surveys recorded one species, *Seringia exastia*, listed as Critically Endangered under the EPBC Act. *Seringia exastia*, a shrub endemic to Western Australia, was previously listed as Critically Endangered under the state's *Biodiversity Conservation Act 2016* (BC Act). However, a recent taxonomic review found it to be the same species as the common *Seringia elliptica*. This led Western Australia to delist the plant due to its widespread presence in the region.

While delisted by the state, *Seringia exastia* remains listed as Critically Endangered under the EPBC Act. This is likely due to the time it takes to update these designations. Surveys found two populations within the Development Envelope, but outside the Indicative Footprint Area. The Preliminary Documentation (DEG-EN-RP-0004) provides a more detailed analysis and assessment of this species.

Baseline terrestrial fauna surveys (Western Wildlife, 2023) identified six fauna habitats within the Development Envelope (Figure 2-2): Spinifex Sandplain, Sandplain Drainage, Sand Dune, Stony Hills, Major River, and Rocky Outcrops. Spinifex Sandplain, Sandplain Drainage, and Stony Hills habitats are widespread in the region. The Sand Dune habitat is uncommon and mostly confined to the Gregory Land System, a Priority 3 Ecological Community, which is excluded from the Development Envelope.

De Grey addressed the significant potential impacts of the Proposal by applying the mitigation hierarchy (details in the Preliminary Documentation (DEG-EN-RP-0004) and Referral Supporting Document (DEG-EN-RP-0009). Following the avoidance, mitigation and rehabilitation measures, the impact assessment carried out for the Proposal still indicates potentially significant residual impacts on:

- Critical habitat for Northern Quoll (*Dasyurus hallucatus*) - Endangered under EPBC Act and BC Act: Visual records were obtained along the Turner River and the Yule River.
- Critical habitat for Greater Bilby (*Macrotis lagotis*) – Vulnerable under EPBC Act and BC Act: Secondary signs (diggings) were found in one location within the Development Envelope. This species likely uses Spinifex Sandplain, Sandplain Drainage, and Sand Dune habitats. Sand Dune habitat has been excluded from the Development Envelope, while Spinifex Sandplain and Sandplain Drainage habitats are widespread and cover about 92% of the surveyed area (99% of the indicative disturbance footprint).
- Clearing of native vegetation in “very good” to “excellent” condition.

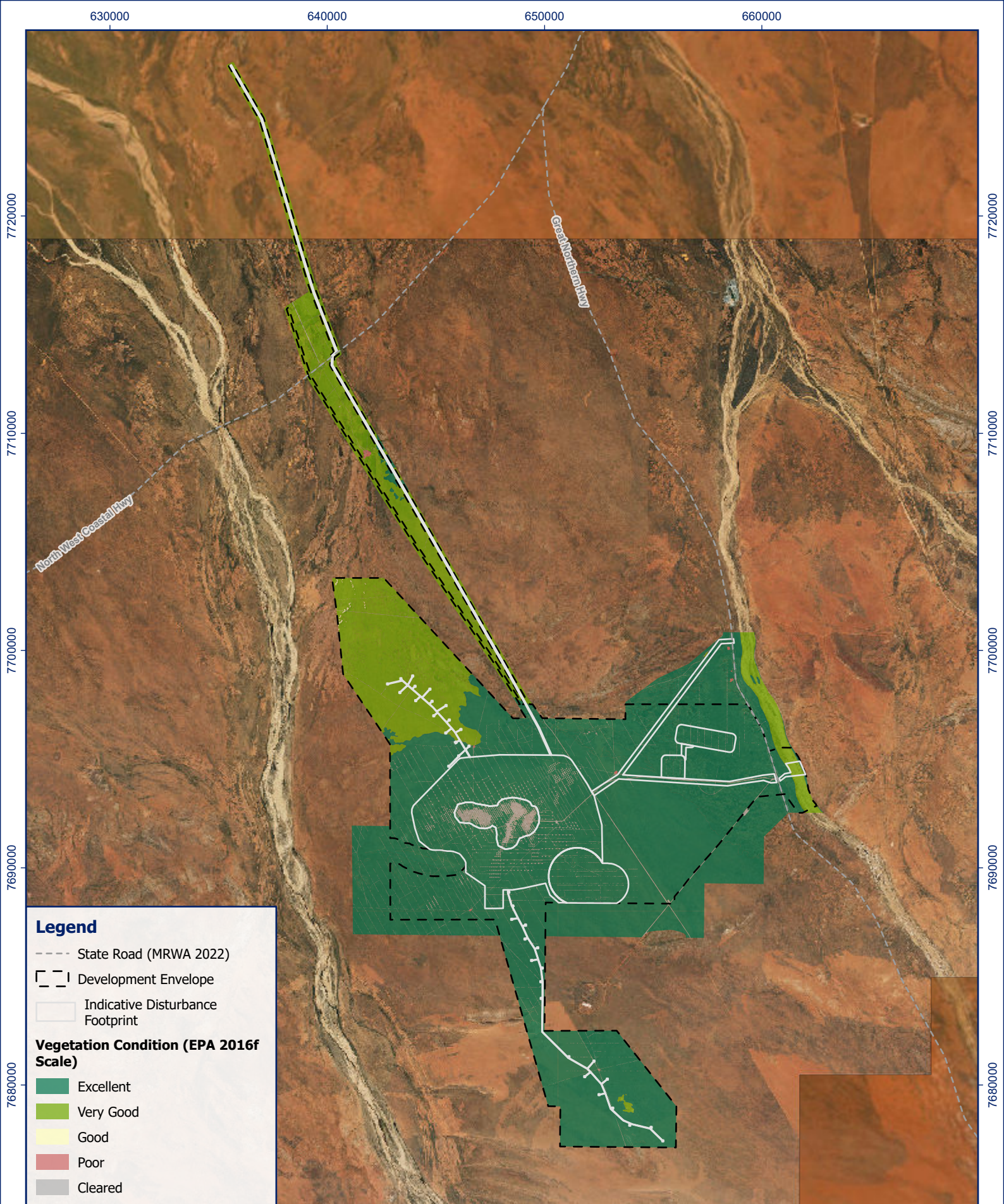
Table 2-1 summarises the environmental values that require offsets. Figure 2-3 presents the IBRA subregions over which the project lies.

Table 2-1 Environmental Values that require Offsets

| Environmental value | IBRA subregion | Offset rate (\$/ha) |
|---|----------------|---------------------|
| Clearing of no more than 10* ha of Major River habitat, considered critical habitat to the Northern Quoll (<i>Dasyurus hallucatus</i>). | Chichester | 3,306 |
| Clearing of no more than 41* ha of dispersal and foraging habitat (Sandplain Drainage, Sandplain Spinifex and Stony Hills habitat), considered critical habitat to the Northern Quoll (<i>Dasyurus hallucatus</i>). | Chichester | 3,306 |
| Clearing of no more than 5,100* ha of Spinifex Sandplain habitats, considered critical habitat of the Greater Bilby (<i>Macrotis lagotis</i>) | Chichester | 3,306 |
| Clearing of no more than 800 ha of Sandplain Drainage habitats, considered critical habitat of the Greater Bilby (<i>Macrotis lagotis</i>) | Roebourne | 3,306 |
| Clearing of 15* ha of native vegetation (Stony Hills habitat) in very good to excellent conditions. | Chichester | 932 |
| Clearing of 18* ha of native vegetation (Stony Hills habitat) in very good to excellent conditions. | Roebourne | 986 |

*Rounded up to the nearest whole number.

The offset rate per hectare for each Interim Biogeographic Regionalisation for Australia (IBRA) subregion has been sourced from the PEOF (DWER, 2023). It is subject to an annual adjustment to the Consumer Price Index (CPI).



Legend

- State Road (MRWA 2022)
- ▭ Development Envelope
- ▭ Indicative Disturbance Footprint

Vegetation Condition (EPA 2016f Scale)

- Excellent
- Very Good
- Good
- Poor
- Cleared

Projection: GDA2020 MGA Zone 50
 Scale: 1:220,000
 0 1.25 2.5 5 km

Created/Reviewed By: KM/EL
 Aerial: Esri, DigitalGlobe, GeoEye, i-cubed, USDA FSA, USGS, AEX, Getmapping, Aerogrid, IGN, IGP, swisstopo, and the GIS User Community

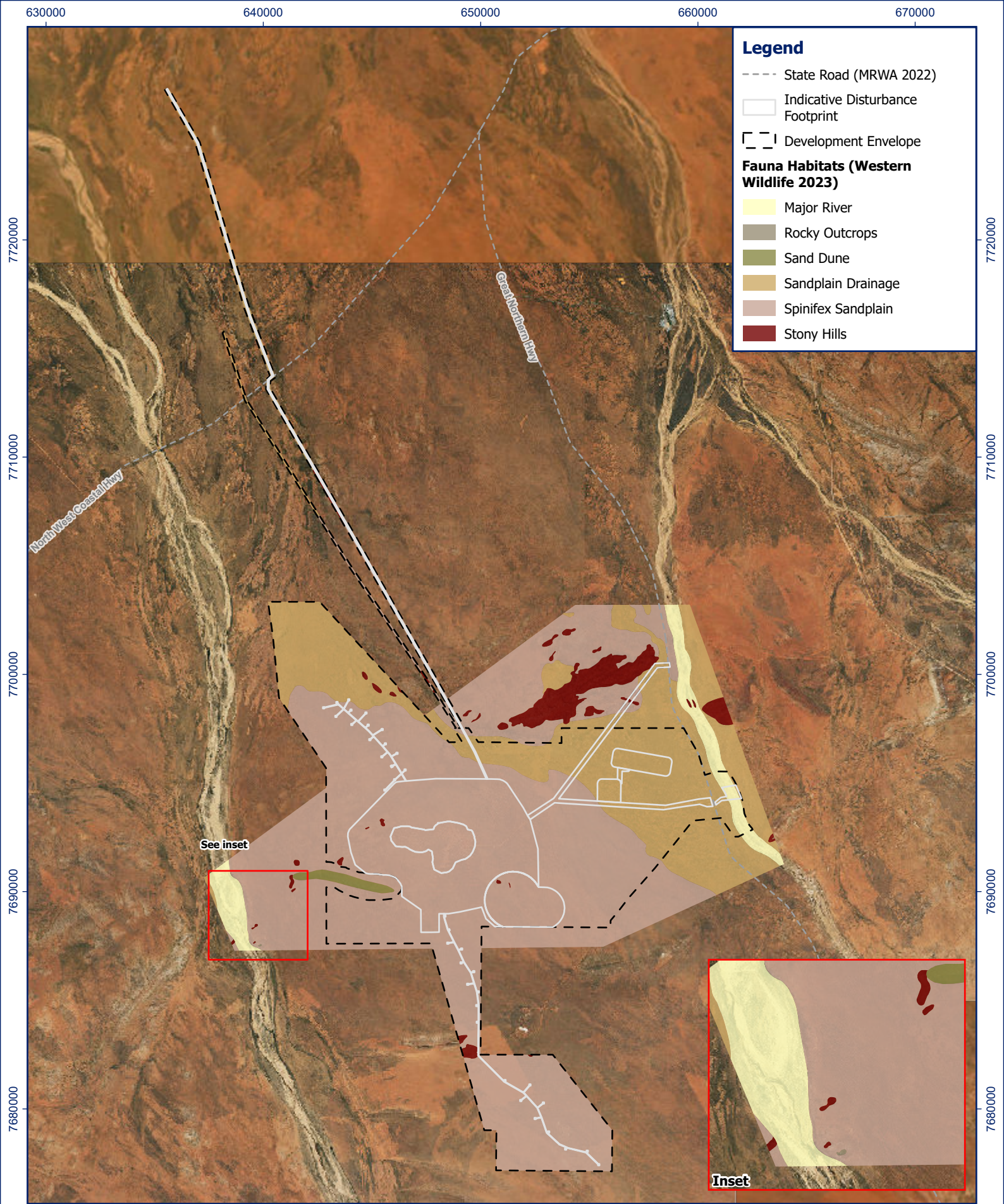
PROJECT **CLIENT**

Hemi Gold Project - Impact Reconciliation Program



Vegetation Condition

Figure 2-1 ADV-AU-00673 April 2024

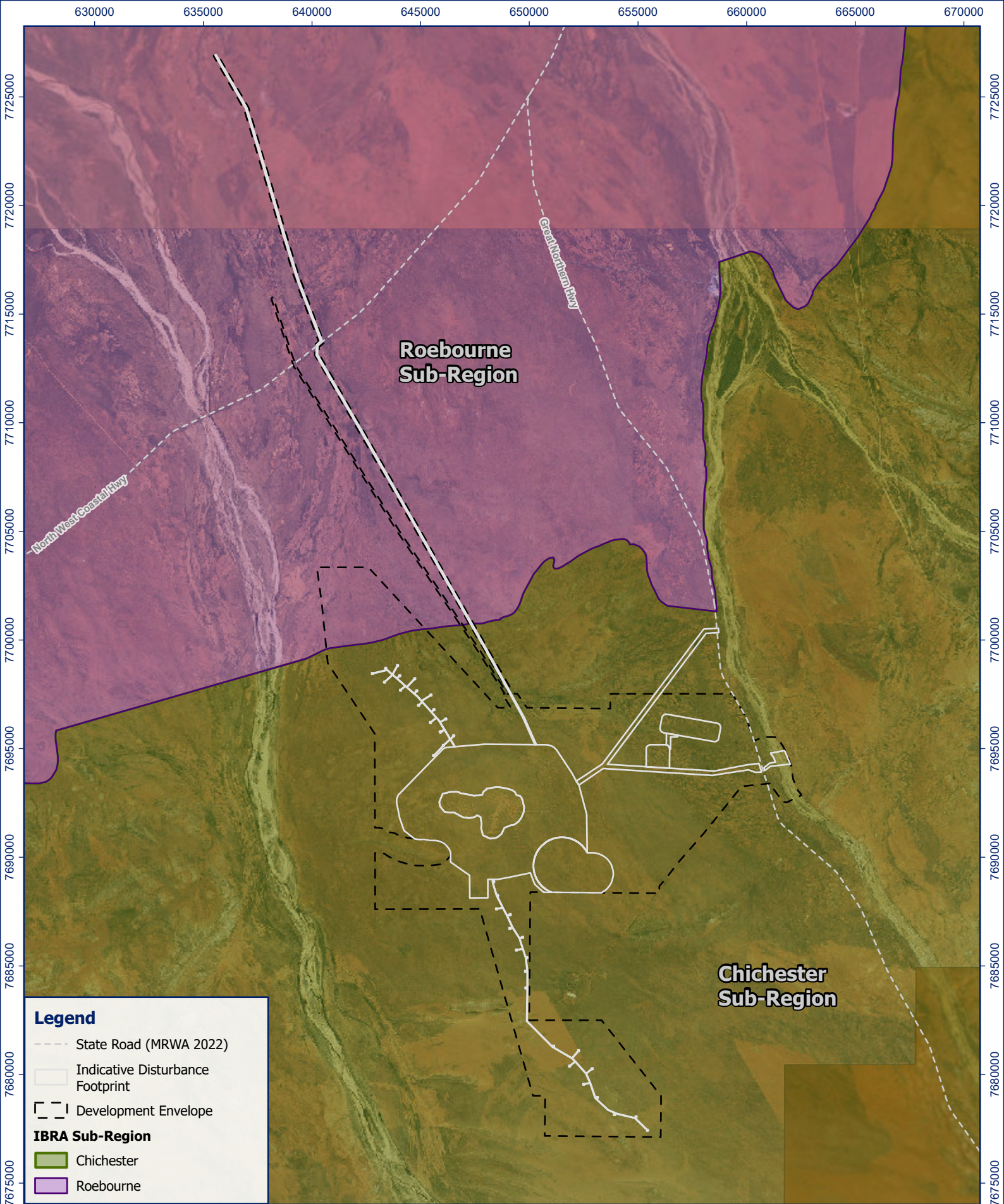


© 2022 Western Australian Land Information Authority, © 2022 Tengraph, © 2022 Main Roads Western Australia, © 2006 Geoscience Australia

Projection: GDA2020 MGA Zone 50
 Scale: 1:220,000
 0 1.25 2.5 5 km

Created/Reviewed By: KM/EL
 Aerial: Esri, DigitalGlobe, GeoEye, i-cubed, USDA FSA, USGS, AEX, Getmapping, Aerogrid, IGN, IGP, swisstopo, and the GIS User Community

| PROJECT | | CLIENT |
|---|--------------|--------|
| Hemi Gold Project - Impact Reconciliation Program | | |
| Fauna Habitat Types | | |
| Figure 2-2 | ADV-AU-00673 | |



Legend

- State Road (MRWA 2022)
- Indicative Disturbance Footprint
- ▭ Development Envelope

IBRA Sub-Region

- Chichester
- Roebourne

© 2022 Western Australian Land Information Authority, © 2022 Tengraph, © 2022 Main Roads Western Australia, © 2006 Geoscience Australia

Projection: GDA2020 MGA Zone 50

Scale: 1:220,000

0 1.25 2.5 5 km

Created/Reviewed By: KM/EL

Aerial: Esri, DigitalGlobe, GeoEye, i-cubed, USDA FSA, USGS, AEX, Getmapping, Aerogrid, IGN, IGP, swisstopo, and the GIS User Community

PROJECT

CLIENT

Hemi Gold Project - Impact Reconciliation Program



IBRA Sub-Regions



Figure 2-3

ADV-AU-00673

April 2024

2.2 Method to Determine Impacts

Flora and vegetation assessments and vertebrate fauna surveys were conducted in accordance with the EPA Technical Guidance (EPA, 2016, 2020). These studies provided the basis for the impact assessment conducted for all the key environmental factors and Matters of National Environmental Significance (MNES) that the Proposal could potentially impact.

De Grey will implement an internal procedure for monitoring and reporting on clearing throughout the project lifecycle. This procedure consists of:

- **Data Acquisition:** Throughout the year, De Grey will utilise an internal ground disturbance permit system to track areas approved for clearing. This data will provide a record of authorised activities.
- **Baseline and Change Detection:** High-resolution aerial imagery will be acquired close to the end of each financial year. This imagery will be compared to the baseline data (established prior to project commencement) to identify new cleared areas, as well as compared with the ground disturbance permit to ensure clearing boundaries are being effectively managed.
- **Impact Calculation:** The area of cleared vegetation will be calculated by overlaying the baseline data on the end-of-year aerial imagery. This comparison will allow for the precise determination of the actual impact footprint for each reporting period. The impacted area for each environmental value will be multiplied by the corresponding offset rate (Table 2-1) to determine the total offset liability. This rate will be confirmed under the Ministerial Statement/Decision Note.

This methodology ensures clear, repeatable, and auditable impact identification, adhering to the annual reporting requirements for offset liabilities. De Grey reserves the right to employ additional survey techniques, such as ground-truthing, for enhanced accuracy in specific situations.

2.3 Impacts

The development plan for Hemi requires an approach to managing native vegetation, limiting clearing to a maximum of 5,830 ha within a larger Development Envelope (22,194 ha). This program aims to balance Project operations and environmental conservation, with due consideration given to relevant environmental factors. The identified six fauna habitats in Table 2-2 present the key elements for each habitat type and the proposed indicative disturbance footprint.

The overall vegetation quality is rated as “very good” to “excellent”, and the vegetation types identified are common and likely to occur over relatively large regional areas. Notably, there are no Threatened Ecological Communities (TECs) or Environmentally Sensitive Areas (ESAs) within the Development Envelope.

Most disturbance and habitat loss is anticipated during the construction phase, with rehabilitation efforts expected to occur progressively whenever possible. Mine voids are planned to remain at closure, and the Gregory Land PEC system vegetation type has been deliberately excluded from the Project's scope.

Table 2-2 Vertebrate Fauna Habitats

| Fauna Habitats | Key Elements | Area inside Development Envelope (ha) | Area within Indicative Disturbance Footprint (ha) |
|--------------------|---|---------------------------------------|---|
| Spinifex Sandplain | <ul style="list-style-type: none"> Consolidated sands suitable for burrowing reptiles and mammals. | 15,809.8 (71.2%) | 5,037.1 (86.50%) |
| Sandplain Drainage | <ul style="list-style-type: none"> Consolidated sands suitable for burrowing reptiles and mammals. Claypans of various sizes that hold water and may be breeding. Habitat for frogs. Mature spinifex in some areas, where encouraged by water runoff and/or protection from fire. | 6,029.4 (27.2%) | 721.2 (12.38%) |
| Sand Dune | <ul style="list-style-type: none"> Loose flowing sands provide habitat for fossorial reptiles. | 0.0 | 0.0 |
| Stony Hills | <ul style="list-style-type: none"> Minor drainage lines (not mapped separately) provide dense habitats for birds. Small stones suitable for Western Pebble-mound Mouse. Minor rocky outcrops provide shelter for rock-dwelling reptiles. | 172.9 (0.8%) | 33.3 (0.57 %) |
| Major River | <ul style="list-style-type: none"> Likely to function as a corridor for fauna movement. Waterholes provide habitat for Bathing and drinking and breeding habitat for frogs. Tree hollows for arboreal reptiles, Bats and hollow-nesting birds. Leaf litter accumulations and woody debris in the creek bed. Provides habitat for reptiles. | 181.2 (0.8%) | 34.9 (0.60%) |
| Rocky Outcrops | <ul style="list-style-type: none"> Outcropping rocky areas, boulders, overhangs and rock crevices provide shelter for reptiles and mammals (no large caves present). | 0.0 | 0.0 |
| Total | | 22,194.0* | 5,827.0* |

**Rounded up to the nearest whole number.*

The Yule River and Turner River areas are considered critical habitats for the Northern Quoll, the Grey Falcon and the Pilbara Olive Python, noting that only the Northern Quoll has been recorded from these habitats. Rocky Outcrops areas are considered critical habitats for the Northern Quoll. Consequently, De Grey has applied the following controls to minimise impacts on these species:

- Exclusion of the Yule River and associated foraging habitat from the Development Envelope.
- Exclusion of all Rocky Outcrops habitat from the Development Envelope.
- Limited disturbance to 10 ha of Major River habitat (along Turner River) to the minimum required for the dewatering pipeline corridor and outfall to comprise less than 2.5 % of the mapped extent of the Major River habitats of the Yule and Turner Rivers.
- Large, hollow forming trees suitable for the Northern Quoll will be avoided from clearing within the Major River habitat, where possible.

State and Federal Guidelines do not contain a clear description or definition of critical habitat for the Greater Bilby. However, due to habitat characteristics and occurrence records, it is assumed that Sand Dune, Sandplain Drainage and Spinifex Sandplain may be considered as critical habitats for the species. Therefore, De Grey has applied the following controls to minimise impacts on the Greater Bilby:

IMPACT RECONCILIATION PROCEDURE

Hemi Gold Project



- Exclusion of the Sand Dune habitat from the Development Envelope.
- Clearing of critical habitat to Greater Bilby limited to up to 5,100 and 800 ha of Spinifex Sandplain and Sandplain Drainage habitat within the Development Envelope.
- Implementation of pre-clearance surveys prior to land disturbance and, if required, relocating Greater Bilby individuals by qualified personnel.

De Grey is committed to implementing a Conservation Significant Species Management Plan (CSSMP) (DEG-EN-RP-0002) and Environmental Management Plan (EMP) (DEG-EN-RP-0007), which will establish all the management measures to minimise the direct and indirect impacts on these species.

Finally, within the 5,830 ha of clearing required for the Proposal, and apart from the critical habitat described above, the impact to an additional 33 ha of native vegetation in very good to excellent condition is considered a significant residual impact for the Proposal as per the EPAs cumulative impacts of developments in the Pilbara Region (EPA, 2014) and is proposed to be offset.

3. REPORTING

3.1 Frequency and Timing

The clearing is planned to commence in 2025 in incremental stages. An Impact Reconciliation Report (IRR) outlining the disturbance undertaken in the Proposal will be completed biennially. The IRR will provide the location and spatial extent of the clearing undertaken over critical fauna habitat and relevant vegetation conditions to support the calculations for the offset payment required. Once the Ministerial Statement and/or Decision Note is provided, the first IRR will be completed by the end of the second financial year, comprising a period of less than two years. Then, the following biennial reports will cover 24 months (Table 3-1).

Table 3-1 Proposed reporting period and frequency of the Impact Reconciliation Reports

| Biennial period | Action | Timing |
|-----------------|---|---|
| | Ministerial Statement issued | June 2025 |
| | Impacts commenced | October 2025 |
| Period 1* | First biennial reporting period | October 2025 to 30 June 2027 |
| | Aerial survey/ground-truthing | July 2027 |
| | Impact Reconciliation Report submitted to DWER. | 31 October 2027 |
| | Submission of evidence of payment into PEOF to DCCEEW | Within 10 business days of receipt of payment from PEOF |
| Period 2 | Second biennial reporting period | 1 July 2027 to 30 June 2029 |
| | Aerial survey/ground truthing | July 2029 |
| | Impact Reconciliation Report submitted to DWER. | 31 October 2027 |
| | Submission of evidence of payment into PEOF to DCCEEW | Within 10 business days of receipt of payment from PEOF |
| Period 3 | Third biennial reporting period | 1 July 2029 to 30 July 2031 |
| | Aerial survey/ground truthing | July 2031 |
| | Impact Reconciliation Report submitted to DWER. | 31 October 2031 |
| | Submission of evidence of payment into PEOF to DCCEEW | Within 10 business days of receipt of payment from PEOF |
| Period 4 | Fourth biennial reporting period | 1 July 2031 to 30 June 2033 |
| | Aerial survey/ground truthing | July 2033 |
| | Impact Reconciliation Report submitted to DWER. | 31 October 2033 |
| | Submission of evidence of payment into PEOF to DCCEEW | Within 10 business days of receipt of payment from PEOF |
| Period 5 | Fifth biennial reporting period | 1 July 2033 to 30 June 2035 |
| | Aerial survey/ground truthing | July 2035 |
| | Impact Reconciliation Report submitted to DWER. | 31 October 2035 |
| | Submission of evidence of payment into PEOF to DCCEEW | Within 10 business days of receipt of payment from PEOF |
| Period 6 | Sixth biennial reporting period | 1 July 2035 to 30 June 2037 |
| | Aerial survey/ground truthing | July 2037 |
| | Impact Reconciliation Report submitted to DWER. | 31 October 2037 |

IMPACT RECONCILIATION PROCEDURE

Hemi Gold Project



| Biennial period | Action | Timing |
|-----------------|---|---|
| | Submission of evidence of payment into PEOF to DCCEEW | Within 10 business days of receipt of payment from PEOF |
| Period 7 | Seventh biennial reporting period | 1 July 2037 to 30 June 2039 |
| | Aerial survey/ground truthing | July 2039 |
| | Impact Reconciliation Report submitted to DWER. | 31 October 2039 |
| | Submission of evidence of payment into PEOF to DCCEEW | Within 10 business days of receipt of payment from PEOF |
| Final Period | Final reporting period | 1 July 2039 to Final reporting date |
| | Aerial survey/ground truthing | 30 days following the final reporting day |
| | Final Impact Reconciliation Report submitted to DWER. | October following the reporting date. |
| | Final submission of evidence of payment into PEOF to DCCEEW | Within 10 business days of receipt of payment from PEOF |

**Period 1 is less than two years to align with a financial year reporting period.*

3.2 Impacts and Reconciliation

Following the construction phase of the Proposal, the area of cleared habitat will be assessed against the baseline area using GIS technology. The IRR will be issued within 24 months of the Ministerial Statement's issue.

4. REFERENCES

- DWER. (2023, August 31). *Program: Pilbara Environmental Offsets Fund*. Department of Water and Environmental Regulation.
- Ecoscape. (2021). *Draft Report - Mallina Gold Project - Hemi Flora and Vegetation Survey*.
- EPA. (2014). *Cumulative environmental impacts of development in the Pilbara region: Advice of the Environmental Protection Authority to the Minister for Environment under Section 16(e) of the Environmental Protection Act 1986*.
- EPA. (2016). *Technical Guidance - Flora and Vegetation Surveys for Environmental Impact Assessment*.
- EPA. (2020). *Technical Guidance: Terrestrial vertebrate fauna surveys for environmental impact assessment*. Environmental Protection Authority, Government of Western Australia.
- Umwelt. (2022). *RE: Status of Seringia exastia at Hemi*.
- Umwelt. (2024). *Hemi Gold Deposit: Baseline Flora and Vegetation Assessment*.
- Western Wildlife. (2023). *Hemi Gold Project: Detailed Vertebrate Fauna Survey 2021 - 2022*.