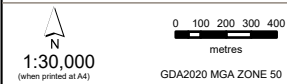


**AECOM** Delivering a better world

PROJECT ID 60750944 CREATED BY WALLINGTONM  
 DATE MODIFIED 09 APR 2025 APPROVED BY S.MAASS

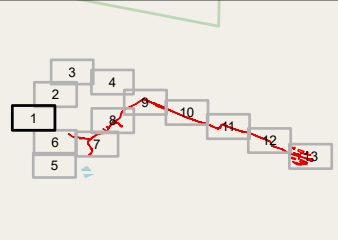


DATA SOURCES: Base Data: (c) Based on information provided by and with the permission of the Western Australian Land Information Authority trading as Landgate (2010).  
 Service Layer Credits: World Imagery: Source: Esri, Maxar, Earthstar Geographics, and the GIS User Community; OpenStreetMap: Map data © OpenStreetMap contributors, Microsoft, Facebook, Inc. and its affiliates, Esri Community Maps contributors, Map layer by Esri, WMS.

**LEGEND**  
 DBCA/TPFL

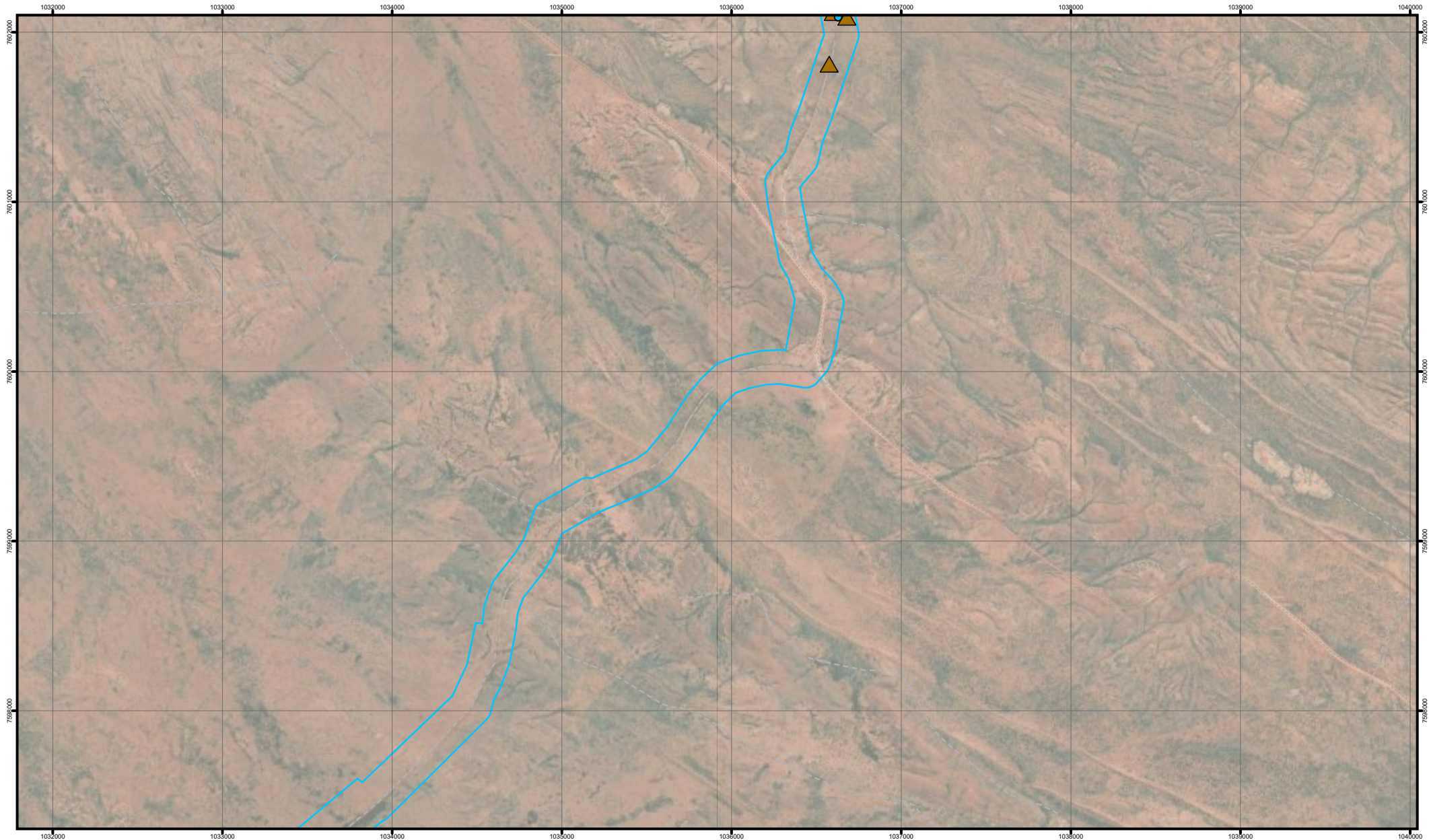
○ *Goodenia hartiana*

▭ JBS&G Australia Pty Ltd, 2021.  
 Detailed Flora and Vegetation  
 Survey - Havieron Infrastructure  
 Corridor.



**Survey effort for *Goodenia hartiana***

**GREATLAND PTY LTD**  
**ENVIRONMENTAL REVIEW**  
**DOCUMENT - TELFER**



**AECOM** Delivering a better world

PROJECT ID 60750944 CREATED BY WALLINGTONM  
 DATE MODIFIED 09 APR 2025 APPROVED BY S.MAASS

N  
 1:30,000  
 (when printed at A4)

0 100 200 300 400 metres  
 GDA2020 MGA ZONE 50

DATA SOURCES: Base Data: (c) Based on information provided by and with the permission of the Western Australian Land Information Authority trading as Landgate (2010).  
 Service Layer Credits: World Imagery: Earthstar Geographics, OpenStreetMap: Map data © OpenStreetMap contributors, Microsoft, Facebook, Inc. and its affiliates, Esri Community Maps contributors, Map layer by Esri, WMS.

**LEGEND**

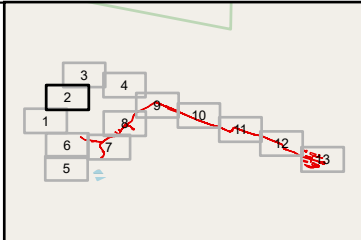
Ecoscape Australia Pty Ltd (2024)

▲ *Goodenia hartiana*

JBS&G Australia Pty Ltd (2021)

● *Goodenia hartiana*

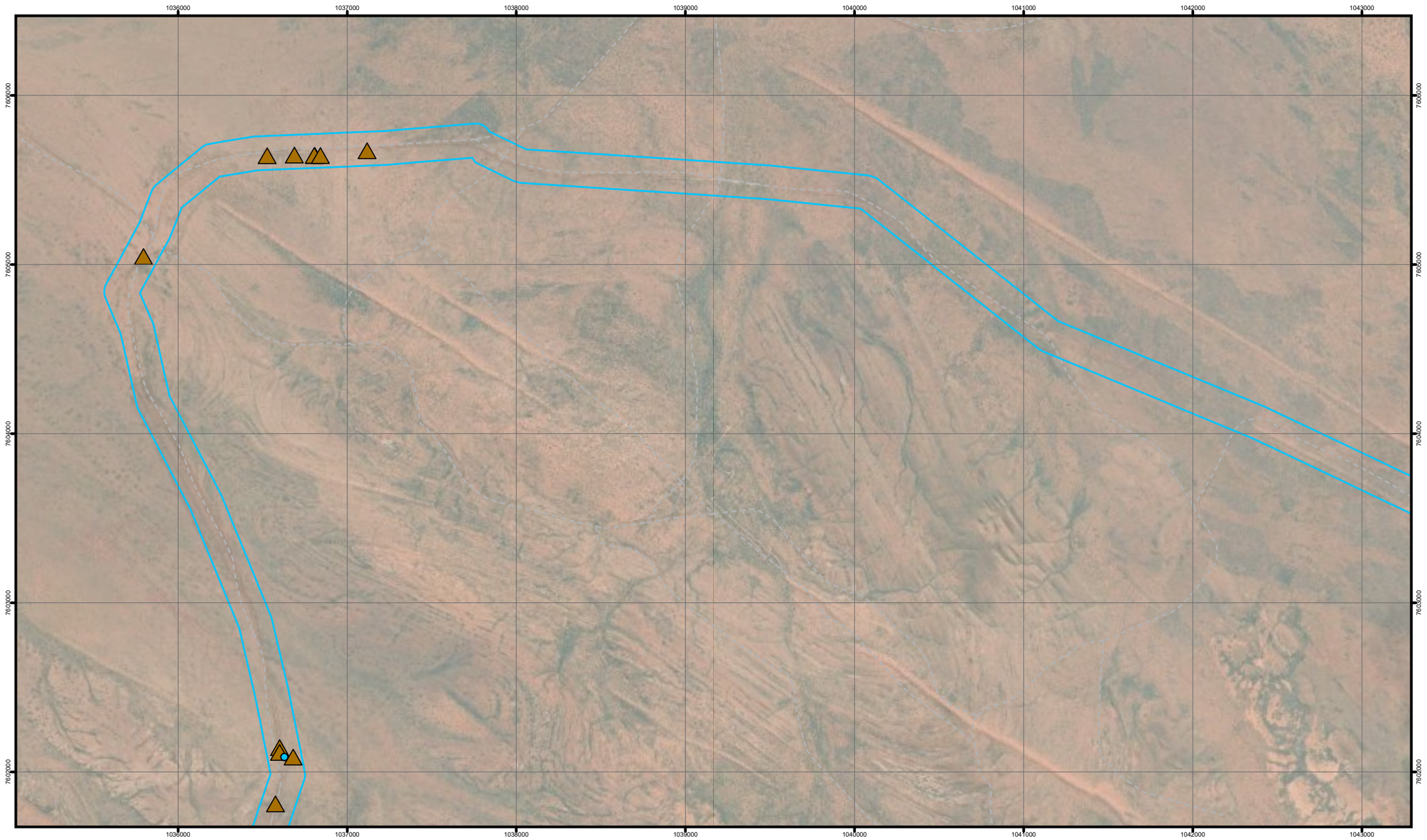
JBS&G Australia Pty Ltd, 2021.  
 Detailed Flora and Vegetation Survey - Havieron Infrastructure Corridor.



**Survey effort for *Goodenia hartiana***

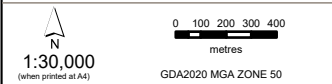
**GREATLAND PTY LTD**

**ENVIRONMENTAL REVIEW DOCUMENT - TELFER**



**AECOM** Delivering a better world

PROJECT ID 60750944 CREATED BY WALLINGTONM  
 DATE MODIFIED 09 APR 2025 APPROVED BY S.MAASS



DATA SOURCES: Base Data: (c) Based on information provided by and with the permission of the Western Australian Land Information Authority trading as Landgate (2010).  
 Service Layer Credits: World Imagery: Source: Esri, Maxar, Earthstar Geographics, and the GIS User Community; OpenStreetMap: Map data © OpenStreetMap contributors, Microsoft, Facebook, Inc. and its affiliates, Esri Community Maps contributors, Map layer by Esri, WMS.

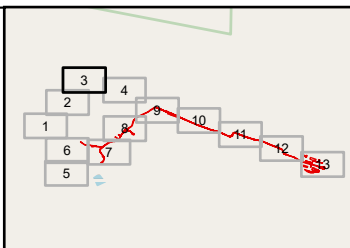
**LEGEND**

Ecoscape Australia Pty Ltd (2024)

*Goodenia hartiana*

JBS&G Australia Pty Ltd (2021)

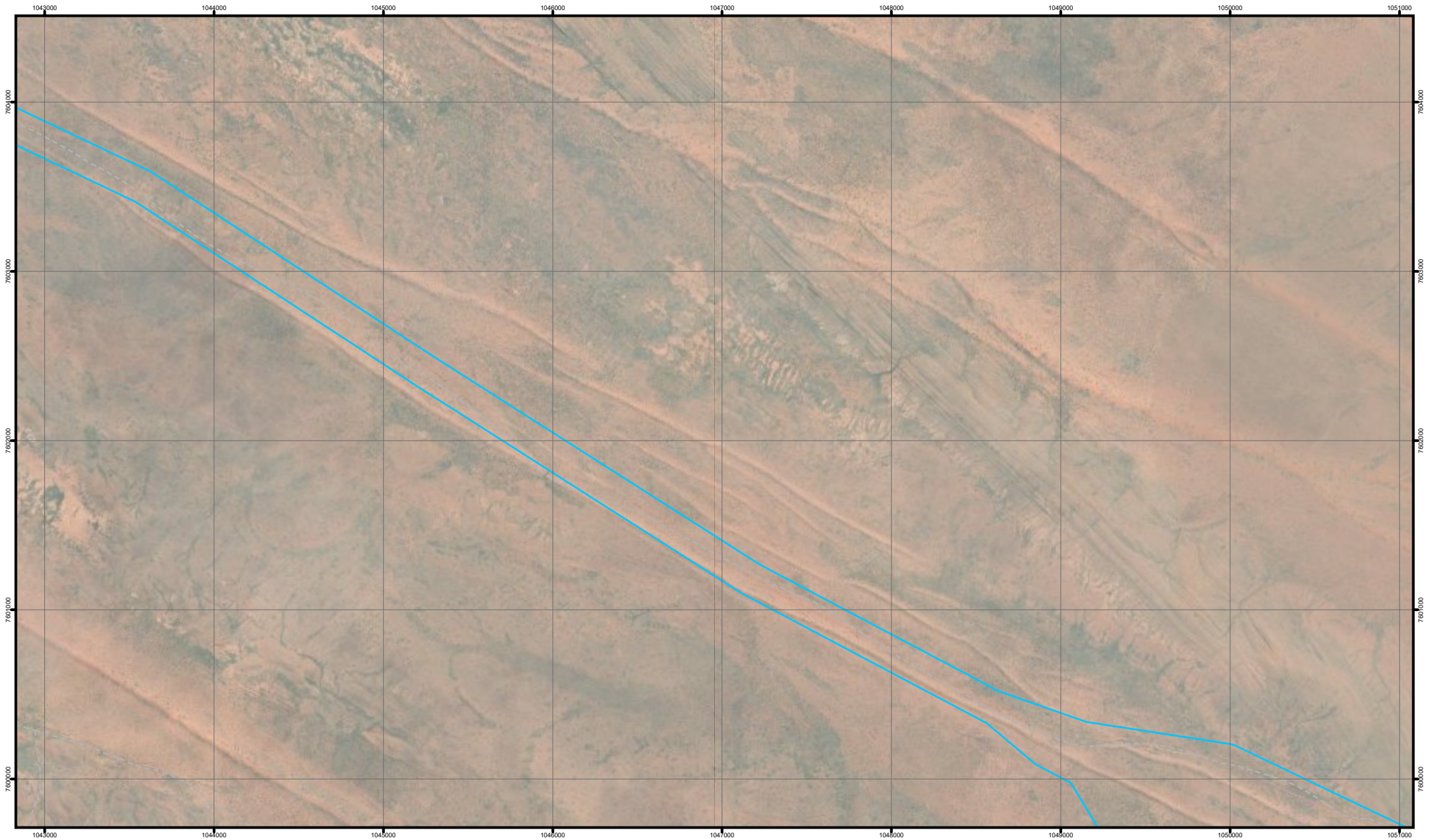
*Goodenia hartiana*  
 JBS&G Australia Pty Ltd, 2021.  
 Detailed Flora and Vegetation  
 Survey - Havieron Infrastructure  
 Corridor.



**Survey effort for *Goodenia hartiana***

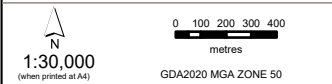
**GREATLAND PTY LTD**

**ENVIRONMENTAL REVIEW  
 DOCUMENT - TELFER**



**AECOM** Delivering a better world

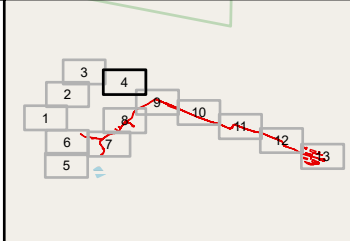
PROJECT ID 60750944 CREATED BY WALLINGTONM  
 DATE MODIFIED 09 APR 2025 APPROVED BY S.MAASS



DATA SOURCES: Base Data: (c) Based on information provided by and with the permission of the Western Australian Land Information Authority trading as Landgate (2010).  
 Service Layer Credits: World Imagery: Earthstar Geographics, OpenStreetMap; Map data © OpenStreetMap contributors, Microsoft, Facebook, Inc. and its affiliates; Esri Community Maps contributors; Map layer by Esri/WMS.

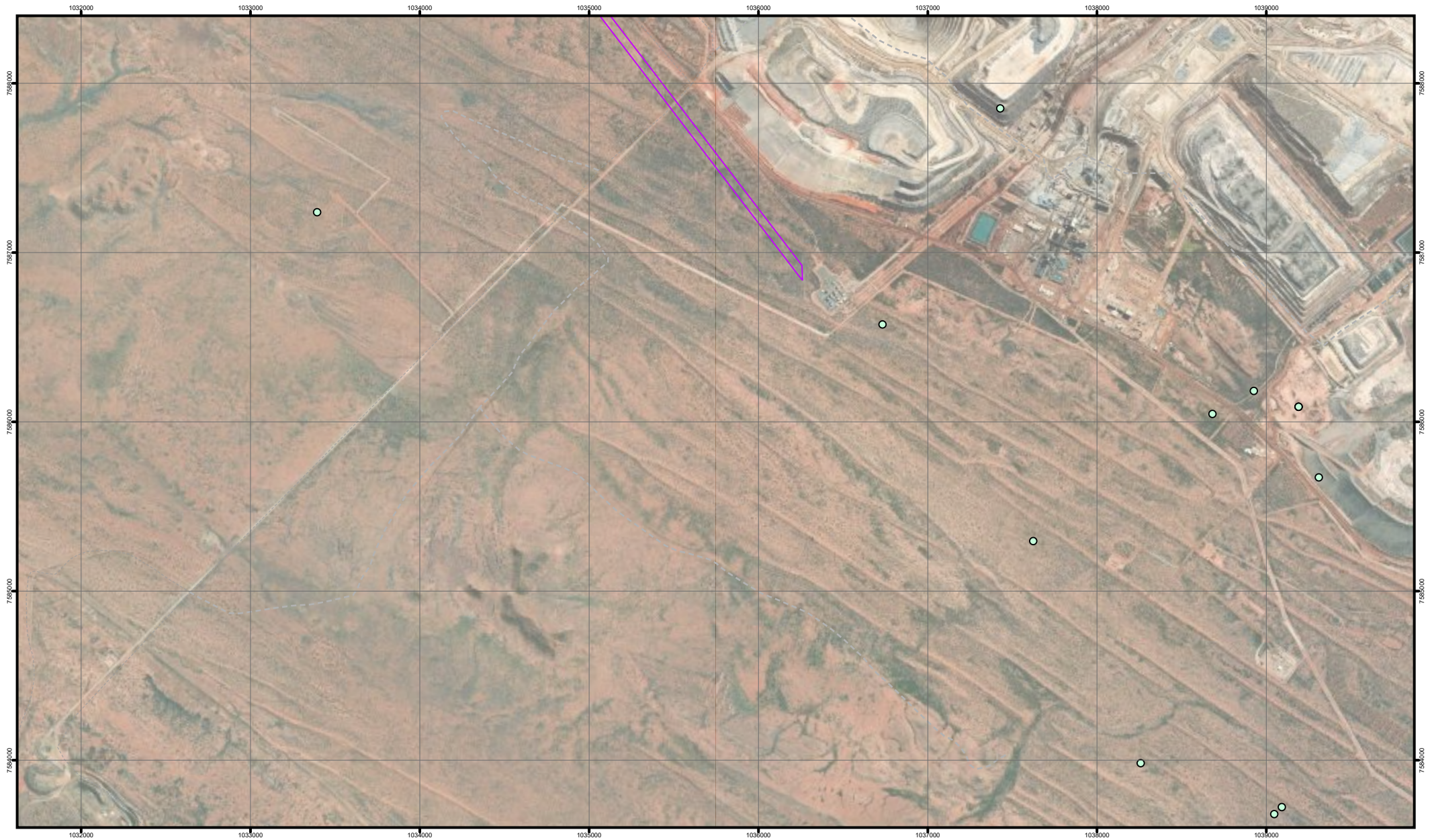
**LEGEND**

- JBS&G Australia Pty Ltd, 2021.
- Detailed Flora and Vegetation Survey - Havieron Infrastructure Corridor.



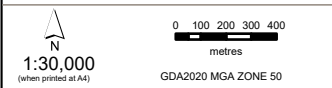
**Survey effort for *Goodenia hartiana***

**GREATLAND PTY LTD**  
**ENVIRONMENTAL REVIEW DOCUMENT - TELFER**



**AECOM** Delivering a better world

PROJECT ID 60750944 CREATED BY WALLINGTONM  
 DATE MODIFIED 09 APR 2025 APPROVED BY S.MAASS



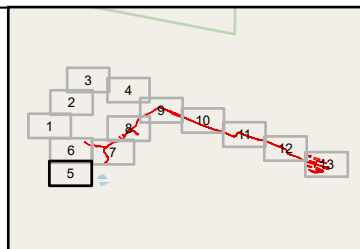
DATA SOURCES: Base Data: (c) Based on information provided by and with the permission of the Western Australian Land Information Authority trading as Landgate (2010).  
 Service Layer Credits: World Imagery: Earthstar Geographics, OpenStreetMap; Map data © OpenStreetMap contributors, Microsoft, Facebook, Inc. and its affiliates; Esri; Community Maps; contributors; Map layer by Esri; WMS.

**LEGEND**

DBCA/TPFL

○ *Goodenia hartiana*

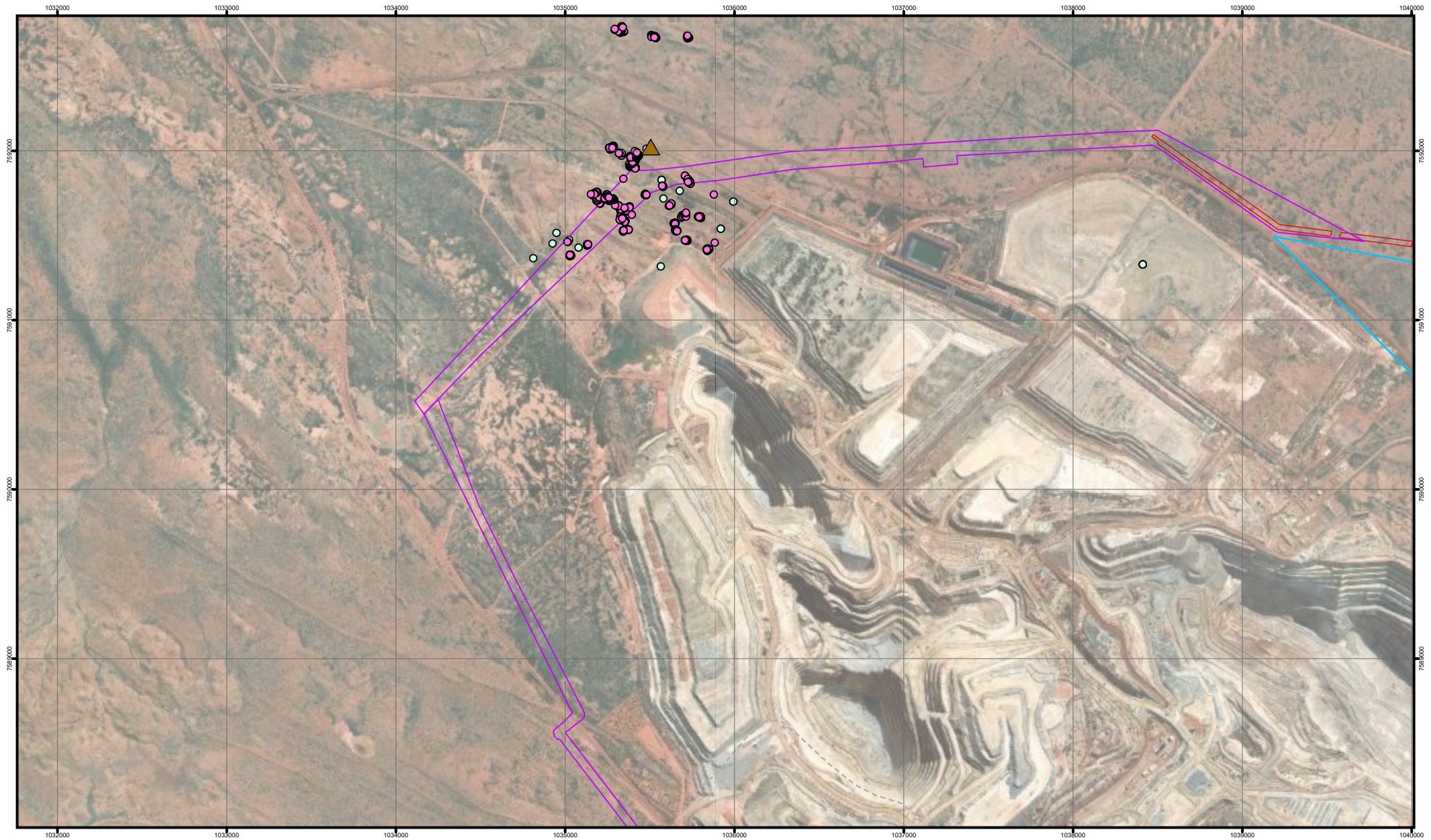
▭ Spectrum Ecology (2022) Telfer 2022  
*Goodenia hartiana* Targeted  
 Assessment. Unpublished Report for  
 Newcrest.



**Survey effort for *Goodenia hartiana***

**GREATLAND PTY LTD**

**ENVIRONMENTAL REVIEW  
 DOCUMENT - TELFER**

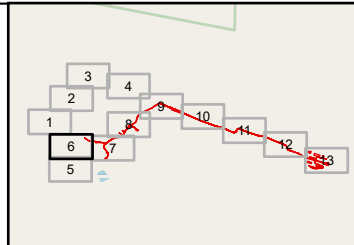


**LEGEND**

- Development Envelope (v2)
- DBCA/TPFL
- *Goodenia hartiana*  
Ecoscape Australia Pty Ltd (2024)
- ▲ *Goodenia hartiana*

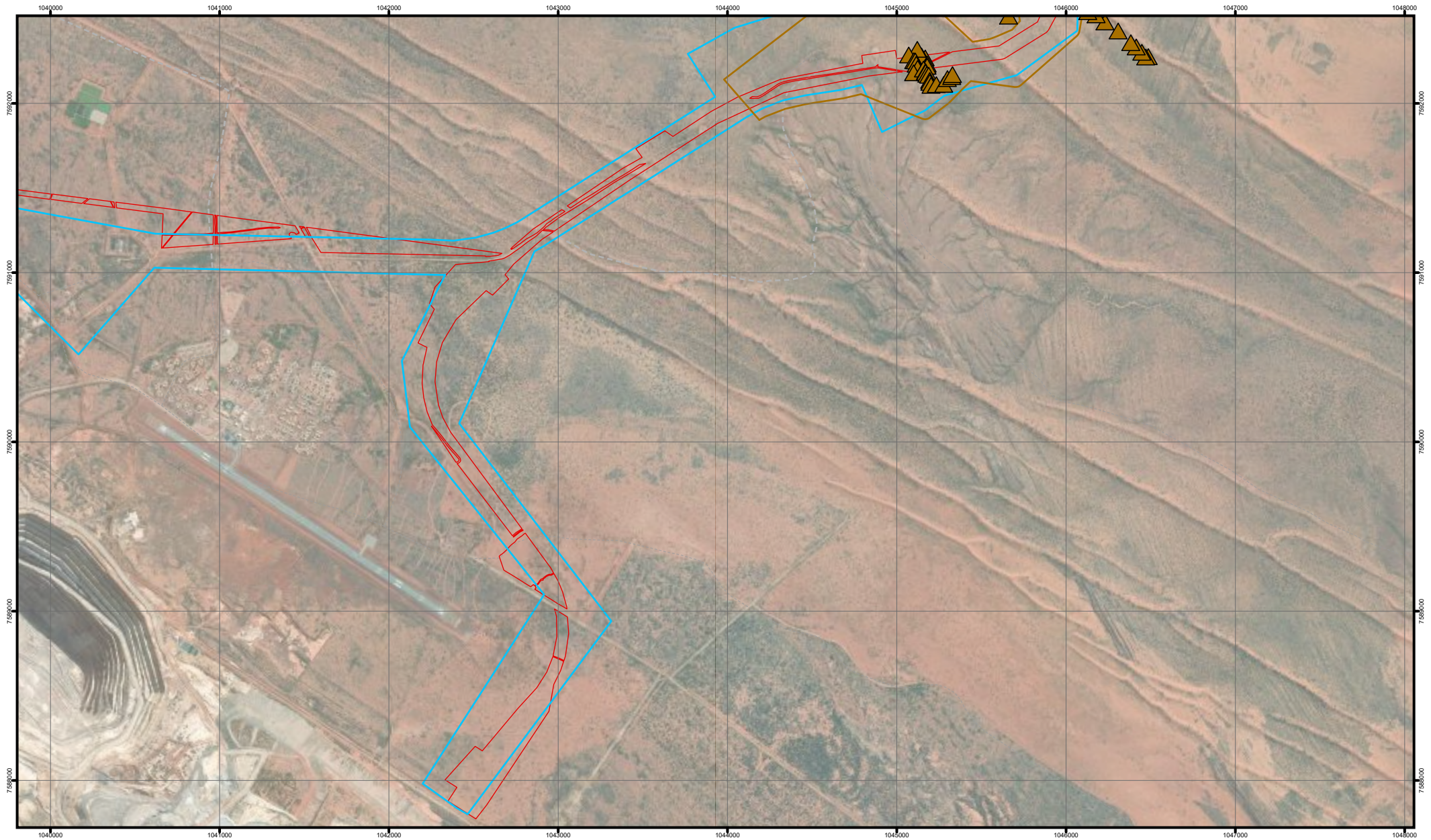
JBS&G Australia Pty Ltd, 2021.  
Detailed Flora and Vegetation  
Survey - Havieron Infrastructure  
Corridor.

- *Goodenia hartiana*  
Spectrum Ecology (2022)
- Spectrum Ecology (2022) Telfer  
2022 *Goodenia hartiana* Targeted  
Assessment. Unpublished Report  
for Newcrest.



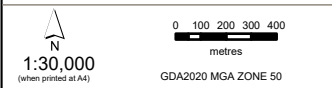
**Survey effort for *Goodenia hartiana***

**GREATLAND PTY LTD**  
  
**ENVIRONMENTAL REVIEW  
 DOCUMENT - TELFER**



**AECOM** Delivering a better world

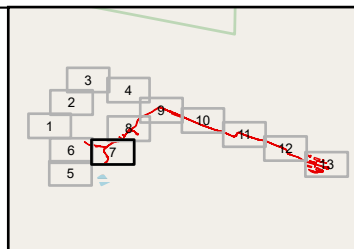
PROJECT ID 60750944 CREATED BY WALLINGTONM  
 DATE MODIFIED 09 APR 2025 APPROVED BY S.MAASS



DATA SOURCES: Base Data: (c) Based on information provided by and with the permission of the Western Australian Land Information Authority trading as Landgate (2010).  
 Service Layer Credits: World Imagery: Source: Esri, Maxar, Earthstar Geographics, and the GIS User Community; OpenStreetMap: Map data © OpenStreetMap contributors, Microsoft, Facebook, Inc. and its affiliates, Esri Community Maps contributors, Map layer by Esri, WMS.

**LEGEND**

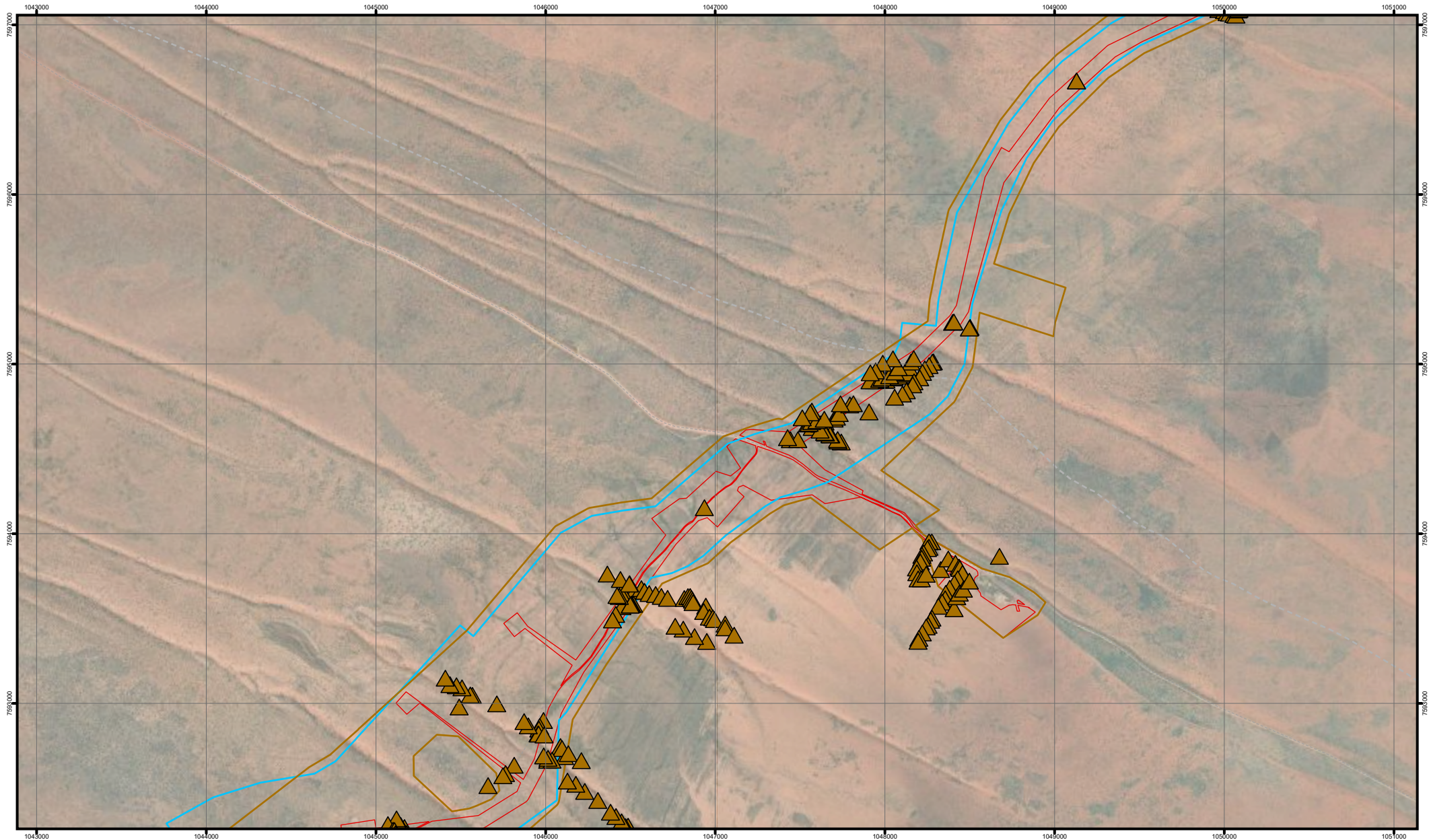
- Development Envelope (v2)
- JBS&G Australia Pty Ltd, 2021. Detailed Flora and Vegetation Survey - Havieron Infrastructure Corridor.
- ▲ *Goodenia hartiana*
- Ecoscape Australia Pty Ltd (2024). Havieron Mine and Service Infrastructure Corridor Targeted Flora Survey.



**Survey effort for *Goodenia hartiana***

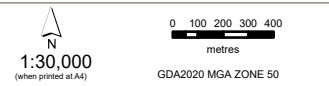
**GREATLAND PTY LTD**

**ENVIRONMENTAL REVIEW DOCUMENT - TELFER**



**AECOM** Delivering a better world

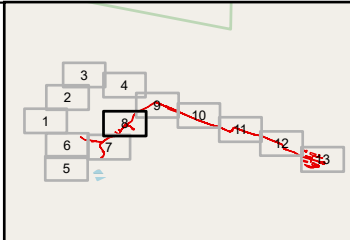
PROJECT ID 60750944 CREATED BY WALLINGTONM  
 DATE MODIFIED 09 APR 2025 APPROVED BY S.MAASS



DATA SOURCES: Base Data: (c) Based on information provided by and with the permission of the Western Australian Land Information Authority trading as Landgate (2010).  
 Service Layer Credits: World Imagery: Source: Esri, Maxar, Earthstar Geographics, and the GIS User Community; OpenStreetMap: Map data © OpenStreetMap contributors, Microsoft, Facebook, Inc. and its affiliates, Esri Community Maps contributors, Map layer by Esri, WMS.

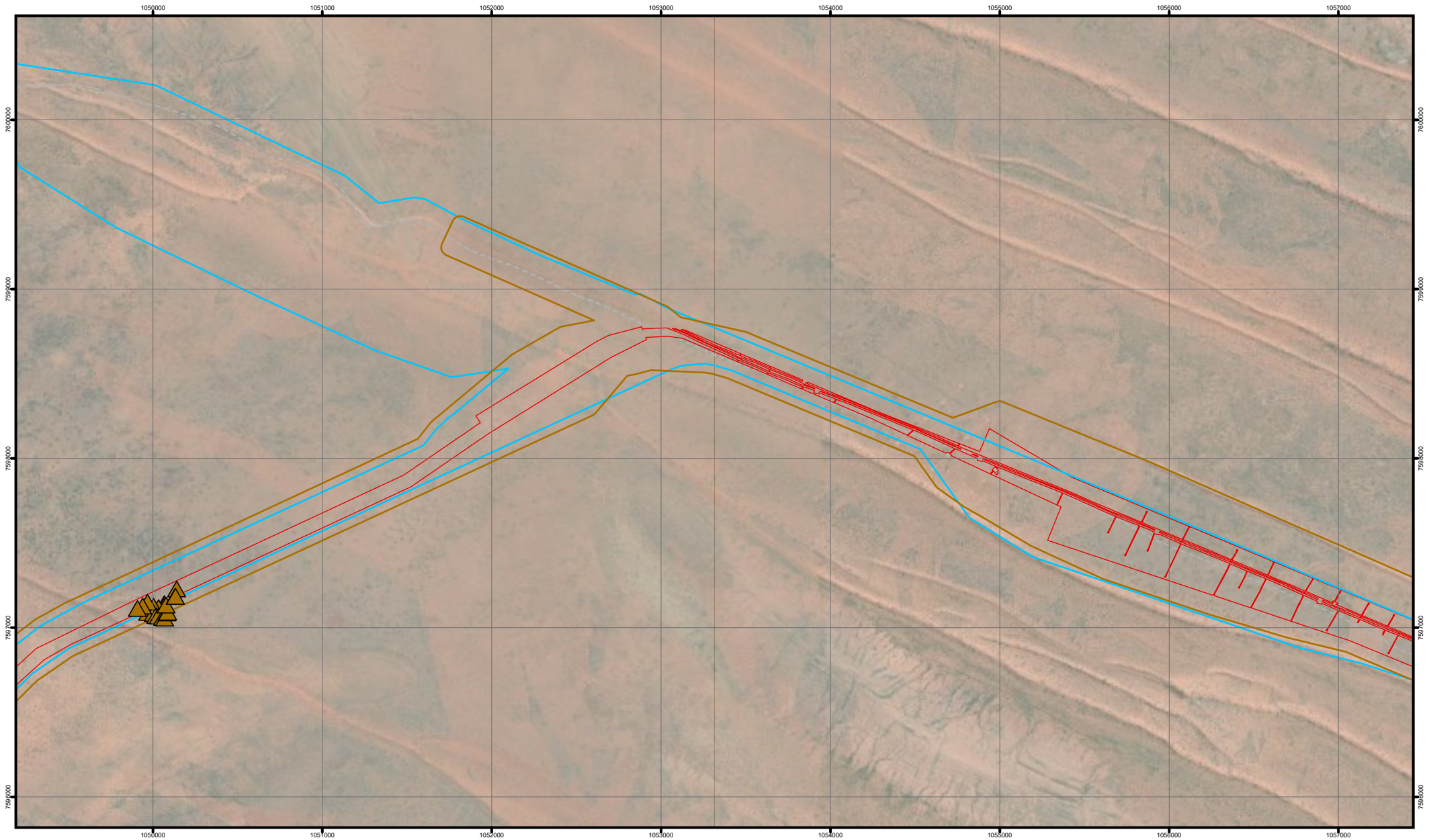
**LEGEND**

- Development Envelope (v2)
- JBS&G Australia Pty Ltd, 2021. Detailed Flora and Vegetation Survey - Haveron Infrastructure Corridor.
- Ecoscape Australia Pty Ltd (2024) Infrastructure Corridor Targeted Flora Survey.
- ▲ *Goodenia hartiana*
- Ecoscape Australia Pty Ltd (2024). Haveron Mine and Service



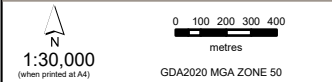
**Survey effort for *Goodenia hartiana***

**GREATLAND PTY LTD**  
**ENVIRONMENTAL REVIEW DOCUMENT - TELFER**



**AECOM** Delivering a better world

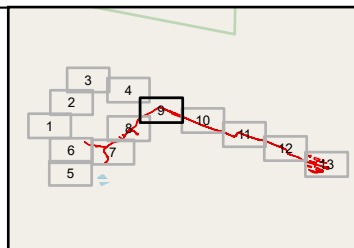
PROJECT ID 60750944 CREATED BY WALLINGTONM  
 DATE MODIFIED 09 APR 2025 APPROVED BY S.MAASS



DATA SOURCES: Base Data: (c) Based on information provided by and with the permission of the Western Australian Land Information Authority trading as Landgate (2010).  
 Service Layer Credits: World Imagery: Source: Esri, Maxar, Earthstar Geographics, and the GIS User Community; OpenStreetMap: Map data © OpenStreetMap contributors, Microsoft, Facebook, Inc. and its affiliates, Esri Community Maps contributors, Map layer by Esri, WMS.

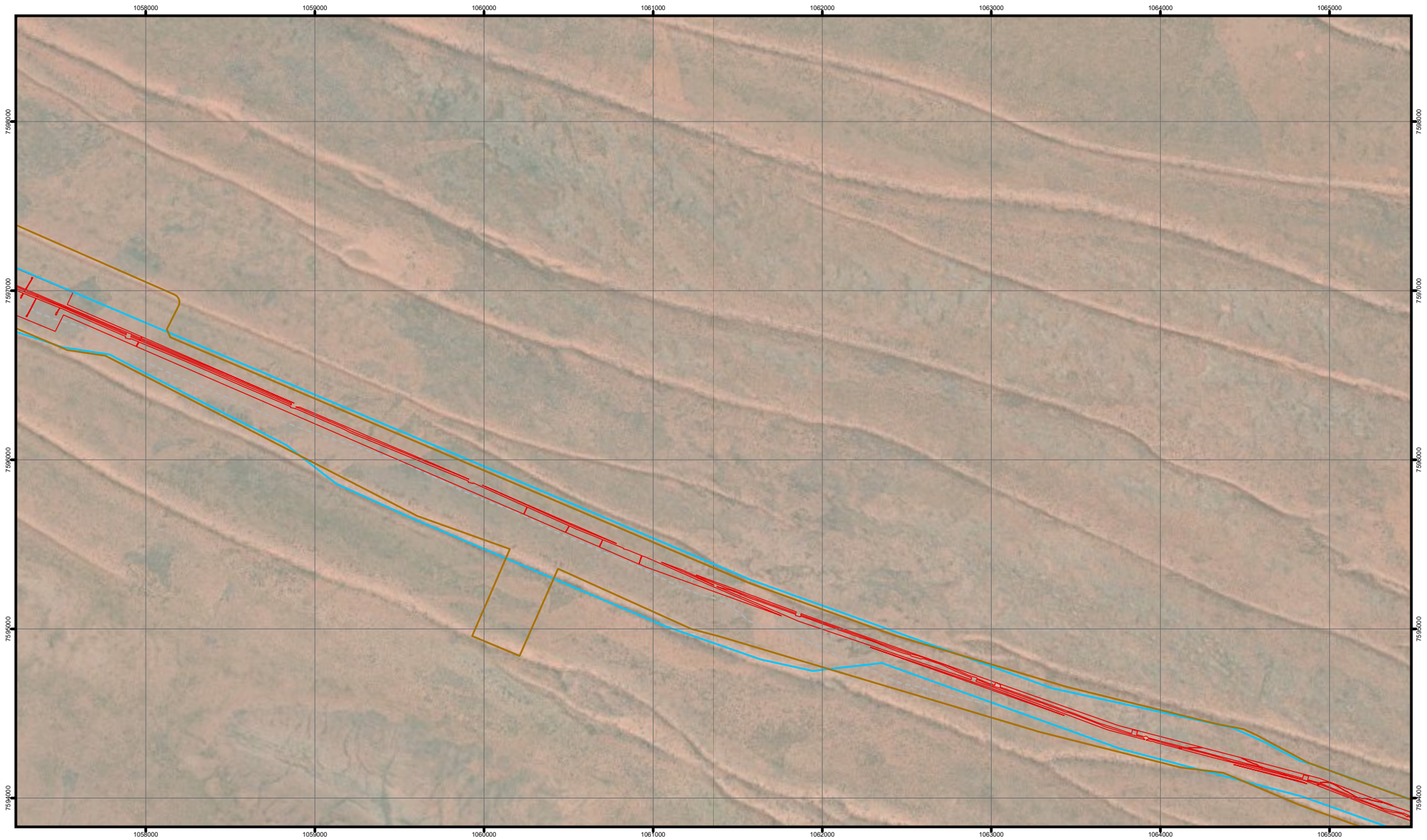
**LEGEND**

- Development Envelope (v2)
- JBS&G Australia Pty Ltd, 2021. Detailed Flora and Vegetation Survey - Havieron Infrastructure Corridor.
- ▲ *Goodenia hartiana*
- Ecoscape Australia Pty Ltd (2024). Havieron Mine and Service Infrastructure Corridor Targeted Flora Survey.



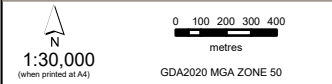
**Survey effort for *Goodenia hartiana***

**GREATLAND PTY LTD**  
  
**ENVIRONMENTAL REVIEW DOCUMENT - TELFER**



**AECOM** Delivering a better world

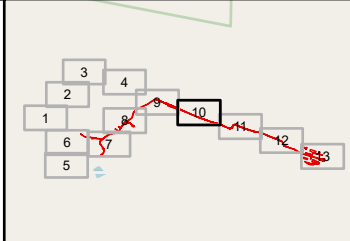
PROJECT ID 60750944 CREATED BY WALLINGTONM  
 DATE MODIFIED 09 APR 2025 APPROVED BY S.MAASS



DATA SOURCES: Base Data: (c) Based on information provided by and with the permission of the Western Australian Land Information Authority trading as Landgate (2010).  
 Service Layer Credits: World Imagery: Source: Esri, Maxar, Earthstar Geographics, and the GIS User Community; OpenStreetMap: Map data © OpenStreetMap contributors, Microsoft, Facebook, Inc. and its affiliates, Esri Community Maps contributors, Map layer by Esri, WMS.

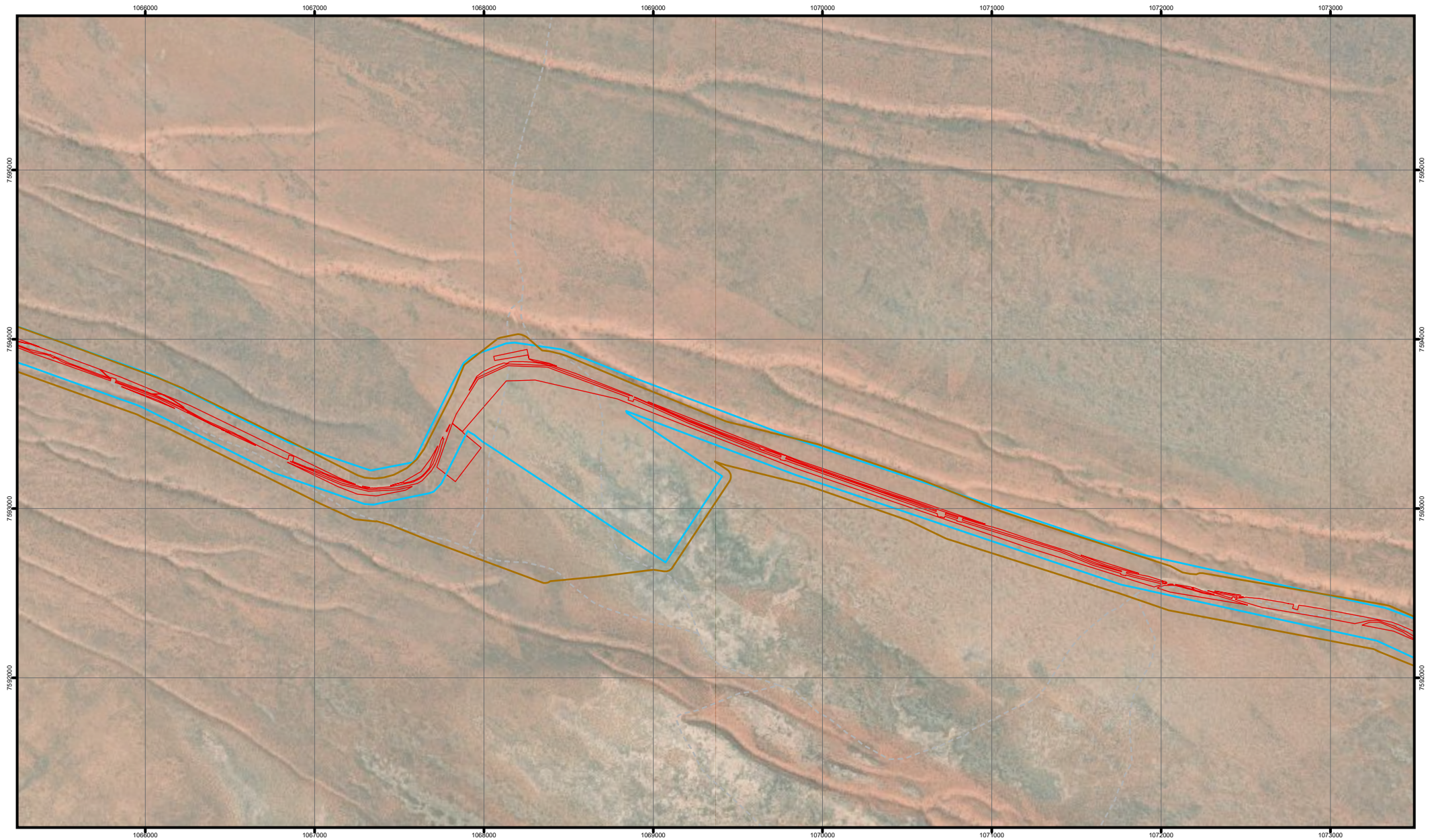
**LEGEND**

- Development Envelope (v2)
- JBS&G Australia Pty Ltd, 2021. Detailed Flora and Vegetation Survey - Havieron Infrastructure Corridor.
- Havieron Mine and Service Infrastructure Corridor Targeted Flora Survey.



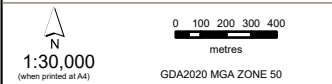
**Survey effort for *Goodenia hartiana***

**GREATLAND PTY LTD**  
**ENVIRONMENTAL REVIEW DOCUMENT - TELFER**



**AECOM** Delivering a better world

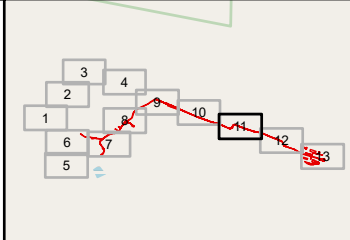
PROJECT ID 60750944 CREATED BY WALLINGTONM  
 DATE MODIFIED 09 APR 2025 APPROVED BY S.MAASS



DATA SOURCES: Base Data: (c) Based on information provided by and with the permission of the Western Australian Land Information Authority trading as Landgate (2010).  
 Service Layer Credits: World Imagery: Earthstar Geographics, OpenStreetMap; Map data © OpenStreetMap contributors, Microsoft, Facebook, Inc and its affiliates, Esri; Community Maps; contributors; Map layer by Esri, WMS.

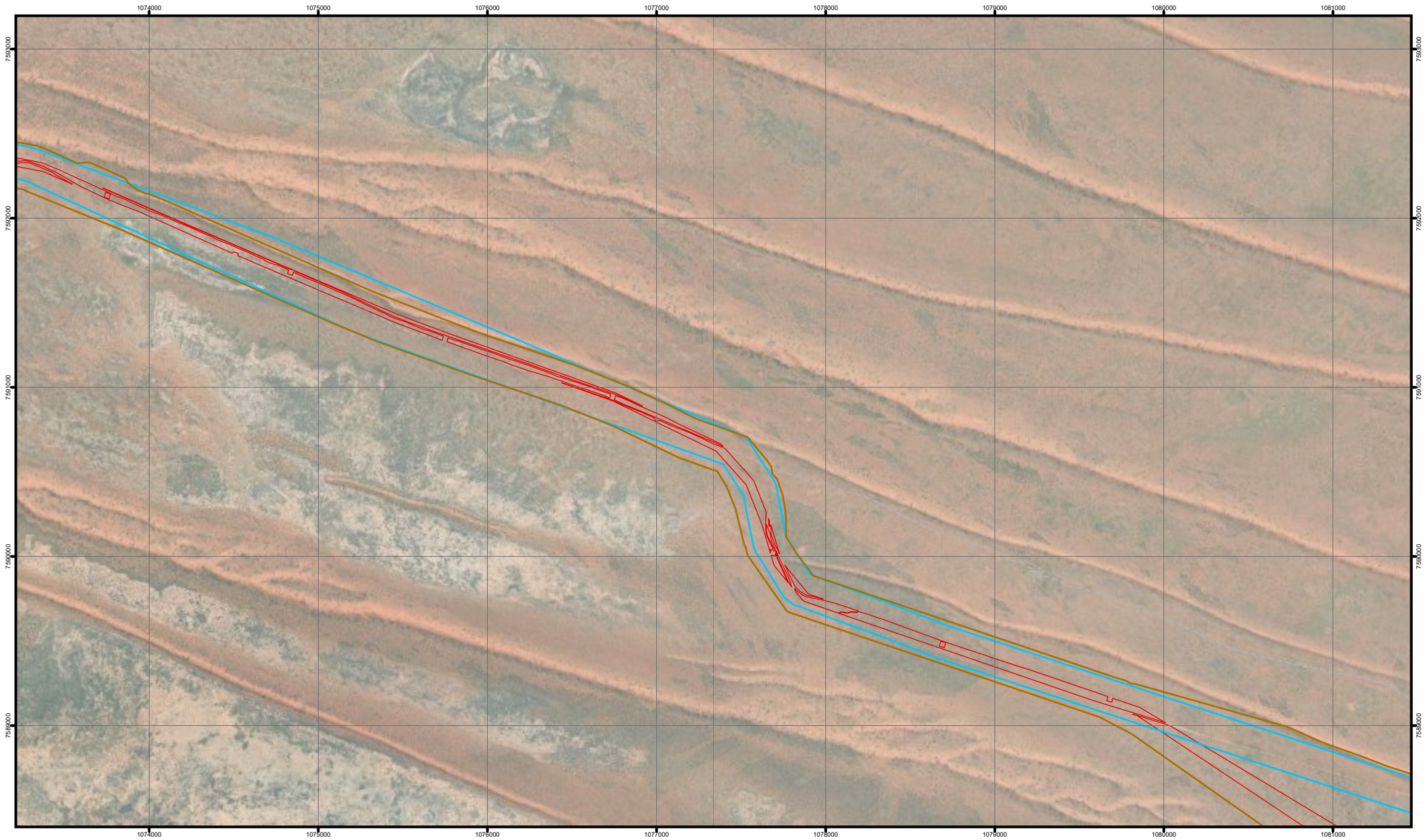
**LEGEND**

- Development Envelope (v2)
- JBS&G Australia Pty Ltd, 2021. Detailed Flora and Vegetation Survey - Havieron Infrastructure Corridor.
- Havieron Mine and Service Infrastructure Corridor Targeted Flora Survey.



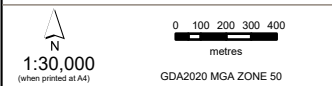
**Survey effort for *Goodenia hartiana***

**GREATLAND PTY LTD**  
**ENVIRONMENTAL REVIEW DOCUMENT - TELFER**



**AECOM** Delivering a better world

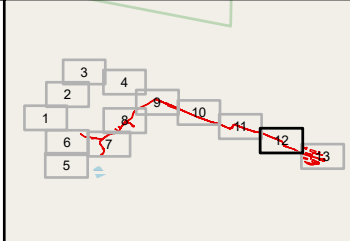
PROJECT ID 60750944 CREATED BY WALLINGTONM  
 DATE MODIFIED 09 APR 2025 APPROVED BY S.MAASS



DATA SOURCES: Base Data: (c) Based on information provided by and with the permission of the Western Australian Land Information Authority trading as Landgate (2010).  
 Service Layer Credits: World Imagery: Earthstar Geographics, OpenStreetMap; Map data © OpenStreetMap contributors, Microsoft, Facebook, Inc. and its affiliates; Esri Community Maps contributors; Map layer by Esri, WMS.

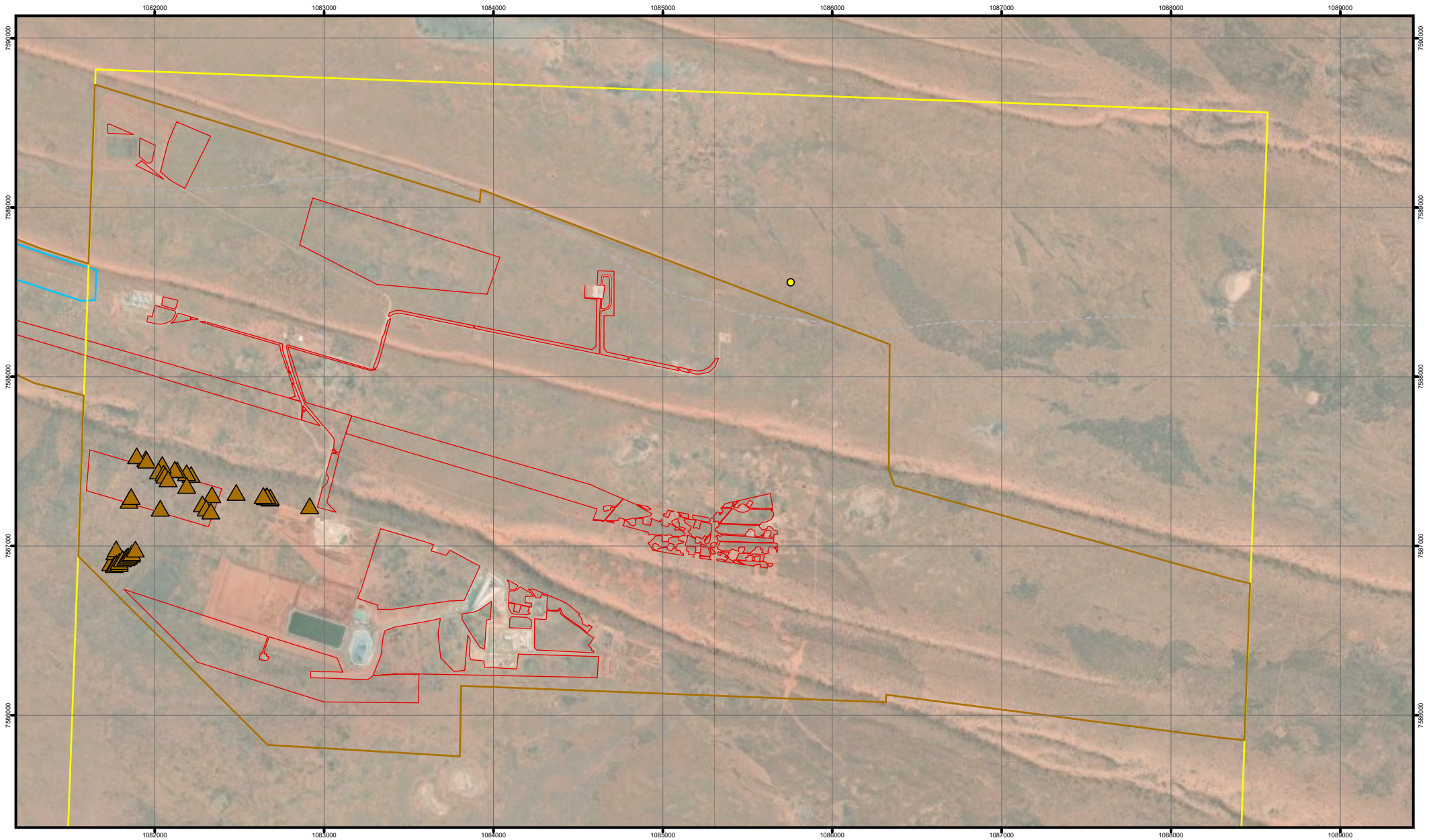
**LEGEND**

- Development Envelope (v2)
- JBS&G Australia Pty Ltd, 2021. Detailed Flora and Vegetation Survey - Havieron Infrastructure Corridor.
- Havieron Mine and Service Infrastructure Corridor Targeted Flora Survey.



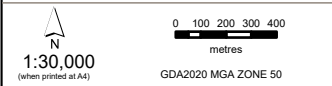
**Survey effort for *Goodenia hartiana***

**GREATLAND PTY LTD**  
**ENVIRONMENTAL REVIEW**  
**DOCUMENT - TELFER**



**AECOM** Delivering a better world

PROJECT ID 60750944 CREATED BY WALLINGTONM  
 DATE MODIFIED 09 APR 2025 APPROVED BY S.MAASS

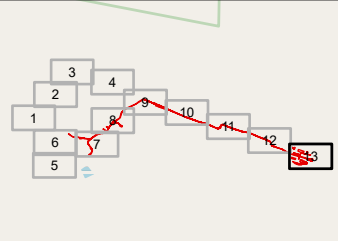


DATA SOURCES: Base Data: (c) Based on information provided by and with the permission of the Western Australian Land Information Authority trading as Landgate (2010).  
 Service Layer Credits: World Imagery: Earthstar Geographics, OpenStreetMap; Map data © OpenStreetMap contributors, Microsoft, Facebook, Inc. and its affiliates; Esri Community Maps contributors; Map layer by Esri/WMS.

**LEGEND**

- Development Envelope (v2)
- Ecoscape Australia Pty Ltd (2024)
- ▲ *Goodenia hartiana*
- Ecoscape Australia Pty Ltd (2024). Havieron Mine and Service
- Infrastructure Corridor Targeted Flora Survey.

- *Goodenia hartiana*
- Stratenen-JBS&G (2020). Detailed Flora and Vegetation Survey Havieron Project Area.
- JBS&G Australia Pty Ltd, 2021. Detailed Flora and Vegetation Survey - Havieron Infrastructure Corridor.



**Survey effort for *Goodenia hartiana***

**GREATLAND PTY LTD**  
**ENVIRONMENTAL REVIEW DOCUMENT - TELFER**