

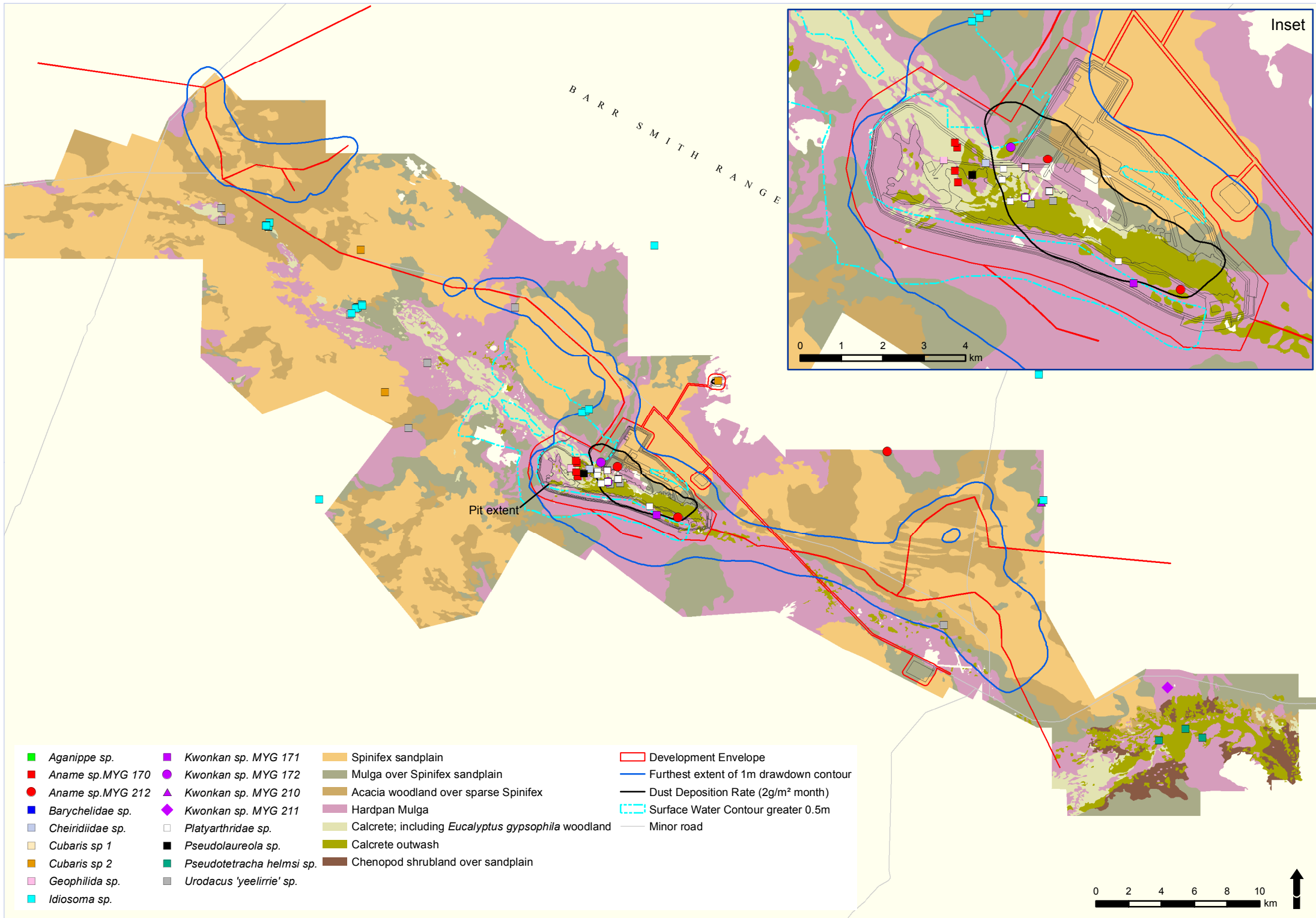
**Yeelirrie Uranium Project**  
**Response to Submissions**

**Attachment 4**

Figure 9-19 Short range endemic invertebrate fauna observations

Table – SRE species recorded in the Yeelirrie Project Area, preferred VSAs and impact

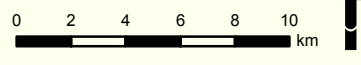




Inset

BARR SMITH RANGE

Pit extent



- |   |   |   |   |
|---|---|---|---|
| <span style="color: green;">■</span> <i>Aganippe</i> sp.    | <span style="color: purple;">■</span> <i>Kwonkan</i> sp. MYG 171          | <span style="color: orange;">■</span> Spinifex sandplain  | <span style="border: 1px solid red;">□</span> Development Envelope                  |
| <span style="color: red;">■</span> <i>Aname</i> sp. MYG 170 | <span style="color: purple;">●</span> <i>Kwonkan</i> sp. MYG 172          | <span style="color: grey;">■</span> Mulga over Spinifex sandplain                                   | <span style="color: blue;">—</span> Furthest extent of 1m drawdown contour          |
| <span style="color: red;">●</span> <i>Aname</i> sp. MYG 212 | <span style="color: purple;">▲</span> <i>Kwonkan</i> sp. MYG 210          | <span style="color: brown;">■</span> Acacia woodland over sparse Spinifex                           | <span style="color: black;">—</span> Dust Deposition Rate (2g/m <sup>2</sup> month) |
| <span style="color: blue;">■</span> <i>Barychelidae</i> sp. | <span style="color: purple;">◆</span> <i>Kwonkan</i> sp. MYG 211          | <span style="color: purple;">■</span> Hardpan Mulga   | <span style="border: 1px dashed cyan;">□</span> Surface Water Contour greater 0.5m  |
| <span style="color: grey;">■</span> <i>Cheiridiidae</i> sp. | <span style="border: 1px solid black;">□</span> <i>Platyarthridae</i> sp. | <span style="color: lightgreen;">■</span> Calcrete; including <i>Eucalyptus gypsophila</i> woodland | <span style="color: grey;">—</span> Minor road                                      |
| <span style="color: orange;">■</span> <i>Cubaris</i> sp 1   | <span style="color: black;">■</span> <i>Pseudolaureola</i> sp.            | <span style="color: yellowgreen;">■</span> Calcrete outwash   |   |
| <span style="color: orange;">■</span> <i>Cubaris</i> sp 2   | <span style="color: teal;">■</span> <i>Pseudotetracha helmsi</i> sp.      | <span style="color: brown;">■</span> Chenopod shrubland over sandplain                              |   |
| <span style="color: pink;">■</span> <i>Geophilida</i> sp.   | <span style="color: grey;">■</span> <i>Urodacus 'yeelirrie'</i> sp.       |   |   |
| <span style="color: cyan;">■</span> <i>Idiosoma</i> sp.     |   |   |   |

**Table 1 - SRE species recorded in the Yeelirrie Project Area, preferred VSAs and impact**

Group	Species	VSAs	Area of VSA (ha)	Direct Impacts	Additional area potentially affected by indirect impacts (ha)			Significance of impact
				To be cleared (ha) (%)	Dust Deposition (>2 g/m <sup>2</sup> /month)	Groundwater drawdown (>1 m drawdown)	Surface Water (>0.5 m flooding after 1,1000 year ARI)	
<b>Listed Taxon</b>								
Mygalomorph	<i>Idiosoma nigrum</i>	Spinifex sandplain, Acacia Woodland over Sparse Spinifex & Mulga over Spinifex Sandplain	69,837	821 (1.2%)	19.5	4,910	1,434.1	Minor
<b>Short-range Endemics</b>								
Isopod	Platyarthridae/ Bathytropidae	Hardpan Mulga, Calcrete & Calcrete Outwash	27,144	1,502 (5.5%)	0	162.8	1,357.5	Minor/ Moderate
Isopod	<i>Pseudolaureola</i> sp.	Calcrete Outwash	3,095	548 (17.7%)	0	149.8	42.5	Moderate
Tiger Beetle	<i>Pseudotetracha helmsi</i>	Calcrete & Calcrete Outwash	5,914	764 (12.9%)	0	162.8	372	Moderate
<b>Potential Short-range Endemics</b>								
Mygalomorph	Aganippe sp.	Hardpan Mulga	21,230	738 (3.5%)	0	NA	985.5	Minor
Mygalomorph	Aname 'MYG170'	Calcrete & Hardpan Mulga	24,049	954 (4.0%)	0	13	1,315	Minor
Mygalomorph	Aname 'MYG212'	Calcrete Outwash, Acacia Woodland over Sparse Spinifex, Mulga over Spinifex Sandplain & Spinifex Sandplain	72,932	1,369 (1.0%)	19.5	5,060	1,477	Minor
Mygalomorph	Barychelidae	Calcrete Outwash	3,095	548 (17.7%)	0	149.8	42.5	Moderate
Pseudoscorpion	Cheiridiidae	Calcrete	2,819	216 (7.7%)	0	13.0	329.5	Moderate
Isopod	Cubaris sp. 1	Calcrete	2,819	216 (7.7%)	0	13.0	329.5	Moderate
Isopod	Cubaris sp. 2	Hardpan Mulga, Acacia Woodland over Sparse Spinifex, Mulga over Spinifex Sandplain & Spinifex Sandplain	91,067	1,559 (1.7%)	19.5	4,910	2,420	Minor
Chilopod	Geophilida	Hardpan Mulga	21,230	738 (3.5%)	0	NA	985.5	Minor
Mygalomorph	Kwonkan 'MYG171'	Hardpan Mulga	21,230	738 (3.5%)	0	NA	985.5	Minor
Mygalomorph	Kwonkan 'MYG172'	Calcrete	2,819	216 (7.7%)	0	13.0	329.5	Moderate
Mygalomorph	Kwonkan 'MYG210'	Hardpan Mulga	21,230	738 (3.5%)	0	NA	985.5	Minor
Mygalomorph	Kwonkan 'MYG211'	Hardpan Mulga	21,230	738 (3.5%)	0	NA	985.5	Minor
Scorpion	Urodacus 'yeelirrie'	Hardpan Mulga	21,230	738 (3.5%)	0	NA	985.5	Minor