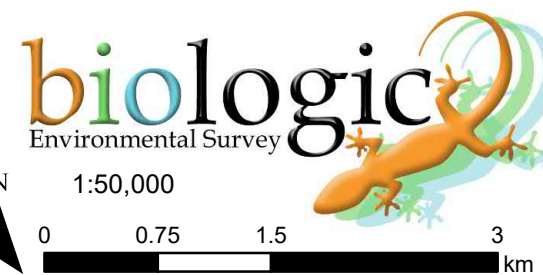


Legend

 Malaga to Ellenbrook Rail Development Envelope

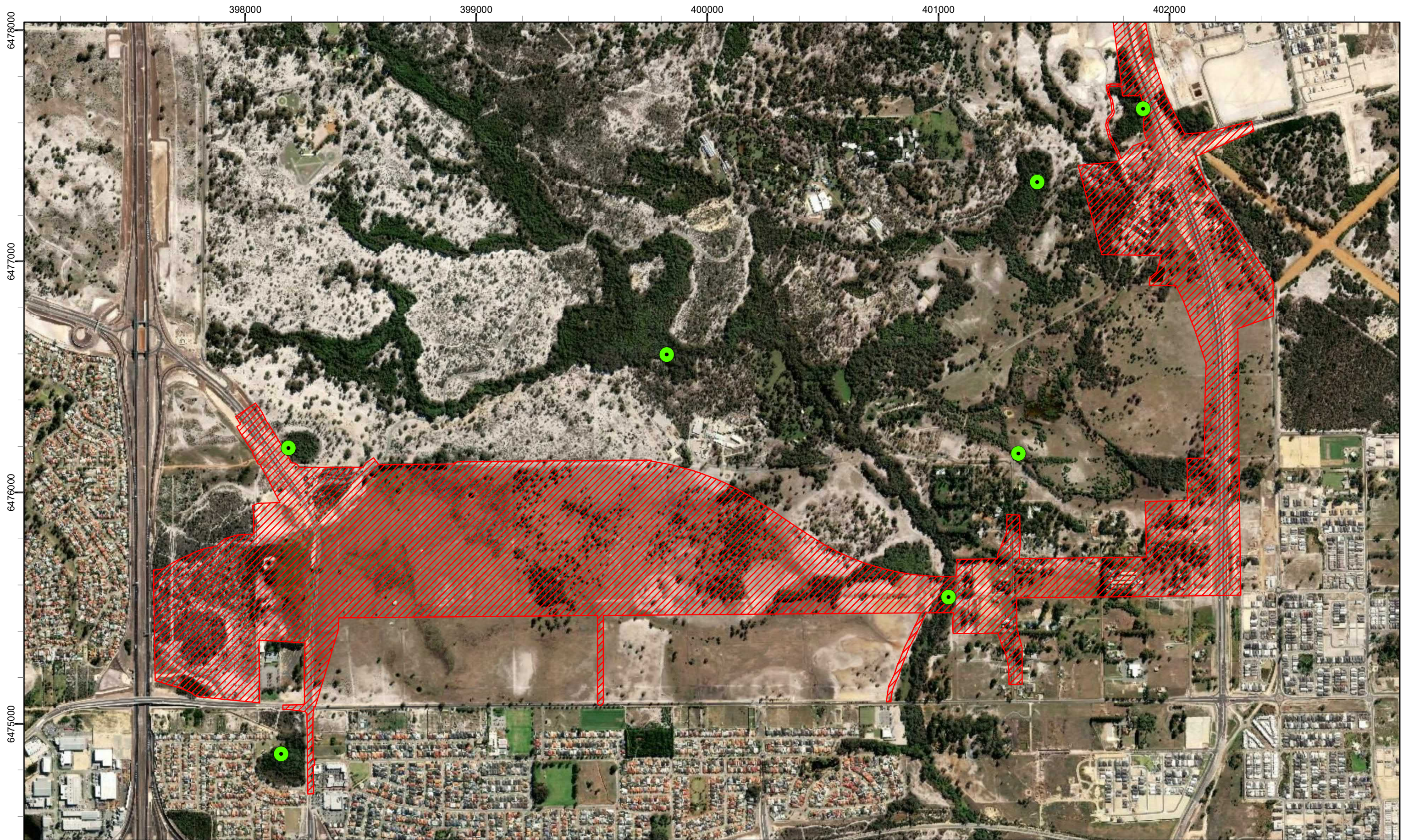


N
1:50,000
0 0.75 1.5 3 km



METRONET
Targeted Black-stripe Minnow Survey
Fig. 1.1: Project Development Envelope


Coordinate System: GDA 1994 MGA Zone 50
 Projection: Transverse Mercator
 Datum: GDA 1994

Size A3. Created 09/09/2020



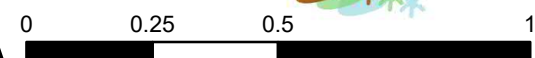
Legend

-  Malaga to Ellenbrook Rail Development Envelope
-  Targeted Black-stripe Minnow Sampling Sites



biologic
Environmental Survey

N 1:15,000



METRONET
Targeted Black-stripe Minnow Survey
Fig. 2.1: Targeted Black-stripe Minnow
Sampling Sites

Coordinate System: GDA 1994 MGA Zone 50
 Projection: Transverse Mercator
 Datum: GDA 1994

401800

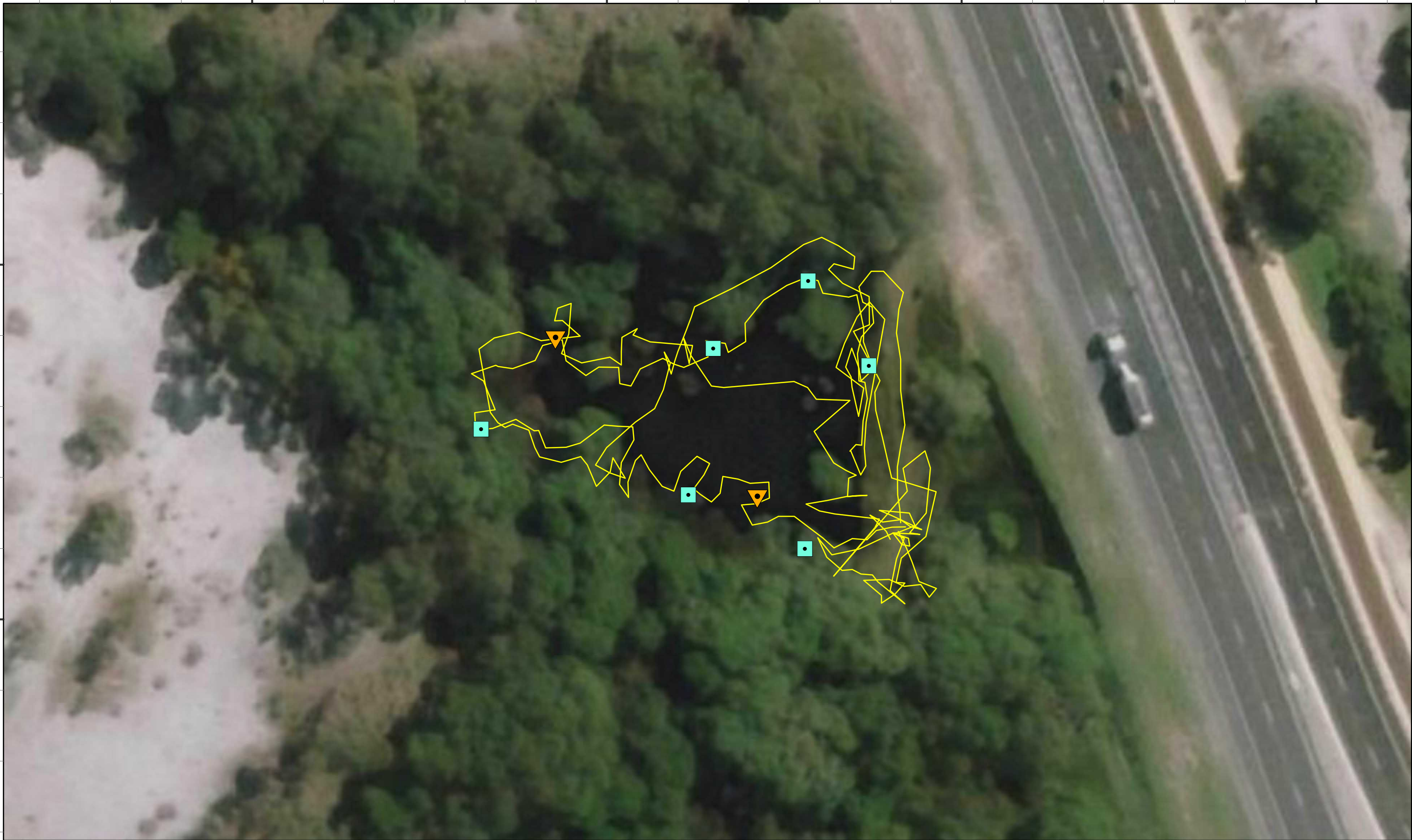
401850

401900

401950

6477700

6477650



Legend

Method

- Box Trap
- ▼ Fyke Net
- Electrofishing Tracks

N
1:500
0 5 10 20
Meters

METRONET
Targeted Black-stripe Minnow Survey
Fig. 3.1: Survey effort at UFI 8678,
Un-named REW

Coordinate System: GDA 1994 MGA Zone 50
 Projection: Transverse Mercator
 Datum: GDA 1994

Size A3. Created 07/09/2020



Legend
Sampling Method

- Box Trap
- ▼ Fyke Net
- Electrofishing Tracks

N
 1:1,000
 0 10 20 40
 Meters

METRONET
Targeted Black-stripe Minnow Survey
Fig. 3.2: Survey effort at UFI 15259, Bennett Brook Channel CCW

Coordinate System: GDA 1994 MGA Zone 50
 Projection: Transverse Mercator
 Datum: GDA 1994
 Size A3. Created 07/09/2020

401200

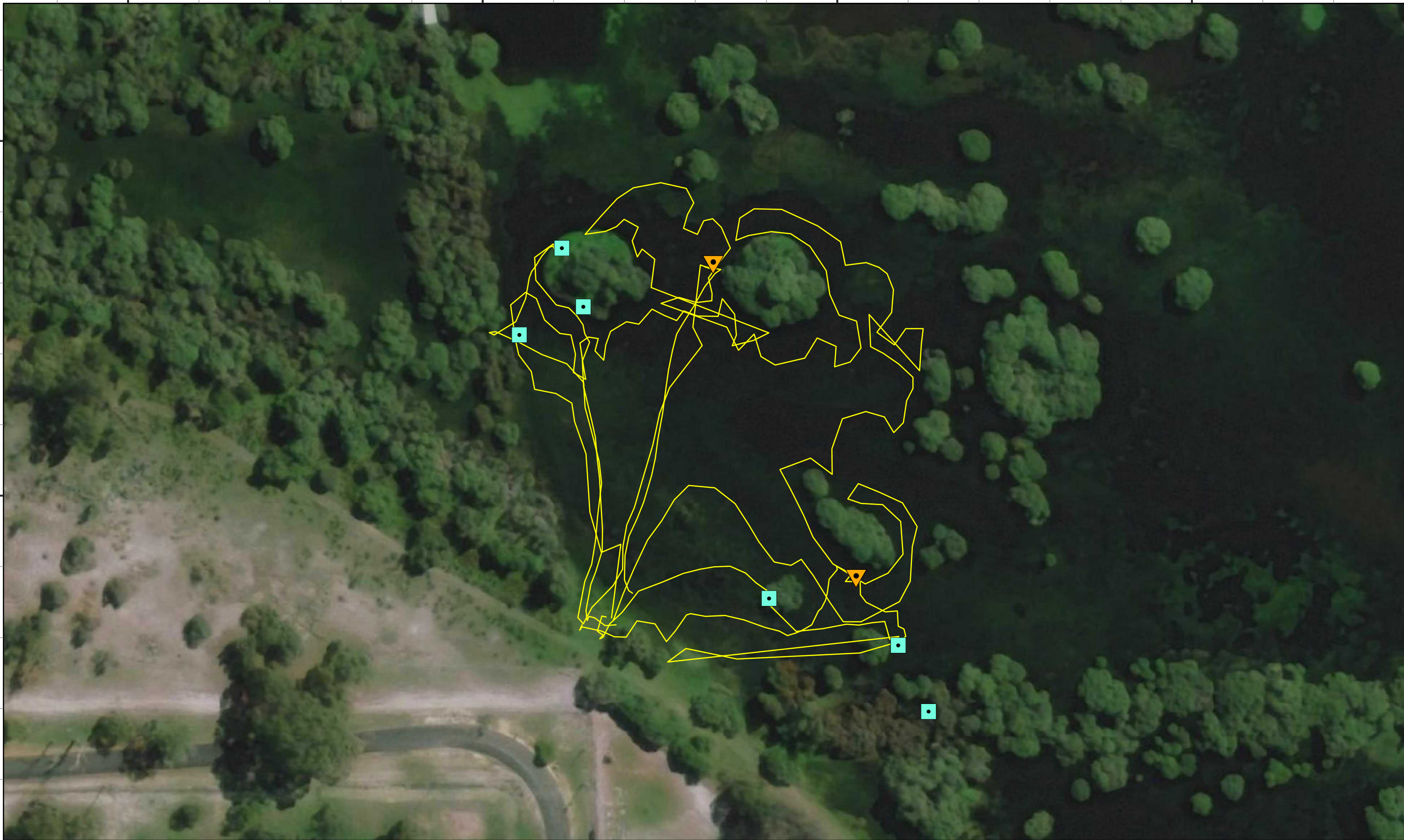
401300

401400

401500

6476300

6476200



Legend

Sampling Method

- Box Trap
- ▼ Fyke Net
- Electrofishing Tracks

biologic
Environmental Survey

N 1:1,000

0 10 20 40 Meters

METRONET
Targeted Black-stripe Minnow Survey
Fig. 3.3: Survey effort at UFI 8724, Horse
Swamp CCW

Coordinate System: GDA 1994 MGA Zone 50
 Projection: Transverse Mercator
 Datum: GDA 1994

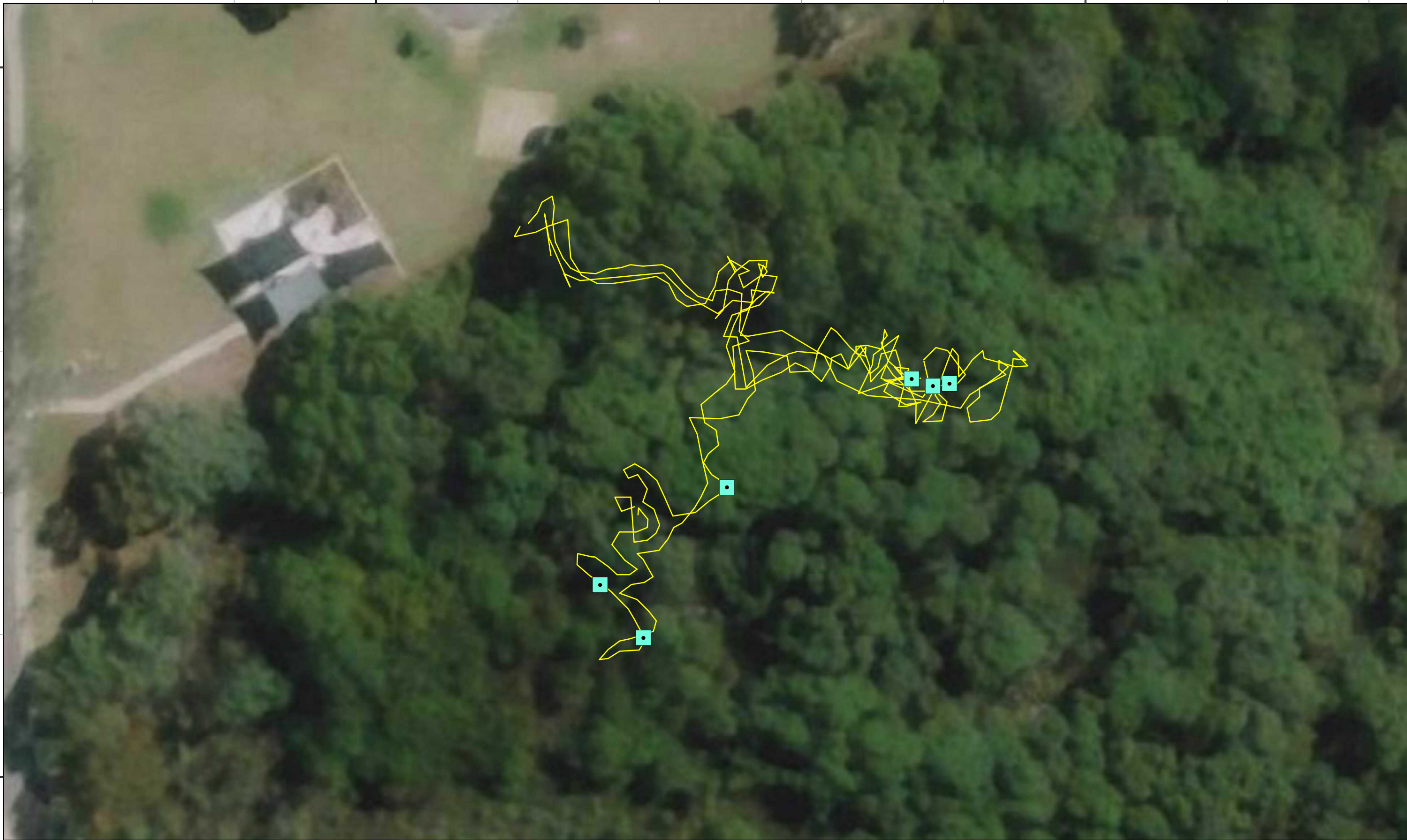
Size A3. Created 07/09/2020

398100

398200

6474900

6474800



Legend

Sampling Method

- Box Trap
- Electrofishing Tracks

biologic
Environmental Survey

N
1:500

0 5 10 20
Meters

METRONET
Targeted Black-stripe Minnow Survey
Fig. 3.4: Survey effort at UFI 8418, Orchid Park CCW

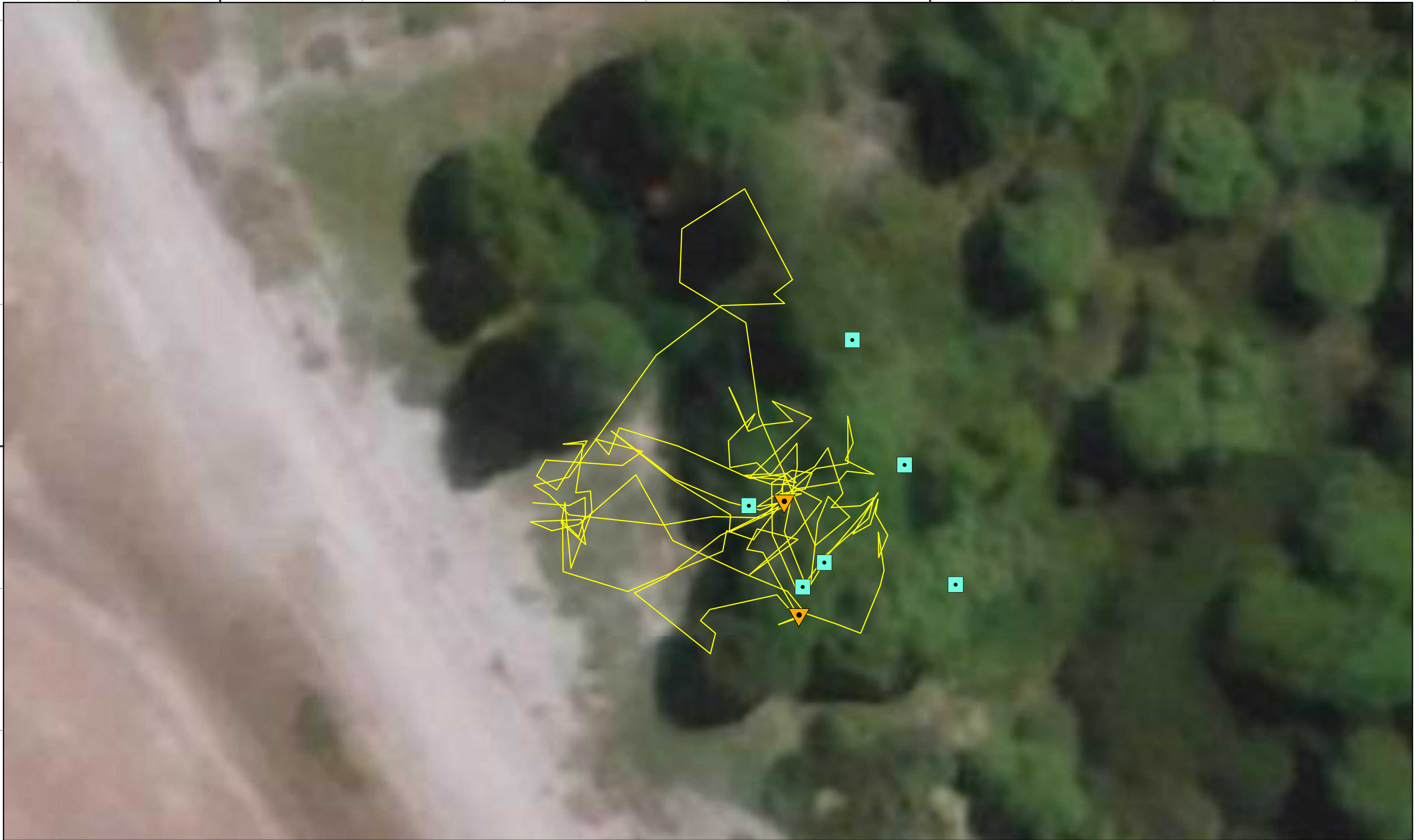
Coordinate System: GDA 1994 MGA Zone 50
 Projection: Transverse Mercator
 Datum: GDA 1994

Size A3. Created 07/09/2020

398150




398200

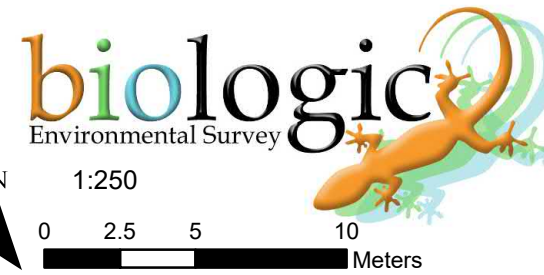
6476200



Legend

Sampling Method

-  Box Trap
-  Fyke Net
-  Electrofishing Tracks



N
1:250
0 2.5 5 10
Meters

METRONET
Targeted Black-stripe Minnow Survey
Fig. 3.5: Survey effort at UFI 8429, Un-named CCW

Coordinate System: GDA 1994 MGA Zone 50
Projection: Transverse Mercator
Datum: GDA 1994

Size A3. Created 07/09/2020