

Telfer-Havieron Gold Mining Project

Proposal Content Document

Table 1: General proposal content description

Proposal title	Telfer – Havieron Gold Mining Project
Proponent name	Greatland Pty Ltd (ABN 92 108 498 997)
Short description	<p>Greatland Pty Ltd acquired the Telfer Gold Mine with existing approval for the recommencement and expansion of operations to include the mining and processing of 400 million tonnes of gold ore at a rate of up to 23 million tonnes per annum, and the transport of copper concentrate to Port Hedland by road. The Telfer project also includes a power supply of up to 100 megawatts to the Telfer Gold Mine using a 440 km long power supply and infrastructure corridor from Port Hedland.</p> <p>The Telfer – Havieron Gold Mining proposal is for the expansion of the Telfer Gold Mine to include the Havieron underground mine, within a development envelope encompassing both the Telfer and Havieron operations and inclusive of a haul road for trucking of ore from Havieron to Telfer for processing, waste rock landforms, evaporation ponds and expanded ground water abstraction, for a combined total of 32 million tonnes of ore production.</p> <p>The proposal is located about 400 km south-east of Port Hedland, in the Great Sandy Desert region of Western Australia. The Telfer Mine is located about 55 km west of the Havieron Gold Mine.</p>

Table 2: Proposal content elements

Proposal element	Location	Existing Proposal extent, capacity, or range (Telfer MS 605, 606 and 650)	Existing Proposal extent, capacity, or range (Havieron Stage 1 approved under secondary approvals)	Proposed amendment (Consolidation of Telfer MS 605, 606, 650, continued use of Havieron Stage 1, and the development and operation of Havieron Stage 2)	Combined max extent, capacity, or range
Physical elements					
Development Envelope	Figure 1	No Development Envelope previously defined	No Development Envelope previously defined	A single Development Envelope encompassing: <ul style="list-style-type: none"> • Telfer power supply corridor (MS 605 and 650) • Telfer mine operations and associated infrastructure (MS 606) • Havieron stage 1 (mining proposals 89453 and 121684) • Proposed Havieron stage 2 and infrastructure corridor between Havieron and Telfer 	36,647 ha
Disturbance Footprint	Figures 1-5	6,607 ha comprising: <ul style="list-style-type: none"> • Telfer power supply infrastructure corridor – 1,500 ha (completed under MS 605, with issuance of MS 650 to amend MS 605 with additional fauna management conditions). • Telfer Mine operational footprint – 4,921 ha (completed under MS 606). 	279 ha comprising: <ul style="list-style-type: none"> • Havieron stage 1 mining proposal rev3 (Registration ID 89453) 203 ha • Havieron stage 1 mining proposal rev4 (Registration ID121684) 76 ha 	Additional 630 ha disturbance	No more than 7,516 ha disturbance within a 36,647 ha Development Envelope.

Telfer-Havieron Gold Mining Project Proposal Content Document

Proposal element	Location	Existing Proposal extent, capacity, or range (Telfer MS 605, 606 and 650)	Existing Proposal extent, capacity, or range (Havieron Stage 1 approved under secondary approvals)	Proposed amendment (Consolidation of Telfer MS 605, 606, 650, continued use of Havieron Stage 1, and the development and operation of Havieron Stage 2)	Combined max extent, capacity, or range
		<ul style="list-style-type: none"> 186 ha of historic unaccounted for disturbance at Telfer (prior to MS 605 and MS 606) 			
Waste rock landforms	Figures 2-5	Up to 1,562 million tonnes of waste rock (MS 606)	Up to 260,000 m ³ of waste rock	Addition of five million tonnes of waste rock	Up to 1,567 million tonnes of waste rock
Infrastructure corridor	Figures 2-5	NA	55 km track between Havieron and Telfer	Widening and sealing of track to form a 55 km infrastructure corridor (transport, electricity and water) between Havieron and Telfer	55 km infrastructure corridor
Evaporation ponds	Figure 5	NA	Three evaporation pond cells (ponds 1-3) (maximum operating volume of 477,130 m ³)	Addition of three evaporation pond cells (ponds 4-6) (maximum operating volume of 477,130 m ³)	Six evaporation ponds for with a total maximum operating volume of 609,550 m³ and an evaporation surface area of 60 ha
Raw water ponds	Figure 5	NA	NA	Addition of raw water storage ponds (5 ha)	Up to 5 ha raw water storage pond
Havieron permanent camp	Figure 5	NA	NA	Addition of permanent camp (9ha)	Up to 9 ha permanent Havieron camp
Operational elements					
Mining of gold copper ore	Within the Development Envelope	Up to 29 million tonnes of ore per year (including dump leach ore)	NA	Addition of up to three million tonnes of ore per year from the Havieron project	Up to 32 million tonnes ore per year (including dump leach ore)
Processing throughput of gold copper ore		Up to 26 million tonnes per year	NA	No change	Up to 26 million tonnes per year

Telfer-Havieron Gold Mining Project Proposal Content Document

Proposal element	Location	Existing Proposal extent, capacity, or range (Telfer MS 605, 606 and 650)	Existing Proposal extent, capacity, or range (Havieron Stage 1 approved under secondary approvals)	Proposed amendment (Consolidation of Telfer MS 605, 606, 650, continued use of Havieron Stage 1, and the development and operation of Havieron Stage 2)	Combined max extent, capacity, or range
Electrical power generation		Up to 160 MW	NA	No change	Up to 160 MW
Waste rock production		Up to 90 million tonnes per year	NA	No change	Up to 90 million tonnes per year
Tailings production		Up to 550 million tonnes	NA	No change	Up to 550 million tonnes
Tailings to paste plant (for underground backfill)		NA	NA	Up to 21.6 million tonnes	Up to 21.6 million tonnes
Groundwater abstraction for water supply and mine dewatering		Up to 200 ML/year (MS 605) Up to 29,700 ML/year (MS 606)	Abstraction of up to 1,550 ML/year under GWL 202749 (varied to current abstraction volume on 9/02/2024)	Continued abstraction of up to 1,550 ML/year under GWL 202749 Additional abstraction of up to 450 ML/year at Havieron	Abstraction of up to 31,900 ML/year
Greenhouse gas emissions					
Construction					
Scope 1		Estimated at less than 30,000 t CO ₂ -e	27,132 t CO ₂ -e	A predicted addition of less than 20,000 t CO₂-e	Predicted total less than 77,132 t CO₂-e
Scope 2		No scope 2 emissions due to electricity generation from the onsite power station.			0 t CO ₂ -e*
Scope 3		Not assessable at the time	Included in combined Havieron GHG assessment	Predicted total 311 kt CO₂-e	Predicted total 311 kt CO₂-e
Operation					

Telfer-Havieron Gold Mining Project Proposal Content Document

Proposal element	Location	Existing Proposal extent, capacity, or range (Telfer MS 605, 606 and 650)	Existing Proposal extent, capacity, or range (Havieron Stage 1 approved under secondary approvals)	Proposed amendment (Consolidation of Telfer MS 605, 606, 650, continued use of Havieron Stage 1, and the development and operation of Havieron Stage 2)	Combined max extent, capacity, or range
Scope 1 Annual average ¹		127,356 t CO ₂ -e	Included in combined Havieron Stage 1 and Stage 2 assessment	A predicted addition of 123,510 t CO₂-e per year	A predicted 250,865.2 t CO₂-e per year
Scope 1 Total Life of Mine		1,655,625 t CO ₂ -e	Included in combined Havieron Stage 1 and Stage 2 assessment	A predicted addition of 1,605,626 t CO₂-e	A predicted total of 3,261,251 t CO₂-e
Scope 2		No scope 2 emissions due to electricity generation from the onsite power station.			0 t CO ₂ -e
Scope 3		Included as combined assessment			A predicted annual average of 185 kt CO ₂ -e per year
Rehabilitation					
Progressive rehabilitation at completion or redundancy of feature will be undertaken over the life of the mine to achieve a safe stable and functioning landform which is consistent with the surrounding landscape and other environmental values. Rehabilitation complete within 10 years of cessation of operations.					
Commissioning					
NA					
Decommissioning					
Removal of all above-surface and buried infrastructure within 5 years of cessation of operations. Closure of the project will leave the site on a safe stable condition such that tenements can be relinquished without any future liability for the proponent or the community.					
Other elements which affect extent of effects on the environment					

¹ Peak annual average is equivalent to annual average LOM. Electricity is generated on site and there is no peak/off peak draw from the state power grid.

* No purchased electricity at either Telfer or Havieron and construction power is diesel generators therefore included in Scope 1 estimation.

Telfer-Havieron Gold Mining Project Proposal Content Document

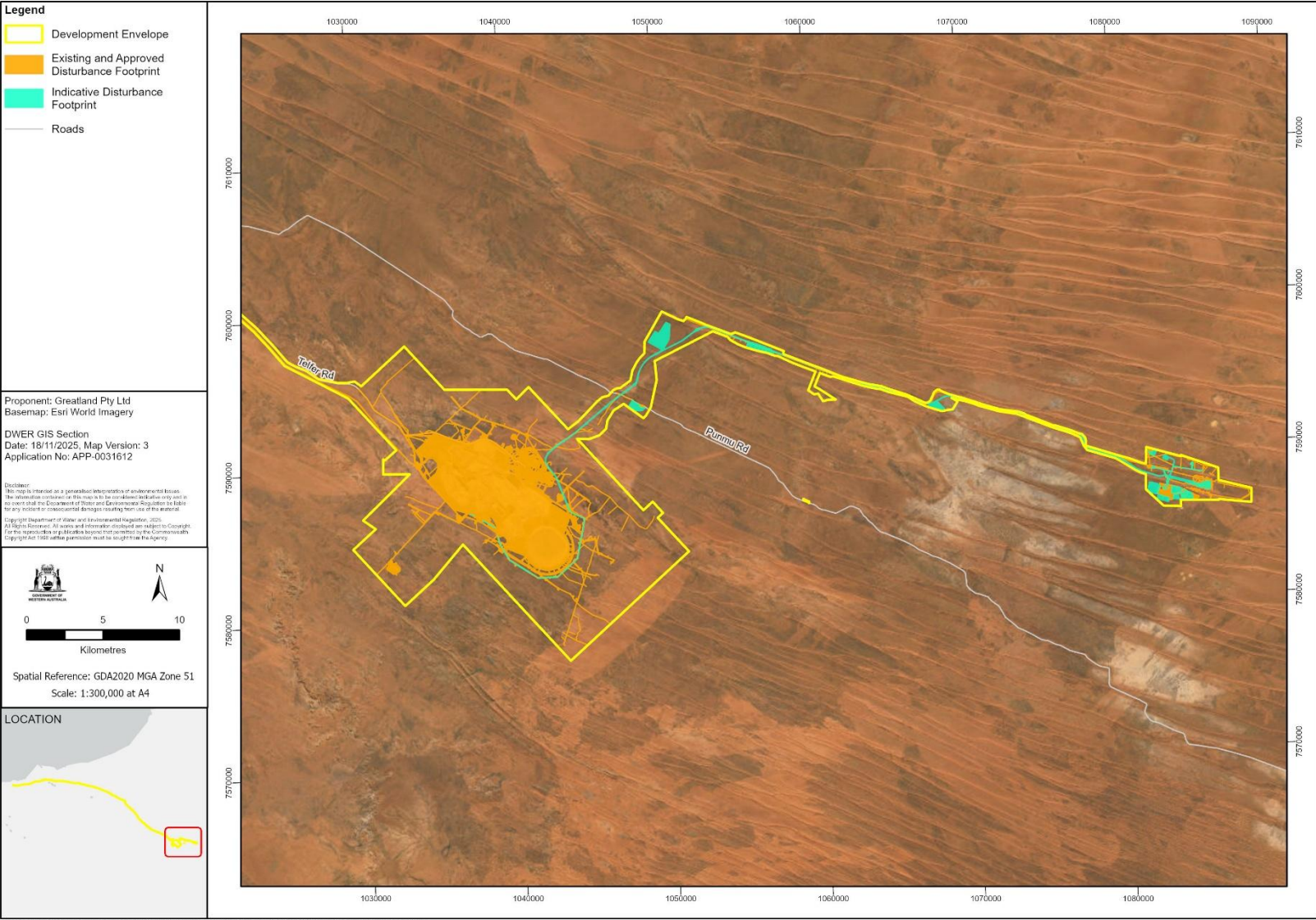
Proposal element	Location	Existing Proposal extent, capacity, or range (Telfer MS 605, 606 and 650)	Existing Proposal extent, capacity, or range (Havieron Stage 1 approved under secondary approvals)	Proposed amendment (Consolidation of Telfer MS 605, 606, 650, continued use of Havieron Stage 1, and the development and operation of Havieron Stage 2)	Combined max extent, capacity, or range
Maximum Project Life		Approximately 25 years (MS606) scheduled depletion of mineral resource 2027	NA	Additional 18 years	43 years
Construction phase		NA	NA	~ 2.5 years	~ 2.5 years
Operations phase		NA	NA	13 years	13 years
Decommissioning phase		NA	NA	5 years	5 years

Telfer-Havieron Gold Mining Project Proposal Content Document



Figure 1 – Telfer - Havieron Project Development Envelope and Indicative Disturbance Footprint (regional view)

Telfer-Havieron Gold Mining Project Proposal Content Document



Telfer-Havieron Gold Mining Project Proposal Content Document

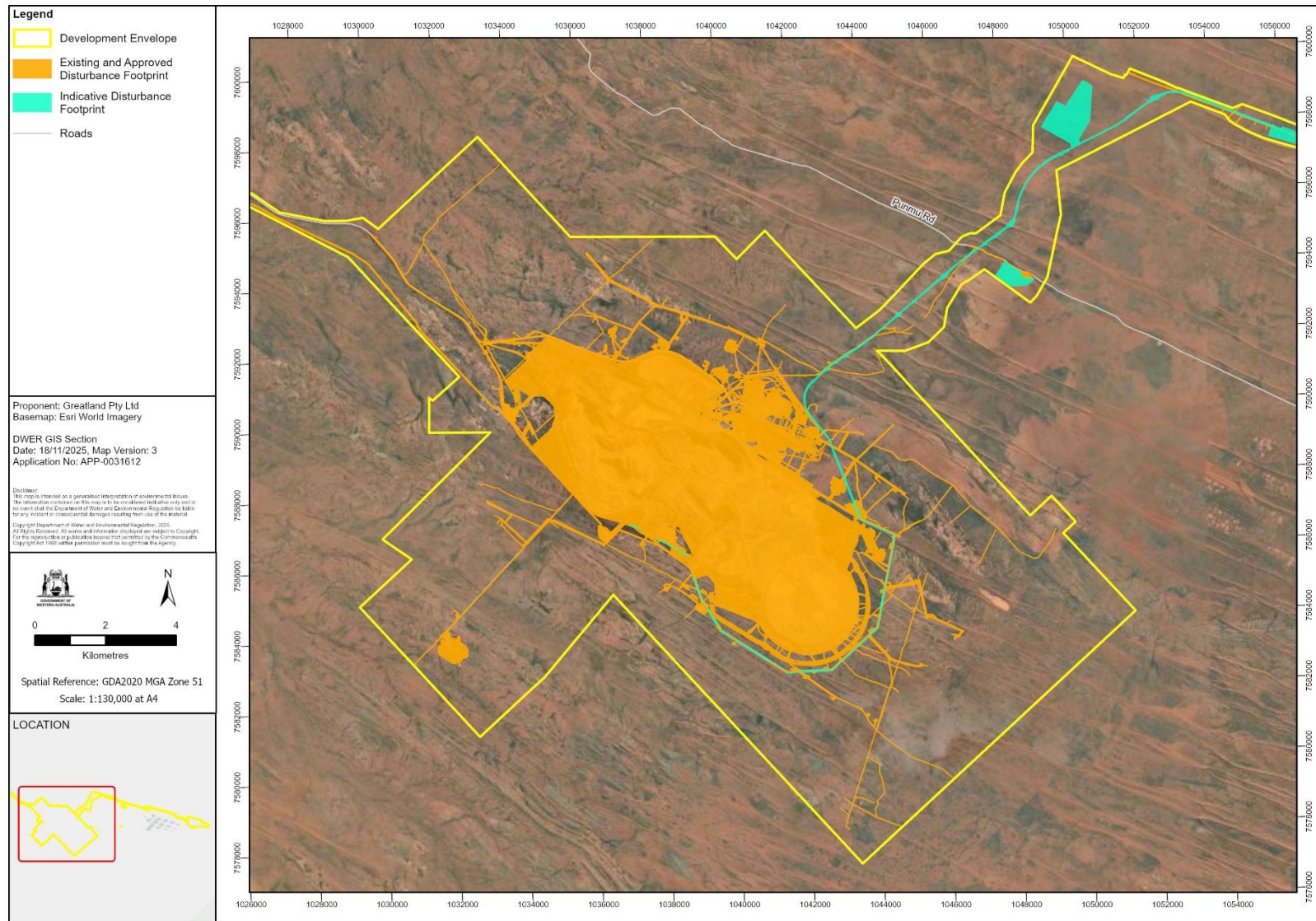


Figure 3 – Telfer - Havieron Project Development Envelope and Indicative Disturbance Footprint – Telfer Mine

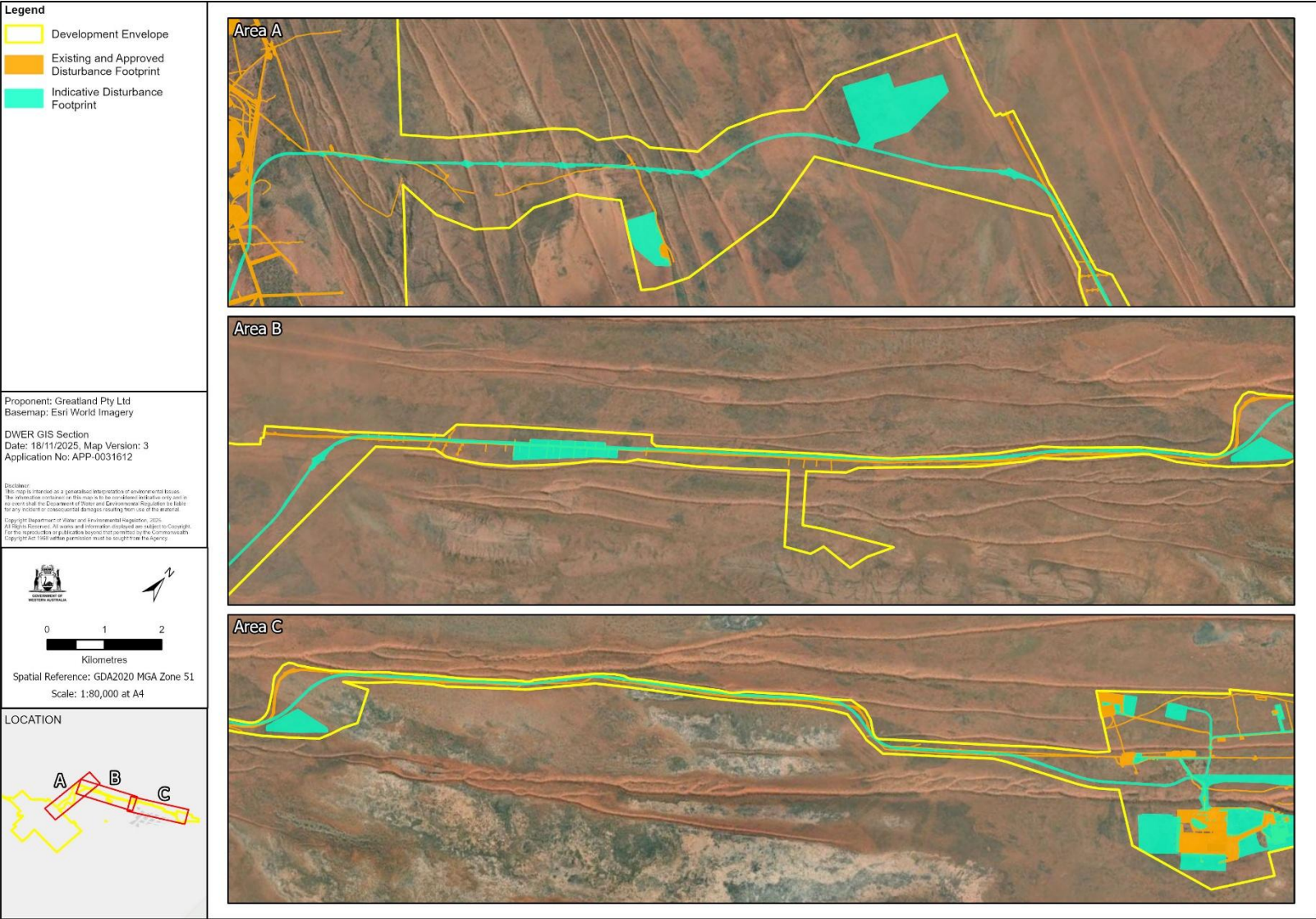


Figure 4 – Telfer - Havieron Project Development Envelope and Indicative Disturbance Footprint – Infrastructure Corridor

Telfer-Havieron Gold Mining Project Proposal Content Document

