



**Table 1:** General proposal content description

Components	Existing Description (as approved via MS-1242, 10 Jan 2025)
<b>Proposal Title</b>	<b>Gabanintha Vanadium Project</b>
<b>Proponent Name</b>	Technology Metals Australia Limited
<b>Short Description</b>	Technology Metals Australia Ltd proposes to construct and operate the Gabanintha Vanadium Project located approximately 615km north-east of Perth and 40km south-east of Meekatharra, along the Meekatharra-Sandstone Road. The Project involves the clearing of up to 1,060ha of native vegetation, open pit mining, the processing of ore from sources inside and outside the Development Envelope, onsite mining and processing waste disposal, groundwater abstraction from the Gabanintha borefield for Project water requirements and water supply to other users plus other supporting activities required to produce a range of products including Vanadium pentoxide, Ferro Vanadium, Iron-Vanadium Concentrate, Titanium concentrate and base metal concentrate.

**Table 2:** Proposal content elements

Proposal Element	Location and description	Existing proposal extend, capacity or range	Proposed Amendment	Combined extend, capacity or range
<b>Physical elements</b>				
Mining elements, including: <ul style="list-style-type: none"> <li>Open pits</li> <li>Haul roads</li> <li>Waste rock landforms</li> </ul>	Figure 1	Disturbance of up to 1,060ha within a 7,152ha Development Envelope.	No Change	Disturbance of up to 1,060ha within a 7,152ha Development Envelope.
Processing elements, including: <ul style="list-style-type: none"> <li>Processing plant with the ability for multiple configurations</li> <li>Run of mine</li> <li>Low-grade stockpile</li> <li>Integrated waste landform for process waste/tailings storage facility</li> <li>Evaporation ponds</li> <li>Reagent storage</li> </ul>				
Supporting activities and infrastructure, including: <ul style="list-style-type: none"> <li>Power station</li> <li>Workshops</li> <li>Fuel storage and refuelling area</li> <li>Administration complex</li> <li>Accommodation camp</li> </ul>				



Proposal Element	Location and description	Existing proposal extend, capacity or range	Proposed Amendment	Combined extend, capacity or range
<ul style="list-style-type: none"> <li>Waste water treatment and sprayfield</li> <li>Borefield and associated infrastructure</li> <li>Dewatering infrastructure</li> <li>Access roads</li> <li>Landfill</li> <li>Ancillary infrastructure</li> </ul>				
<b>Construction elements</b>				
No relevant elements	Nil		The Gabanintha Water Supply borefield will be established at the commencement of the project and will be used by the Proponent and other users.	The Gabanintha Water Supply borefield will be established at the commencement of the project and will be used by the Proponent and other users.
<b>Operational elements</b>				
Mining and material movement	Figure 1	Annual mining rates (ore and waste) will range from 5.3 – 22.3Mt/annum with an average of 12Mt/annum.	No Change	Annual mining rates (ore and waste) will range from 5.3 – 22.3Mt/annum with an average of 12Mt/annum.
Production / end product	Figure 1	Up to 14,400 tonnes of fused vanadium pentoxide (V <sub>2</sub> O <sub>5</sub> ) per annum (or equivalent vanadium units as Ferro Vanadium (FeV80 or other FeV products)). Up to 400,000t per annum of titanium concentrate. Up to 50,000t per annum of base metal concentrate. Up to 2Mt per annum of Iron-Vanadium Concentrate.	No Change	Up to 14,400 tonnes of fused vanadium pentoxide (V <sub>2</sub> O <sub>5</sub> ) per annum (or equivalent vanadium units as Ferro Vanadium (FeV80 or other FeV products)). Up to 400,000t per annum of titanium concentrate. Up to 50,000t per annum of base metal concentrate. Up to 2Mt per annum of Iron-Vanadium Concentrate.
Ore processing	Figure 1	Up to 4 Mt per annum of ore.	No Change	Up to 4 Mt per annum of ore.
Process waste deposition	Figure 1	Disposal of up to 3.9Mt per annum of processing waste to the lined	No Change	Disposal of up to 3.9Mt per annum of processing waste to the lined IWL/TSF,



Proposal Element	Location and description	Existing proposal extend, capacity or range	Proposed Amendment	Combined extend, capacity or range
		IWL/TSF, evaporation ponds or other containment structures.		evaporation ponds or other containment structures.
Groundwater abstraction over the Project life	Figure 1	-	Maximum abstraction 75.3GL	Maximum abstraction 75.3GL
Annual groundwater abstraction	Figure 1	Project water requirements are up to 2.7GL/annum. To facilitate mining, between 0.2 to 1GL/annum will be abstracted. Between 1.7 - 2.7GL/annum will be abstracted from the palaeochannel aquifer depending on the phase of the Project and volume generated by dewatering.	Abstraction for Project water requirements and other users (including offsite) are up to 2.7GL/annum. To facilitate mining, between 0.2 to 1GL/annum will be abstracted. Up to 2.7GL/annum will be abstracted from the palaeochannel aquifer depending on the phase of the Project, the water supply needs of other users and volume generated by dewatering.	Total abstraction of 2.7GL/a, comprising of up to: <ul style="list-style-type: none"> <li>a. 1.0GL/a for mine dewatering in the Mining Area; and</li> <li>b. 2.7 GL/a from the Water Supply Area for project water requirements and other users.</li> </ul>
<b>Greenhouse gas emissions</b>				
Peak annual average				
Scope 1	280,770 tCO <sub>2-e</sub>		No Change	No Change
Scope 2	-		No Change	No Change
Total Combined (Direct Emissions)	280,770 tCO <sub>2-e</sub>		No Change	No Change
Total (based on annual; average scope 1 and 2) – 25 year mine life			No Change	No Change
5,285,536.44 tCO <sub>2-e</sub>			No Change	No Change
<b>Commissioning</b>				
Commissioning of the Processing Plant and supporting infrastructure will occur between year 1.5 – 3. Ore for the Plant commissioning will be sourced from the North Pit.			No Change	No Change
<b>Decommissioning</b>				
Removal of all infrastructure following cessation of mining operations (excluding periods of care and maintenance).			No Change	No Change
<b>Rehabilitation and Closure</b>				
The intent for the Project area post-closure is to return the area to an agreed post-closure land use. At the end of the Project life, the open pits, IWL/TSF and WRLs will remain as permanent features. Progressive rehabilitation will be undertaken over the life of the mine. Areas disturbed through the implementation of the Project will be designed to be safe and non-polluting and constructed so that their final			No Change	No Change



Proposal Element	Location and description	Existing proposal extend, capacity or range	Proposed Amendment	Combined extend, capacity or range
shape, size, stability, and ability to support local native vegetation are comparable to those of natural landforms in the area.				
<b>Other elements which affect extent of effects on the environment</b>				
<b>Proposal time</b>	Maximum project life	Approximately 30 years (including construction and closure)	A maximum of 30 years, including the taking of groundwater from the Water Supply Areas and the construction, operation, decommissioning and closure of the mine and associated infrastructure, commencing on the date of: 1. first water abstraction; or 2. commencement of construction activities; whichever occurs first.	A maximum of 30 years, including the taking of groundwater from the Water Supply Areas and the construction, operation, decommissioning and closure of the mine and associated infrastructure, commencing on the date of: 1. first water abstraction; or 2. commencement of construction activities; whichever occurs first.

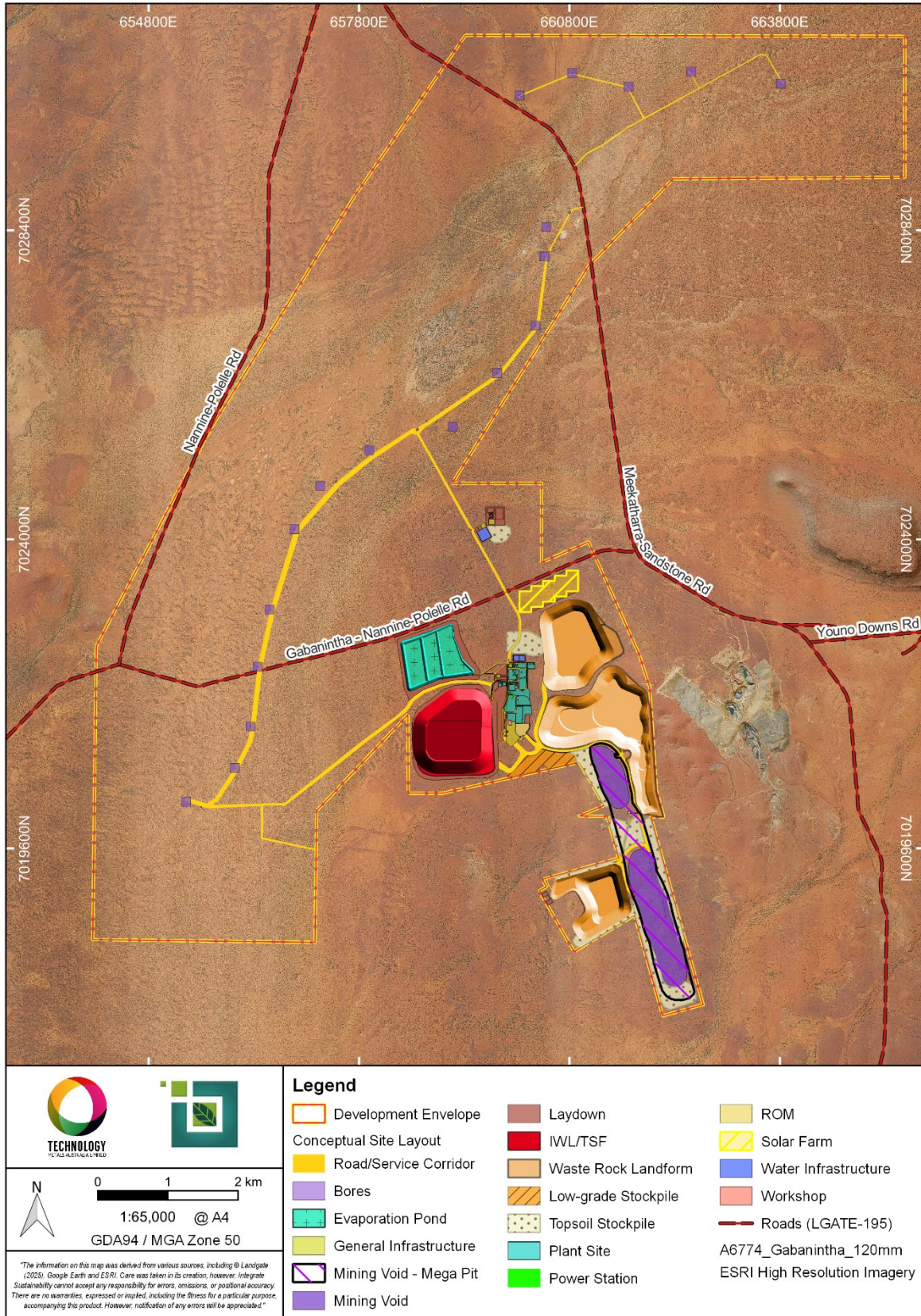


Figure 1 Conceptual site layout / disturbance footprint