



**Figure 9-1: Vegetation Types**

Scale 1:12,000 at A3

0 100 200 m

Coordinate System: GDA 1994 MGA Zone 50

Date: 18/03/2019

**Legend**

- Development Area Footprint
- Major Road
- Minor Road
- Track

**Vegetation Type**

- AfHhMp
- Cleared
- ErAcEc

- Paddock
- Planted

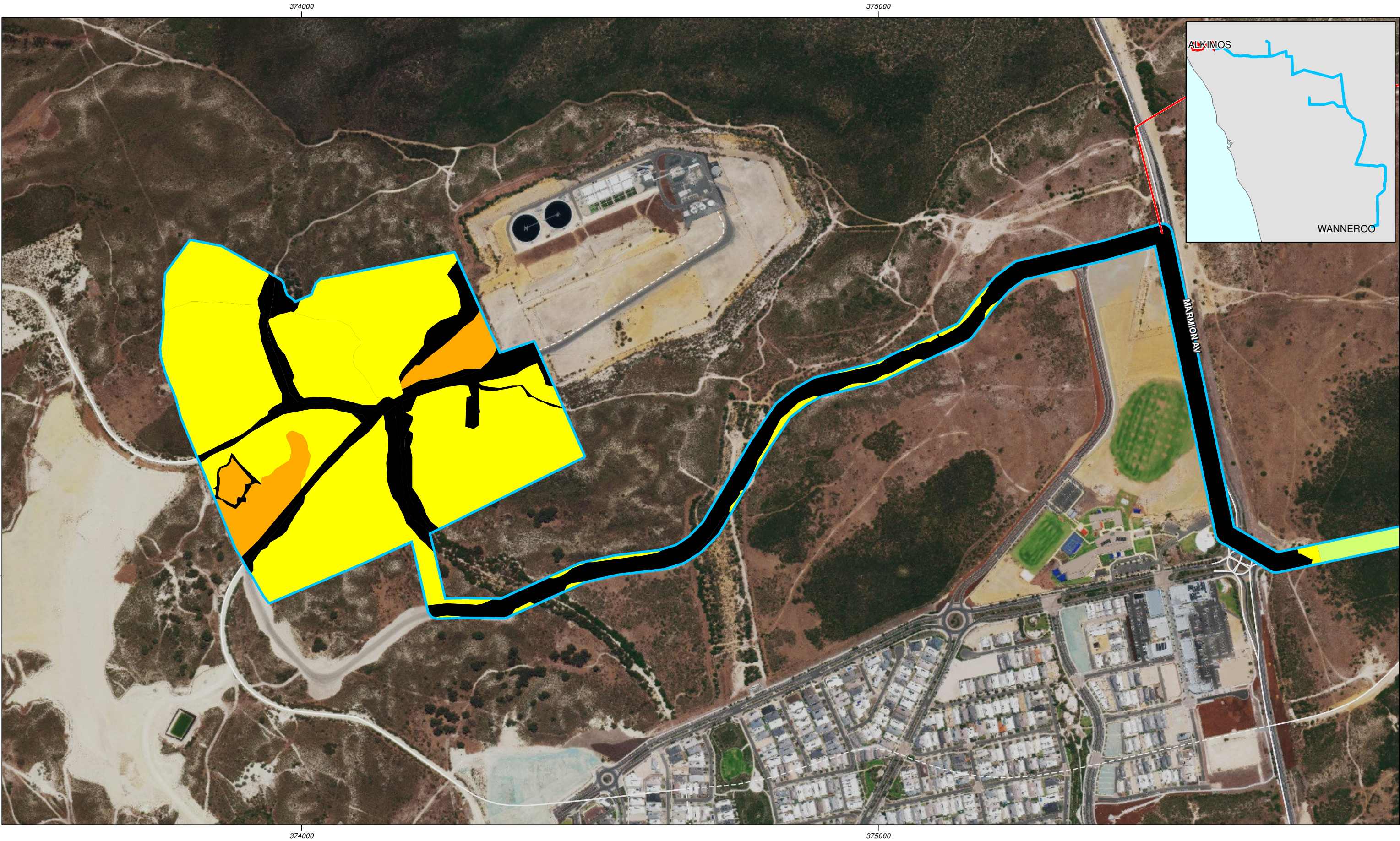
Q:\Consult\2018\WCO\WCO18379\01\_GIS\_documents\ArcMap\_documents\WCO18379\_G025\_RevC.mxd

© 2018. Whilst every care has been taken to prepare this map, Strategen makes no representations or warranties about its accuracy, reliability, completeness or suitability for any particular purpose and cannot accept liability and responsibility of any kind (whether in contract, tort or otherwise) for any expenses, losses, damages and/or costs (including indirect or consequential damage) which are or may be incurred by any party as a result of the map being inaccurate, incomplete or unsuitable in any way and for any reason.

Data source: Service Layer Credits: Source: Esri, DigitalGlobe, GeoEye, Earthstar Geographics, CNES/Airbus DS, USDA, USGS, AeroGRID, IGN, and the GIS User Community. Client: Water Corporation Project area, 07/2018. Created by: c.thatcher

info@strategen.com.au | www.strategen.com.au





**Figure 9-2: Vegetation Condition**

**Scale** 1:6,000 at A3

0 100 m

Coordinate System: GDA 1994 MGA Zone 50  
Date: 18/03/2019

**Legend**

Development Area Footprint

Northern Route Option

Minor Road

Track

**Vegetation Condition**

Completely Degraded

Good

Good - Very Good

Very Good

**WATER**  
CORPORATION

**strategen**  
ENVIRONMENTAL

info@strategen.com.au | www.strategen.com.au

C:\GIS\Consult\2018\WCO\WCO18379\01\_GIS\_documents\ArcMap\_documents\WCO18379\_G026\_RevC.mxd

© 2018. Whilst every care has been taken to prepare this map, Strategen makes no representations or warranties about its accuracy, reliability, completeness or suitability for any particular purpose and cannot accept liability and responsibility of any kind (whether in contract, tort or otherwise) for any expenses, losses, damages and/or costs (including indirect or consequential damage) which are or may be incurred by any party as a result of the map being inaccurate, incomplete or unsuitable in any way and for any reason.

Data source: Service Layer Credits: Source: Esri, DigitalGlobe, GeoEye, Earthstar Geographics, CNES/Airbus DS, USDA, USGS, AeroGRID, IGN, and the GIS User Community. Client: Water Corporation Project area, 07/2018. Created by: c.thatcher



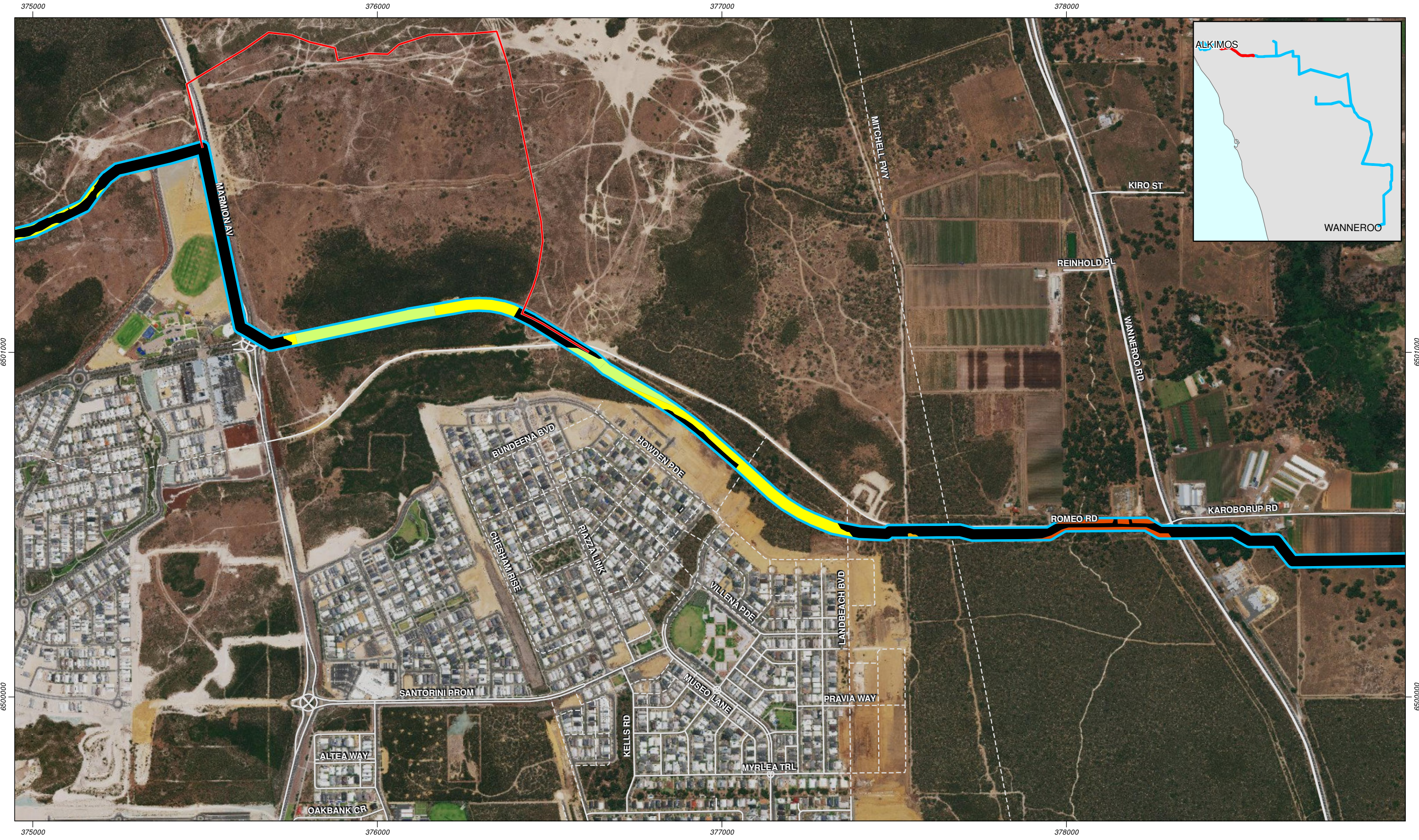
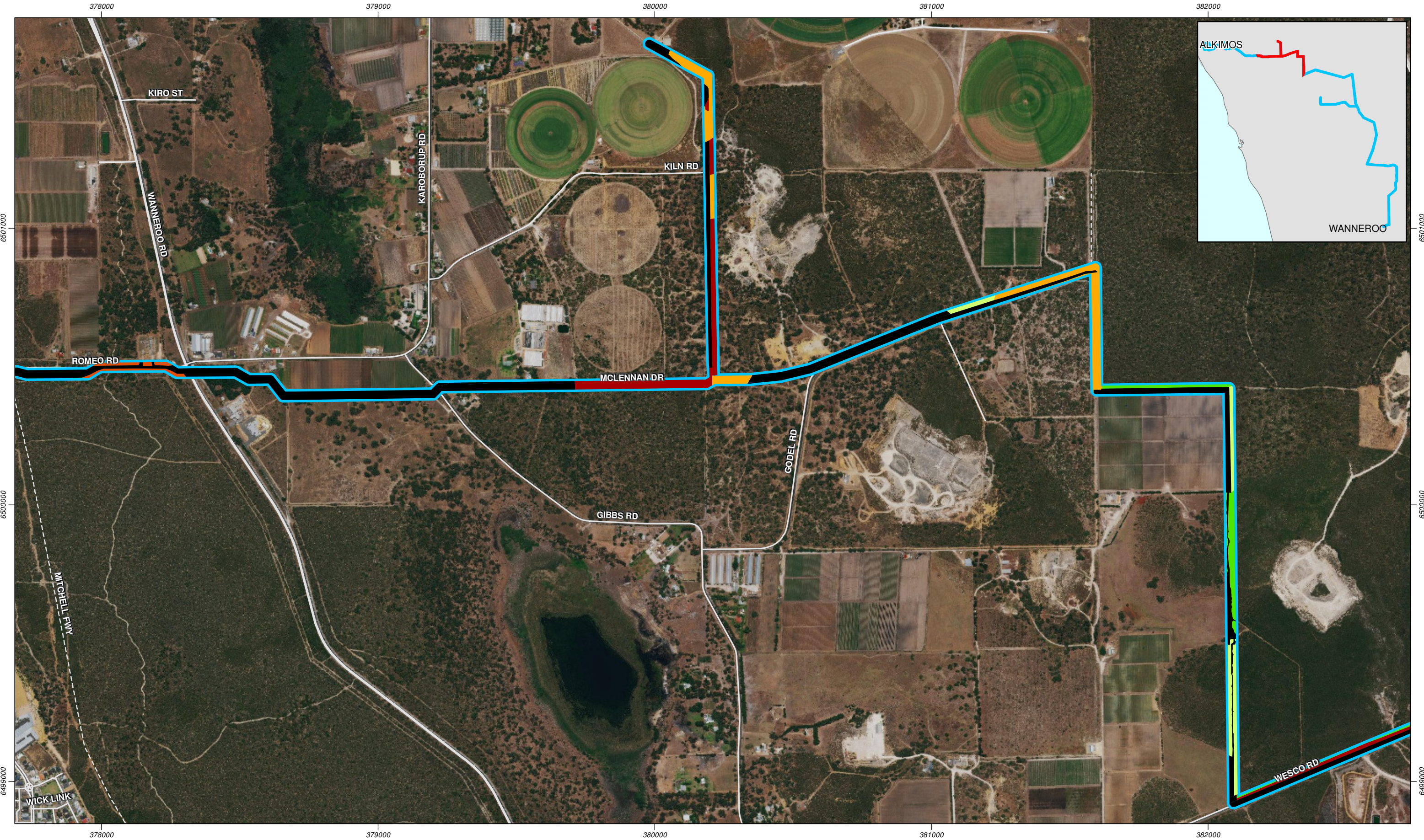


Figure 9-2: Vegetation Condition







**Figure 9-2: Vegetation Condition**

**Scale** 1:12,500 at A3

0 100 200 m

Coordinate System: GDA 1994 MGA Zone 50  
Date: 18/03/2019

**Legend**

- Development Area Footprint
- Major Road
- Minor Road
- Track

**Vegetation Condition**

<span style="display: inline-block; width: 15px; height: 10px; background-color: black; margin-right: 5px;"></span> Completely Degraded	<span style="display: inline-block; width: 15px; height: 10px; background-color: yellow; margin-right: 5px;"></span> Good
<span style="display: inline-block; width: 15px; height: 10px; background-color: red; margin-right: 5px;"></span> Degraded	<span style="display: inline-block; width: 15px; height: 10px; background-color: lightgreen; margin-right: 5px;"></span> Very Good
<span style="display: inline-block; width: 15px; height: 10px; background-color: orange; margin-right: 5px;"></span> Good - Degraded	<span style="display: inline-block; width: 15px; height: 10px; background-color: green; margin-right: 5px;"></span> Excellent