

APPENDIX A

Part 3: Figure 6 (part 3 of 8)

Figure 1 Proposal Area

Figure 2 Locations of proposed bridge structures within the Proposal Area

Figure 3 Greater Bunbury Region Scheme (GBRS) regional roads

Figure 4 Previous assessment areas for BORR Northern Section

Figure 5 Vegetation and flora survey locations

Figure 6 Vegetation types

Figure 7 Vegetation condition, dieback and weeds

Figure 8 Threatened and Priority Ecological Communities and Flora

Figure 9 Dieback status and Protectable areas

Figure 10 Fauna habitat types and SW ecological linkages

Figure 11 Threatened Fauna observations within the Proposal Area and contextual sites

Figure 12 Geomorphic Wetlands, rivers and surface water sample locations within the Proposal Area

Figure 13 Geological Mapping (Environmental Geology Series of Bunbury - Burekup)

Figure 14 Acid Sulfate Soils Risk Mapping

Figure 15 BORR ITP groundwater and soil test locations

Figure 16 North Collie Catchment Flood Depth 1 % AEP Pre-Development

Figure 17 Millars Creek Flood Depth 1 % AEP Pre-Development

Figure 18 Gavin's Gully Catchment Flood Depth 1 % AEP Pre-Development

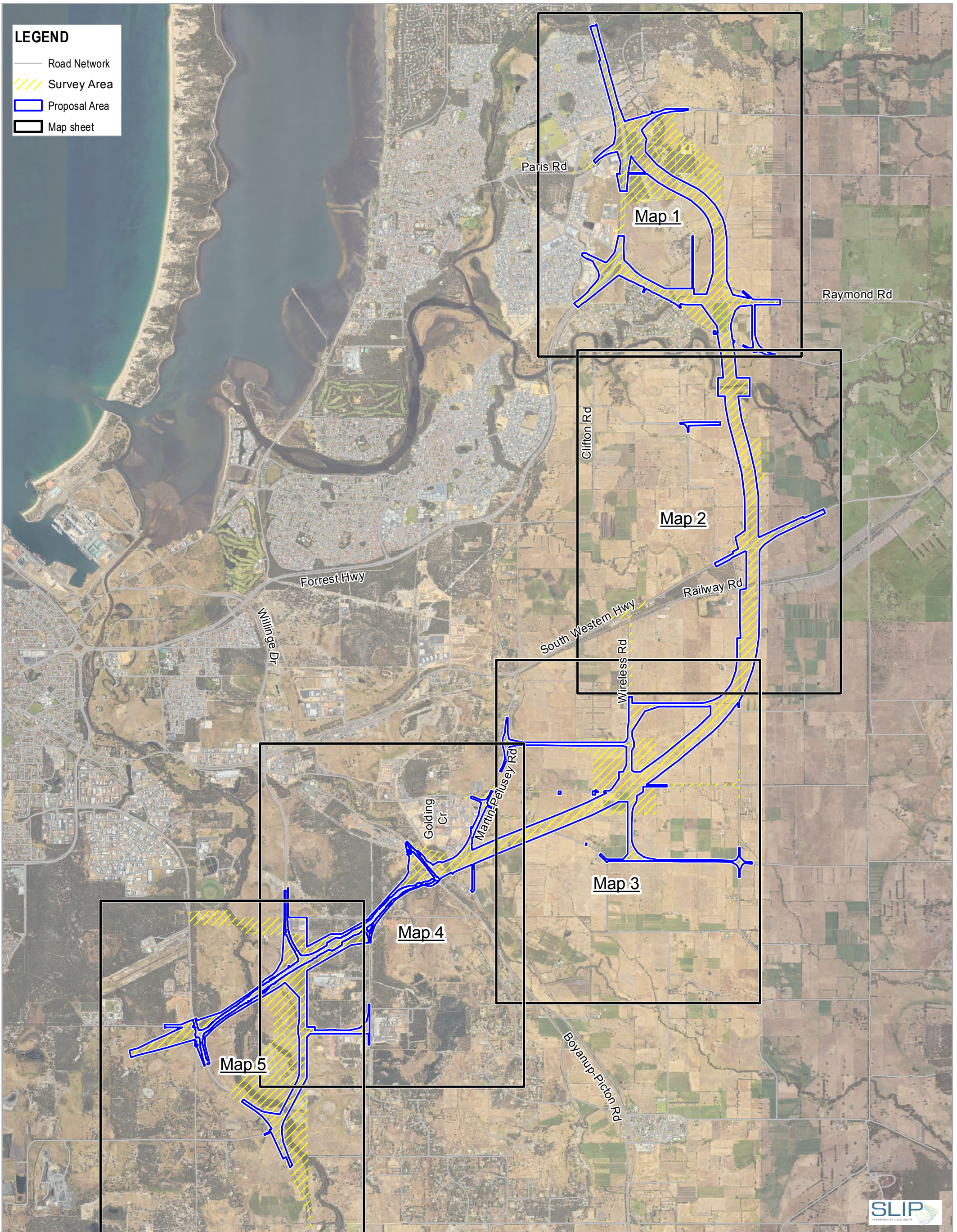
Figure 19 State Register and Municipal Inventory Places within 5 km of the Proposal Area

Figure 20 Existing land use

Figure 21 Forecast traffic noise $L_{Aeq, day}$ Existing 2018 noise levels at the most affected façade (dBA)

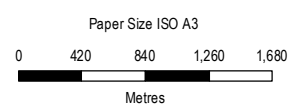
Figure 22 Forecast traffic noise $LA_{eq, day}$ Build 2041 noise levels at the most affected façade - No treatment

Figure 23 Forecast $LA_{eq, day}$ Build 2041 noise levels at the most affected façade - With barriers to meet the 60 dB noise limit at properties adversely affected by the new roads

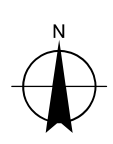


LEGEND

- Road Network
- ▨ Survey Area
- ▭ Proposal Area
- ▭ Map sheet



Paper Size ISO A3
 Map Projection: Transverse Mercator
 Horizontal Datum: GDA 1994
 Grid: GDA 1994 Perth Coastal Grid 1994



Main Roads Western Australia
Bunbury Outer Ring Road Northern and Central Section
Environmental Referral Supporting Document

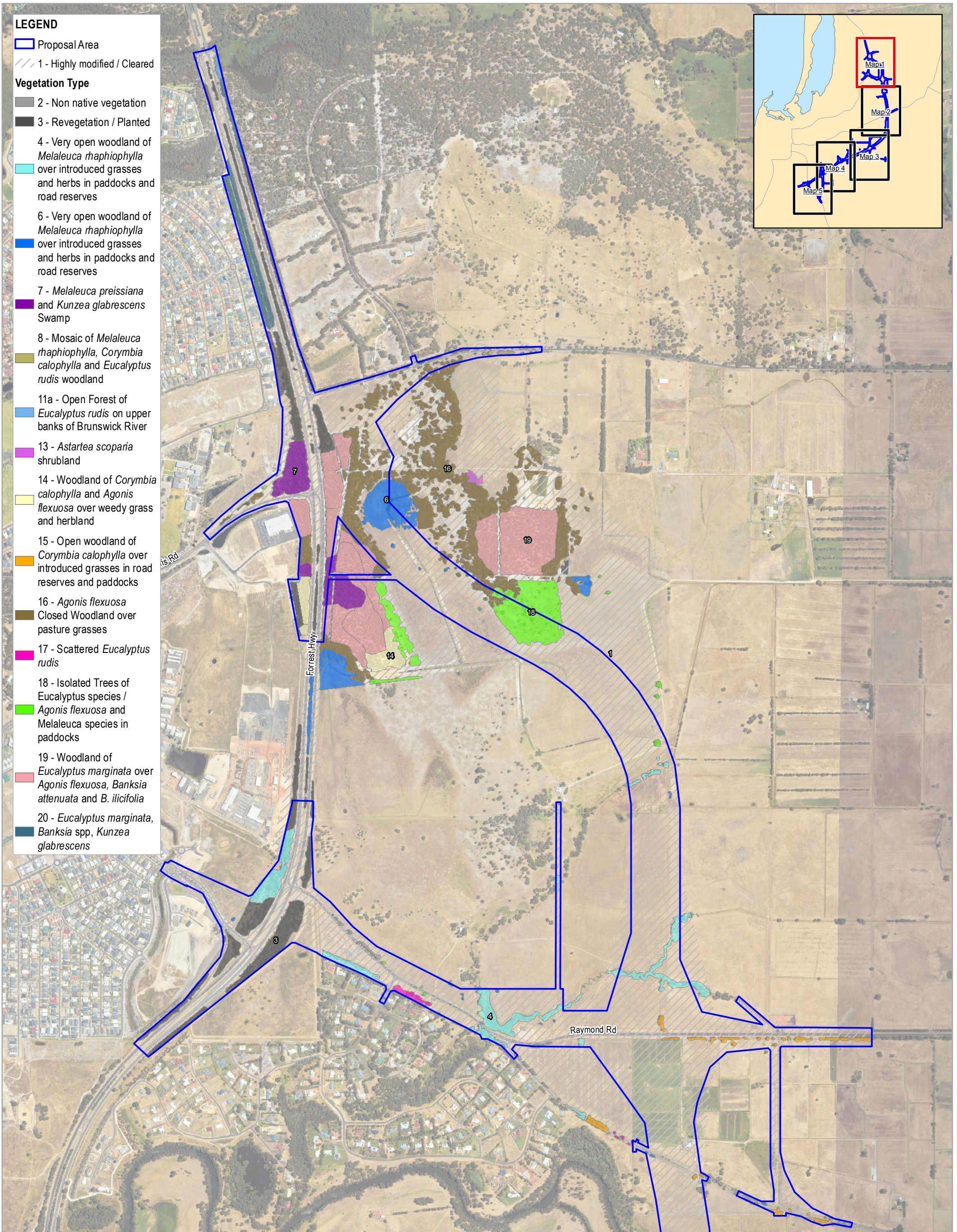
Project No. 61-37041
 Revision No. 0
 Date 09/05/2019

Vegetation Types

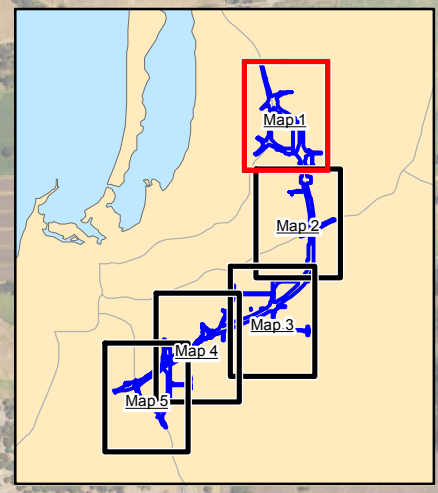
FIGURE 6
OVERVIEW

G:\6137041\119_0_GIS\Maps\Working\BORR North Environmental Referral Supporting Document\6137041_006_VegetationTypesOverview_Rev0.mxd
 Print date: 17 May 2019 - 15:22

Data source: Landgate: Road Network - 20180501, Imagery - accessed on 20190509; BORR: Proposal Area - 20190308, Survey Area - 20190122. Created by: nmmikonen



- LEGEND**
- Proposal Area
 - 1 - Highly modified / Cleared
- Vegetation Type**
- 2 - Non native vegetation
 - 3 - Revegetation / Planted
 - 4 - Very open woodland of *Melaleuca raphiophylla* over introduced grasses and herbs in paddocks and road reserves
 - 6 - Very open woodland of *Melaleuca raphiophylla* over introduced grasses and herbs in paddocks and road reserves
 - 7 - *Melaleuca preissiana* and *Kunzea glabrescens* Swamp
 - 8 - Mosaic of *Melaleuca raphiophylla*, *Corymbia calophylla* and *Eucalyptus rudis* woodland
 - 11a - Open Forest of *Eucalyptus rudis* on upper banks of Brunswick River
 - 13 - *Astartea scoparia* shrubland
 - 14 - Woodland of *Corymbia calophylla* and *Agonis flexuosa* over weedy grass and hermland
 - 15 - Open woodland of *Corymbia calophylla* over introduced grasses in road reserves and paddocks
 - 16 - *Agonis flexuosa* Closed Woodland over pasture grasses
 - 17 - Scattered *Eucalyptus rudis*
 - 18 - Isolated Trees of *Eucalyptus* species / *Agonis flexuosa* and *Melaleuca* species in paddocks
 - 19 - Woodland of *Eucalyptus marginata* over *Agonis flexuosa*, *Banksia attenuata* and *B. ilicifolia*
 - 20 - *Eucalyptus marginata*, *Banksia* spp., *Kunzea glabrescens*



SLIP
POWERED BY LUCIDATE

Paper Size ISO A3
0 100 200 300 400 500 600
Meters

Map Projection: Transverse Mercator
Horizontal Datum: GDA 1994
Grid: GDA 1994 Perth Coastal Grid 1994

Australian Government
BORR Team
BUILDING OUR FUTURE

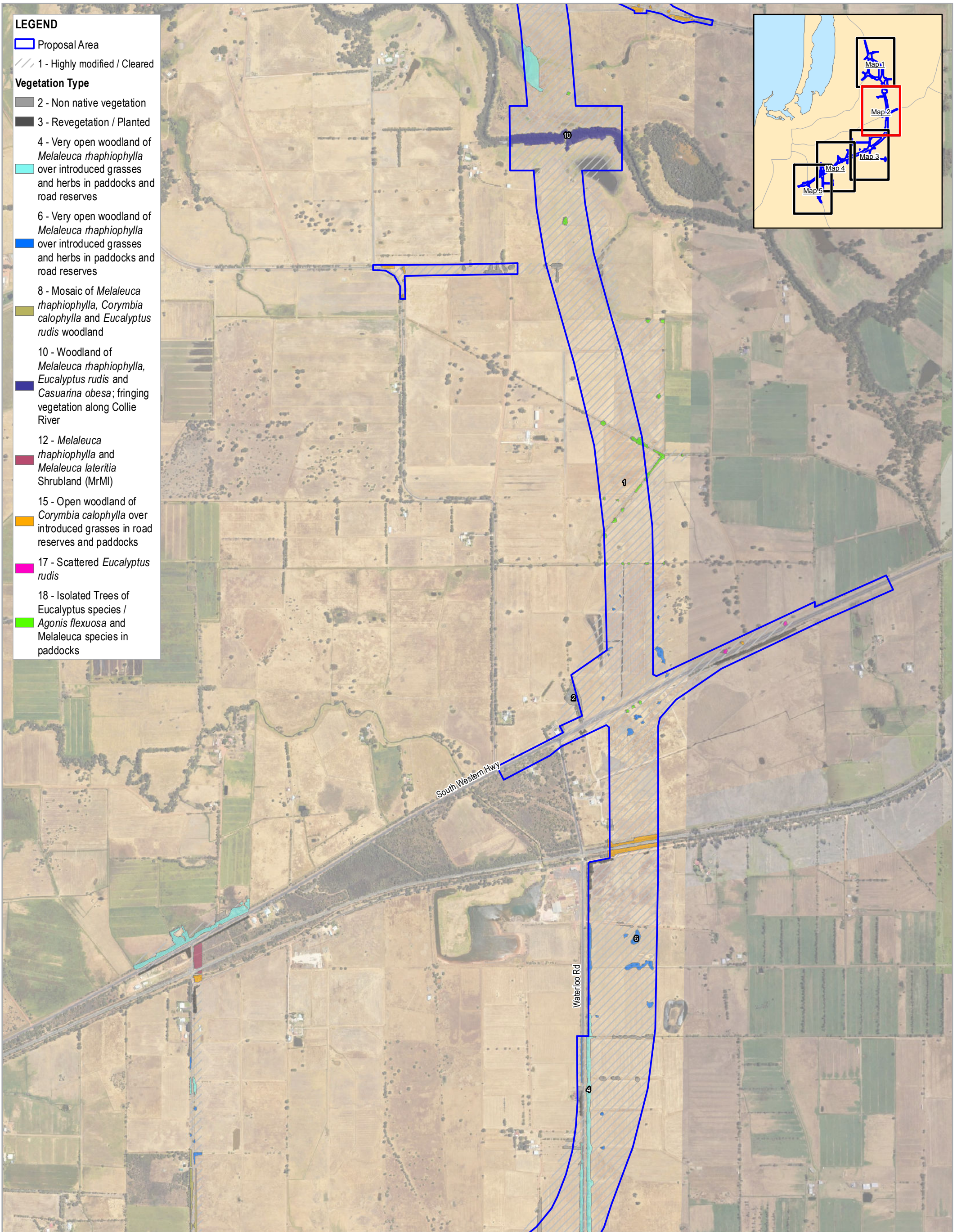
mainroads
WESTERN AUSTRALIA
SUNBURY OUTER RING ROAD | PLANNING AND DEVELOPMENT

Main Roads Western Australia
Bunbury Outer Ring Road Northern and Central Section
Environmental Referral Supporting Document

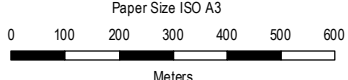
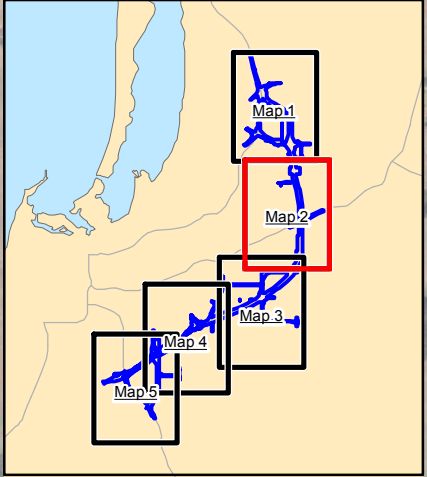
Vegetation Types

Project No. 61-37041
Revision No. 1
Date 09/05/2019

Page 1 of 5
FIGURE 6



- LEGEND**
- Proposal Area
 - 1 - Highly modified / Cleared
- Vegetation Type**
- 2 - Non native vegetation
 - 3 - Revegetation / Planted
 - 4 - Very open woodland of *Melaleuca raphiophylla* over introduced grasses and herbs in paddocks and road reserves
 - 6 - Very open woodland of *Melaleuca raphiophylla* over introduced grasses and herbs in paddocks and road reserves
 - 8 - Mosaic of *Melaleuca raphiophylla*, *Corymbia calophylla* and *Eucalyptus rudis* woodland
 - 10 - Woodland of *Melaleuca raphiophylla*, *Eucalyptus rudis* and *Casuarina obesa*; fringing vegetation along Collie River
 - 12 - *Melaleuca raphiophylla* and *Melaleuca lateritia* Shrubland (MrMI)
 - 15 - Open woodland of *Corymbia calophylla* over introduced grasses in road reserves and paddocks
 - 17 - Scattered *Eucalyptus rudis*
 - 18 - Isolated Trees of *Eucalyptus* species / *Agonis flexuosa* and *Melaleuca* species in paddocks



Map Projection: Transverse Mercator
Horizontal Datum: GDA 1994
Grid: GDA 1994 Perth Coastal Grid 1994



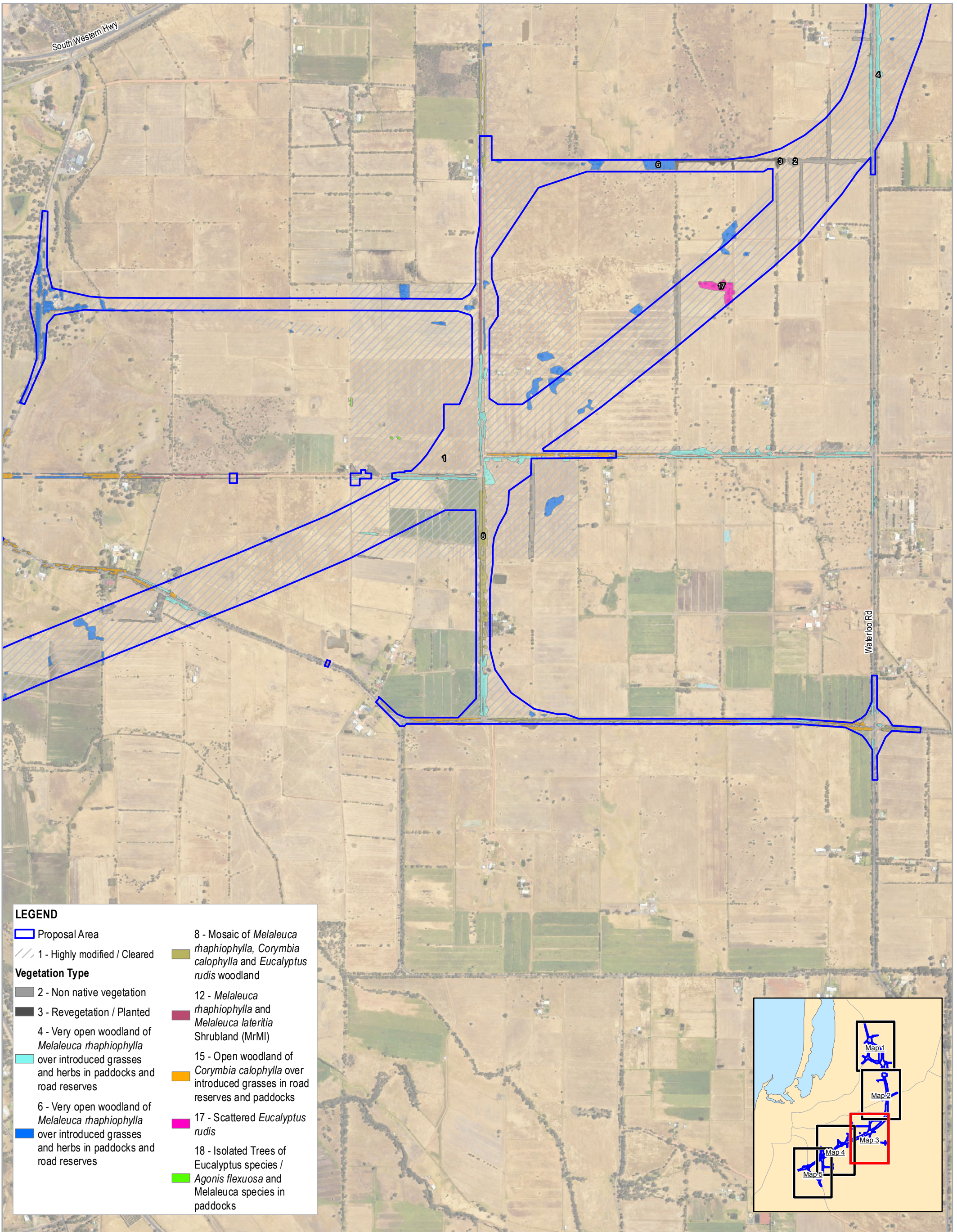
Main Roads Western Australia
Bunbury Outer Ring Road Northern and Central Section
Environmental Referral Supporting Document

Project No. 61-37041
Revision No. 1
Date 09/05/2019

Vegetation Types

Page 2 of 5

FIGURE 6



LEGEND

Proposal Area

1 - Highly modified / Cleared

Vegetation Type

2 - Non native vegetation

3 - Revegetation / Planted

4 - Very open woodland of *Melaleuca raphiophylla* over introduced grasses and herbs in paddocks and road reserves

6 - Very open woodland of *Melaleuca raphiophylla* over introduced grasses and herbs in paddocks and road reserves

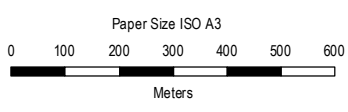
8 - Mosaic of *Melaleuca raphiophylla*, *Corymbia calophylla* and *Eucalyptus rudis* woodland

12 - *Melaleuca raphiophylla* and *Melaleuca lateritia* Shrubland (MrMI)

15 - Open woodland of *Corymbia calophylla* over introduced grasses in road reserves and paddocks

17 - Scattered *Eucalyptus rudis*

18 - Isolated Trees of *Eucalyptus* species / *Agonis flexuosa* and *Melaleuca* species in paddocks



Map Projection: Transverse Mercator
Horizontal Datum: GDA 1994
Grid: GDA 1994 Perth Coastal Grid 1994



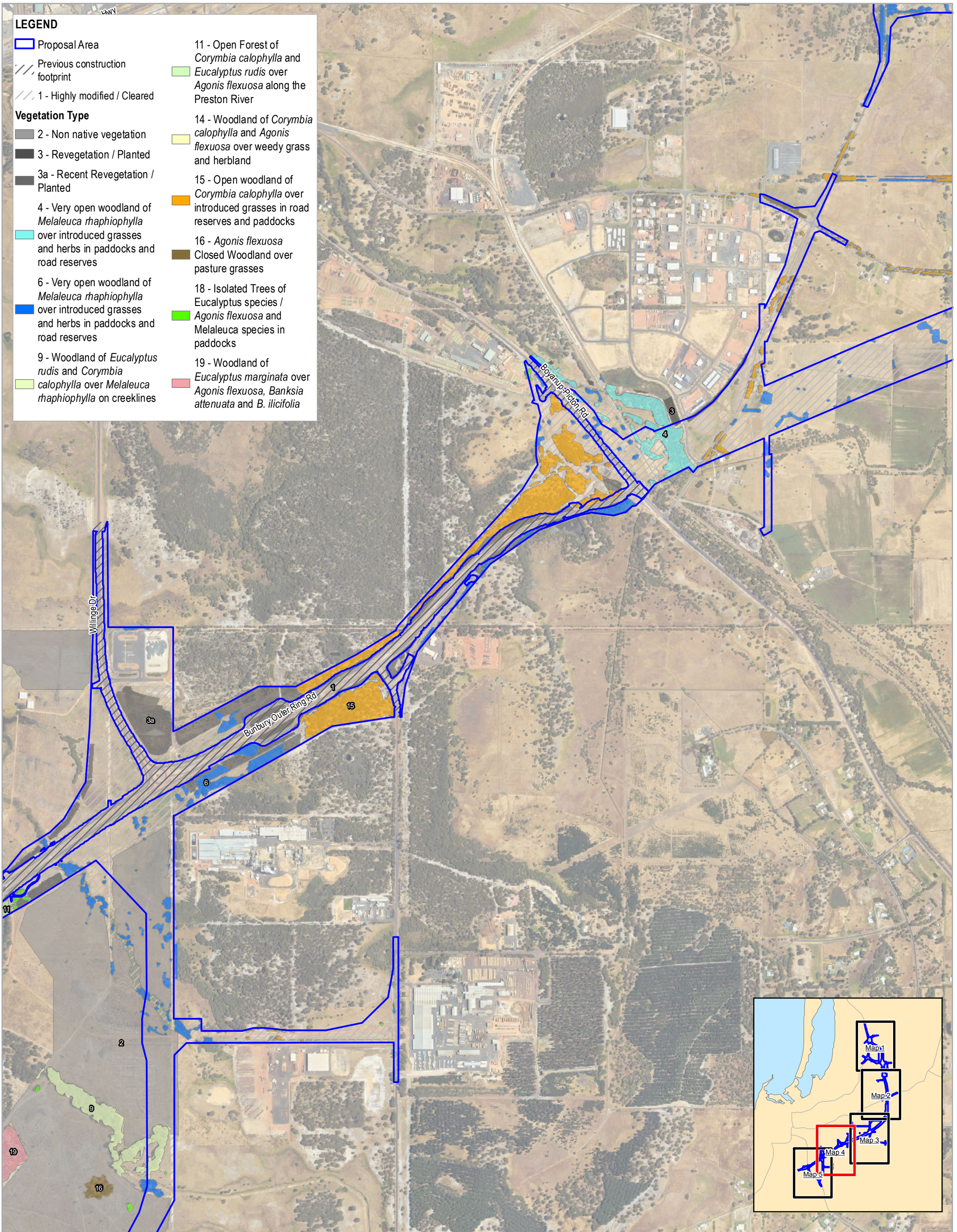
Main Roads Western Australia
Bunbury Outer Ring Road Northern and Central Section
Environmental Referral Supporting Document

Project No. 61-37041
Revision No. 1
Date 09/05/2019

Vegetation Types

Page 3 of 5

FIGURE 6



LEGEND

- Proposal Area
- Previous construction footprint
- 1 - Highly modified / Cleared

Vegetation Type

- 2 - Non native vegetation
- 3 - Revegetation / Planted
- 3a - Recent Revegetation / Planted
- 4 - Very open woodland of *Melaleuca raphiophylla* over introduced grasses and herbs in paddocks and road reserves
- 6 - Very open woodland of *Melaleuca raphiophylla* over introduced grasses and herbs in paddocks and road reserves
- 9 - Woodland of *Eucalyptus rudis* and *Corymbia calophylla* over *Melaleuca raphiophylla* on creeklines
- 11 - Open Forest of *Corymbia calophylla* and *Eucalyptus rudis* over *Agonis flexuosa* along the Preston River
- 14 - Woodland of *Corymbia calophylla* and *Agonis flexuosa* over weedy grass and herbland
- 15 - Open woodland of *Corymbia calophylla* over introduced grasses in road reserves and paddocks
- 16 - *Agonis flexuosa* Closed Woodland over pasture grasses
- 18 - Isolated Trees of *Eucalyptus* species / *Agonis flexuosa* and *Melaleuca* species in paddocks
- 19 - Woodland of *Eucalyptus marginata* over *Agonis flexuosa*, *Banksia attenuata* and *B. ilicifolia*

SLIP
POWERED BY LUCIDATA

Paper Size ISO A3
0 100 200 300 400 500 600
Meters

Map Projection: Transverse Mercator
Horizontal Datum: GDA 1994
Grid: GDA 1994 Perth Coastal Grid 1994

N

BORR Team
BUILDING OUR FUTURE

Australian Government

mainroads
WESTERN AUSTRALIA

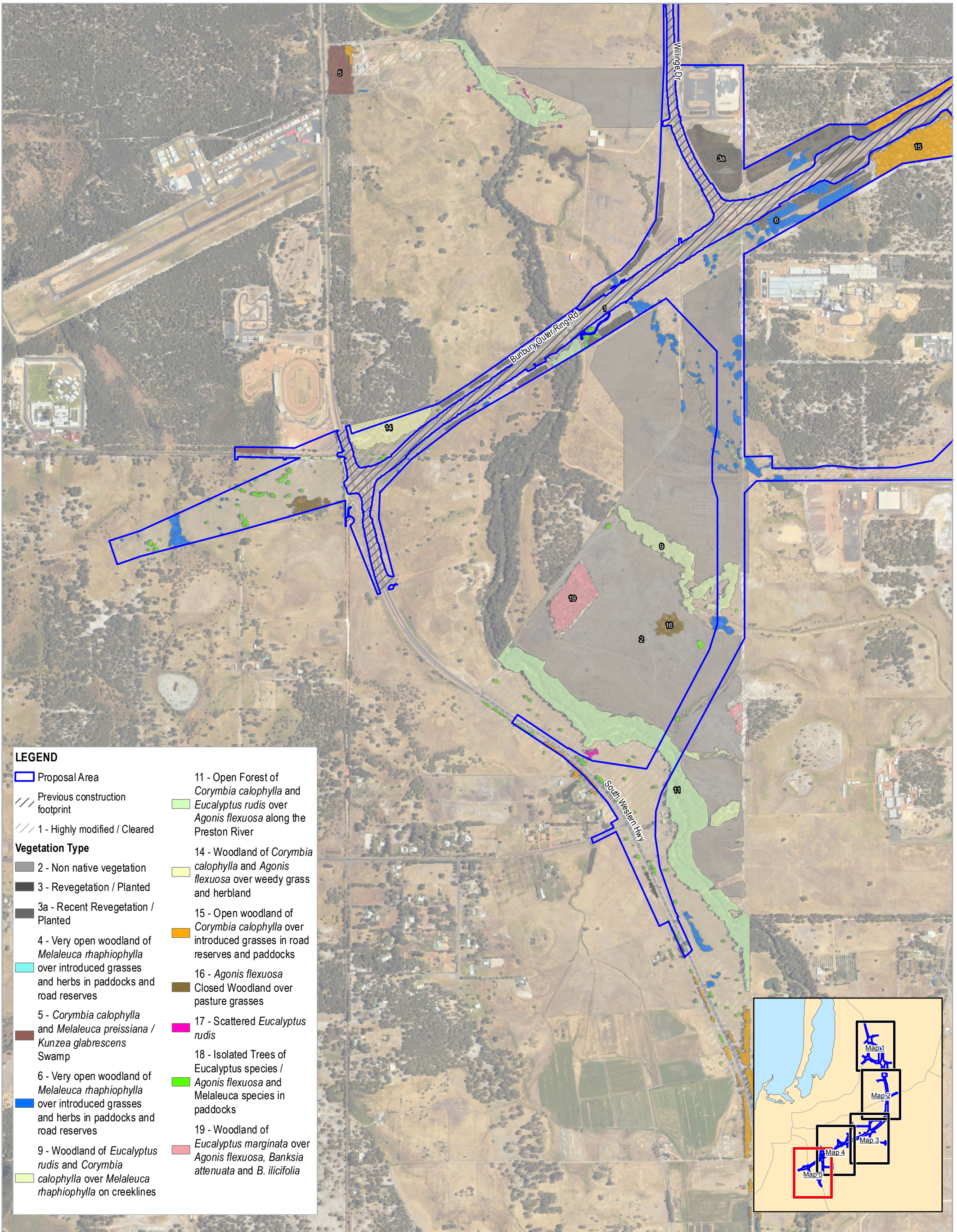
SUNBURY OUTER RING ROAD | PLANNING AND DEVELOPMENT

Main Roads Western Australia
Bunbury Outer Ring Road Northern and Central Section
Environmental Referral Supporting Document

Vegetation Types

Project No. 61-37041
Revision No. 1
Date 09/05/2019

Page 4 of 5
FIGURE 6

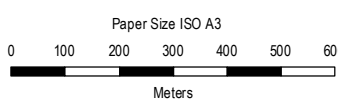
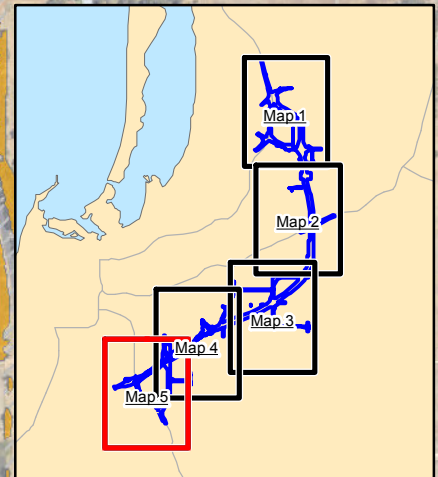


LEGEND

- Proposal Area
- Previous construction footprint
- 1 - Highly modified / Cleared

Vegetation Type

- 2 - Non native vegetation
- 3 - Revegetation / Planted
- 3a - Recent Revegetation / Planted
- 4 - Very open woodland of *Melaleuca raphiophylla* over introduced grasses and herbs in paddocks and road reserves
- 5 - *Corymbia calophylla* and *Melaleuca preissiana* / *Kunzea glabrescens* Swamp
- 6 - Very open woodland of *Melaleuca raphiophylla* over introduced grasses and herbs in paddocks and road reserves
- 9 - Woodland of *Eucalyptus rudis* and *Corymbia calophylla* over *Melaleuca raphiophylla* on creeklines
- 11 - Open Forest of *Corymbia calophylla* and *Eucalyptus rudis* over *Agonis flexuosa* along the Preston River
- 14 - Woodland of *Corymbia calophylla* and *Agonis flexuosa* over weedy grass and hermland
- 15 - Open woodland of *Corymbia calophylla* over introduced grasses in road reserves and paddocks
- 16 - *Agonis flexuosa* Closed Woodland over pasture grasses
- 17 - Scattered *Eucalyptus rudis*
- 18 - Isolated Trees of *Eucalyptus* species / *Agonis flexuosa* and *Melaleuca* species in paddocks
- 19 - Woodland of *Eucalyptus marginata* over *Agonis flexuosa*, *Banksia attenuata* and *B. ilicifolia*



Map Projection: Transverse Mercator
Horizontal Datum: GDA 1994
Grid: GDA 1994 Perth Coastal Grid 1994



Main Roads Western Australia
Bunbury Outer Ring Road Northern and Central Section
Environmental Referral Supporting Document

Project No. 61-37041
Revision No. 1
Date 09/05/2019

Vegetation Types