

Martinick Bosch Sell Pty Ltd

4 Cook Street
West Perth WA 6005
Phone: (08) 9226 3166
Email: info@mbsenvironmental.com.au
Web: www.mbsenvironmental.com.au

3 July 2025

Zenith Energy
52 Belmont Avenue,
Rivervale WA, 6103

Attention: Tony Holmes

Dear: Tony

Re: Baseline Contamination Assessment Memo for the Thermal Power Plant Project

Martinick Bosch Sell Pty Ltd (MBS Environmental, MBS) were engaged by Zenith Energy to conduct a baseline contamination assessment on Mining Tenements M26/383 and M26/131. The purpose of the assessment is to provide baseline soil chemical information for the proposed disturbance areas to determine baseline concentrations prior to the commencement of construction works associated with the Thermal Power Project (the Project).

1. Background

Zenith Energy (Zenith) is working with Northern Star Resources (Northern Star) to develop additional power supply sources for the KCGM operations which are located in Kalgoorlie in Western Australia. Zenith and Northern Star have identified supplementing the existing aging 110-MW natural gas thermal power supply at Parkeston with a new thermal power generation facility with a capacity of circa 120 MW. The facility will consist of the Power Station, Substation and Transmission lines.

The proposed Power Station is located within Mining Act Tenure M26/383 on Yarri Road, Williamstown. The proposed Substation to be constructed on the corner of Yarri Road and Black Street, Williamstown, on tenements M26/131 and M26/383. Underground and overhead Transmission Lines are to be constructed adjacent to Yarri Road, Black Street and Bulong Road on Mining Act tenure.

A sampling and analysis plan (SAP) was developed by MBS (2025) detailing the soil sampling program and methodologies required to be undertaken within the proposed project footprint area (Figure 1). The soil sampling was conducted by geotechnical consultants from Galt Geotechnics (Galt) on the 23 and 24 May 2025, from which samples were sent to MBS for selection of samples for analysis in accordance with contamination site guidelines from the Department of Water and Environmental Regulation (DWER). The relevant guidelines include:

- Schedule B1 – Investigation Levels for Soil and Groundwater, as amended May 2013 (NEPC, 2013a).

- Schedule B2 – Guideline on Site Characterisation, as amended May 2013 (NEPC, 2013b).
- Guideline for the Assessment and Management of Contaminated Sites in Western Australia (DWER, 2021).

2. Scope of Works

In order to characterise the baseline soil chemistry within the Project area in accordance with the relevant guidelines, the scope of work consisted of the following:

- Examination of soil samples prior to forwarding onto MPL Laboratories which are accredited under the National Association of Testing Authorities (NATA) program along with Chain of Custody (CoC) documentation.
- Preparation of a Baseline Contamination Assessment memo to include:
 - Collation of information/field logging and photos from site sampling.
 - Summary of key physical and chemical characteristics of surface soils and subsoils.
 - Assessment of analytical results against DWER's Contaminated Site Guidelines (DWER, 2021).



Scale: 1: 30,000
 Original Size: A4
 Grid: GDA2020 / MGA zone 51
 (EPSG:7851)
 0 0.5 1 km






Legend	
	Proposed Power Plant Location
	Proposed Substation Location
	Proposed Transmission Line
	State Road
	Local Road

Figure 1
Proposed Power Station Location



3. Project Setting

A summary of the environmental setting for the Project is provided in Table 1.

Table 1: Summary of Environmental Setting

Feature	Description
Climate	<p>Temperatures range from a mean maximum of 33.7°C in summer and drop to a mean maximum of 16.8°C in winter.</p> <p>Mean minimum temperatures follow a similar trend and range from 18.3°C in summer to 5.1°C in winter.</p> <p>Annual rainfall varies between 108 and 530 mm with an average of 266 mm (BoM, 2024). Rainfall occurs during all months of the year.</p> <p>Pan evaporation rates exceed average rainfall rates for every month of the year and the average annual pan evaporation is 2,646 mm, approximately 10 times the average annual rainfall (Ramboll, 2023).</p>
Vegetation	<p>The Project is located within the Interim Biogeographic Regionalisation of Australia (IBRA) Eastern Goldfields subregion (COO3) of the Coolgardie bioregion.</p> <p>The Power Station and proposed Substation area are mapped as rehabilitation/dust abatement areas comprising of a mosaic of native and non-local species. No significant flora was identified in the powerplant options or substation area under consideration by Zenith.</p> <p>Vegetation along the Transmission Route is disturbed, mostly cleared vegetation.</p> <p>There are no conservation reserves or Environmentally Sensitive Areas (ESAs) within 50 km of the Power Station, Substation or Transmission Route.</p>
Land System and Soils	<p>The power plant options are all located in the Gumland Disturbed land system (265GmX-Disturbed).</p> <p>The Gumland system is described as extensive pediplains supporting eucalypt woodlands with halophytic and non-halophytic shrub understoreys. Alluvial plains are the dominant landform, with geology dominated by quaternary colluvium and alluvium.</p> <p>Calcareous loamy earths, red loamy earths and red sandy duplexes are the dominant soil types.</p>
Hydrology	<p>The Project lies within the Salt Lake hydrogeological region that comprises numerous drainage systems flowing to terminal Salt Lake systems, clay pans and other natural surface depressions.</p> <p>The major drainage in the area is the Eastern Floodway which is part of the Hannan Catchment which drains an area of about 230 km² with runoff flowing to Hannan Lake which is south of the area of interest.</p> <p>The Eastern Floodway only flows after heavy rainfall events that occur on a frequency of less than once per year. Flow conveyance along the Eastern Floodway is controlled by floodways (low-lying road sections designed to overtop during flood events) across Bulong Road, the TSF Haul Road connecting Kaltails and Fimiston II TSFs to the Fimiston WRDs, and Mt Monger Road.</p> <p>Stormwater flow through the Eastern Floodway tributary network is controlled by several sets of culverts beneath Bulong Road, the raised TAR embankment, and the Kaltails Haul Road at several locations (WSP, 2023).</p>

3.1 Historical Aerial Review

A review of publicly available historical aerial imagery (Google Earth, 2025) of the project area was undertaken. Key points for each area are provided below.

3.1.1 Proposed Power Station Area

The earliest available imagery of the area surrounding the proposed power station from 1963 shows the area as appearing as moderately disturbed, with a network of vehicle tracks that appear to pass through the site. Landuse of the site itself is not visible during this time, however, local knowledge indicates an active mining shaft was present.

In later imagery from 2000, the area appears largely undisturbed, covered in shallow grasses, shrubs and scattered trees within the western and southeastern portion of the site, which coincides knowledge of rehabilitation within this area. Evidence of the old mining shaft is visible with the presence of concrete padding and footings in the central western portion of the site. Scattered debris and anthropogenic waste are evident within the southern portion of the site.

In 2009, minor disturbance is noted in the central portion of the site through the presence of vehicle access tracks and backfilling of the historical mining shaft (Plate 1).

The area appears to have undergone minimal change from 2009 onwards.



Plate 1: Historical Aerial of Proposed Power Plant Area 2009

3.1.2 Proposed Substation Area

The earliest available image (1963) of the southwestern portion of the area indicates the area is largely undisturbed, with shallow grasses, scattered shrubs and minor trees the main vegetation types

In 2003, disturbance is evident along the northern and eastern portions of the area. A portion of the vegetation has been cleared to make way for road upgrades (Plate 2).

Between 2003 and 2006, the disturbed area has been rehabilitated with conditions from 2006 reflective of current conditions.



Plate 2: Historical Aerial of Proposed Substation Area 2003

3.1.3 Bulong Road Transmission Route Area

The earliest available imagery from 2000, identifies the presence of a railway track which passes through Yarri Rd and Bulong Road, which is consistent with present day conditions. Additionally, electrical transmission lines area evident along Bulong Road and Yarri Road (Plate 3).

No buildings are present within the transmission route corridor between 2000 to 2025.



Plate 3: Historical Aerial of Transmission Route Along Bulong Road 2000

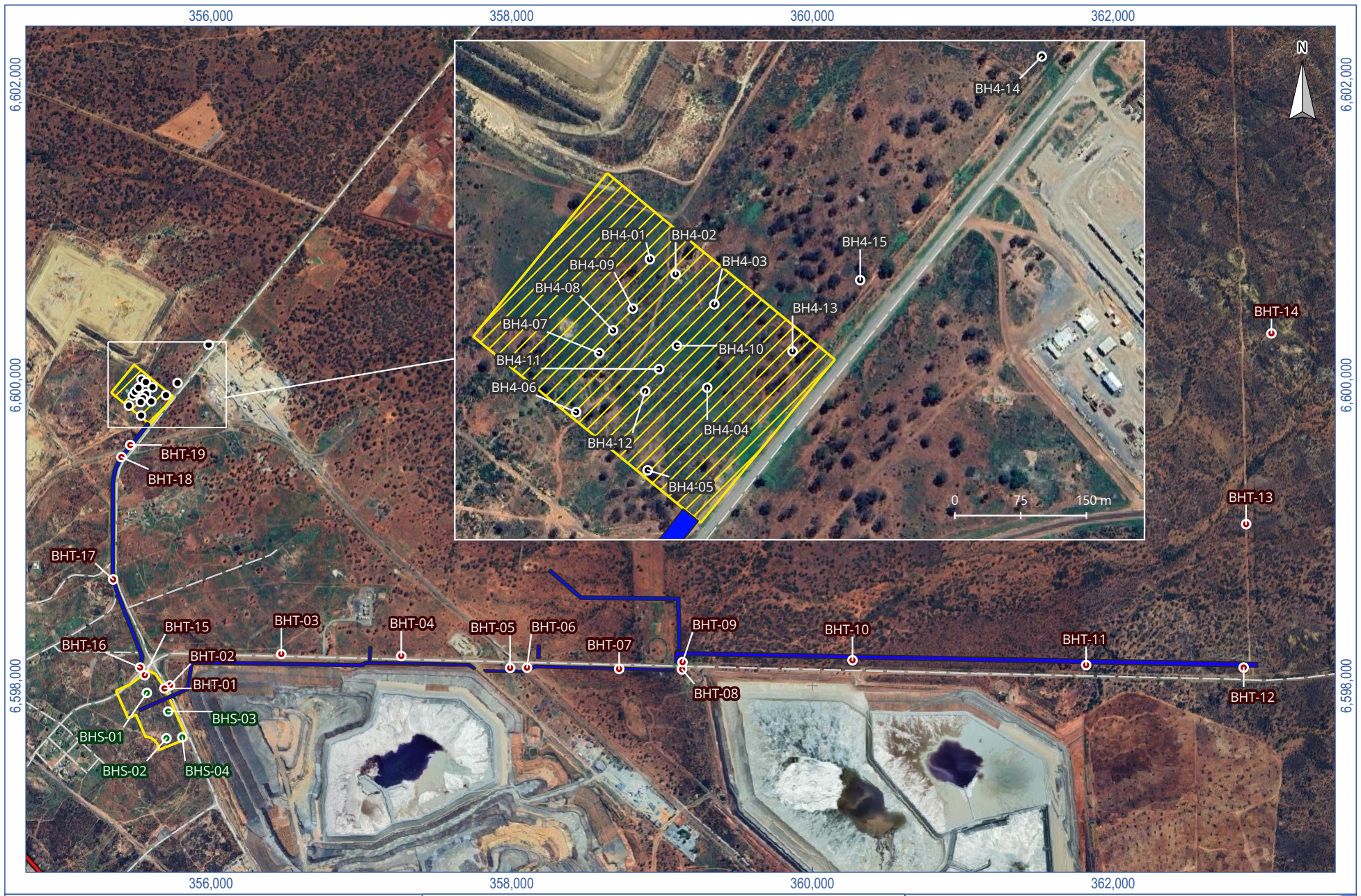
4. Baseline Contamination Assessment

4.1 Sampling Methodology

On the 23 and 24 May 2025, Galt personnel collected 70 surface and subsurface soil samples from within the proposed disturbance footprint of the project area in accordance with the SAP (MBS, 2025). These locations are shown in Figure 2. Soil samples were collected from core samples during a geotechnical drilling program using a direct push drill rig.

A summary of the sampling methodology is as follows:

- Thirty samples were collected from 15 locations from within the Power Station footprint, labelled BH4-01 to BH4-15. Two samples were collected per location from surface soils at 0.1 m below ground level (mbgl) and subsurface soils at 0.5 mbgl.
- Eight samples were collected from four locations from within the Substation footprint, labelled BHS-01 to BHS-04. Two samples were collected per location at 0.1 mbgl and 0.5 mbgl.
- Thirty-two samples were collected from 16 locations from within the Transmission Route footprint, labelled BHT-01 to BHT-07, BHT-09 to BHT-17. Two samples were collected per location at 0.1 mbgl and 0.5 mbgl. Soil profiles were logged from an additional two locations, BHT-18 and BHT-19, however, no samples were collected.



Scale: 1: 35,000
 Original Size: A4
 Grid: GDA2020 / MGA zone 51
 (EPSG:7851)
 0 0.5 1 km

Legend	
	Proposed Transmission Line
	Proposed Power Plant Area
	Proposed Substation Area
Boreholes (Sample Areas)	
	BH4
	BHT
	BHS

Figure 2
Sample Locations



4.2 Field Logs and Observations

Field logs from Galt are provided in Appendix A, with a summary of observations for each investigation area outlined below.

4.2.1 Proposed Power Station Area

Soils are predominantly red brown (Plate 4) and consist of the following textures:

- Clayey sands.
- Sandy clays.
- Silty clays.
- Gravelly silts.
- Gravelly clays.

The landscape appeared relatively flat and consistent with historical use as an old rehabilitation area, comprising low lying shrubs and scattered native trees.

An old, decommissioned mining shaft, dam, remnants of concrete pad/footings, and some anthropogenic waste in the form of empty rusty drums and tubs were noted at the surface (Plate 5).

No staining, odours or likely asbestiform containing material (ACM) were noted at any location.



Plate 4: Soil Profile of BHS-01 (Left) and BHS-02 (Right)



Plate 5: Proposed Power Plant Area facing Southwest (Left), and Old Mine Shaft (Right)

4.2.2 Proposed Substation Area

The soil profile was consistent with those at the proposed Power Station area (Section 4.2.1). Hardpan/duricrust materials were also present within the area.

No staining, odours or ACM were noted at any location.

A portion of the site appeared to be near an old mining shaft, with some anthropogenic waste noted at the surface near BH4-04 and BH4-12.

The remainder of the site appeared to be natural bush and near an existing powerline corridor.

4.2.3 Transmission Route

The soil profile was consistent with those at the proposed Power Station area (Section 4.2.1) and proposed Substation area (4.2.2). Highly weathered granite materials were also observed at this location. The soil profile for BHT-18 is shown in Plate 6.

The majority of the proposed transmission route is situated along the existing powerline corridor or road reserves along Yarri Street, Black Street and Bulong Road.

Anthropogenic waste and concrete remnants of were noted at the surface near BHT-12, BHT-16 and BHT-19.

An old, decommissioned mine shaft was present near BHT-15.

No staining, odours or ACM were noted at any location.



Plate 6: Location and Soil Profile of BHT-18

5. Laboratory Analyses and Assessment Criteria

Determination of total concentrations of Contaminants of Potential Concern (CoPCs) were conducted by MPL Laboratories (Myaree, WA) which is a NATA accredited laboratory. Samples selected for analysis of CoPCs were based on the preliminary desktop assessment as well as visual and olfactory field observations.

5.1 Laboratory Analyses

A summary of the laboratory analyses used in the assessment are provided in Table 2.

Table 2: Laboratory Analysis

	Total Metal(loid)s	Organics		Soil Characteristics	
Details	As, Cd, Cr, Cu, Pb, Ni and Zn via aqua regia digestion	<ul style="list-style-type: none"> Total Recoverable Hydrocarbons (TRH) Benzene, Toluene, Ethyl Benzene and Xylenes (BTEX) Polycyclic Aromatic Hydrocarbons (PAH) Organochlorine Pesticides (OCP) Polychlorinated biphenyls (PCB) 		<ul style="list-style-type: none"> Cation Exchange Capacity (CEC) Total Organic Carbon (TOC) clay content (%) pH iron (Fe) 	
Project Areas	<ul style="list-style-type: none"> Power Plant, Substation Transmission Route 	<ul style="list-style-type: none"> Power Plant 	<ul style="list-style-type: none"> Substation 	<ul style="list-style-type: none"> Power Plant Substation Transmission Route 	
No. Samples	70	5	3	2 (composites)	
Sample IDs	<ul style="list-style-type: none"> All Samples 	<ul style="list-style-type: none"> BH4-01-SUR BH4-05-SUR BH4-06-SUR BH4-07-SUR BH4-11-SUR 	<ul style="list-style-type: none"> BHS-01-SUR BHS-02-SUR BHS-03-SUR 	<ul style="list-style-type: none"> Composite 1 (BH4-02, 03, 04, 07, 08) 	<ul style="list-style-type: none"> Composite 2 (BHT-12, 13, 14, 15)

5.2 Adopted Assessment Criteria

In order to establish baseline contamination conditions within the footprint of the Project area, all samples were compared to the following default environmental criteria outlined in Table 3.

Table 3: Summary of Adopted Contamination Assessment Criteria

Default Guideline	Conceptual Receptor	Comments
NEPM (NEPC, 2013a) Health Investigation Levels for Commercial/ Industrial Land use	Site Workers	Tier 1 risk assessment of potential risks to human health from chronic exposure to contaminants
Soil Saturation Concentration (Csat) (NEPM 2013)		
Management Limits - Commercial and Industrial (NEPM 2013a)		
NEPM (NEPM, 2013a) Site-specific Ecological Investigation Limits (EIL) for Commercial/ Industrial Land use	Flora and fauna within the Project area	Tier 1 assessment of risk from contaminants to terrestrial ecosystems
Ecological Screening Limit - Commercial / Industrial (NEPM 2013)		

6. Results

A total of 70 samples from the footprint of the project area were analysed for concentrations of metals and compared to the default environmental criteria outlined in Section 5.2. These results are

summarised in Table 4 for the Power Station footprint, Table 5 for the Substation footprint, and Table 6 for the footprint of the Transmission Route, with the full dataset provided in Appendix B.

Table 4: Summary of Total Elemental Concentrations in Power Station Samples

Analyte	Mean (mg/kg)	Range (mg/kg)	Background Conc (mg/kg)	NEPM EIL (mg/kg)	NEPM HIL (mg/kg)
As	16	9.4-35	20	180	3,000
Cd	<0.4	<0.4	<0.4	3	900
Cr	309	120-470	350	1,190	N/L
Cu	56	34-89	65	435	240,000
Pb	13	6.2-24	16.2	1,816	1,500
Hg	0.1	<0.1-0.3	0.3	1	730
Ni	69	30-130	79.2	579	6,000
Zn	74	30-210	68	1,168	400,000

NEPM 2013 Health Investigation Levels (HIL) for Commercial/Industrial land use and NEPM (NEPC, 2013) Site-specific Ecological Investigation Limits (EIL) for Commercial/Industrial land use.

ND = Not Determined.

N/L = Not Limiting

Key results for the proposed Power Station area include:

- Concentrations of As, Cd, Cr, Cu, Pb, Hg, Ni and Zn for all BH4 samples were reported below the relevant contamination assessment criteria.
- Concentrations of TRH, PAHs, BTEX, OCPs and PCBs were reported below the Laboratory Limit of Reporting (LOR), and therefore concentrations were all below relevant assessment criteria.

Table 5: Summary of Total Elemental Concentrations in Substation Samples

Analyte	Mean (mg/kg)	Range (mg/kg)	Background Conc (mg/kg)	NEPM EIL (mg/kg)	NEPM HIL (mg/kg)
As	31	<4-61	20	180	3,000
Cd	<0.4	<0.4	<0.4	3	900
Cr	216	77-340	350	1,190	N/L
Cu	46	6.6-72	65	435	240,000
Pb	13	2.8-20	16	1,816	1500
Hg	0.3	<0.1-0.6	0.29	1	730
Ni	47	8.8-78	79	579	6,000
Zn	40	4.8-69	68	1,168	400,000

NEPM 2013 Health Investigation Levels (HIL) for Commercial/Industrial land use and NEPM (NEPC, 2013) Site-specific Ecological Investigation Limits (EIL) for Commercial/Industrial land use.

ND = Not Determined.

N/L = Not Limiting

Key results for the proposed Sub Station area were:

- Concentrations of As, Cd, Cr, Cu, Pb, Hg, Ni and Zn for all BHS samples were reported below the relevant contamination assessment criteria.
- Concentrations of TRH, PAHs, BTEX, OCPs and PCBs were reported below the Laboratory Limit of Reporting (LOR), and therefore concentrations were all below relevant assessment criteria.

Table 6: Summary of Total Elemental Concentrations in Transmission Route Samples

Analyte	Mean (mg/kg)	Range (mg/kg)	Background Conc (mg/kg)	NEPM EIL (mg/kg)	NEPM HIL (mg/kg)
As	13	6-27	20	180	3,000
Cd	<0.4	<0.4	<0.4	3	900
Cr	298	96-640	350	1,190	N/L
Cu	46	26-120	65	435	240,000
Pb	15	7-47	16	1,816	1,500
Hg	0.19	0.1-0.6	0.29	1	730
Ni	68	29-160	79	579	6,000
Zn	42	19-150	68	1,168	400,000

NEPM 2013 Health Investigation Levels (HIL) for Commercial/Industrial land use and NEPM (NEPC, 2013) Site-specific Ecological Investigation Limits (EIL) for Commercial/Industrial land use.

ND = Not Determined.

N/L = Not Limiting

Key results for the proposed transmission lines were:

- Concentrations of As, Cd, Cr, Cu, Pb, Hg, Ni and Zn for all BH4 samples were reported below the relevant contamination assessment criteria.

7. Summary

Based on the desktop assessment and above results, concentrations of all metal(loid) and organic CoPCs are well below the relevant human health and environmental criteria utilised in this assessment. Consequently, soil disturbances in all three areas are highly unlikely to result in health concerns for workers or environmental effects for native flora and fauna.

Yours sincerely

MBS Environmental



Elodie Payet

Environmental Scientist

8. References

BoM, (Bureau of Meteorology) (2024) *Average annual, monthly and seasonal evaporation maps, Bureau of Meteorology*. Available at: <http://www.bom.gov.au/climate/maps/averages/evaporation/>.

DWER, (Department of Water and Environmental Regulation) (2021) 'Guideline: Assessment and Management of Contaminated Sites'. Government of Western Australia.

Google Earth (2025) *Google Earth Satellite Viewing*.

NEPC, (National Environmental Protection Council) (2013a) *Schedule B1: Guideline on Investigation Levels for Soil and Groundwater*. CSIRO Publishing (National Environmental Protection (Assessment of Site Contamination) Measure 1999).

NEPC, (National Environmental Protection Council) (2013b) *Schedule B2: Guideline on Site Characterisation*. Commonwealth of Australia (National Environmental Protection (Assessment of Site Contamination) Measure 1999).

Ramboll, (Ramboll Australia) (2023) *Fimiston South Project Qualitative Air Quality Impact Assessment*. Report prepared for Kalgoorlie Consolidated Mines Pty Ltd.

WSP, (WSP Environmental Pty Ltd) (2023) *Hydrological Assessment of Eastern Floodway*. Report prepared for Kalgoorlie Consolidated Mines Pty Ltd.

APPENDIX A:
GALT GEOTECHNIC FIELD LOGS

APPENDIX A



Proposed Test Locations - GDA_1994_MGA_Zone_51

Name	Type	Target Depth (m)	Borehole Test Depth (m)	DPSH Test Depth (m)	Thermal Resistivity	Eletrical Resistivity	MGA_E	MGA_N	GROUP	Original Name
BH4-01	MA/DPSH	1.5	1.5	TBC			355535	6600036	Area 4	BH4-01
BH4-02	MA/DPSH	1.5	1.5	TBC			355565	6600019	Area 4	BH4-02
BH4-03	MA/DPSH	1.5	1.5	TBC			355609	6599984	Area 4	BH4-03
BH4-04	MA/DPSH	1.5	1.0	TBC			355601	6599889	Area 4	BH4-04
BH4-05	MA/DPSH	1.5	2.0	TBC			355533	6599795	Area 4	BH4-05
BH4-06	MA/DPSH	1.5	2.0	TBC			355451	6599861	Area 4	BH4-06
BH4-07	MA/DPSH	3	1.2	TBC			355478	6599929	Area 4	BH4-10
BH4-08	MA/DPSH	3	3.0	TBC			355420	6599992	Area 4	BH4-11
BH4-09	MA/DPSH	3	3.0	TBC			355516	6599980	Area 4	BH4-12
BH4-10	MA/DPSH	3	1.0	TBC			355566	6599937	Area 4	BH4-13
BH4-11	MA/DPSH	3	3.0	TBC	X	X	355673	6599946	Area 4	BH4-14
BH4-12	MA/DPSH	3	3.0	TBC			355530	6599885	Area 4	BH4-15
BH4-13	MA/DPSH	3	2.4	TBC			355493	6600098	Area 4	BH4-18
BH4-14	MA/DPSH	3	2.0	TBC	X	X	355982	6600267	Area 4	BH4-19
BH4-15	MA/DPSH	3	1.6	TBC	X	X	355775	6600012	Area 4	BH4-20
BHS-01	HQ3	6	6.0	TBC		X	355571	6597950	Substation	BHS-01
BHS-02	HQ3	6	6.0	TBC		X	355701	6597648	Substation	BHS-02
BHS-03	MA/DPSH	4.5	0.3	TBC			355713	6597826	Substation	BHS-04
BHS-04	MA/DPSH	4.5	0.4	TBC			355807	6597655	Substation	BHS-07
BHT-01	MA (change to HQ3)	2	2.0	TBC	X		355688	6597980	Substation	BHT-01
BHT-02	MA	2	1.0	TBC			355725	6598000	Substation	BHT-02
BHT-03	MA	2	2.0	TBC	X	X	356466	6598209	Substation	BHT-03
BHT-04	MA	2	2.0	TBC	X	X	357264	6598196	Substation	BHT-04
BHT-05	HQ3	6	6.0	TBC			357988	6598116	Transmission Line Central	BHT-05
BHT-06	HQ3	6	6.0	TBC			358100	6598118	Transmission Line Central	BHT-06
BHT-07	MA	2	2.0	TBC	X	X	358713	6598110	Transmission Line Central	BHT-07
BHT-08	HQ3	5	6.0	TBC			359132	6598107	Transmission Line Central	BHT-08
BHT-09	HQ3	5	6.0	TBC			359135	6598155	Transmission Line Central	BHT-09
BHT-10	MA	2	3.0	TBC	X		360266	6598168	Transmission Line Central	BHT-10
BHT-11	MA	2	3.0	TBC	X	X	361820	6598135	Transmission Line Central	BHT-11
BHT-12	MA	2	0.5	TBC	X		362869	6598119	Transmission Line Central	BHT-12
BHT-13	MA	2	0.4	TBC	X	X	362885	6599073	Transmission Line Central	BHT-16
BHT-14	MA	2	2.0	TBC	X		363053	6600342	Transmission Line Central	BHT-17
BHT-15	HQ3	5	8.0	TBC	X		355557	6598068	Transmission Line West	BHT-20
BHT-16	HQ3	5	8.0	TBC			355526	6598119	Transmission Line West	BHT-21
BHT-17	MA	2	0.5	TBC	X		355347	6598705	Transmission Line West	BHT-22
BHT-18	HQ3	6	6.0	TBC			355402	6599519	Transmission Line West	BHT-23
BHT-19	HQ3	6	6.0	TBC			355461	6599599	Transmission Line West	BHT-24

PRELIMINARY STRATIGRAPHY

Name	Type	Target Depth (m)	Borehole Test Depth (m)	Stratigraphy	Further Observation
BH4-01	MA/DPSH	1.5	1.5	1	Old reserve area (near old minging shaft, dam, and some deleterious material were noted at the surface)
BH4-02	MA/DPSH	1.5	1.5	1	
BH4-03	MA/DPSH	1.5	1.5	1	
BH4-04	MA/DPSH	1.5	1.0	1	
BH4-05	MA/DPSH	1.5	2.0	1	
BH4-06	MA/DPSH	1.5	2.0	1	
BH4-07	MA/DPSH	3	1.2	1	
BH4-08	MA/DPSH	3	3.0	1	
BH4-09	MA/DPSH	3	3.0	1	
BH4-10	MA/DPSH	3	1.0	1	
BH4-11	MA/DPSH	3	3.0	1	
BH4-12	MA/DPSH	3	3.0	1	
BH4-13	MA/DPSH	3	2.4	1	
BH4-14	MA/DPSH	3	2.0	1	Near exsiting powerline corridor
BH4-15	MA/DPSH	3	1.6	1	Near exsiting powerline corridor
BHS-01	HQ3	6	6.0	1/2	Near old mining shaft, and some deleterious material noted at surface
BHS-02	HQ3	6	6.0	1/2	natural bush
BHS-03	MA/DPSH	4.5	0.3	1/2	Near exsiting powerline corridor
BHS-04	MA/DPSH	4.5	0.4	1/2	Near exsiting powerline corridor
BHT-01	MA (change to HQ3)	2	2.0	1/2	Road reserve (on Black Street)
BHT-02	MA	2	1.0	1	Road reserve (on Black Street)
BHT-03	MA	2	2.0	1	Near exsiting powerline corridor
BHT-04	MA	2	2.0	1	Near exsiting powerline corridor
BHT-05	HQ3	6	6.0	1/3	Near exsiting railway corridor
BHT-06	HQ3	6	6.0	1/3	end of access track, near exsiting railway corridor
BHT-07	MA	2	2.0	1	natural bush
BHT-08	HQ3	5	6.0	1/3	end of access track, near laydown area
BHT-09	HQ3	5	6.0	1/3	Near exsiting powerline corridor
BHT-10	MA	2	3.0	1	natural bush
BHT-11	MA	2	3.0	1	natural bush
BHT-12	MA	2	0.5	1	deleterious material noted at surfac
BHT-13	MA	2	0.4	1	on access track
BHT-14	MA	2	2.0	1	natural bush (abandoned cars, and possible ACM material >100 m away from test location)
BHT-15	HQ3	5	8.0	1/2	near old mining shaft
BHT-16	HQ3	5	8.0	1/2	Old pavement material noted at surface
BHT-17	MA	2	0.5	1	Near exsiting poweline corridor
BHT-18	HQ3	6	6.0	1/2	Near exsiting railway corridor
BHT-19	HQ3	6	6.0	1/2	deleterious material noted at surface (old pavement etc.) near exsiting railway corridor

Unit

- | | |
|----------------------|---|
| 1 Alluvial/Colluvial | Clayey SAND/Clayey Silt typically red brown, low to medium plasticity |
| 2 Duricrust | Typically very low to low strength |
| 3 GRANITE? | Typically extremely to highly weathered |

APPENDIX B:
ANALYTICAL RESULTS

APPENDIX B



Sample Location	Sample ID	Sample Date	Investigation	From	To	Sample Depth (mbgl)	Texture	Colour
BHT-13	BHT-13-SUR	23/05/2025	Transmission Route	0	0.4	0.1	Clayey SAND/Clayey SILT/Clayey GRAVEL/Silty CLAY/Sandy CLAY/Gravelly CLAY	Red Brown
BHT-13	BHT-13-SUB	23/05/2025	Transmission Route	0	0.4	0.5	Clayey SAND/Clayey SILT/Clayey GRAVEL/Silty CLAY/Sandy CLAY/Gravelly CLAY	Red Brown
BHT-14	BHT-14-SUB	23/05/2025	Transmission Route	0	2	0.5	Clayey SAND/Clayey SILT/Clayey GRAVEL/Silty CLAY/Sandy CLAY/Gravelly CLAY	Red Brown
BHT-14	BHT-14-SUR	23/05/2025	Transmission Route	0	2	0.1	Clayey SAND/Clayey SILT/Clayey GRAVEL/Silty CLAY/Sandy CLAY/Gravelly CLAY	Red Brown
BHT-15	BHT-15-SUR	23/05/2025	Transmission Route	0	8	0.1	Clayey SAND/Clayey SILT/Clayey GRAVEL/Silty CLAY/Sandy CLAY/Gravelly CLAY, low strength duricrust	Red Brown
BHT-15	BHT-15-SUB	23/05/2025	Transmission Route	0	8	0.5	Clayey SAND/Clayey SILT/Clayey GRAVEL/Silty CLAY/Sandy CLAY/Gravelly CLAY, low strength duricrust	Red Brown
BHT-16	BHT-16-SUR	23/05/2025	Transmission Route	0	8	0.1	Clayey SAND/Clayey SILT/Clayey GRAVEL/Silty CLAY/Sandy CLAY/Gravelly CLAY, low strength duricrust	Red Brown
BHT-16	BHT-16-SUB	23/05/2025	Transmission Route	0	8	0.5	Clayey SAND/Clayey SILT/Clayey GRAVEL/Silty CLAY/Sandy CLAY/Gravelly CLAY, low strength duricrust	Red Brown
BHT-17	BHT-17-SUB	23/05/2025	Transmission Route	0	0.5	0.5	Clayey SAND/Clayey SILT/Clayey GRAVEL/Silty CLAY/Sandy CLAY/Gravelly CLAY	Red Brown
BHT-17	BHT-17-SUR	23/05/2025	Transmission Route	0	0.5	0.1	Clayey SAND/Clayey SILT/Clayey GRAVEL/Silty CLAY/Sandy CLAY/Gravelly CLAY	Red Brown
Composite and Duplicates								
BH4-02-SUR	Composite 1	16/06/2025	Power Plant	NA	NA	NA	NA	NA
BH4-03-SUR		16/06/2025	Power Plant	NA	NA	NA	NA	NA
BH4-04-SUR		16/06/2025	Power Plant	NA	NA	NA	NA	NA
BH4-04-SUR Dup		16/06/2025	Power Plant	NA	NA	NA	NA	NA
BH4-07-SUR		16/06/2025	Power Plant	NA	NA	NA	NA	NA
BH4-08-SUR		16/06/2025	Power Plant	NA	NA	NA	NA	NA
BH4-04	BH4-04-SUR Duplicate	23/05/2025	Power Plant	NA	NA	NA	NA	NA
BH4-10	BH4-07-SUR Duplicate	24/05/2025	Power Plant	NA	NA	NA	NA	NA
BHS-04	BHS-03-SUR Duplicate	23/05/2025	Substation	NA	NA	NA	NA	NA
BHT-13	BHT-13-SUR Duplicate	23/05/2025	Transmission Route	NA	NA	NA	NA	NA
BHT-13	BHT-13-SUB Duplicate	23/05/2025	Transmission Route	NA	NA	NA	NA	NA
BHT-17	BHT-17-SUB Duplicate	23/05/2025	Transmission Route	NA	NA	NA	NA	NA
BHT-17	BHT-17-SUR Duplicate	23/05/2025	Transmission Route	NA	NA	NA	NA	NA
BHT-12-SUR	Composite 2	16/06/2025	Transmission Route	NA	NA	NA	NA	NA
BHT-13-SUR		16/06/2025	Transmission Route	NA	NA	NA	NA	NA
BHT-14-SUR		16/06/2025	Transmission Route	NA	NA	NA	NA	NA
BHT-15-SUR		16/06/2025	Transmission Route	NA	NA	NA	NA	NA

Sample Location	Sample ID	Texture	Investigation	Sample Depth (mbgl)	Polycyclic Aromatic Hydrocarbons (PAHs)			Polycyclic Aromatic Hydrocarbons (PAHs)			
					Fluoranthene	Pyrene	Benzo(a) anthracene	Chrysene	Benzo(b,j,k) fluoranthene	Benzo(a)pyrene	Indeno(1,2,3-c,d) pyrene
Units					mg/kg	mg/kg	mg/kg	mg/kg	mg/kg	mg/kg	mg/kg
TEF					0.01	0.01	0.1	0.1	0.2	0.05	0.1
BH4-01	BH4-01-SUR	Clayey SAND/Clayey SILT/Clayey GRAVEL/Silty CLAY/Sandy CLAY/Gravelly CLAY	Power Plant	0.1	<0.1	<0.1	<0.1	<0.1	<0.2	<0.05	<0.1
BH4-05	BH4-05-SUR	Clayey SAND/Clayey SILT/Clayey GRAVEL/Silty CLAY/Sandy CLAY/Gravelly CLAY	Power Plant	0.1	<0.1	<0.1	<0.1	<0.1	<0.2	<0.05	<0.1
BH4-06	BH4-06-SUR	Clayey SAND/Clayey SILT/Clayey GRAVEL/Silty CLAY/Sandy CLAY/Gravelly CLAY	Power Plant	0.1	<0.1	<0.1	<0.1	<0.1	<0.2	<0.05	<0.1
BH4-07	BH4-07-SUR	Clayey SAND/Clayey SILT/Clayey GRAVEL/Silty CLAY/Sandy CLAY/Gravelly CLAY	Power Plant	0.1	<0.1	<0.1	<0.1	<0.1	<0.2	<0.05	<0.1
BH4-11	BH4-11-SUR	Clayey SAND/Clayey SILT/Clayey GRAVEL/Silty CLAY/Sandy CLAY/Gravelly CLAY	Power Plant	0.1	<0.1	<0.1	<0.1	<0.1	<0.2	<0.05	<0.1
BHS-01	BHS-01-SUR	Clayey SAND/Clayey SILT/Clayey GRAVEL/Silty CLAY/Sandy CLAY/Gravelly CLAY, Duricrust	Substation	0.1	<0.1	<0.1	<0.1	<0.1	<0.2	<0.05	<0.1
BHS-02	BHS-02-SUR	Clayey SAND/Clayey SILT/Clayey GRAVEL/Silty CLAY/Sandy CLAY/Gravelly CLAY, Duricrust	Substation	0.1	<0.1	<0.1	<0.1	<0.1	<0.2	<0.05	<0.1
BHS-03	BHS-03-SUR	Clayey SAND/Clayey SILT/Clayey GRAVEL/Silty CLAY/Sandy CLAY/Gravelly CLAY, Duricrust	Substation	0.1	<0.1	<0.1	<0.1	<0.1	<0.2	<0.05	<0.1
Ecological Investigation Limit - Commercial / Industrial D (NEPM 2013)					N/G	N/G	N/G	N/G	N/G	N/G	N/G
Ecological Screening Limit - Commercial / Industrial D (NEPM 2013)					N/G	N/G	N/G	N/G	N/G	0.7	N/G
Health Investigation Limit - Commercial / Industrial D (NEPM 2013)**					N/G	N/G	N/G	N/G	N/G	0.7	N/G

** HIL is based on the 8 carcinogenic PAH's and their TEF's. The TEQ is calculated by multiplying the concentration of each carcinogenic PAH in the sample by its TEF and summing these products.

N/G : No applicable guideline value.

Sample Location	Sample ID	Texture	Investigation	Sample Depth (mbgl)	Dibenzo(a,h) anthracene	Benzo(g,h,i) perylene	Total
				Units	mg/kg	mg/kg	mg/kg
				TEF	0.1	0.1	0.05
BH4-01	BH4-01-SUR	Clayey SAND/Clayey SILT/Clayey GRAVEL/Silty CLAY/Sandy CLAY/Gravelly CLAY	Power Plant	0.1	<0.1	<0.1	<0.05
BH4-05	BH4-05-SUR	Clayey SAND/Clayey SILT/Clayey GRAVEL/Silty CLAY/Sandy CLAY/Gravelly CLAY	Power Plant	0.1	<0.1	<0.1	<0.05
BH4-06	BH4-06-SUR	Clayey SAND/Clayey SILT/Clayey GRAVEL/Silty CLAY/Sandy CLAY/Gravelly CLAY	Power Plant	0.1	<0.1	<0.1	<0.05
BH4-07	BH4-07-SUR	Clayey SAND/Clayey SILT/Clayey GRAVEL/Silty CLAY/Sandy CLAY/Gravelly CLAY	Power Plant	0.1	<0.1	<0.1	<0.05
BH4-11	BH4-11-SUR	Clayey SAND/Clayey SILT/Clayey GRAVEL/Silty CLAY/Sandy CLAY/Gravelly CLAY	Power Plant	0.1	<0.1	<0.1	<0.05
BHS-01	BHS-01-SUR	Clayey SAND/Clayey SILT/Clayey GRAVEL/Silty CLAY/Sandy CLAY/Gravelly CLAY, Duricrust	Substation	0.1	<0.1	<0.1	<0.05
BHS-02	BHS-02-SUR	Clayey SAND/Clayey SILT/Clayey GRAVEL/Silty CLAY/Sandy CLAY/Gravelly CLAY, Duricrust	Substation	0.1	<0.1	<0.1	<0.05
BHS-03	BHS-03-SUR	Clayey SAND/Clayey SILT/Clayey GRAVEL/Silty CLAY/Sandy CLAY/Gravelly CLAY, Duricrust	Substation	0.1	<0.1	<0.1	<0.05
Ecological Investigation Limit - Commercial / Industrial D (NEPM 2013)					N/G	N/G	N/G
Ecological Screening Limit - Commercial / Industrial D (NEPM 2013)					N/G	N/G	N/G
Health Investigation Limit - Commercial / Industrial D (NEPM 2013)**					N/G	N/G	4000

** HIL is based on the 8 carcinogenic PAH's and their TEF's. The TEQ is calculated by multiplying the concentration of each carcinogenic PAH in the sample by its TEF and summing these products.
N/G : No applicable guideline value.

Sample Location	Sample ID	Texture	Investigation	Sample Depth (mbgl)	BTEX					
					Benzene mg/kg	Toluene mg/kg	Ethylbenzene mg/kg	meta+para Xylene mg/kg	ortho-Xylene mg/kg	Total Xylene mg/kg
BH4-01	BH4-01-SUR	Clayey SAND/Clayey SILT/Clayey GRAVEL/Silty CLAY/Sandy CLAY/Gravelly CLAY	Power Plant	0.1	<0.20	<0.50	<1.0	<2.0	<1.0	<1.0
BH4-05	BH4-05-SUR	Clayey SAND/Clayey SILT/Clayey GRAVEL/Silty CLAY/Sandy CLAY/Gravelly CLAY	Power Plant	0.1	<0.20	<0.50	<1.0	<2.0	<1.0	<1.0
BH4-06	BH4-06-SUR	Clayey SAND/Clayey SILT/Clayey GRAVEL/Silty CLAY/Sandy CLAY/Gravelly CLAY	Power Plant	0.1	<0.20	<0.50	<1.0	<2.0	<1.0	<1.0
BH4-07	BH4-07-SUR	Clayey SAND/Clayey SILT/Clayey GRAVEL/Silty CLAY/Sandy CLAY/Gravelly CLAY	Power Plant	0.1	<0.20	<0.50	<1.0	<2.0	<1.0	<1.0
BH4-11	BH4-11-SUR	Clayey SAND/Clayey SILT/Clayey GRAVEL/Silty CLAY/Sandy CLAY/Gravelly CLAY	Power Plant	0.1	<0.20	<0.50	<1.0	<2.0	<1.0	<1.0
BHS-01	BHS-01-SUR	Clayey SAND/Clayey SILT/Clayey GRAVEL/Silty CLAY/Sandy CLAY/Gravelly CLAY, Duricrust	Substation	0.1	<0.20	<0.50	<1.0	<2.0	<1.0	<1.0
BHS-02	BHS-02-SUR	Clayey SAND/Clayey SILT/Clayey GRAVEL/Silty CLAY/Sandy CLAY/Gravelly CLAY, Duricrust	Substation	0.1	<0.20	<0.50	<1.0	<2.0	<1.0	<1.0
BHS-03	BHS-03-SUR	Clayey SAND/Clayey SILT/Clayey GRAVEL/Silty CLAY/Sandy CLAY/Gravelly CLAY, Duricrust	Substation	0.1	<0.20	<0.50	<1.0	<2.0	<1.0	<1.0
Ecological Screening Limit - Commercial / Industrial (NEPM 2013)*					95	135	185	95	95	95
Health Screening Limit - Commercial / Industrial (NEPM 2013)				0m - 1m	3	NL	NL	230	230	230
				1m - 2m	3	NL	NL	NL	NL	NL
				2m - 4m	3	NL	NL	NL	NL	NL
Health Screening Limit - Intrusive Maintenance Worker (Shallow Trench) CRC CARE				0m - 2m	77	NL	NL	NL	NL	NL
Soil Saturation (Csat) (NEPM 2013)					360	560	64	300	300	300

* Ecological Screening Limit. Soil Texture: Fine Sand

**Health Screening Limit for vapour intrusion. Soil Texture: Sand

N/G : No applicable guideline value.

Sample Location	Sample ID	Texture	Investigation	Sample Depth (mbgl)	Semi-volatile TRH			
					F1 ^ (C6-C10) mg/kg	F2 ^ (>C10-C16) mg/kg	F3 (>C16-C34) mg/kg	F4 (>C34-C40) mg/kg
				Units				
BH4-01	BH4-01-SUR	Clayey SAND/Clayey SILT/Clayey GRAVEL/Silty CLAY/Sandy CLAY/Gravelly CLAY	Power Plant	0.1	<25	<50	<100	<100
BH4-05	BH4-05-SUR	Clayey SAND/Clayey SILT/Clayey GRAVEL/Silty CLAY/Sandy CLAY/Gravelly CLAY	Power Plant	0.1	<25	<50	<100	<100
BH4-06	BH4-06-SUR	Clayey SAND/Clayey SILT/Clayey GRAVEL/Silty CLAY/Sandy CLAY/Gravelly CLAY	Power Plant	0.1	<25	<50	<100	<100
BH4-07	BH4-07-SUR	Clayey SAND/Clayey SILT/Clayey GRAVEL/Silty CLAY/Sandy CLAY/Gravelly CLAY	Power Plant	0.1	<25	<50	<100	<100
BH4-11	BH4-11-SUR	Clayey SAND/Clayey SILT/Clayey GRAVEL/Silty CLAY/Sandy CLAY/Gravelly CLAY	Power Plant	0.1	<25	<50	<100	<100
BHS-01	BHS-01-SUR	Clayey SAND/Clayey SILT/Clayey GRAVEL/Silty CLAY/Sandy CLAY/Gravelly CLAY, Duricrust	Substation	0.1	<25	<50	<100	<100
BHS-02	BHS-02-SUR	Clayey SAND/Clayey SILT/Clayey GRAVEL/Silty CLAY/Sandy CLAY/Gravelly CLAY, Duricrust	Substation	0.1	<25	<50	<100	<100
BHS-03	BHS-03-SUR	Clayey SAND/Clayey SILT/Clayey GRAVEL/Silty CLAY/Sandy CLAY/Gravelly CLAY, Duricrust	Substation	0.1	<25	<50	<100	<100
Ecological Screening Limit - Commercial / Industrial (NEPM 2013)*					215	170	2,500	6,600
Health Screening Limit - Commercial / Industrial (NEPM 2013)**				0m - 1m	260	NL	NL	NL
				1m - 2m	370	NL	NL	NL
				2m - 4m	630	NL	NL	NL
Soil Saturation Concentration (Csat) (NEPM 2013)					950	560	NL	NL
Management Limits - Commercial and Industrial (NEPM 2013)*					800	1,000	5,000	10,000
* Ecological Screening Limit and Management Limits - Soil Texture: Fine Sand								
** Health Screening Limit for vapour intrusion. Soil Texture: Sand								
^ F1 is obtained by subtracting BTEX from C6-C10 fraction. F2 is obtained by subtracting naphthalene from the >C10-C16 fraction								
N/L: No applicable Limit								

Sample Location	Sample ID	Texture	Investigation	Sample Depth (mbgl)	Organochlorine Pesticides (OCP)									Polychlorinated Biphenyls (PCBs)
					Aldrin and dieldrin	Chlordane	Endosulfan	Endrin	Heptachlor	Hexachlorobenzene (HCB)	Total DDT+DDD+DDE	Methoxychlor	Mirex	
				Units	0.1	0.1	0.1	0.1	0.1	0.1	0.1	0.1	0.1	0.1
BH4-01	BH4-01-SUR	Clayey SAND/Clayey SILT/Clayey GRAVEL/Silty CLAY/Sandy CLAY/Gravelly CLAY	Power Plant	0.1	<0.1	<0.1	<0.1	<0.1	<0.1	<0.1	<0.1	<0.1	<0.1	<0.1
BH4-05	BH4-05-SUR	Clayey SAND/Clayey SILT/Clayey GRAVEL/Silty CLAY/Sandy CLAY/Gravelly CLAY	Power Plant	0.1	<0.1	<0.1	<0.1	<0.1	<0.1	<0.1	<0.1	<0.1	<0.1	<0.1
BH4-06	BH4-06-SUR	Clayey SAND/Clayey SILT/Clayey GRAVEL/Silty CLAY/Sandy CLAY/Gravelly CLAY	Power Plant	0.1	<0.1	<0.1	<0.1	<0.1	<0.1	<0.1	<0.1	<0.1	<0.1	<0.1
BH4-07	BH4-07-SUR	Clayey SAND/Clayey SILT/Clayey GRAVEL/Silty CLAY/Sandy CLAY/Gravelly CLAY	Power Plant	0.1	<0.1	<0.1	<0.1	<0.1	<0.1	<0.1	<0.1	<0.1	<0.1	<0.1
BH4-11	BH4-11-SUR	Clayey SAND/Clayey SILT/Clayey GRAVEL/Silty CLAY/Sandy CLAY/Gravelly CLAY	Power Plant	0.1	<0.1	<0.1	<0.1	<0.1	<0.1	<0.1	<0.1	<0.1	<0.1	<0.1
BHS-01	BHS-01-SUR	Clayey SAND/Clayey SILT/Clayey GRAVEL/Silty CLAY/Sandy CLAY/Gravelly CLAY, Duricrust	Substation	0.1	<0.1	<0.1	<0.1	<0.1	<0.1	<0.1	<0.1	<0.1	<0.1	<0.1
BHS-02	BHS-02-SUR	Clayey SAND/Clayey SILT/Clayey GRAVEL/Silty CLAY/Sandy CLAY/Gravelly CLAY, Duricrust	Substation	0.1	<0.1	<0.1	<0.1	<0.1	<0.1	<0.1	<0.1	<0.1	<0.1	<0.1
BHS-03	BHS-03-SUR	Clayey SAND/Clayey SILT/Clayey GRAVEL/Silty CLAY/Sandy CLAY/Gravelly CLAY, Duricrust	Substation	0.1	<0.1	<0.1	<0.1	<0.1	<0.1	<0.1	<0.1	<0.1	<0.1	<0.1
Ecological Investigation Levels - Commercial / Industrial (NEPM 2013)					N/G	N/G	N/G	N/G	N/G	N/G	640*	N/G	N/G	N/G
Health Investigation Levels - Commercial / Industrial (NEPM 2013)					45	530	2000	100	50	80	3600	2500	100	7

* Ecological Investigation Levels for fresh DDT

N/G : No applicable guideline value.

ACL Determination:

Sample ID	Date	Calcium	Potassium	Magnesium	Sodium	Cation Exchange	Organic Carbon	Total Organic Carbon
		meq/100g	meq/100g	meq/100g	meq/100g	meq/100g	mg/kg	mg/kg
Composit 1		14	1.9	2.4	0.23	18	12000	17000

Sample ID	Date	Total Organic Matter	pH	Moisture	Particle Density	2 µm Clay	Iron	Iron
		mg/kg	pH units	%	g/cm ³	% passing	mg/kg	%
Composit 1		29000	7.4	2.8	2.8	4	80000	NA

EIL Determination

Sample ID	Date	Arsenic	Cadmium	Cr III	Copper
		mg/kg	mg/kg	mg/kg	mg/kg
Background		20	0.2	350	65
Average Conc.		20	0.2	350	65
Added Contaminant Limit - Commercial / Industrial D (NEPM)		160		840	370
Ecological Investigation Limit - Commercial / Industrial D (NEPM)		180	3	1190	435

Sample ID	Date	Lead	Mercury	Nickel	Zinc
		mg/kg	mg/kg	mg/kg	mg/kg
Background		16.2	0.286	79.2	68
Average Conc.		16.2	0.286	79.2	68
Added Contaminant Limit - Commercial / Industrial D (NEPM)		1800		500	1100
Ecological Investigation Limit - Commercial / Industrial D (NEPM)		1816	1	579	1168

Individual ACLs were determined based on Total Carbon (Walkley Black), pH, Cation Exchange Capacity, and % clay of the background samples

N/L = No Limit

Sample Location	Sample ID	Investigation	Sample Depth (mbgl)	Metals							
				Arsenic mg/kg	Cadmium mg/kg	Chromium mg/kg	Copper mg/kg	Lead mg/kg	Mercury mg/kg	Nickel mg/kg	Zinc mg/kg
BH4-01	BH4-01-SUB	Power Station	0.5	12	<0.40	300	53	12	0.29	62	52
BH4-01	BH4-01-SUR	Power Station	0.1	13	<0.40	310	39	16	0.3	64	69
BH4-02	BH4-02-SUB	Power Station	0.5	11	<0.40	310	56	8.7	<0.10	75	41
BH4-02	BH4-02-SUR	Power Station	0.1	20	<0.40	390	57	15	0.2	84	62
BH4-03	BH4-03-SUB	Power Station	0.5	12	<0.40	330	59	9.2	<0.10	75	41
BH4-03	BH4-03-SUR	Power Station	0.1	18	<0.40	360	37	21	0.16	71	89
BH4-04	BH4-04-SUB	Power Station	0.5	10	<0.40	290	72	12	0.15	73	67
BH4-04	BH4-04-SUR	Power Station	0.1	17	<0.40	310	53	24	0.17	76	130
BH4-05	BH4-05-SUB	Power Station	0.5	24	<0.40	230	66	8.8	<0.10	49	45
BH4-05	BH4-05-SUR	Power Station	0.1	35	<0.40	120	89	16	0.15	68	160
BH4-06	BH4-06-SUB	Power Station	0.5	12	<0.40	320	49	11	0.18	67	43
BH4-06	BH4-06-SUR	Power Station	0.1	29	<0.40	470	66	10	0.13	130	65
BH4-07	BH4-07-SUB	Power Station	0.5	15	<0.40	290	51	8.8	<0.10	53	31
BH4-07	BH4-07-SUR	Power Station	0.1	21	<0.40	350	56	14	0.18	100	120
BH4-08	BH4-08-SUB	Power Station	0.5	13	<0.40	240	71	12	0.16	53	53
BH4-08	BH4-08-SUR	Power Station	0.1	15	<0.40	270	44	12	0.16	51	55
BH4-09	BH4-09-SUB	Power Station	0.5	11	<0.40	240	67	10	<0.10	53	48
BH4-09	BH4-09-SUR	Power Station	0.1	11	<0.40	280	58	11	<0.10	62	63
BH4-10	BH4-10-SUB	Power Station	0.5	12	<0.40	340	48	18	<0.10	69	160
BH4-10	BH4-10-SUR	Power Station	0.1	11	<0.40	350	34	12	<0.10	57	120
BH4-11	BH4-11-SUB	Power Station	0.5	10	<0.40	310	65	10	<0.10	74	48
BH4-11	BH4-11-SUR	Power Station	0.1	9.4	<0.40	340	51	11	<0.10	72	44
BH4-12	BH4-12-SUB	Power Station	0.5	13	<0.40	220	73	6.2	<0.10	30	30
BH4-12	BH4-12-SUR	Power Station	0.1	15	<0.40	250	38	24	0.17	57	210
BH4-13	BH4-13-SUB	Power Station	0.5	13	<0.40	360	58	9.9	<0.10	65	44
BH4-13	BH4-13-SUR	Power Station	0.1	14	<0.40	320	58	14	0.12	76	60
BH4-14	BH4-14-SUB	Power Station	0.5	27	<0.40	250	54	9.3	<0.10	50	38
BH4-14	BH4-14-SUR	Power Station	0.1	20	<0.40	420	49	17	<0.10	98	68
BH4-15	BH4-15-SUB	Power Station	0.5	13	<0.40	340	56	13	<0.10	73	51
BH4-15	BH4-15-SUR	Power Station	0.1	17	<0.40	350	48	16	0.17	88	120
BHS-01	BHS-01-SUB	Substation	0.5	17	<0.40	180	65	12	0.27	49	46
BHS-01	BHS-01-SUR	Substation	0.1	20	<0.40	140	72	9.6	0.16	42	34
BHS-02	BHS-02-SUB	Substation	0.5	37	<0.40	340	45	15	0.4	45	40
BHS-02	BHS-02-SUR	Substation	0.1	61	<0.40	220	56	20	0.24	51	68
BHS-03	BHS-03-SUB	Substation	0.5	27	<0.40	240	44	12	0.3	59	37
BHS-03	BHS-03-SUR	Substation	0.1	44	<0.40	230	51	20	0.59	78	69
BHS-04	BHS-04-SUB	Substation	0.5	8.1	<0.40	300	31	11	<0.10	39	18
BHS-04	BHS-04-SUR	Substation	0.1	<4.0	<0.40	77	6.6	2.8	<0.10	8.8	4.8
BHT-01	BHT-01-SUB	Transmission Route	0.5	7.8	<0.40	220	43	9	0.13	46	28
BHT-01	BHT-01-SUR	Transmission Route	0.1	11	<0.40	230	44	14	0.12	52	35
BHT-02	BHT-02-SUB	Transmission Route	0.1	22	<0.40	160	34	11	<0.10	42	25
BHT-02	BHT-02-SUR	Transmission Route	0.5	25	<0.40	96	65	6.8	<0.10	29	25
BHT-03	BHT-03-SUB	Transmission Route	0.5	12	<0.40	270	50	10	<0.10	68	38
BHT-03	BHT-03-SUR	Transmission Route	0.1	27	<0.40	280	52	17	0.55	89	76
BHT-04	BHT-04-SUR	Transmission Route	0.1	19	<0.40	260	32	14	0.13	70	52
BHT-04	BHT-04-SUB	Transmission Route	0.5	12	<0.40	250	35	11	<0.10	48	28
BHT-05	BHT-05-SUB	Transmission Route	0.5	14	<0.40	260	37	12	<0.10	50	30
BHT-05	BHT-05-SUR	Transmission Route	0.1	15	<0.40	440	44	14	<0.10	110	46
BHT-06	BHT-06-SUB	Transmission Route	0.5	7.8	<0.40	210	30	9	<0.10	40	23
BHT-06	BHT-06-SUR	Transmission Route	0.1	9.3	<0.40	270	34	13	<0.10	54	33
BHT-07	BHT-07-SUR	Transmission Route	0.1	9.7	<0.40	340	26	14	0.11	46	34
BHT-07	BHT-07-SUB	Transmission Route	0.5	8.9	<0.40	220	32	13	<0.10	43	23
BHT-09	BHT-09-SUR	Transmission Route	0.1	9.1	<0.40	390	43	12	<0.10	96	43
BHT-09	BHT-09-SUB	Transmission Route	0.5	11	<0.40	380	44	14	0.15	89	51
BHT-10	BHT-10-SUR	Transmission Route	0.1	11	<0.40	410	29	16	0.13	88	42
BHT-10	BHT-10-SUB	Transmission Route	0.5	7.6	<0.40	340	41	13	<0.10	76	26
BHT-11	BHT-11-SUB	Transmission Route	0.5	11	<0.40	180	48	8	<0.10	48	28
BHT-11	BHT-11-SUR	Transmission Route	0.1	14	<0.40	270	30	12	<0.10	54	37
BHT-12	BHT-12-SUB	Transmission Route	0.5	10	<0.40	170	67	8.5	<0.10	35	41
BHT-12	BHT-12-SUR	Transmission Route	0.1	11	<0.40	180	49	8	0.13	36	38
BHT-13	BHT-13-SUR	Transmission Route	0.1	6.5	<0.40	310	28	10	<0.10	49	45
BHT-13	BHT-13-SUB	Transmission Route	0.5	6.8	<0.40	300	34	9.3	<0.10	50	39
BHT-14	BHT-14-SUB	Transmission Route	0.5	6.1	<0.40	520	120	47	<0.10	160	65
BHT-14	BHT-14-SUR	Transmission Route	0.1	6.2	<0.40	640	69	22	0.13	150	32
BHT-15	BHT-15-SUR	Transmission Route	0.1	13	<0.40	410	50	16	0.16	66	73
BHT-15	BHT-15-SUB	Transmission Route	0.5	19	<0.40	240	56	29	0.38	48	150
BHT-16	BHT-16-SUR	Transmission Route	0.1	22	<0.40	300	70	25	<0.10	140	65
BHT-16	BHT-16-SUB	Transmission Route	0.5	17	<0.40	350	59	21	<0.10	91	38
BHT-17	BHT-17-SUB	Transmission Route	0.5	10	<0.40	270	34	13	<0.10	52	19
BHT-17	BHT-17-SUR	Transmission Route	0.1	14	<0.40	370	31	31	<0.10	45	23
Background				20	<0.40	350	65	16.2	0.29	79.2	68
Ecological Investigation Limit - Commercial / Industrial D (NEPM 2013)				180	3	1190	435	1816	1	579	1168
Health Investigation Limit - Commercial / Industrial D (NEPM 2013)				3,000	900	N/L	240,000	1,500	730	6,000	400,000