

OPTIMISED MARDIE PROJECT

PROPOSAL CONTENT DOCUMENT

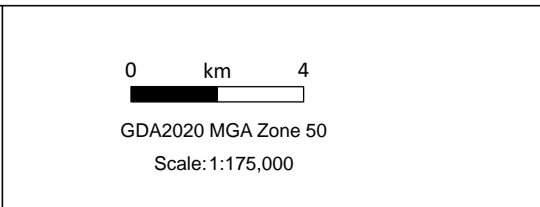
Table 1: General Proposal Content Description

Proposal Title	Optimised Mardie Project
Proponent Name	Mardie Minerals Pty Ltd
Short Description	The proposal is to develop a solar salt and sulphate of potash production plant and associated export facility at Mardie, approximately 80 km south-west of Karratha. The proposal includes two seawater intakes, brine discharge, evaporation and crystalliser ponds, processing plant, causeway, trestle jetty with associated dredge channel, offshore disposal of dredge material, and supporting infrastructure.

Table 2: Proposal Content Elements

Proposal Element	Location	Proposal extent, capacity or range
Physical Elements		
Development Envelope	Figure 1 Figure 4	Terrestrial development envelope not to exceed 19,763 ha. Marine development envelope not to exceed 53 ha. Dredge development envelope not to exceed 307.5 ha. Combined area of concentrator ponds and crystalliser ponds not to exceed 11,368 ha.
Disturbance footprint	Figure 1	Terrestrial disturbance not to exceed 13,476 ha within 19,763 ha development envelope.
Direct disturbance of native vegetation	Figure 1	Clearing of no more than 3,014 ha vegetation in 'good' to 'excellent' condition native vegetation. Clearing of no more than 863 ha landward samphire. Clearing of no more than 330 ha of coastal samphire.
Impacts on PEC and Mangrove Habitat	Figure 2	No more than 145 ha direct and 20 ha indirect impacts to Horseflat PEC. No more than 13 ha of direct disturbance to mangrove habitat outside of the RRDMMMA. No more than 4 ha of clearing within the RRDMMMA inclusive of any clearing conducted by the proponent prior to the issue of this statement and clearing conducted by the proponent under any other approval mechanism subject to the requirements of conditions B3-4 and C1-1.
Direct disturbance to Algal mats	Figure 4	No more than 880 ha of direct impact to algal mats.
Dredging	Figure 3	No more than 800,000 cubic metres, directly disturbing no more than 65 ha within the 307.5 ha dredge development envelope.
Offshore Dredge Spoil Disposal	Figure 6	Capital dredging of no more than 355,000 cubic metres, and maintenance dredging as required, directly disturbing no more than 30.3 ha at Dredge Material Placement Area (DMPA) 4.
Foraging habitat for the Pilbara leaf-nosed bat (<i>Rhinonicteris aurantia</i>)	Figure 1	Clearing no more than 3,254 ha.
Foraging habitat for the Northern coastal free-	Figure 1	Clearing no more than 1,186 ha.

Proposal Element	Location	Proposal extent, capacity or range
tailed bat (<i>Ozimops cobourgianus</i>)		
Habitat for the Pilbara Olive Python (<i>Liasis olivaceus barroni</i>)	Figure 1	Clearing no more than 6 ha.
Foraging habitat for the Northern Quoll (<i>Dasyurus hallucatus</i>)	Figure 1	Clearing no more than 80 ha.
Zone of High Impact (e.g. marine)	Figure 3 Figure 6	Marine zone of high impact to be limited to 121 ha at the dredge area and 355 ha at the offshore dredge spoil disposal area.
Level of ecological protection areas (marine environmental quality)	Figure 4	Moderate ecological protection area (MEPA) not to exceed 53.9 ha. Low ecological protection area (LEPA) not to exceed 20.2 ha.
Distance between crystallisers and Mardie pool	Figure 1	Minimum distance of 1000 metres to be maintained between crystalliser ponds and Mardie pool.
Drainage corridors	Figure 1	Minimum of two drainage corridors of a minimum of 200 metres wide to be established and aligned with existing natural drainage lines.
Operational Elements		
Groundwater abstraction	Figure 7	Groundwater abstraction not to exceed 0.7 GL per annum.
Marine discharge rate	Figure 4	Brine discharge not to exceed 5.5 GL per annum with a specific gravity of no more than 1.25 via diffuser.
Seawater intake	-	Seawater intakes to be fitted with four-sided screens designed to ensure a rate not exceeding 0.15 metres per second through the screen. Primary seawater intake is to not exceed 180 GL per annum.
Proposal Elements with greenhouse gas emissions		
Construction Elements		
Scope 1	N/A	57,847 tCO ₂ -e per year
Scope 2	N/A	None
Scope 3	N/A	Unlikely to be significant
Operation Elements		
Scope 1	N/A	64,798 tCO ₂ -e per year
Scope 2	N/A	None
Scope 3	N/A	Unlikely to be significant
Rehabilitation and Closure		
Proposal infrastructure to be removed within 3 years of closure Construction disturbance that is not required for operations is to be rehabilitated		
Timing Elements		
Mine life	-	Up to 63 years from issue of this statement.
Seawater intake	-	Abstract seawater from primary and secondary intake only when tides are at or above Mean Sea Level.



Date: 29/04/2025
Drawn: BCIGIS
Requested: GIS
Page Size: A3

OPTIMISED MARDIE PROJECT

Proposal location and development envelopes

380000

390000

400000

Legend

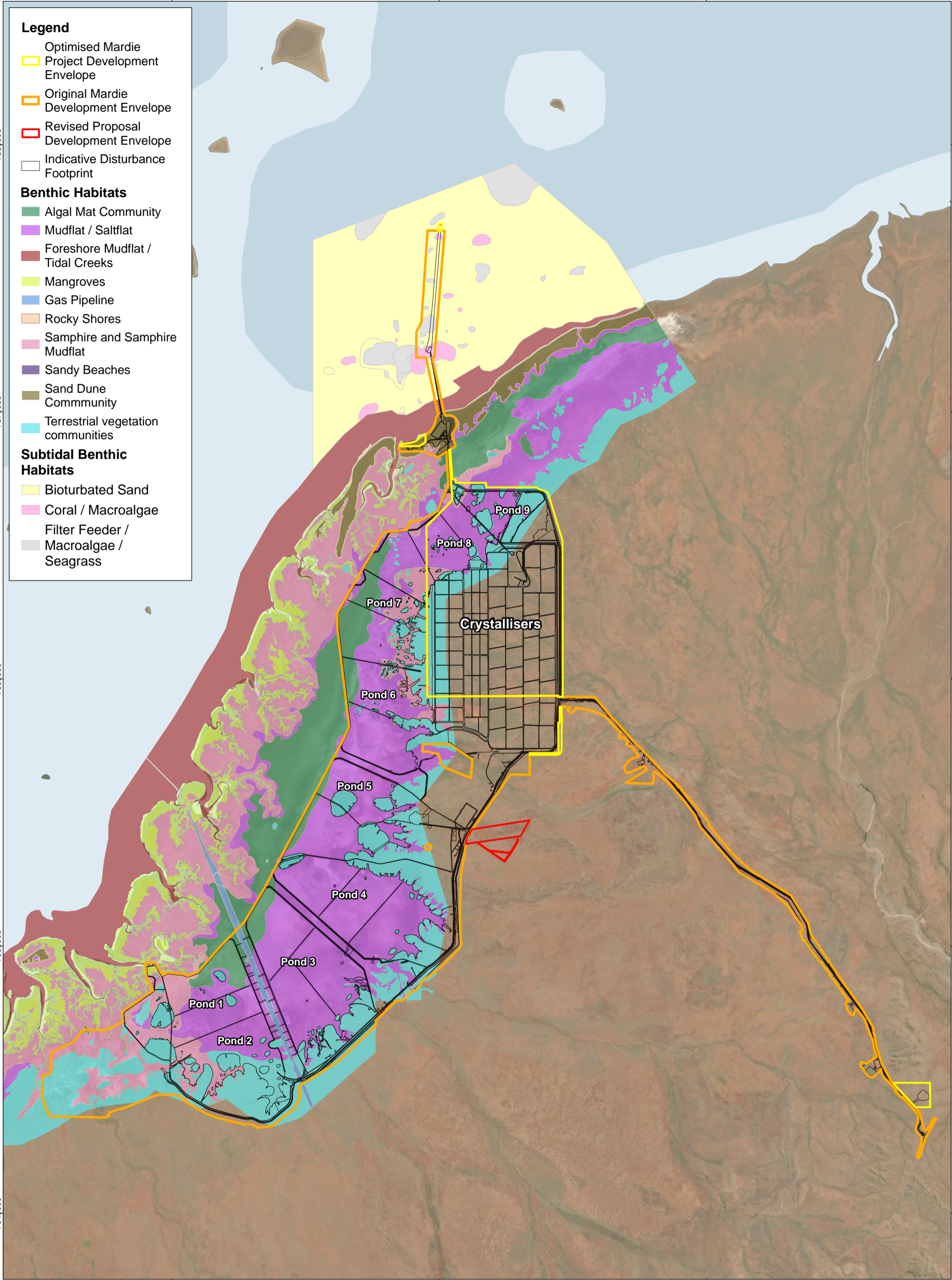
- Optimised Mardie
- Project Development Envelope
- Original Mardie Development Envelope
- Revised Proposal Development Envelope
- Indicative Disturbance Footprint

Benthic Habitats

- Algal Mat Community
- Mudflat / Saltflat
- Foreshore Mudflat / Tidal Creeks
- Mangroves
- Gas Pipeline
- Rocky Shores
- Samphire and Samphire Mudflat
- Sandy Beaches
- Sand Dune Community
- Terrestrial vegetation communities

Subtidal Benthic Habitats

- Bioturbated Sand
- Coral / Macroalgae
- Filter Feeder / Macroalgae / Seagrass



S:\GISMAP\Mardie\2025\MAR_0000-0099\MAR_0072_00_2025_BENTHIC_COMMUNITIES_AND_HABITATS.aprx



0 km 5

GDA2020 MGA Zone 50
Scale: 1:130,000

Date: 29/04/2025

Drawn: BCIGIS

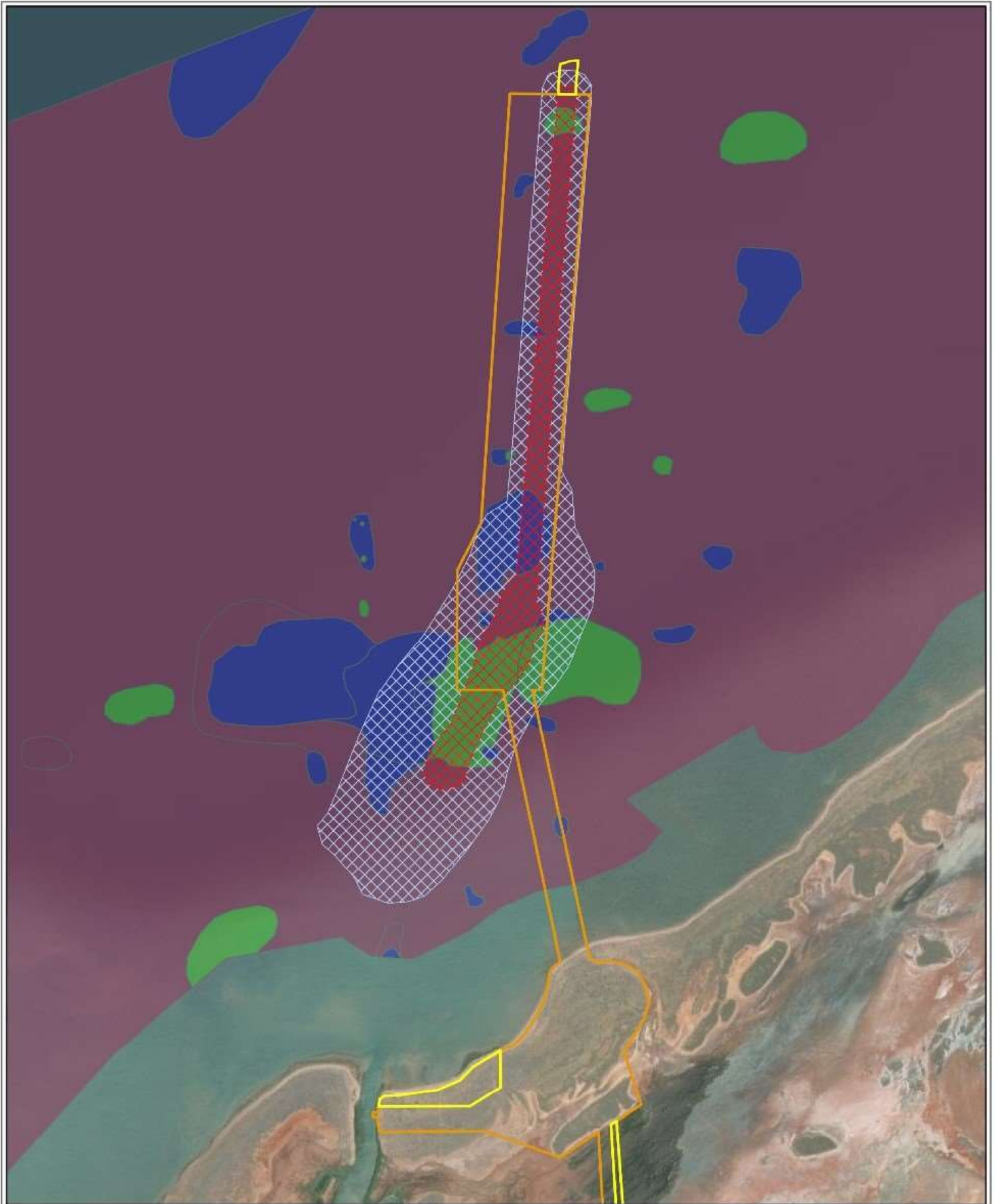
Requested: BCI

Page Size: A3





OPTIMISED MARDIE PROJECT
Benthic communities and habitats within the
Proposal area

Figure:




2



Legend

-  Mardie Project (MS1175)
-  Optimised Mardie Project
-  ZOI Proposed High Influence - Worse Case
-  ZOI Proposed Medium Influence - Worse Case

Subtidal Benthic Habitats

-  Bioturbated Sand
-  Coral / Macroalgae
-  Filter Feeder / Macroalgae / Seagrass

SOURCE DATA
 Proponent: Mardie Minerals Pty Ltd
 Basemap: ESRI World Imagery

DWER GIS Section
 Date: 13/04/2023, Map Version: 1
 Application No: DWERT566183

Disclaimer:
 This map is intended as a generalised overview of information only.
 The information contained in this map is to be considered indicative only and is
 not to be used for any purpose other than that intended. The Department of Water and Environmental Regulation is not liable
 for any incident or consequential damages resulting from use of this material.
 Copyright Department of Water and Environmental Regulation 2023
 All Rights Reserved. All marks and information displayed are subject to copyright.
 For the reproduction or publication of any part of this map, the Copyright Act 1968 written permission must be sought from the Agency.



0 0.25 0.5 1 1.5

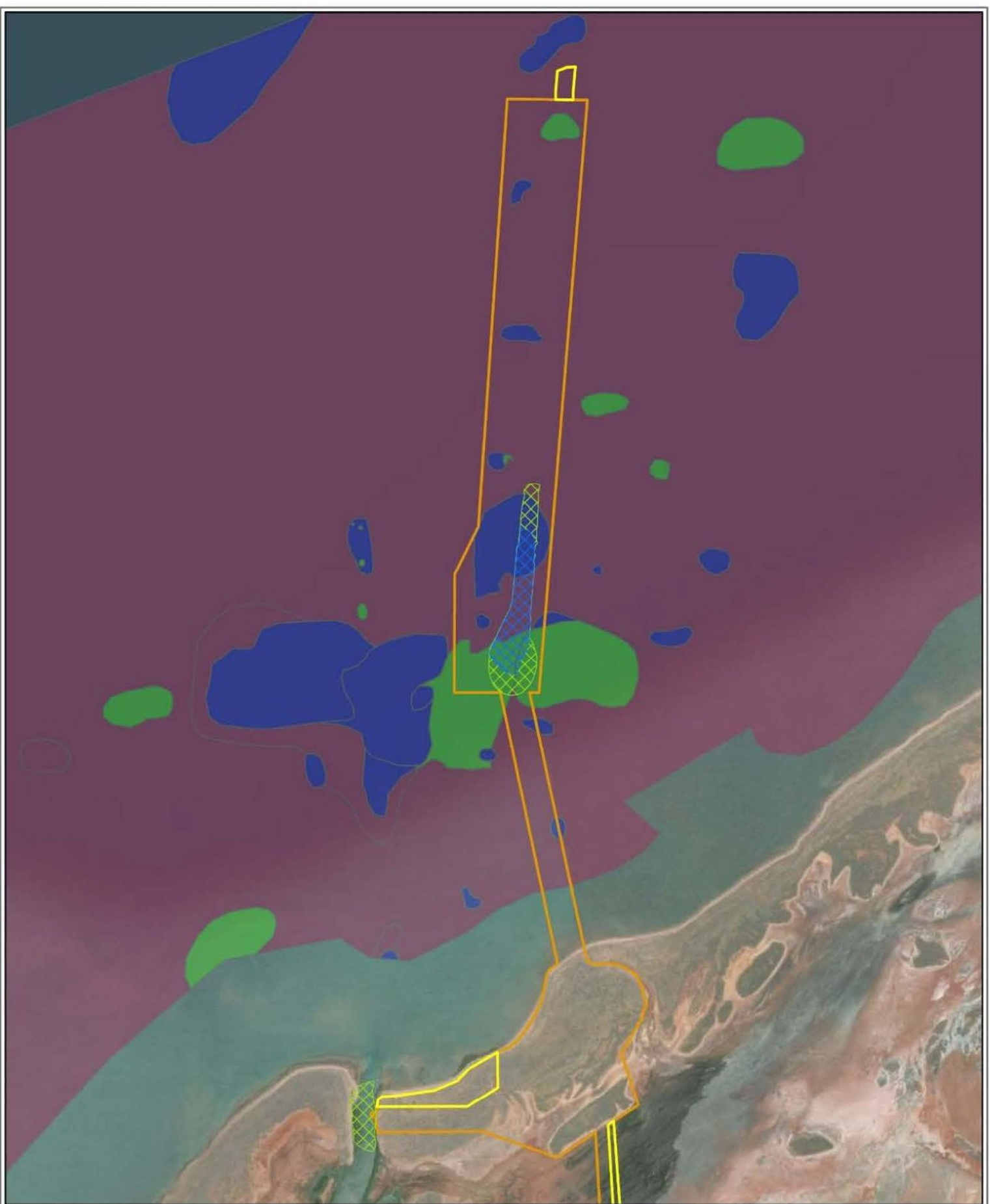


Kilometres

Spatial Reference: GDA2020 MGA Zone 50
 Scale: 1:40,000 at A4



Figure 3: Dredge envelope with zones of High and Moderate Influence



Legend

- Mardie Project (MS1175)
- Optimised Mardie Project

Levels of Ecological Protection

- Mod LEP - Dry Season
- Low LEP - Dry Season


Subtidal Benthic Habitats

- Bioturbated Sand
- Coral / Macroalgae
- Filter Feeder / Macroalgae / Seagrass


SOURCE DATA
 Proponent: Mardie Minerals Pty Ltd
 Basemap: ESRI World Imagery

DWER GIS Section
 Date: 24/05/2023, Map Version: 2
 Application No: DWERDT566183


Disclaimer
 This map is intended as a generalised interpretation of environmental issues. The information contained on this map is to be considered indicative only and in no event shall the Department of Water and Environmental Regulation be liable for any accident or consequential damages resulting from use of the material.
 Copyright Department of Water and Environmental Regulation, 2023.
 All rights reserved. All marks and information displayed are subject to copyright. For the reproduction or publication beyond that permitted by the Commonwealth Copyright Act 1968 written permission must be sought from the Agency.



GOVERNMENT OF WESTERN AUSTRALIA



N



0 0.25 0.5 1 1.5
Kilometres

Spatial Reference: GDA2020 MGA Zone 50
 Scale: 1:40,000 at A4









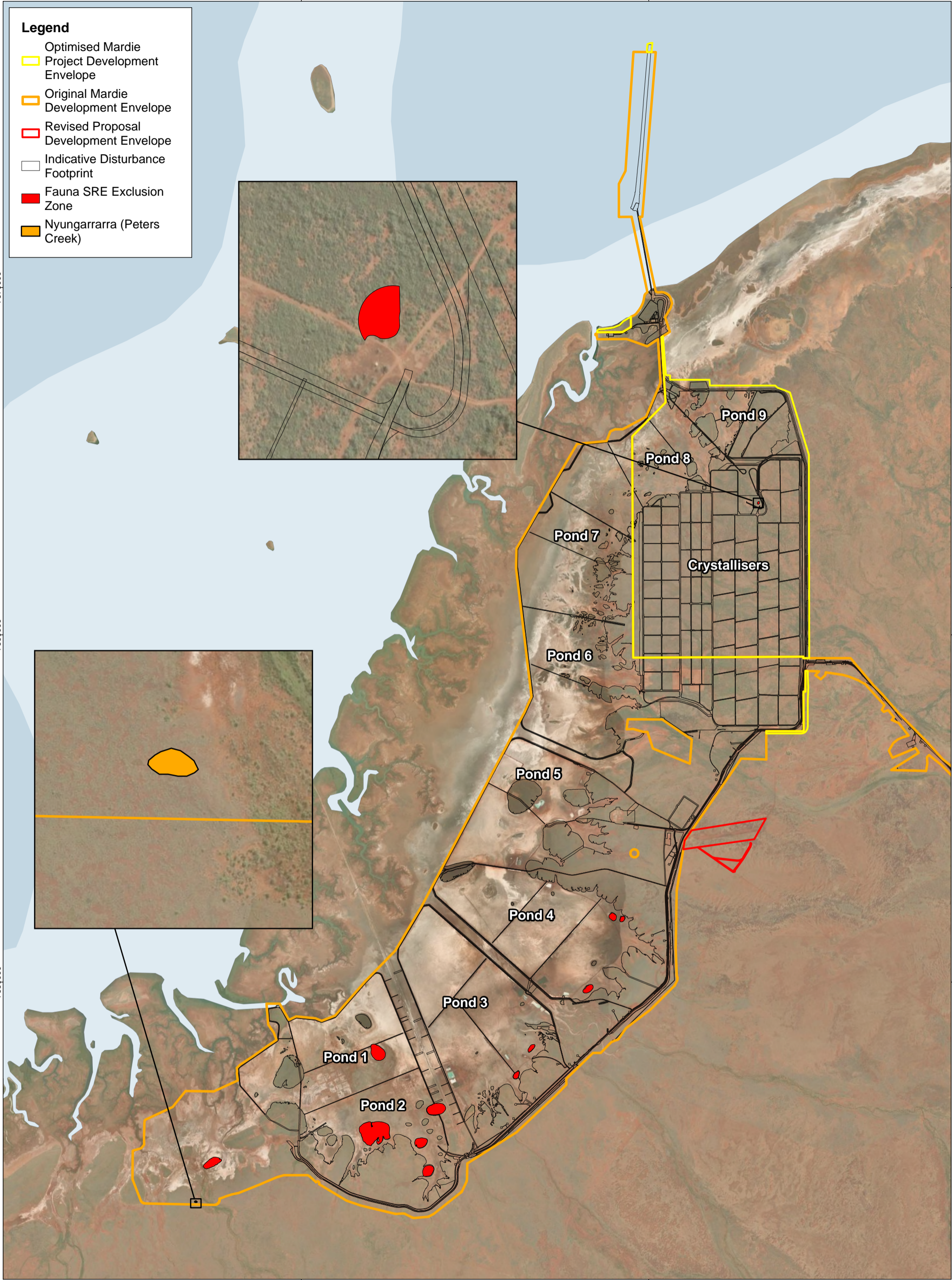
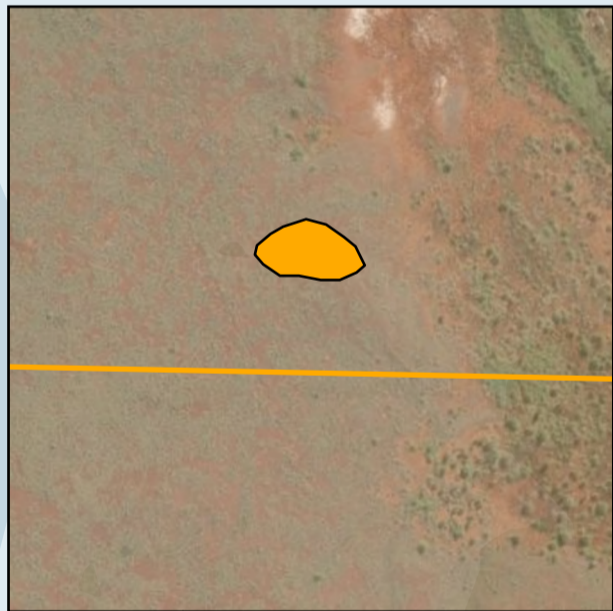
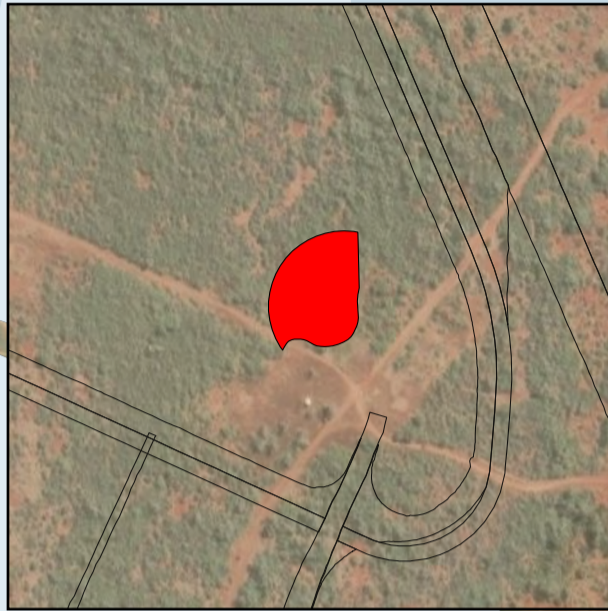
Figure 4: Level of ecological protection areas around diffuser location

380000

390000

Legend

-  Optimised Mardie Project Development Envelope
-  Original Mardie Development Envelope
-  Revised Proposal Development Envelope
-  Indicative Disturbance Footprint
-  Fauna SRE Exclusion Zone
-  Nyungarrarra (Peters Creek)



7670000

7660000

7650000

7670000

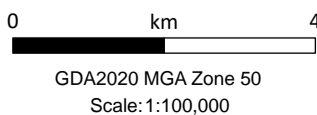
7660000

7650000

380000

390000

S:\GISMAP\Mardie\2025\MAR_0000-0099\MAR_0073_00_2025_SRE_EXCLUSION_ZONES.aprx



Date: 29/04/2025
 Drawn: BCIGIS
 Requested: BCI
 Page Size: A3

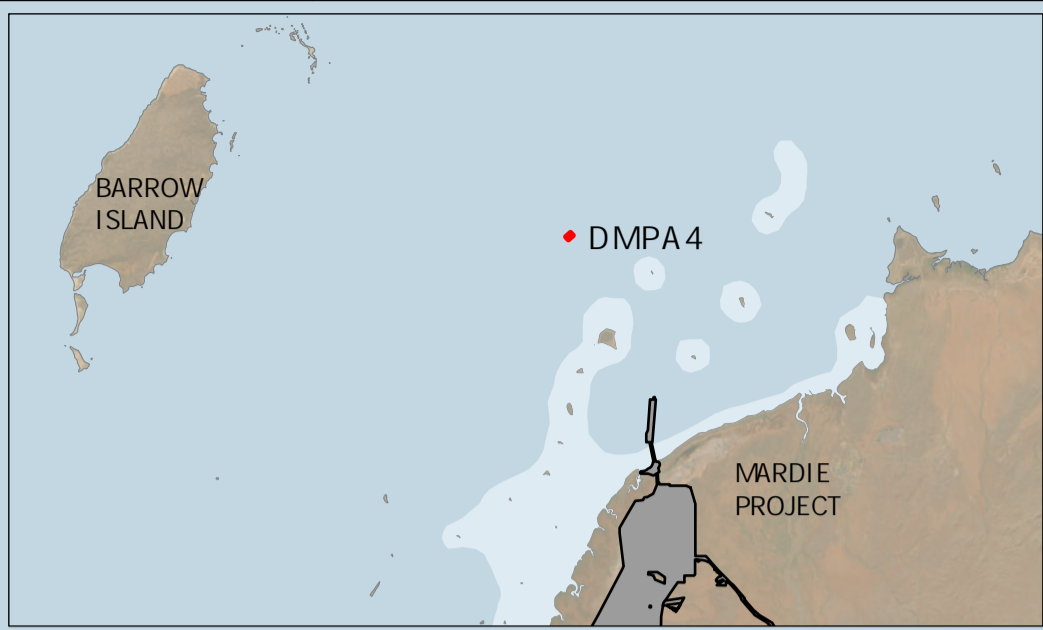
OPTIMISED MARDIE PROJECT
 Short Range Endemic fauna exclusion zones
 and Peters Creek exclusion zone

Figure:






5

377500

380000



Legend

-  Project Area
-  Disturbance Footprint Direct - Proposed Dredge Spoil Area (DMPA4)
-  Disturbance Footprint - Indirect (ZOHI P80)
-  Disturbance Footprint - Indirect (ZOMI P80)
-  Indicative Vessel Route

7687500

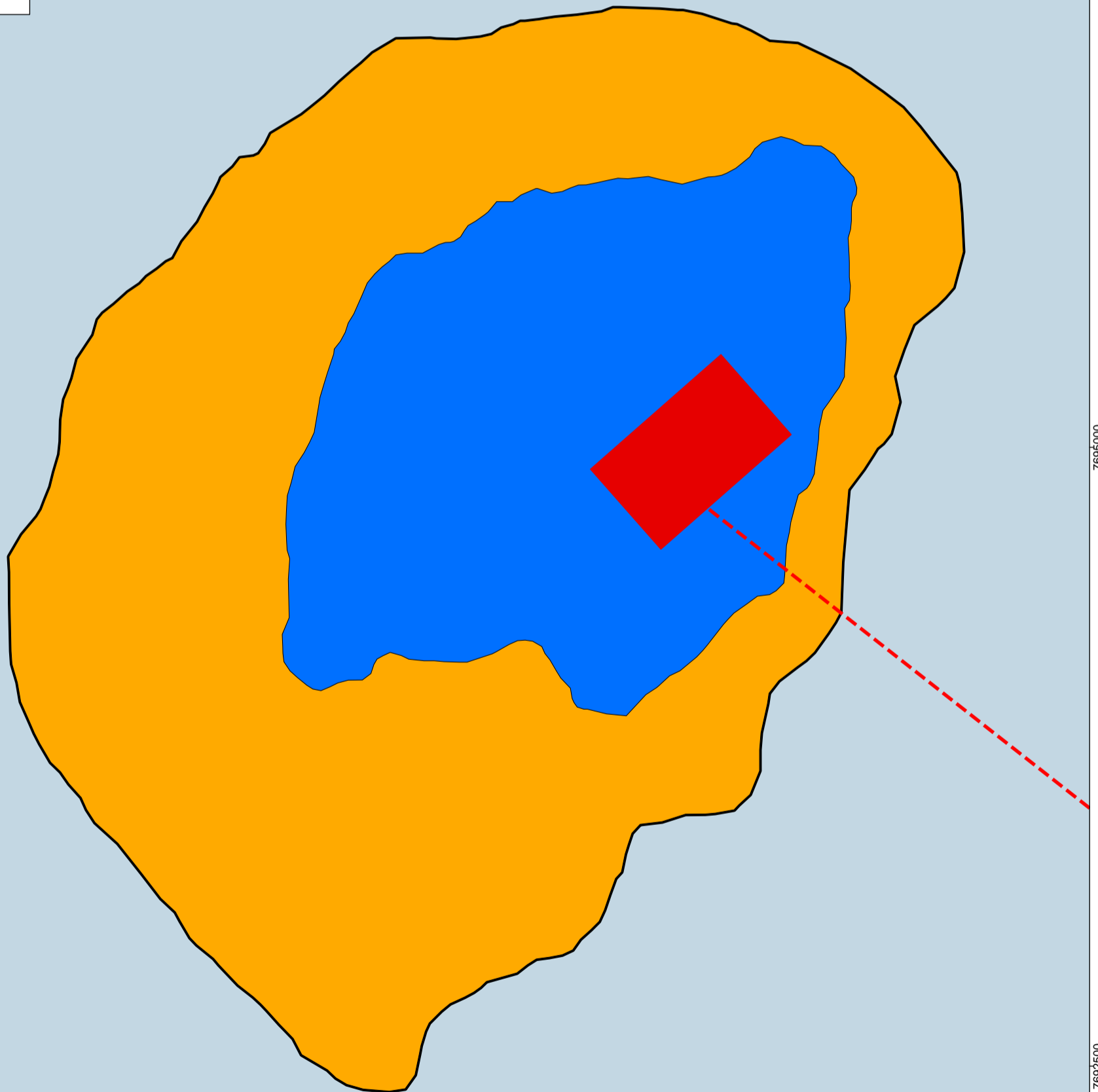
7687500

7695000

7695000

7692500

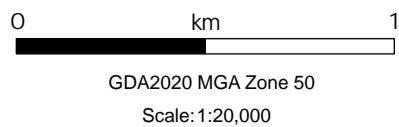
7692500



S:\GIS\MAP\Mardie\2024\MAR_0100-0199\MAR_0189_00_2024_DMPA4_Spoilground.aprx

377500

380000



Date: 29/04/2025

Drawn: GIS

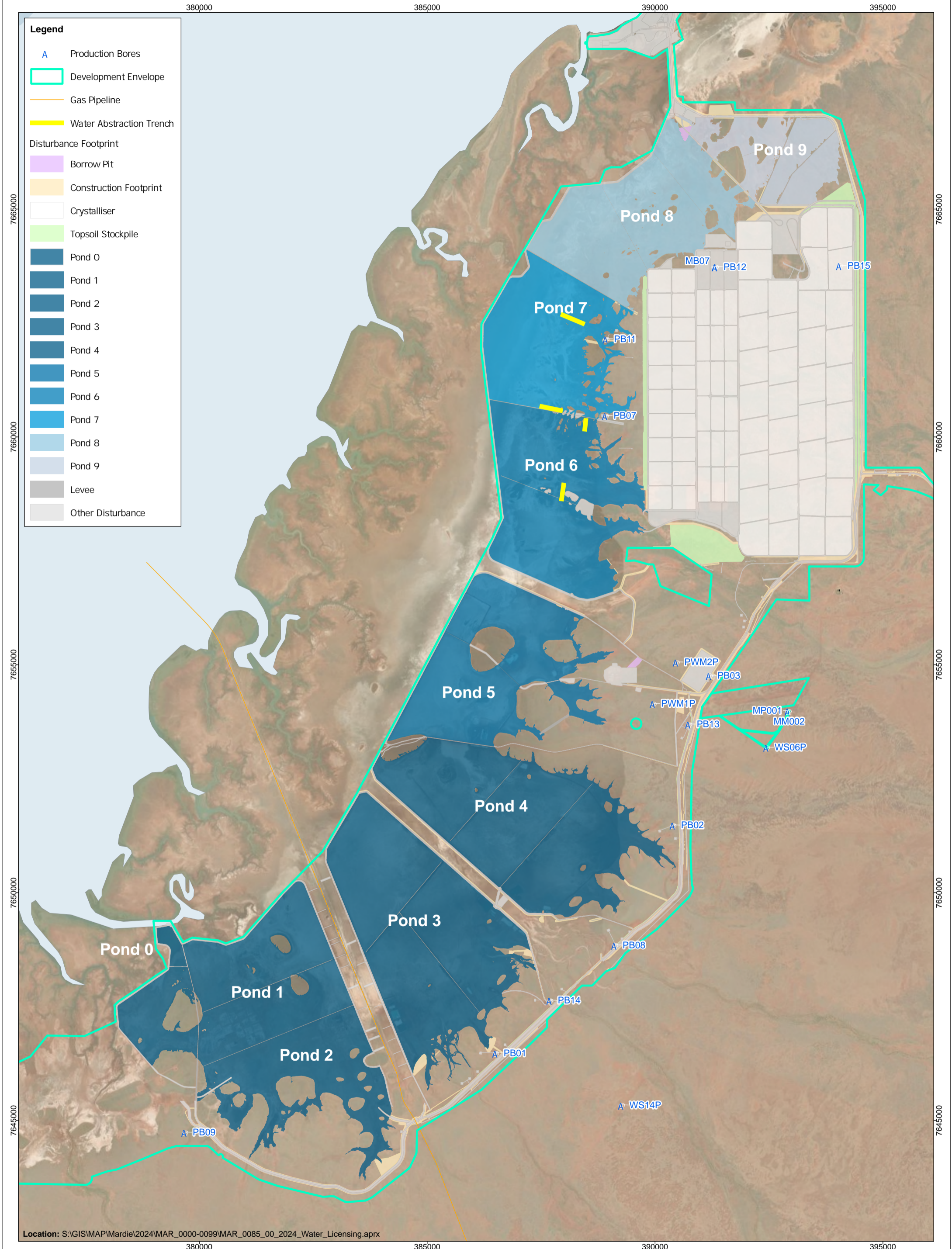
Requested: BCI

Page Size: A3

OPTIMISED MARDIE PROJECT
DMPA 4 with associated zones of High
and Moderate impact

Figure:

6



Location: S:\GIS\MAP\Mardie\2024\MAR_0000-0099\MAR_0085_00_2024_Water_Licensing.aprx



0 km 2
 GDA2020 MGA Zone 50
 Scale: 1:72,500

Date: 29/04/2025
 Drawn: GIS
 Requested: BCI
 Page Size: A3

OPTIMISED MARDIE PROJECT
 Production bores and water abstraction
 trenches

Figure:
7