



SERS
Site Environmental and
Remediation Services

FIGURE 7 – ENVIRONMENTAL FACTORS



FIGURE 7: Environmental Factors



SERS
Site Environmental and Remediation Services

Head Office: 281 Newcastle Street Northbridge WA 6003
Postal: PO Box 377 Northbridge Perth WA 6865
T: +61 8 9220 2000 F: +61 8 9220 2010
E: admin@sers.net.au W: www.sers.net.au

Job No: 004-08
Client: Brikmakers
Address: 1728 Great Northern Highway, Bullsbrook, WA 6084.
© This plan must not be reproduced without the permission of SERS
File: N:\A SERS\GIS\Projects\ MXD\

Scale: 1:15,000
Original size: A3
Imagery from: 20/10/2017
Source: Nearmaps

Date drawn: 23/11/2017
Revision: 0
Drawn by: A.C
Checked by: R.M



Legend


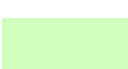



-  Bush Forever Sites
-  Threatened Ecological Communities
-  Priority Sites
-  Site Boundary

FIGURE 8 – WETLANDS



FIGURE 8 : Geomorphic Wetlands

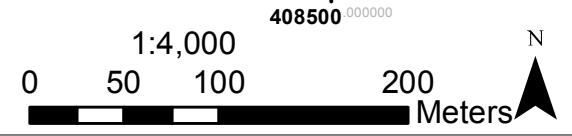
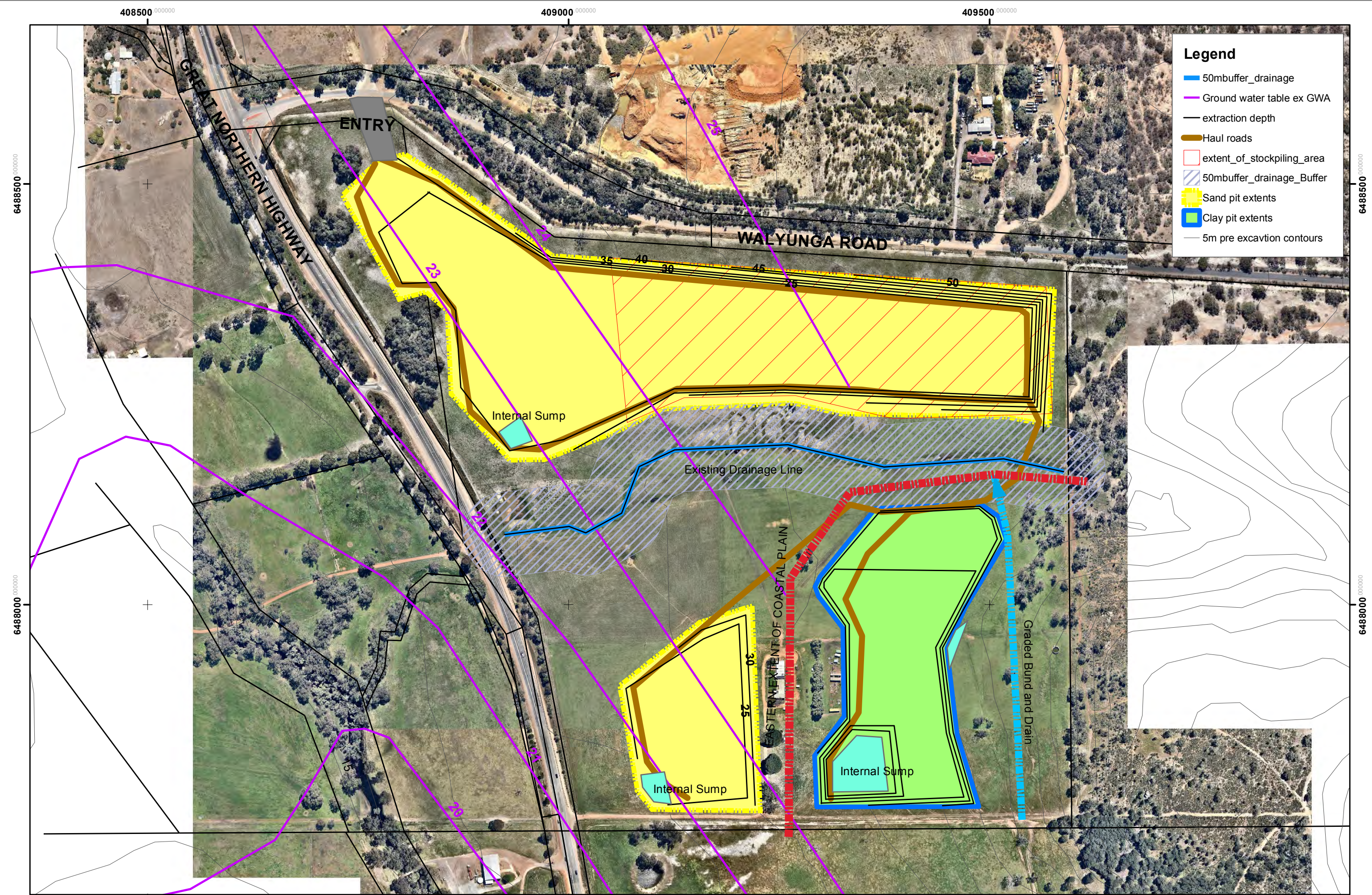


Legend		
	Site Boundary	 Palusplain Resource Enhancement
	Sumpland Multiple Use	 Palusplain Conservation
		 Palusplain Multiple Use



SERS
Site Environmental and
Remediation Services

FIGURE 9 – DEPTH OF EXCAVATION WITH WATER MANAGEMENT



Darling Downs- Bullsbrook- Depth of Excavation and Water Mangement





SERS
Site Environmental and
Remediation Services

FIGURE 10 – GROUNDWATER FLOWS AND EXCAVATION DEPTHS

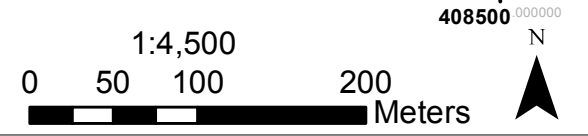
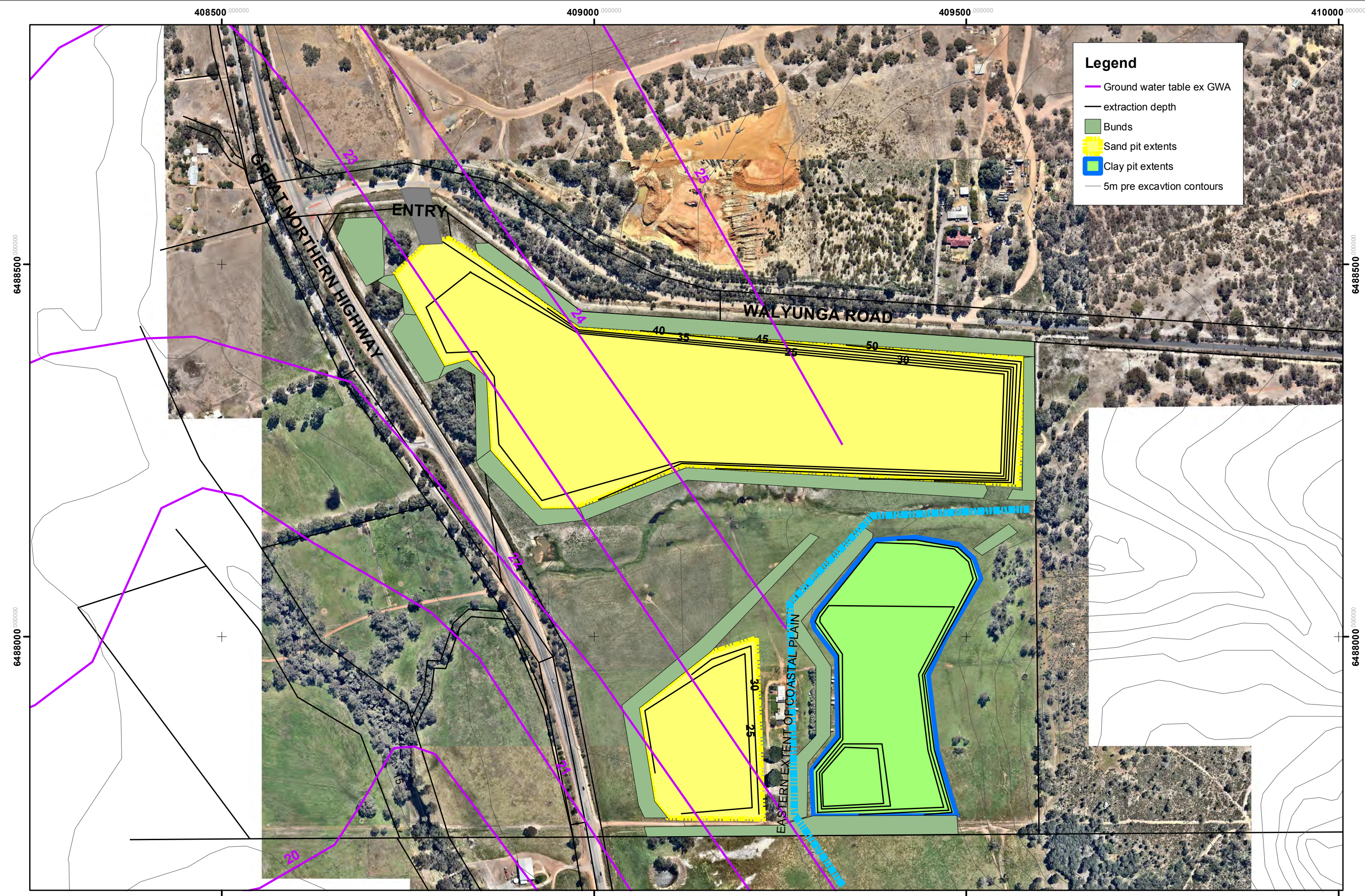


FIGURE 10 - Groundwater Flows and Depth of Excavation

FIGURE 11 – TOPOGRAPHY

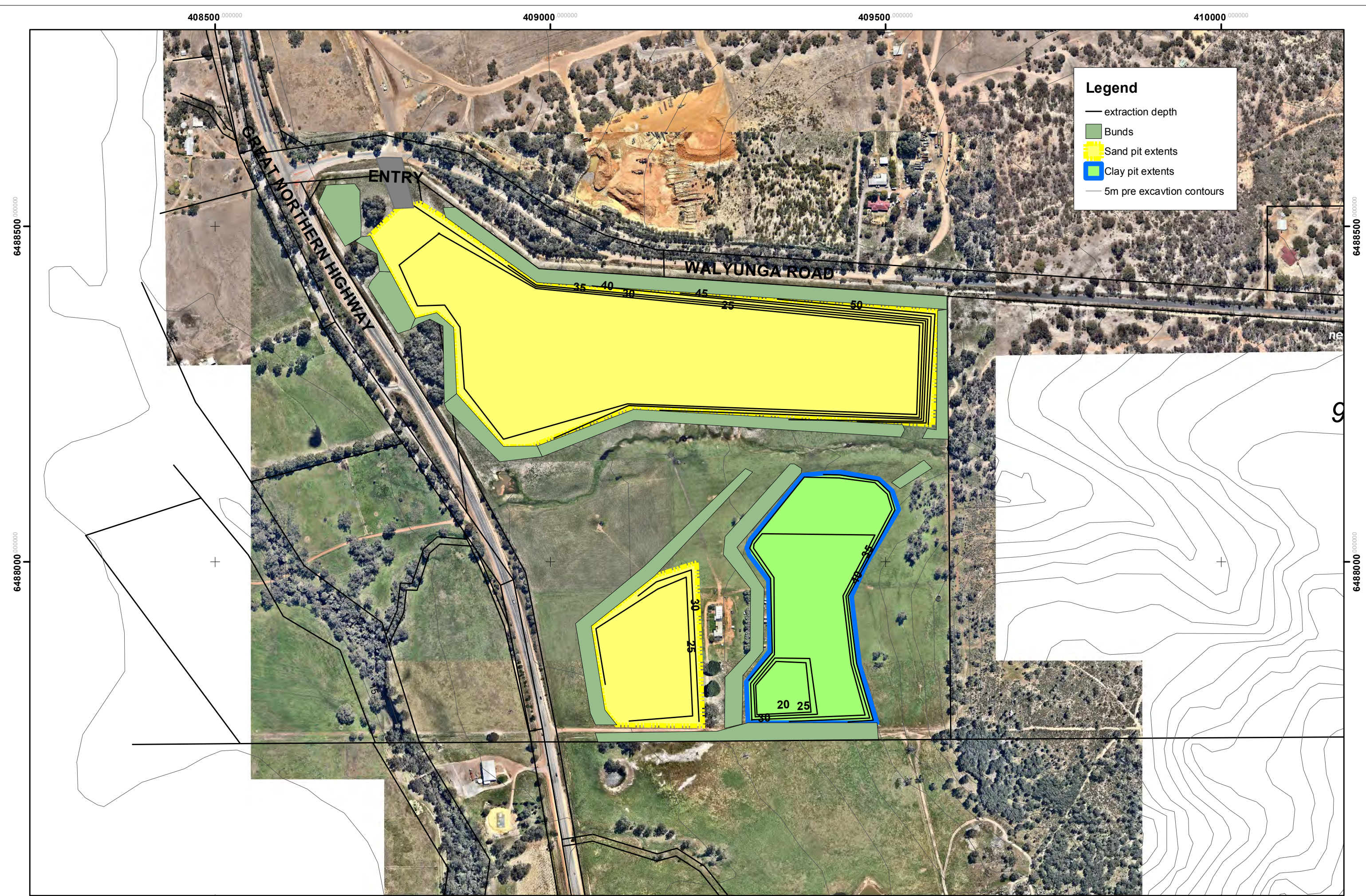


FIGURE 11 - Site Topography and Depth of Excavation

**FIGURE 12 – FINAL CONTOURS AND FINAL
STAGES TO BE REHABILITATED**

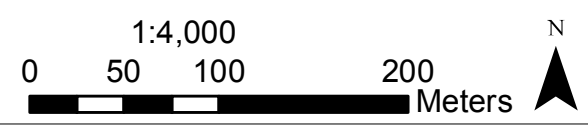
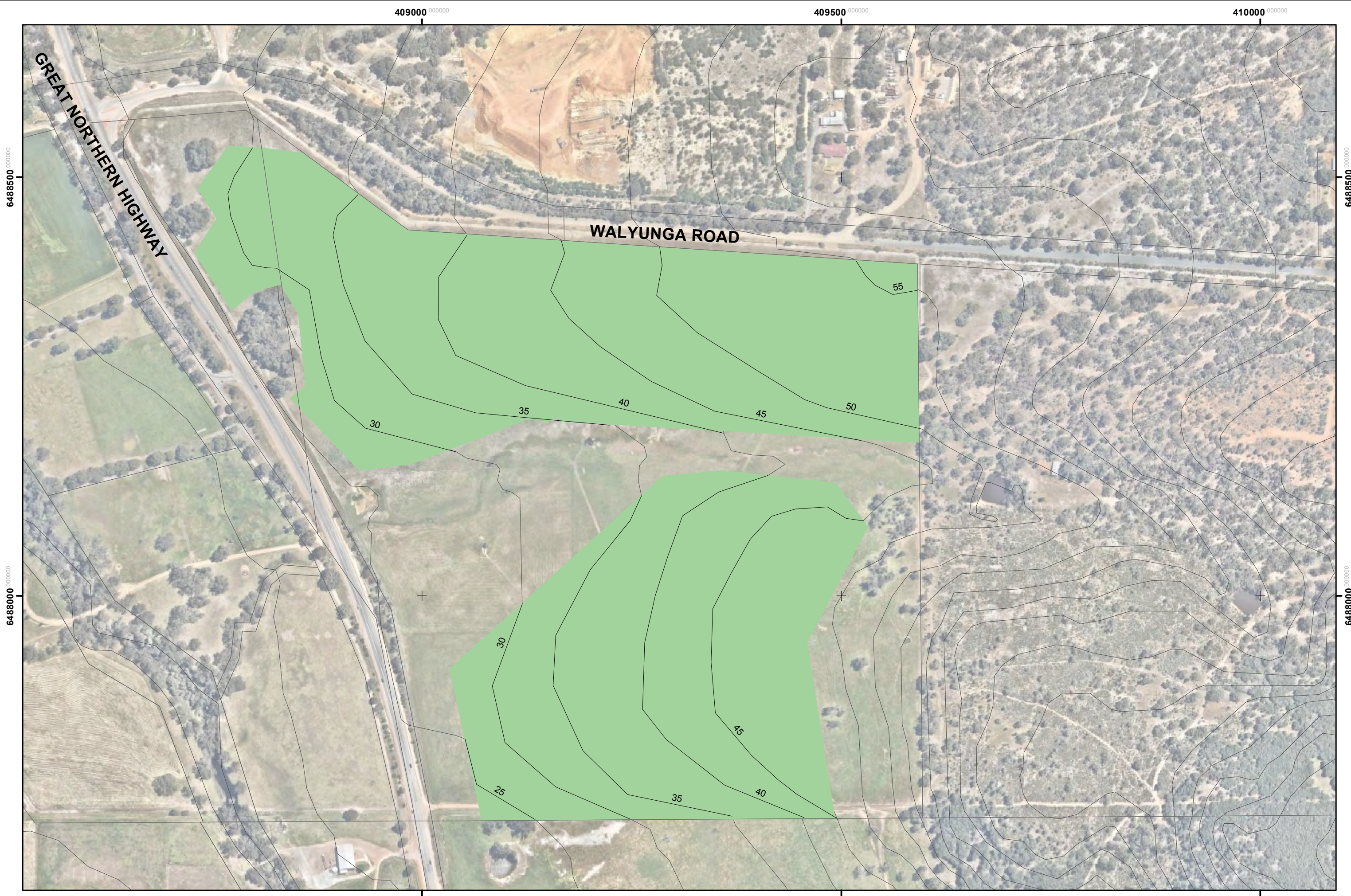


FIGURE 12 - Final Contours



Legend

- Haul roads
- extent_of_stockpiling_area
- Bunds 30m wide 4m or 5m high
- extraction depth
- Sand pit extents
- Clay pit extents
- 5m pre excavation contours

West end of North Sand Pit rehabilitation completed prior to final rehabilitation works (haul roads still in use)

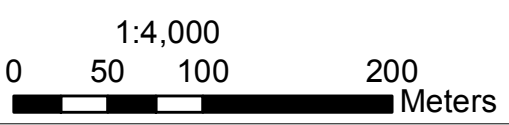
Clay stockpile area rehabilitation will take place during final rehabilitation works

Stage 4 rehabilitation will take place during final rehabilitation works

South Sand Pit potentially completed depending on market demand for Sand

Clay Stage 1-3 rehabilitation completed prior to final rehabilitation works

408500 000000 409000 000000 409500 000000



Darling Downs- Bullsbrook-- Expected situation prior to final rehabilitation works.