

Environmental Protection Act 1986

Section 43A

NOTICE OF DECISION TO CONSENT TO AMEND A REFERRED PROPOSAL DURING ASSESSMENT

PERSON TO WHOM THIS NOTICE IS GIVEN

(a) VBX Limited (ABN: 79 163 215 914)
PO Box 589
LEEDERVILLE WA 6902

PROPOSAL TO WHICH THIS NOTICE RELATES:

Wuudagu Bauxite Project
Assessment No. 2237; PRO-0021377

Pursuant to s. 43A of the *Environmental Protection Act 1986* (EP Act), the Environmental Protection Authority (EPA) gives approval to the assessment of the proposal being completed in respect of the proposal as amended in accordance with the proponent's request:

- decrease the size of the development envelope from 8,436 hectares (ha) to 7,789.4 ha, split into a 'terrestrial development envelope' of 7,065.5 ha and a 'marine development envelope' of 723.8 ha
- decrease the maximum disturbance footprint within the terrestrial development envelope from 1,946 ha to 1,771.8 ha
- increase the maximum disturbance footprint within the marine development envelope from 3 ha to 3.5 ha
- addition of twelve barge mooring points and three transshipment anchorage locations
- addition of a 2 gigalitre per annum (GLpa) desalination plant, and increase groundwater abstraction from 0.4 GLpa to 1.6 GLpa, to facilitate scrubbing during the beneficiation process
- relocation of the beneficiation plant at Guy Point to within the mining area
- sealing of the haul road surface
- revision of scope 1 greenhouse gas emissions estimates from less than 60,000 tonnes CO₂-e per year to an average of 75,000 tonnes CO₂-e per year.

The amended proposal content document and figures are attached.

SUMMARY OF REASONS:

- The reduction in terrestrial clearing extent is likely to reduce impacts to flora and vegetation, terrestrial fauna, and terrestrial environmental quality.
- The increase in marine disturbance footprint is unlikely to result in significant new or additional residual impacts.
- The inclusion of transshipment locations was initially referenced in the proponent's referral documents and further information on these locations was included as work items in the environmental scoping document. Formally including these locations as proposal elements, including accurate spatial data, is considered appropriate.
- There may be new or additional impacts:
 - to benthic communities and habitat, marine environmental quality, and marine fauna associated with the addition of the desalination plant and mooring points
 - to inland waters and subterranean fauna associated with the increase in groundwater abstraction
 - from dust emissions associated with the relocation of the beneficiation plant.
- To proceed with the assessment of the amended proposal the EPA considered it appropriate to perform additional functions related to the amendments that introduce new elements. The EPA has decided to require additional work items to be included in the proponent's environmental review document under s. 40(2)(a) of the EP Act.
- Noting the requirement to provide further information under s. 40(2)(a) of the EP Act, the EPA considered that there is sufficient information about the amendments to make a decision on whether to approve the changes to the proposal.
- There are no new environmental factors likely to be significantly affected as a result of the amendments. It is noted that the approved ESD identifies subterranean fauna is an environmental factor requiring further consideration in the environmental review document.
- The amendment would not, if the proposal were already approved, be a significant amendment. In considering this, the effects of the amendment on its own, the effect of the amendment in the context of the existing referred proposal, cumulative and holistic impacts have been considered.
- The amended proposal will be substantially the same character as the existing referred proposal.

EFFECT OF THIS NOTICE:

1. The assessment of the proposal is to be completed in respect of the proposal as amended in accordance with the decision set out in this notice.

2. The proposal as amended in accordance with this notice is taken to have been referred to the EPA under s. 38 of the EP Act.

RIGHTS OF APPEAL:

There are no rights of appeal under the EP Act in respect of this decision.

A handwritten signature in black ink, appearing to read 'Darren Walsh', written in a cursive style.

Darren Walsh
Delegate of the Environmental Protection Authority
CHAIR

16 June 2026

Attachment 1 - Amended proposal content document and figures

Proposal Content Document - Amendment

Table 1: General proposal content description

Proposal title	Wuudagu Bauxite Project
Proponent name	VBX Limited
Short description	<p>VBX Limited propose to construct and operate a bauxite mining, beneficiation and export operation in northern Western Australia in the Shire of Wyndham-East Kimberley (Figure 1).</p> <p>Bauxite will be mined from two primary resource areas, approximately 15 km west of Kalumburu. Mined material will be upgraded via a beneficiation plant at the mining areas, then hauled approximately 30 km north to Guy Point, where it will be stockpiled and loaded onto barges via a conveyor, for transshipping to larger vessels offshore. Other ancillary support infrastructure will include facilities for landfill, power, desalination and groundwater abstraction.</p> <p>The initial life of the project is expected to be approximately 10 years.</p>

Table 2: Proposal content elements (changed elements in bold font)

Proposal element	Location / description	Maximum extent, capacity or range	Proposed Amendment
Physical elements			
Development Envelope	Figure 2	Combined terrestrial and marine development envelope not to exceed 8,436.0 ha.	Total development envelope not to exceed 7,789.4 ha. Terrestrial development envelope not to exceed 7,065.5 ha. Marine development envelope not to exceed 723.8 ha.
Construction elements			
Disturbance Footprint, including, but not limited to:	Figure 2 and Figure 3	Terrestrial disturbance not to exceed 1,946 ha within 8,436 ha development envelope.	Terrestrial disturbance for construction not to exceed 1,771.8 ha within 7,065.5 ha terrestrial development envelope.
Terrestrial construction <ul style="list-style-type: none"> - Mining areas - Haul road and utilities corridor - Beneficiation plant - Conveyor and load-out facilities - Product stockpile - Accommodation camp - Groundwater bore field - Desalination plant - Power generation facility - Landfill and waste water treatment - Support infrastructure 		Marine disturbance does not exceed 3 ha within 8,436 ha development envelope.	Marine disturbance for construction not to exceed 3.5 ha within 723.8 ha marine development envelope.

Proposal element	Location / description	Maximum extent, capacity or range	Proposed Amendment
Marine construction			
<ul style="list-style-type: none"> - Barge loading facility (BLF), pile and truss jetty - Marine offloading facility (MOF) - Landing craft ramp (LCR) - Barge mooring points 			
Operational elements			
Mining production	Figure 2	Up to 6 million tonnes per annum (Mtpa) of mined ore	Up to 9 Mtpa
Mining methods	Figure 2	Surface mining methods. Mining depths will average 4 m. Dewatering will not be required.	Surface mining methods, with an average depth of 4 m. Dewatering will not be required. Stockpiled overburden will be returned to mined areas.
Beneficiation	Figure 2	Beneficiation plant at Guy Point.	Beneficiation plant at the mining areas.
Transshipment and Barge Mooring	Figure 2	No mooring point will be required at the transshipment location.	Three transshipment anchorage locations, with a total area extent of 337 ha. Twelve barge mooring points.
Desalination Plant	Figure 2	Not previously included.	Up to 2 GLpa potable water production.
Groundwater abstraction	Figure 2	Abstraction of no more than 1,095 m ³ /day of groundwater.	Up to 1.6 GLpa groundwater abstraction.
Power generation	Figure 2	Up to 6 MVA power generation facility.	No change.
Waste Management and Landfill	Figure 2	Up to 3 ha within terrestrial development envelope.	Class II putrescible landfill for domestic and inert wastes generated onsite.
Proposal elements with greenhouse gas emissions			
Scope 1	Plant, equipment, electricity, land clearing	Initial annual average estimate 60,000 tCO ₂ e per year.	Current annual average estimate of 75,000 tCO₂e per year. Current peak annual estimate 93,000 tCO₂e.
Scope 2	N/A	Not previously included.	0 (zero) tCO₂e per year.
Scope 3	N/A	Not previously included.	Current estimates for total life of project are 137,000,000 tCO₂e.
Rehabilitation and Closure			
<p>Rehabilitation and closure planning will form an early component of all operational planning for the mining areas. Stockpiled overburden and soil material will be returned to the mined areas for progressive rehabilitation. Infrastructure to be removed within 3 years of closure, unless otherwise agreed to retain for future land use.</p>			

Proposal element	Location / description	Maximum extent, capacity or range	Proposed Amendment
Other elements which affect extent of effects on the environment			
Proposal time*	Maximum project life	Initially 10 years	No change
	Construction phase	Not previously included	4-6 months
	Operation phase	Not previously included	Initially 10 years
	Decommission phase	Not previously included	Up to 3 years

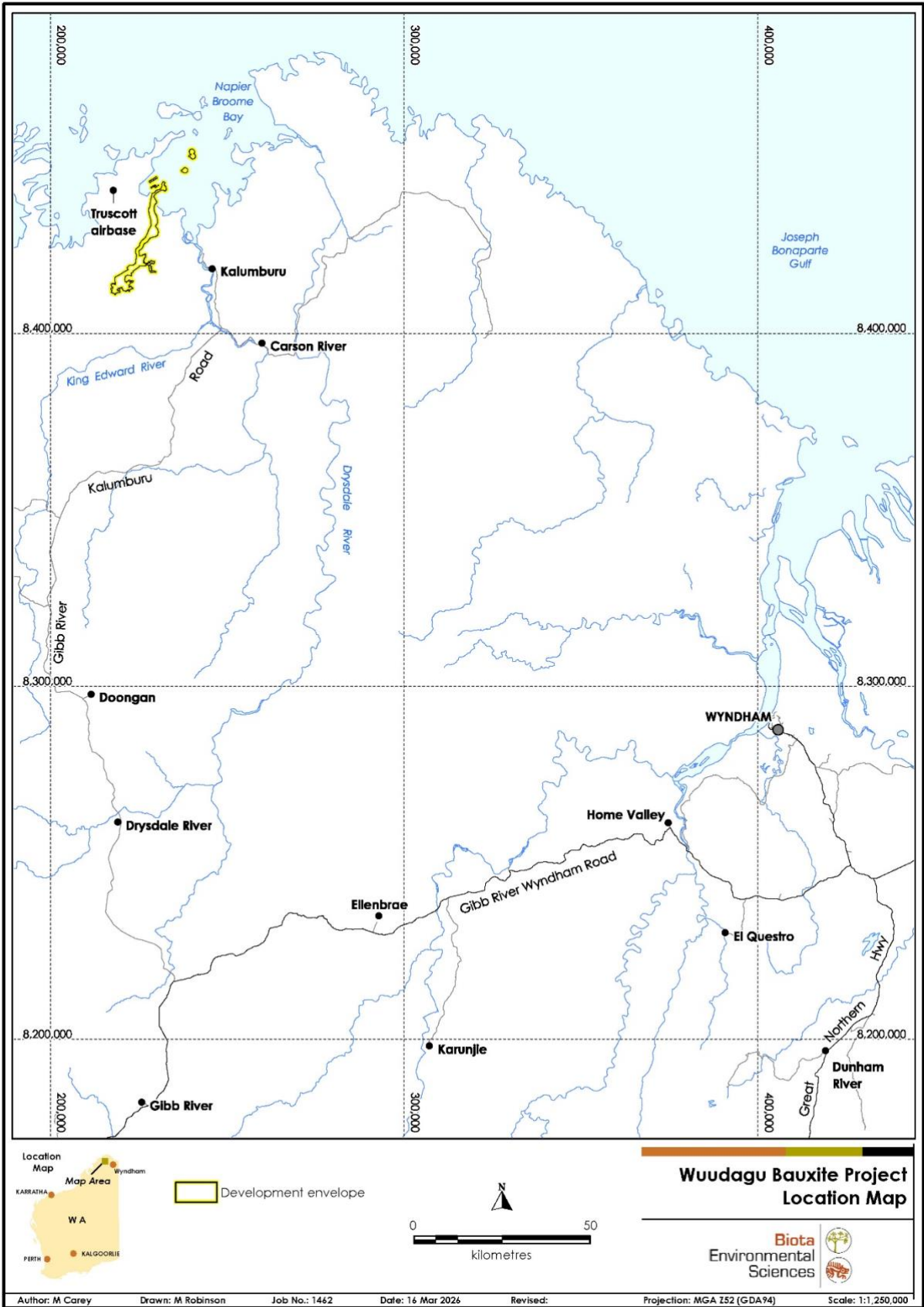


Figure 1. Wudagu Bauxite Project - Regional Location

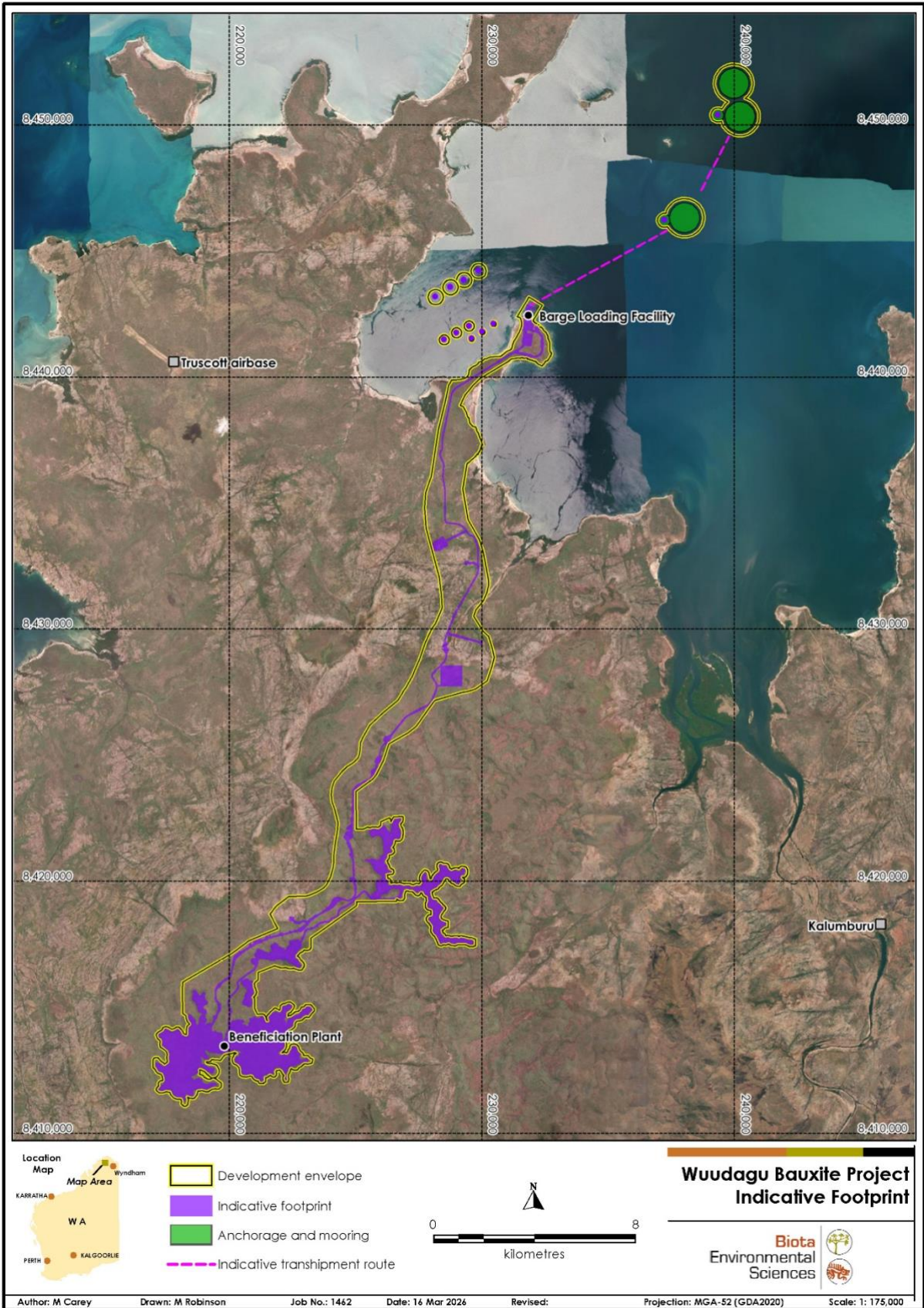


Figure 2. Wudagu Bauxite Project - Development Envelope and Indicative Footprint

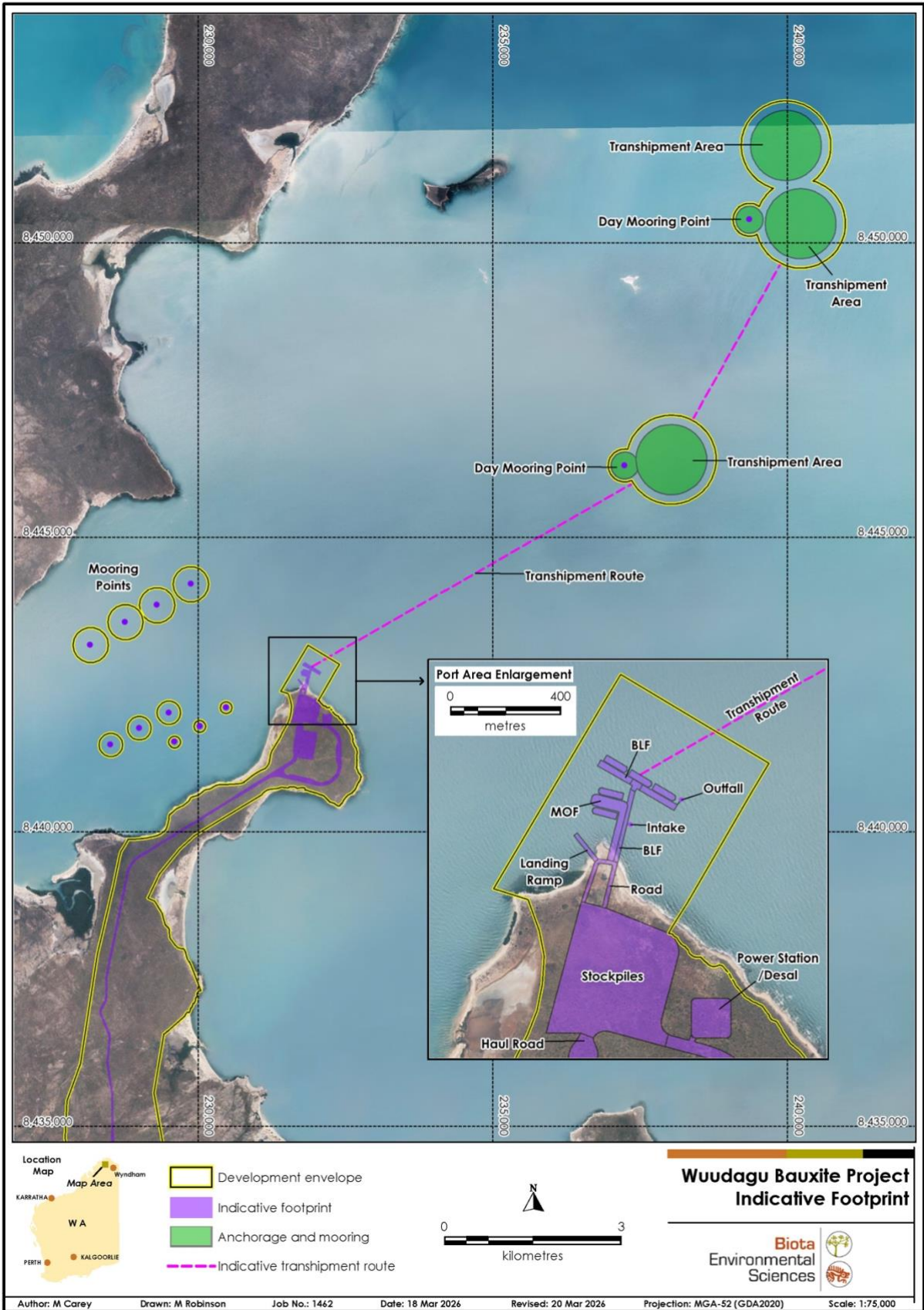


Figure 3. Wuudagu Bauxite Project – Guy Point Layout